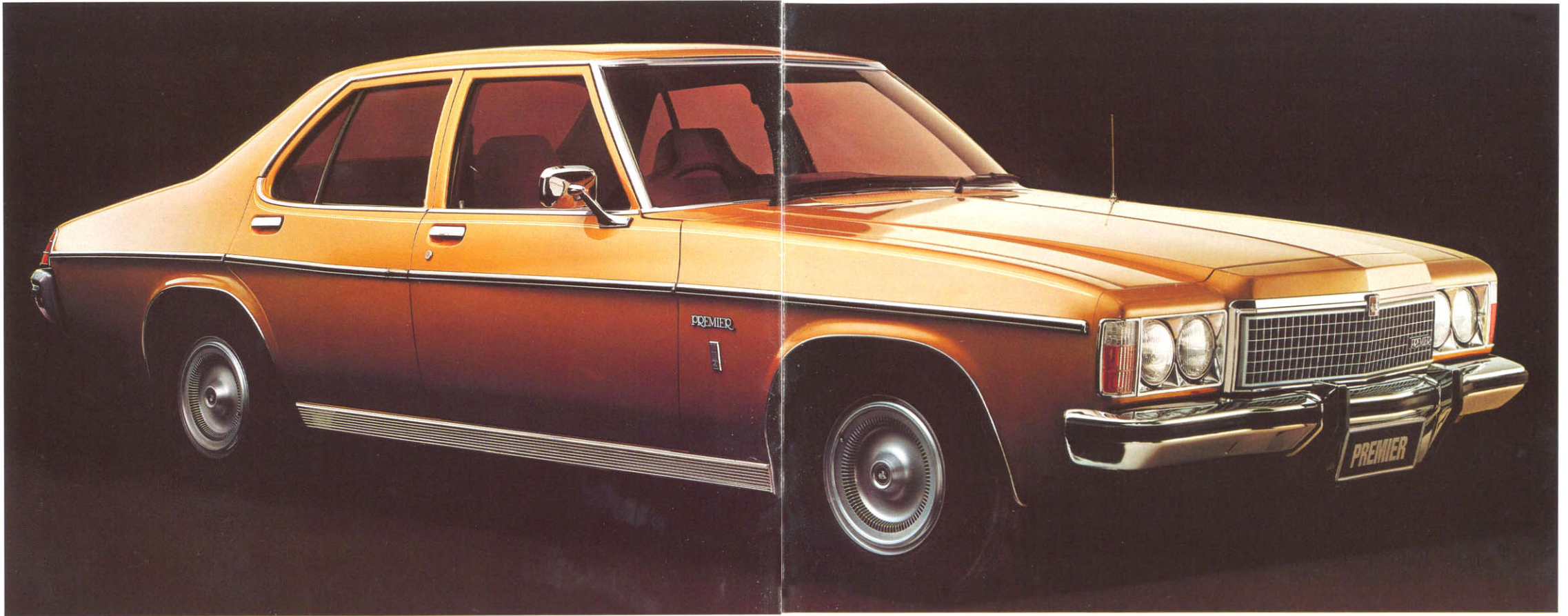


FULLY EQUIPPED
WITH YOUR
KIND OF STYLE

PREMIER



Premier style.



Style. It's the way you look at life. The way that others see you. And it's clearly shown in the kind of car you choose to drive.

Like Premier. With its finely-detailed grille and four quartz halogen headlights, it has a style that sets it apart immediately.



Part of its distinction is the impressively high level of standard equipment. Like Tri-matic automatic transmission. Variable ratio power steering. Responsive 4.2 litre V8 engine. Power front disc brakes. Long-range pushbutton radio. Individually adjustable reclining bucket seats. Electric demister for the Sedan's rear window. Tinted laminated



windscreen plus tinted glass all around. And the many other fine appointments described on the following pages.



Classic style shows from every angle. The sculptured rear deck. Chrome-accented mouldings along the sides, around the wheel openings, on the rear deck. Full wheel covers and steel belted radial ply tyres. Rubber bumper impact strips. Bright door sill plates. Fine pinstriping following the crisp, clean lines.



But it's on the road that Premier really shows its colours. Four coil springs assure a smooth ride. And Radial Tuned Suspension means Premier belongs to the finest handling family of cars we've ever built.



The RTS system matches all suspension components to the steel belted radial ply tyres. It assures you safer, more predictable handling — any road, any weather. You'll discover that RTS makes Premier a very easy car to drive. Because it is responsive to your style of driving.



Premier appointments.



Comfort begins with full foam reclining front bucket seats, separated by the full length automatic transmission console and centre armrest. Premier sets a high standard of standard equipment.

Welcome inside. You'll find this is our most completely-equipped Premier ever. Designed by people who thought things out before they put things in.

The first thing you'll notice is how Premier adapts to you. (Ergonomics is the word. Your comfort is the result.) When you sit in the full foam front bucket seats, you'll feel how they hold you in place. You'll feel the firm support in your back and shoulders. And you can adjust the seating distance and the fully reclining seat back angle precisely to the position that's most comfortable for you.

The soft grip steering wheel is easy to hold, relaxing on long drives. Variable ratio power steering is standard. And the column mounted fingertip control stalk lets you operate windshield washer and wipers, turn signals,

headlight dimming and flashing, without taking your hands from the wheel.

At your left hand is the full length console, housing the T-bar control for the Tri-matic automatic transmission. The console also includes a handy storage compartment topped by a padded armrest.

Fresh air flows over you through two-speed power ventilation. Premier's integral heater warms the fresh air temperature to your comfort, and directs air flow through windshield demister outlets as well.

Premier Sedan also includes an electric rear window demister. And Premier's modern slim-pillar design gives you excellent visibility. We've even included a remote control external mirror, which you can adjust for your driving position without lowering the window. (Especially appreciated in the rain.)

As you look over the instrument panel, you'll see the handsome wood-grain finish, the easy-to-read instruments and a quartz-accurate electric clock. Plus a powerful pushbutton radio for your choice of news, sports, weather and music.

Of course, good sounds need a quiet car. And our acoustic engineers have really done their homework. Using modern anechoic chambers (silent rooms), and super-sensitive microphones and sensors, they have created a car of exceptional quietness. Scientifically located soundproofing keeps out road and engine noise. Thick rubber body mountings insulate the entire passenger compartment from the frame. Resonance dampers help keep the engine and transmission quiet.

Premier's isolated front chassis frame reduces vibration and noise. And full carpeting throughout — even on the lower door panels — assures even more silence (as well as soft comfort underfoot).

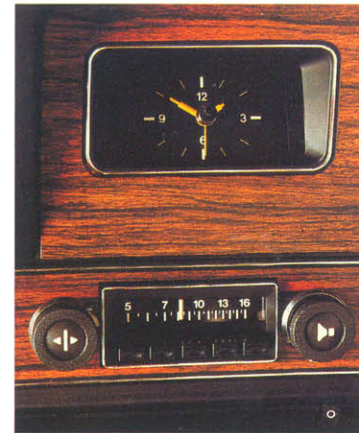
Premier is designed with style. For your driving position and comfort. Your preference of fresh air and heating. Your visibility. And your convenience in dozens of appointments that make your Premier an exceptionally distinctive driving experience mile after mile, year after year.



Variable ratio power steering.



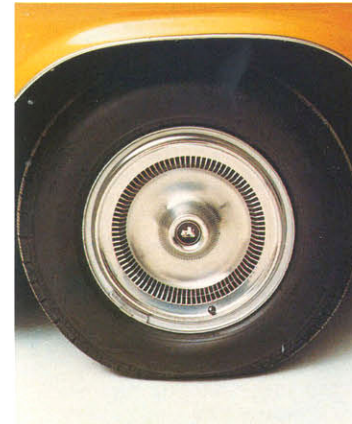
Automatic transmission, 4.2 litre V8 engine.



Keep time with the music.



Electric demister clears the rear view.



Full wheel covers. Steel belted radials.



Outside mirror's adjustable from inside.



Fingertip control for washers, wipers, turn signals, headlights.



Fresh air from 2-speed dash level power ventilation.



Four quartz halogen headlights. Rubber bumper impact strips.

Premier Wagon.



Premier wagon drivers are a special kind of people. You'll see them rolling up to the ski country, heading to the fishing streams with camping gear, loading in spinnakers at the local marine supply, down at the golf club or just enjoying a picnic lunch under some shady riverbank tree with friends and folding chairs. Maybe that's your style, too.

Premier is Australia's luxury wagon. So you enjoy just about every comfort feature and appointment you'll find in Premier sedan. Except we've added a power tailgate window as standard, controllable either from the dash or with the tailgate key.

Lower the rear seat and the load space is big enough to hold a 4-foot-wide wallboard panel flat on the floor between the wheel arches. Long enough to hold a mattress with the tailgate closed. 2.03m³ (71.5 cu. ft.) of cargo space, with a flat floor measuring 204.5cm (6'8.5") by 121.9cm (4') between the wheel arches. (And the vinyl covered rear load area floor has metal skids to help ease your mind about scratches.)



Remember when wagons were hard to handle? Well, that's all in the past. Because Premier wagon has Radial Tuned Suspension. So everything that's covered on the opposite page applies to Premier wagon, too.

Even fully laden to maximum design load, RTS equipped Premier wagon gives you confident predictable handling. Towing is more relaxed, too. And the long 114" wheelbase adds to the smooth ride.

Whatever your reason for driving a wagon, there's never been a better reason than Premier. With all the comfort of Premier sedan. And the room to take everything you need.

Premier wagon. Carefully designed to match your style of living.



Premier Radial Tuned Suspension.



Your new Premier's Radial Tuned Suspension is a hallmark in the development of automotive safety and road performance.

Radial Tuned Suspension matches all suspension components to Premier's steel belted radial tyres. It means your new Premier belongs to the finest handling family of cars we've ever built.

International Engineering Task-Force

To create Radial Tuned Suspension, a team of Australian and international engineers was assembled at General Motors-Holden's. They included men whose expertise had changed chassis engineering from a 'seat of the pants' method into an exacting computer-based science. Top engineers from Australia, Germany and America. A chassis-engineering task-force. And all of them, men who love to drive.

Two Years' Intensive Development

Then began the most intense ride and handling development programme ever undertaken in Australia.



The combined expertise of an international team of top engineers. Years of testing and computerized fine-tuning. Fundamental chassis and suspension modifications.

Smooth Ride

Unlike typical 'sports suspension' combinations of stiff springs and heavy duty shock absorbers, Premier's Radial Tuned Suspension doesn't compromise on ride comfort.

In fact, Premier's four-coil suspension is even smoother than in the previous model, to effortlessly soak up bumps and road undulations.



A New Dimension of Safety

Radial Tuned Suspension offers the Premier owner new driving safety. In emergency situations, the driver can call upon exceptionally quick steering response. Tremendous tyre adhesion to the road. Predictable cornering with a minimum of body lean. Reduced chance of skidding or spinning. And when the weather turns bad, Premier shines. The steel belted radial tyres give the best wet-weather traction you can get. And the rest of the RTS system keeps them glued to the road to get

the best out of them. If the wind comes up or a truck passes you, RTS keeps you going straight ahead with no drama.

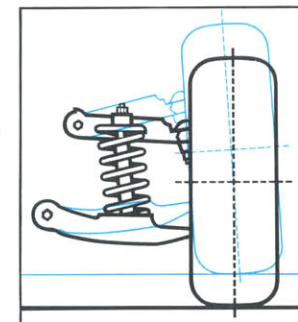
Holden's Radial Tuned Suspension can't be simply 'added on' to other cars. But it is built into every Premier Sedan and Wagon GMH makes.



Trust Premier with Radial Tuned Suspension. It belongs to the finest handling family of cars we've ever built.

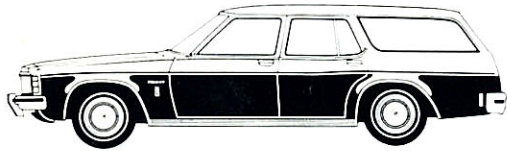
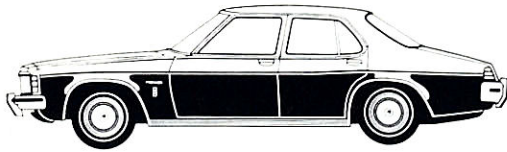
RTS Engineering List

- Steel belted radial ply tyres.
- Wider wheel rims.
- Front stabilizer bar.
- Rear stabilizer bar (decoupled).
- Longer, deeper coil springs.
- Larger diameter shock absorbers.
- Re-designed shock absorber mountings.
- Negative front camber.
- Positive front castor.
- Re-designed and re-located upper control arm brackets.
- Re-designed suspension bushings (radially hard, longitudinally soft).
- Re-designed larger front suspension compression bumper.
- Re-designed rear axle lower control arm bushings.
- Re-designed body mounting system for reduced body flex.
- Stiffer steering connecting rod insulators.
- More rigid steering column attachments.
- Variable ratio power steering re-designed for improved driving feel.



Front suspension is computer-designed to keep optimum tyre tread on the road while cornering.

Premier Engineering.



and external fuel lines. Cargo-guard luggage compartment barrier. Premier also gives you extended routine service intervals of 6 months or 10,000 kms. And Australia's biggest Dealer and service network. There are more than 500 Holden Dealers across the continent, and their staff are trained to give you the best possible attention.

Retracting rear outboard seat belts (Sedan). Fingertip control stalk for windshield washers and wipers, turn signals, headlight dimming and flashing. Remote control exterior mirror. Bumper over-riders and rubber impact strips front and rear.

Standard Equipment.

Radial Tuned Suspension. Steel belted radial tyres. 4.2 litre V8 engine. Tri-matic automatic transmission. Variable ratio power steering. (Opt. when 3.3 litre engine fitted.) Power brakes: front discs, rear drums. Tinted laminated windscreens. Tinted side and rear glass. Electric rear window demister (Sedan). Electrically operated rear window (Wagon). 2-speed flow through ventilation. Four quartz halogen headlights. Push-button radio. Quartz-accurate clock. Full length centre console. Fully reclining front bucket seats. Rear seat centre armrest. Loop pile carpeting. Soft grip steering wheel. Retracting front seat belts.

Optional Equipment.

Fully integrated air-conditioning. Power side windows. Four-wheel power disc brakes. 3.3 litre 6-cylinder engine. 5 litre V8 engine. Four-speed console mounted manual transmission (Sedan). Limited slip differential. Wire spoke wheel wells. Vinyl roof (Sedan). Corniche cloth trim.

All illustrations and specifications contained in this catalogue are based on the latest product information available at time of publication approval. The right is reserved to make changes at any time, without notice, in prices, colours, materials, equipment, specifications and models and to discontinue models. Some of the equipment shown or described throughout this catalogue is available at extra cost. Check with your Holden Dealer for complete information.

Specifications.

Engine: 4.2 litre V8
Bore: 3.625" (92.0mm) x Stroke: 3.062" (77.7mm)
Cubic Capacity: 252.81cu. ins. (4142cm³)
Compression Ratio: 9.4:1
RAC rating: 42.0
Transmission: Tri-matic automatic with T-bar console control.
Rear axle: Type — Salisbury housing with live axles. Ratio: 3.08:1.

Radial Tuned Suspension: Front — Independent short and long arms with specially rated coil springs and shock absorbers. Rear — 4 links with specially rated coil springs and shock absorbers.

Standard Tyres: ER78S14 steel belted radials.

Fuel Tank Capacity: 16.5 gals. (75.0 litres)

Wheelbase: Sedan — 111.0" (2819mm)

Wagon — 114.0" (2895mm)

Track/Front: Sedan & Wagon — 60.1" (1527mm)

Track/Rear: Sedan & Wagon — 60.5" (1537mm)

Overall length: Sedan — 192.9"

(4899mm)
Wagon — 193.4" (4912mm)
Overall width: 74.5" (1892mm)
Overall height: Sedan — 55.0" (1397mm)
Wagon — 55.5" (1410mm)
Turning circle: Kerb to Kerb — Sedan — 39.7' (12.3m)
Wagon — 40.5' (12.5m)
Ground Clearance: Sedan — 6.6" (168mm)
Wagon — 6.7" (170mm)
Estimated Kerb Weight: Sedan — 3291 lbs. (1493 kgs.)
Wagon — 3419 lbs. (1551 kgs.)

Safety Features.

Radial Tuned Suspension. Power brakes: front discs, rear drums. Energy-absorbing steering column. Tandem brake master cylinder with split hydraulic circuits. Energy-absorbing sun visors. Electric windshield washers with 2-speed wipers. Fan boosted heater/demister. Brake failure warning lamp. Parking brake warning lamp. Front seat head restraints. Seats belts for five occupants. Underslung, isolated fuel tank

Premier Power Train.

Engine	Standard Transmission	Optional Transmission
Standard 4.2 litre V8	3-speed Tri-matic Automatic	4-speed manual (Sedan)
		4-speed high performance manual (Sedan)
Optional 3.3 litre 6-cylinder	3-speed Tri-matic Automatic	4-speed manual (Sedan)
		Turbo-Hydrumatic Automatic
Optional 5.0 litre V8		4-speed high performance manual (Sedan)

