

# UTES FOR THE FAMILY MAN.



**THEY'RE ALL IN THE HOLDEN FAMILY.**

## RODEO ACCESSORIES.

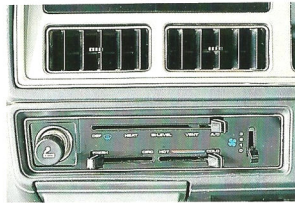
There are many ways to personalise new Rodeo with your choice of accessories.

The LS Space Cab (Illustrated below) is fitted with a bull-bar, 100 Watt driving lamps, driver's side weathershield and a practical tonneau cover.



Handsome yet durable tonneau cover.

Other accessories available for Rodeo but not illustrated, include: stylish body stripes, radiator insect screen, passenger side weathershield, heavy duty front mud flaps, sunshade, AM/FM stereo radio/cassette player and tray protector (Crew cab only).



Integrated GMH air conditioning for year round driving comfort.

All these GMH approved accessories are available from your local Holden dealer and covered by the 12 month/20,000 km warranty.

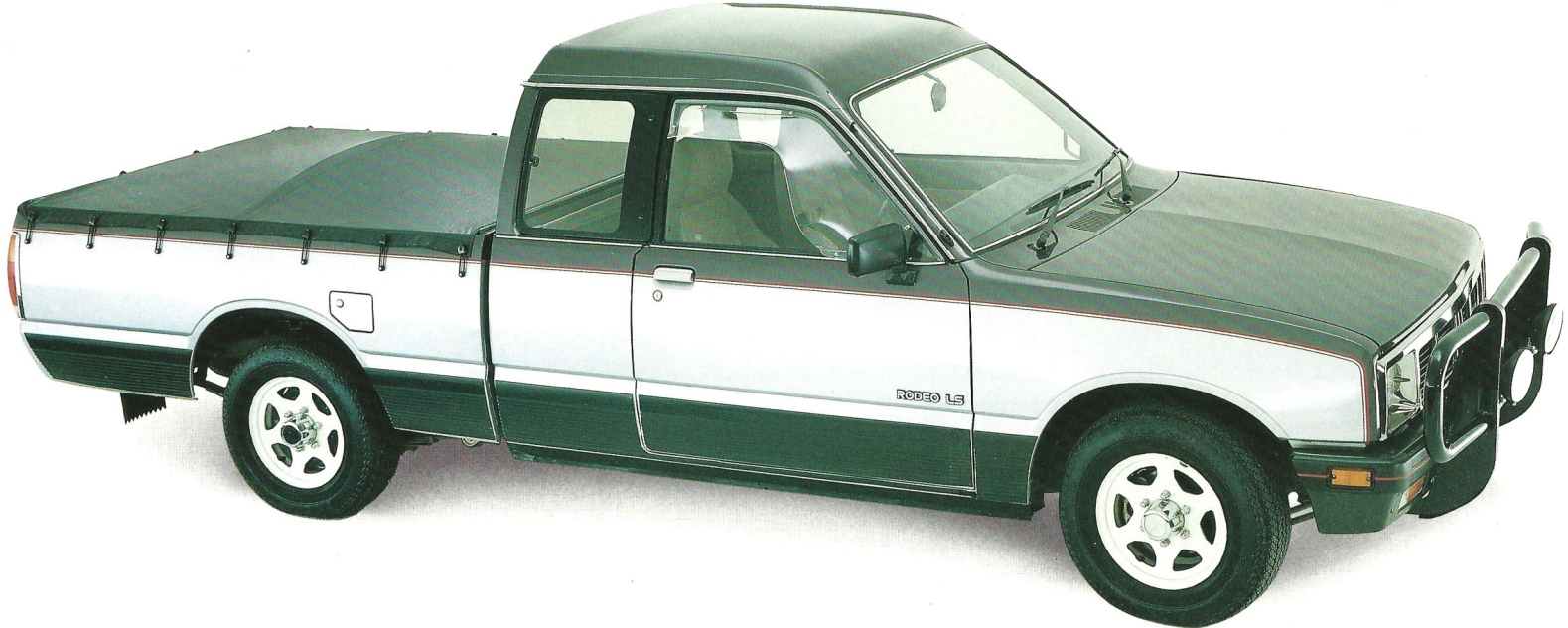


Dash mounting altimeter/inclinometer set.

Tow bar and tongue  
(Trailer wiring harness also available).



Headlamp guards.



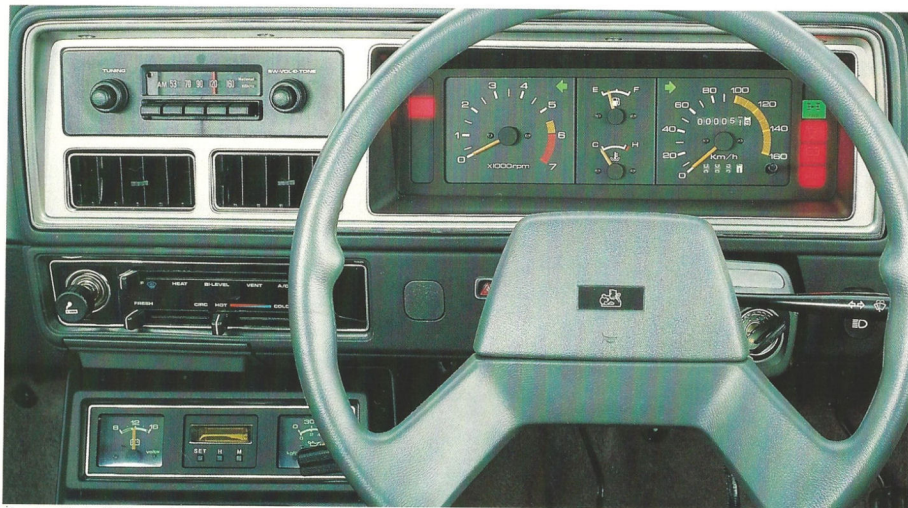
## GMH 12/20 WARRANTY.

PLEASE NOTE: As the policy of General Motors-Holden's is one of continual product improvement, all specifications and equipment are subject to change without notice. No GMH Dealer or other person is authorised or permitted to give or make any statement, assertion, or undertaking in relation to the quality, performance, characteristics, descriptions or fitness for any purpose of any GMH product, or in connection with the supply of any GMH product, which is at variance with any written statement, assertion or undertaking on any of these subjects given or made by General Motors-Holden's Limited or General Motors-Holden's Sales Pty. Ltd. in its published sales literature and neither company accepts any liability for any such unauthorised action.

General Motors-Holden's Limited and General Motors-Holden's Sales Pty. Ltd. have franchised dealers in many parts of Australia for the sale of service parts and the provision of service to owners of GMH's products. Every endeavour is made to ensure that such dealers carry adequate stocks of service parts and are equipped to provide satisfactory service, but neither General Motors-Holden's Limited or General Motors-Holden's Sales Pty. Ltd. makes any promise other than that contained in the New Vehicle Warranty given by General Motors-Holden's Sales Pty. Ltd. that such parts or service facilities will be available, or available at any specific location or at any particular time.

GMH 12/20 Warranty: Every Holden is covered by the GMH Warranty which covers your vehicle for the first 12 months or 20,000 kilometres, whichever occurs first. TR14480 issued Oct. '85

Holden: Australia's Driving Future. 



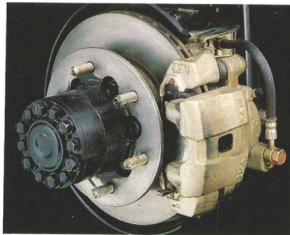
Spacious Rodeo LS Space Cab offers tachometer, digital clock, voltmeter, oil pressure gauge, 3 speed heater/demister and push button AM radio.



5 speed trans. with overdrive top.



2 position drop down tailgate.



Ventilated front disc brakes.



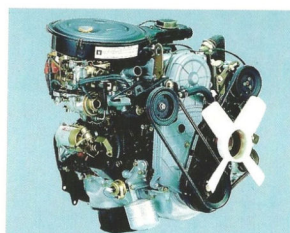
Locking fuel filler door.



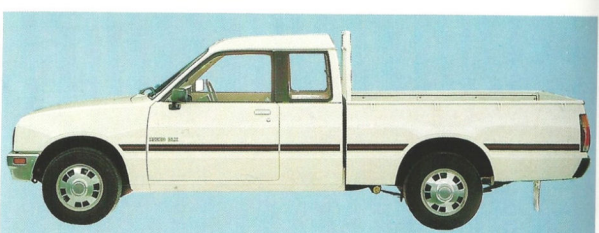
Double wall ute body.



White sports styled steel wheels.



Powerful yet economical 2.3L petrol engine.



Rodeo Space Cab is a dynamic, sports orientated package.

## RODEO FEATURES.

Within the vastly expanded Holden Rodeo family, you're sure to find a ute that's just right for you. Because now your range of choice includes 3 body variants, 3 levels of comfort, 2 or 4 wheel drive and, in many models, an option of diesel or petrol engines. From the roomy, new Space Cab through to the versatile Sedan Cabs and Utes, there's a Rodeo

raring to play for you and your family.

Engineered in Japan by Isuzu for Holden, the new wider Rodeo range incorporates a host of impressive mechanical features designed and built specifically for Australian conditions. For instance, a superbly engineered independent front suspension helps to produce the smooth ride and handling you'd expect from a passenger-type vehicle.

New 5-speed transmission with

an overdrive top is standard throughout the range, ensuring total driving flexibility as well as an extra measure of economy.

An all-new, large capacity 2.3 litre petrol engine is now available on most models. This highly responsive, yet economical power plant performs without fuss and produces loads of torque for low speed lugging and plenty of "go" for highway cruising as well. The Isuzu

designed Rodeo diesel is a rugged 2.2 litre, 4 cylinder engine that offers remarkable fuel economy with the solid reliability and longevity we've come to expect from these outstanding Japanese engineers. It's fitted with Isuzu's "Quick On Start" system, giving you the key-turn convenience of a petrol engine, coupled with the inherent benefits of diesel power.

Rodeo 4WD also offers a smooth,

passenger car ride and sure-footed traction over rough tracks thanks to the proven independent front suspension system. And Rodeo has one more thing going for it... a Holden badge that assures you of the nationwide backing of the country's best regarded, most experienced dealer network.



## **RODEO SHORT WHEELBASE UTE.**

This rugged, reliable Rodeo is as much at home in the bush as it is on the bitumen, with 4WD and an independent front suspension to make it easier than ever to negotiate difficult terrain. Available in 3 comfort levels and your choice of petrol or diesel engines, this Rodeo is exceptional value for money.

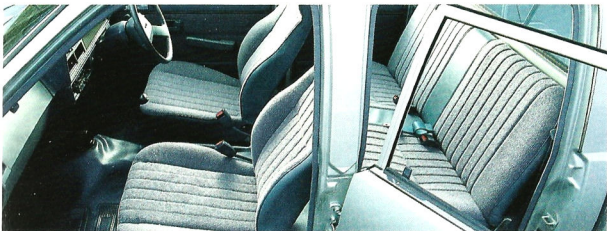
SWB Base ute features include:

- Front and rear tow hooks.
- Intermittent wipers.
- Laminated windscreen.
- Soft-feel steering wheel.
- Locking glove-box.
- 3 speed heater/demister.
- Push-button AM radio.
- Day/night rear view mirror.
- Double skin body for extra protection.
- Driver and passenger external rear view mirrors.



- Vinyl floor mats.
- 2 position tailgate with "flip" locks.
- Front door arm rests.
- SWB Rodeo Deluxe ute includes:
  - Durable, highly serviceable vinyl floor trim.
  - Vinyl trim body pillars.
  - Knit vinyl bucket seats.
  - Quartz halogen headlamps.
  - Chrome bumper.
  - Tinted side and rear glass.
  - Protective body side mouldings.

- The luxurious LS also features:
- Tweed fabric faced bucket seats.
  - Cloth covered door trims.
  - Extensive vinyl cabin trim.
  - Cut pile carpet.
  - Tachometer, clock, voltmeter and oil pressure gauge.
  - Protective rubbers on front bumper.
  - Bronze tinted side and rear glass
  - Wide protective body side mouldings.



### **RODEO SEDAN CAB.**

The Rodeo Sedan Cab equipped with the 2.3 litre petrol engine, 5 speed transmission with overdrive top and room for 5 is perfect for the family man who wants many of the features found in a passenger vehicle plus the added bonus of a half tonne loadspace. In short, this LWB Rodeo 4-door is the perfect family recreational vehicle. There are a

variety of models to choose from in 2 or 4 wheel drive, powered by petrol or diesel engines and all capable of carrying 5 adult passengers in Holden-style comfort.

Feature highlights of the Rodeo Sedan Cab Deluxe include:

- 4 door access.
- Quartz halogen headlamps.
- Laminated windscreen.
- Tinted side and rear glass.
- Protective body side mouldings.

- Knit vinyl front bucket seats.
- Functional knit vinyl door trim.
- Clock, voltmeter & oil pressure gauge.
- Additional cabin insulation.
- Tachometer. (4WD petrol model).
- Soft-feel steering wheel.
- Push-button AM radio.
- Day/night rear view mirror.
- 3 speed heater/demister.
- Cut pile carpet. (4WD petrol model).
- Centre lock on rear tailgate (petrol models).



## RODEO SPACE CAB.

The most recent addition to the family is the all-new Space Cab. There's a paddock of room inside, heaps of load space behind and a big new 2.3 litre petrol engine up front. With the longest wheelbase in its class, it can boast the biggest cabin without compromising load space. Available in 2 or 4 WD and 2 comfort levels, the Rodeo Space Cab is a versatile,

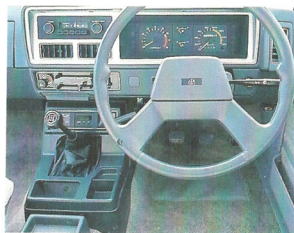
economical utility that's as suitable for family fun as it is for business.

Space Cab Deluxe features include:

- Knit vinyl bench seat and door trim.
- Chrome bumper bar.
- Quartz halogen headlamps.
- Tinted side and rear glass.
- Protective body side mouldings.
- Full wheel covers (4x2 models).

LS Space Cab features include:

- Tweed fabric recline, bucket seats.
- Full tweed door trims.



- Cut pile carpet.
- Tachometer, clock, voltmeter and oil pressure gauge.
- Styled road wheels.
- Body side mouldings.
- Bumper with protective rubbers.
- Bronze tinted side and rear glass.

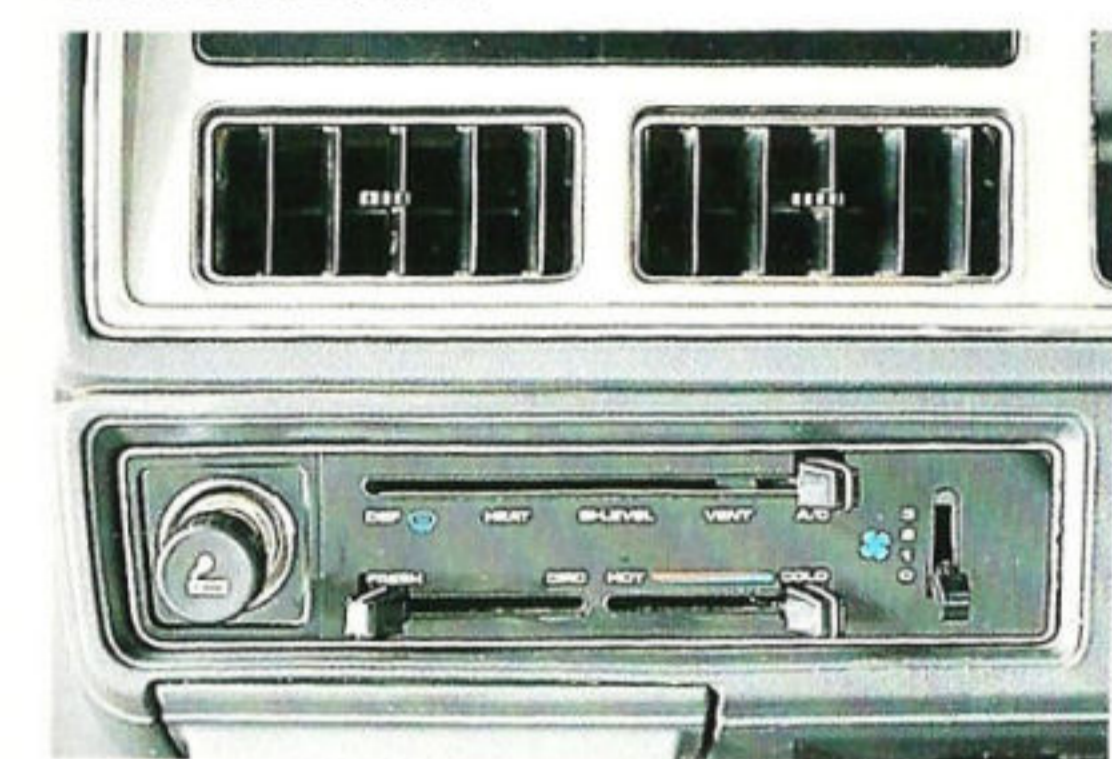
With dynamic good looks, the longest wheelbase and most powerful engine in its class, the Rodeo Space Cab ute will set a new standard in town and out.



## RODEO ACCESSORIES.

There are many ways to personalise new Rodeo with your choice of accessories.

The LS Space Cab (Illustrated below) is fitted with a bull-bar, 100 Watt driving lamps, driver's side weathershield and a practical tonneau cover.



Integrated GMH air conditioning for year round driving comfort.



Handsome yet durable tonneau cover.

Other accessories available for Rodeo but not illustrated, include: stylish body stripes, radiator insect screen, passenger side weathershield, heavy duty front mud flaps, sunshade, AM/FM stereo radio/cassette player and tray protector (Crew cab only).

All these GMH approved accessories are available from your local Holden dealer and covered by the 12 month/20,000 km warranty.

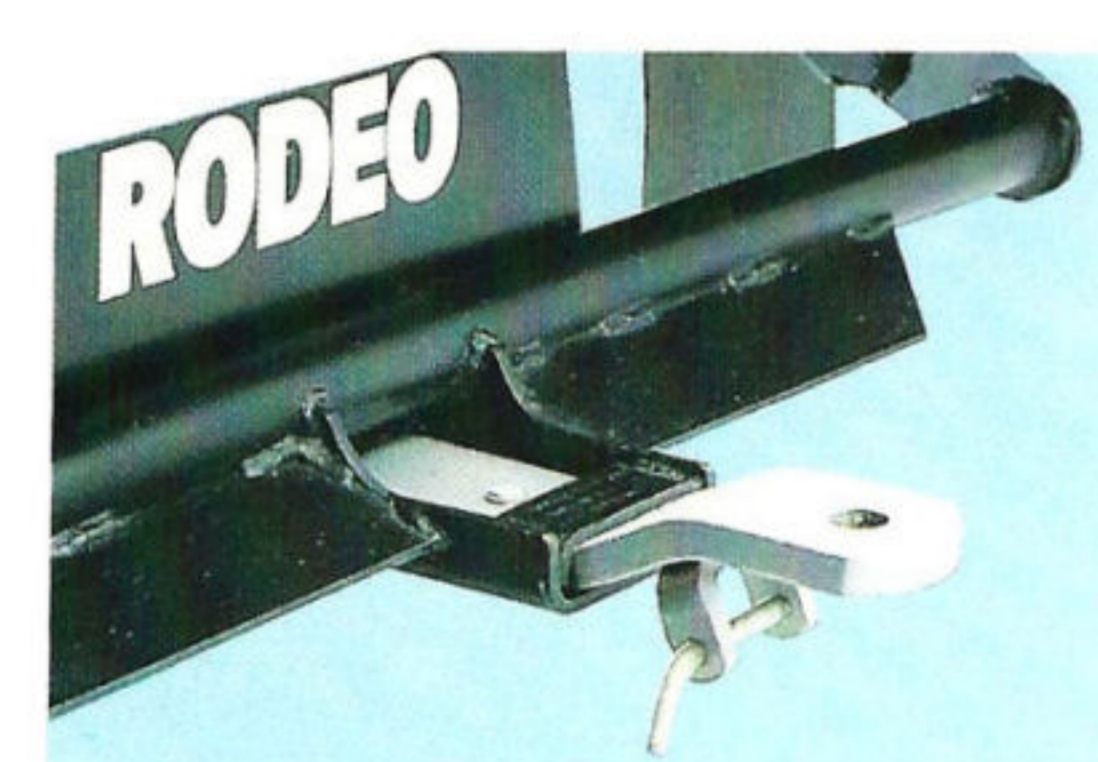


Dash mounting altimeter/inclinometer set.

Tow bar and tongue (Trailer wiring harness also available).



Headlamp guards.



## GMH 12/20 WARRANTY.

PLEASE NOTE: As the policy of General Motors-Holden's is one of continual product improvement, all specifications and equipment are subject to change without notice. No GMH Dealer or other person is authorised or permitted to give or make any statement, assertion, or undertaking in relation to the quality, performance, characteristics, descriptions or fitness for any purpose of any GMH product, or in connection with the supply of any GMH product, which is at variance with any written statement, assertion or undertaking on any of these subjects given or made by General Motors-Holden's Limited or General Motors-Holden's Sales Pty. Ltd. in its published sales literature and neither company accepts any liability for any such unauthorised action.

General Motors-Holden's Limited and General Motors-Holden's Sales Pty. Ltd. have franchised dealers in many parts of Australia for the sale of service parts and the provision of service to owners of GMH's products.

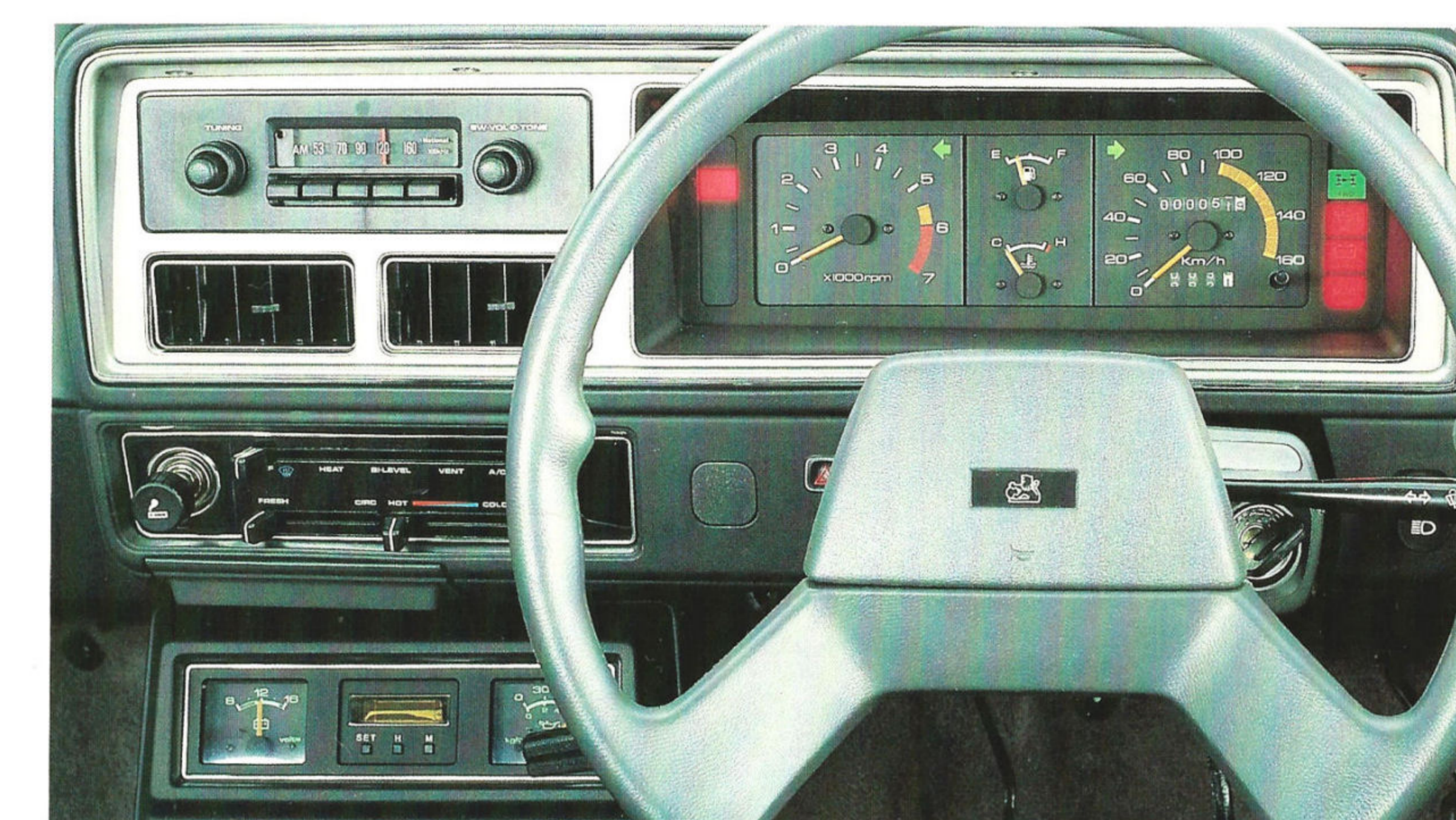
Every endeavour is made to ensure that such dealers carry adequate stocks of service parts and are equipped to provide satisfactory service, but neither General Motors-Holden's Limited or General Motors-Holden's Sales Pty. Ltd. makes any promise other than that contained in the New Vehicle Warranty given by General Motors-Holden's Sales Pty. Ltd. that such parts or service facilities will be available, or available at any specific location or at any particular time. GMH 12/20 Warranty. Every Holden is covered by the GMH Warranty which covers your vehicle for the first 12 months or 20,000 kilometres, whichever occurs first. TR14480 Issued Oct. '85

Holden: Australia's Driving Future.



# UTES FOR THE MAN.

THEY'RE ALL IN THE HOLDEN FAMILY.



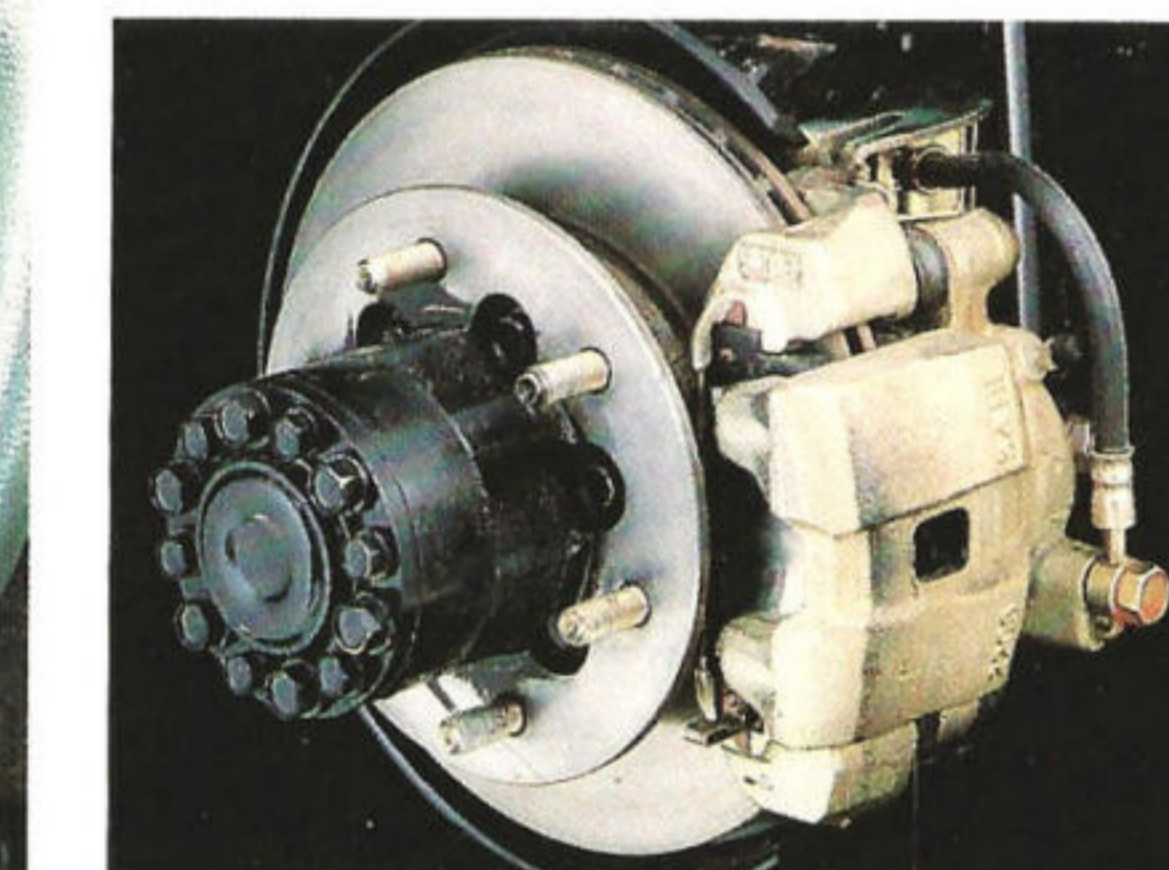
Spacious Rodeo LS Space Cab offers tachometer, digital clock, voltmeter, oil pressure gauge, 3 speed heater/demister and push button AM radio.



5 speed trans. with overdrive top.



2 position drop down tailgate.



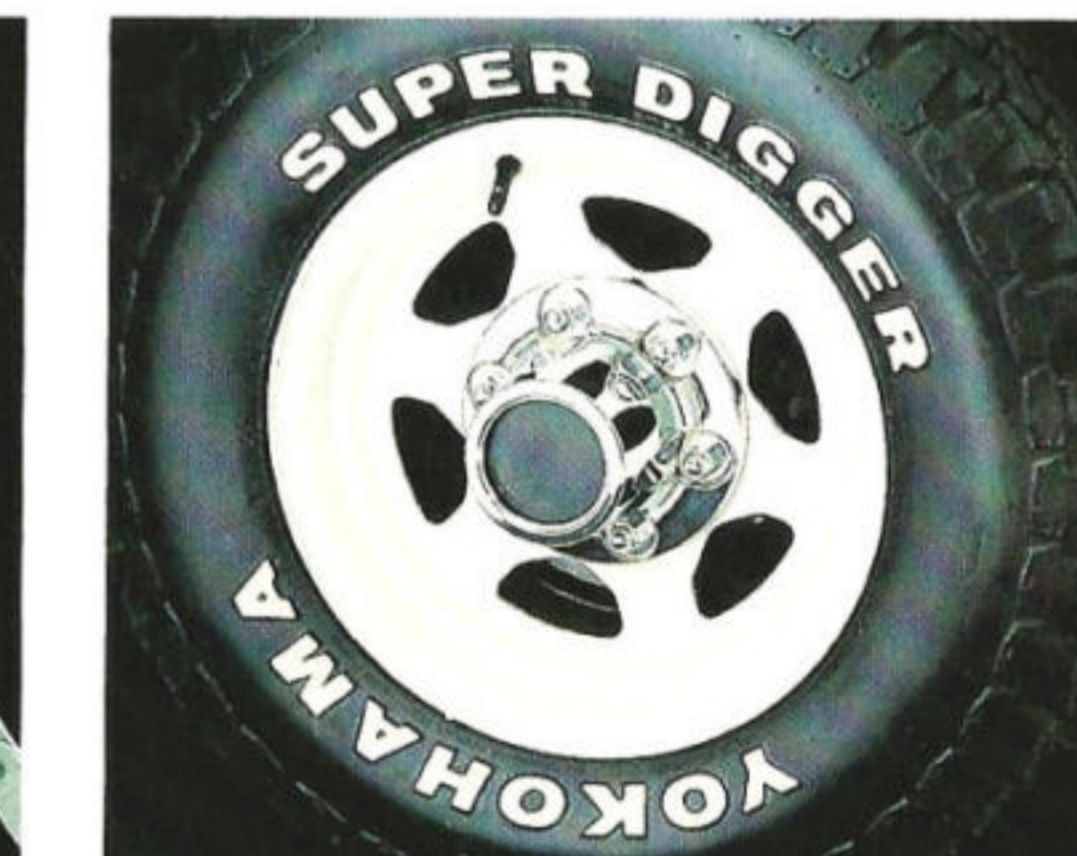
Ventilated front disc brakes.



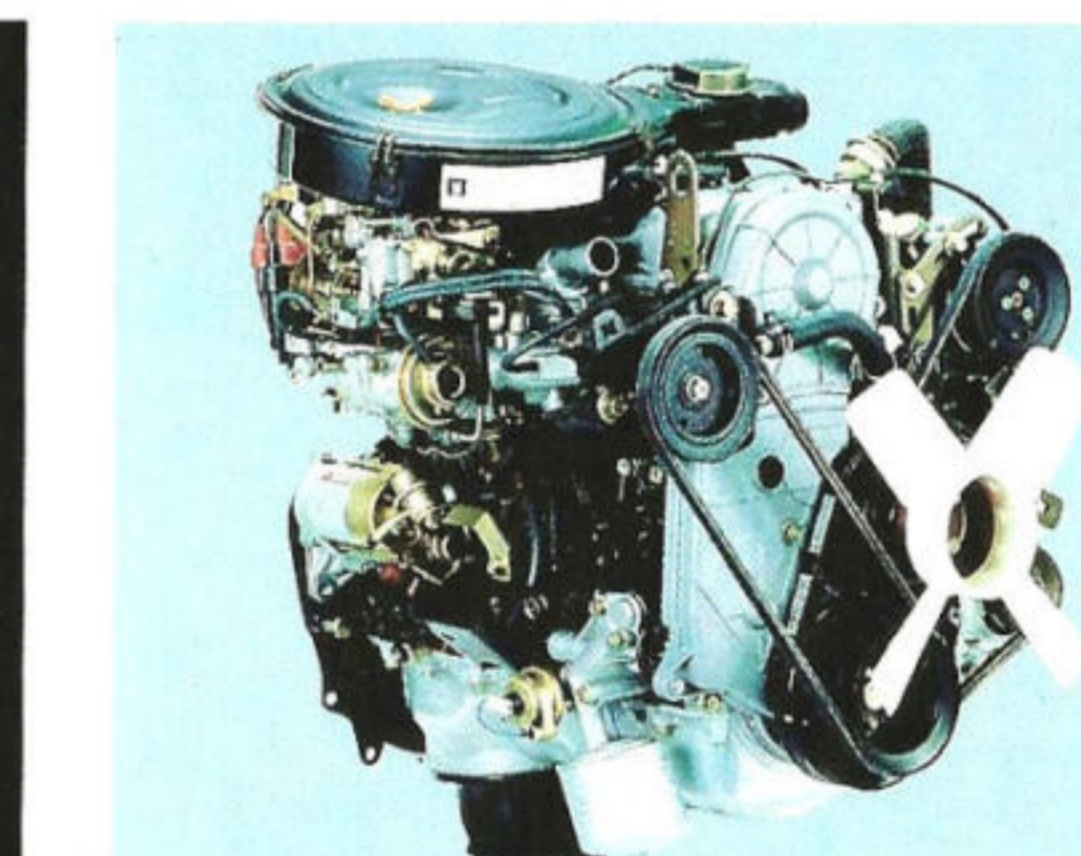
Locking fuel filler door.



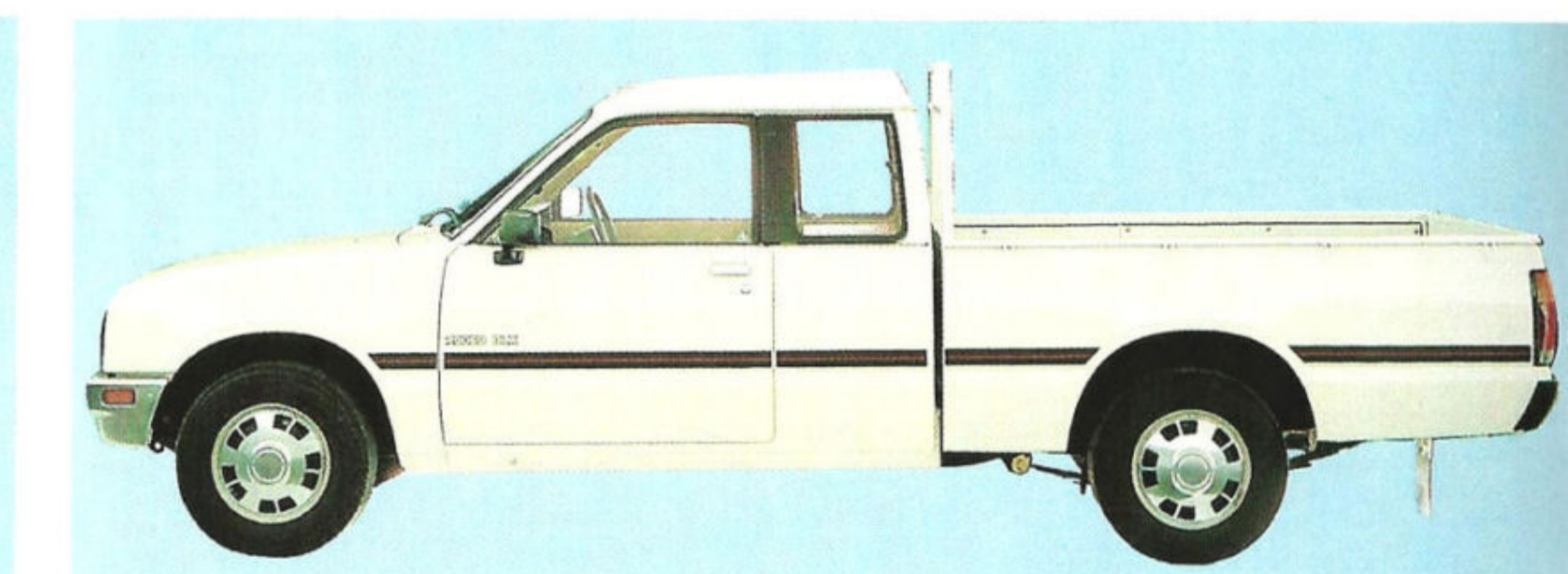
Double wall ute body.



White sports styled steel wheels.



Powerful yet economical 2.3 L petrol engine.



Rodeo Space Cab is a dynamic, sports orientated package.

## RODEO FEATURES.

Within the vastly expanded Holden Rodeo family, you're sure to find a ute that's just right for you. Because now your range of choice includes 3 body variants, 3 levels of comfort, 2 or 4 wheel drive and, in many models, an option of diesel or petrol engines. From the roomy, new Space Cab through to the versatile Sedan Cabs and Utes, there's a Rodeo

raring to play for you and your family. Engineered in Japan by Isuzu for Holden, the new wider Rodeo range incorporates a host of impressive mechanical features designed and built specifically for Australian conditions. For instance, a superbly engineered independent front suspension helps to produce the smooth ride and handling you'd expect from a passenger-type vehicle. New 5-speed transmission with

an overdrive top is standard throughout the range, ensuring total driving flexibility as well as an extra measure of economy. An all-new, large capacity 2.3 litre petrol engine is now available on most models. This highly responsive, yet economical power plant performs without fuss and produces loads of torque for low speed lugging and plenty of "go" for highway cruising as well. The Isuzu

designed Rodeo diesel is a rugged 2.2 litre, 4 cylinder engine that offers remarkable fuel economy with the solid reliability and longevity we've come to expect from these outstanding Japanese engineers. It's fitted with Isuzu's "Quick On Start" system, giving you the key-turn convenience of a petrol engine, coupled with the inherent benefits of diesel power. Rodeo 4WD also offers a smooth,

passenger car ride and sure-footed traction over rough tracks thanks to the proven independent front suspension system. And Rodeo has one more thing going for it... a Holden badge that assures you of the nation-wide backing of the country's best regarded, most experienced dealer network.



### RODEO SHORT WHEELBASE UTE.

This rugged, reliable Rodeo is as much at home in the bush as it is on the bitumen, with 4WD and an independent front suspension to make it easier than ever to negotiate difficult terrain. Available in 3 comfort levels and your choice of petrol or diesel engines, this Rodeo is exceptional value for money.

SWB Base ute features include:

- Front and rear tow hooks.
- Intermittent wipers.
- Laminated windscreen.
- Soft-feel steering wheel.
- Locking glove-box.
- 3 speed heater/demister.
- Push-button AM radio.
- Day/night rear view mirror.
- Double skin body for extra protection.
- Driver and passenger external rear view mirrors.



- Vinyl floor mats.
- 2 position tailgate with "flip" locks.
- Front door arm rests.
- SWB Rodeo Deluxe ute includes:
- Durable, highly serviceable vinyl floor trim.
- Vinyl trim body pillars.
- Knit vinyl bucket seats.
- Quartz halogen headlamps.
- Chrome bumper.
- Tinted side and rear glass.
- Protective body side mouldings.

The luxurious LS also features:

- Tweed fabric faced bucket seats.
- Cloth covered door trims.
- Extensive vinyl cabin trim.
- Cut pile carpet.
- Tachometer, clock, voltmeter and oil pressure gauge.
- Protective rubbers on front bumper.
- Bronze tinted side and rear glass.
- Wide protective body side mouldings.



### RODEO SEDAN CAB.

The Rodeo Sedan Cab equipped with the 2.3 litre petrol engine, 5 speed transmission with overdrive top and room for 5 is perfect for the family man who wants many of the features found in a passenger vehicle plus the added bonus of a half tonne loadspace. In short, this LWB Rodeo 4-door is the perfect family recreational vehicle. There are a

variety of models to choose from in 2 or 4 wheel drive, powered by petrol or diesel engines and all capable of carrying 5 adult passengers in Holden-style comfort.

Feature highlights of the Rodeo Sedan Cab Deluxe include:

- 4 door access.
- Quartz halogen headlamps.
- Laminated windscreen.
- Tinted side and rear glass.
- Protective body side mouldings.

- Knit vinyl front bucket seats.
- Functional knit vinyl door trim.
- Clock, voltmeter & oil pressure gauge.
- Additional cabin insulation.
- Tachometer. (4WD petrol model).
- Soft-feel steering wheel.
- Push-button AM radio.
- Day/night rear view mirror.
- 3 speed heater/demister.
- Cut pile carpet. (4WD petrol model).
- Centre lock on rear tailgate (petrol models).

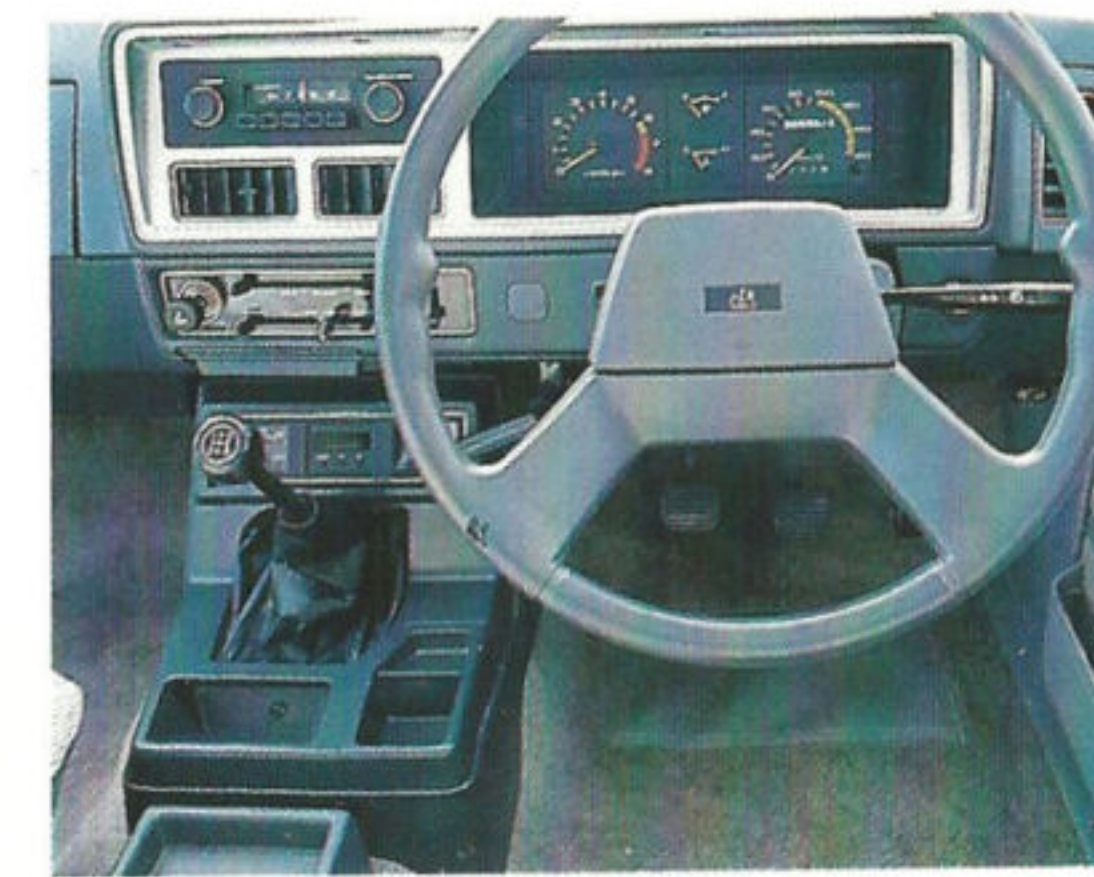
### RODEO SPACE CAB.

The most recent addition to the family is the all-new Space Cab. There's a paddock of room inside, heaps of load space behind and a big new 2.3 litre petrol engine up front. With the longest wheelbase in its class, it can boast the biggest cabin without compromising load space. Available in 2 or 4WD and 2 comfort levels, the Rodeo Space Cab is a versatile,

economical utility that's as suitable for family fun as it is for business.

- Space Cab Deluxe features include:
- Knit vinyl bench seat and door trim.
  - Chrome bumper bar.
  - Quartz halogen headlamps.
  - Tinted side and rear glass.
  - Protective body side mouldings.
  - Full wheel covers (4x2 models).

- LS Space Cab features include:
- Tweed fabric recline bucket seats.
  - Full tweed door trims.



- Cut pile carpet.
- Tachometer, clock, voltmeter and oil pressure gauge.
- Styled road wheels.
- Body side mouldings.
- Bumper with protective rubbers.
- Bronze tinted side and rear glass.

With dynamic good looks, the longest wheelbase and most powerful engine in its class, the Rodeo Space Cab ute will set a new standard in town and out.

