

NEW HOLDEN STATESMAN SERIES II
GIVES YOU THE EDGE YOU DEMAND
TO STAY IN FRONT.

LIMOUSINE LEVELS OF LUXURY,
NEW LEVELS OF HANDLING PRECISION
AND THE PERFORMANCE DYNAMICS
OF A GENUINE DRIVER'S CAR
SEAMLESSLY COMBINE TO PROVIDE
THE ULTIMATE DRIVING EXPERIENCE.



S T A T E S M A N

STATESMAN SERIES II IS THE QUIET
SYNTHESIS OF SUBSTANCE AND STYLE.
PERFORMANCE ORIENTED EVOLUTIONS
REVEAL A CAR STYLED FOR DRIVING.
INSIDE, FURTHER REFINEMENTS ALLOW
THE DRIVER TO FULLY APPRECIATE
THE EXPERIENCE.



It's all about the drive. From the powerful headlight design, the modified grille and the wheels to the new Control-Link Independent Rear Suspension. Control-Link gives all the traction of IRS with precise tracking and wheel control. This enhances good driving and adds active safety.



S T A T E S M A N

The cockpit has been designed to the most exacting ergonomic principles. Set off with sumptuous velour upholstery throughout, it's beautifully complemented by a rich, warm woodgrain trim.



The entire sound system can be accessed with fingertip precision, without needing to take your eyes off the road, or your hands off the wheel.

Statesman's elegantly upholstered front seats gently casset and support. With electric height, tilt, recline and slide adjustment, individual comfort is assured.

As one of the world's most advanced satellite navigation systems, this option provides detailed route maps for just about any destination in Australia. You'll receive both spoken and visual guidance.

Statesman's dual zone climate control allows both driver and passenger to regulate air temperature to suit their individual requirements.

Statesman's Priority Key stores each driver's individual preferences for climate control, audio settings, trip computer, speed alert warnings, antenna height and transmission power/economy mode.

Attention to detail in Statesman is exemplified by the thoughtful inclusion of illuminated vanity mirrors for both driver and passenger.

HOLDEN STATESMAN SERIES II PROVIDES THE ULTIMATE IN PERSONAL TOUCHES. THE DRAMATIC WRAP-AROUND COCKPIT PROVIDES A TOTAL EXPERIENCE FOR THE DRIVER. AND THE DRIVEN.



Statesman Series II has the largest passenger cabin space of any Statesman ever. In the rear seats, the legroom is so generous it leads the Prestige car class. The smooth ride is complemented with the quiet luxury of soft, stylish velour trim.

Vehicle fitted with optional Howe leather seat trim.



Standard velour trim available in both Anthracite (above) or Light Shale.

STATESMAN HAS ALWAYS LED THE WAY.
 WITH MORE ROOM. A QUIETER RIDE AND
 LIMOUSINE QUALITY APPOINTMENTS.
 STATESMAN SERIES II TAKES COMFORT
 TO NEW DIMENSIONS.



Inside Statesman's 541 litre boot, the two-way boot luggage net helps prevent damage to valuable cargo by ensuring that items, large or small, remain secure in transit.



Even with long or awkward loads on board, Statesman's rear centre fold-down 'ski' hatch leaves ample room for two rear passengers to travel in total comfort.



Conveniently located in front of the rear passenger seat cushion, this handy storage pocket is just one of the clever small item storage solutions in the Holden Statesman.

STATESMAN

YOU CAN DEMAND MORE FROM
STATESMAN SERIES II BECAUSE
IT'S DESIGNED TO PERFORM AT THE
HIGHEST POSSIBLE LEVELS.
THIS IS A CAR UNASHAMEDLY DESIGNED
WITH THE DRIVER IN MIND.



Reduce effort and enhance economy on long distance touring with fingertip cruise control, featuring a new, simple twist action for accurate speed adjustment.

Stylish and dramatic, the Holden Statesman is equipped with traditional yet sportingly styled 16" spoked alloy wheels. Wide tyres provide tenacious grip and handling on wet or uneven surfaces.

Negotiating a corner can at times be a challenge, particularly when visibility is low. With Statesman's cornering lamps the turning path at night is brilliantly illuminated at every turn. Additionally, fog lamps light the way when bad weather rolls in.

Vehicle shown fitted with optional rear spoiler.

HOLDEN CAPRICE SERIES II IS LUXURY
MOTORING IN ITS PUREST FORM.
A PERFECT BLEND OF SIMPLE,
SOPHISTICATED DESIGN, CLASSIC GOOD
LOOKS AND AN UNAPOLOGETIC DASH
OF ATTITUDE.

New Caprice Series II is a car endowed with the performance,
the prestige and the presence of a classic thoroughbred. Outside,
higher levels of formal elegance can be seen with new
alloy wheels enhancing the car's confident classic lines.



C A P R I C E





C A P R I C E

THE CAPACITY TO RELAX
IS THE ULTIMATE INDULGENCE.
HOLDEN CAPRICE SERIES II
UNASHAMEDLY TAKES COMFORT
TO THE HIGHEST LEVEL, IMMERSING
BOTH DRIVER AND PASSENGERS
IN LUXURY. THEN ADDS
FURTHER REFINEMENTS.

Long, sleek and sensuous, the rear compartment of the Holden Caprice Series II has been designed to elevate passenger space and comfort to unprecedented levels. Every detail has been considered, every desire anticipated, every indulgence granted.

Caprice Series II gives rear passengers the last word in cabin comfort. The rear overhead console switches not only adjust climate control temperature and fan speed, but also radio, cassette and CD.



Caprice Series II's elegant plush pile carpeted floor mats are embossed with their own stylish and distinctive emblem.



Digital Signal Processing simulates various live performance venues. An equaliser enhances particular styles of music. The 12 speakers can be instantly re-configured to deliver the ideal stereo image.

A 10 disc CD changer is located in the boot. This enables you to drive further on your favourite music without having to stop and change discs.

Two stereo headsets plug into the 'multi-mode' sound system to enable rear passengers to hear a different medium — radio, cassette, or CD — to that being heard by the other occupants. They can even adjust the sound level without affecting other passengers.



C A P R I C E

WITH TECHNOLOGY'S LATEST ADVANCES
AT YOUR FINGERTIPS, FROM THE MOMENT
YOU TAKE THE WHEEL OF THE HOLDEN
CAPRICE YOU ASSUME YOUR RIGHTFUL
PLACE, IN TOTAL CONTROL OF THE
DRIVING EXPERIENCE.



C A P R I C E



From the stylish cockpit, to the fully automated driver's seat with memory settings for three, and superbly upholstered leather seating, every detail of the lavish interior proclaims Caprice Series II's rightful status as Australia's most innovative and prestigious touring car.

Steering wheel audio controls access the entire sound system with fingertip precision - without taking your eyes off the road, or your hands off the wheel.

Intelligent design has created an intelligent car. Able to recognise a long list of preferences for two separate drivers, Caprice Series II's Priority Keys also store the settings for the position of the driver's seat and external mirrors. The full list of Priority Key features creates, arguably, the world's best recognition of the owner by a car.



Caprice's electrochromatic rear vision mirror automatically detects vehicles approaching from the rear with their headlamps on, and adjusts the tint level to reduce unsafe glare.

Left hand side mirror dips when you select reverse to reveal the kerb and other low-level obstacles. Both exterior mirrors are also heated to clear morning dew.

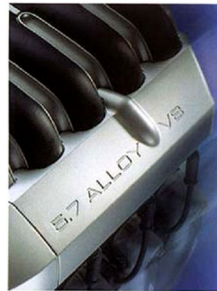
Conveniently located at the base of the driver's seat, memory buttons can be programmed for the individual preferences of three different drivers. And this is in addition to settings for Priority Key holders!



STATESMAN, AND CAPRICE, SERIES II:
THE EXPRESSION OF REAL POWER.
THE EMBODIMENT OF FREEDOM.
EXACTLY WHAT YOU'D EXPECT FROM
THE QUINTESSENTIAL DRIVER'S CAR.



Holden's trio of dynamic engines represents freedom. Freedom of choice. Freedom of movement. The ultimate freedom to conquer the extreme conditions thrown up by Australia's vast terrain and challenging climate. The simple freedom to negotiate inner urban congestion with ease and efficiency.



5.7 LITRE GENERATION III ALLOY V8

This lightweight engine delivers 225kW of power and 460Nm of torque. The lower weight means softer, more supple front suspension for a smoother ride. Less weight in the front end allows more precise steering response which translates to more agile handling.

The one piece induction system, made from composite materials, delivers a smoother airflow and superior breathing, while the inlet manifold has superior air flow for performance and fuel economy.



SUPERCHARGED 3.8 LITRE V6

This outstanding 6 cylinder power base, available only in the Statesman, provides 171kW of power, and 375Nm of torque. Smooth progressive power, and substantial torque across the rev range makes the engine responsive and easy to drive.

The Eaton M90 Supercharger is a crankshaft driven air pump that compresses more air into the cylinders than a naturally aspirated engine.

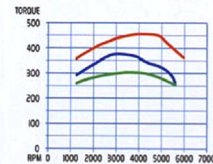
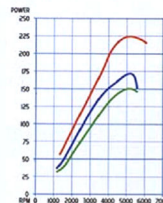
More air, and more fuel, gives the performance levels of a much larger engine. It is, without doubt, elite technology; shared with the likes of Aston Martin, Mercedes and Jaguar.



ECOTEC 3.8 LITRE V6

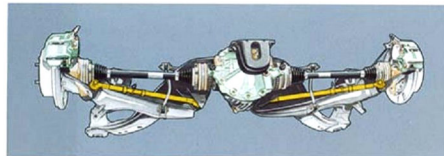
This V6 engine is compact and light, providing excellent ride and handling, while delivering 152kW of power and 305Nm of torque.

Friction reduction techniques used on moving parts, especially pistons, rings and valve train, sophisticated engine management, a diecast inlet manifold, for improved air flow, and a stainless steel long life exhaust all combine to provide high power with outstanding fuel efficiency.



DESIGNED TO LET YOU CONFIDENTLY
HANDLE THE UNEXPECTED: SUPERIOR
DESIGN. SOPHISTICATED ENGINEERING
AND THE LATEST TECHNOLOGICAL
ADVANCES FREE THE DRIVER TO
CONCENTRATE ON THE ROAD AHEAD.

The comprehensive world-class safety package, integrated into Statesman and Caprice Series II, provides more than just protection. 'Twilight sentinel' automatically switches headlamps on at twilight. Variable, intermittent, road-speed sensitive wipers clear rain faster as the car speeds up. A wide stance on the road provides stable cornering and minimal body roll. Rear wheel drive, like BMW, Jaguar and Mercedes' large cars, gives the driver the best possible combination of ride and handling.



Control-Link IRS adds safety when deceleration is needed to negotiate a challenging bend. The suspension is tuned to take a slightly tighter cornering line for the driver, using the Control-Link to hold the tail in check with powerful rear grip.



New Control-Link Independent Rear Suspension has been introduced to provide more control without sacrificing comfort. Control-Link Independent Rear Suspension gives all the traction of IRS with precise tracking and wheel control, helping tame a challenging corner by holding the tail in check, helping the driver smoothly negotiate the turn intended. This enhances good driving, forgives some over-exuberance, and adds active safety.



Holden's Traction Control (TC) utilises Anti-lock Braking System (ABS) technology to help prevent loss of traction when accelerating on tram tracks, wet roads, snow and ice, or on 'split surfaces' such as when one wheel is on the gravel shoulder of a bitumen road.

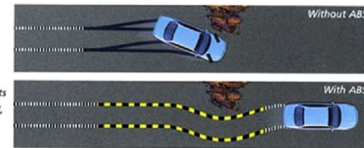


When an unavoidable emergency occurs, this easily accessible warning triangle provides an added safety feature for both you and other drivers. The Caprice even provides gloves, a handy mat, and cleaning cloth.



With the option of the Generation III V8, Statesman Series II has the power to pull loads, effortlessly. And with a finely tuned combination of road-speed sensitive steering, Control-Link Independent Rear Suspension and advanced Traction Control, Statesman Series II gives you the control you demand.

The Bosch 4-channel Anti-lock Braking System, with speed sensors on each wheel, constantly monitors for wheel lock-up, ensuring peak efficiency of braking. ABS assists in maintaining steering control, even under full braking, to enhance overall driving safety.



Vehicle shown fitted with optional rear spoiler.

DRIVEABILITY



BOTH STATESMAN, AND CAPRICE,
SERIES II PROVIDE REASSURING
LEVELS OF PROTECTION.
PROTECTION IN THE EVENT OF REAL
EMERGENCIES AND IN UNEXPECTED
OR CONFRONTING SITUATIONS.

The remote control key engages and releases door deadlocks for maximum security at the push of a button. The key can selectively unlock just the driver's door to help prevent an intruder entering elsewhere. It can also open the boot, which is especially useful when you have your hands full. Both Statesman, and Caprice, Series II offer the most advanced safety technology available. Both cars have comprehensive occupant safety packages which are testament to Holden's continuing commitment to providing world class safety innovations.



The remote key operates tail lamps, headlamps or parking lamps as preferred, to show the location of your car in the dark. It also operates the interior lighting so you can check the cabin before entering.



Full size driver and front passenger airbags inflate within milliseconds to help reduce the risk of serious facial and internal injuries in the event of a frontal collision.



Holden's unique two-stage side impact airbags first help protect the chest, then the neck and head in the event of a side-on collision. Each airbag is in the front seat bolster for optimum positioning regardless of seat position or angle.



In the event of a collision, pyrotechnic front seatbelt pre-tensioners rapidly retract to help prevent occupants sliding under the belt or being thrown forward.

Standard on Caprice Series II, and optional on Statesman Series II, Holden Assist is an interactive primary security system. It does more than send for roadside assistance. It adds a whole new dimension to the words 'Holden Customer Care'.

If you lock your keys in your car. Once the identity of the owner has been validated Holden Assist can unlock your car remotely by sending an electronic signal.

If your battery is low. The system will automatically send an alert. Holden Assist will attempt to contact you.

If you need roadside assistance. Press the "Holden Assist" button for help to be sent.

In an emergency. Press the red SOS button to contact the National Emergency Response Centre (NERC). Staff will attempt to make voice contact, locate your position and contact emergency services if needed.

In the event of a crash. The system will automatically contact the NERC that an airbag has deployed. The operator will contact the vehicle and attempt to make contact with the occupants. If there is no response, or if requested, emergency services will be notified.

If someone tries to gain unauthorized entry. The system will automatically contact Holden Assist, and the operator will establish voice contact. If the person in the car is unable to be identified as the owner, the Police will be alerted.

If your car is stolen. Holden Assist is able to locate and track your stolen car. Once located, Holden Assist will then notify the Police. Then, working in conjunction with the Police, they are able to safely immobilise the engine.



AN UNRIVALLED FEELING OF SECURITY.
INTRODUCING HOLDEN ASSIST.
THE WORLD'S MOST ADVANCED SATELLITE
CAR MONITORING SYSTEM PROVIDES A
FEELING OF SECURITY AND IS ONLY
AVAILABLE IN SOME OF THE WORLD'S
MOST PRESTIGIOUS CARS.



HOLDEN ASSIST

SECURITY

GETTING PERSONAL WITH YOUR HOLDEN



Vehicle fitted with Holden By Design spoiler and 17" x 8" 'H' series alloy wheels.



Vehicle fitted with Holden By Design spoiler and 17" x 8" 'X' series alloy wheels.

HOLDEN BY DESIGN

Your car is a reflection of your personality. You're not like anyone else. Why should your car look the same as anyone else's? And that's what Holden By Design is all about. Added to that is the knowledge that Holden By Design personalised enhancements are factory fitted and carry Holden's comprehensive 3 year or 100,000km warranty. The combinations are endless. The choice, yours.

Holden By Design's tailored sunroof is electronically controlled from convenient ceiling mounted controls for preferred positioning in the slide or tilt mode and even automatically closes when you lock your car.



HOLDEN ACCESSORIES

Our specially designed range of accessories will ensure your New Statesman or Caprice is just as you want it. From giving your car a personal touch to practical considerations such as tow bars, our accessories have been designed to complement your car, and make the most of your drive.



Don't let stone chips and scratches detract from the superb paint finish. This durable acrylic custom design can be easily removed for cleaning.



Tinted acrylic sunguard provides excellent heat protection for rear seat passengers.



Let the fresh air in and keep the wind and rain out with this full sized Weathershield.



Integrated into the fascia design, these fully moulded mudflaps are both practical and stylish.



Holden roof bars let you carry luggage and sporting equipment without sacrificing interior space.



Holden's range of tow bars have been specifically designed and tested. See your Dealer to get the right bar for your needs.



Help keep your Holden in its original condition with these fully tailored, high quality long pile carpet floor mats, now with an anti-slip backing.



A new style of platform that avoids drilling holes in the console. A universal phone holder is also available.

STATESMAN/CAPRICE FEATURES

S = Standard feature, O = Option, H = Option from Holden By Design, A = Accessory

	Statesman	Caprice
POWERTRAIN		
152kW, 3.8 litre ECOTEC V6 engine	S	O
171kW, 3.8 litre Supercharged V6 engine	O	S
225kW, 5.7 litre Generation III alloy V8 engine	O	S
Electronic control 4-speed automatic transmission	S	S
Power or economy mode: Oil-to-air cooler for towing to 2100kg	S	S
Cruise control	S	S
Limited slip differential (Mandatory option when V8 fitted)	O	S
MECHANICAL		
Variable ratio road speed sensitive power steering	S	S
Control-Link Independent Rear Suspension	S	S
Self-leveling suspension, with Superflex shock absorbers	O	O
Traction Control (TC), Off switch	S	S
WHEELS		
16" x 7" alloy wheels, 225/55 R16 95V tyres	S	S
17" x 8" "X" series 8 spoke alloy wheels, 235/45 V-rated tyres	H	H
17" x 8" "C" series 5 spoke alloy wheels, 235/45 V-rated tyres	H	H
17" x 8" "H" series 9 spoke alloy wheels, 235/45 V-rated tyres	H	H
EXTERIOR		
Chrome grille	S	S
Bumpers in body colour	S	S
Fog lamps, front	S	S
Cornering lamps	S	S
Headlamp guards	A	A
Bonnet protector	A	A
Radiator insect screen	A	A
Mudflaps (moulded)	A	A
Metalic paint	S	S
Two-tone paint	S	S
Tone-on-tone paint	S	S
Exterior mirrors in body colour	S	S
Chrome window surrounds	S	S
Rear door spoiler, lip type	H	H
License plate frames, standard height or slimline	A	A
Full immersion body corrosion protection	S	S
Full stainless steel long life exhaust system	S	S
DRIVER		
Steering wheel height & reach adjust	S	S
Leather-wrap wheel	S	S
Leather-wrap wheel with woodgrain highlights	S	S
Leather & chrome on gear shift & handbrake levers	S	S
Electric remote boot release	S	S
Remote fuel filler door release	S	S
Electric remote control exterior mirrors	S	S
- Heated, Auto off	S	S
- Passenger side exterior mirror daps when reverse gear selected to show low-level hazards	S	S
Electrochromatic interior rear vision mirror reduces headlight glare automatically	S	S
Variable intermittent, road speed sensitive wipers	S	S
Electric rear window demist, Auto off timer	S	S
Analogue clock	S	S
Headlamps auto on at twilight	S	S
Headlamps auto off after leaving parked car	S	S
Tip computer, including		
- Average speed, Odometer, Average economy on trip	S	S
- Elapsed trip time, Trip distance, Fuel used on trip	S	S
- Audible & visual speed warning (if adjustable settings)	S	S
- Distance to empty, instant economy	S	S
- Trip distance to go, Time to go, Remaining fuel	S	S
Service reminder, Approves 1,000km before service is due	S	S
Global positioning system (GPS)	H	H
Auto transmission 'gear selected' (PRND321) indicator in instrument cluster	S	S
Tachometer	S	S
Variable instrument dimming	S	S
Warning lamps include: Oil pressure, Alternator, Check engine, Brake failure, Parking brake on, Fasten seat belt reminder at engine start, Rear lamp failure	S	S
Lamp & chime warning, Parking brake on while vehicle moving, Low fuel, High engine temperature	S	S
Mobile phone power point, Pre-wired antenna	S	S
Mobile phone holder	A	A
Sound system able to accommodate cellular phone	S	S
Auto mute when phone is in use	S	S
SOUND SYSTEM		
AM/FM stereo electronic tune radio, Local/Station selector switch, Automatic station store memory, Preset station scan	S	S
Sound system remote controls on steering wheel	S	S
Cassette player, Auto reverse, Soft touch controls, Automatic program search, Dolby noise reduction, Metal tape equalisation, Blank tape slip	S	S
Compact disc changer (10 discs)	S	S
Equaliser, to enhance each music style - jazz, rock, classical	S	S
Digital signal processor to simulate venues, eg concert hall, stadium, club	S	S
'Position' button to shift stereo image for different passenger loads, from full cabin to driver sitting alone	S	S
10 speaker elements, including subwoofers, Total 260 watts	S	S
12 speaker elements, including subwoofers, Total 260 watts	S	S
Headsets for rear passengers, two pairs	S	S
'Multi-mode' function to allow headsets choice of radio, cassette or CD	S	S
Rear overhead console remote control of radio, cassette & compact disc functions	S	S
Power antenna, fully automatic, driver adjustable pre-setting for height, Auto retract with remote control Priority Key	S	S
Rear window 'diversity' FM antenna	S	S
SEATING		
Seat trim in velour	S	S
Seat trim in leather	O	S
Bucket seats with high rise padded leather console armrest	S	S
Padded front seat head restraints, Height & tilt adjust	S	S
8-way electric adjustment of rear seats, Side forecast, Cushion tilt, Height, Recline	S	S
- Memory of settings for 3 drivers	S	S
Driver & front passenger seat adjustable lumbar support	S	S
Driver's left footrest, adjustable	S	S
Driver airbag (full size)	S	S
Front passenger airbag (full size)	S	S
Driver & front passenger side impact airbags	S	S
Front Luggage seat belts have webbing clamps & pyrotechnic pre-tensioners, Buckle mounted to seat for consistent fit when seat moved forward or back	S	S
Front seat belt sash height adjust	S	S
Anti-submanning ramps in seats reduce risk of sliding under seat belt in a collision	S	S
All seat belts retracting lapshaws	S	S
Stalls for all seat belts for easier buckle-up	S	S
Rear seat centre fold-away tray	S	S
- Centre armrest	S	S
Three height adjustable rear seat head restraints	S	S
CHILDREN		
Rear seat child restraint anchor points	S	S
Childproof rear door locks	S	S
Rear power window override switch	S	S
CABIN COMFORT		
Climate Control, Auto/manual mode, Rear outlet vents	S	S
Dual temperature zone, driver & front passenger	S	S
Rear overhead console remote control of climate control	S	S
Priority Key for 2 people automatically restores when unlocking car settings for Climate control, Sound system, Trip computer, Speed alert, Transmission power/economy mode, Instrument cluster, Antenna height, Headlamps-off time delay	S	S
- Restores preferred driver's seat position	S	S
- Restores preferred exterior mirrors position	S	S
Power windows, front & rear, Express down driver's window, Remain powered on time delay after engine switched off	S	S
Electric sunroof, Auto close when vehicle immobilised	H	H
Cigarette lighter & ashtray, front & rear	A	A
Vanity mirror, driver & passenger side, illuminated, with cover	S	S
Vanity mirrors, rear, illuminated	S	S
Interior lighting, time delay on entry, Automatic illumination when ignition is turned off, Auto off after 1 hour	S	S
Courtesy lamps on front & rear doors	S	S
Footwell lamps, front	S	S
Front reading spotlights	S	S
Rear reading lamps	S	S
Push out pile carpet	S	S
Carpeted floor mats, tailored	A	A
Carpeted floor mats, Embossed	S	S
Padded leather upper door trim, Includes woodgrain style insert	S	S
Chrome door handles	S	S
Rear vents - woodgrain style surround	S	S
Passenger overhead assist handles, folding, front & rear	S	S
Windscreen sunshade, front	A	A
Weatherstrips, in standard wood or slimline, driver & front passenger window	A	A
Rear Sunguard	A	A
STORAGE, CARGO, TOWING		
Two cup holders in centre console & rear seat centre fold-away tray	S	S
Front door storage bins	S	S
Storage pocket rear of driver & passenger seat	S	S
Storage pockets in front of rear seat cushions	S	S
Storage in rear seat armrest	S	S
Fold-down rear seat centre 'ski' hatch for long loads	S	S
Carpeted boot floor & spare wheel cover, Boot lid lining, with handle to assist closing	S	S
Luggage net (adjustable) in boot to keep small items in place	S	S
Storage container in spare wheel well	S	S
Emergency highway kit, Kneeling mat, Gloves, Cleaning cloth, Towing equipment (see specifications)	A	A
SECURITY		
Remote control Priority Key	S	S
- Operates interior lighting	S	S
- Operates exterior lamps, to show location of car at night	S	S
- Engages door duallocks when pressed twice, Releases duallocks	S	S
- Operates central locking for keyless entry through driver's door only, Operates all doors when button kept pressed	S	S
- Enables/disables alarm system	S	S
- Opens boot	S	S
- Disables remote boot release button in glovebox (when locking)	S	S
Priority Key has rolling security code	S	S
Horn chips, if door is ajar when remote locking	S	S
Flashing red interior warning lamp shows vehicle is protected	S	S
Engine disabled to immobilise vehicle when key removed from ignition, Unique code for each vehicle	S	S
Doorlock in driver's door only, Lock cylinder 'freezeheels' if anything other than correct key is inserted	S	S
Slip-type steering lock, If steering wheel is forced, front wheels will not turn	S	S
Sound system security electronics using PIN	S	S
Headlamps auto off, Programmable time delay	S	S
ROAD SAFETY		
Emergency mode after seat belt pre-tensioners are triggered	S	S
On-board computer turns engine & fuel pump off	S	S
Unlocks doors, Turns dome lamp on	S	S
Warning triangle for roadway, stored in boot lid	S	S
First aid kit, accessible via 'ski' hatch	S	S
Holden Assist		
- Roadside assistance, call operator on system	S	S
- SOS button, calls operator, who locates you for emergency services	S	S
- Airbag deployment, location found automatically & emergency services notified	S	S
- Includes 24-hour operator unit/calls	S	S
- Unauthorised entry, police alerted	S	S
- Car stolen, tracking & immobilisation	S	S
- Battery low, operator contacts driver	O	S

STATESMAN/CAPRICE SPECIFICATIONS

	ECOTEC V6	SUPERCHARGED V6	GENERATION III V8
ENGINE	V ⁶ configuration, Cold air intake, OHV design with cross flow cylinder heads, Low friction technology 'Hot wire' air mass metering, Sequential fuel injection, High energy, distributorless, ignition, Twin knock control sensors, Computer diagnostics, Electric cooling fan, Stainless steel exhaust		
		Electronic control supercharger	Aluminium alloy block & cylinder heads
			High flow air cleaner
			Low restriction dual exhaust
	Triple coils		Coil-per-cylinder
		Cross-bolted main bearings	
	4.60t		6.60t
	97 x 86		99 x 92
BORE x STROKE (mm)			
CAPACITY (cc)	3791		5665
COMPRESSION RATIO (C1)	9.4	8.5	10.1
RECOMMENDED PETROL OCTANE	91 (ULP)	95 (PULP) 91 (ULP)	91 (ULP)
POWER (DIN, kW)	152 @ 5200rpm	171 @ 5200rpm (PULP)	225 @ 5200rpm
TORQUE (DIN, Nm)	305 @ 3600rpm	375 @ 3000rpm (PULP)	460 @ 4400rpm
GEAR RATIOS	1st 3.06	2nd 1.6R	3rd 1.00
DRIVE RATIO		Rear Ratio 3.08:1	4th 0.70
FUEL ECONOMY (L/100km)* (mpg)	City 12.0 [23.5] 11.5 [24.5] Hwy 7.2 [39.3] 7.0 [40.3]	City 13.5 [20.9] (PULP) Hwy 8.0 [35.3] (PULP)	City 14.0 [20.2] Hwy 8.5 [33.2]
PETROL TANK (L)	75		
BRAKES	Four wheel disc, Ventilated front disc & lined caliper		
ANTI-LOCK BRAKING SYSTEM (ABS)	4 channel		
TRACTION CONTROL (TC)	When sensors detect imminent rear wheel spin, engine torque is reduced if one wheel is about to spin, braking is applied to torque to wheel with better traction		
SUSPENSION	Front: MacPherson strut, Direct acting stabiliser bar, Progressive rate coil springs	Rear: Control-Link Independent Rear Suspension (IRS), Semi-trailing arm, Progressive rate minibool coil springs, Stabiliser bar	
Self-leveling suspension (Option)	An electronically controlled self-leveling system that maintains the vehicle at a constant trim height, independent of load		
STEERING	Variable ratio rack & pinion, Variable ratio road speed sensitive power assist		
TRACK (mm)	Front: 1559, Rear: 1577		
TURN CIRCLE (left to right, m)	11.3		
WHEELBASE (mm)	2939		
DIMENSIONS (mm)	Length 5237	Width 1847 (Mirrors) 2018	Height 1459
			Ground clearance 125
INTERIOR DIMENSIONS (mm)	Leg	Shoulder	Head
	1070	1515	992
	1099	1501	981
			1471
CARGO (L)	541		
WEIGHT (Est. kg)	Statesman 1678	1718	1735
Caprice 1689	1722	1743	
TOWING	Holden approved 1200kg, 1600kg & 2100kg towing equipment is available. See your Holden Dealer for details.		
SERVICE	1500km (free) inspection, 10,000km then every 10,000km. 10,000km & 20,000km are free at any Holden Dealer if they occur within 12 months of purchase. Includes free labour & parts, excludes oil & non-scheduled work.		
	Maintenance-free, long life, accessory drive belt with automatic tensioner. Dual belt on V8. Holden Dealer 24 Hrly 5d, Murrumbidgee, Vic. 3163, AUGUST 2001, GPR0327 A010013		

A word about this catalogue. We have tried to make this catalogue as comprehensive and factual as possible. However, since the time of printing some of the information you'll find here may have been updated. Also, some of the equipment shown or described through this catalogue may have been changed and/or is available at extra cost. Further, Holden Ltd reserves the right to make changes at any time without notice, in prices, colours, materials, equipment and models. Your Holden Dealer has details, and before ordering, you should ask them to bring you up to date. No Holden Dealer or other person is authorised or permitted to give or make any statement, assertion or undertaking in relation to the quality, performance characteristics, descriptions or fitness for any purpose of any Holden product which is in variance with any written statement, assertion or undertaking on any of these subjects given by or for Holden Ltd, A/N. 84,006,893,232 or General Motors-Holden Sales Pty. Ltd. A/N. 80,004,688,831 in its published literature, and neither company accept any liability for any such unauthorised action. Holden Ltd and General Motors-Holden Sales Pty. Ltd. have authorized dealers in many parts of Australia for the sale of service parts and the provision of services to owners of Holden's products. Every endeavour is made to ensure that such dealers carry adequate stocks of service parts, but neither Holden Ltd, nor General Motors-Holden Sales Pty. Ltd. makes any promise other than that contained in the New Vehicle Warranty given by Holden Ltd. such parts or service facilities will be available at any specific location or at any particular time. Express warranties offered for Holden product under the conditions set out in all vehicle handbooks. Details also available from Holden or request. Fuel consumption figures based on AUST17 tests. These figures are provided to assist you in comparing the fuel consumption of Statesman and Caprice with other vehicles. The actual fuel consumption will depend, however, on many factors, including your driving habits, the prevailing conditions and your vehicle's equipment, condition and use. Copyright: Holden Ltd. Printed by Murrumbidgee Press Colour 24 Hrly 5d, Murrumbidgee, Vic. 3163, AUGUST 2001, GPR0327 A010013

Smart choices.

A smart way to get into a new Holden is by talking to Holden Financial Services. A wide range of options is on offer and you can select the terms, conditions and pricing structure to best suit your lifestyle. The SmartChoices range offers affordable, flexible, low monthly repayments¹ and the security of a guaranteed minimum buyback price². For more information contact your Holden Dealer or call Holden Customer Assistance on 1800 033 349.

SmartCare.

Holden offers a range of competitively priced insurance products that provide tailor-made protection. The SmartCare comprehensive policy offers new car replacement, agreed value and a genuine Holden Approved parts guarantee plus a range of additional premium benefits.³ For more information see your local Holden Dealer or call the Holden SmartCare Hotline on 1800 060 094.

The Holden MasterCard.

With the Holden MasterCard, 5% of every dollar you spend on credit purchases goes toward your rebate on a new Holden.⁴ You can redeem a maximum core rebate of \$3000 on any new Holden.⁵ Use your Holden MasterCard at exclusive Holden MasterCard Bonus Partners and you'll receive an extra 1% bonus rebate that you can earn. You'll also pay no annual card fee in the first year, get up to 45 days interest free on credit card purchases, and a competitive rate of interest.⁶ To apply, visit any Westpac/Challenge Bank/Bank of Melbourne branch, your local Holden Dealer or call the Holden MasterCard 24-hour customer line on 1300 650 696.

The package wouldn't be complete without extra peace of mind.

We're with you all the way.

Holden drivers are backed by the most comprehensive customer care package on the road. With over 300 dealers and 900 Roadside Assistance centres nationwide, few other cars in Australia are supported with the level of customer care offered to Holden owners.

3 year or 100,000km New Vehicle Warranty.

Your peace of mind, guaranteed. Every Holden comes with a 3 year or 100,000km New Vehicle Warranty,⁷ whichever comes first. This factory backed bumper to bumper warranty covers everything including the engine, transmission, clutch, interior and exterior components.

An extended New Vehicle Warranty is able to be purchased. For more details, contact Holden Customer Assistance on 1800 033 349 or your Holden Dealer.

3 year/24 hour Roadside Assistance.

Go anywhere, anytime, with complete confidence. Holden Roadside Assistance, one of Australia's most comprehensive assistance packages, is complimentary for 3 years or 100,000km, whichever comes first.⁸

In the event of the unexpected happening, from your keys being locked in the car to mechanical and accident advice, you can get in touch with our 24 hour hotline, 365 days of the year, by calling the toll-free number 1800 817 100.

Holden Statesman and Caprice receive the added benefits of Holden Roadside

Assist Ultra which includes accommodation, alternative transport, rental car, assistance in case of accident, theft and medical emergency and Australia-wide vehicle recovery.

This service is delivered by Assist Australia and the combined resources of the Australian motoring organisations.

A decidedly different level of service.

Dealer support when you need it, where you need it.

With dealers strategically located nationwide, the Holden Service Network is the largest in the country. Our service centres are staffed by a team of trained technicians who have access to regular factory training, bringing them up to speed on the latest technology.

If you want to know more about the extensive benefits of Holden ownership, contact Holden Customer Assistance on 1800 033 349, Monday - Friday, 8am - 6pm, EST.

The Holden Luxury Edge⁹

Holden Statesman and Caprice have the added security of our Holden Luxury Edge program.

This program provides 12 months or 20,000km free service, whichever comes first.¹⁰ This means the first three services or 1,500km, 10,000km and 20,000km are all free provided they fall within the 12 month period. Services include all labour and parts (except oil) as per the owner's handbook and exclude non-scheduled service work or repairs.



Heron



Quicksilver



Tungsten Mica



Shanghai Mica



Laurel Mica



Grey Storm Mica



Vespers Mica



Phantom Mica

1. Fees and charges apply. For the annual percentage rate applicable to you contact your local Holden Dealer. 2. Conditions apply. A disposal fee of \$385 (incl GST) applies plus charges for excess wear and tear or excess kilometres may also apply. 3. Refer to the policy wording for specific terms, conditions and exclusions. 4. Earning and redemption of rebate is subject to the Holden MasterCard Rebate Program Rules. A maximum of \$3000 in the form of Holden MasterCard 10% rebate plus any additional bonus rebate accumulated via the partner program accrued over a maximum of 5 years may be applied per eligible vehicle sale for vehicles where a fleet allowance is paid and are not eligible for Holden MasterCard rebate. 5. The interest-free period applies where the card account is fully paid by the due date each month. 6. Refer to your owner's handbook or see your Holden Dealer for full terms and conditions. 7. Roadside Assistance may not be available in some rural areas. Refer to your Holden Roadside Assistance booklet or see your Holden Dealer for terms and conditions. 8. Refer to your owner's manual or see your Holden Dealer for full terms and conditions. 9. Your free Statesman and Caprice services must be conducted by an authorised Holden Dealer.

Variations between the colours shown and actual colours may occur due to the printing process. Actual vehicle colours may appear different under certain light conditions.

