



*GTO*



255kW GTO Coupé

*GTS*



300kW GTS Coupé



All good things come to those who wait.



You still remember the first day you saw it. It created an indelible impression that's still with you.  
And you told yourself - one day you would own a car like this.

For the lucky few, the wait is over.



We've rekindled driving excitement for a new generation. Introducing the new HSV Coupé. A car that takes heart-stopping performance to the next level. Quite simply, the quintessential expression of the Coupé tradition and the ultimate HSV. And isn't that what you've always wanted?



# The HSV GT0 Coupé

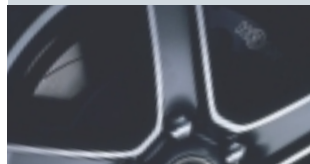
A genuine GT0 - truly worthy of the famous Gran Turismo Omologato tag. A name steeped in automotive history. Indeed, in the '60s and '70s the Pontiac GT0 created the muscle car legend.

And now the legend is reborn. The HSV GT0 Coupé - a grand touring car that combines the personal style of the past with performance you would expect from HSV today.

"Shark Gill" vents lend a predatory element to GT0 while unique 18-inch alloy wheels are influenced by the original HK Monaro 327.

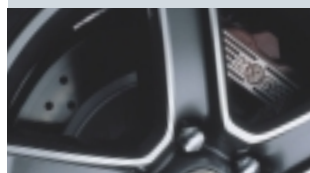
But make no mistake, the 255kW 5.7 litre LS1 V8, grooved HSV Performance brakes and race-tuned HSV suspension pay homage to no one.

The 5-spoke 18 x 8 inch alloy wheels and premium Bridgestone 235/40 ZR 18 S03 directional tyres are matched to HSV's race-tuned suspension.



HSV's Grooved Performance brakes are standard on GT0

Four-piston Cross-Drilled HSV Premium brakes are available as an option



Exclusive black leather and Lismore interiors feature a unique HRT style race suit theme. All HSV Coupés are equipped with driver and passenger airbags, side airbags, traction control, anti-lock brakes, twilight sentinel headlights, dual-zone automatic climate control air-conditioning, 8-way power seats with three memory settings, 8-speaker 10-stack CD audio system and HSV Coupé alloy sill panels. HSV GT0 Coupé is available with your choice of "Quick-shift" close-ratio 6-speed manual or HSV-calibrated 4-speed automatic transmission.







# HSV Coupé Inner beauty

Colour-keyed leather and Lismore interiors feature a unique HRT-style race suit theme. Available on GTO or GTS in Red, Yellow or Tan



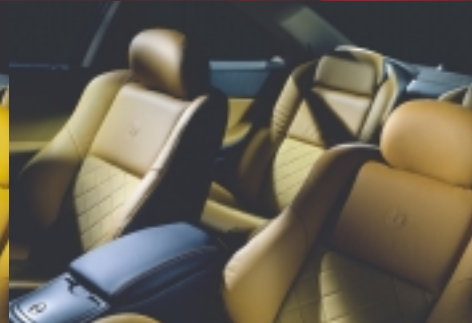
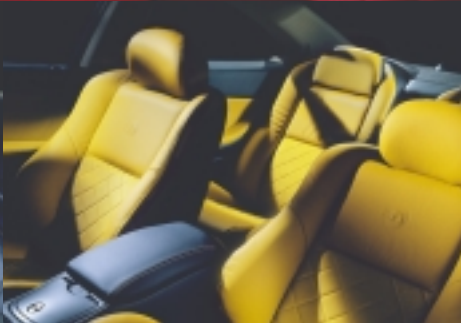
GTO Coupé



GTS Coupé



Optional extra HSV Satellite Navigation shown



GTO Coupé features specific HSV instrumentation accented by 'Onyx Black' cluster surround.

GTS Coupé features specific HSV instrumentation accented by exclusive 'Grey Metal' cluster surround and steering wheel highlights. GTS Coupé also features a unique gear change light and buzzer.

## Owner's Own



## The smartest way to buy your HSV Coupé



On delivery of a new HSV Coupé, owners also receive an exclusive HSV aluminum briefcase which contains: the HSV centre console owner's compartment contents, including quality tyre gauge, Maglite torch, wheel-nut cap remover and multi-purpose penknife, plus Meguiar's HSV car care kit, a copy of Excelerate, the official HSV magazine, HSV Compendium with build certificate and vehicle details, and an exclusive 'I just got one' owner's cap.



Holden Financial Services offers an extensive range of options designed to assist you in owning a new HSV more affordably. The SmartChoices range of vehicle finance allows you to select the terms, conditions and pricing structure to best suit your lifestyle. SmartBuy offers affordable, flexible finance with low monthly repayments<sup>1</sup> and the security of a guaranteed minimum buyback price.<sup>2</sup> For more information and a detailed brochure see your local HSV Retailer or freecall the **SmartBuy Hotline on 1800 060 094.**

The SmartCare range of competitively priced insurance products provide tailor-made protection to suit your specific financial needs. The HSV SmartCare Comprehensive Policy even offers new car replacement, agreed value, genuine Holden/HSV approved parts guarantee and a range of additional premium benefits.<sup>3</sup> For more information and a detailed brochure see your local HSV Retailer or free call the **HSV SmartCare Hotline on 1800 060 094.**

SmartDrive offers you competitive small business lease options, with flexible terms, payment and maintenance options normally enjoyed only by large fleet buyers. That's smart! For more information and a detailed brochure see your local HSV Retailer or freecall the **HSV SmartBuy hotline on 1800 060 094.**

HSV fleet buyers enjoy access to HNL Fleet Services<sup>4</sup> which offers a wide range of fleet leasing, management and financial services to approved customers. Consult your HSV Retailer or HNL Fleet Services direct, toll-free on 1800 226 772.

Each purchaser of a new HSV Coupé will have the choice of one of the above gifts at no cost as a part of our "Owner's Own" programme.

### The Holden MasterCard.

Simply by putting your everyday expenses like bills and shopping on it you'll be saving towards your next new Holden or HSV.

5% of every dollar you spend on the new Holden MasterCard can be used as savings towards your new car. Savings from Holden on top of the best deal you can negotiate with your Retailer. Just through your everyday spending you could save up to \$3000 Holden Rebate plus any earned Bonus Partner rebate.<sup>5</sup>

The Holden MasterCard offers no annual fee in the first year, and a competitive interest rate with up to 45 days interest free on credit card purchases.<sup>6</sup> Cardholders also enjoy special privileges such as free entry into selected Golf events and Motor Shows. They can even transfer rebate to a family member.<sup>5</sup>

To apply, visit any Westpac/Challenge Bank/Bank of Melbourne branch, your HSV Retailer, or call the Holden MasterCard 24 hour Customer Service Line on 1300 650 696.

### The package wouldn't be complete without extra peace of mind.

We're with you all the way. HSV drivers are backed by the most comprehensive customer care package on the road. With over 60 specialist Retailers and 900 Roadside Assistance centres nationwide, few other luxury-performance cars in Australia or New Zealand are supported with the level of customer care offered to HSV owners.

### 3 year or 100,000km New Vehicle Warranty.

Every HSV comes with a 3 year or 100,000km New Vehicle Warranty,<sup>8</sup> whichever comes first. This factory-backed bumper-to-bumper warranty covers everything including the engine, transmission, clutch, interior and exterior components. An extended New Vehicle Warranty is also able to be purchased. For more details, contact your HSV Retailer.

### 3 year/24 hour Roadside Assistance.

Go anywhere, anytime, with complete confidence. HSV Roadside Assistance, one of Australia's most comprehensive assistance packages, is complimentary for 3 years or

100,000km, whichever comes first.<sup>7</sup> In the event of the unexpected happening, from your keys being locked in the car to needing mechanical and accident advice, you can get in touch with our 24-hour Hotline, 365 days of the year, by calling the toll-free number 1800 817 100.

HSV owners receive the added benefits of Ultra Roadside Assist which includes accommodation, alternative transport, rental car, assistance in case of accident, theft and medical emergency and Australia-wide vehicle recovery. This service is delivered by Assist Australia and the combined resources of the Australian motoring organisations.

### A decidedly different level of service.

Retailer support when you need it, where you need it. With Retailers strategically located nationwide, the Holden and HSV Service Network is the largest in the country. Our service centres are staffed by a team of professional technicians who have access to regular factory training, bringing them up to speed on the latest technology.

If you want to know more about the extensive benefits of HSV ownership, contact Holden Customer Assistance on 1800 033 349, Monday – Friday, 8am – 6pm EST or visit [www.hsv.com.au](http://www.hsv.com.au)



1. Fees and charges apply. For the annual percentage rate applicable to you contact your local Holden Dealer. 2. Conditions apply. A disposal fee of \$385 (inc'l GST) applies plus charges for excess wear and tear or excess kilometres may also apply. 3. Refer to the policy wording for specific terms, conditions and exclusions. 4. Earnings and redemption of rebate is subject to the Holden MasterCard Rebate Program Rules, terms and conditions apply. See your HSV retailer for further information. A maximum of \$3,000 in the form of Holden MasterCard 'core' rebate (plus any additional 'bonus' rebate accumulated via the partner program) accrued over a maximum of 5 years may be applied per eligible vehicle purchased. Vehicle sales for which a fleet allowance is paid are not eligible for Holden MasterCard rebate. 5. The interest-free period applies where the card account is fully paid by the due date each month. 6. New vehicle warranty. Refer to your owner's handbook or see your Holden Dealer for full terms and conditions. 7. Roadside Assistance may not be available in some rural areas. Refer to your Holden Roadside Assistance booklet or see your Holden Dealer for terms and conditions.



A special car deserves a unique apparel range. Clothes that reveal, in a stylish and understated way, that the HSV Coupé owner is part of a rare breed indeed. See your HSV Retailer for details. Or, of course, see the new range on our website at [www.hsv.com.au](http://www.hsv.com.au).



# HSV Coupé Specifications



Devil Yellow ▲



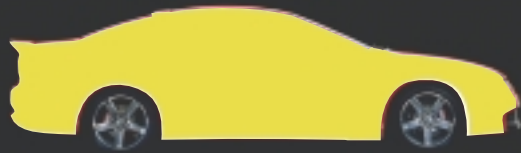
Phantom ▲ ■ ●



Quicksilver ■ ●



HSV Racing Green ●



Sting Red ■ ●

Note- optional coloured trim selections. ▲ Yellow ■ Red ● Tan

ENGINE	GTO	GTS
255kW @ 5600 rpm/475Nm @ 4000 rpm (PULP)	●	—
300kW @ 6,000 rpm/510Nm @ 4,800 rpm (PULP)	—	●
HSV 5.7 litre LS1 V8 engine, aluminum block and heads, cast-iron cylinder bores	●	●
Knock sensors enable engine to run on ULP	●	●
Sequential multi-point port fuel injection, cast steel roller rocker arms, roller cam followers, eight coil pack ignition, cross-bolted five main bearings 6 bolts per bearing cap	●	●
HSV LS1 sports engine calibration for extra mid-range power and torque	●	●
HSV ram air type cold air intake	●	●
HSV stainless steel exhaust extractors	●	●
HSV high capacity, low back pressure 1.8 litre catalytic converters	●	●
HSV intermediate mufflers	●	●
HSV big bore 57 mm dual exhaust system	●	●
HSV low back pressure, high volume rear muffler with tuned exhaust note	●	●
HSV high volume Sports twin exhaust outlet	●	—
HSV high volume Double D exhaust outlet	—	●
HSV engine cover identification	●	●
<b>TRANSMISSION AND FINAL DRIVE</b>		
Quick-Shift T56 six-speed manual specific to LS1, hydraulic clutch	●	●
Available Turbo Hydra-Matic 4L60-E 4-speed electronic automatic transmission	●	—
Traction Control	●	●
HSV limited slip differential	●	●
HSV Hydra-trak rear differential	—	●
HSV Sports final drive ratio 3.73:1 (manual only)	●	—
HSV GTS final drive ratio 3.91:1 (manual only)	—	●
Final drive ratio: 3.07:1 (auto only)	●	—
HSV gear shift light and buzzer	—	●
<b>STEERING AND SUSPENSION</b>		
Rack and pinion with power assistance with unique HSV steering rack	●	●
Fully independent rear suspension with multi-link	●	●
HSV Touring 2 co-ordinated suspension components	●	—
HSV Premium co-ordinated suspension components	—	●
HSV 28mm front anti-roll bar, 15mm rear anti-roll bar	●	●
<b>BRAKES</b>		
Performance brake system with 330 x 32mm ventilated front discs with HSV embossed front calipers, 315 x 18mm ventilated rear discs, grooved front & rear rotors	●	—
HSV (AP Racing) 6-piston brake system with 362mm ventilated front discs with HSV embossed front & rear calipers, 4-piston 343mm ventilated rear discs, grooved & cross drilled front & rear rotors	—	●
ABS anti-lock brakes	●	●
<b>WHEELS AND TYRES</b>		
HSV GTO 5-spoke 18 X 8 inch alloy wheels	●	—
HSV specification premium Bridgestone 235/40 ZR18 S03 directional tyres	●	—
HSV GTS 5-spoke 19 X 8 inch alloy wheels in Chrome shadow	—	●
HSV specification premium Pirelli P-Zero 245/35 ZR19 tyres	—	●
HSV Coupé specific space saver spare wheel/tyre	●	●
<b>EXTERIOR</b>		
3 element projector headlights	●	●
HSV Coupé fully-integrated exterior styling	●	●
HSV Coupé sports grille and wide lower air intake	●	●
HSV Coupé contrasting colour accents front, side and rear	—	●
HSV Coupé side skirts with 'Shark Gills'	●	●
HSV Coupé rear bootlid 3 piece spoiler with integrated stop lamp	●	●
HSV Coupé unique roof spoiler	●	●
HSV Coupé front fog lamps	●	●

INTERIOR	GTO	GTS
HSV Coupé Black contoured Sports seats in race suit Lismore/leather	●	—
HSV Coupé 'Bridge of Weir' Black/Silver Chainmail leather Sports seats	—	●
HSV Coupé 'Onyx Black' dash surround	●	—
HSV Coupé 'Grey Metal' dash surround	—	●
8-way electric adjustable driver and passenger seats with three memory settings	●	●
HSV driver and passenger lumbar support	●	●
HSV-embossed steering wheel centre, leather-bound steering wheel with embossed pattern sections, steering wheel mounted audio controls and height and reach adjustment	●	—
HSV-embossed steering wheel centre, leather-bound steering wheel with embossed pattern sections, steering wheel mounted audio controls and height and reach adjustment with 'Grey Metal' finish	—	●
HSV Satin interior door handles and Coupé sill panels	●	●
HSV leather-trimmed automatic and manual shift grip (GTS manual only)	●	●
HSV centre console owner's compartment with quality tyre gauge, Maglite torch, wheel-nut cap remover and multi-purpose pen knife	●	●
HSV fully-lined luggage compartment with luggage net	●	●
HSV rear integrated dual cup holders	●	●
HSV floor mats	●	●
HSV fire extinguisher	●	●
HSV high contrast Mariner blue instrument cluster with HSV 250 km/h speedometer	●	●
HSV 8-speaker sound system including 10-stack CD player, tuner, cassette and electric aerial automatic retract	●	●
HSV-embossed remote key-pad central locking system	●	●
<b>MAIN FEATURES</b>		
Driver and Passenger airbags	●	●
Side impact airbags	●	●
Front seat belt pre-tensioners	●	●
Dual zone automatic climate control air-conditioning	●	●
Body colour exterior mirrors with electric remote adjustment	●	●
Electric windows	●	●
Remote central locking and boot release	●	●
Two-stage unlocking with driver's door only and passenger door functions	●	●
12-function trip computer	●	●
Cruise control	●	●
Twilight Sentinel with headlamps automatic switch-off	●	●
Battery saver with timed automatic accessory shutdown	●	●
HSV Rear Proximity Sensors	—	●
HSV DNA and third generation 'ESS' (Embedded Security System) and immobiliser	●	●
HSV bonnet medallion	●	●
HSV 255 identification under side repeater lamp	●	—
HSV 300 identification under side repeater lamp	—	●
HSV 'Coupé and HSV' badgework on rear decor	●	●
HSV Coupé black over gold Build Plate, engraved with individual build number	●	●
<b>OPTIONS</b> (Available at extra cost)		
HSV Coupé contoured Sports seats in race suit Lismore/leather in Red, Yellow or Tan	●	●
HSV Performance suspension (standard on GTS)	●	—
HSV Cross-Drilled Premium brakes	●	—
HSV Satellite Navigation	●	●
Holden Assist	●	●
<b>HSV APPROVED ACCESSORIES</b> (Available at extra cost)		
HSV Coupé headlight protectors	●	●
HSV Coupé bonnet protector	●	●

A word about this catalogue. We have tried to make this catalogue as comprehensive and factually accurate as possible. However, since the time of printing some of the information you'll find here may have been updated. Also, some of the equipment shown or described through this catalogue may have been changed and/or is available at an extra cost. Further, Holden Ltd. & HSV reserves the right to make changes at any time without notice, in prices, colours, materials, equipment and models. Your HSV Retailer has details, and before ordering, you should ask them to bring you up to date. No HSV Retailer or other person is authorised or permitted to give or make any statement, assertion or undertaking in relation to the quality, performance characteristics, descriptions or fitness for any purpose of any Holden or HSV product which is at variance with any written statement, assertion or undertaking on any of these subjects given or made by Holden Ltd. A.B.N. 84 006 893 232 or General Motors-Holden's Sales Pty. Ltd. A.B.N. 80 004 688 831 in its published sales literature, and neither company accepts any liability for any such unauthorised action. Holden Ltd., General Motors-Holden's Sales Pty. Ltd. and HSV have authorised dealers in many parts of Australia for the sale of service parts and the provision of service to owners of HSV's products. All reasonable endeavours are made to ensure that such dealers carry adequate stocks of service parts, but neither HSV, Holden Ltd. nor General Motors-Holden's Sales Pty. Ltd. statement assurance other than that contained in the New Vehicle Warranty given by Holden Ltd. and HSV that such parts or service facilities will be available at any specific location or at any particular time. Express warranties offered for Holden and HSV products are subject to the conditions set out in all vehicle handbooks. Details also available from Holden and HSV on request. Copyright Holden Ltd. Printed Nov 2001. Part No. 00A-021104.



All HSVs are exhaustively tested at Holden's famous Lang Lang proving grounds.

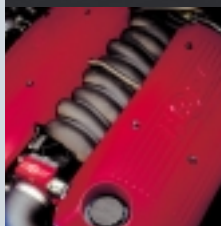


HSV DNA is ground breaking technology developed by DataDots. The size of a grain of sand and invisible to the naked eye, HSV DNA is applied to various components of the vehicle and each of these tiny grains features the specific VIN (Vehicle Identification Number) of your HSV. We are the first Australian manufacturer to adopt this world-class security system. HSV DNA will enable enforcement authorities to identify individual HSVs and their components. HSV DNA can not be removed without detection, making theft a pointless exercise.





The first HSV Coupé ever is highlighted by a totally integrated central styling theme, that features a unique 3-piece rear spoiler and trademark roof spoiler.



## The HSV GTS Coupé

### The Ultimate HSV.

300kW of Callaway-enhanced 5.7 litre V8, 510Nm of torque, a close-ratio 6-speed manual only gearbox with shift light and buzzer - in a word awesome.

Exclusive HSV 6-piston front and 4-piston rear calipers, Grooved and Cross-Drilled 362mm front and 343mm rear discs, developed in conjunction with AP Racing (of HRT fame) - unmatched stopping power.

19 inch 5-spoke alloy wheels with Pirelli P-Zero tyres and HSV Multi-link Performance suspension with Hydra-trak differential - enough said.

Highly distinctive styling with contrasting accents, Bosch rear proximity sensors, Double-D exhaust outlet, the perfect expression of everything that is HSV.

Any way you cut it, you'll just want one.

HSV GTS Coupé features a specially-selected hand-cut 'Chainmail' leather interior, imported from Scotland's 'Bridge of Weir' - leather suppliers to Aston Martin and other premium high-performance luxury marques.

