



HOLDEN
DRIVE ON

holden.com.au

CALAIS / BERLINA





Expect more. Holden Calais and Holden Berlina are unique statements in style and performance, both built from the same singular passion for refining the driving experience.





Holden Berlina delivers all you expect and more.

There's no need to compromise your standards when you have a car that raises expectations, then exceeds them.

3.8 LITRE V6 ENGINE, for high torque and powerful launch. Or optional 225kW 5.7 litre Generation III Alloy V8 for both performance and luxury. CONTROL-LINK INDEPENDENT REAR SUSPENSION. Dual control arms bring precise rear wheel tracking, and extra traction to hold the tail in check on corners. OPTIONAL LEATHER INTERIOR. In choice of traditional Shale, or sporting Anthracite black. CLIMATE CONTROL. Responds quickly to changes in conditions outside, including detecting direct sunshine after cloud. Manual override ensures driver-specific settings are available. PROJECTOR HEADLAMPS. Provide wide and even beam pattern. Automatically switch on at twilight.

B E R L I N A

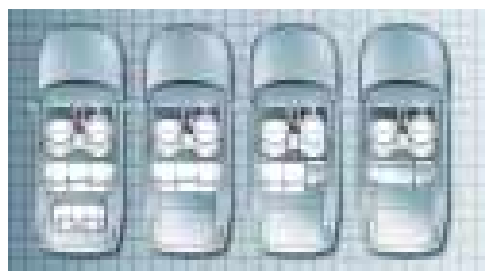


BERLINA WAGON



Berlina wagon is designed for people who expect those extra touches of luxury, but still need practicality. This wagon seamlessly combines those desires with superior road holding capabilities.

TRIP COMPUTER with comprehensive trip history and trip planning features, including a countdown of distance and time to go, and fuel remaining. 60/40 SPLIT FOLD REAR SEAT for a range of configurations to split various passenger and payload combinations. CARGO BLIND. Retracting roller blind pulls out to do double duty: keep the cargo out of direct sun, and out of sight. REMOTE TAILGATE UNLOCK ON APPROACH. Especially useful when you have an armful of shopping.



CALAIS

Holden Calais demands to be driven. With a Supercharged V6, it's a luxury car which reflects your passion to succeed.

171KW SUPERCHARGED V6

seamlessly unspools power and torque through the rev range. Optional 225kW 5.7 litre Generation III Alloy V8 offers effortless performance to master any road. MULTI FUNCTION DISPLAY in instrument panel ahead of driver, close to eye level, features audio system status, gear selected and multi function trip computer. 16 INCH ALLOY WHEELS. Sophisticated new styling over a strong, wide wheel to handle supercharged power and a spirited driver. REAR PARK ASSIST. Removes guesswork in reverse. The kind of innovation that Calais drivers have come to expect. FOG LAMPS add style year-round, and vision when bad weather closes in.

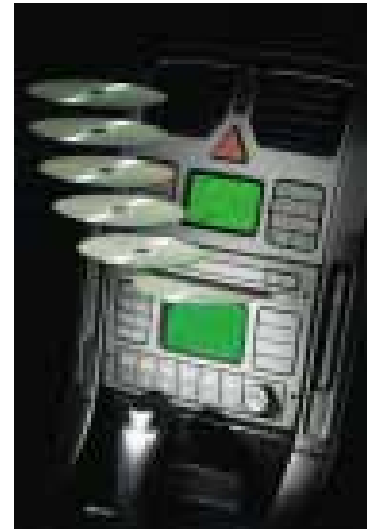




Take control. Expect an instant response. The new, driver-oriented instrument panel and interior features are totally integrated around the driver's every whim.

LEATHER WRAPPED wheel, gearshift and handbrake lever provide good grip and a touch of luxury. DUAL ZONE CLIMATE CONTROL. Driver and front passenger enjoy their preferred temperature. 8-WAY ELECTRIC DRIVER'S SEAT. Find your ideal driving position at a touch. 6 DISC IN-DASH CD. Plays pure CD sound through 10 speaker elements, including subwoofers. OPTIONAL COLOURED LEATHER. Creates an exciting new look for Calais that stands out from the crowd.

CALAIS





CALAIS / BERLINA SAFETY

Expect the unexpected. Calais and Berlina have been engineered to respond instantly, providing an unparalleled feeling of confidence and control.

CONTROL-LINK INDEPENDENT REAR SUSPENSION.

Dual control arms help keep your car precisely on track over bumps and during strong acceleration, deceleration or braking. Particularly valuable in challenging cornering situations. ANTI-LOCK BRAKING SYSTEM (ABS). Sensors adjust brake pressure in rapid pulses for maximum adhesion before the point of lock-up. Keeps the front wheels steering and rear wheels on track.

PYROTECHNIC FRONT SEAT BELT PRE-TENSIONERS.

Triggered by the airbag sensor in frontal collisions of moderate severity, pre-tensioners minimise unwanted forward movement. In more severe frontal accidents,

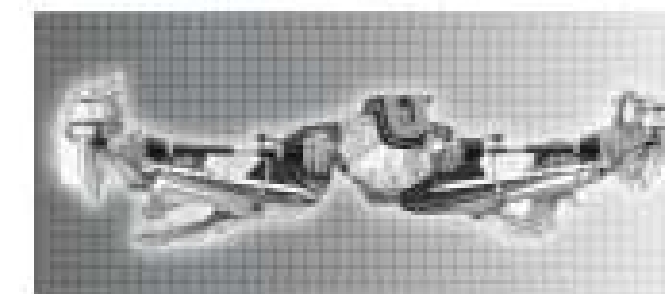
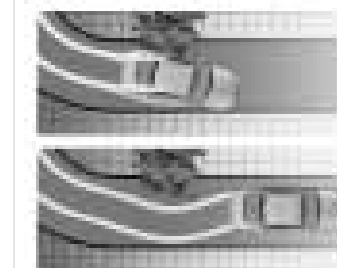
airbags will also be activated. DRIVER & FRONT PASSENGER

SIDE IMPACT AIRBAGS. Helps protect the head, neck and chest from injury in a side collision, after a rapid 25-millisecond detection and inflation sequence.¹ DUAL FRONT

AIRBAGS. Feature full-size driver and passenger Supplement Restraint System (SRS) airbag for maximum protection in near-frontal impacts. Low-pressure inflator to help prevent injury from airbag inflation.² TRACTION CONTROL. For stable

acceleration on difficult road surfaces. Limits power to driving wheels, if required, to maintain grip. If traction fails on one wheel, for example on a gravel shoulder, braking is

applied to direct the power to the wheel with better traction.



1. Side impact airbags will only inflate if car is struck hard in severe side collision. 2. Front airbags will only inflate if car is struck hard in severe frontal collision. Airbags form part of the Supplemental Restraint System (SRS) as they assist, but do not replace safety offered by seatbelts.

CALAIS / BERLINA SECURITY



Could peace of mind be the ultimate luxury? Both Calais and Berlina boast a host of intelligent security features designed to help you feel relaxed, even when you're not driving.

PRESET HEADLAMP TIME DELAY.

Lock-up and leave, with headlamps on to help light a path to your door. PRIORITY KEY - Operates exterior lamps on approach to show location and environment of your car - Allows selective entry through driver's door only, to help prevent an intruder entering elsewhere - Remotely operates door deadlocks, immobiliser and alarm; holds the memory setting for your own pre-set time delay on headlamps, and sets the car up for safe, comfortable driving including speed alert, climate control, and sound system.

Holden Assist is Australia's most advanced satellite car monitoring system. And it's optional on Berlina and Calais. An interactive primary security system, it uses satellite and Global Systems for Mobile communications (GSM) technology to link your car with Holden Assist and the National Emergency Response Centre. It does more than offer roadside assistance. Holden Assist provides on-board assistance 24 hours a day, 365 days a year.*

IF YOU LOCK YOUR KEYS IN YOUR

CAR. Once your identity has been validated, Holden Assist can send a signal to unlock your car remotely. IF YOUR BATTERY IS LOW. The system will detect it and Holden Assist will attempt to contact you. IN AN EMERGENCY. Press the red SOS button. Staff will attempt to make voice contact, locate your position and contact emergency services if needed. IN THE EVENT OF A CRASH. If an airbag is deployed, or the seatbelt pre-tensioners activated, an operator will attempt to



make voice contact with the occupants. If there is no response, or if requested, emergency services will be notified. IF SOMEONE TRIES TO GAIN UNAUTHORISED ENTRY. Holden Assist is alerted, the engine is disabled and an operator will establish voice contact. The Police will be alerted if the person in the car is unable to be identified as the owner. IF YOU NEED ROADSIDE SERVICE. Holden Assist connects you directly to Holden Roadside Assist, one of the most comprehensive roadside assurance packages available in Australia.



*Holden Assist service is dependant on the availability and functionality of GSM network and GPS system.

CALAIS / BERLINA ENGINES

Calais and Berlina give you the luxury of power. And the luxury of choice, between the ECOTEC V6, the sophisticated Supercharged V6, or the Generation III Alloy V8.



V8

- 225kW of power, 460Nm of torque
- Aluminium alloy construction creates light weight engine for - Smooth ride. Lower weight allows softer, more supple front suspension - Agile handling. Less weight in front end allows more precise steering response
- One piece induction system made from composite materials for smoother airflow and superior 'breathing'
- Inlet manifold has improved airflow for performance and fuel economy.



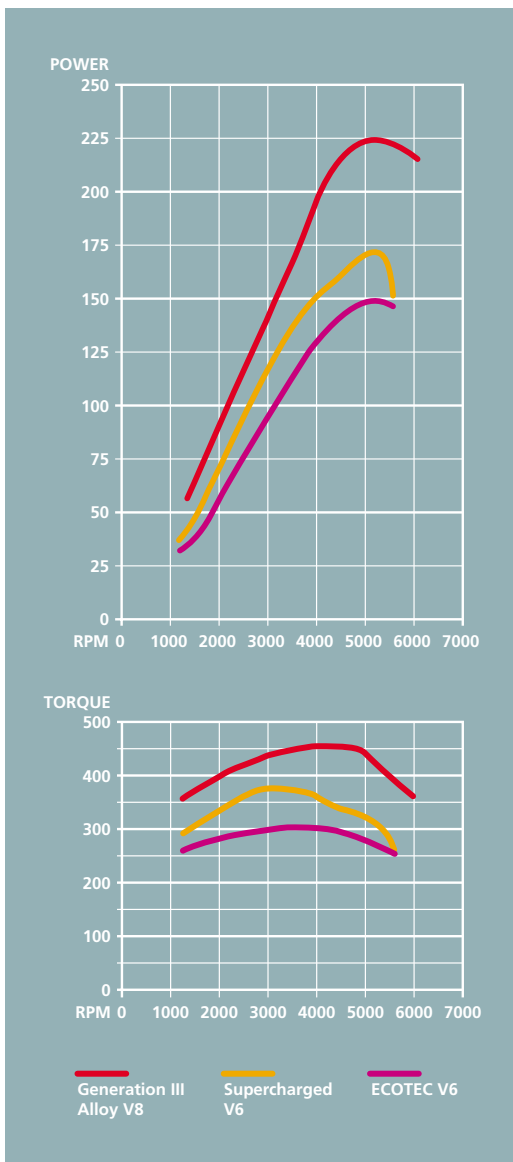
SUPERCHARGED

- 171kW of power, 375Nm of torque
- Outstanding 6-cylinder performance from elite technology, shared with Aston Martin, Mercedes and Jaguar
- Eaton M90 Supercharger is a crankshaft driven air pump that compresses more air into the cylinders than a naturally aspirated engine
- More air, and more fuel, increase power. Like a bigger engine
- Vacuum operated boost control modulates air pressure to give smooth, progressive power
- Substantial torque across rev range makes engine responsive and easy to drive.



V6

- 152kW of power, 305Nm of torque
- V6 engine is compact and light, for excellent ride and handling
- High power with outstanding fuel efficiency from use of - Friction reduction techniques on moving parts, especially pistons, rings and valve train - Fast, powerful new engine management for individual cylinder spark control, to improve performance, driveability and economy
- Die cast inlet manifold smoother for improved airflow to increase power
- Stainless steel long life exhaust.



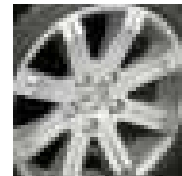
HOLDEN BY DESIGN



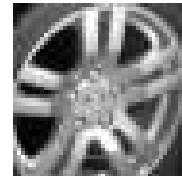
16" 'S' Series



17" 'H' Series



17" 'X' Series



17" 'Y' Series



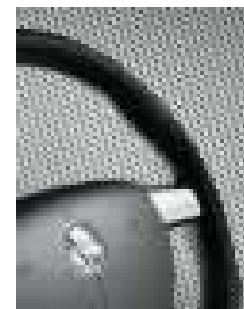
18" 'J' Series



Type 2 Sportswing



Type 1 Sportswing



Your car is an extension of your personality. Holden By Design has a range of factory fitted, personalised enhancements which lets you show how individual you are.

Features.

	SEDAN		WAGON
	BERLINA	CALAIS	BERLINA
POWERTRAIN			
152kW, 3.8 litre ECOTEC V6 engine.	S	O	S
171kW, 3.8 litre Supercharged V6 engine.		S	
225kW, 5.7 litre Generation III alloy V8 engine.	O		O
Dual fuel: petrol/LPG. (Avail. with ECOTEC V6. Not avail. with FE2 Sports Suspension.)	H/A	H/A	
Electronic control 4-speed automatic transmission. Power or economy mode.	S	S	S
Limited slip differential (mandatory option with V8 engine)	P	P	P
MECHANICAL			
Control-Link Independent Rear Suspension.	S	S	S
FE2 Sports Suspension. (Inc. gas pressure rear dampers.)	H/O	H/O	H
Anti-lock Braking System (ABS).	S	S	S
Traction Control (TC). Off switch.	S	S	S
WHEELS			
16" x 7" alloy wheels. 215/60 R16 95V tyres.	S		S
16" x 7" alloy wheels. 225/55 R16 95V tyres.		S	
16" x 7.5" 'S' series multi-spoke alloy wheels. 225/55 R16 95V tyres.	H	H	H
17" x 8" 'Y' series multi-spoke alloy wheels. 235/45 R17 93V tyres.	H	H	H
17" x 8" 'X' series eight-spoke alloy wheels. 235/45 V-rated tyres.	H	H	H
17" x 8" 'H' series multi-spoke alloy wheels. 235/45 V-rated tyres.	H	H	H
18" x 8" 'J' series multi-spoke alloy wheels. 235/40 R18 tyres. (Only available with FE2 Sports Suspension.)	H	H	
EXTERIOR			
Chrome grille header.		S	
Bumpers in body colour.	S	S	S
Projector-type headlamps.	S	S	S
Front foglamps.		S	
Headlamp guards.	A	A	A
Bonnet protector.	A	A	A
Mudflaps (moulded).	A	A	A
Metallic paint.	S	S	S
Exterior mirrors in body colour.	S	S	S
Chrome window surrounds.	S	S	

	SEDAN		WAGON
	BERLINA	CALAIS	BERLINA
Body kit: Holden By Design front bumper/skirt. Side & rear skirts.	H	H	H
Holden By Design Type 1 Sports wing.	H	H	
Holden By Design Type 2 Sports wing.	H	H	
Tailgate dust deflector.			S
Chromed exhaust outlet.	S	S	S
Licence plate frames, standard height or slimline.	A	A	A
Full immersion body corrosion protection.	S	S	S
Full stainless steel long life exhaust system.	S	S	S
DRIVER			
Steering wheel height & reach adjust.	S	S	S
Leather-wrap wheel.	H	S	H
- Sports profile.	H	H	H
Leather & chrome on gear shift & handbrake levers.	H	S	H
Cruise control.	S	S	S
Electric remote boot release.	S	S	
Electric remote tailgate lock/unlock.			S
Electric remote control exterior mirrors.	S	S	S
Variable intermittent, road speed sensitive wipers.	S	S	S
Remote fuel filler door release.	S	S	S
Rear window wiper/washer.			S
- Intermittent switches up to normal speed when reverse gear selected.			S
Electric rear window demist. Auto off timer.	S	S	S
Rear Park Assist.	O	S	
Twilight sentinel.	S	S	S
Headlamps auto off after leaving parked car.	S	S	S
Trip computer, including: • Average speed. Odometer. Average economy on trip. • Elapsed trip time. Trip distance. Fuel used on trip. • Audible & visual speed warning (4 adjustable settings). Distance to empty. Instant economy. • Trip distance to go. Time to go. Remaining fuel. Stop watch.			S
Service reminder. Appears 1,000km before service is due.	S	S	S
Satellite navigation. (Global Positioning System.)	H	H	
Auto transmission "gear selected" indicator in multi function display.	S	S	S

	SEDAN		WAGON
	BERLINA	CALAIS	BERLINA
Tachometer.	S	S	S
-Rear lamp failure.		S	
Lamp & chime warning: Parking brake on while vehicle moving.	S	S	S
- Low fuel.	S	S	S
Variable instrument dimming control.	S	S	S
Mobile phone power socket in console.	S	S	S
Mobile phone holder.	A	A	A
SOUND SYSTEM			
Blaupunkt AM/FM stereo electronic tune radio. Local/distant selector switch. Automatic station store memory.	S	S	S
Sound system remote controls on steering wheel.	S	S	S
Radio display repeats in multi function display.	S	S	S
Speed dependent volume control.	S	S	S
Compact disc in-dash changer (6 disc).	S	S	S
5 preset graphic equaliser - vox, pop (with beat function).	S	S	S
Six speakers. Total 80 watts.	S		S
10 speaker elements, including subwoofers. Total 260 watts.		S	
Power antenna, fully automatic. Driver adjustable pre-setting for height. Auto retract with remote control Power or Priority Key.	S	S	S
Rear window 'diversity' FM antenna.	S		
SEATING			
Seat trim in woven velour.	S	S	S
Seat & upper door trim in leather.	O		O
Seat & upper door trim in coloured leather.		O	
Bucket seats. High rise centre console armrest.	S		S
Bucket seats with high rise padded leather console armrest.		S	
Padded front seat head restraints. Height & tilt adjust.	S	S	S
Electric driver's seat height adjust. Includes front & rear cushion tilt.	S		S
8-way electric adjustment of front seats: Slide forward/back. Cushion tilt. Height. Recline.		S	
Driver & front passenger seat adjustable lumbar support.	S	S	S
Driver's left foot rest, adjustable.	S	S	S

	SEDAN		WAGON
	BERLINA	CALAIS	BERLINA
Driver & front passenger airbag (full size).	S	S	S
Strengthened upper B pillar to reduce side impact velocity to head, neck & chest.	S	S	S
Driver & front passenger side impact airbag.	S	S	S
Front lap/sash seat belts have webbing clamps & pyrotechnic pre-tensioners. Buckle mounted to seat for consistent fit when seat moved forward or back.	S	S	S
Concealed front & rear window-seat belt sash guides protect head with cover over belt anchor mechanism.	S	S	S
Front seat belt sash height adjust.	S	S	S
Anti-submarining ramps in seats reduce risk of sliding under seat belt in a collision.	S	S	S
All seat belts retracting lap/sash.	S	S	S
Folding 3rd row 'Plus 2' child seat. (Not avail. with LPG fitted.)			A
Rear seat centre fold-away tray.	S	S	
- Centre armrest.	S	S	S
Two rear seat bolster head restraints.	S		
Two height adjustable rear seat head restraints.		S	S
Rear seat child restraint anchor points.	S	S	S
Childproof rear door locks.	S	S	S
Rear power window override switch.	S	S	S
CABIN COMFORT			
Climate control. Auto/manual mode. Rear outlet vents.	S		S
Dual temperature zone climate control: driver & front passenger.		S	
Priority Key for 2 people automatically restores when unlocking car, settings for: Climate control. Sound system. Trip computer. Speed alert. Transmission power/economy mode. Instrument dimmer. Antenna height. Headlamps-off time delay.		S	
Power windows, front & rear. Express down driver's and front passenger windows. Remain powered on time delay after engine switched off.	S	S	S
Electric sunroof. Auto close when vehicle immobilised.	H	H	H
Alloy pedal cluster.	H	H	H
Satin chrome interior door handles.	H	H	H

	SEDAN		WAGON
	BERLINA	CALAIS	BERLINA
Stainless steel sill plates.	H	H	H
Vanity mirror, driver & passenger side.	S		S
Vanity mirror, driver & passenger side, illuminated, with cover.		S	
Interior lighting, time delay on entry. Automatic illumination when ignition is turned off. Auto off after 1 hour.	S	S	S
Courtesy lamps on front & rear doors.		S	
Footwell lamps, front.	S	S	S
Front reading spotlamps.	S	S	S
Rear reading lamps.	S	S	S
Plush cut pile carpet.		S	
Rubber floor mats.	A	A	A
Carpeted floor mats, tailored.	A	A	A
Passenger overhead assist handles, folding, front & rear.	S	S	S
Aero windscreen sunshade, front.	A	A	A
Weathershield, in standard width or slimline, driver & front passenger window.	A	A	A
Shadeband across top of rear windscreen.	S	S	
Rear sunguard.	A	A	
STORAGE, CARGO			
Twin foldout cup holders in instrument panel.	S	S	S
Twin cup holders in centre console & rear seat centre fold-away tray.	S	S	
Garage remote holder.	A	A	A
Sunglasses holder.	S	S	S
Mobile phone concealed storage compartment.		S	
Centre console compartment, with liner.	S	S	S
Front door storage bins.	S	S	S
Storage pocket rear of driver & passenger seat.	S	S	S
Fold-down rear seat centre 'ski' hatch for long loads.	S	S	
60/40 split fold rear seatback.			S
Cargo area storage locker for small items.			S
Cargo safety barrier.			H/A
Carpeted cargo area.			S
Carpeted boot floor & spare wheel cover.	S	S	
Luggage net (adjustable) in boot to keep small items in place.		S	

	SEDAN		WAGON
	BERLINA	CALAIS	BERLINA
Aero style roof carry bars.	A	A	S
Towing equipment (see specifications). Superlift shock absorbers.	A	A	A
SECURITY			
Remote control Power Key.	S		S
Priority Key.		S	
- Operates interior lighting.	S	S	S
- Operates exterior lamps, to show location of car at night.	S	S	S
- Engages door deadlocks when pressed twice.	S	S	S
- Releases deadlocks.	S	S	S
- Operates central locking for keyless entry through driver's door only.	S	S	S
- Operates all doors when button kept pressed.	S	S	S
- Enables/disables alarm system.	S	S	S
- Opens boot.	S	S	
- Disables remote boot release button in glovebox (when locking).	S	S	
- Unlocks/locks tailgate.			S
Key has rolling security code.	S	S	S
Horn chirps if door is ajar when remote locking.	S	S	S
Flashing red interior warning lamp shows vehicle is protected.	S	S	S
Engine disabled to immobilise vehicle when key removed from ignition. Unique code for each vehicle.	S	S	S
Doorlock in driver's door only. Lock cylinder 'freewheels' if anything other than correct key is inserted.	S	S	S
Slip-type steering lock. If steering wheel is forced, front wheels will not turn.	S	S	S
Retracting roller cargo blind.			S
Sound system security electronics using PIN.	S	S	S
Headlamps auto off: programmable time delay.	S	S	S
ROAD SAFETY			
Emergency mode after seat belt pre-tensioners are triggered. On-board computer turns engine & fuel pump off. Unlocks doors. Turns dome lamp on.	S	S	S
Warning triangle for roadway.	A	A	A
First aid kit.	A	A	A
Holden Assist (not avail. with LPG, only avail. with side impact airbags).	O	O	

Specifications.

	ECOTEC 3.8 LITRE V6	SUPERCHARGED 3.8 LITRE V6	225KW 5.7 LITRE GEN III V8
ENGINE	"V" configuration. Cold air intake. OHV design with cross flow cylinder heads. Sequential fuel injection. High energy, distributorless, ignition. Twin knock control sensors. Computer diagnostics. Electric cooling fan. Stainless steel exhaust.		
		Electronic control supercharger.	Aluminium alloy block & cylinder heads.
		High flow air cleaner. Low restriction dual exhaust.	
	Triple coils.		Coil-per-cylinder.
BORE x STROKE(mm)	97 x 86		99 x 92
CAPACITY(cc)	3791		5665
COMPRESSION RATIO (:1)	9.4	8.5	10.1
POWER (ECE, kW)	152 @ 5200rpm	171 @ 5200rpm (PULP)	225 @ 5200rpm
TORQUE (ECE, Nm)	305 @ 3600rpm	375 @ 3000rpm (PULP)	460 @ 4400rpm
GEAR RATIOS	1st 3.06	2nd 1.63	3rd 1.00
DRIVE	Rear Ratio 3.08:1		
RECOMMENDED PETROL OCTANE RATING	91 (ULP)	95 (PULP) Alternative:91 (ULP)	91 (ULP)
PETROL TANK (L)	75		
LPG TANK (L)	75 (Sedan)		
BRAKES	Four-channel. Four wheel disc. Ventilated front disc & finned caliper.		
ANTI-LOCK BRAKING SYSTEM (ABS)	4 channel.		
TRACTION CONTROL (TC)	When sensors detect imminent rear wheel spin, engine torque is reduced. If one wheel is about to spin, braking is applied to transfer torque to wheel with better traction.		
SUSPENSION	Front: MacPherson strut. Direct acting stabiliser bar. Progressive rate coil springs. Rear: Control-Link Independent Rear Suspension (IRS). Semi-trailing arm. Progressive rate miniblock coil springs. Stabiliser bar.		

SPORTS SUSPENSION	(Option.) Front: Firmer spring rate. Revised stabiliser bar diameter. Reduced ride height. Rear: Firmer spring rate. Gas pressure dampers. Wagon: Revised stabiliser bar diameter.			
STEERING	Variable ratio rack & pinion.			
TRACK (mm)	Front: 1569 Rear: 1587			
TURN CIRCLE (kerb to kerb, m)	Front: 11.0			
WHEELBASE (mm)	2788			
EXTERIOR DIMENSIONS (mm)	Length	Width	Height	Ground clearance
INTERIOR DIMENSIONS (mm)	Leg	Shoulder	Head	Hip
GEAR RATIOS	1st 3.06	2nd 1.63	3rd 1.00	4th 0.70
DRIVE	Rear Ratio 3.08:1			
RECOMMENDED PETROL OCTANE RATING	91 (ULP)	95 (PULP) Alternative:91 (ULP)	91 (ULP)	
PETROL TANK (L)	75			
LPG TANK (L)	75 (Sedan)			
BRAKES	Four-channel. Four wheel disc. Ventilated front disc & finned caliper.			
ANTI-LOCK BRAKING SYSTEM (ABS)	4 channel.			
TRACTION CONTROL (TC)	When sensors detect imminent rear wheel spin, engine torque is reduced. If one wheel is about to spin, braking is applied to transfer torque to wheel with better traction.			
SUSPENSION	Front: MacPherson strut. Direct acting stabiliser bar. Progressive rate coil springs. Rear: Control-Link Independent Rear Suspension (IRS). Semi-trailing arm. Progressive rate miniblock coil springs. Stabiliser bar.			

A word about this catalogue. We have tried to make this catalogue as comprehensive and factual as possible. However, since the time of printing some of the information you'll find here may have been updated. Also, some of the equipment shown or described through this catalogue may have been changed and/or is available at extra cost. Further, Holden Ltd. reserves the right to make changes at any time without notice, in prices, colours, materials, equipment and models. Your Holden Retailer has details, and before ordering, you should ask them to bring you up to date. No Holden Retailer or other person is authorised or permitted to give or make any statement, assertion or undertaking in relation to the quality, performance characteristics, descriptions or fitness for any purpose of any Holden product which is at variance with any written statement, assertion or undertaking on any of these subjects given or made by Holden Ltd. A.B.N. 84 006 893 232 or General Motors-Holden's Sales Pty. Ltd. A.B.N. 80 004 688 831 in its published sales literature, and neither company accepts any liability for any such unauthorised action. Holden Ltd. and General Motors-Holden's Sales Pty. Ltd. have authorised retailers in many parts of Australia for the sale of service parts and the provision of service to owners of Holden's products. Every endeavour is made to ensure that such retailers carry adequate stocks of service parts, but neither Holden Ltd. nor General Motors-Holden's Sales Pty. Ltd. makes any promise other than that contained in the New Vehicle Warranty given by Holden Ltd. that such parts or service facilities will be available at any specific location or at any particular time. Express warranties offered for Holden products are subject to the conditions set out in all vehicle handbooks. Details also available from Holden on request. Copyright Holden Ltd. Printed by: SNP Sprint (Aus) Pty Ltd. 151 Forster Road, Mount Waverley, Vic. 3149. FEBRUARY 2003. GPCO00067 AD11170

The smartest way to own a new Holden.

SMART CHOICES. A smart way to get into a new Holden is by talking to Holden Financial Services. A wide range of options is on offer and you can select the terms, conditions and pricing structure to best suit your lifestyle. The SmartChoices range offers affordable, flexible, low monthly repayments¹ and the security of a guaranteed minimum buyback price.² For more information contact your Holden Retailer or call Holden Customer Assistance on 1800 033 349.

SMARTCARE. Holden offers a range of competitively priced insurance products that provide tailor-made protection. The SmartCare comprehensive policy offers new car replacement, agreed value and a genuine Holden Approved parts guarantee plus a range of additional premium benefits.³ For more information see your local Holden Retailer or call the Holden SmartCare Hotline on 1800 060 094.

THE HOLDEN MASTERCARD. With the Holden MasterCard, 5% of every dollar you spend on credit purchases goes toward your rebate on a new Holden.⁴ You can redeem a maximum core rebate of \$3000 on any new Holden.⁴ Use your Holden MasterCard at exclusive Holden MasterCard Bonus Partners and you'll receive an extra 1% bonus rebate. Holden Retailers are Bonus

Partners. When you make a credit purchase at a Holden Retailer you'll earn 2% bonus rebate.⁵ You'll also pay no annual card fee in the first year, get up to 45 days interest free on credit card purchases, and a competitive rate of interest.⁶ To apply, visit any Westpac/Challenge Bank/Bank of Melbourne branch, your local Holden Retailer or call the Holden MasterCard 24-hour customer line on 1300 650 696.

The package wouldn't be complete without extra peace of mind.

WE'RE WITH YOU ALL THE WAY. Holden drivers are backed by the most comprehensive customer care package on the road. With over 300 retailers and 900 Roadside Assistance centres nationwide, few other cars in Australia are supported with the level of customer care offered to Holden owners.

3 YEAR OR 100,000KM NEW VEHICLE WARRANTY. Your peace of mind, guaranteed. Every Holden comes with a 3 year or 100,000km New Vehicle Warranty,⁷ whichever comes first. This factory backed warranty covers items including the engine, transmission, interior and exterior components.

An extended New Vehicle Warranty is able to be purchased. For more details, contact Holden Customer Assistance on 1800 033 349 or your Holden Retailer.

3 YEAR/24 HOUR ROADSIDE ASSISTANCE. Go anywhere, any time, with complete confidence. Holden Roadside Assistance, one of Australia's most comprehensive assistance packages, is complementary for 3 years.⁸

In the event of the unexpected happening, from your keys being locked in the car to mechanical and accident advice, you can get in touch with our 24 hour hotline, 365 days of the year, by calling the toll-free number 1800 817 100.

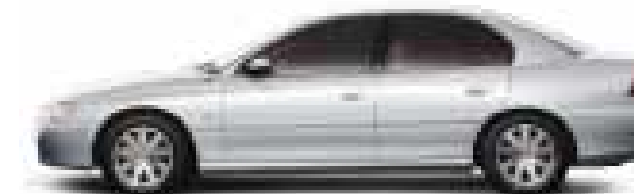
Holden Calais receives the added benefits of Holden Roadside Assist Ultra which includes accommodation, alternative transport, rental car, assistance in case of accident, theft and medical emergency and Australia-wide vehicle recovery. This service is delivered by Assist Australia and the combined resources of the Australian motoring organisations.

A DECIDEDLY DIFFERENT LEVEL OF SERVICE. Retailer support when you need it, where you need it. With retailers strategically located nationwide, the Holden Service Network is the largest in the country. Our service centres are staffed by a team of trained technicians who have access to regular factory training, bringing them up to speed on the latest technology.

If you want to know more about the extensive benefits of Holden ownership, contact Holden Customer Assistance on 1800 033 349, Monday - Friday, 8am - 7pm, Saturday 9am-1pm EST.



Heron



Quicksilver



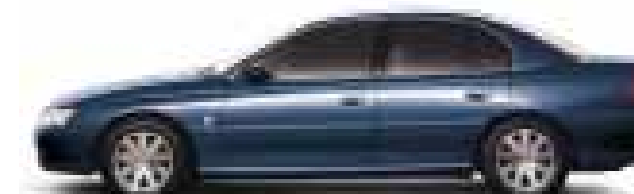
Martini Mica



Shanghai Mica



Delft Mica



Vespers Mica



Turbine Mica



Berry Mica



Phantom Mica

Calais

EXTERIOR OPTIONS	INTERIOR OPTIONS	
	Cloth Trim	Leather Trim
Heron	Anthracite or Light Shale	Anthracite or Light Shale or Cobalt
Martini Mica	Anthracite or Light Shale	Anthracite or Light Shale or Pistachio
Quicksilver	Anthracite or Light Shale	Anthracite or Light Shale or Cobalt
Vespers Mica	Anthracite or Light Shale	Anthracite or Light Shale or Cobalt
Delft Mica	Anthracite or Light Shale	Anthracite or Light Shale or Cobalt
Turbine Mica	Anthracite or Light Shale	Anthracite or Light Shale or Pistachio
Shanghai Mica	Anthracite or Light Shale	Anthracite or Light Shale or Berry Red
Phantom Mica	Anthracite or Light Shale	Anthracite or Light Shale or Berry Red
Berry Mica	Anthracite or Light Shale	Anthracite or Light Shale or Berry Red



Anthracite



Cobalt



Pistachio



Berry Red



Light Shale

Leather trims are optional at an additional cost on Calais. Anthracite or Light Shale Leather trim is optional at an additional cost on Berlina. Option of Anthracite or Shale Cloth on Calais or Berlina. Variations between the colours shown and actual paint colours/interior trim colours may occur due to the printing process. Actual vehicle colours may appear different under certain light conditions.



1. Fees and charges apply. For the annual percentage rate applicable to you contact your local Holden Retailer. 2. Conditions apply. A disposal fee of \$385 (inc'1 GST) applies plus charges for excess wear and tear or excess Kilometres may also apply. 3. Refer to the policy wording for specific terms, conditions and exclusions. 4. Earning and redemption of rebate is subject to the Holden MasterCard Rebate Program Rules. A maximum of \$3000 in the form of Holden MasterCard "core" rebate (plus any additional "bonus" rebate accumulated via the partner program) accrued over a maximum of 5 years may be applied per eligible vehicle purchased. Vehicle sales for which a fleet allowance is paid are not eligible for Holden MasterCard rebate. 5. At participating Retailers only. Credit card purchases of new or used vehicles are not eligible for the 2% Bonus Rebate at Holden Retailers. 6. The interest-free period applies where the card account is fully paid by the due date each month. 7. Refer to your owner's handbook or see your Holden Retailer for full terms, conditions and exclusions. 8. Roadside Assistance may not be available in some rural areas. Refer to your Holden Roadside Assistance booklet or see your Holden Retailer for terms and conditions.

Success is never dull. As you'd expect, Calais and Berlina have a range of colours to match your driving desires.