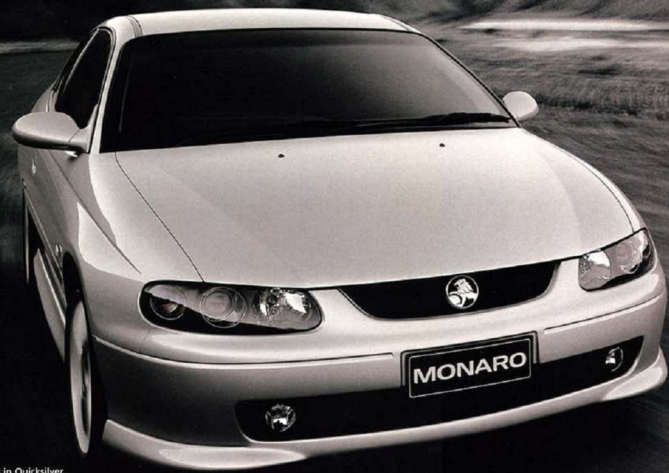


Monaro





► Monaro CV8 in Quicksilver.

Can we make you a car that redefines style? The car that got Australia talking. The car you waited for. The car that redefined motoring. The car that captured the imagination of every driver – to get behind the wheel of a vehicle that combines award-winning automotive design with exhilarating power. Sleek curves, a low profile, all captured in shimmering colour. Everything we love. Everything we know. Everything we believe, built into the one car we always wanted to build. The car many have dreamt about, driving forward the spirit of Holden.



► Monaro CV8 in Purple Haze.

Can we make you a car with unparalleled luxury? Why don't you be the judge. Stop. Look. Take it all in. Goosebumps? Hardly surprising. For this is a special kind of car. The kind of car you've always wanted. The kind of car that makes you look twice. The way the body seems to wrap around the cabin, the smooth curves of the nose and tail. The subtle styling of the front and rear skirts. The expansive bonnet that gives you a sense of restrained power. And as for the inside. True luxury. The only goosebumps that you'll ever feel here are those of sheer indulgence.



► Monaro CV8 in Devil.

Can we make you a car with breathtaking performance? This is a car designed with the driver in mind. Everything we've learnt in over fifty years has been integrated into the Holden Monaro. Whether it's the thrust of the Supercharged CV6 or the awesome new High Output Generation III V8 with the throatier dual exhaust in the CV8, Monaro simply demands to be driven. You'll feel it the moment you sit behind the wheel. Take a seat in a vehicle created for the future and rediscover the joy of driving a car that delivers an exhilarating level of performance.

Can we make you one of the lucky ones? Many dream of owning a Monaro, but few will ever own one. To make your Monaro more exclusive, it can be built to specific order, to the preferences and requirements of the individual. Choice of colour, choice of engine, a range of features and accessories, and in the CV8 a choice of complementing colour interiors. Which is why each Monaro on the road has such a stylish presence. But then, our vision was to create the most eye-catching, unique sports coupe on our roads. You could be one of the lucky ones to own one.



4 Monaro CV8 in Vespers Blue.

Now, can we make you one? The first thing you'll need to do is talk to your Holden Retailer. After all, there is much you need to discuss. You'll find that apart from choosing between the CV6 and CV8 models (and what a choice!), there is a whole host of tough decisions yet to be made. You'll have to choose which accessories you would like and, in the CV8, which interior trim (dependent upon exterior colour). The end result is a unique Holden Monaro. Yours! A vehicle that not only performs like no other car you've ever driven, but also looks like no other car on the road.



◀ Monaro CV8 in Hothouse.



Monato SRS AIR BAG

We can make it ergonomic. Seat yourself in this true driver's cockpit and look around. Everything has been designed with you in mind. The dash is positioned to ensure an optimal view of the road, laid out with the style and sophistication befitting one of the world's truly great sports cars. There are fingertip controls within easy reach and, in the CV8, instruments that are colour co-ordinated with the exterior plus climate control that keeps you comfortable in all driving conditions. Put your hands on the wheel and you'll know at once. This is the car you've always wanted to drive.



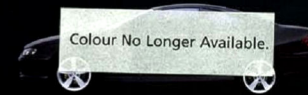
We can make it luxurious. Open the door and breathe deeply. Every Holden Monaro is upholstered in stunning soft leather. The electric seat controls help you find your ideal driving position, and return to it at the touch of a button. Nestle into the wide, well-supported leather seats. Notice the ample head and legroom in the rear. You see, the Monaro is a genuine 2+2, offering the performance and handling of a sports coupe with the comfort and luxury normally associated with a European Marque. It's a vehicle designed to get your heart racing, well before you even start the engine.



We can make it colourful. The Monaro is available in a stunning range of exterior colours. To complement them, the CV6 is available with 1. Anthracite leather interior, black dials, and "Dark Tempest" dash fascia. The CV8 offers a more difficult choice. Depending on exterior colour, co-ordinated leather interiors include: Anthracite leather interior. 2. Purple Haze leather interior. 3. Redhot leather interior. 4. Cobalt leather interior.



Quicksilver



Purple Haze



Devil

CV8 Exteriors

CV8 Interior Options

CV8 Instruments

Redhot

Redhot or Anthracite



Purple Haze

Purple Haze or Anthracite



Devil

Anthracite



Quicksilver

Cobalt or Anthracite



Vespers Blue

Cobalt or Anthracite



Hothouse

Anthracite



Phantom Mica*

Redhot or Anthracite



Redhot



Hothouse



Vespers Blue

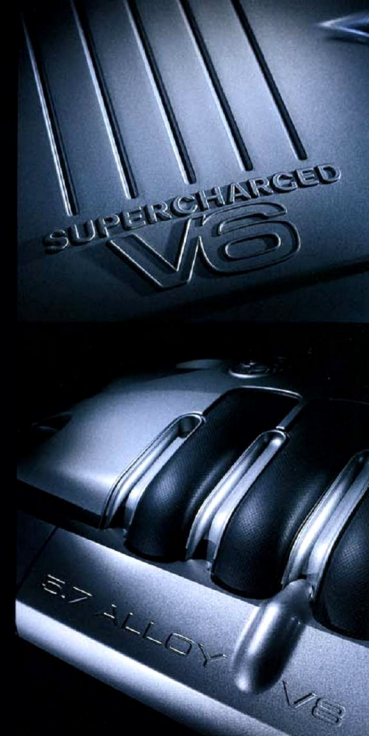


Phantom Mica

*Also available with Yellow instruments on Anthracite interior.
Variations between the colours shown and actual paint colours/interior trim colours may occur due to the printing process. Actual vehicle colours may appear different under certain light conditions.



We can make it powerful. It's a Monaro after all! Firstly, the Supercharged CV6. Under the hood is a power plant offering an impressive 171kW of power and 375Nm of torque. All monitored by the latest diagnostic software delivering smooth power throughout the rev range. Plus, there's a 4-speed automatic transmission designed to extract optimal performance. And then our flagship. The stunning Holden Monaro CV8. One of the greatest Australian performance cars ever built. The new High Output Generation III V8 generates a scintillating 235kW of power and a massive 465Nm of torque. All controlled by a 6-speed manual gearbox, or 4-speed automatic transmission. A vehicle for those who truly love to drive.





We can make it very different. The Monaro CV6 offers you: 1. A stylish "Dark Tempest" dash fascia, a single CD system, in cluster multi-function display and classic Anthracite leather interior. 2. The convenience of an 8-way electric driver's seat with an easy electric fold forward function. 3. All this riding on 17" x 8" alloy wheels.* 4. Plus the Monaro is fitted with powerful projector lamps for added visibility.



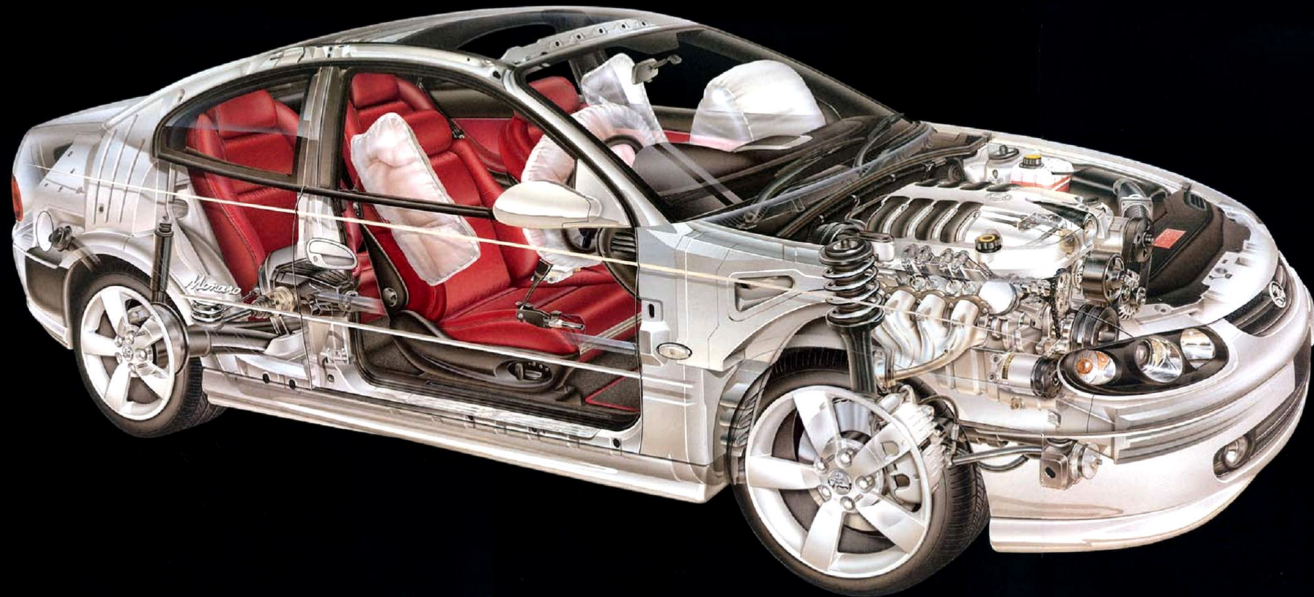
The CV8 offers a choice of coloured leather interiors (dependent upon exterior colour), coloured instrumentation and "Steel" finish dash fascia. 1. An 8-way electric driver's seat with memory settings for three drivers. 2. 260 watt, 6-stack, in-dash CD stereo including 10 speakers, height adjust power antenna switch and 5 preset equaliser. Plus, 3-window multi-function display in cluster. 3. Racing inspired aluminium pedals. 4. 18" sports alloy wheels**



*Steel spare wheel



**Steel spare wheel



We will make it without compromise. The Monaro offers both driver and passengers alike a full suite of active and passive safety systems that deliver total confidence to the driver in all road conditions.

- Pyrotechnic front seat belt pre-tensioners minimise forward movement in a frontal collision.
- Control-Link Independent Rear Suspension (IRS) for added safety when cornering.
- Traction Control (TC) for stable acceleration on difficult road surfaces.
- Front bumper side beams share an offset frontal impact over both sides of the car.
- Bosch 5.3 Anti-lock Braking System (ABS) to help maintain full steering, even under braking.
- Crash Pulse Optimization allows front end to crush progressively for less severe impact.
- Integrated safety cell engineered to withstand high energy loads.
- Front and rear anti-submarining ramps reduce risk of sliding under seat belt in a collision.
- Driver and front passenger airbags have low pressure inflators designed to reduce risk of injury from airbag inflation.
- Driver and front passenger side impact airbags reduce risk of head, neck and chest injury in a severe side collision.
- Strengthened upper B pillar is computer modelled to reduce side impact velocity to head, neck and chest.
- Frontal Offset Enhancement package helps prevent the front wheel intruding into the footwell in a frontal collision.



1.



2.



3.

We can tailor your Monaro. For our complete range of quality Holden accessories see your Holden Retailer. 1. Holden By Design 'I' series alloy wheel. 2. Holden By Design rear wing. 3. Holden By Design 'J' series alloy wheel. 4. Holden approved 1600kg towing package. 5. Holden By Design 'Y' series alloy wheel. 6. Holden Assist, an interactive car safety and security system utilising satellite and global positioning technology.



4.



5.



6.

We can make it yours. SmartChoices. A smart way to get into a new Monaro, or any new Holden, is by talking to Holden Financial Services. A wide range of options is on offer and you can select the terms, conditions and pricing structure to best suit your lifestyle. The SmartChoices range offers affordable, flexible finance, low monthly repayments¹ and the security of a guaranteed minimum buyback price.² For information contact your Holden Retailer or call Holden Customer Service Assistance on 1800 033 349.

SmartCare. Holden offers a range of competitively priced insurance products that provide tailor-made protection. The SmartCare comprehensive policy offers new car replacement, agreed value and a Holden approved parts guarantee plus a range of additional premium benefits.³ For more information see your local Holden Retailer or call the Holden SmartCare Hotline on 1800 060 094.

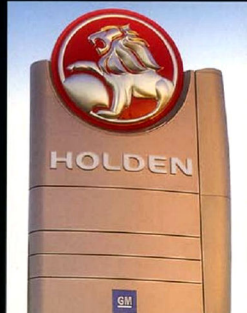
The Holden MasterCard. With the Holden MasterCard, 5% of every dollar you spend on credit purchases goes toward your rebate on a new Holden.⁴ You can redeem a maximum core rebate of \$3000 on any new Holden.⁴ Use your Holden MasterCard at exclusive Holden MasterCard Bonus Partners and you'll receive an extra 1% bonus rebate. Holden Retailers are Bonus Partners. When you make a credit purchase at a Holden Retailer you'll earn 2% bonus rebate.⁵ You'll also pay no annual card fee in the first year, get up to 45 days interest free on credit card purchases, and a competitive rate of interest.⁶ To apply, visit a Westpac / Challenge Bank / Bank of Melbourne branch, your local Holden Retailer or call the Holden MasterCard 24-hour customer line on 1300 650 696.

3-year or 100,000km Warranty. Peace of mind guaranteed. Every Monaro comes with a 3-year or 100,000km New Vehicle Warranty.⁷ This factory backed warranty covers items including the engine, transmission, interior and exterior components. An extended New Vehicle Warranty can also be purchased. For details call 1800 033 349.

3-year/24-hour Roadside Assistance. Anywhere, anytime. We're always there for you. Every Monaro driver is backed by one of the most comprehensive customer care packages on the road, and it's complimentary for 3 years.⁸ If you lose your keys, or need mechanical or accident advice, there's a 24-hour helpline at your service 365 days a year. Simply call 1800 817 100. Holden Monaro drivers receive the added benefits of Holden Roadside Ultra Assist which includes accommodation, alternative transport, rental car, assistance in case of accident, theft and medical emergency and Australia-wide vehicle recovery. This service is delivered by Assist Australia and combined resources of the Australian Motoring Organisations.

Comprehensive Retailer Network. The Holden Service network is the largest in the country, and our service centres are staffed by a team of trained technicians who have access to regular factory training, bringing them up to speed on the latest technology. If you want to know more about the extensive benefits of Holden ownership, contact Holden Customer Assistance on 1800 033 349, Monday to Friday 8am-7pm and Saturday 9am-1pm EST.

1. Fees and charges apply. For the annual percentage rate applicable to you, contact your local Holden Retailer. Subject to credit approval and current terms and conditions. 2. Conditions apply. A disposal fee of \$385 (incl GST) applies plus charges for excess wear and tear or excess kilometres may also apply. For full terms and conditions, please refer to relevant policies at your Holden Retailer. 3. Refer to policy wording for specific terms, conditions and exclusions. 4. Earning and redemption of rebate is subject to the Holden Card Rebate Rules. A maximum of \$3000 in the form of Holden Card 'store' rebate (plus any additional 'bonus' rebate accumulated via the partner program) accrued over a maximum of 3 years may be applied per eligible vehicle purchase. Vehicle sales for which a fleet allowance is paid are not eligible for Holden Card rebates. 5. At participating Retailers only. Credit Card purchases of new and used vehicles are not eligible for the 2% Bonus Rebate at Holden Retailers. 6. The interest-free period applies where the card account is fully paid by the due date each month. 7. Refer to your owner's handbook or see your Holden Retailer for full terms, conditions and exclusions. 8. Roadside Assistance may not be available in some rural areas. Refer to the Holden Roadside Assistance booklet or see your Holden Retailer for terms and conditions.



FEATURES	CV6	CV8
S: standard feature. O: option. H: option from Holden By Design. A: accessory.		
POWERTRAIN		
171kW, 3.8 litre Supercharged V6 engine.	S	
235kW High Output, 5.7 litre Generation III alloy V8 engine with Performance Exhaust.		S
6-speed manual transmission.		S
Electronic control 4-speed automatic transmission.		S
Power or economy mode.	S	O
Limited slip differential.	O	S
MECHANICAL		
Control-Link Independent Rear Suspension (IRS).	S	S
Monaro FE2 Sports Suspension, (Inc. gas pressure rear dampers.)	S	H
Anti-lock Braking System (ABS).	S	S
Traction Control (TC), Off switch.	S	S
WHEELS (steel spare wheel)		
17" x 8" alloy wheels, 235/45 R17 93V tyres.	S	
17" x 8" "Y" series six spoke alloy wheels, 235/45 V-rated tyres.	H	
17" x 8" "Y" series multi-spoke alloy wheels, 235/45 R17 93V tyres.	H	
18" x 8" alloy wheels, 235/40 R18 tyres.		S
18" x 8" "Y" series multi-spoke alloy wheels, 235/40 R18 tyres.		H
EXTERIOR		
Projector headlamps.	S	S
Front foglamps.	S	S
Headlamp guards.	A	A
Bonnet protector.	A	A
Mudflaps (moulded).	A	A
Front, side & rear skirts.	S	S
Sports wing.	H	H
Quick response LED centre stop lamp.	S	S
Chromed exhaust tip.	S	S
Full immersion body corrosion protection.	S	S
Full stainless steel long life exhaust system.	S	S
Full stainless steel long life dual exhaust system.	S	S
DRIVER		
Steering wheel height & reach adjust.	S	S
Leather-wrap wheel.	S	S
Leather covered front armrest, gear shift & handbrake.	S	S
Leather covered gear shift & handbrake.	H	
Cruise control.	S	S
Electric remote control exterior mirrors.	S	S
Road speed dependent intermittent wipers.	S	S
Variable intermittent, road speed sensitive wipers.	S	S
Remote fuel filler door release.	S	S
Electric rear window demist. Auto off timer.	S	S

	CV6	CV8
Headlamps auto on at twilight.	S	S
Headlamps auto off after leaving parked car.	S	S
Rear Park Assist.	O	S
Trip computer, includes: Odometer, Trip distance.		S
Audible & visual speed warning (4 adjustable settings).		S
Distance to empty. Trip distance to go. Time to go.		S
Average speed, Average consumption, Stop watch.	S	S
Trip computer, includes: Average speed, Odometer, Remaining fuel.		S
Average economy on trip. Elapsed trip time. Trip distance. Stop watch.		S
Fuel used on trip. Audible & visual speed warning (4 adjustable settings).		S
Distance to empty. Instant economy. Trip distance to go. Time to go.		S
Service reminder. Appears 1,000km before service is due.	S	S
Satellite navigation. (Global positioning system.)	H	H
Colour coded instruments.	S	S
Tachometer.	S	S
Warning lamps include rear lamp failure.		S
Lamp & chime warning: Parking brake on while vehicle moving.		S
Low fuel.	S	S
Lamp & chime warning: High engine temperature.		S
Mobile phone power point.	S	S
Mobile phone holder.	A	A
SOUND SYSTEM		
Blaupunkt AM/FM stereo electronic tune radio.		S
Local/distant selector switch. Automatic station store memory.	S	S
Radio display repeats in multi-function display.	S	S
Sound system remote controls on steering wheel.	S	S
Compact disc in-dash changer (6 disc).	O	S
Six speakers. Total 80 watts.	S	S
5 preset graphic equaliser - vox, pop (with beat function).		S
10 speaker elements, including subwoofers. Total 260 watts.		S
Power antenna, auto, full up/down.	S	S
Power antenna, fully automatic. Driver adjustable presetting for height. Auto retract with remote control Priority Key.		S
SEATING		
Seat trim in leather. Anthracite black.	S	S
Seat trim in coloured leather.		O
Bucket seats. High rise centre console armrest.	S	S
Sports seats with high side support wings on cushion & seat back.	S	S
Padded front seat head restraints. Height & tilt adjust.		S
8-way electric adjustment of front seats: Slide fore/aft. Cushion tilt.		S
Height, Recline.	S	S
- Memory settings for 3 drivers.		S
Electric front seat side for rear seat access.	S	S
Driver & front passenger seat adjustable lumbar support.	S	S
Driver & front passenger airbag (full size).	S	S

	CV6	CV8
Driver & front passenger side impact airbag.	S	S
Front lap/ash seat belts have webbing clamps & pyrotechnic pre-tensioners. Buckle mounted to seat for consistent fit when seat moved forward or back.	S	S
Front seat belt sash height adjust.	S	S
Anti-submarining ramps in seats reduce risk of sliding under seat belt in a collision.	S	S
Lap/ash seat belts for all seats.	S	S
Rear seat child restraint anchor points.	S	S
CABIN COMFORT		
Air conditioning with rear outlet vents.	S	S
Dual temperature zone climate control: driver & front passenger.	S	S
Priority Key for 2 people automatically restores when unlocking car, settings for: Climate control. Sound system. Trip computer. Speed alert. Transmission power/economy mode. Instrument dimmer.		S
Antenna height. Headlamps/off time delay.		S
Power front windows. Express down driver and passenger window.		S
Remain powered on time delay after engine switched off.	S	S
Power socket, cigarette lighter type.	S	S
Cigarette lighter & ashtray, front, rear.	A	A
Vanity mirror, driver & passenger side.	S	S
Vanity mirror, driver & passenger side, illuminated, with cover.		S
Interior lighting, time delay on entry. Automatic illumination when ignition is turned off. Auto off after 1 hour.		S
Courtesy lamps on doors.		S
Footwell lamps, front.		S
Front reading spotlamps.		S
Stainless steel door sill plates.		S
Plush cut pile carpet.		S
Carpeted floor mats, tailored.	O	S
Suede finish on lower door trim.		S
Anthracite leather on upper door trim.	S	S
Coloured leather on upper door trim.		O
"Dark Tempest" finish dash fascia.	S	S
"Steel" finish dash fascia.		S
STORAGE, CARGO, TOWING		
Twin cup holders in centre console.	S	S
Twin foldout cup holders in instrument panel.		S
Centre console compartment, with lines.	S	S
Mobile phone concealed storage compartment.		S
Door storage bins.		S
Storage pocket rear of driver & passenger seat.	S	S
Carpeted boot floor & spare wheel cover.	S	S
Space saver spare wheel & tyre.	S	S
Towing equipment (see specifications).	A	A

	CV6	CV8
SECURITY		
Remote control Power Key.	S	S
Priority Key.		S
Power or Priority Key operates interior lighting.	S	S
- Operates exterior lamps, to show location of car at night.	S	S
- Engages door deadlocks when pressed twice.	S	S
- Releases deadlocks.	S	S
- Operates central locking for keyless entry through driver's door only.	S	S
- Operates both doors when button kept pressed.	S	S
- Enables/disables alarm system.	S	S
- Opens boot.	S	S
- Disables remote boot release button in glovebox (when locking).	S	S
Power Key & Priority Key have rolling security code.	S	S
Horn chirps if door is ajar when remote locking.	S	S
Flashing red interior warning lamp shows vehicle is protected.	S	S
Engine disabled to immobilise vehicle when key removed from ignition. Unique code for each vehicle.	S	S
Doorlock in driver's door only. Lock cylinder 'freewheels' if anything other than correct key is inserted.	S	S
Slip-type steering lock. If steering wheel is forced, front wheels will not turn.	S	S
Locking wheel nuts.	A	A
Head system security electronics using PIN.	S	S
Headlamps auto off: programmable time delay.	S	S
ROAD SAFETY		
Emergency mode after seat belt pre-tensioners are triggered.		S
On-board computer turns engine & fuel pump off. Unlocks doors.		S
Turns dome lamp on.	S	S
Warning triangle for roadway.	A	A
Holden Assist. Includes: Roadside assistance: call operator on system.		S
SOS button: calls operator, who locates you for emergency services.		S
Airbag deployment: location found automatically & services notified.		S
Keys locked in: operator unlocks. Unauthorised entry: police alerted.		S
Car stolen: tracking & immobilisation. Battery low: operator contacts driver.	O	O

A word about this catalogue. We have tried to make this catalogue as comprehensive and factual as possible. However, since the time of printing some of the information you'll find here may have been updated. Also, some of the equipment shown or described through this catalogue may have been changed and/or is available at extra cost. Further, Holden Ltd. reserves the right to make changes at any time without notice, in prices, colours, materials, equipment and model. Your Holden Retailer has details, and before ordering, you should ask them to bring you up to date. No Holden Retailer is authorised or permitted to give or make any statements, assertion or undertaking in relation to the quality, performance characteristics, descriptions or fitness for any purpose of any Holden product which is at variance with any written statement, assertion or undertaking on any of these subjects given or made by Holden Ltd. A.B.N. 84 006 939 232 or General Motors-Holden's Sales Pty. Ltd. A.B.N. 80 004 469 831 in its published sales literature, and neither company accepts any liability for any such unauthorised action. Holden Ltd. and General Motors-Holden's Sales Pty. Ltd. have authorised retailers in many parts of Australia for the sale of motor parts and the provision of service to owners of Holden's products. Every endeavour is made to ensure that such retailers carry adequate stocks of service parts, but neither Holden Ltd. nor General Motors-Holden's Sales Pty. Ltd. makes any promise other than that contained in the New Vehicle Warranty given by Holden Ltd. that such parts or service facilities will be available at any specific location or at any particular time. Express warranties offered for Holden products are subject to the conditions set out in all vehicle handbooks. Details also available from Holden on request. Copyright Holden Ltd. Printed by: Vega Press Pty. Ltd., 91 Railway Road, Blackburn, Victoria 3130, January 2003. AD11129

SPECIFICATIONS	SUPERCHARGED V6	HIGH OUTPUT GENERATION III V8
ENGINE	V configuration. Cold air intake. High flow air cleaner. OHV design with cross flow cylinder heads. Sequential fuel injection. High energy, distributorless ignition. Twin knock control sensors. Computer diagnostics. Electric cooling fan. Low restriction exhaust in stainless steel.	
	4-bolt	6-bolt
	Electronic control supercharger.	Aluminium alloy block & cylinder heads.
	Triple coils.	Coil-per-cylinder.
BORE x STROKE (mm)	97 x 86	99 x 92
CAPACITY (cc)	3791	5665
COMPRESSION RATIO (t:1)	8.5	10.1
RECOMMENDED FUEL OCTANE RATING	95 (PULP)	91 (ULP)
	Alternative: 91 (ULP)	
POWER (ECE, kW)	171 @ 5200rpm (PULP)	235 @ 5200rpm
TORQUE (ECE, Nm)	375 @ 3000rpm (PULP)	465 @ 4400rpm
GEAR RATIOS (t:1)	Auto 1st 3.06 2nd 1.63 3rd 1.00 4th 0.70 5th 0.50 6th 0.38	Manual 1st 2.86 2nd 1.78 3rd 1.30 4th 1.00 5th 0.74 6th 0.50 7th 0.38
Final drive ratio	3.08	2.96

	SUPERCHARGED V6	HIGH OUTPUT GENERATION III V8		
PETROL TANK (L)	75			
BRAKES	Four wheel disc. Ventilated front disc & finned calliper.			
ANTI-LOCK BRAKING SYSTEM (ABS)	4-channel.			
TRACTION CONTROL (TC)	When sensors detect imminent rear wheel spin, engine torque is reduced. If one wheel is about to spin, braking is applied to transfer torque to wheel with better traction.			
SUSPENSION				
Front -	MacPherson strut. Direct acting stabiliser bar. Progressive rate coil springs.			
Rear -	Control-Link Independent Rear Suspension (IRS). Semi-trailing arm. Progressive rate miniblack coil springs. Stabiliser bar.			
MONARO FE2 SPORTS SUSPENSION				
Front -	Sports springs. Revised stabiliser bar diameter.			
Rear -	Sports springs. Gas pressure dampers.			
STEERING	Variable ratio rack & pinion.			
TRACK (mm)	Front: 1559	Rear: 1577		
TURN CIRCLE (kerb to kerb, m)	11.0			
WHEELBASE (mm)	2788			
EXTERIOR DIMENSIONS (mm)				
	Length	Width	Height	
Front	4789	1841	1397	
INTERIOR DIMENSIONS (mm)				
	Leg	Shoulder	Head	Hip
Front	1072	1515	946	1472
Rear	942	1312	848	1275
CARGO (L)	370			
KERB WEIGHT (Est. kg)	Auto 1603	Manual 1626	Auto 1652	
TOWING	Holden approved 1600kg towing equipment is available. See your Holden Retailer for details.			
SERVICE	1500km (free) inspection, V6 - 15,000km then every 15,000km or 9 months, whichever comes first. V8 - 10,000km then every 10,000km or 6 months, whichever comes first. Maintenance-free, long life, auxiliary belt, no automatic tensioner. Dual drive on V8. Holden Retailer 'Tech 2' computerised analysis available for engine management system.			



HOLDEN
DRIVE ON

holden.com.au