



**HOLDEN**  
DRIVE ON

[holden.com.au](http://holden.com.au)

HOLDEN UTE  
SERIES II





Vehicle shown fitted with optional Holden By Design hard tonneau cover and 4 x 18" alloy wheels



This is passion, melted down and forged into a dream  
This is the heartbeat of the country, moulded into a car  
This is the legendary Holden Ute





## HOLDEN UTE

The new Holden Ute is practically anything you want it to be. A practical work option that's practically a sports car.

**3.8 litre V6 engine** V-shape is a short light six cylinder design to promote excellent ute handling. **Independent Rear Suspension** for passenger car ride and tenacious road grip. **Heavy gauge, galvanised steel tray** for a long service life as a hard-working commercial vehicle. **Compact disc player** Pure CD sound from quality 4 speaker, 40-watt sound system with steering wheel audio switches. **Power Key** remotely deadlocks doors to help protect your Holden Ute at every stop you make.





The new S Ute is all work and all play,  
all grunt and just as much yaa-hoo.  
This is attitude with the  
dial turned all the way up.

**235kW V8 option and 6-speed manual** 5.7 litres of pure performance and the right gear ratio for most on-road scenarios. **4 x 16 inch alloy wheels** Strong, wide wheels that add traction to the Holden Ute driving experience. **Flush fitting tonneau system** with isolated front mount, to reduce vibration and noise into the cabin. **Power windows** include 'express down' windows, and time delay after engine is switched off. **Cruise Control** Features an intuitive twist-switch mechanism for fast, accurate speed adjustment.

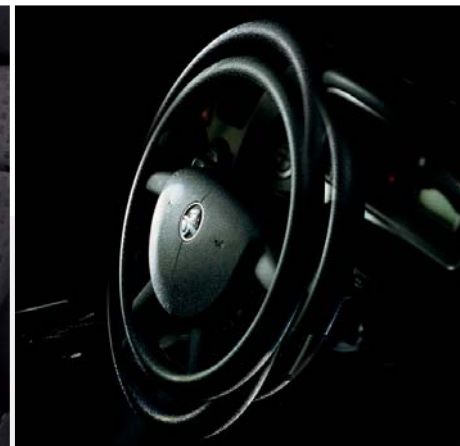
## HOLDEN S UTE





Take control. Expect an instant response. The new, driver oriented instrument panel and interior features are totally integrated around the driver's every whim.

**Covered console compartment** now clears away any mobile phone clutter and provides a dedicated power socket inside. **Door storage bins**, and a netting pocket on bulkhead between seats, organise your 'office' items, or leisure stuff. **Pyrotechnic seat belt pre-tensioners** reduce unwanted forward movement in certain frontal collisions of moderate severity. **Trip computer** includes speed warning, distance to empty, trip distance and time to go, and stopwatch. **Sound system display** repeats in main instruments ahead of driver. **Auto transmission option** has 'gear selected' indicator in instrument cluster.



## INTERIOR FEATURES





*HOLDEN SS UTE*



Nothing, but nothing, fires the imagination like the new SS Ute. This is the Ute that will drive straight off the page and into your soul.

**High Output 245kW 5.7 litre Generation III Alloy V8 engine** and a free-flow performance exhaust that makes all the right noises. **4 x 17" alloy wheels** Complete the powertrain package to deliver powerful acceleration, braking and cornering, all with great control. **Sports suspension** Creates an SS Ute rolling chassis to match awesome V8 performance. **Alloy pedal cluster** The SS Ute cabin bristles with uncompromising sports design. **Six disc in-dash CD** Load fresh CDs, then shuffle the mix on the move from steering wheel controls. **Colour instruments** and optional colour leather trim. An information interface to match the attitude under the bonnet. And seat and door trim that integrate the stunning styling package.

## HOLDEN ENGINES

All Utes are powered by passion. How much passion is up to you: ECOTEC V6 passion, or Generation III Alloy V8 passion.



### V8

With a choice of 235kW/460Nm engine (optional on S) or 245kW/465Nm engine (standard on SS)

- Aluminium alloy construction creates light weight engine for smooth ride
- Lower weight allows softer, more supple front suspension
- Agile handling
- Less weight in front end allows more precise steering response
- One piece induction system made from composite materials for smoother airflow and superior 'breathing'
- Inlet manifold has improved air flow for performance and fuel economy

### V6

152kW of power, 305Nm of torque

- V6 engine is compact and light, for excellent ride and handling
- High power with outstanding fuel efficiency from use of friction reduction techniques on moving parts, especially pistons, rings and valve train
- Faster, more powerful engine management for individual cylinder spark control, to improve performance, driveability and economy
- Die cast inlet manifold smoother for improved air flow to increase power
- Stainless steel long life exhaust

Holden towbars have been specifically designed for the Ute to meet stringent Australian Design Rules.

Only Holden approved towbars are covered by Holden's warranty. Holden also gives you the option of a **dual fuel system with LPG** on a V6 Automatic. This factory fitted system will be totally integrated into your Ute. It will show the level of LPG or petrol, and will even recalculate the 'distance to empty' on the trip computer. This LPG system is covered by Holden's 3 year or 100,000km warranty.





Optional lockable, hinged hard tonneau and 4 x 18" alloy wheels



16" 'S' Series

17" 'X' Series

17" 'U' Series

17" 'Y' Series

18" 'J' Series

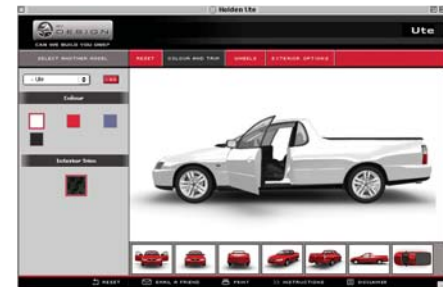


Top: Holden By Design sports profiled steering wheel, gear selector and handbrake are available in Anthracite, Bermuda, Redhot and Cosmo.  
Above: Sports Bar and Sports Bar tonneau  
Right: Optional HBD canopy and alloy wheels



**HOLDEN BY DESIGN**

Holden genuine accessories



You be the designer. HBD-3D is your own personal virtual design studio, allowing you to see what your new Holden would look like with any HBD exterior enhancement; just a click changes the colour, the wheels, whatever. And HBD-3D lets you view your Holden from any angle. Simply visit [www.holden.com.au](http://www.holden.com.au) and follow the prompts to HBD-3D.





## Features

	UTE	S	SS
<b>Powertrain</b>			
152KW, 3.8 litre ECOTEC V6 engine.	S	S	
235KW 5.7 litre Generation III Alloy V8 engine.		O	
245KW High Output 5.7 litre Generation III Alloy V8 engine with Performance Exhaust and Strut Brace.			S
Dual fuel: petrol/LPG. (Avail. with ECOTEC V6/auto trans. Not avail. with FE2 Sports Suspension.)	H	H	
5-speed Getrag manual transmission.	S	S	
6-speed manual transmission. (Option avail. with Gen III V8.)		P	S
Electronic control 4-speed automatic transmission. Power or economy mode.	O	O	O
Limited slip differential.	O	S	S
<b>Mechanical</b>			
Independent Rear Suspension.	S	S	S
FE2 Sports Suspension (Inc. gas pressure rear dampers.)	H	H	S
Anti-lock Braking System (ABS).	P	S	S
Performance Strut Brace.			S
<b>Wheels</b>			
Steel spare wheel.	S	S	S
15" x 7" steel wheels. Centre cap. P205/65 R15 99H tyres.	S		
16" x 7" alloy wheels. 225/55 R16 95V tyres.		S	
16" x 7" SS five-spoke alloy wheels. 225/50 R16 92V tyres.	H	H	
17" x 8" alloy wheels. 235/45 R17 93V tyres.			S
17" x 8" "Y" series multi-spoke alloy wheels. 235/45 R17 93V tyres.	H	H	H
17" x 8" "X" series eight-spoke alloy wheels. 235/45 R17 93V tyres.	H	H	H
17" x 8" "U" series five-spoke alloy wheels. 235/45 R17 93V tyres.	H	H	H
18" x 8" "J" series seven-spoke alloy wheels. 235/40 R18 tyres.	H	H	H
Alloy wheel lock nuts. Set of four.	H/A	H/A	H/A
<b>Exterior</b>			
Body colour grille surround.		S	
Front foglamps.			S
Black headlamp bezels.		S	S
Headlamp guards.	A	A	A
Bonnet protector.	A	A	A
Radiator insect screen.	A	A	A
Country roof bar. (Avail. in black or silver.)	H/A	H/A	
Mudflaps (flexible).			A
Mudflaps (moulded).	A	A	
Nudge bar.	A	A	
Metallic paint.	O	O	O
Exterior mirrors in body colour.		S	S
Towing mirrors.	A	A	A
Lower body kit: Front, side & rear bumperette skirts, in body colour.			S

S: Standard feature. O: Option. P: Option in package, with one or more others. H: Option from Holden By Design. A: Accessory.

	UTE	S	SS
Chromed exhaust.	A	S	S
Roof spoiler, with stop lamp.			S
Tonneau soft cover, flush fitting.	A	S	S
Hard tonneau cover.	A	A	A
Canopy	H	H	H
Tonneau to fit around sports bar.	H/A	H/A	H/A
Tonneau with high-mount stop lamp.	H/A	H/A	H/A
Licence plate frames, standard height or slimline.	A	A	A
Full immersion body corrosion protection.	S	S	S
Stainless steel long life exhaust system.	S	S	S
<b>Driver</b>			
Steering wheel height & reach adjust.	S	S	S
Satin chrome spokes.			S
Sports profile leather wrap wheel, in Anthracite.	H	H	S
Sports profile leather wrap wheel, in Red, Blue or Cosmo.	H	H	H
Leather wrap satin chrome gear knob & handbrake handle. Anthracite.	H	H	S
Leather wrap satin chrome gear knob & handbrake handle. Red, Blue or Cosmo.	H	H	H
Cruise control.	H/A	S	S
Power mirrors.	S	S	S
Road speed dependent intermittent wipers.	S	S	S
Automatic headlamps. Switch on at twilight or low light. Off in normal daylight. Manual override.	S	S	S
Headlamps auto off after leaving parked car. Variable delay.	S	S	S
Trip computer includes: Odometer. Trip distance. Audible & visual speed warning (4 adjustable settings). Distance to empty. Trip distance to go. Time to go. Average speed. Average consumption. Stop watch.			
Service reminder. Appears 1,000km before service is due.	S	S	S
Auto transmission "gear selected" indicator in multi function display.	P	P	P
Colour coded instruments: Red, Silver, Cosmo.			S
Tachometer.	S	S	S
Warning & chime: Parking brake on while vehicle moving. Low fuel.	S	S	S
Mobile phone power socket in console.	S	S	S
Mobile phone holder.	A	A	A
Sound system able to accommodate cellular phone. Auto mute when phone is in use.	S	S	S
<b>Sound system</b>			
Blaupunkt AM/FM stereo electronic tune radio. Local/distant selector switch.			S
Automatic station store memory.	S	S	S
Radio display repeats in multi function display.	S	S	S
Sound system remote controls on steering wheel.	S	S	
Sound system controls on steering wheel. Illuminated switches.			S
Speed dependent volume control.	S	S	S
Compact disc player.	S	S	S
Compact disc in-dash changer (6 disc).	H/O	H/O	S

	UTE	S	SS
Equalizer, to enhance each music style: jazz, rock, classical.			S
Four speakers. Total 40 watts.	S	S	S
Power antenna, auto, full up/down.	A	S	S
<b>Seating</b>			
Seat trim in full cloth. Velour inserts.	S		
Seat trim in full cloth, with sports design.	S	S	S
Seat & upper door trim in coloured leather. (Avail. with climate control & foldout cup holders.)			P
Sheepskin bucket seat covers.	A	A	A
Bucket seats. High rise centre console armrest.	S	S	S
Sheepskin seat inserts.	A	A	A
Sports seats with high side support wings on cushion & seat back.			S
Padded head restraints. Height adjust.	S	S	S
Electric driver's seat height adjust. Includes front & rear cushion tilt.	S	S	S
Driver's seat adjustable lumbar support.	S	S	S
Passenger's seat adjustable lumbar support.		S	S
Driver airbag (full size).	S	S	S
Passenger airbag (full size).	P	O	S
Energy absorbing foam under door trim to minimise side impact load.	S	S	S
Lap/sash seat belts have webbing clamps & pyrotechnic pre-tensioners. Buckle mounted to seat for consistent fit when seat moved forward or back.	S	S	S
Anti-submarining ramps in seats reduce risk of sliding under seat belt in a collision.	S	S	S
Seat belts retracting lap/sash.	S	S	S
Child restraint anchor point.	S	S	S
<b>Cabin comfort</b>			
Air conditioning.	O	S	S
Climate control. Auto/manual mode. (Avail. with leather seats & foldout cup holders.)			P
Power windows. Express down driver & passenger window. Remain powered on time delay after engine switched off.			S
Alloy pedal cluster.	H	H	S
Cigarette lighter & ashtray.	A	A	A
Vanity mirror, driver & passenger side.	S	S	S
Interior lighting, time delay on entry. Automatic illumination when ignition is turned off. Auto off after 1 hour.	S	S	S
Black headlining & pillar trim.			S
"Steel" finish dash fascia.			S
Satin chrome interior door handles.	H	H	S
Stainless steel sill plates.	H	H	H
Plastic sill plates.	A	A	A
Rubber floor mats.	A	A	A
Carpeted floor mats, tailored.	A	A	A
Bulkhead trim cover.	S	S	S
Passenger overhead assist handle, folding.	S	S	S

	UTE	S	SS
Aero windscreen sunshade, front.	A	A	A
Weathershield, in standard width or slimline, driver & passenger window.	A	A	A
Rear windscreen roll up blind.	A	A	A
<b>Storage, cargo</b>			
Twin cup holders in centre console.	S	S	S
Twin fold-out cup holders in instrument panel. (Avail. with leather seats & climate control.)			P
Storage net in bulkhead trim cover.	S	S	S
Centre console compartment, with liner.	S	S	S
Door storage bins.	S	S	S
Cargo protective liner.	A	A	A
Heavy duty cargo floor mat.	A	A	A
Load tie-down hooks.	S	S	S
Additional tie-down hooks.	A	A	A
Towing equipment (see specifications).	A	A	A
<b>Security</b>			
Remote control Power Key.	S	S	S
Key operates interior lighting.	S	S	S
- Engages door deadlocks when pressed twice.	S	S	S
- Releases deadlocks.	S	S	S
- Operates central locking for keyless entry through driver's door only.	S	S	S
- Operates both doors when button kept pressed.	S	S	S
- Enables/disables alarm system.	A	S	S
Key has rolling security code.	S	S	S
Flashing red interior warning lamp shows vehicle is protected.	S	S	S
Engine disabled to immobilise vehicle when key removed from ignition. Unique code for each vehicle.	S	S	S
Door lock in driver's door only. Lock cylinder 'freezeheels' if anything other than correct key is inserted.	S	S	S
Slip-type steering lock. If steering wheel is forced, front wheels will not turn.	S	S	S
Sound system has PIN code security.	S	S	S
Sound system will operate only in original vehicle, to deter theft.	S	S	S
Holden Assist (not avail. with LPG.)		O	O
<b>Road safety</b>			
Emergency mode after seat belt pre-tensioners are triggered. On-board computer turns engine & fuel pump off. Unlocks doors. Turns dome lamp on.	S	S	S
Warning triangle for roadway.	A	A	A
First aid kit.	A	A	A

A word about this catalogue. We have tried to make this catalogue as comprehensive and factual as possible. However, since the time of printing some of the information you'll find here may have been updated. Also, some of the equipment shown or described throughout this catalogue may have been changed and/or is available at extra cost. Further, Holden Ltd. reserves the right to make changes at any time without notice, in prices, colours, materials, equipment and models. Your Holden Retailer has details, and before ordering, you should ask them to bring you up to date. No Holden Retailer or other person is authorised or permitted to give or make any statement, assertion or undertaking in relation to the quality, performance characteristics, descriptions or fitness for any purpose of any Holden product which is at variance with any written statement, assertion or undertaking by Holden Ltd. A.B.N. 84 006 893 232 in its published sales literature, and Holden does not accept any liability for any such unauthorised action. Holden Ltd. has authorised retailers in many parts of Australia for the sale of service parts and the provision of service to owners of Holden's products. Every endeavour is made to ensure that such retailers carry adequate stocks of service parts, but other than for any warranties implied by statute, Holden Ltd. does not make any promise other than that contained in the New Vehicle Warranty given by Holden Ltd. that such parts or service facilities will be available at any specific location or at any particular time. Express warranties offered for Holden products are subject to the conditions set out in all vehicle handbooks. Details also available from Holden on request. Copyright Holden Ltd. January 2004. UTE0104 AD11403

## Specifications

	ECOTEC 3.8 LITRE V6	235KW 5.7 LITRE GEN III V8	245KW 5.7 LITRE GEN III V8																																																	
<b>Engine</b>	'V' configuration. Cold air intake. OHV design with cross flow cylinder heads. Sequential fuel injection. High energy, distributorless, ignition. Twin knock control sensors. Computer diagnostics. Electric cooling fan. Stainless steel exhaust.																																																			
		Aluminium alloy block & cylinder heads.																																																		
		High flow air cleaner.																																																		
	Triple coils. Coil-per-cylinder.																																																			
	Cross-bolted main bearings.																																																			
4-bolt	6-bolt																																																			
	Dual exhaust.	High Performance dual exhaust.																																																		
<b>Bore x stroke (mm)</b>	97 x 86	99 x 92																																																		
<b>Capacity (cc)</b>	3791	5667																																																		
<b>Compression ratio (:1)</b>	9.4	10.1																																																		
<b>Power (ECE, kW)</b>	152 @ 5200rpm	235 @ 5200rpm	245 @ 5600rpm																																																	
<b>Torque (ECE, Nm)</b>	305 @ 3600rpm	460 @ 4000rpm	465 @ 4200rpm																																																	
<b>Gear ratios (:1)</b>	<table border="1"> <tr> <td>Manual</td> <td>Auto</td> <td>Manual</td> <td>Auto</td> <td>Manual</td> <td>Auto</td> </tr> <tr> <td>3.83</td> <td>3.06</td> <td>2.66</td> <td>3.06</td> <td>2.66</td> <td>3.06</td> </tr> <tr> <td>2.19</td> <td>1.63</td> <td>1.78</td> <td>1.63</td> <td>1.78</td> <td>1.63</td> </tr> <tr> <td>1.40</td> <td>1.00</td> <td>1.30</td> <td>1.00</td> <td>1.30</td> <td>1.00</td> </tr> <tr> <td>4th</td> <td>0.70</td> <td>1.00</td> <td>0.70</td> <td>1.00</td> <td>0.70</td> </tr> <tr> <td>5th</td> <td>0.81</td> <td>0.74</td> <td>0.50</td> <td>0.74</td> <td>0.50</td> </tr> <tr> <td>6th</td> <td></td> <td>0.50</td> <td></td> <td>0.50</td> <td></td> </tr> <tr> <td>Final drive ratio</td> <td>3.46</td> <td>3.08</td> <td>3.46</td> <td>3.07</td> <td>3.46</td> </tr> </table>	Manual	Auto	Manual	Auto	Manual	Auto	3.83	3.06	2.66	3.06	2.66	3.06	2.19	1.63	1.78	1.63	1.78	1.63	1.40	1.00	1.30	1.00	1.30	1.00	4th	0.70	1.00	0.70	1.00	0.70	5th	0.81	0.74	0.50	0.74	0.50	6th		0.50		0.50		Final drive ratio	3.46	3.08	3.46	3.07	3.46			
Manual	Auto	Manual	Auto	Manual	Auto																																															
3.83	3.06	2.66	3.06	2.66	3.06																																															
2.19	1.63	1.78	1.63	1.78	1.63																																															
1.40	1.00	1.30	1.00	1.30	1.00																																															
4th	0.70	1.00	0.70	1.00	0.70																																															
5th	0.81	0.74	0.50	0.74	0.50																																															
6th		0.50		0.50																																																
Final drive ratio	3.46	3.08	3.46	3.07	3.46																																															
<b>Recommended petrol octane rating</b>	91 (ULP)																																																			
<b>Petrol tank (L)</b>	70																																																			
<b>LPG tank (L)</b>	70																																																			
<b>Brakes</b>	Four wheel disc. Ventilated front disc & finned caliper. Load sensing brake pressure proportioning valve.																																																			
<b>Anti-lock braking system (ABS)</b>	(Avail: see feature list.) 4 sensor, 3 channel.																																																			
<b>Suspension</b>	Front: MacPherson strut. Direct acting stabiliser bar. Progressive rate coil springs. Rear: Independent Rear Suspension (IRS). Semi-trailing arm. Progressive rate miniblock coil springs. Stabiliser bar.																																																			
<b>SS sports suspension</b>	Front: Revised spring rate. Revised stabiliser bar diameter. Reduced ride height. Rear: Revised spring rate. Gas pressure dampers. Revised stabiliser bar diameter.																																																			
<b>Steering</b>	Variable ratio rack & pinion																																																			

	UTE SS & S	Front: 1569 Front: 1559	Rear: 1587 Rear: 1577														
<b>Track (mm)</b>																	
<b>Turn circle (kerb to kerb, m)</b>	11.5																
<b>Wheelbase (mm)</b>	2939																
<b>Interior dimensions (mm)</b>	Leg: 1071 Head: 1013	Shoulder: 1515 Hip: 1440															
<b>Exterior dimensions (mm)</b>	Length: 5049 Height: 1472	Width: 1845 Ground clearance: 132															
<b>Payload area dimensions (mm)</b>	Length: 2193 Height: 486	Width: 1477 Width at wheel-arches: 1226															
	Area (m <sup>2</sup> ) (Calculated using width between wheelarches)	Volume (m <sup>3</sup> ) (Calculated using width between wheelarches)															
	2.689	1.307															
<b>Kerb weight (kg)*</b> (Est. inc A/C and fluids) *inc optional A/C	Manual 1517	Auto 1540	<table border="1"> <tr> <td>235kw Manual V8</td> <td>245kw Manual V8</td> </tr> <tr> <td>1536</td> <td>1618</td> </tr> <tr> <td>1561</td> <td>1624</td> </tr> <tr> <td>1608</td> <td></td> </tr> <tr> <td>1614</td> <td></td> </tr> <tr> <td></td> <td>660</td> </tr> <tr> <td></td> <td>650</td> </tr> </table>	235kw Manual V8	245kw Manual V8	1536	1618	1561	1624	1608		1614			660		650
235kw Manual V8	245kw Manual V8																
1536	1618																
1561	1624																
1608																	
1614																	
	660																
	650																
<b>Payload<sup>†</sup> (kg)</b>	UTE 773	823															
	S 735	710	670 660														
	SS		660 650														
<b>Gross Vehicle Mass (kg)</b>	UTE 2290	2365															
	S 2275	2275	2275 2275														
	SS		2275 2275														
<b>Towing (kg)</b>	Holden approved 1600 towing package is available. See your Holden Retailer for details.																
<b>Service</b>	1500km (at no cost) inspection, V6 - 15,000km then every 15,000km or 9 months, whichever comes first. V8 - 10,000km then every 10,000km or 6 months, whichever comes first. Maintenance-free, long life, accessory drive belt with automatic tensioner. Dual belt on V8. Holden Retailer 'Tech 2' computerised analysis available for engine management system.																

\*Kerb Weights based on pre-production data. All fluid levels at their nominated capacity.  
<sup>†</sup>Payload includes the mass of the vehicle occupants and air conditioning. Does not include options such as LPG. Deduct the mass of these from the quoted payload to obtain the available payload mass.  
 Fitment of Holden By Design alloy wheels and low profile tyres will reduce payload capacity.



**Holden Assist**  
Protect your investment with Holden Assist - one of Australia's most advanced satellite car monitoring systems. An interactive primary security system, Holden Assist uses mobile phone and global positioning technology to notify you if someone tries to gain unauthorised entry to your car. And, if stolen, it will locate and track it, then in conjunction with police, may immobilise the engine. If an airbag and/or seat belt pre-tensioners are deployed, and the driver cannot be contacted - or if requested by the driver - Holden Assist will notify emergency services. It can even unlock the car remotely if you lock your keys inside.

Holden Assist service is dependent on the availability and functionality of the GSM network and GPS system. Not available on vehicles fitted with LPG. Not available on base Ute.

## The smartest way to own a new Holden



**SmartChoices** A smart way to get into a new Holden is by talking to Holden Financial Services. A wide range of finance options is on offer and you can select the product, term and payment structure to best suit your lifestyle. The SmartChoices range offers you flexibility to select from a choice of monthly repayments<sup>1</sup> and the option of the security of a guaranteed minimum buy back price.<sup>2</sup> For more information contact your Holden Retailer or call Holden Customer Assistance on 1800 033 349.

**SmartCare** Holden offers a range of competitively priced insurance products that provide tailor-made protection. The SmartCare comprehensive motor vehicle policy offers new car replacement, agreed value and a genuine Holden Approved parts guarantee plus a range of additional premium benefits.<sup>3</sup> For more information see your local Holden Retailer or call the Holden SmartCare hotline on 1800 060 094.

**Holden Leasing** Holden Leasing is a vehicle fleet leasing specialist, offering a wide range of leasing and management products and services. Whatever your fleet size, Holden Leasing can provide the best in flexible, value driven and specialist fleet leasing products and services to suit your needs. Our Holden focus means we can provide the very best fleet leasing and management solutions for any business running, or wanting to run, a predominantly Holden fleet. For more information about your leasing options, please call Holden Leasing on 03 9696 7400.

**The Holden MasterCard** With the Holden MasterCard, 5% of every dollar you spend on credit purchases goes toward your rebate on a new Holden.<sup>4</sup> You can redeem a maximum core rebate of \$3000 on any new Holden.<sup>4</sup> Use your Holden MasterCard at exclusive Holden MasterCard Bonus Partners and you'll receive an extra 1% bonus rebate. Holden Retailers are Bonus Partners. When you make a Holden MasterCard purchase at a Holden Retailer you'll earn 2% bonus rebate.<sup>5</sup> You'll also pay no annual card fee in the first year, get up to 45 days interest free on credit card purchases, and a competitive rate of interest.<sup>6</sup> To apply, visit any Westpac/Challenge Bank/Bank of Melbourne branch, your local Holden Retailer or call the Holden MasterCard 24-hour customer line on 1300 650 696.

**The package wouldn't be complete without extra peace of mind.**

**We're with you all the way** Holden drivers are backed by one of the most comprehensive customer care packages on the road. With over 300 retailers and 900 Roadside Assistance centres nationwide, few other cars in Australia are supported with the level of customer care offered to Holden owners.

**3 year or 100,000km New Vehicle Warranty** Your peace of mind, guaranteed. Every Holden comes with a 3 year or 100,000km New Vehicle Warranty,<sup>7</sup> whichever comes first. This factory backed warranty covers items including the engine, transmission, interior and exterior components. A Holden Extended Warranty is able to be purchased. For more details contact Holden Customer Assistance on 1800 033 349 or your Holden Retailer.

**3 year/24 hour Roadside Assistance** Go anywhere, anytime, with complete confidence. Holden Roadside Assistance, one of Australia's most comprehensive assistance packages, is complimentary for 3 years.<sup>8</sup> In the event of the unexpected happening, from your keys being locked in the car to mechanical and accident advice, you can get in touch with our 24 hour hotline, 365 days of the year, by calling the toll-free number 1800 817 100. This service is delivered by Assist Australia and the combined resources of the Australian motoring organisations.

**A decidedly different level of service** Retailer support when you need it, where you need it. With retailers strategically located nationwide, the Holden Service Network is one of the largest in the country. Our service centres are staffed by trained technicians who have access to regular factory training, bringing them up to speed on the latest technology.

If you want to know more about the extensive benefits of Holden ownership, contact Holden Customer Assistance on 1800 033 349, Monday - Friday, 8am - 7pm, Saturday 9am - 1pm EST. or visit [www.holden.com.au](http://www.holden.com.au)

## Holden Utes are the stuff legends are made of And legends are never dull



Heron



Quicksilver



Redhot



Cosmo Mica



Phantom Mica



Redhot



Cosmo



Anthracite



### SS Ute

Exterior Options	Interior Options	Instrument Clusters
Heron	Anthracite cloth or Anthracite leather trim Redhot leather trim	Silver Grey Redhot
Quicksilver	Anthracite cloth or Anthracite leather trim Redhot leather trim	Silver Grey Redhot
Redhot	Redhot cloth or Anthracite leather trim or Redhot leather trim	Redhot
Cosmo Mica	Cosmo cloth or Anthracite leather trim or Cosmo leather trim	Cosmo
Phantom Mica	Redhot cloth or Anthracite leather trim or Redhot leather trim	Redhot

Leather trims are optional at an additional cost only on SS Ute.

Ute only available in Heron, Quicksilver, Redhot and Phantom Mica. S and SS Ute available in all above colours.

Variations between the colours shown and actual paint colours/interior trim colours may occur due to the printing process. Actual vehicle colours may appear different under certain light conditions. Metallic or Mica paints are available at an additional cost.

1. Fees and charges apply. For the annual percentage rate applicable to you contact your local Holden Retailer. 2. Conditions apply. A disposal fee of \$385 (inc'l GST) applies plus charges for excess wear and tear or excess kilometres may also apply. 3. Refer to the policy wording for specific terms, conditions and exclusions. 4. Earning and redemption of rebate is subject to the Holden MasterCard Rebate Program Rules. A maximum of \$3000 in the form of Holden MasterCard 'core' rebate (plus any additional 'bonus' rebate accumulated via the partner program) accrued over a maximum of 5 years may be applied per eligible vehicle purchased. Vehicle sales for which a fleet allowance is paid are not eligible for Holden MasterCard rebate. 5. At participating Retailers only. Credit card purchases of new or used vehicles are not eligible for the 2% Bonus Rebate at Holden Retailers. 6. The interest-free period applies where the card account is fully paid by the due date each month. 7. Refer to your owner's handbook or see your Holden Retailer for full terms, conditions and exclusions. 8. In remote or sparsely populated areas you may experience delays in obtaining Roadside Assistance. Refer to your Holden Roadside Assistance booklet or see your Holden Retailer for terms and conditions.