



CALAIS/BERLINA



The ideal blend of performance
and luxury in its most potent form



The new Holden Calais with aggressive sports styling dominates the road. Outstanding qualities are also fully realised in the new Holden Berlina, which continues to set exceptional standards in luxury and refinement.

Quiet confidence with a dash of extravagance. The luxurious interior of the Holden Berlina beckons. A sheer delight for the driver and passengers alike. Innovative comfort features and thoughtful touches are in abundance. Performance, style and refinement, Berlina delivers them all in perfect measure.

Supremely responsive all new Alloytec V6 engine effortlessly answers every demand the road places on you.

Electronic Brakeforce Distribution regulates the force between the front and rear brakes to provide improved braking balance.

New 16 inch alloy wheels further enhance Berlina's refined styling. (Steel spare)

Single zone electronic climate control responds quickly to changes in conditions. Manual override ensures driver specific settings are available.

New Rear Parking Sensors help remove the guesswork when reverse parking.



BERLINA





Retracting cargo blind keeps your cargo out of the sun and out of sight.

60/40 split fold rear seat accommodates various passenger and payload combinations.

Load tie-down rails use aircraft design technology to enhance cargo storage flexibility while travelling. Anchor hooks can be positioned at any point along the rail.

Remote tailgate unlock is especially useful when you have an armful of shopping.

Roof carry bars are another versatile option when the need to carry bulky items arises.



A luxury wagon, absolutely. Yet still every inch a driver's car. The perfect combination of performance, handling and spaciousness. Berlina Wagon gives you the versatility and the room to suit yourself, in so many ways.

BERLINA



High performance and technology that stirs you deep within. Calais is a car designed to be driven. The all new high performance Alloytec 190 V6 engine, coupled with a new five speed automatic transmission with Active Select, delivers exhilarating and responsive power. Calais doesn't simply challenge the definition of sports luxury performance, it totally eclipses it.



New five speed automatic transmission with Active Select assures drivers enjoy smooth, crisp almost seamless gearshifts. Once Active Select is activated, paddle shift controls on the steering wheel allow the driver to go from auto to manual mode shift at a touch.

New sporty 17 inch alloy wheels complete the powertrain package to handle power and driving control. (Steel spare)

Sports styled lower body kit gives your Calais an extra edge and aggressive good looks.

Heated driver and passenger mirrors with memory function and automatic off. When reverse gear is selected, the passenger side mirror dips to highlight low level hazards.

Electronic Stability Program helps control under-steer and over-steer, maintain grip and safely stabilise the car.

Electronic Brake Assist uses sensors to detect a panic brake situation and immediately add braking pressure to all wheels so that the ABS system engages to help reduce stopping distances.



CALAIS





6 disc in-dash CD player places CD sound through 10 speakers enhanced by subwoofers to indulge your senses.

Leather seat trim adds a modern luxury feel.

8-way electric driver's seat with memory allows up to 3 individual drivers to maintain their ideal driving position at a touch.

Multi function display featuring audible speed warnings, distance travelled, average fuel consumption and distance to empty, helps to add certainty to your journey.

Active front seat head restraints and seatbacks are designed to reduce the risk of neck injuries or whiplash in the event of a low velocity rear impact collision.



Calais enhances your driving pleasure in every sense. From the moment you get behind the wheel you feel it. This is a true driver's car. The exhilaration awaits.



V6

Alloytec V6 Alloytec 190 V6 Gen III V8

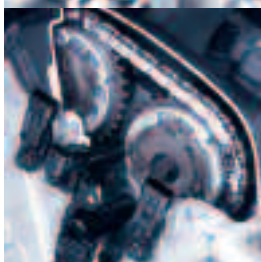
The pure sensation of driving. Revolutionary engine technology, new transmissions and more advanced safety features are all seamlessly integrated to work in perfect harmony. All of which makes the new Calais and Berlina even more finely tuned to you – the driver.

V8





Double Overhead Camshaft improves valve positioning and creates better fuel and air mixture flow, which in turn leads to better performance. Four valves per cylinder, two inlet and two outlet, help the engine breathe better, for greater performance. Towing and acceleration is enhanced, delivering better overall driveability.



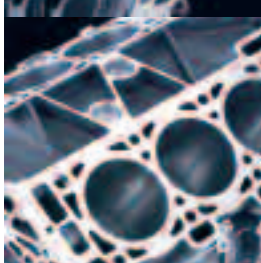
Continuously variable valve timing. On the Alloytec 190, continuously variable cam phasing is an active system that determines when the valves open and close. Whether it's accelerating or towing, the valves are continuously adjusted to best meet the driver requirements at that moment. On the Alloytec 175 the camshaft phasing is on the intake valve.



New variable intake manifold for outstanding performance and driveability. On the Alloytec 190, the variable intake manifold changes the plenum volume to assist resonance tuning of the inlet flow. At lower engine speeds cylinder charging is boosted to provide maximum torque. At higher engine speeds ram air cylinder charging occurs for increased power.



Electronic Throttle Control co-ordinates the driver's intentions with actions of various powertrain control components, helping maximise performance and optimise fuel consumption.



New alloy construction for performance and strength. The alloy construction means that not only is the engine lighter, but it can also withstand higher combustion temperatures and that means efficiency and lower exhaust emissions.*



<p>Alloytec 190</p> <p>3.6 litres Lightweight, alloy construction 190kW of power at 6500rpm 340Nm of torque at 3200rpm</p>	<p>Alloytec 175</p> <p>3.6 litres Lightweight, alloy construction 175kW of power at 6000rpm 320Nm of torque at 2800rpm</p>	
---	---	--

V6 ALLOYTEC

The passion of driving has found a new expression. One of the most sophisticated and advanced production engines ever manufactured in Australia, the all new Alloytec V6 delivers exhilarating performance. It is a world-class engine and Calais/Berlina drivers will be able to enjoy the responsiveness and outstanding driveability of this new automotive technology for years to come. Available in two high performance variants, both the Alloytec 175 available on Berlina and the Alloytec 190 available on Calais will bring new levels of power and torque.*

*Compared with the ECOTEC 3.8 litre V6

V6 Transmissions

Five speed automatic transmission with Active Select

On Calais, the all new high performance Alloytec 190 V6 engine is standard with a new five speed automatic transmission with Active Select. Active Select is activated by pressing the 'AS' button in the centre console. It provides the option of automatic or manual transmission shift modes. Paddle shift controls on the steering wheel then allow drivers to change from automatic to manual at a touch.

Four speed automatic transmission

On Berlina, the Holden four speed automatic transmission has new software and a new control module which allows the transmission and engine to communicate at a faster rate. This gives drivers new levels of refinement, with consistent shifts and enhanced smoothness. The four speed automatic is teamed with the Alloytec 175.

V8 Transmissions

A 4 speed automatic transmission is standard when choosing a V8 engine.

GEN III ALLOY V8

The power of Calais/Berlina's driving passion culminates in Holden's 5.7 litre Generation III Alloy V8. Supremely powerful, yet surprisingly lightweight, this V8 engine completely dominates the road, delivering free-flowing power whenever it is demanded.

235kW of power and 460Nm of torque.

New Electronic Throttle Control co-ordinates the driver's intentions with actions of various powertrain control components, for improved launch feel and to help maximise performance.

Aluminum alloy construction creates a light weight engine for a smoother ride.

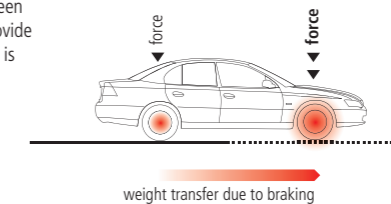
One piece induction system made from composite materials for smooth airflow and superior breathing.



SAFETY

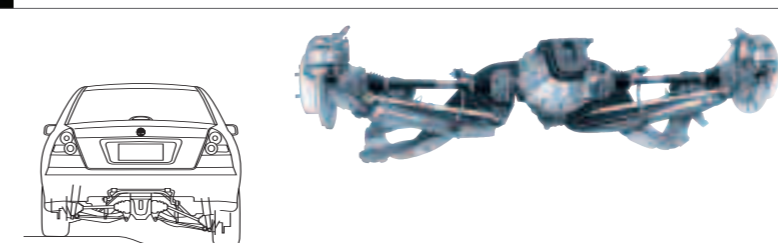
Performance demands uncompromising safety. Ultimately safety is always a priority. Along with enhancements to performance, more than ever, Calais and Berlina put peace of mind and safety first.

Electronic Brakeforce Distribution (EBD) regulates the force between the front and rear brakes to provide improved braking balance. EBD is standard on Calais and Berlina.

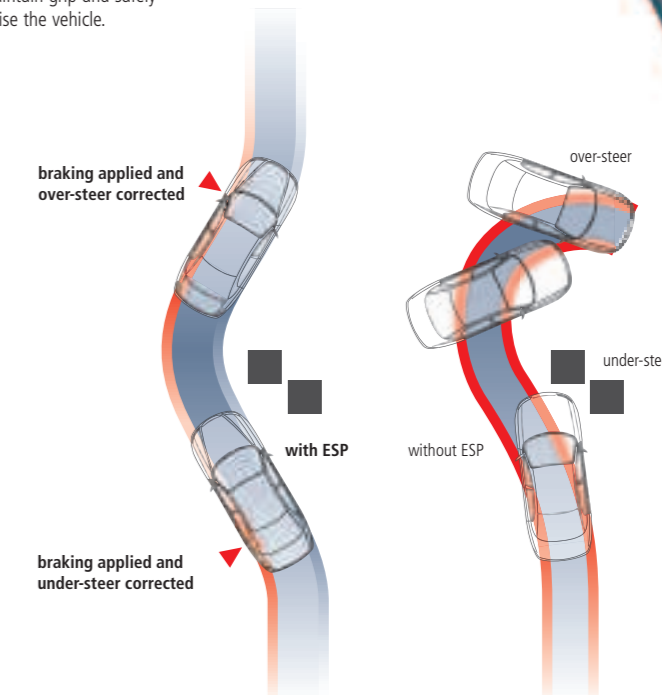


Full-size driver and passenger airbags* for improved protection in a frontal impact, and driver and front passenger side impact airbags* help protect head, neck and chest in a side collision.

Control Link Independent Rear Suspension, with dual control arms, helps keep your Calais or Berlina stable on the road at all times. This is particularly useful in challenging cornering situations.



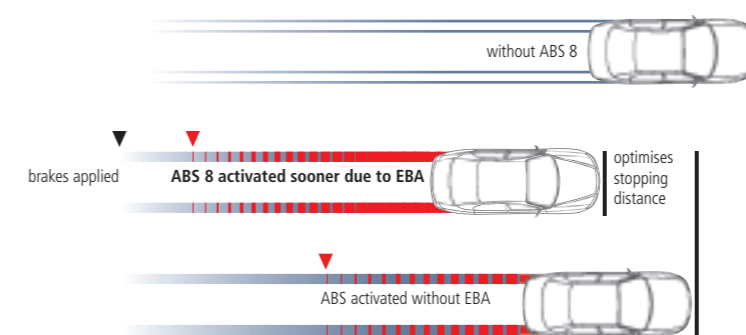
On Calais, Electronic Stability Program (ESP) helps control under-steer and over-steer, to maintain grip and safely stabilise the vehicle.



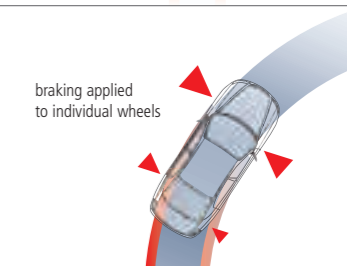
ABS 8 (on Alloytec models) technology helps to optimise stopping distances. Improved Traction Control reduces slip of driven wheels by using engine and brake control. This helps maintain grip in difficult driving conditions.

On Calais, Electronic Brake Assist uses sensors to detect a panic brake situation and immediately add braking pressure to all wheels so the ABS system reduces stopping distances.

On Berlina, the Brake Assist system provides additional braking assistance by allowing the driver to reach the ABS threshold sooner and therefore help reduce stopping distances.



Corner Brake Control (CBC) During heavy braking on corners the CBC function is activated on Alloytec models with ESP. CBC senses different wheel rotational speeds and co-ordinates the brakes as they are applied to individual wheels. This helps to ensure vehicle stability is maintained. CBC is available as standard on Calais.

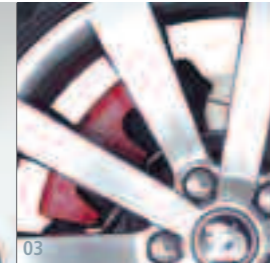


* Driver and passenger front airbags will inflate only if car is involved in certain severe frontal collisions. Airbags form part of the Supplemental Restraint System (SRS) as they assist, but do not replace, safety offered by seatbelts. * Side impact airbags will deploy and offer protection in some, but not all, severe side impacts.

HSV Senator Everywhere you look you see the unerring hand of some of the world's most skilled automotive designers and engineers. Endlessly rewarding and endlessly powerful with the HSV-exclusive 6.0 litre LS2 297kW V8. Senator rewards its driver with HSV tuned luxury suspension incorporating level ride, unique 'Prestige' 19 inch alloy wheels in Chrome Shadow finish with Pirelli P Zero tyres and HSV's performance C6 caliper braking system. Inside the cabin the Senator is a world of luxury. Performance luxury front and rear seats are trimmed in soft feel Nappa Leather with perforated Lismore suede inserts. Understandably, you would think it was just about luxury. But then you turn it on.



01



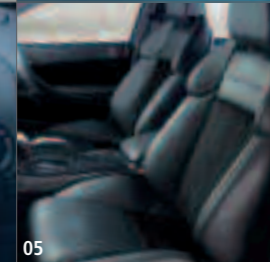
03



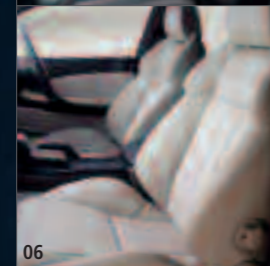
04



02



05



06

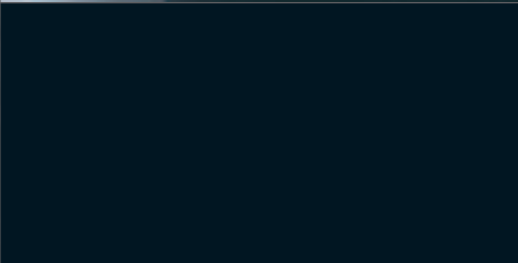
- 01 HSV Prestige front fascia with chrome accents
- 02 260W 10-speaker state-of-the-art entertainment sound system including sub-woofers. Dual zone electronic climate control for driver and front passenger. Height and reach adjustable steering wheel with illuminated audio controls
- 03 HSV Performance Braking System
- 04 HSV Prestige front fog lamps
- 05 Anthracite interior
- 06 Light Reed Anthracite combination interior



Make your mark. Lead by design and reflect your individual flair with an extensive range of enhancements and accessories from Holden By Design. Explore all the possibilities at www.holden.com.au/holdenbydesign and www.holden.com.au/genuineaccessories



01



04



03

02

- 01 Red leather-wrapped sports steering wheel, gear selector and handbrake (also available in Anthracite - Silver Foil)
- 02 Protection up front with stylish, practical bonnet and headlight protectors
- 03 HBD SS type spoiler with rear mounted stop lamp (a more aggressive HBD Performance Spoiler also available)
- 04 Expand your new Holden's cargo carrying capacity with a genuine Holden Roof Rack
- 05 17" x 8" W series alloy wheel
- 06 17" x 8" I series alloy wheel
- 07 17" x 8" Y series alloy wheel
- 08 18" x 8" N series alloy wheel
- 09 18" x 8" J series alloy wheel
- 10 18" x 8" L series premium machined face alloy wheel
- 11 Brakes for drivers who enjoy their driving and demand more. HBD performance brakes feature larger 320mm, 10 slot front rotors with eye-catching, Holden branded red calipers and ventilated rear discs (for V8 models with 17" or larger wheels only)
- 12 HBD DVD Player with 7" high resolution, LCD screen. DVD, CD and MP3 compatible. Includes remote control, infra-red headphones and games console input

- 13 Berlina (sedan) HBD upgraded audio system from Blaupunkt, comprising power amplifier (4 x 50W RMS), 4 x ultraflat 2 way component speakers (70W RMS), 2 x silk dome tweeters (100W RMS) and optional powered sub woofer (140W) (Berlina upgrade shown)
- 14 Calais HBD upgraded audio system from Blaupunkt, comprising power amplifier (4 x 50W RMS), 4 x ultraflat door speakers (2 x 70W RMS, 2 x 80W RMS), 2 x silk dome tweeters (100W RMS) and 2 x 60W RMS parcel shelf subwoofers
- 15 31 litre, 12V/240V portable refrigerator boasting 41 can capacity and quick chill function
- 16 Organise your belongings on the move. A practical, good looking and collapsible storage solution from HBD
- 17 Stylish, practical floor mats complement and protect your new Holden
- 18 Fully integrated, hands-free 'Bluetooth' connectivity for your compatible mobile phone allows you to make and answer calls at the touch of a button (subject to mobile phone capability, see your Holden Dealer for further information)



05



09



06



07



08



10



11



12



13



14



15



16



17

Features

	BERLINA	CALAIS	BERLINA WAGON
Powertrain Alloytec V6	S	S	
175kW 3.6 litre High Performance Alloytec V6			
190kW 3.6 litre High Performance Alloytec V6		S	
Electronic Throttle Control	S	S	S
4 speed electronic automatic transmission	S	S	
5 speed automatic transmission with Active Select		S	
Powertrain Gen III V8 (Option)	O	O	O
235kW 5.7 litre Gen III Alloy V8			
Electronic Throttle Control	S	S	S
4 speed electronic automatic transmission	S	S	S
Limited Slip Differential	S	S	S
Control and handling			
Control Link Independent Rear Suspension	S	S	S
Luxury Sports Suspension		S	
Anti-lock Braking System (ABS)	S	S	S
Brake Assist (BA)	S	S	S
Traction Control (TCS)	S	S	S
Electronic Brakeforce Distribution (EBD)	S	S	S
Electronic Stability Program (ESP) with Corner Brake Control (Alloytec V6 only)		S	
Electronic Brake Assist (EBA) (Alloytec V6 only)		S	
Wheels			
15" steel spare wheel	S	S	S
16" x 7" alloy wheels. 215/60 R16 95V tyres. (4)	S	S	
17" x 8" alloy wheels. 235/45 R17 94V tyres. (4)		S	
Exterior			
Chrome finish header on bonnet lip over grille	S	S	S
Projector headlamps	S	S	S
Front foglamps	S	S	S
Metallic paint	S	S	S
Exterior mirrors in body colour	S	S	S
Chrome finish window surrounds	S	S	S
Black mesh reflex applique on rear fascia		S	
Dark tail lamps		S	
Front, side and rear skirts		S	
Black mesh inserts in front fascia		S	
Chrome finish exhaust, tailpipe extension	S	S	S
Tailgate dust deflector in body colour		S	
Full immersion body corrosion protection	S	S	S
Stainless steel long life exhaust system	S	S	S
Driver			
Steering wheel height and reach adjust	S	S	S
Leather-wrap steering wheel	S	S	
Sports profile leather-wrap steering wheel, in Anthracite		S	
Leather-wrap satin chrome finish gear selector knob and handbrake handle. Anthracite	S	S	S
Cruise control	S	S	S
Electric remote boot release	S	S	
Electric remote tailgate lock/unlock		S	
Power exterior mirrors	S	S	S
Mirrors heated. Auto off.		S	
Passenger side exterior mirror dips when reverse gear selected to show low-level hazards		S	
Variable intermittent road speed sensitive wipers	S	S	S
Rear window wiper/washer		S	
Rear Parking Sensors	S	S	
Automatic headlamp mode. Switches on at twilight or low light. Manual override	S	S	S
Headlamps auto off feature. (Variable delay)	S	S	S

S: Standard feature O: Option

	BERLINA	CALAIS	BERLINA WAGON
Driver continued			
Trip computer includes: Average speed. Odometer. Average economy on trip.	S	S	S
Elapsed trip time. Trip distance. Fuel used on trip. Audible and visual speed warning. (4 adjustable settings). Distance to empty. Instant economy. Trip distance to go. Time to go. Remaining fuel. Stop watch			
Service reminder. Appears 1,000km before service is due	S	S	S
Chrome finish accent rings around instruments	S	S	S
Tachometer	S	S	S
Warnings include rear lamp failure		S	
Warning and chime occurs: Parking brake on while vehicle moving. Low fuel.	S	S	S
Drivers seatbelt not being worn			
Mobile phone power socket in console	S	S	S
Sound system able to accommodate compatible cellular phone with phone kit fitted.	S	S	S
Auto mute when phone is in use			
Occupant safety			
Active front seat head restraints and seatbacks help reduce risk of injury in collision from behind		S	
Driver and front passenger airbags (full size)	S	S	S
Driver and front passenger side impact airbags	S	S	S
Strengthened upper B pillar to help reduce side impact velocity to head, neck and chest	S	S	S
Front lap/sash seat belts with webbing clamps, force limiters and pyrotechnic pre-tensioners	S	S	S
Front seat belt sash height adjustable		S	
Anti-submarining ramps in seats reduce risk of sliding under seat belt in a collision	S	S	S
Rear seat child restraint anchor points	S	S	S
Sound system			
Blaupunkt AM/FM stereo electronic tune radio. Local/distant selector switch.	S	S	S
Automatic station store memory			
Radio display repeats in multi function display	S	S	S
Sound system remote controls on steering wheel	S	S	S
Speed dependent volume control	S	S	S
6 disc in-dash CD player	S	S	S
5 preset graphic equalizer: vox, pop, with boost function	S	S	S
Six speakers. Total 80 watts	S	S	
10 speaker elements, including subwoofers. Total 260 watts		S	
Power antenna, fully automatic. Driver adjustable pre-setting for height.	S	S	S
Auto retract with remote control Power or Priority Key			
Seating			
Velour faced seats	S	S	
Leather faced seats with leather door trim inserts	O	S	O
Front bucket seats with high rise padded leather console armrest		S	
Electric driver's seat height adjust. Includes front and rear cushion tilt	S	S	
8-way electric adjustment of front seats: Slide. Height. Recline		S	
Driver's seat memory settings for 3 driver positions		S	
Driver and front passenger seat adjustable lumbar support	S	S	S
Rear seat centre fold-away tray	S	S	
Rear seat centre armrest	S	S	S
Two rear seat bolster head restraints		S	
Two height adjustable rear seat head restraints		S	S
Cloth covered black headlining and pillar trim		S	
Cabin comfort			
Single zone electronic climate control. Auto/manual mode. Rear outlet vents	S	S	
Dual zone electronic climate control: driver and front passenger		S	
Priority Key for 2 people automatically restores when unlocking car, settings for: Climate control. Sound system. Trip computer. Speed alert. Instrument dimmer.		S	
Antenna height. Headlamps-off time delay			

	BERLINA	CALAIS	BERLINA WAGON
Cabin comfort continued			
Power windows, front and rear. Express down driver and front passenger windows.	S	S	S
Remain powered on time delay after engine switched off.			
Override switch for rear windows			
Vanity mirror, driver and passenger side	S	S	
Vanity mirror, driver and passenger side. Illuminated with cover		S	
Footwell lamps, front	S	S	S
Sunglasses holder	S	S	S
Front reading spotlamps	S	S	S
Rear reading lamps	S	S	S
Satin chrome finish interior door handles	S	S	S
Passenger overhead assist handles, folding, front and rear	S	S	S
Storage, cargo			
Twin fold-out cup holders in instrument panel	S	S	S
Twin cup holders in rear seat centre fold-away tray	S	S	
Dash-top storage compartment	S	S	S
Mobile phone concealed storage compartment	S	S	S
Centre console compartment, with lid	S	S	S
Fold-down rear seat centre 'ski' hatch for long loads	S	S	
60/40 split fold rear seatback		S	
Cargo area storage locker for small items		S	
Load tie-down rails		S	
Carpeted cargo area		S	
Carpeted boot floor and spare wheel cover	S	S	
Luggage net (adjustable) in boot to keep small items in place.		S	
Cargo tie-down hooks to stretch net flap over boot floor			
Body coloured roof carry bars		S	
Security			
Remote control Power Key	S	S	S
Remote control Priority Key		S	
Remote Control Power/Priority Key:			
– Operates interior lighting. Time delay on entry. Automatic illumination when engine turned off	S	S	S
– Operates exterior lamps, to show location of car at night	S	S	S
– Engages door deadlocks when pressed twice	S	S	S
– Releases deadlocks	S	S	S
– Operates central locking for keyless entry through driver's door only	S	S	S
– Operates all doors when button kept pressed	S	S	S
– Enables/disables alarm system	S	S	S
– Opens boot	S	S	
– Disables remote boot release button in glovebox (when locking)	S	S	
– Unlocks/locks tailgate		S	
– Key has rolling security code	S	S	S
– Horn sounds if door is ajar when remote locking	S	S	S
– Engine immobiliser	S	S	S
– Door lock in driver's door only. Lock cylinder 'freewheels' if anything other than correct key is inserted	S	S	S
– Slip-type steering lock. If steering wheel is forced, front wheels will not turn	S	S	S
– Retracting roller cargo blind		S	
– Sound system operates only in original vehicle. Also has PIN code security.	S	S	S
Road safety			
Emergency mode after seat belt pre-tensioners are triggered. On-board computer turns engine and fuel pump off. Unlocks doors. Turns dome lamp on	S	S	S

HBD and accessories

	BERLINA	CALAIS	BERLINA WAGON
Control and handling			
FE2 Sports Suspension (includes gas pressure rear dampers)	H	H	H
Performance brakes (V8 only, fitted with 17 inch or larger wheels only)	H	H	H
Wheels			
16" x 7" Q series five-spoke alloy wheels. 225/50 R16 92V tyres. (4)		H	H
17" x 8" Y series multi-spoke alloy wheels. 235/45 R17 94Z tyres. (4)		H	H*
17" x 8" Y series multi-spoke alloy wheels. 225/50 R17 94V tyres. (4)		H	
17" x 8" W series five-spoke alloy wheels. 235/45 R17 94Z tyres. (4)		H	H*
17" x 8" W series five-spoke alloy wheels. 225/50 R17 94V tyres. (4)		H	
17" x 8" I series six-spoke alloy wheels. 235/45 R17 94Z tyres. (4)		H	H*
17" x 8" I series six-spoke alloy wheels. 225/50 R17 94Z tyres. (4)		H	
18" x 8" J series seven-spoke alloy wheels. 235/40 R18 91Z tyres. (4)		H	H*
18" x 8" J series seven-spoke alloy wheels. 225/45 R18 91W tyres. (4)		H	
18" x 8" N series six-spoke alloy wheels. 235/40 R18 91Z tyres. (4)		H	H*
18" x 8" N series six-spoke alloy wheels. 225/40 R18 91W tyres. (4)		H	
18" x 8" L series six-spoke alloy wheels. 235/40 R18 91Z tyres. (4)		H	H*
(Black inserts/machined facia)			
18" x 8" L series six-spoke alloy wheels. 225/45 R18 91W tyres. (4)		H	
(Black inserts/machined facia)			
Alloy wheel lock nuts. Set of four	H/A	H/A	H/A
Exterior			
Headlamp guards	A	A	A
Bonnet protector	A	A	A
Mudflaps (moulded)	A	A	A
Towing mirrors	A	A	A
Holden By Design decklid lip spoiler	H	H	
Holden By Design 'S' Type spoiler	H	H	
Holden By Design 'SS' Type spoiler	H	H	
Holden By Design Performance Spoiler	H	H	
License plate frames, standard height or slimline	A	A	A
Driver			
Sports profile leather wrap steering wheel, in Anthracite - Silver Foil	H	H	H
Sports profile leather wrap steering wheel in Redhot	H	H	H
Leather-wrap satin chrome gear knob and handbrake handle. Redhot or Anthracite	H	H	H
Rear Park Assist		A	
Satellite navigation (Global positioning system)	H	H	
Mobile phone holder	A	A	A
Bluetooth mobile phone kit	H/A	H/A	H/A

H: Option from Holden By Design A: Accessory

*Mandatory tyre specification with FE2 suspension fitted

	BERLINA	CALAIS	BERLINA WAGON
Driver continued			
Folding 3rd row 'Plus 2' child seat. (Not avail. with LPG fitted)			A
Compact disc in-dash changer (6 disc)	H	H	
Upgraded audio – Speakers and Amp		H	
Upgraded audio – Speakers and Amp and Subwoofer		H	H
Cabin comfort			
Alloy faced pedals	H	H	H
Electric sunroof. Tilt and slide. Can slide fully or to two preset positions.	H	H	H
Auto close when vehicle switched off, unless overridden. Anti-jam facility.			
Auto close when vehicle immobilised. Factory fitted			
Overhead DVD player	H/A	H/A	H/A
Cigarette lighter and ashtray, front and rear	A	A	A
Stainless steel sill plates	H	H	H
Plastic sill plates	A	A	A
Rubber floor mats	A	A	A
Carpeted floor mats, tailored	A	A	
Aero windscreen sunshade, front	A	A	A
Weathershield, in standard width or slimline, driver and front passenger window	A	A	A
Rear sunguard	A	A	
Storage, cargo			
Car fridge – 31 litres	A	A	A
Cargo safety barrier		H/A	
Cargo protective liner (moulded)	A	A	A
Cargo tie-down net		A	
Load tie-down strap kit		A	
Vinyl carpet protector		A	
Cargo area alloy protection rail		A	
Aero style roof carry bars	A	A	S
(compatible for use with Holden ski carriers, bike carrier and roof storage box)			
Multi-purpose roof bars		A	
(compatible for use with alloy roof tray, ski carriers, bike carrier and roof storage box)			
Towing equipment (see specifications)	A	A	A
Cargo Organiser	A	A	A
Superlift shock absorbers	A	A	A
Road safety			
Warning triangle for roadway	A	A	A
First aid kit	A	A	A

Specifications

	175kW, 3.6 litre High Performance Alloytec V6	190kW, 3.6 litre High Performance Alloytec 190 V6	235kW 5.7 Litre Gen III V8
Engine	3.6L 60-degree Double Overhead Cam V6 with 4 valves per cylinder. Sequential fuel injection. High energy, distributorless ignition. Twin knock control sensors with individual cylinder adaptive control. Onboard diagnostics. Electric cooling fan. Stainless steel exhaust		'V' configuration. High flow, low restriction air intake. OHV design with cross flow cylinder heads. Sequential fuel injection. High energy, distributorless, ignition. Twin knock control sensors. Onboard diagnostics. Electric cooling fan. Stainless steel exhaust
	Electronic throttle control		
	Aluminium alloy block and cylinder heads		
	Low restriction air intake	Low restriction air intake with acoustic dampening chambers	High flow, low restriction air intake
	Aluminium oil pan		
	Continuously variable camshaft phasing for inlet cams	Continuously variable camshaft phasing for inlet and exhaust cams. Variable intake manifold	
	Coil-on-plug	Coil-per-cylinder	
	Cross-bolted main bearings. 6-bolt		
Bore x stroke (mm)	94 x 85.6		99 x 92
Capacity (cc)	3565		5665
Compression ratio (:1)	10.2		10.1
Power (ECE, kW)	175 @ 6000rpm		235 @ 5600rpm
Torque (ECE, Nm)	320 @ 2800rpm		460 @ 4000rpm
Gear ratios (:1)	4sp Auto	5sp AS	4sp Auto
	1st 3.06	3.42	3.06
	2nd 1.63	2.21	1.63
	3rd 1.00	1.60	1.00
	4th 0.70	1.00	0.70
	5th	0.75	
	Final drive ratio 3.08	2.87	3.07
Recommended petrol octane	91 (ULP)		
Petrol tank capacity (L)	75		
Brakes	Four-channel. Four wheel disc. Ventilated front disc and finned caliper		
Anti-lock Braking System (ABS)	4 wheel speed sensors, 4 channel		
Traction Control (TCS)	When sensors detect imminent rear wheel spin, engine torque is reduced. If one wheel is about to spin, braking is applied to transfer torque to wheel with better traction		
Electronic Stability Program (ESP) (Calais)	4 wheel speed sensors, 1 steering angle sensor, 1 yaw sensor, 1 lateral g-sensor, 4 channel		
Suspension	Front MacPherson strut. Direct acting stabiliser bar. Progressive rate coil springs	Rear Control-Link Independent Rear Suspension (IRS). Semi-trailing arm. Progressive rate miniblock coil springs. Stabiliser bar	
	Wagon Revised stabiliser bar diameter		
Luxury Sports Suspension (Calais)	Front Firmer spring rate. Revised stabiliser bar diameter. Reduced ride height	Rear Firmer spring rate	
	Wagon Revised stabiliser bar diameter		
Steering	Variable ratio rack and pinion		
Track (mm)	Front: 1569	Rear: 1577	
Turn circle (kerb to kerb, m)	Sedan: 11.0		Wagon: 11.5
Wheelbase (mm)	Sedan: 2789		Wagon: 2939
Exterior Dimensions (mm)	Length	Width	Height
	Sedan 4895	1842	1440
	Wagon 5044	1847	1527
		Shoulder	Head
	Front 1071	1515	Sedan: 992 Wagon: 1007
	Rear 986	1522	Sedan: 966 Wagon: 1071
			1515
Ground Clearance	Berlina: 114 Calais: 112		
	117		
	1441		
	1515		
Interior dimensions (mm)	Leg	Shoulder	Hip
	Front 1071	1515	Sedan: 992 Wagon: 1007
	Rear 986	1522	Sedan: 966 Wagon: 1071
			1515
Cargo volume (L)	Sedan: Rear seat up (to top of seat back) 465. Wagon: 2752 (Rear seat folded down)		
Kerb weight (kg) Auto*	Berlina V6	Calais V6	
	Sedan 1587	1642	
	Wagon 1663		
Towing (kg)	Holden approved 1200, 1600 and 2100 towing equipment is available. See your Holden Dealer for details		
Service	V6 – 3000km (at no cost) inspection, 15,000km then every 15,000km or 12 months, whichever comes first V8 – 3000km (at no cost) inspection, 10,000km then every 10,000km or 6 months, whichever comes first. Maintenance-free, long life, accessory drive belt with automatic tensioner. Dual belt on V8. Holden Dealer 'Tech 2' computerised analysis available for engine management system		

*Vehicle Weights based on pre-production data. All fluid levels at their nominated capacity

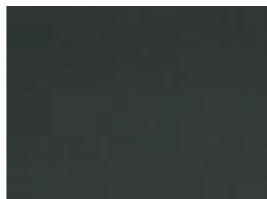
Interior trims



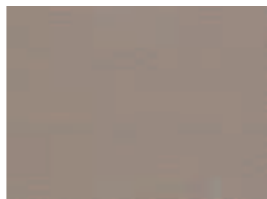
Berlina Neutral Pewter cloth



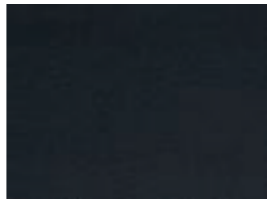
Calais Neutral Pewter cloth (optional)



Neutral Pewter leather (optional on Berlina)



Calais Light Reed leather (not applicable with Barbados exterior colour)



Calais Anthracite Black leather

Exterior colours



Quicksilver Metallic



Martini Mica



Barbados Metallic



Heron White



Shanghai Mica



Phantom Mica



Odyssey Metallic



Vespers Mica

Anthracite or Light Reed Leather trim is standard on Calais. Neutral Pewter leather trim available at an additional cost on Berlina. Variations between the colours shown and actual paint colours/interior trim colours may occur due to the printing process. Actual vehicle colours may appear different under certain light conditions. Trim patterns are not to scale. Indicative only.

A word about this catalogue. We have tried to make this catalogue as comprehensive and factual as possible. However, since the time of printing some of the information you'll find here may have been updated. Also, some of the equipment shown or described through this catalogue may have been changed and/or is available at extra cost. Further, Holden Ltd. reserves the right to make changes at any time without notice, in prices, colours, materials, equipment and models. Your Holden Dealer has details, and before ordering, you should ask them to bring you up to date. No Holden Dealer or other person is authorised or permitted to give or make any statement, assertion or undertaking in relation to the quality, performance characteristics, descriptions or fitness for any purpose of any Holden product which is at variance with any written statement, assertion or undertaking on any of these subjects given or made by Holden Ltd. A.B.N. 84 006 893 232 or General Motors-Holden's Sales Pty. Ltd. A.B.N. 80 004 688 831 in its published sales literature, and neither company accepts any liability for any such unauthorised action. Holden Ltd. and General Motors-Holden's Sales Pty. Ltd. have authorised Dealers in many parts of Australia for the sale of service parts and the provision of service to owners of Holden's products. Every endeavour is made to ensure that such dealers carry adequate stocks of service parts, but neither Holden Ltd. nor General Motors-Holden's Sales Pty. Ltd. makes any promise other than that contained in the New Vehicle Warranty given by Holden Ltd. that such parts or service facilities will be available at any specific location or at any particular time. Express warranties offered for Holden products are subject to the conditions set out in all vehicle handbooks. Details also available from Holden on request. Copyright Holden Ltd. June 2005. CABEHSV0605 AD11738

There are rewards to buying a Holden that go beyond the joy of driving one

Easy Purchase Options

Finance SmartChoices Provided by GMAC Financial Services is an array of automotive finance products designed to help the dream of driving a new Holden become a reality. Just select the product, term and payment structure that best suits your lifestyle and your Holden Dealer can provide more information.

Insurance Holden SmartCare Insurance provided by GMAC Financial Services offers a range of competitively priced insurance products, providing tailor-made protection, at whatever level of cover you need. For more information, call the SmartCare hotline on 1800 060 094.

Leasing Holden Leasing Whatever the size of your fleet, Holden Leasing offers a range of flexible, value driven, specialist fleet leasing products. Years of experience means they can provide the best solution for you. Call Holden Leasing on 03 9696 7400 for more information.

Holden MasterCard Holden MasterCard can assist you to get into a new Holden sooner. 10% of credit purchases on this card goes towards a Rebate of up to \$3,000 on your new Holden.¹ That's a \$1 saving towards a new Holden for every \$10 spent. There are a range of extra features including up to 45 days interest free² on credit purchases and a competitive interest rate. Apply³ online at www.holden.com.au/mastercard or call Holden MasterCard's 24 hour help line 1300 650 696.

Ownership Benefits

Service Holden Service With over 300 Holden Dealers, Holden can supply an enviable level of customer care. Our Service Network is one of the largest in the country. Only Holden Dealership technicians have access to regular Holden factory training.

Warranty Holden Warranty Every new Holden comes with a New Vehicle Warranty, covering your Holden for 3 years or 100,000 kilometres, whichever comes first. This factory backed warranty covers items including the engine, transmission, interior and exterior components. For support after that, a Holden Extended Warranty can be purchased for vehicles that have travelled less than 100,000 kilometres and prior to the vehicle being registered for 3 years from date of first registration. Refer to your owner's handbook or see your Holden Dealer for full terms, conditions and exclusions.

Roadside Assistance 24 Hour Roadside Assistance Provided for the first 3 years of your new Holden's life⁴, Holden Roadside Assistance is one of Australia's most comprehensive assistance packages with over 3000 Roadside Assistance patrols nationwide.⁵ There to help with even the smallest service, the toll-free Roadside Assistance hotline is always open, 1800 817 100.

Roadside Ultra Assistance Available as an optional upgrade for a period of 3 years from the first date of registration for an additional fee. Roadside Ultra provides additional benefits, over and above those supplied by our standard Roadside Assistance program. In certain circumstances it covers accommodation, alternative transport, rental car, accident assistance, Australia-wide vehicle recovery and more.⁶ For more information call 1800 645 668, 8am to 8pm EST.

Club Holden Owning a Holden has another great benefit – Club Holden. It's a free online service that provides exclusive vehicle and owner information tailored to your Holden. Register today at www.club.holden.com.au.⁷

For more information contact

Holden Customer Assistance on 1800 033 349
Monday to Friday 8am to 7pm or Saturday 9am to 1pm EST
or visit www.holden.com.au

¹ A total of \$3000 in the form of Holden Card 'Core' Rebate (plus additional 'Bonus Rebate' accumulated via the Partner Program) accrued over a maximum of five years may be applied per eligible vehicle purchased. Vehicle sales for which a fleet allowance is paid are not eligible for Holden MasterCard Rebate. Earning and redemption of Rebate towards a new Holden is subject to the Holden Card Rebate Program Rules.

² The interest-free period applies where the card account is fully paid by the due date each month.

³ Applications are subject to Westpac's normal lending criteria. ⁴ From date of first registration. ⁵ In remote or sparsely populated areas you may experience delay in obtaining Roadside Assistance. Refer to the Roadside Assistance brochure in your glove box for full terms and conditions of this service. ⁶ See the Roadside Assistance brochure in your glove box for full terms and conditions of this service. ⁷ Most Holden vehicles from 1997 can be registered for Club Holden.



HOLDEN
DRIVE ON

holden.com.au