



Astra

Coupe | 5 Door Hatch | Wagon

Be bold. Look sharp. Everything Australian drivers have come to love about the multi-award winning Astra range just got better. Now there are even more ways to enjoy the seductive blend of contemporary European styling, spirited performance and perfectly balanced handling.

Whatever you're looking for in a small car, Astra has the answer. The addition of the new Astra CDTi Diesel now gives you the option of refined diesel performance with optimum fuel economy. Designed with attitude, the sleek Astra SRI Turbo Coupe is also engineered to perform. This is a car that simply demands to be driven. The spacious Astra Wagon answers every demand of today's active lifestyle – now there's room to do it all. And of course, the popular Astra 5 Door Hatch is as dynamic to drive as ever.

Adding to driver confidence, Astra also boasts a broad range of standard safety features including Brake Assist (BA), Anti-Lock Braking System (ABS) and 4 airbags as a minimum across all models.* Powered by the acclaimed 1.8 ECOTEC engine, with performance enhancing sports mode on automatic transmission models, the Astra range gives you the choice of CD and CDX levels on all body styles and the new CDTi, 1.9 litre diesel on the 5 Door Hatch. Plus you can experience pure sports performance behind the wheel of the 2.0 litre SRI Turbo Coupe. Drive a new Astra. Live life in your lane.



*6 airbags on Astra 5 Door Hatch CDX and CDTi, CDX Wagon, CDX Coupe and SRI Turbo Coupe

Design says so much. The Astra range speaks your language. At the leading edge, it cuts through the everyday. Bold, aerodynamic body lines and an athletic profile have come to set the Astra apart from the rest. From the projector style headlamps, which provide a wide beam pattern for improved visibility, to the stylish tail lamps which create an even distribution of light, the Astra is renowned for its seamlessly integrated design.

The contoured body of the Astra 5 Door Hatch delivers higher levels of performance and control. The spacious Wagon is equally impressive, carrying everything off in true Astra style. You also can't ignore the look and feel of the Astra Coupe. The sharp, sleek sports design and striking interior will make you want to drive. The strong aerodynamic lines of the SRi Turbo Coupe immediately signal its intent – to deliver true performance at its head-turning best.

What your eyes see, the driver feels. Whatever body style you choose, Coupe, Hatch or Wagon, you'll experience cutting edge design that totally stirs the senses. **The acclaimed Astra range. Great to look at in the street. Even better to drive.**



Astra CDX shown with accessory 18" x 7.5" alloy wheels, roof spoiler and lower body kit comprising front, side and rear skirts

Compromise nothing. Extend your horizons. Fast-paced lifestyles demand performance, comfort and most of all flexibility. The extended Astra range gives you the freedom to do it all in total style.

It's all about choice. The Astra Wagon packs in as much as you do. The extra load space and versatility of a wagon doesn't come at the expense of eye-catching looks and sharp, precise handling. Qualities you'll also fully appreciate driving both the Astra Coupe and Astra Hatch, with their various specification levels designed to fulfil your exact requirements.

The number of engine variants is particularly impressive, including the responsive 1.8 litre ECOTEC, the powerful new 1.9 litre turbo diesel and potent 147kW 2.0 litre turbo. In fact, you now have the flexibility to choose from eight unique Astra models. **The flexible Astra range. Now you can do it all.**



Go beyond. Look deep inside. Style is nothing without substance. Every Astra's interior mirrors the strong contemporary exterior design. Body contours and contrasts are reflected in the design of everything, from the driver's centre console to the striking interior trim. Seats also feature enhanced contours, high lateral supports, long cushions and optimised driving adjustments. High quality finishes and soft touch fabrics add to the ambience and comfort levels of the spacious interior.

As you'd expect, design works in perfect harmony with the driver. The driver-oriented centre console houses a multi function display and a 6 disc in-dash Blaupunkt CD player on CDX and SRi Turbo models (single disc CD player on CD and CDTi models). All models give you access to the stereo system through steering wheel mounted controls. On the CDX, CDTi and SRi Turbo models a sophisticated trip computer is also at your fingertips. The CDX Coupe and SRi Turbo indulge you even further with leather-faced, heatable front sports seats with lumbar support. These are also available as an optional package on the CDX Hatch. **It's your personal space. Make the most of it in a new Astra.**



Astra CDTi 5 Dr Hatch interior shown

The Astra range. It's all about choice





Astra CD

5 Dr Hatch | Wagon

Performance, safety and outstanding interior comfort combine in a perfectly balanced driving package. No detail has been overlooked, with innovative features such as a convenient foldable key and projector style headlamps to further improve visibility and driving confidence.

Specific feature highlights:

- 1.8 litre ECOTEC engine linked to a smooth 5-speed manual or 4-speed automatic transmission with sport mode.
- On 4-speed automatic transmissions, switching to sport mode adjusts the gear shift pattern, holding gears longer, for a more dynamic drive.
- 4-wheel disc brakes with Anti-lock Braking System (ABS) combined with Brake Assist (BA).
- Driver, front passenger and front side impact airbags reduce the risk of injury in some serious collisions.
- Seven speaker Blaupunkt single-disc CD player with MP3 function.
- Steering wheel mounted stereo controls place high quality entertainment at your fingertips.
- Air conditioning with variable temperature control and multi function display.
- The added convenience of front power windows and heated power mirrors.



Astra CD

Coupe | 5 Dr Hatch with optional pack

The Astra is already packed with features, but some people prefer that little bit more. Now you can hit the streets in your new 3 Door Coupe or 5 Door Hatch with sporty 15" alloy wheels (steel spare), rear power windows (5 Door Hatch only) and cruise control.

Specific feature highlights:

- Stylish 15" alloy wheels add to street presence. (Steel spare)
- Cruise control makes every journey even more of a pleasure.
- Rear power windows complete the package (5 Door Hatch only).



Astra CDX

Coupe | 5 Dr Hatch | Wagon

Dynamic styling blends with a vast array of luxury features to bring you the joy of driving in a most compelling form.

Specific feature highlights:

- Stylish 16" alloy wheels further add to Astra CDX's distinctive looks. (Steel spare)
- On the Coupe you'll find leather-faced, heated front sports seats with lumbar support and 8-way adjustment to enhance driving comfort.
- Leather wrap steering wheel.
- Seven premium speakers with a 6 disc in-dash CD player and seven channel graphic equaliser. Digital signal processing delivers 'jazz' or 'rock' style sound.
- Multi function trip computer with graphic information display.
- Cruise control and power windows place convenience at your fingertips.
- Front and rear fog lamps enhance visibility and driving safety.
- Semi automatic air conditioning allows you to preselect the ideal cabin temperature.
- Full size curtain airbags for additional safety.



Astra Wagon's spacious load area.

The wide Astra Wagon load platform offers up to a generous 454 litres of luggage space, extending to 1549 litres with the rear seats lowered. The loading height is particularly low. And a retractable load compartment cover hides your luggage away from prying eyes.



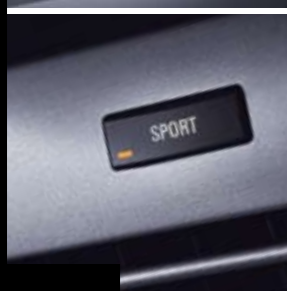
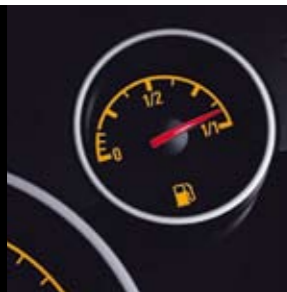
Astra CDTi Diesel

5 Dr Hatch

Welcome to the future. European turbo diesel technology at its most refined. Silky smooth responsiveness and outstanding fuel economy are just part of the story. Packed with a host of standard features the CDTi is built to perform with outstanding reliability and safety. Have it all with the new Astra Diesel CDTi.

Specific feature highlights:

- Powerful 1.9 litre ECOTEC turbo diesel engine.
- 6-speed manual transmission.
- Optional 6-speed automatic transmission with Active Select.
- Sports Chassis Pack with sport mode. (Manual only)
- Sport mode (when engaged) gives more responsive steering and throttle control. (Manual only)
- Electronic Stability Program (ESP) helps to control under-steer and over-steer, maintain grip and stabilise your Astra.
- Blaupunkt single disc CD player with MP3 function.
- Driver, front passenger and front side impact airbags.
- Full size curtain airbags for additional safety.
- Air conditioning with variable temperature control.
- 16" alloy wheels enhance the dynamic styling. (Steel spare)



Diesel

Setting new standards in performance and economy.

The modern diesel engine is a powerful, efficient, sophisticated power plant that uses less fuel and emits less harmful emissions. When it comes to potent performance, fuel economy and environmental responsibility, Astra's new generation common rail diesel technology ticks all the right boxes.



Astra SRI Turbo

Coupe

Breathtaking turbo performance. Stirring sports dynamism. Supremely confident handling. The SRI Turbo Coupe has arrived.

Specific feature highlights:

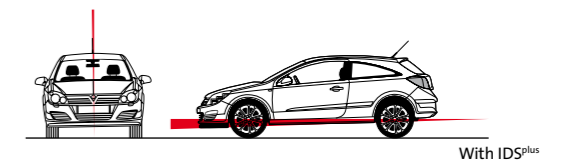
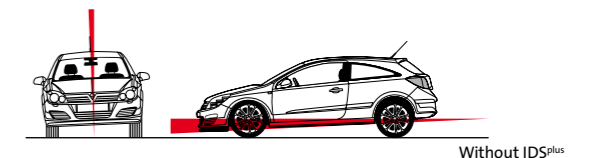
- Turbocharged 2.0 litre 147kW engine.
- 6-speed manual transmission enhances driving responsiveness.
- IDS^{plus} with Continuous Damping Control suspension (CDC).
- Electronic Stability Program (ESP) helps to control under-steer and over-steer, maintain grip and stabilise your Astra.
- 18" alloys underline the SRI Turbo's sporty performance. (16" steel spare)
- Sports body kit creates a dynamic road presence.
- Front fog lamps further add to the stunning sports styling.
- Full size curtain airbags for additional safety.
- Mondial leather-faced heatable sports seats with driver and front passenger lumbar support.
- Electronic climate control air conditioning.



Interactive Driving System Plus (IDS^{plus}) with Continuous Damping Control suspension (CDC)

As an Astra SRI Turbo driver you'll enjoy dynamic performance at its very best. IDS^{plus} gives you electronic control of the finely tuned sports suspension including Continuous Damping Control. CDC monitors the roll, pitch and yaw of the car, and changes the rate of damping on each wheel to optimise the handling performance, effectively stiffening the suspension, but selectively. This means the car will exhibit a reduced rate of roll and pitch, making it more responsive during direction changes and more settled during the brake/turn-in/acceleration transition when cornering.

Engaging the sport mode activates a special performance program by selecting firmer damper settings, increased throttle response and direct steering characteristics.





01

Accessories

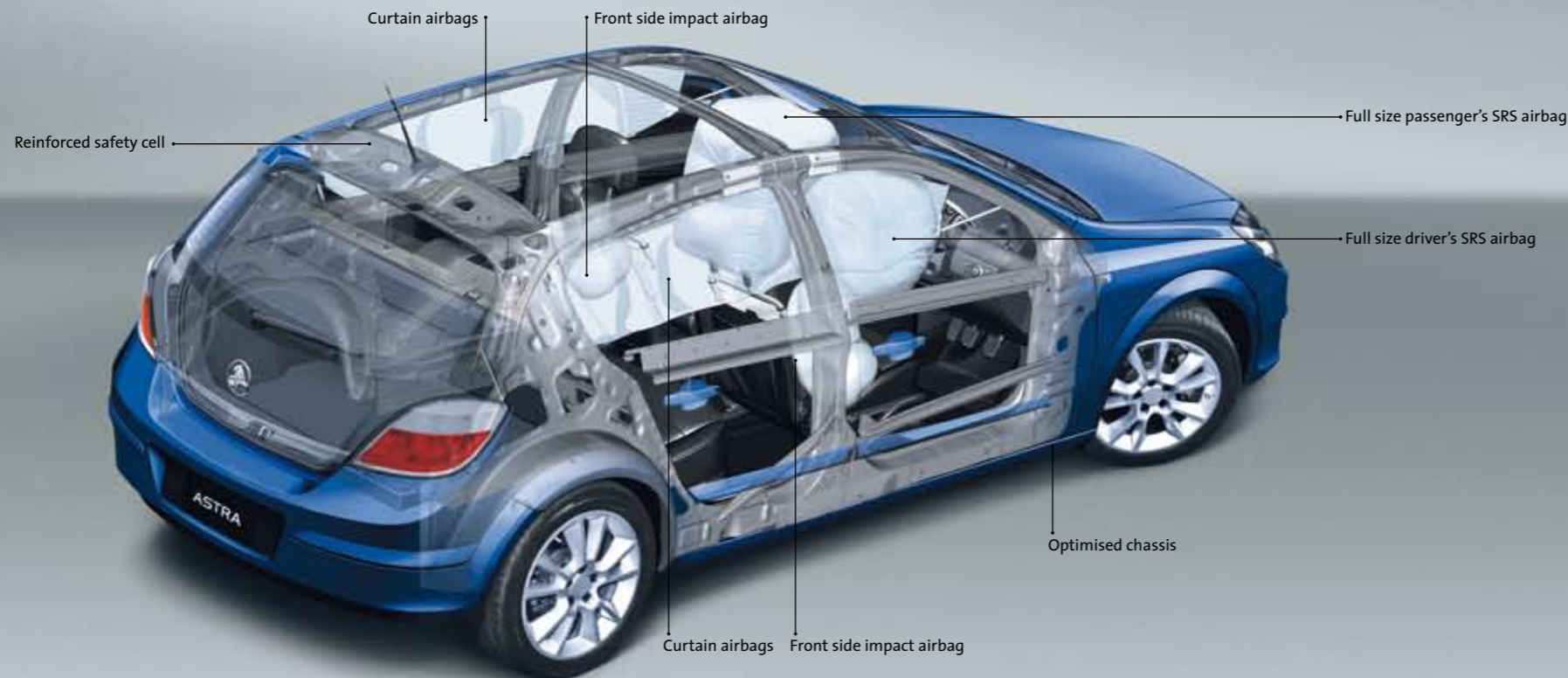
Make your new Astra even more individual. Choose from the extensive range of enhancements designed to express your unique sense of style. Explore all the possibilities at www.holden.com.au

Selected Accessories shown:

- 01 Astra 5 Door Hatch features rear roof spoiler,^ 18" x 7.5" alloy wheels,* lower body kit comprising front, rear and side skirts,^ and matt silver exterior door handles. Astra Coupe features 18" x 7.5" alloy wheels* and lower body kit comprising front, rear and side skirts^
- 02 18" x 7.5" five-spoke alloy wheels*
- 03 17" x 7" ten-spoke alloy wheels*
- 04 17" x 7" six twin-spoke alloy wheels*
- 05 Front spoiler,^ bonnet protector and headlamp guards
- 06 Weathershield
- 07 Rear parking sensors
- 08 Roof bars^ with scissor type ski carrier (skis not included)
- 09 Sunroof†
- 10 Carpet floor mats
- 11 Boot liner^
- 12 Boot organiser



^5 Dr Hatch and Coupe only *Tyres not included †5 Dr Hatch and Wagon only



Be composed. Take control. Astra elevates driving confidence to the next level.

The Astra range surrounds you with big car safety features. These include Brake Assist (BA), which provides maximum braking pressure, thereby helping to reduce stopping distances.

Safety and control are further enhanced by 4-wheel disc brakes and an advanced Anti-lock Braking System (ABS) which is standard on all models. Driver, front passenger and even front side impact airbags are also standard across the entire range.

Astra's dynamic design also includes a rigid body shell with advanced safety technology fully integrated throughout. Innovative features include pyrotechnic front seat belt pre-tensioners, that in certain serious frontal collisions take up seatbelt slack early, helping to minimise forward motion of front passengers.

Astra also responds to the demand for extra security. Innovations include an auto-lock function that re-locks doors after 5 minutes if the vehicle is not opened. Forward thinking technology also includes 'follow me home' headlamps, which when activated shine for 30 seconds once the ignition has been turned off, to help see you safely to your destination. Safety driven by innovation. The extended Astra range.

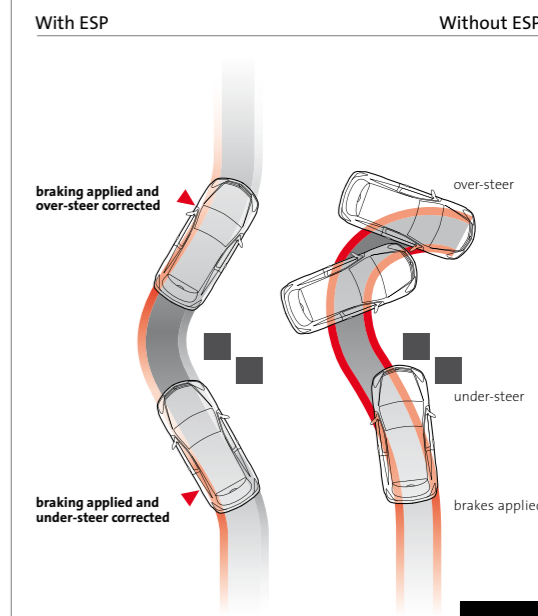
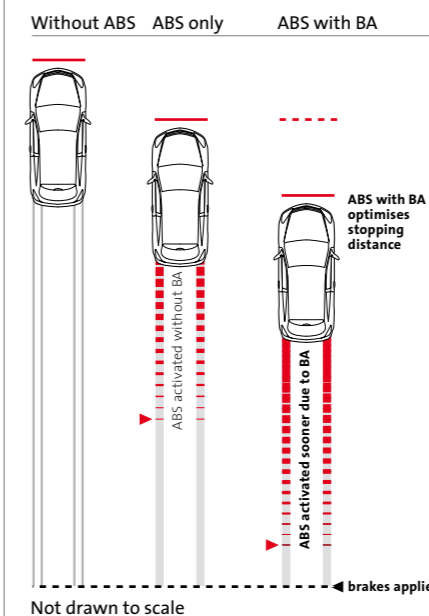
Reinforced safety cell and optimised chassis. The extremely rigid driver and passenger safety cell rides on a chassis optimised to deliver dynamic handling with maximum stability.

Supplemental Restraint System (SRS) incorporating 4 airbags. Full size driver and front passenger airbags* for improved protection in a frontal impact. Front side impact airbags are also standard on all models and curtain airbags in the CDX, CDTi and SRi Turbo models further help to protect passengers from the effects of a serious side impact. #

Anti-lock Braking System (ABS). Advanced ABS technology prevents the wheels from locking in emergency braking situations, allowing you to steer while braking heavily.

Brake Assist (BA). Astra's Brake Assist system provides maximum braking pressure when the brake pedal is pressed urgently, optimising stopping distance.

Electronic Stability Program (ESP). Electronic Stability Program further adds to the array of active safety features and your peace of mind. Intelligently responding to changing driving conditions, it controls both under-steer and over-steer, to maintain grip and safely stabilise the vehicle. Available only on CDTi and SRi Turbo.



* Driver and front passenger airbags will inflate only if the car is involved in certain severe frontal collisions. Airbags form part of the Supplemental Restraint System (SRS) as they assist, but do not replace safety offered by seatbelts.
Front side impact airbags will deploy and offer protection in some, but not all, severe side impacts.

Astra CDX 5 Dr Hatch shown with 17" x 7" accessory alloy wheels

Specifications

1.8 Litre ECOTEC Engine	Four cylinders. Double overhead camshafts operate four valves per cylinder. Sequential multipoint fuel injection. Distributorless direct ignition system. Electric cooling fan. Variable intake manifold. Coil-at-plug ignition. Cylinder selective knock control. Electronic Throttle Control. Aluminium cylinder head
1.9DTH Diesel ECOTEC Engine	Four cylinders. Double overhead camshafts operate four valves per cylinder. Latest generation common-rail direct injection. Electric cooling fan. Exhaust-gas turbocharger with variable turbine geometry and intercooling. Electronically controlled exhaust-gas recirculation with water cooling. Electronically powered swirl control. Electronic Throttle Control. Aluminium cylinder head
1.9DT Diesel ECOTEC Engine	Four cylinders. Single overhead camshaft which operates two valves per cylinder. Latest generation common-rail direct injection. Electric cooling fan. Exhaust-gas turbocharger with variable turbine geometry and intercooling. Electronically controlled exhaust-gas recirculation with water cooling. Electronic Throttle Control. Aluminium cylinder head
2.0 Litre Turbo ECOTEC Engine	Four cylinders. Double overhead camshafts operate four valves per cylinder. Sequential multipoint fuel injection. Electronic Spark Timing (EST) with Hall Sensor. Cylinder selective knock control and direct ignition system (DIS). Electric cooling fan. Variable intake manifold. Coil-at-plug ignition. Turbocharger with intercooler. Electronic Throttle Control. Aluminium cylinder head

Engine	1.8 Litre ECOTEC		1.9DTH and 1.9DT Diesel ECOTEC		2.0 Litre Turbo ECOTEC	
Bore x stroke (mm)	80.5 x 88.2		82.0 x 90.4		86.0 x 86.0	
Capacity (cc)	1796		1910		1998	
Compression ratio (:1)	10.5		DTH Manual: 17.5 DT Automatic: 18.0		8.8	
Power (ECE, kW)	90 @ 5600rpm 92 @ 5600rpm (PULP)		DTH Manual: 110 @ 4000rpm DT Automatic: 88 @ 3500-4000rpm		147 @ 5400rpm (PULP)	
Torque (ECE, Nm)	165 @ 3800rpm 170 @ 3800rpm (PULP)		DTH Manual: 320 @ 2000-2750rpm DT Automatic: 280 @ 2000-2750rpm		262 @ 4200rpm (PULP)	
Gear ratios (:1)	Manual	Auto	Manual	Auto	Manual	
	1st	3.73	2.81	3.82	4.15	3.82
	2nd	2.14	1.48	2.05	2.37	2.16
	3rd	1.41	1.00	1.30	1.56	1.48
	4th	1.12	0.74	0.96	1.16	1.07
	5th	0.89	–	0.74	0.86	0.88
	6th	–	–	0.61	0.69	0.74
	Axle	3.94	4.12	3.65	3.08	3.94
Recommended petrol	ULP		Diesel		PULP	
	Alternative	PULP for slightly higher performance		–	–	
Fuel economy* (L/100km)	Manual	Auto	Manual	Auto	Manual	
	Coupe	7.8	8.2	–	–	9.4
	5 Dr Hatch	7.8	8.2	6.0	7.4	–
	Wagon CD	7.8	8.3	–	–	–
	Wagon CDX	7.9	8.3	–	–	–
Petrol tank (L)	52		52		52	
Brakes	4 wheel disc brakes. Front ventilated		4 wheel disc brakes. Front ventilated		4 wheel disc brakes. Front ventilated	
Anti-lock Braking System (ABS)	4-channel		4-channel		4-channel	
Brake Assist (BA)	Standard		Standard		Standard	
Traction Control (TC)	–		Standard		Standard	
Electronic Stability Program (ESP)	–		Standard		Standard	
Suspension	Front	Independent. MacPherson strut. Decoupled strut mounts. Gas pressure dampers. Coil springs. Stabiliser bar.		Independent. MacPherson strut. Decoupled strut mounts. Gas pressure dampers. Coil springs. Stabiliser bar.		IDS ^{plus} Suspension. Independent. MacPherson struts. Decoupled strut mounts. Continuously Controlled Dampers. Coil springs. Stabiliser bar
	Rear	Compound torsion beam and twin trailing arms. Progressive rate miniblock double conical coil springs. Gas pressure dampers		Compound torsion beam and twin trailing arms. Progressive rate miniblock double conical coil springs. Gas pressure dampers		Compound torsion beam and twin trailing arms. Progressive rate miniblock double conical coil springs. Continuously Controlled Dampers.

Steering	Electro-hydraulic power rack and pinion				
Track (mm)	Front	CD: 1488	CDX, CDTi and SRI: 1484		
	Rear	CD: 1485	CDX, CDTi and SRI: 1481		
Turn circle (m)	Coupe	10.55 kerb to kerb			
	5 Dr Hatch	10.55 kerb to kerb			
	Wagon	10.85 kerb to kerb			
Wheelbase (mm)	Coupe	2614			
	5 Dr Hatch	2614			
	Wagon	2703			
Exterior dimensions (mm)	Length	Width (inc mirrors)	Width (excl mirrors)	Height	
	Coupe	4250	2033	1753	1435
	SRI Turbo Coupe	4290	2033	1753	1435
	5 Dr Hatch	4249	2033	1753	1460
	Wagon	4515	2033	1753	1500 (exc roof rails)
Interior dimensions (mm)	Leg	Shoulder	Head	Hip	
	Coupe front	1074	1370	960	1304
	Coupe rear	890	1338	929	1296
	5 Dr Hatch front	1067	1370	989	1315
	5 Dr Hatch rear	897	1342	973	1307
	Wagon front	1067	1370	989	1315
	Wagon rear	897	1342	993	1307
Cargo volume (L)	Rear seat up (under load compartment cover)		Rear seat down (to roof)		
	Coupe	302		1030	
	5 Dr Hatch	345		1265	
	Wagon	454		1549	
Kerb weight	CD	CDX	CDTi	SRI	
	Man / Auto	1243 / 1268	1274 / 1299	–	1401 / –
	(Est. kg inc. A/C and all fluids)	5 Dr Hatch	1249 / 1274	1266 / 1291	1372 / 1386
Towing (kg)	Coupe	630 / 1300			
	5 Dr Hatch	630 / 1300			
unbraked / braked trailer	Wagon	630 / 1250			
Service	3,000km (at no cost) inspection, then every 15,000km or 12 months, whichever comes first. Holden Dealer 'Tech 2' latest computerised analysis system available for engine management system. Spark plug replacement every 60,000km for 1.8L and 2.0L ECOTEC engines. Cartridgeless paper oil filter. Audible disc pad replacement warning				
	*Fuel consumption figures based on ADR 81/01 tests. These figures are provided to assist you in comparing the fuel consumption of Astra with other vehicles. The actual fuel consumption will depend, however, on many factors, including your driving habits, the prevailing conditions and your vehicle's equipment, condition and use.				

there are rewards to buying a Holden that go beyond the joy of driving one

Easy Purchase Options

Finance

SmartChoices, provided by GMAC Financial Services, is an array of automotive finance products designed to help the dream of driving a new Holden become a reality. Just select the product, term and payment structure that best suits your lifestyle and your Holden Dealer can provide more information.

Insurance

Holden Insurance offers a range of competitively priced insurance products, providing tailor-made protection, at whatever level of cover you need. For more information, call the Holden Insurance hotline on 1300 784 026.

Holden Leasing

Whatever the size of your fleet, Holden Leasing offers a range of flexible, value driven, specialist fleet leasing products. Years of experience means they can provide the best solution for you. Call Holden Leasing on 03 9693 0400 for more information.

Holden MasterCard

Holden MasterCard can assist you to get into a new Holden sooner. 10% of credit purchases on this card goes towards a Rebate of up to \$3,000 on your new Holden¹. That's a \$1 saving towards a new Holden for every \$10 spent. There are a range of extra features including up to 45 days interest free² on credit purchases and a competitive interest rate. Apply³ online at www.holden.com.au/mastercard or call Holden MasterCard's 24 hour help line 131 200.

Ownership Benefits

Holden Service

With over 300 Holden Dealers, Holden can supply an enviable level of customer care. Our Service Network is one of the largest in the country. Only Holden Dealership technicians have access to regular Holden factory training.

Holden Warranty

Every new Holden comes with a New Vehicle Warranty, covering your Holden for 3 years or 100,000 kilometres, whichever comes first. This factory backed warranty covers items including the engine, transmission, interior and exterior components. For support after that, a Holden Extended Warranty can be purchased for vehicles that have travelled less than 100,000 kilometres and prior to the vehicle being registered for 3 years from date of first registration. Refer to your owner's handbook or see your Holden Dealer for full terms, conditions and exclusions.

24 Hour Roadside Assistance

Provided for the first 3 years of your new Holden's life⁴. Holden Roadside Assistance is one of Australia's most comprehensive assistance packages with over 3000 Roadside Assistance patrols nationwide⁵. There to help with even the smallest service, the toll-free Roadside Assistance hotline is always open, 1800 817 100.

Club Holden

Owning a Holden has another great benefit – Club Holden. It's a free online service that provides exclusive vehicle and owner information tailored to your Holden. Register today at www.club.holden.com.au⁶

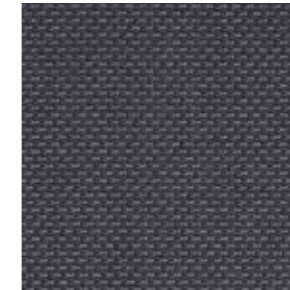
For more information contact Holden Customer Assistance on 1800 033 349 Monday to Friday 8am to 7pm or Saturday 9am to 1pm EST or visit www.holden.com.au

¹ A total of \$3000 in the form of Holden Card 'Core Rebate' (plus additional 'Bonus Rebate' accumulated via the Partner Program) accrued over a maximum of five years may be applied per eligible vehicle purchased. Vehicle sales for which a fleet allowance is paid are not eligible for Holden MasterCard Rebate. Earning and redemption of Rebate towards a new Holden is subject to the Holden Card Rebate Program Rules. ² The interest-free period applies where the card account is fully paid by the due date each month. ³ Applications are subject to Westpac's normal lending criteria. ⁴ From date of first registration. ⁵ In remote or sparsely populated areas you may experience delay in obtaining Roadside Assistance. Refer to the Roadside Assistance brochure in your glovebox for full terms and conditions of this service. ⁶ Most Holden vehicles from 1997 can be registered for Club Holden.

Interior trims



Alpha (Elba) cloth



Tabita (Elba) cloth



Mondial charcoal leather†

Exterior colours



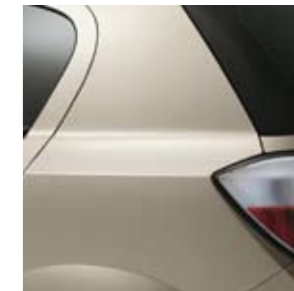
Casablanca White



Star Silver (metallic)



Moonland (metallic)



Pannacotta (metallic)



Black Sapphire (metallic)



Ultra Blue (metallic)

As these are printed colours and not actual samples, variations between those illustrated and actual paint/trim may occur. * Metallic paints may be an extra cost item and certain colours may not be available from time to time. Customers are encouraged to contact their Holden Dealer for current colour availability. † Leather faced seats. ‡ Dealer order only. Please allow additional time for delivery. O Optional.

	Exterior colours							Interior trims	
	Casablanca White	Star Silver*	Ultra Blue*	Black Sapphire*	Pannacotta*	Moonland*	Alpha (Elba)	Tabita (Elba)	Mondial leather †
Coupe									
CD	X#	X		X	X	X	X		
CDX	X#	X		X	X	X			X
SRi	X#	X		X					X
5 Dr Hatch									
CD	X	X	X	X	X	X	X		
CDX	X	X	X	X	X	X		X	O
CDTi	X	X	X	X	X	X		X	
Wagon									
CD	X	X	X	X	X	X	X		
CDX	X	X	X	X	X	X		X	

A word about this catalogue. We have tried to make this catalogue as comprehensive and factual as possible. However, since the time of printing some of the information you'll find here may have been updated. Also, some of the equipment shown or described through this catalogue may have been changed and / or is available at extra cost. Further, GM Holden Ltd, reserves the right to make changes at any time without notice, in prices, colours, materials, equipment and models. Your Holden Dealer has details, and before ordering, you should ask them to bring you up to date. No Holden Dealer or other person is authorised or permitted to give or make any statement, assertion or undertaking in relation to the quality, performance characteristics, descriptions or fitness for any purpose of any Holden product which is at variance with any written statement, assertion or undertaking on any of these subjects given or made by GM Holden Ltd ABN 84 006 893 232 in its published sales literature, and GM Holden Ltd does not accept any liability for any such unauthorised action. GM Holden Ltd has authorised dealers in many parts of Australia for the sale of service parts and the provision of service to owners of Holden's products. Every endeavour is made to ensure that such dealers carry adequate stocks of service parts, but GM Holden Ltd doesn't make any promise other than that contained in the New Vehicle Warranty given by GM Holden Ltd that such parts or service facilities will be available at any specific location or at any particular time. Express warranties offered for Holden products are subject to the conditions set out in all vehicle handbooks. Details also available from GM Holden Ltd on request. Copyright GM Holden Ltd. May 2006. emerystudio ASTAH0306 AD12047



HOLDEN