



MODEL D-2

Utilities



INTERNATIONAL HARVESTER COMPANY

OF AUSTRALIA PTY. LTD.
(INCORPORATED IN VICTORIA)

BRISBANE

SYDNEY

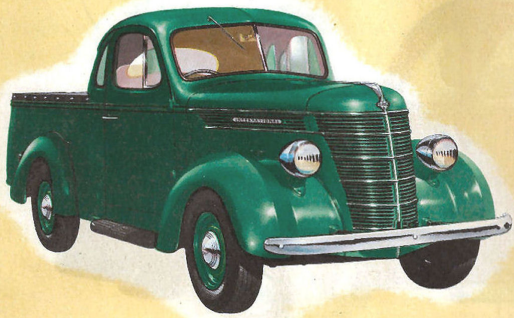
MELBOURNE

ADELAIDE

PERTH

ROBT. NETTLEFOLD PTY. LTD., HOBART, AGENTS FOR TASMANIA

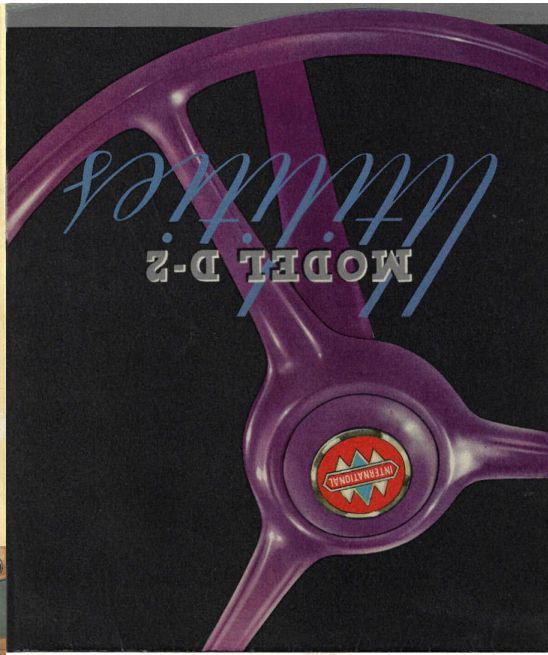
THE MOST PRACTICAL
VEHICLE
for out-of-town folk



Interior view of the roomy well-appointed driving compartment. Comfort, clear vision and safety are outstanding features in the new International Utility.

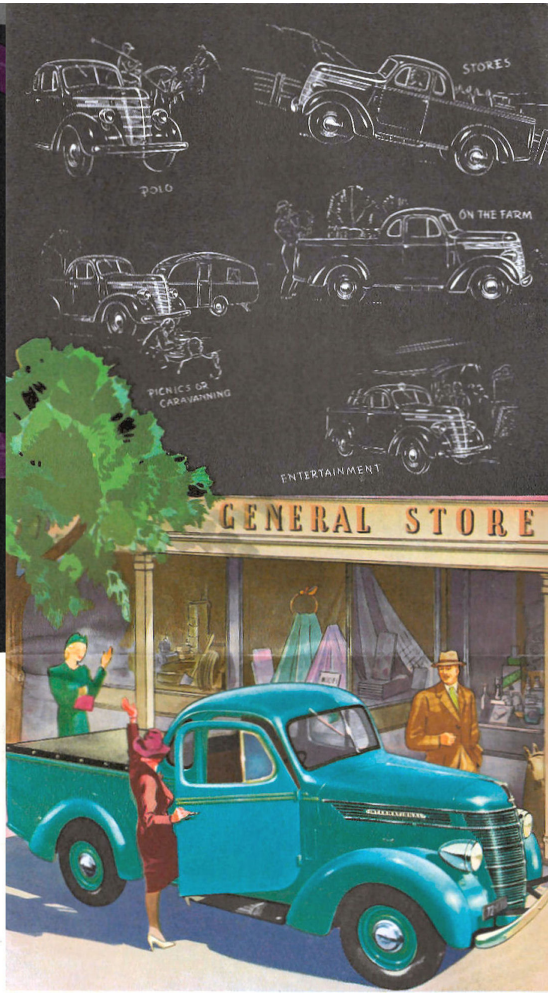
DESPITE the sweeping lines and outward appearance of splendour, this new Utility was designed from the wheels up for a long life of rugged endurance. Cloaked beneath the fluent body lines are engine and chassis features designed to ensure long life and economical operation. The sturdy rear axle, for example, is of rugged construction, built to "take it" in whatever type of work a

Utility is asked to perform. The deep-sectioned chassis frame is braced for outback conditions, and clutch and transmission have a safety factor well in excess of what is likely to be demanded. With the new International Utility, pride of possession springs not only from eye-appeal but from the knowledge of sheer dependability which only quality construction can ensure.



INTERNATIONAL HARVESTER COMPANY
OF AUSTRALIA PTY. LTD.
(INCORPORATED IN VICTORIA)
BRISBANE SYDNEY MELBOURNE PERTH ADELAIDE
ROBT. NETTLEFOLD PTY. LTD., HOBART, AGENTS FOR TASMANIA

ASSEMBLED IN AUSTRALIA



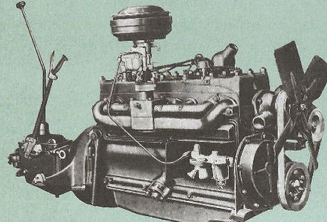
THE new International Utility is expressly designed and engineered to offer you outstanding beauty, sterling performance and a long life of low-cost, trouble-free operation. Powered by a virile, smooth-running, six-cylinder engine, this new International is a delight to drive, luxuriously comfortable, flexibly sprung, styled throughout in perfect taste and available in a variety of attractive colour schemes. Experienced drivers are keen on it—women handle it with ease. It will carry you and your goods with complete security and comfort anywhere, any time, for this new all-purpose Utility is the handiest thing on wheels.



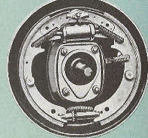


POWERFUL ECONOMICAL ENGINE

The International Model D-2 six-cylinder, L-head engine, clutch and transmission, showing the oil-bath type air cleaner, down-draught carburetor, mechanical fuel pump and manifold. Replaceable-shell, precision-type main and connecting-rod bearings; "DELUXE" oil filter and full-pressure lubrication throughout are but a few of the many features that assure long life and economical performance.

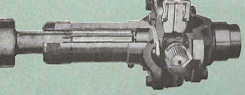


AT RIGHT: Latest type dual-seve hydraulic brake showing component adjustment giving full lining application on brake drum. Model D-2 brakes are noted for long life and effectiveness.

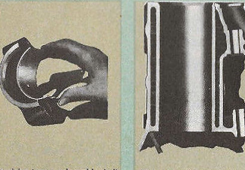


TRUE FULL-PRESSURE LUBRICATION: Lubrication is by full pressure to all main and connecting-rod bearings and to the piston pins through ribs-drilled connecting rods. With the floating type oil intake the oil is taken from near the top of the sump oil level instead of from the bottom where impurities settle.

One important factor in easy handling and safety of all tools is the robust compound lever type steering mechanism furnished.



The Model D-2 Utility is equipped with roller bearings, cast-iron type universal joints. They give extremely long life with a minimum amount of wear. All roller bearings are properly greased, prevent the entrance of dirt and dirt and effectively prevent rust and corrosion.



Water lockets extending the full length of the cylinders in the Model D-2 engine assure efficient cooling.

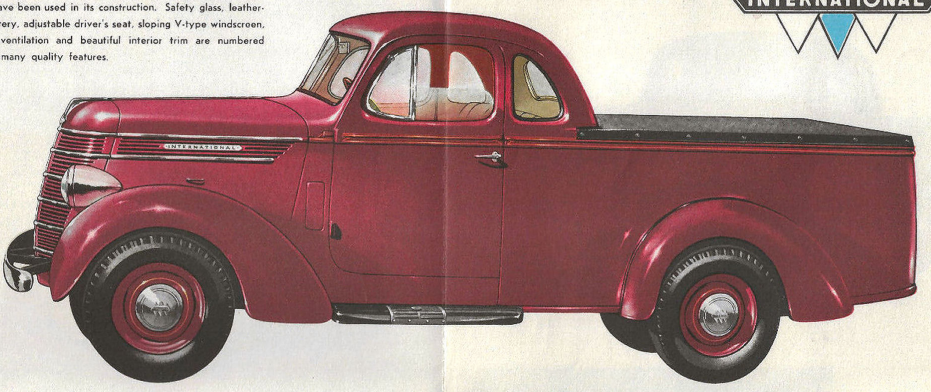
AT LEFT:

The final link in a high grade lubrication system is an oil filter which removes all carbon particles and prevents the formation of sludge. The D-2 engine is equipped with "DELUXE" oil filter which, as well as purifying the oil, cuts oil consumption in half.

DISTINCTIVE BEAUTY PLUS HIGHEST QUALITY CONSTRUCTION

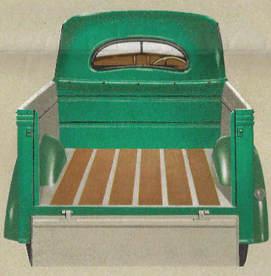
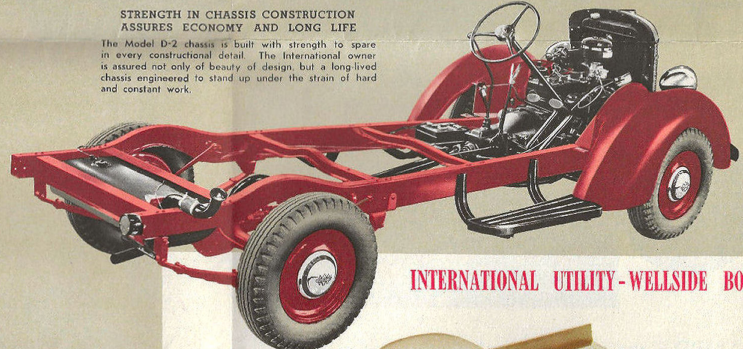


Beauty of line and good taste have been incorporated in the sweeping, streamlined styling of the new International Utility. In addition, materials conforming to only the highest automotive standards have been used in its construction. Safety glass, leatherhide upholstery, adjustable driver's seat, sloping V-type windshield, no-draught ventilation and beautiful interior trim are numbered among the many quality features.



STRENGTH IN CHASSIS CONSTRUCTION ASSURES ECONOMY AND LONG LIFE

The Model D-2 chassis is built with strength to spare in every constructional detail. The International owner is assured not only of beauty of design, but a long-lived chassis engineered to stand up under the strain of hard and constant work.



SPECIFICATIONS:

FRAME: Pressed steel channel, 11 1/2 in. wheelbase; depth, 4 1/2 in.; thickness, 1/2 in.; width of flange, 2 1/2 in.; width front, 25 1/2 in.; rear, 41 1/2 in.; 11 1/2 in. depth, 8 1/2 in.; thickness, 7/16 in.; width of flange, 2 1/2 in.; width front, 25 1/2 in.; rear, 41 1/2 in. Six reinforced cross members.

ENGINE: Six-cylinder, cast-iron block, L-head type; 3 1/2 in. bore, 4 1/2 in. stroke. Displacement, 112 cu. in. Compression ratio, 7.5 to 1. B.B.C. design, 24.3 h.p. maximum brake h.p. at 1,600 r.p.m., maximum torque, 145 lb.-ft. at 1,200 r.p.m. Four mechanical, replaceable-shell, precision-type main bearings; total projected area, 112.4 sq. in. 8 1/2 replaceable-shell, precision-type connecting rod bearings. Exhaustive steel inserts, "Deluxe" Oil Filter.

LUBRICATION: Full-pressure feed to all main, connecting-rod and piston pin bearings, camshaft, and timing chain. Gear type gear-driven oil pump. Oil capacity, 31 qt.

COOLING SYSTEM: Centrifugal pump circulation, in-and-out water pump fan and pump driven by V-type belt. Capacity, 3 gpm.

GENERATION: 6-watt belt-driven.

BATTERY: 6-watt, 15-plate.

STARTING MOTOR: 4-watt.

CARBURETOR: Down-draught type. Oil-bath type air cleaner.

FUEL SYSTEM: Fuel pump, 12 1/2 gal. tank at rear of frame. Fuel line.

CLUTCH: 16 1/2 in. steel plate, with vibration damper.

TRANSMISSION: 3 speeds forward, 1 reverse, selective, synchromesh type, mounted in unit with engine.

TRANSMISSION REDUCTION: First, 3.83 to 1; second, 1.481 to 1; third, 1 to 1; reverse, 1.977 to 1.

PROPELLER SHAFT: Large diameter steel, rubber.

UNIVERSAL JOINTS: All-steel, roller bearing, and dusting type.

FRONT AXLE: Drop front, 1 1/2 in., lead-traced steel drop springs. Fore and aft steering knuckle, tie rod at rear for protection.

REAR AXLE: Semi-floating, spiral-bevel gear type. Chrome molybdenum steel axle shafts. Pressed-steel, bolt-type housing. Differential coil spring-bearing axle Timken tapered roller.

AXLE REDUCTION: 4.19 to 1.

STEERING GEAR: Semi-irreversible cam-and-lever type.

BRAKES: Service, dual-wheel hydraulic, self-energizing, non-sponging, re-usable type. Hand brake wheels. All brakes fully adjusted.

SPRINGS: Semi-elliptic. Front, 11 x 36 in.; rear, 11 x 21 in. Four hydraulic shock absorbers.

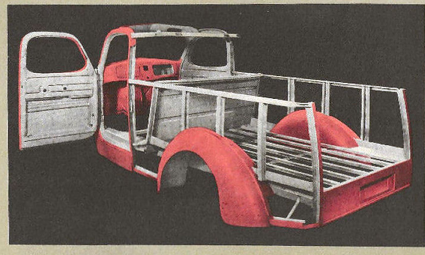
WHEELS AND TIRES: Pressed steel, 15 in. Disc type, equipped with 8.25-15 safety balloon tires. If special high clearance is required 19 in. wheels fitted with 8.25-18 safety balloon tires can be supplied on special equipment.

BODY SPECIFICATIONS: All steel construction throughout. V-type windshield, no-draught ventilation, safety glass, all round adjustable seat, leather side upholstery, sun flap and automatic windshield wiper, door light and lock, rear seat (optional), box, oval side vents, round probe type, removable highway, hard-wood floor, 1/2 in. thick, 1/2 in. wide, 1/2 in. deep.

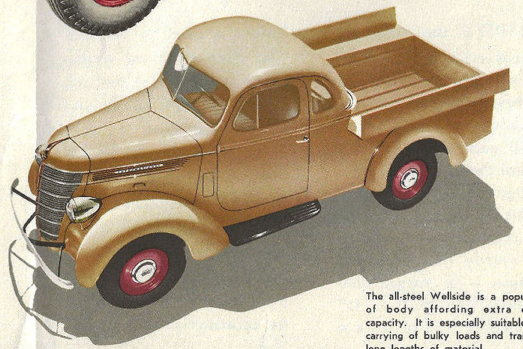
DIMENSIONS OF LOADING COMPARTMENT: Floor length, 78 in.; width inside body, 38 in.; width inside wheel wells, 41 in.; height from floor to top of sides, 25 in.; tailgate opening, 51 in.

The goods-carrying compartment is of excellent capacity with a hardwood floor laid between the steel longitudinal members. High-grade and practical construction.

INTERNATIONAL UTILITY-WELLSIDE BODY



Safe bodywork must, of necessity, be strong bodywork. The all-steel frame-body illustrated here is the foundation of a safe, silent and durable body.



The all-steel Wellside is a popular type of body affording extra carrying capacity. It is especially suitable for the carrying of bulky loads and transport of long lengths of material.