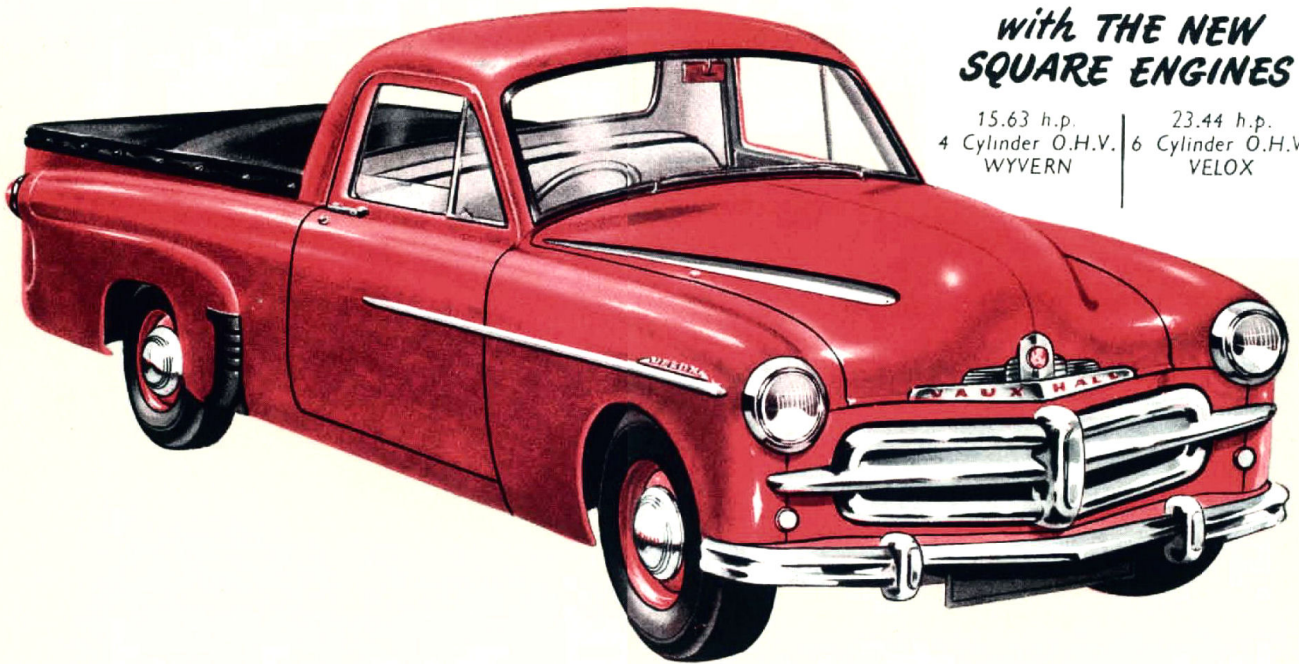


They're new!

1. New styling . . .
2. New comfort . . .
3. New performance . . .
4. New economy . . .



*with THE NEW
SQUARE ENGINES*

15.63 h.p.	23.44 h.p.
4 Cylinder O.H.V.	6 Cylinder O.H.V.
WYVERN	VELOX

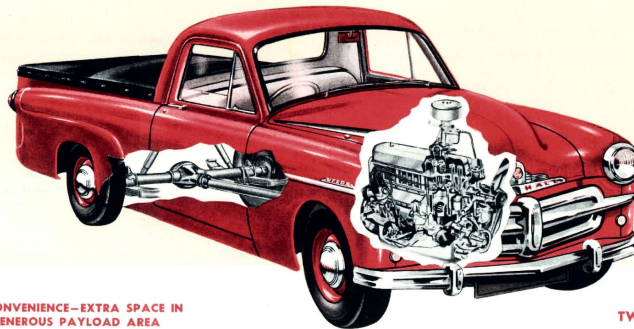
*Two
New* **VAUXHALL 10 cwt. COUPE-UTILITIES**

Look at these big new engineering features! See why you get more value with Vauxhall!

STURDY REAR-END ASSEMBLY AND 16 INCH WHEELS HELP TAKE A FULL 10 CWT. LOAD WITHOUT STRAIN

There's scientifically designed inbuilt strength in the rear-end assembly and axle-housing of these new Coupe-Utilities. Tapered roller-bearings in the differential and pinion, and extra strong axles are typical Vauxhall engineering features designed to give you maximum strength with better service. In

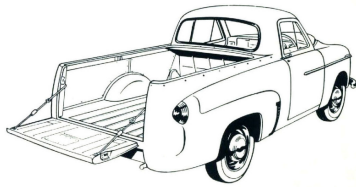
addition the rear axle ratios are matched to the individual horsepower ratings of each engine to give you brilliant performance and outstanding petrol economy. Angle-set shock absorbers and semi-elliptical rear springing keep the riding smooth whatever the load or road.



TWO NEW ENGINES THAT GIVE YOU EXTRA POWER AND MORE PUNCH WITH HEAVY LOADS

These two new square engines in the new Vauxhall Coupe-Utilities give you plenty of extra power to handle 10 cwt. loads on all kinds of roads. Because these are Square Engines (in fact, they are slightly over-square), piston speeds are reduced. You get higher maximum speeds with reduced engine wear and greatly im-

proved petrol economy. The new Vauxhall cylinder boring technique gives you longer cylinder life. These new engines incorporate all the famous Vauxhall features, including—overhead valves, 6-phase carburation, positive lubrication of cylinder bores, double thermostatic cooling control.



EXTRA CONVENIENCE—EXTRA SPACE IN THE GENEROUS PAYLOAD AREA

Built on a properly engineered chassis frame, everything about the carrying-section of these new coupe-utilities is designed to take the load and give maximum space and convenience.

Internal Measurements

Length of floor, 79¹/₂ in. Length of floor with tail board in horizontal position, 101¹/₂ in. Maximum width at front at top, 52¹/₂ in. Maximum width at front on floor, 57¹/₂ in. Width between wheel arches, 42¹/₂ in. Tail gate opening, 43¹/₂ in.

TWO DIFFERENT ENGINES DESIGNED FOR YOUR INDIVIDUAL NEEDS

15.63 h.p. OHV 4 Cyl. WYVERN

Swift acceleration, fast pick-up in traffic and good top-gear performance . . . allied with outstanding petrol economy, make this 4 cylinder Wyvern Coupe-Utility a most attractive proposition. This lively performer cruises between 45 and 50 miles per hour.

23.44 h.p. OHV 6 Cyl. VELOX

Here's the famous Velox square engine that gives you high speed cruising (between 50 and 55 m.p.h.) at lower engine revolutions. It's an engine that will work long and hard—an engine that holds an added rush of power in reserve to deal with emergencies . . . with flashing top-gear performance and worthwhile economy.

Check these specifications—compare! You'll see that it's Vauxhall Coupe-Utility for you . . .

GENERAL DIMENSIONS: Wheelbase, 103 in.; overall length, 175-25/32 in.; overall width, 67-3/32 in.; width over rear fenders, 66-11/16 in.; centreline of rear axle to end of body, 43 in.; floor height—loaded, 22-15/16 in.; clearance, 9-29/32 in.

BODY DIMENSIONS—Both Models: Coupe Cabin—Leg room, 42-9/16 in.; hip room, 56 5/8 in.; head room, 35 3/4 in.; shoulder room, 49 7/8 in.

FRAME: Type, Cruciform—pressed steel channel side members—box section.

Wheels: Size, 4.50E—16 in.
Tyres: Size, 5.50—16 x 6 ply. Pressure lbs./sq. in.—front, 26 ; rear, 26 unladen; 31 for average loading; 36 fully laden.

BODY: Steel three-passenger type coupe, mounted on chassis frame with tonneau area for 10 cwt.

INTERIOR AND FITTINGS: Seat mounted on roller runners. Adjustable for forward and backward positioning. Both seat and squab built on snake wire springs. Parcel shelf at seat-back. Seat and squab trimmed with PVC, door, cowl trims and headlining of imitation leather. Rubber floor mat and 2 sun visors are supplied.

ENGINE:

	Wyvern	Velox
No. of Cylinders	4 OHV	6 OHV
(In-line type)		

Bore and Stroke (ins.)	3.125 x 3.00	3.125 x 3.00
Piston displacement (cu. ins.)	92	138
Compression Ratio	6.4:1	6.4:1
Max. brake h.p.	40 at 4000 r.p.m.	64 at 4000 r.p.m.
Max. Torque lbs. ft.	71 at 2000	108 at 1200

Wyvern, Velox: Push-rod operated overhead valves in a detachable head. Gear box built as a unit with engine; complete assembly mounted in frame at three points, all on rubber insulators.

Battery (Both Models): Voltage, 12; number of plates, 7; capacity (at 20 hour rate), 44 amps.

LUBRICATION SYSTEM: High-pressure system with submerged gear type pump. Oil pump intake protected by gauze strainer. Deep steel pressing sump. Crankcase ventilation.

FUEL SYSTEM: By AC mechanical pump. Zenith carburettor fitted with accelerator pump and part throttle economy valve. Air intake fitted with combined AC air filter, silencer and flame arrester. Fuel tank capacity, 9 1/2 Imp. gallons.

COOLING SYSTEM: Velox: Pressurised system operating at 3/4 to 4/4 lb. per square in. raising boiling point of water to 221-224°F. Special radiator cap with pressure and vacuum spring release valves. Centrifugal pump, circulation by means of cored slots and nozzles. Thermostatic control. Capacity of system—17 1/2 Imp. pints.

Wyvern: Orthodox system. Centrifugal pump. Circulation from full-length cylinder jackets to head through cored slots. Thermostatic control. Capacity of system, 12 Imp. pints.

CLUTCH: Single dry plate. Diameter of friction facings—Wyvern, 7 1/4 in.; Velox, 8 in.

GEAR BOX: Three forward speeds and one reverse. Vauxhall controlled synchromesh on top and second speeds. All gears of helical tooth form. Horizontal gear control lever mounted on steering column. Gear box ratios: Wyvern—First, 3.434 to 1; second, 1.638 to 1; top, direct; reverse, 3.434 to 1. Velox—First, 3.103 to 1; second, 1.630 to 1; top, direct; reverse, 3.103 to 1.

DRIVE LINE: Single open propeller shaft; Hardy-Spicer needle roller bearing universal joints.

REAR AXLE: Semi-floating; hypoid final drive. Two-pinion differential; taper roller bearings. Induction hardened axle shafts, not interchangeable side for side. Ratios: Wyvern, 4.625 to 1; Velox, 4.125 to 1.

ELECTRICAL SYSTEM: 12 v. Generator output regulated by Compensated Voltage Control system. Distributor incorporates automatic centrifugal timing control and vacuum advance unit. Ignition coil. Sealed front pre-focus double-dipping headlamps, parking lamps mounted below headlamps. Foot operated dipper switch. Interior lamp. Four instrument panel lamps with rheostat control; 12 v. Battery.

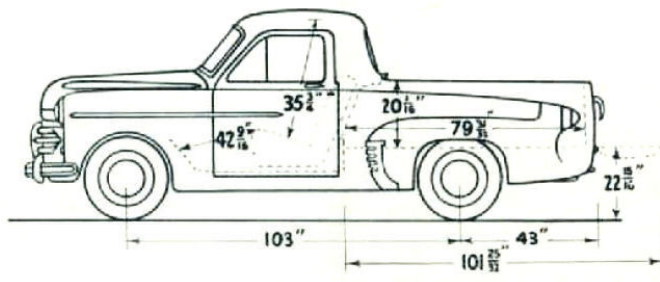
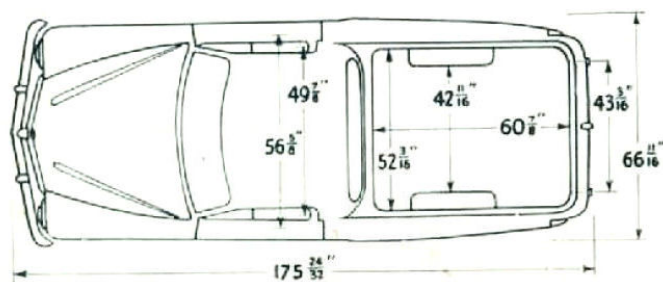
FRONT SUSPENSION: Independent front wheel suspension of coil spring and wish-bone type. Complete front assembly bolted, with rubber insulation, to underside of frame forward extension. Stabilizer bar mounted across vehicle in front of suspension unit. Double-acting telescopic shock absorber centrally mounted within each coil spring.

REAR SUSPENSION: Long, semi-elliptic under-slung rear springs of wide leaf type (2 1/4 in. wide), shackled at rear end. Spring eyes and shackles fitted with rubber bushes. Direct double-acting telescopic shock absorbers mounted with inward inclination, between U-bolt clamp plates on rear axle and brackets attached to the frame.

BRAKES: Foot brake, Vauxhall-designed brakes with Lockheed hydraulic operation. Total lining area, 100.6 sq. in. Handbrake lever located at right side of driver's seat; operates rear brakes only by separate mechanical cable system.

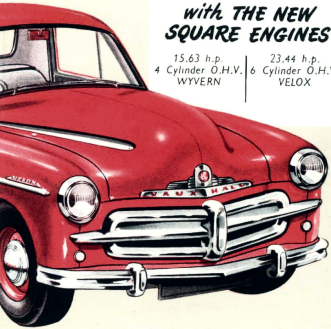
STEERING: Worm and ball bearing mounted peg follower type. Steering wheel diameter, 17 in. Steering gear ratio, 15.75 to 1. Turning circle, 35 ft.

The right is reserved to alter specifications and/or equipment without previous notice.



GENERAL MOTORS-HOLDEN'S LTD., Brisbane, Sydney, Melbourne, Adelaide, Perth

- 1. New styling . . .
- 2. New comfort . . .
- 3. New performance . . .
- 4. New economy . . .



WITH THE NEW SQUARE ENGINES

15.63 h.p. 4 Cylinder O.H.V. WYVERN
23.44 h.p. 6 Cylinder O.H.V. VELOX

10 cwt. COUPE-UTILITIES

Check these specifications—compare! You'll see that it's Vauxhall Coupe-Utility for you . . .

GENERAL DIMENSIONS: Wheelbase, 102 in.; overall length, 175.25/32 in.; overall width, 66-11/16 in.; centreline of rear axle to end of body, 43 in.; floor height—loaded, 22.15/16 in.; clearance, 9.29/32 in.

BODY DIMENSIONS—Both Models: Coupe Cabin—Leg room, 42.9/16 in.; hip room, 55 1/2 in.; head room, 35 1/2 in.; trapezoidal room, 49 1/2 in.

FRAME: Type: Cradle—open steel channel. Wheelbase, 102 in.

Tires: Size, 2.30-16 x 4 ply. Pressure 31 for average loading; 35 fully loaded.

BODY: Sheet three-passenger type coupe, mounted on chassis frame with forward over for 10 cwt.

INTERIOR AND FITTINGS: Seat mounted on roller runners. Adjustable for forward and backward reclining. Both seat and backrest built on weak wire springs. Parcel shelf at rear-back. Seat and backrest trimmed with PVC, door, cowl trim, and headlinings of imitation leather. Rubber floor mat and 2 seat covers are supplied.

ENGINE: WYVERN 4 CYL. VELOX 6 CYL. (In-line type)

Size and Stroke (ins.)	3.125	3.125
Compression Ratio	9.2	13.8
Max. torque ft.-lb.	42 at 2000	64 at 4000
Max. torque ft.-lb. at 2000	108 of 1200	

WYVERN: Pulverized open-end head valves in a detachable head. Gear box built as a unit with engine complete assembly mounted in frame of three gears, all on rubber dampers.

VELOX: Reduction hardened axle shafts, not interchangeable side for side. Ratios: WYVERN, 4.62 to 1; VELOX, 4.12 to 1.

ELECTRICAL SYSTEM: 12 v. Generator output regulated by "Compensated" Voltage Control system. Distributor incorporates automatic centrifugal timing control and vacuum advance unit. Ignition coil. Sealed front operated distributor. Interior parking lamps mounted below headlamps. Front operated door, courtesy, interior lamps. Four front-end control lamps with rheostat control. 12 v. Battery.

FRONT SUSPENSION: Independent front wheel suspension of coil spring and wishbone type. Complete front assembly ballbed, with rubber insulation, to under side of frame, forward extension. Stabilizer bar mounted across vehicle in front of suspension unit. Double-acting telescopic shock absorber centrally mounted within each coil spring.

REAR SUSPENSION: Long, centrifugal pendulum rear springs of wide leaf type (2 1/2 in. wide), shackled at rear end. Spring eye and shackles fitted with rubber bushes. Direct double-acting telescopic shock absorber mounted with rear end in alignment between U-bolts, same shackle on rear axle and brackets attached to the frame.

BRAKES: Foot brake, Vauxhall-designed brakes with Lockheed hydraulic operation. Total lining area, 100.6 sq. in. Handbrake lever located on right side of driver's seat, operates rear brakes only by separate mechanical cable system.

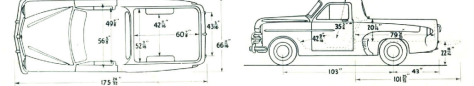
STEERING: Worm and ball bearing mounted, long shifter type. Steering wheel diameter, 17 in. Steering gear ratio, 12.75 to 1, turning circle, 28.5 ft. The right is reserved to other specifications or equipment without previous notice.

CLUTCH: Single dry plate. Diameter of friction disc—WYVERN, 7 1/4 in.; VELOX, 8 1/4 in.

GEAR BOX: Three forward speeds and one reverse, Vauxhall controlled synchronism on top and second speeds. All gears of helical tooth form. Horizontal gear control lever mounted on steering column. Gear box ratios: WYVERN—First, 3.434 to 1; Second, 1.628 to 1; Top, direct, reverse, 1.244 to 1. VELOX—First, 3.103 to 1; Second, 1.650 to 1; Top, direct, reverse, 1.203 to 1.

DRIVE LINE: Single open propeller shaft, Hotchkiss rear axle, roller bearing universal joints.

REAR AXLE: Semi-floating, hypoid final drive. Two-planet differential; taper roller bearings.



GENERAL MOTORS-HOLDEN'S LTD., Brisbane, Sydney, Melbourne, Adelaide, Perth

POSITIVE OWNER SERVICE

General Motors-Holden's Warranty protects you against defective workmanship or materials for 90 days or the first 4000 operating miles. It also entitles you to two thorough inspections without charge.

GMH EXPERT SERVICE AND GENUINE SPARE PARTS THROUGHOUT AUSTRALIA

Vauxhall is backed by the expert service of trained mechanics and a genuine spare parts service is available from your nearest Vauxhall dealer.

GMAC CONFIDENTIAL HIRE-PURCHASE PLAN

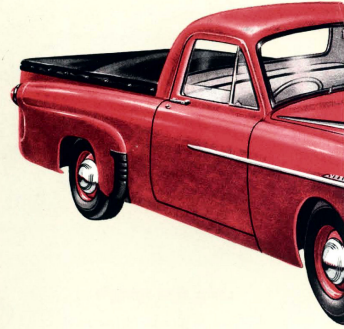
Convenient Hire-Purchase terms are available through General Motors' own finance Company. Ask your dealer for full details of the GMAC plan.

GMH "AIR CHIEF" CAR RADIO

You'll get "miles of listening pleasure" as you drive with the built-for-Vauxhall GMH "Air Chief" Car Radio. Your dealer will gladly give a demonstration.

Copyright, all rights reserved Printed in Australia

They're new!



Two New VAUXHALL

Here's the famous Vauxhall square engine that gives you high speed cruising between 50 and 55 m.p.h. at lower engine revolutions. It's an engine that will work hard and reserve to deal with emergencies . . . with flashing top-gear performance and worthwhile economy.

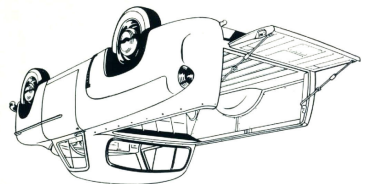
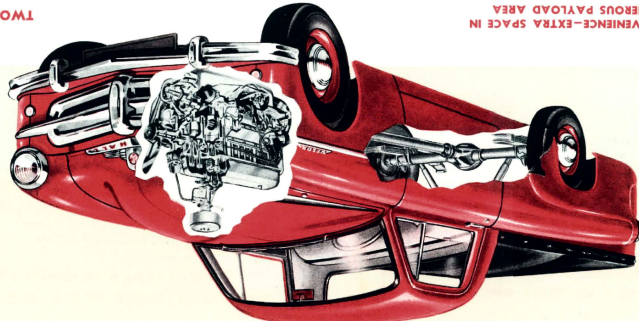
23.44 h.p. OHV 6 Cyl. VELOX

TWO DIFFERENT ENGINES DESIGNED FOR YOUR INDIVIDUAL NEEDS

These two new square engines proved period economy. The new Vauxhall coupe-utility gives you longer cylinder life. These new engines incorporate all the features Vauxhall features, including—overhead valves, 6-phase carburation, positive lubrication of cylinder bores, double-thermostatic cooling control. engine wear and greatly improved speeds with reduced consumption. You get higher maximum speeds, piston speeds are reduced, they are slightly over-square. Vauxhall features, including—overhead valves, 6-phase carburation, positive lubrication of cylinder bores, double-thermostatic cooling control.

Switch acceleration, has pick-up in traffic and good top gear performance . . . allied with outstanding period economy, makes this 6 cylinder Vauxhall Coupe-Utility the most attractive proposition. Its heavy performance cruses between 45 and 50 miles per hour.

15.63 h.p. OHV 4 Cyl. WYVERN



There's scientifically designed additional rear axle ratios are matched to the individual horsepower ratings of each engine to give you brilliant performance and outstanding petrol economy. Angled shock absorbers and semi-elliptical rear springs keep the riding smooth whatever the load or strength with better service in road.

STURDY REAR-END ASSEMBLY AND 16 INCH WHEELS HELP TAKE A FULL 10 CWT. LOAD WITHOUT STRAIN

Internal Length in. Maximum width at front on floor with tail board in horizontal position, 101 1/2 in. Max. wheel arches, 42 1/2 in. Width between front floor, 37 1/2 in. Width between rear floor, 29 1/2 in. Length of floor, 79 1/2 in.

EXTRA CONVENIENCE—EXTRA SPACE IN THE GENEROUS PAYLOAD AREA

Built on a properly engineered chassis frame, everything designed to take the load and give maximum space and convenience.

Look at these big new engineering features! See why you get more value with Vauxhall!

**PRESSED STEEL
OUTER PANELS**

Outer panels in the load compartment are of pressed steel—inner Masonite panels are removable. Hardwood floor is fitted with steel skid strips—to ensure long and satisfactory wear.

More than just a utility..! A new standard of practical comfort and engineering achievement...

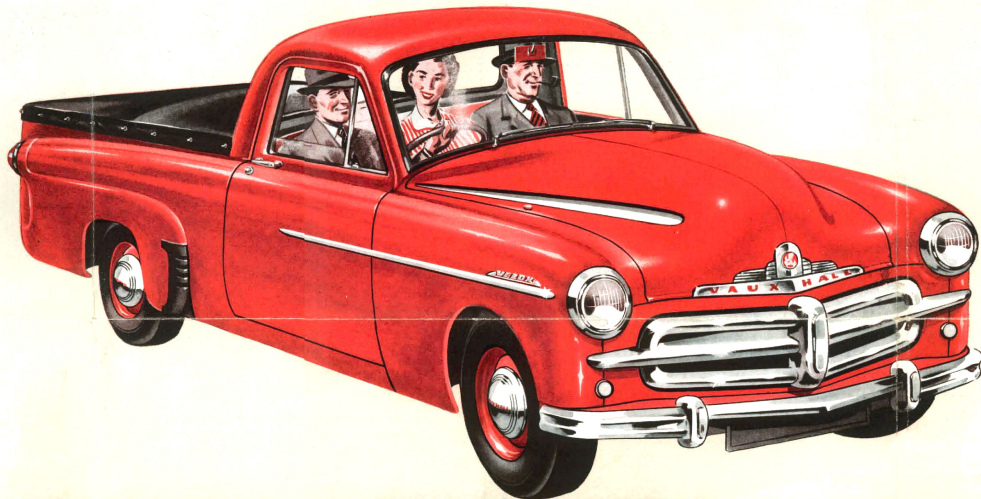


**INDEPENDENT
FRONT SUSPENSION**

You get "riding-on-velvet" ease and comfort whether your load is light or heavy on the roughest road with the acclaimed Vauxhall "wish-bone" independent front wheel suspension.

LARGE REAR WINDOW

Designed to give the driver maximum rear vision and to harmonise with the spaciousness of the interior, this sealed rear-window is curved to match the contours of the coupe cabin area.



**FAMOUS VAUXHALL
GOOD LOOKS**

These new Coupe-Utilities combine the same graceful streamlined appearance of the Vauxhall cars with the practical carrying convenience of an all-purpose utility.

**DOORS CONTROLLED BY
SPRING LOADED DOOR CHECKS**

When the doors are open, they stay open. They are individually controlled by spring-loaded door checks. This is another comfort feature that characterises these two outstanding new models.

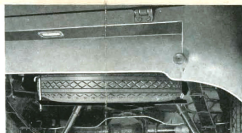
**FULL WIDTH
SAFETY GLASS WINDSHIELD**

Fixed-type, full-width curved one-piece windscreen gives maximum unobstructed view of the road to both driver and passengers... adds to model's streamlined appearance.



**HANDY PARCEL SHELF
AT SEAT-BACK**

No need to lose small packages down the side of the seat—the handy shelf at the back of the cabin takes care of all small packets and parcels.



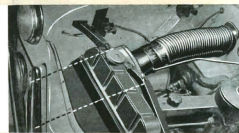
**SPARE WHEEL
CRADLED UNDER BODY**

Accessible but not obtrusive, the spare wheel is kept securely in its cradle under the rear of the load area. It can easily and quickly be removed in an emergency.



**NEW SLIDE LOCKING
PUSH-BUTTON
DOORS**

Inside chrome-plated handles have push-button cam type door-lock releases located below each handle. Slide-type safety catches are located adjacent to each handle.



**ADJUSTABLE AIR-STREAM
CONDITIONING**

A big, adjustable air-flow duct, which is controlled from the main instrument panel, provides a variable flow of fresh air to increase passenger-comfort.



**PASSENGER CAR COMFORT
IN COUPE-INTERIOR**

Three people can relax in passenger-car comfort! Features include adjustable seating, accessible hand-brake at driver's seat-side. Squab tilts forward for access to rear tool compartment.



**SCIENTIFICALLY STREAMLINED
INSTRUMENT PANEL**

Scientifically grouped instrument dials give maximum visibility and a streamlined, graceful appearance. Manual controls are located together below main panel.