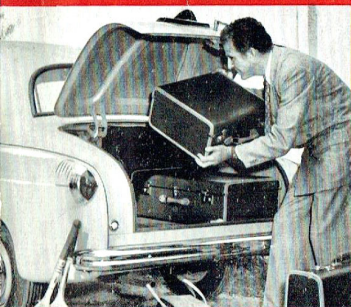




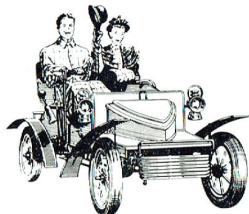
VAUXHALL WYVERN

5-6 Passenger 4-door Saloon - Vagabond Sports Tourer



Wyvern offers all the features you want in a car . . . without high running costs

In 1903, this 5 h.p. single-cylinder horseless carriage established the Vauxhall name. Performance and reliability were remarkable for its period, and, like the Vauxhalls of our own day, it offered exceptional motoring value.



To-day, the Vauxhall Wyvern offers the keenest value in the medium-price field. A true "happy-medium" car, Wyvern combines to perfection graceful styling with traditional Vauxhall engineering quality; low first cost with outstanding operating economy.

The interior design of the Wyvern is most appealing, with headlining, trim and carpeting harmonizing with the richly-finished upholstery and toned to complement the exterior colour scheme.

Generous interior measurements provide ample room to stretch the legs and enjoy

utmost comfort without crowding, for 5 or even 6 people.

On the road, the 4 cylinder 15.6 h.p. overhead valve Wyvern engine gives an excellent performance with brisk acceleration and pleasing top-gear flexibility. "Square" engine design provides high performance without high revs. . . extra life . . . extra power with reduced wear.

Cruising smoothly in the Wyvern with its "big car" ease of handling is a delightful motoring experience.

You'll appreciate the safe, sure way Wyvern tracks around curves—its balanced suspension ironing smooth the rough stretches—a sure sign that the experience and forethought of Vauxhall's over 50 years of engineering leadership went into the design of this fine car.

Extra luggage room, trouble-saving engine accessibility, all-round horizon-wide vision . . . these are just a few of the many "big-car" advantages you get with Wyvern.

Whether your choice is the handsome Wyvern saloon or the smart "Vagabond" sports tourer . . . Wyvern leads the medium-price field with Vauxhall's greatest value in over 50 years.

White wall tyres are available as an optional extra on both Wyvern models.

Advantages *prove* Wyvern's value-for-money!
Sold and Serviced by General Motors-Holden's Limited.

Low-cost Spare Parts and factory-trained service available from General Motors-Holden's Limited dealers throughout Australia.

Three-speed synchromesh gear box for driving ease.

Engine so easy to get at—quickly accessible for service or repairs.

Battery and oil dipstick high up under the bonnet for quick checking.

Outstanding economy without sacrificing flexibility and performance.

Wide, full-opening doors let passengers get in and out with the least trouble.

More fun to the Gallon . . .

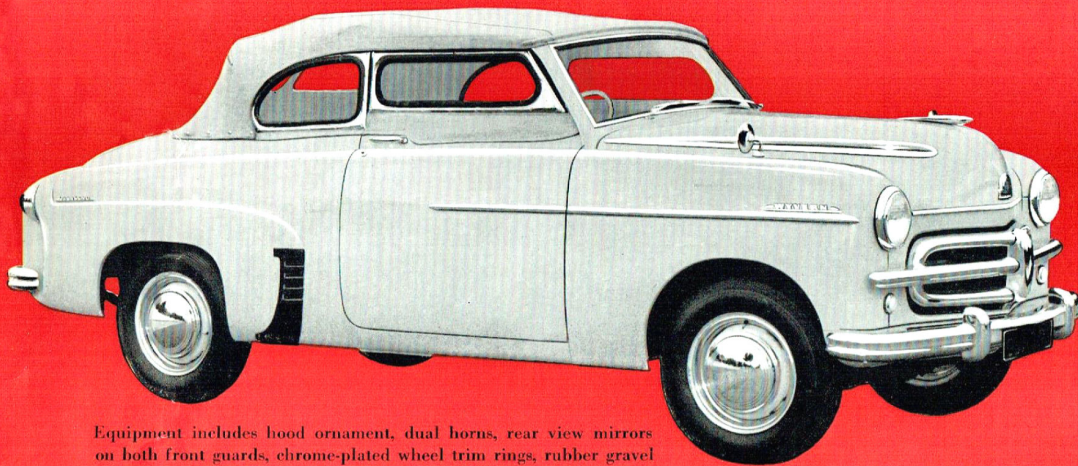
The streamstyled beauty of the Wyvern "Vagabond" is just the beginning of the pleasure you'll know when you drive this friendly 5-6 seater sports tourer. The Wyvern "Vagabond" Sports is the perfect companion for a picnic or a run in the country.

The handling qualities of the Vagabond will delight the sports-car enthusiast. Hard driven into sweeping bends or sharp elbows, the sure-footed Vauxhall suspension keeps body-sway to a minimum . . . you'll recapture the thrill of motoring at its exciting best in a car that eagerly responds to every whim.

The thrifty 15.63 h.p. overhead valve engine has power to spare, while the steering column gear change is positive and sure for deft hands-on-the-wheel changes.

On rainy days or cool, the "Vagabond" with hood up and safety-glass side windows in place is as comfortable and warm as a saloon. Most important, too, when the hood is up, all-round visibility is not neglected.

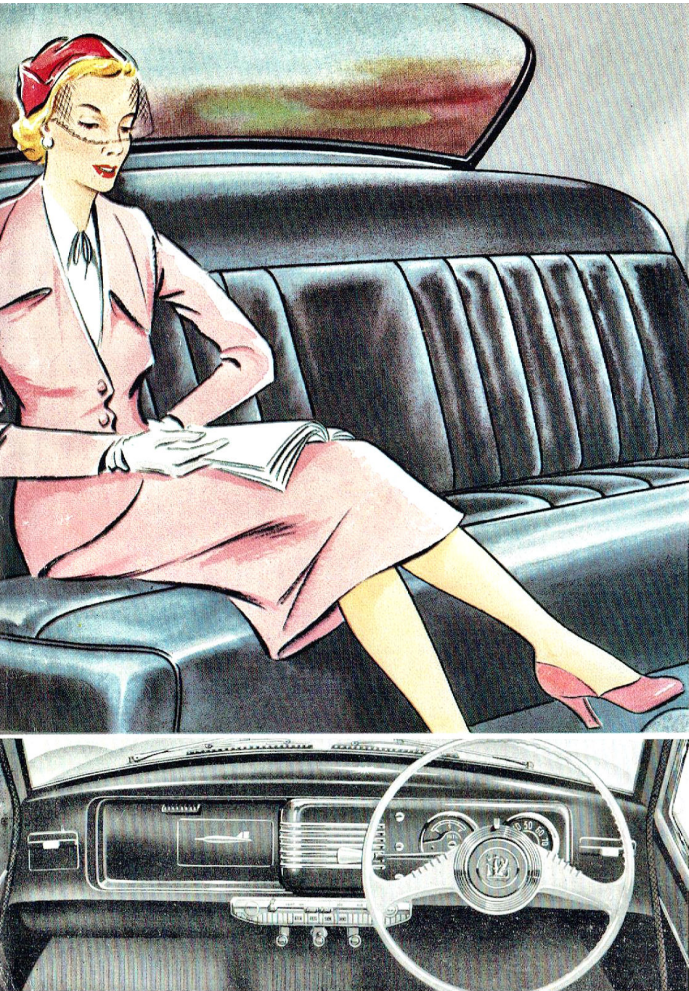
Every way you look at it, you can't beat the Wyvern "Vagabond" for value.



Equipment includes hood ornament, dual horns, rear view mirrors on both front guards, chrome-plated wheel trim rings, rubber gravel shields and many other "grace" touches inside and out.

the sparkling Wyvern "Vagabond" Sports Tourer





Wyvern offers full 5-6 Seater Comfort . . . with pleasing interior detail

Who would ever guess that Wyvern was an economy car? There's never a hint of austerity in the deeply cushioned, meticulously finished interior. Vauxhall Wyvern is upholstered throughout in richly toned "P.V.C." for scuff-free long life, with toning headlining and interior trimming a pleasing compliment to your good taste. Long-life Z-type springs—which give added comfort and reduce sagging—support both front and rear seats.

In the quietly luxurious interior, there's room to stretch on the long trips—for 5—even 6 passengers. Here you will find generous head room, hip room, leg room and knee room hitherto

unknown in a medium-price car. Large area windows provide clear, uninterrupted vision. Fresh air with freedom from draughts is assured by Vauxhall "no-draught" ventilators (which, on a hot day, can be turned to scoop in cool air) and by a built-in ventilation system designed to provide adequate fresh-air ventilation without draughts.

Doors have press-button control inside and out, and for extra safety, incorporate locking slides. The hand brake is placed accessibly, horizontal on the floor at the right of the driving seat. Foot brakes are Vauxhall design with Lockheed hydraulic operation.

The Instrument Panel . . . elegantly styled yet truly practical

Everything you need to know about the way your car is performing is right before your eyes. Twin dials containing such thoughtful reminders as thermometer, headlamp beam indicator, oil and ignition warning lamps as well as speedometer and fuel gauge . . . are immediately in front of the driver . . . visible at a glance through the unobstructed top half of the steering wheel. Night lighting for these can be exactly controlled by rheostat panel lamps.

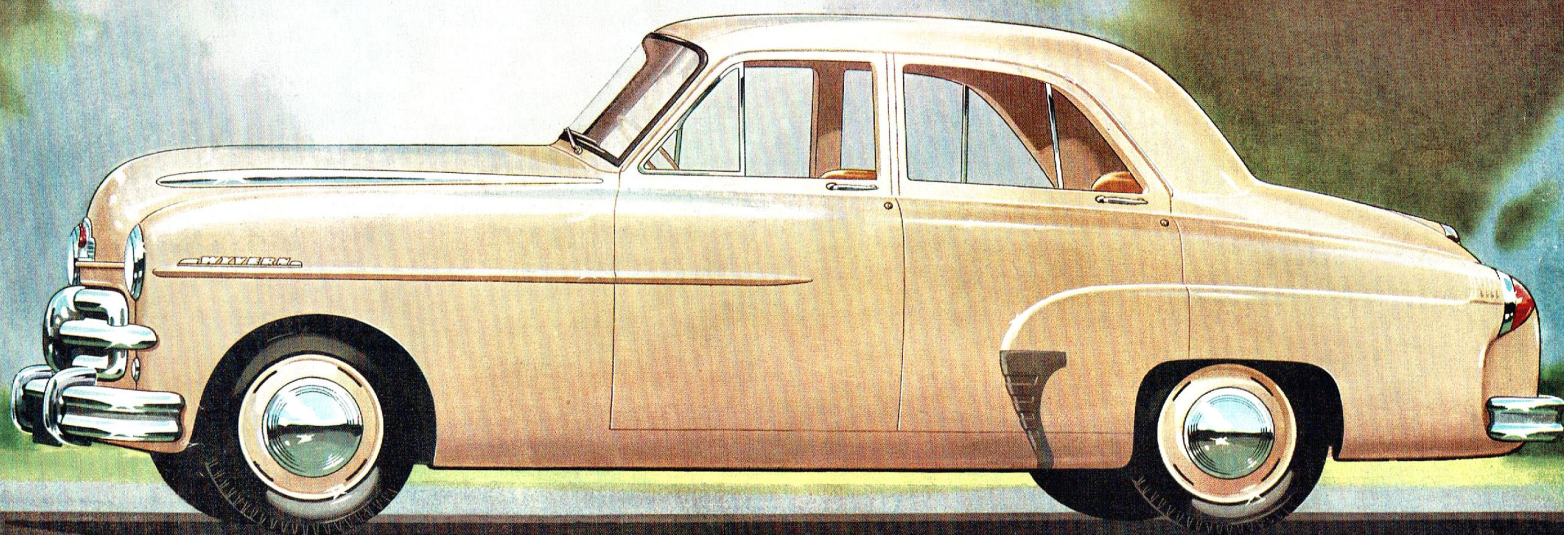
Controls for starter, choke, ventilation, wind-screen wipers, and lights are all carried on the central panel along the bottom of the Instrument Panel, and the left-hand side is taken up by a large glove box.

A radio grille in the centre of the instrument panel is styled to house a radio, which is available as an approved accessory. An ash tray is fitted either end of the instrument panel.

The beautiful Wyvern 4-door saloon, 4-cylinder, 15.63 h.p.

With its generous seating arrangement, the Wyvern saloon is a real family man's car, with plenty of room for luggage. The Wyvern saloon offers "big car" motoring with the utmost economy . . . without sac-

rificing quality or comfort. The graceful lines, the meticulous finish and the performance of this economy-minded car, merge to offer outstanding value-for-money.



WYVERN IS PRECISION ENGINEERED for DEPENDABILITY and LONGER LIFE

THE THRIFTY WYVERN "SQUARE" ENGINE

The advantages of "square" design show up conspicuously in the four cylinder 15.63 h.p. Wyvern Engine. The big bore and short stroke which characterise this "square" engine (3 1/2 in. bore x 3 in. stroke) allow bigger inlet and exhaust ports . . . cooler working valves and a short-throw, rigid crankshaft. These, in turn, offer more power, with greater fuel economy, longer engine life and exceptional "punch" and flexibility for a power unit of this capacity. High mechanical efficiency plus clever engineering design mean *more miles for less petrol*. With 6-phase carburetion and dual-

automatic ignition control, the Wyvern is a notable performer.

Rating, 15.63 h.p. No. of Cylinders, 4. Bore, 3.125 in. Stroke, 3.00 in. Displacement, 92 cu. in. Compression Ratio, 6.8 : 1. Maximum B.H.P., 43.5 at 4000 r.p.m. Maximum Torque, 75 lb. ft. at 2000 r.p.m.

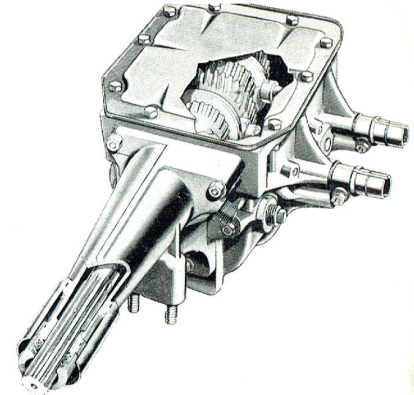
NEW "ALLIGATOR" BONNET

For ready service access the Wyvern is fitted with a spring-loaded "Alligator" bonnet. Finger pressure releases the double safety catch—and the spring-assisted bonnet rises gently, safely counterpoised without struts.

THE REAR AXLE— COMPACT AND STRONG

The big, hypoid pinion and sturdy crown wheel mean long, trouble-free, silent service from the rear axle. Hypoid gearing enables a larger pinion to be used with a smaller crown wheel than in the usual spiral bevel design. There is larger tooth contact area. Teeth engage more smoothly and hence more quietly.

Widely spaced taper roller bearings, with positive lubrication, support the hypoid pinion. The differential assembly runs in taper roller bearings, and the outer ends of the semi-floating axle shafts are carried in sealed ball bearings. Axle shafts are induction hardened for high tensile strength and resistance to fatigue.



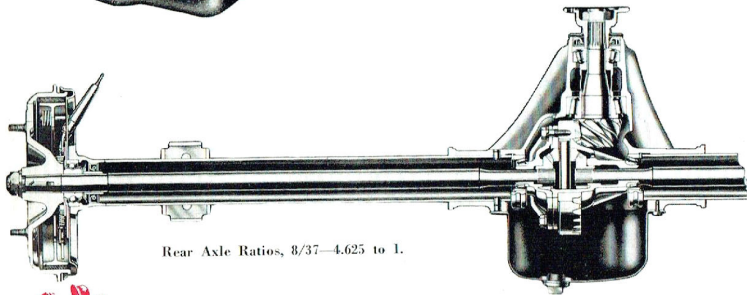
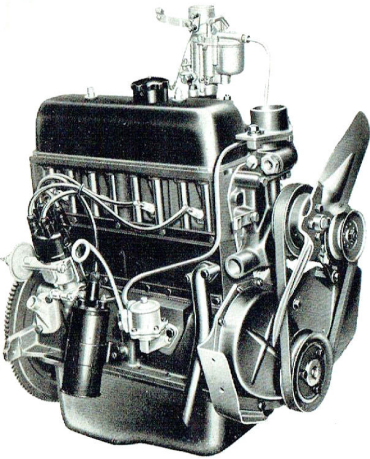
CONTROLLED 3-SPEED SYNCHROMESH GEAR BOX

Vauxhall's famous *controlled synchromesh* on second and top ratios makes clashing of gears impossible. They cannot be brought together until synchronisation takes place, and then engagement is smooth and silent. All gears are of helical tooth form for quiet running. The Vauxhall gear box has an aluminium housing to reduce weight without loss of strength.

Improved linkage between the gear box and the gear shift lever below the steering wheel gives a positive handling quality. Sleek changes can be made without removing the hand from the steering wheel.

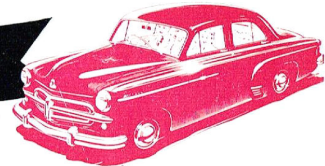
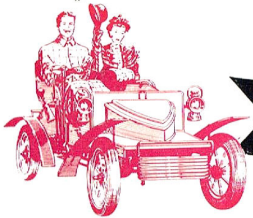
Gear Box Ratios:—

1st	3.434
2nd	1.633
Top	Direct
Reverse	3.434



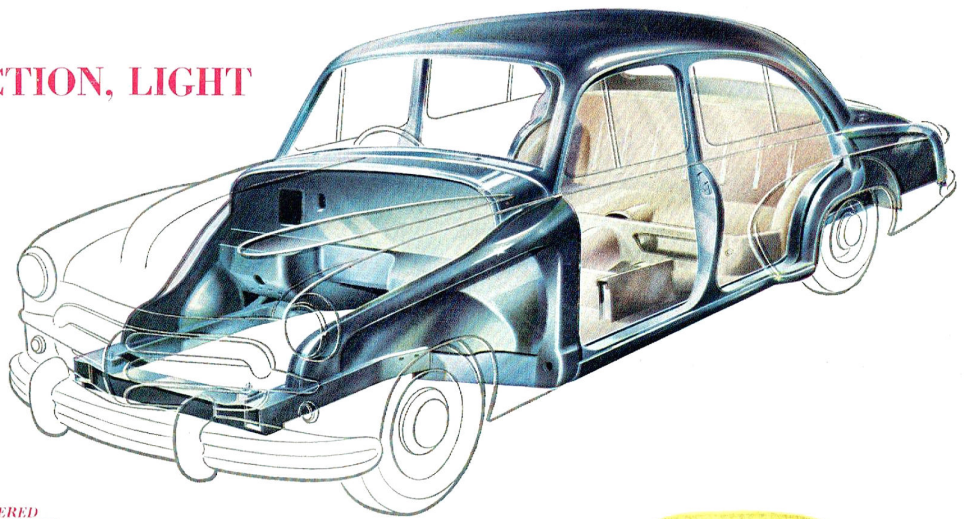
Rear Axle Ratios, 8/37—4.625 to 1.

Backed by over 50 Years of Engineering Leadership...



INTEGRAL BODY CONSTRUCTION, LIGHT YET IMMENSELY STRONG

This picture shows the principle of "integral construction." Chassis and body are integrated into a single unit of immense strength. From front crossmember to luggage trunk there is a single structure of welded steel—engineered to resist stress without distortion. This torsional stiffness is the foundation of the Vauxhall ride. The latest Wyvern represents Vauxhall's most advanced development in securing extra strength while substantially saving weight and so adding to performance and saving petrol.



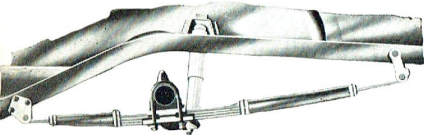
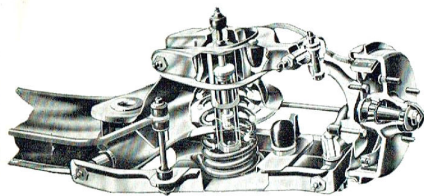
"BIG CAR" COMFORT IS DESIGNED AND ENGINEERED INTO THE VAUXHALL WYVERN

Carefully balanced suspension is the secret of the Vauxhall ride. Simple, reliable, supremely comfortable, Vauxhall independent front suspension works on the long arm and short arm principle. Big, resilient coil springs enclose double-acting telescopic shock absorbers. For extra steadiness on corners a stabilizer bar links the right and left hand suspension units. Rear suspension too is of advanced design. There are fewer leaves in the long semi-elliptic springs—but the leaves are extra-wide for extra riding comfort and greater steadiness when cornering. The double-acting telescopic shock absorbers are inclined inwards for added stability and, with the wide springs, provide superlatively easy riding.

space has been utilized to provide generous comfort for five or six adults with luggage space to match. Vauxhall engineers have provided big car comfort with weight-saving techniques which preserve good power-to-weight ratios for good performance and fuel economy.

IMPORTANT DIMENSIONS

Interior	
Leg room, front	42½ in.
Leg room, rear	42 in.
Head room, front	40 in.
Head room, rear	39 in.
Seat width, front	56 in.
Seat width, rear	57 in.
Exterior	
Wheelbase	103 in.
Track, front	53 in.
Track, rear	54½ in.
Length, overall	172½ in.
Width, overall	67 in.
Height, overall (unladen)	63½ in.
Turning circle diam.	38 ft.
Ground clearance	7 in.

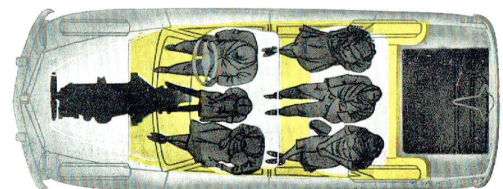


SO EASY TO DRIVE

New "recirculating ball" steering makes the big Wyvern as easy to park as a baby car. The great mechanical efficiency of this improved steering mechanism means long, trouble-free life and precise handling at all speeds.

SPREADING COMFORT FOR 5 OR 6

These illustrations show how cleverly the Wyvern has been styled to secure the very maximum passenger and luggage space within handy overall dimensions. Actual measurements, set forth below, prove how effectively



VAUXHALL WYVERN SPECIFICATIONS

ENGINE: Four cylinder in-line type. Push rod operated overhead valves in a detachable head. Gear box built as a unit with engine, complete assembly mounted in the frame at three points.

Number of cylinders, 4; R.A.C. and S.A.E. rating, 15.63 h.p.; Bore, 3.125 in.; Stroke, 3.03 in.; Displacement, 97 cu. in.; Compression ratio, 6.5 to 1; Maximum B.H.P., 45.5 at 4000 r.p.m.; Maximum torque, 75 lbs. ft. at 2000 r.p.m.

Cylinder block cast integrally with crankcase. Three-bearing crankshaft with steel shell, white metal lined main bearings.

Domed crown aluminium alloy tin plated pistons with split, oval-ground skirts. Big-ends split diagonally with serrated joint faces; steel shell, white metal lined bearings. Hole in big-end allows jet of oil to emerge to lubricate cylinder walls.

LUBRICATION SYSTEM: High-pressure system with submerged gear type pump. Oil pump intake protected by gauze strainer. Crankcase ventilation.

COOLING SYSTEM: Orthodox system. Centrifugal pump. Circulation from full-length cylinder jackets to head through cooled slots. Thermostatic control. Capacity of system, 12 Imp. pints.

FUEL SYSTEM: By AC mechanical pump. Zenith model 30 VIG-7 carburettor fitted with accelerator pump and part throttle economy valve. Air intake fitted with combined AC air filter, silencer and flame arrester. Fuel tank capacity, 11 Imp. gallons.

CLUTCH: Single dry plate. Diameter of friction facing, 7 3/4 in.

GEAR BOX: Three forward speeds and one reverse. Vauxhall controlled synchromesh on top and second speeds. All gears of helical tooth form. Horizontal gear control lever mounted on steering column. Gear box ratios: First, 3.434 to 1; Second, 1.638 to 1; Top, direct; Reverse, 3.434 to 1.

DRIVE LINE: Single open propeller shaft; Hardy-Spicer needle roller bearing universal joint at each end.

REAR AXLE: Semi-floating, with hypoid final drive. Two-pinion differential; taper roller bearings. Induction hardened axle shafts, not interchangeable side for side. Axle ratio, 4.625 to 1.

FRONT SUSPENSION: Independent front wheel suspension of coil spring and wishbone type. Complete front assembly bolted, with rubber insulation, to underside of body forward extension. Stabilizer bar mounted across vehicle in front of suspension unit. Double-acting telescopic shock absorber centrally mounted within each coil spring.

REAR SUSPENSION: Long, semi-elliptic under-slung rear springs of wide leaf type (2 1/4 in. wide), shackled at rear end. Spring leaves protected by gaiters, eyes and shackles fitted with rubber bushes. Direct double-acting telescopic shock absorbers mounted with pronounced inward inclination, between U-bolt clamp plates on rear axle and reinforcements on underside of integral body.

BRAKES: Foot brake, Vauxhall-designed brakes with Lockheed hydraulic operation. Total lining area, 100.6 sq. in. Handbrake located at right side of driver's seat; operates rear brakes only by separate mechanical cable system.

STEERING: Recirculating ball type. Steering wheel diameter, 17 in. Steering gear ratio, 15.5 to 1. Turning circle, 38 ft.

WHEELS AND TYRES: Detachable steel disc wheels with wellbase rims. Size, 4J-15. Tyres, 5.60-15; pressure (front and rear), 25 lb. sq. in.

ELECTRICAL SYSTEM: 12-volt. Generator output regulated by Compensated Voltage Control system. Distributor incorporates automatic centrifugal timing control and vacuum advance

unit. Ignition coil. Single wind-tone horn. Sealed front, pre-focus double-dipping headlamps, parking lamps mounted below headlamps. Foot-operated dipper switch. Twin combined tail and stop lamps. Illuminated number plate mounted on luggage trunk lid. Interior lamp in centre of roof (Saloon). Four instrument panel lamps, with rheostat control. Flush-fitting, self-return direction indicators (Saloon). Battery, 12-volt.

BODY: Saloon—Four-door, four-window design, solid top, single-piece roof. All-metal welded integral construction, with integral extension to carry engine and front suspension. Doors locked by slide type catches, both front doors can be unlocked by ignition key. All doors fitted with balanced, direct-lift windows; front doors have widely adjustable "No-Draught" ventilators. Large area curved rear window.

Vagabond—Two-door, Sports Tourer, incorporates a conventional chassis frame. Doors fitted with slide type safety catches.

Saloon and Vagabond—Slam type door locks controlled by push buttons inside and outside. Fixed large-area curved windshield with twin self-parking mechanical wipers driven by flexible cable from camshaft. Windshield and all windows of safety glass. Large capacity luggage trunk, lid spring loaded. Spare wheel carried in hinged cradle beneath luggage trunk floor.

SEATING AND FITTINGS: Single-piece front seat, easily adjustable for leg-room on smooth-running slides. Rear seat extends full width of body, squab of foam rubber. Cushions and squabs trimmed in P.V.C. (Saloon). Foot rest for rear passengers under front seat. Other equipment includes twin sun visors, two ash trays in instrument panel, one recessed in back of front seat.

The right is reserved to alter any details of price, specification and/or equipment without previous notice.

APPROVED ACCESSORIES

APPROVED, TAILORED-FOR-VAUXHALL ACCESSORIES to suit your individual taste and requirements

FOR EXCEPTIONAL DRIVING COMFORT:

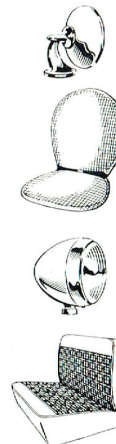
- Windshield Sunshade
- Venetian Rear Light Shade
- Car Heater
- Coolaride Cushion*

YOU MAY NEED THESE SAFETY AIDS:

- Fog Lamps*
- "Screen Clean" Windshield Washer
- Dual Horns
- Petrol Tank Locking Cap, Kit

ENHANCE THE APPEARANCE OF YOUR VAUXHALL WITH:

- Number Plate Frames
- Seat Covers*
- Wheel Trim Rings
- Hood Ornament
- Rear Bumper Over-Rider Kit



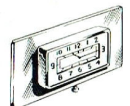
(*illustrated)

USEFUL, PRACTICAL ACCESSORIES:

- Reversing Lamp
- Electric Cigarette Lighter
- Come-Back Fender Mirror*
- Electric Clock*
- Trailer Coupling Kit

CORRECT MAINTENANCE ADDS VALUE TO YOUR VAUXHALL:

- Oil Bath Air Cleaner
- Selfeed Battery Filler Bulbs
- NASCO Car Wash
- NASCO Car Cleaner
- NASCO Car Polish
- NASCO Leather Cleaner



All Nasco Accessories are approved and guaranteed by General Motors-Holden's Ltd.

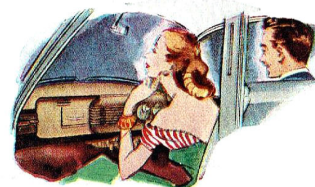
PROTECTIVE OWNER - SERVICE POLICY:

The well-known GMH Warranty protects you against defective workmanship or materials for 90 days or 4000 miles of operation. Through the new GMH Dealer-Owner Service Policy you are also entitled to two thorough inspections and adjustments of your Vauxhall without charge. Vauxhall spare parts and expert service available throughout Australia.



G.M.A.C. CONFIDENTIAL PAYMENT PLAN:

Convenient Hire-Purchase Terms are available through General Motors' own finance company. Your dealer can explain the G.M.A.C. plan and arrange payments to suit you.



"AIR CHIEF" AUSTRALIA'S FINEST CAR RADIO: There's an "Air Chief," Australia's finest car radio, specially designed for Vauxhall. Controls are designed to match other instrument panel fittings. Tone, volume and selectivity equal to the best home console models.

SALES AND SERVICE: All over Australia is a network of Vauxhall dealers providing spare parts and trained service to keep your Vauxhall on the road. Wherever you go each one of these dealers has special equipment and factory-trained personnel to ensure quick, competent workmanship and your complete satisfaction.

GENERAL MOTORS-HOLDEN'S LTD.

BRISBANE SYDNEY MELBOURNE ADELAIDE PERTH

Printed in Australia—VW1—7.5M—5/54