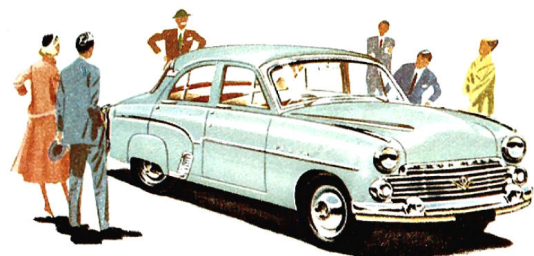


You get "that something extra" with the new Vauxhall Velox





Now more beauty, more comfort, more miles-per-gallon . . . and it's every gleaming inch a Vauxhall.

VAUXHALL VELOX

Wouldn't you rather own a car that's away from the commonplace? A car that offers a tradition of distinction too? Such a car is the new Velox . . . the finest Vauxhall yet produced . . . and it looks it.

Every gleaming inch of Velox proclaims its distinction.

The tasteful good looks of Velox result from smart colours (two tone or single) and clean lines, rather than applied embellishments.

From the new bold, bar-grille treatment of the front end—set with a handsome gold and enamel medallion, and with the word "Vauxhall" embossed in gold above—a single chromed rubbing strip runs back to the new rear lamp unit.

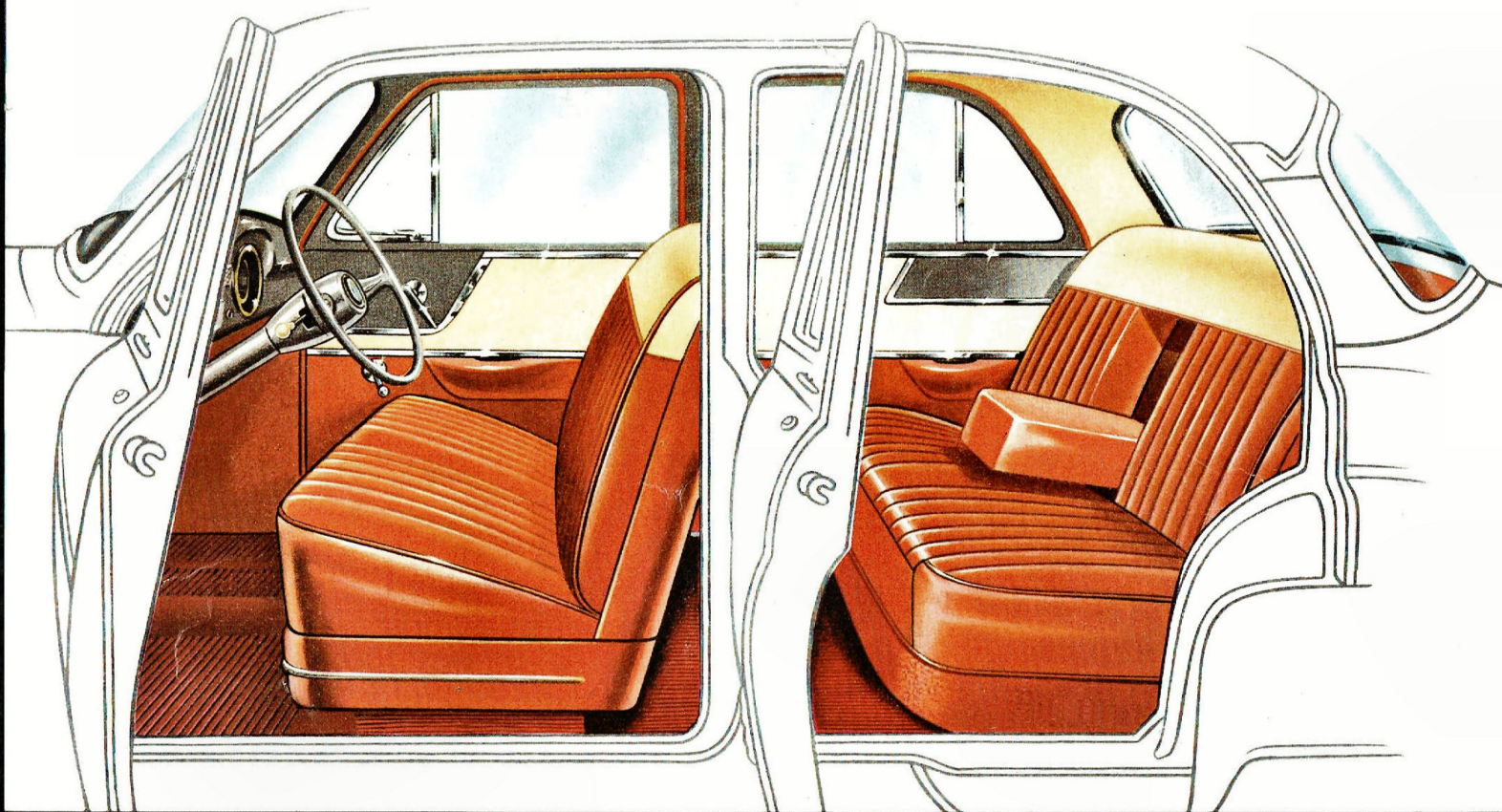
And, of course, the Vauxhall bonnet flutes are a proud reminder

of the over 50 years of automotive leadership inherent in Vauxhall. For the driver, the new Velox offers superb top-gear performance over the whole speed range, for it is essentially a *practical* car, happy on a shopping crawl, ready for a fast run to the hills. A new refinement to the conspicuously successful 6 cylinder 'oversquare' Velox engine is an extra-economy carburettor to give you sparkling performance with still more miles per gallon.

For its passenger, Velox has styling and comfort features of notable thoughtfulness and detail. Interior decor is a discriminating blend of fabric texture, and harmonious colour.

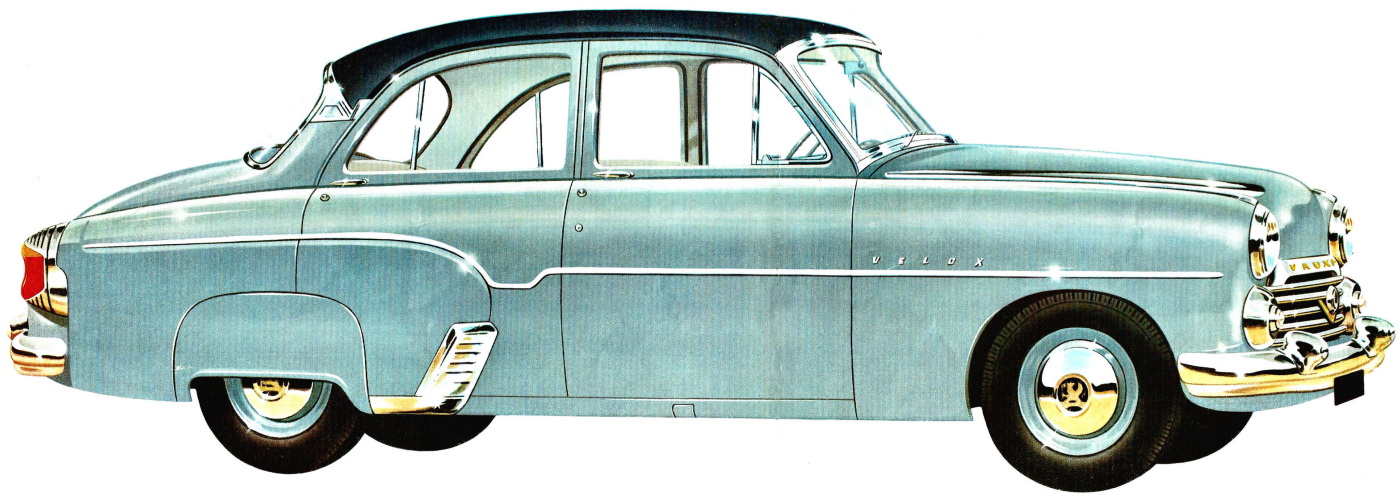
Consider this point too, with all the worthwhile extra value and satisfaction Vauxhall Velox gives, you are assured of a high price when you sell. Resale value figures prove this.

DON'T YOU FEEL IT'S TIME YOU BOUGHT A VAUXHALL VELOX?



How beautiful Velox is inside. Yes, the Velox interior is beautiful. Soft two-tone blendings of colour, rich texture, fine craftsmanship and attention to detail characterise the new Velox . . . yet withal, it is so practical. The deeply sprung seats are upholstered in long-wearing Elascofab, an easily cleaned material which keeps its smartness. Headlining and trim throughout are of materials that can be washed easily with soap and water. Compare Velox comfort with **any** car in its class. As you can see there's plenty of room to relax and enjoy your motoring.

The wide, comfortable seats provide ample hip and shoulder room for up to six people, with complete **under-knee** and shoulder support. Seats are deeply sprung on "Z" type springs. A big **flat**, softly-padded folding armrest divides the rear seat. The padded armrests on the doors also function as door pulls, and either front door operates an automatic switch for the interior light. The big forward hinged Vauxhall doors open so wide you step inside easily, without fuss or discomfort. In every way . . . in beauty, comfort, thoughtfulness and practicability . . . Vauxhall Velox is superb.



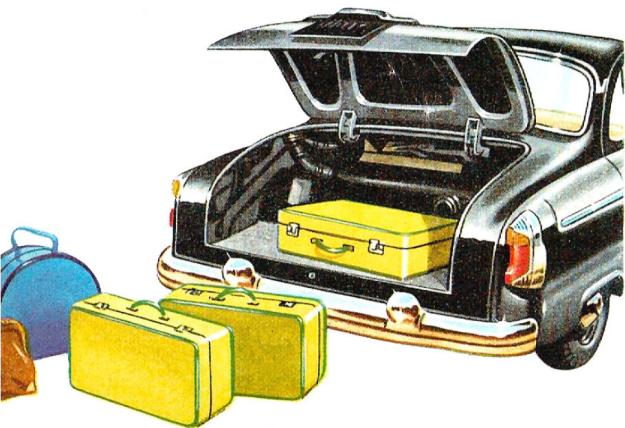
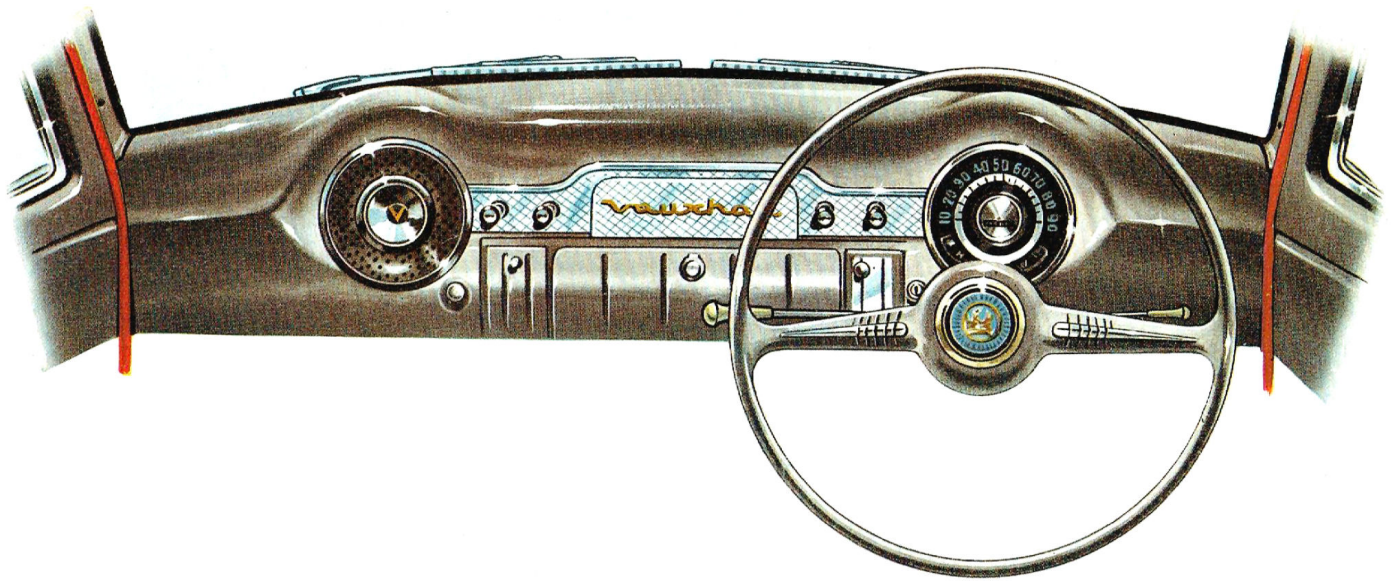
*As English as England—
the superb Vauxhall Velox
saloon—6 cylinder, 23-44
h.p. O.H.V.*

*Among fine cars...
an exceedingly fine car!*

*Against more powerful cars...
not to be taken lightly.*

*Driven for economy...
remarkably economical.*

*For motoring value,
Velox is outstanding
in any class.*



Slip behind the wheel open the boot check Velox over

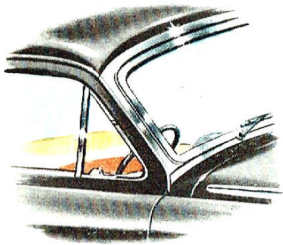
Looking around the new Vauxhall Velox you are made very much aware that here is a car with "that something extra". Slip behind the wheel, look out over the steeply sloping Velox bonnet . . . down between the traditional Vauxhall flutes . . . vision ahead and either side is near perfect. Velox is designed for effortless driving.

The handsome Velox instrument panel is a masterpiece of functional styling and attention to detail. Fingertip controls and easy-to-read instruments make for relaxed handling . . . while a new disc-type speedometer, featuring a bright band of light instead of a needle, increases driving safety. You'll note too, that no matter how sunny the day, there's no disconcerting reflection of the instrument panel in the big curved windscreen.

A new 2-speed electric windscreen wiper ensures a clear windscreen in the heaviest rain. Even the luggage boot of the Velox will please you with its forethought and design. There is commodious space for luggage and all of it usable. The flat floor is free from obstructions—and is level with the boot opening. No straining to lift heavy objects **up**, and then **out**.

The spare wheel is stored separately beneath the floor, and swings out when required. Another point, the boot lid is spring-assisted and with a soft nudge will rise automatically and gently to its widest opening position.

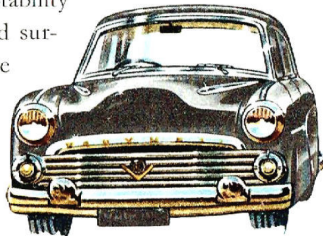
Isn't Velox handsome!



Handsome . . . and practical too. Velox styling makes its important contribution with clear all-round vision. The curved wide-vision windscreen has slender side pillars set well back, and the wrap-around

rear window gives virtually uninterrupted rear vision for traffic movement or when reversing.

The airy grace and powerful response of Velox, typified by the striking front-end styling, is the result of careful engineering. Stability at speed, level steadiness on bad surfaces, straight-line reaction to the powerful hydraulic brakes are all qualities which start from the torsional stiffness of light-yet-strong, **proven** Vauxhall integral construction.



Proven? Yes! Vauxhall pioneered integral construction almost twenty years ago.

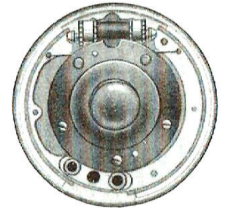
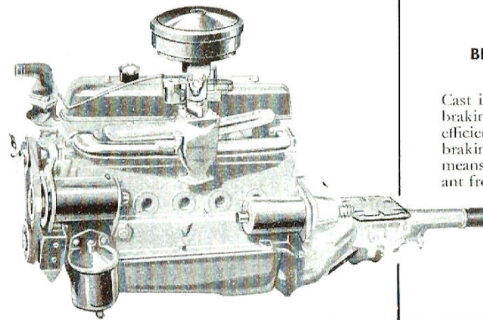
The stylish new rear lamp unit contains stop and tail lights (red), reflectors (red), and direction indicator lights (amber) one above the other. The lens unit wraps round to show on both sides and behind at once.



GREAT FEATURES BACK UP VELOX PERFORMANCE

THE VELOX ENGINE IS NOW FURTHER IMPROVED.

The long-life "oversquare" Velox engine of 23.44 h.p., 6 cylinder O.H.V. design, now features a new carburettor. This, in conjunction with a higher compression ratio of 6.8 to 1, gives miles better economy . . . as well as surging power you can feel at the wheel.



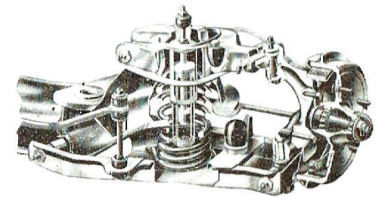
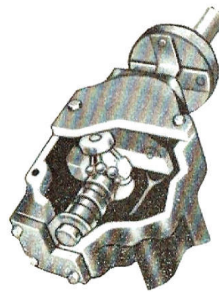
BRAKING EFFICIENCY MATCHES VELOX PERFORMANCE.

Cast iron brake drums and a more positive braking action has further improved the efficiency of the proven Vauxhall hydraulic braking system. Better heat dissipation means less fade risk, while the more important front brake cylinders are larger.

Detachable brake drums make servicing and adjustment easier.

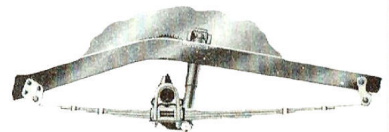
RE-CIRCULATING BALL STEERING MAKES PARKING SO EASY.

The re-assuring firmness of Vauxhall steering will delight you. The finger-tip ease of parking will surprise you. The secret is **re-circulating ball steering** which becomes lighter as full lock is approached and combines with the unique Vauxhall flexibly-coupled steering shaft to virtually eliminate all road shock.



SUPPLE 'BALANCED-RIDE' SUSPENSION.

The unified integral construction of Vauxhall is a sure foundation for the Velox suspension. Front suspension is by big coil springs containing double-acting shock absorbers; the long, wide rear springs have double-acting shock absorbers, angle-mounted for extra stability.



SPECIFICATIONS

ENGINE — Six cylinder in-line type. Push-rod operated overhead valves. Gearbox built as a unit with engine, complete assembly mounted in the frame at three points. R.A.C. and S.A.E. rating, 23.44 h.p.; max. B.H.P. 65.5 at 4,000 R.P.M.; max. torque 110 lbs. ft. at 1,400 R.P.M.; Bore, 3.125 in.; Stroke, 3.00 in.; Displacement 138 cu. in.; Compression ratio, 6.8 to 1. Four-bearing crankshaft with steel shell, white metal lined main bearings. Flat crown aluminium alloy tin-plated pistons with split oval-ground skirts; chromium plated top piston ring; steel shell white metal lined bearings. High-pressure lubrication system with submerged gear type pump.

Cooling System : Pressurised system operating at 3½ to 4½ lb. per sq. in. raising boiling point of water to 221-224°F. Special radiator cap with pressure and vacuum spring release valves. Thermostatic control. Capacity of system, 17½ imp. pints.

Fuel System : AC mechanical pump. Zenith model 34VN carburettor fitted with accelerator pump and part throttle economy valve. Fuel tank capacity, 11 imp. gallons, 3.7 in. diam. filler cap.

TRANSMISSION

Clutch : 8 in. single dry plate.
Gearbox : Three forward speeds and one reverse. Synchronesh on top and second speeds. Horizontal gear control lever mounted on steering column. Gearbox ratios : First 3.103 to 1. Second, 1.630 to 1. Top, direct. Reverse, 3.103 to 1.
Drive line : Single open propellor shaft; needle roller bearing universal joints.
Rear Axle : Semi-floating; hypoid final drive. Two-pinion differential; taper roller bearings. Induction hardened axle shafts, not interchangeable. Axle ratio, 4.125 to 1.

CHASSIS FEATURES

Front Suspension : Independent front wheel suspension of coil spring and double wishbone type. Stabilizer bar mounted across vehicle. Double-acting telescopic shock absorber centrally mounted within each coil spring.
Rear Suspension : Long, semi-elliptic underlung rear springs of wide leaf type (2½ in wide), shackled at rear end. Spring eyes and shackles fitted with rubber bushes. Direct double-acting telescopic shock absorbers mounted with pronounced inward inclination.
Brakes : Foot brakes, Vauxhall designed brakes with Lockheed hydraulic operation. Cast-iron, detachable brake drums. Front/rear braking ratio 64 : 36. Total lining area, 100.65 sq. in. Hand-brake lever operates rear brakes only by separate mechanical cable system.
Steering : Flexibly-coupled recirculating ball type. Steering wheel diameter, 17 in. Steering gear ratio, 15.5 to 1. Turning circle, 38 ft.
Wheels and Tyres : Detachable steel disc wheels with well-base rims. Size 4J.—15. Tyres 5.90—15 x 4 ply tubeless type. Pressure (front and rear) 24 lb. sq. in.

ELECTRICAL SYSTEM

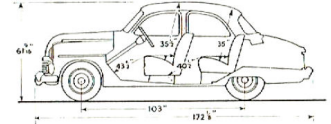
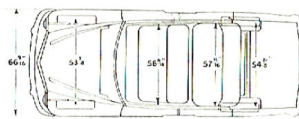
12-volt generator with regulated output. Interruptor unit and auxiliary fuse. Ignition coil. Twin horns. Sealed pre-focus double-dipping headlamps, parking lamps mounted below. Foot-operated dipper switch. Engine thermometer. Instrument panel lamps with rheostat control. Flashing self-cancelling twin signal lamps front and rear. Dual tail lights and mechanically operated stop lights built as unit assemblies with the rear signal lamps. Twin self-parking electric windscreen wipers. Battery 12 volt. Interior lamp in centre of roof operated by integral switch and by switch on front doors.

BODY AND INTERIOR

Saloon : Four-door, four-window design, solid top, single-piece roof. All-metal welded integral construction, with integral extension to carry engine and front suspension. Rear doors locked by control knobs on window sills, both front doors can be unlocked by ignition key. Wind-up windows : front doors have "no-draught" ventilators. Full width curved windshield and rear window. Door locks controlled by push buttons outside. Safety glass throughout. Spare wheel carried in hinged cradle beneath luggage trunk floor.

Interior : Single-piece front seat, easily adjustable for leg-room. Seat backward adjustment by pressure against lever. Up and down movement adjusted by metal shims. Full width rear seat. Seats fitted with "Z" type springs. Elascofab trim. Rear seat squab, with foam rubber; centre folding armrest. Armrests on all four doors. Footrest for rear passengers. Twin sun visors, one ash tray in instrument panel, one recessed in back of front seat.

The right is reserved to alter any details of specification and/or equipment without previous notice.



PROTECTIVE OWNER—SERVICE POLICY

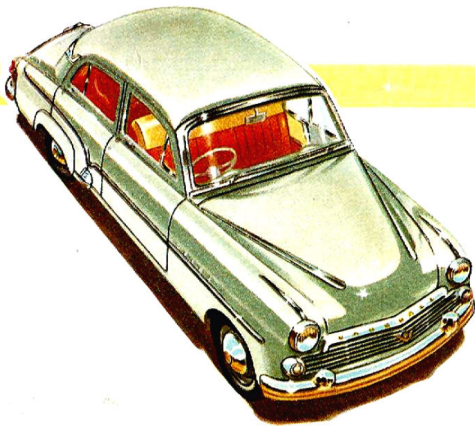
The well-known GMH Warranty protects you against defective workmanship or materials for 90 days or 4,000 miles of operation. Through the GMH Dealer-Owner Service Policy you are also entitled to two thorough inspections and adjustments of your Vauxhall without charge. Vauxhall spare parts and expert service available throughout Australia.

AIR CHIEF CAR RADIO

A famous "Air Chief" car radio is especially tailored for Vauxhall and is available as an accessory.

G.M.A.C. CONFIDENTIAL PAYMENT PLAN.

Convenient Hire-Purchase arrangements are available through General Motors' own finance company. Your dealer can explain the G.M.A.C. plan and arrange payments to suit you.



GENERAL MOTORS-HOLDEN'S LTD.
Brisbane, Sydney, Melbourne, Adelaide, Perth.