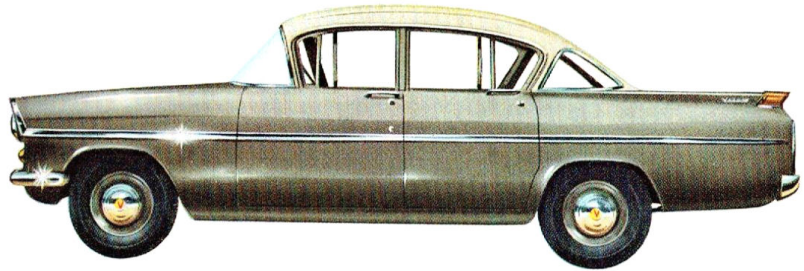




Now, more than ever.... it's really something to own a

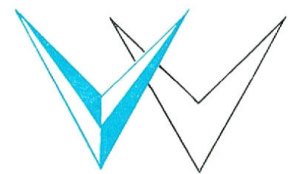
VAUXHALL

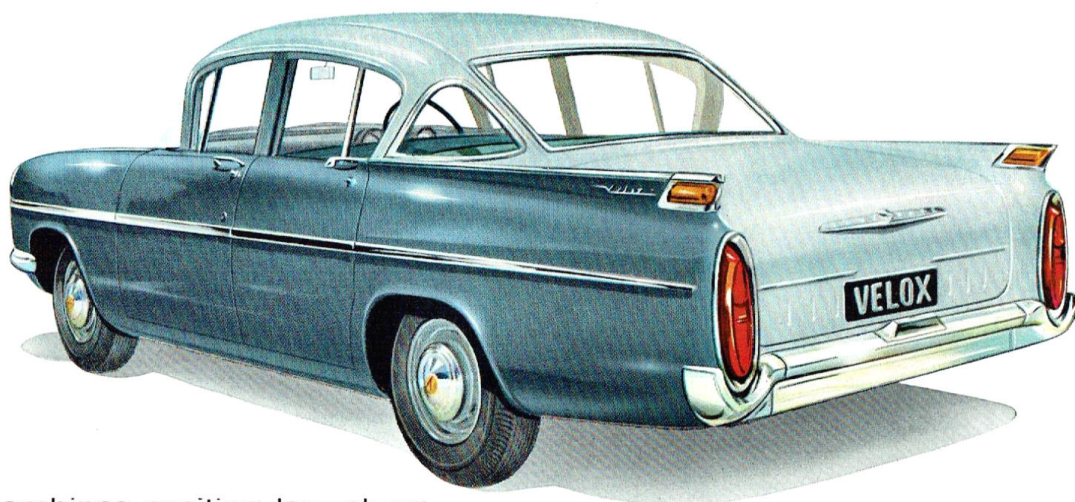


More than a new model...

THE NEW VAUXHALL VELOX represents a bold new approach to motoring from England's most modern car factory

Here in the latest of a long line of illustrious Vauxhalls is a completely new car embodying many bold, progressive departures in design. Not merely a style change, the new Velox is the brilliantly successful result of purposeful design for better, safer motoring. Its main visible characteristic is an unusually low silhouette which gives the car an air of great vigour . . . an exciting atmosphere of aerodynamic beauty that sets a new pace in saloon car design.

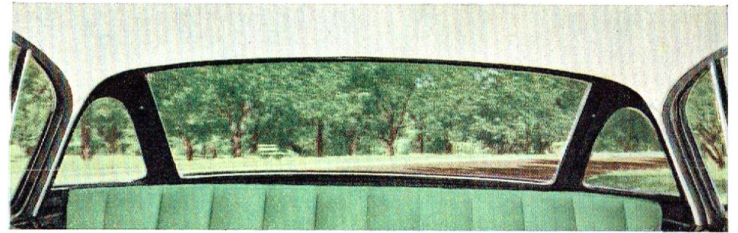
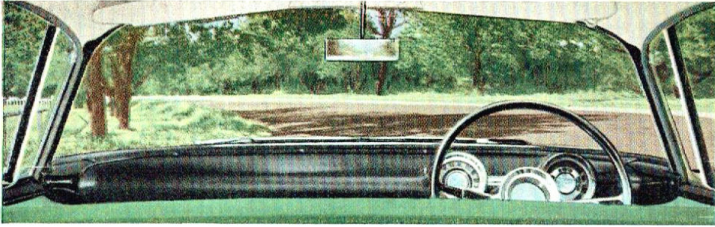




Velox combines exciting, low-slung lines with family saloon space and comfort.

From its sleek, wind-cheating contours and lower centre of gravity, Velox not only inherits breath-taking beauty but also a standard of performance and roadability that delights all who experience it. Matching its outward appearance and impressive behaviour is its interior richly endowed with appointments that have comfort as their main consideration. Generously cushioned and sprung, full-width seats cradle occupants in deep armchair luxury. Seats and trims in a wide range of single and two-tone treatments are fashion-keyed to complement the beautiful, new deep-gloss exterior lacquers. Although beauty is the theme, serviceability is assured by the hard-wearing, easy-to-clean fabrics used throughout.





Full circle vision opens up a new world of **PANORAMIC MOTORING**

With its wide angle windshield, low glass line, slender pillars and clear, rear window arrangement, Velox offers all the sightseeing pleasures of panoramic motoring in an open car. More importantly, this full circle vision affords greater safety and

driving ease for travelling and parking. Velox is a delightfully roomy car with generous hip and shoulder room for six adults to ride long distances in comfort. There's generous accommodation in the flat-floor boot for the whole family's holiday luggage, too.



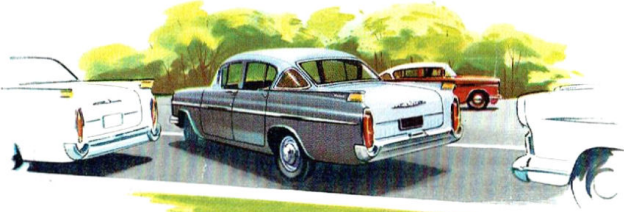


It's really something to drive a Vauxhall Velox

Velox is no ordinary car. Whilst it more than meets all the requirements of the sensible, family saloon, it offers so much extra in driving pleasure for the motoring enthusiast. To take one's place behind the wheel and note how naturally hands and feet meet controls, how comfortably one's eyes take in the neat, completely legible instrument clusters is a foretaste of good things to come. The big thrill comes when one sets this business-like car

in motion . . . to feel the ready response of the 6-cylinder 82.5 brake horsepower engine, the effortless operation of the hydraulically-controlled clutch, the swift, easy movement of the three forward synchromesh gears, the light, positive action of re-circulating ball steering, the smooth, safe braking. It is more than transport—you'll want to drive your Velox for the sheer joy of it—it's that sort of car!

Velox's eager-to-go performance and superb handling stem from advanced Vauxhall engineering features.



PARKING IS CHILD'S PLAY . . . This is where Vauxhall's special re-circulating ball steering comes into its own. With this system, steering becomes progressively lighter as wheels approach full lock. Another boon to parking is the full-circle vision and the fact that all four fenders are visible from driving position.



NO DOUBT ABOUT VELOX BRAKING . . . Vauxhall braking has always been reliable; but this new Velox features the latest hydraulic system with 37% more brake lining area than previous model. The resultant increase in braking efficiency takes the doubt out of unexpected stops.



ROUGH ROADS DON'T MEAN A THING . . . Velox features balanced flat-ride suspension for motoring free from bounce, sway, pitch or dip on rough going or fast cornering. This is achieved by the use of independent front suspension employing long arm wishbones, double-acting shock absorbers and coil springs together with long, wide reverse camber springs and hydraulic shock absorbers at the rear.



MAKES MOLEHILLS OUT OF MOUNTAINS . . . Velox is a true *top-gear* car, a fact you can prove over your own test-route. See how you stay in top *effortlessly* up even stiff grades . . . how you can get immediate, smooth response from the merest nudge of the pedal in top-gear even from walking pace. This top-gear flexibility not only makes driving easier and more pleasurable; but more economical too.



A DRIVER'S TREAT IN TRAFFIC . . . Velox relishes slow work as well as fast. Especially useful is the synchromesh on *first* gear which enables the driver to change down from second without fuss while moving at speeds up to 15 m.p.h. New gearbox with controlled synchromesh on *all* forward speeds makes this possible.



SURPRISING PETROL ECONOMY . . . Its low, streamlined form and a new petrol-saving carburettor ensure remarkable economy. Automatic choke, part-throttle economy valve for light loads, simple winter/summer adjustment and anti-seepage and anti-overflow emulsion block all contribute to money-saving.

Specifications

ENGINE :

SIX CYLINDER, Pushrod operated overhead valves. Gearbox built as a unit with engine, complete assembly mounted in frame at three points. R.A.C. and S.A.E. rating 23.44 h.p. Max. B.H.P. 82.5 at 4,400 r.p.m. Max. torque 124 lb. ft. at 1,800 r.p.m., bore $3\frac{1}{2}$ inches, stroke 3 inches, displacement 138 cu. inches, compression ratio 7.8:1. Four bearing crankshaft with steel shell, white metal lined main bearings. Flat crown aluminium alloy tin plated pistons with split oval ground skirts, chromium plated top piston rings, steel shell white metal lined connecting rod bearings. High pressure lubrication system, camshaft driven pump. Deep skirt block, webbed for extra rigidity.

COOLING SYSTEM : Pressurised system operating at 4 lb. per sq. in. raising boiling point of water to 223°F. Special radiator cap with pressure and vacuum spring release valves. Thermostatic control. Capacity of system, 16 imp. pints.

FUEL SYSTEM : Camshaft driven petrol pump. Downdraught carburettor with automatic choke, air intake fitted with silencer, oil-wetted air cleaner, flame arrester. Fuel tank capacity 10.8 gallons.

TRANSMISSION :

CLUTCH : Hydraulically controlled; 8 in. single dry plate, Gearbox : Three forward speeds, one reverse. Synchronesh on all forward speeds. Horizontal gear control lever, mounted on steering column. Gearbox Ratios : First 2.866 to 1, Second 1.635 to 1, Top, direct. Reverse 3.050 to 1, Drive Line : Single open propeller shaft, needle roller bearing universal joints. Rear axle : Semi floating. Hypoid final drive. Individually matched crown wheel and pinion. Axle ratio 4.11 to 1.

CHASSIS FEATURES :

FRONT SUSPENSION : Independent front wheel springing. Long and short arm units with double wishbones containing coil springs and double acting shock absorbers. Stabilizer bar connecting the units. Whole assembly mounted on steel cross member and bolted with rubber insulation to the body chassis.

REAR SUSPENSION : Long, semi-elliptic underslung rear springs of wide leaf type (24 in. wide) shackled at rear end. Spring eyes and shackles fitted with rubber bushes. Double acting hydraulic shock absorbers, mounted with pronounced inward inclination.

BRAKES : Foot brakes, Vauxhall designed brakes with Lockheed hydraulic operation. Composite brake drums, 9 in. dia. Front/rear braking ratio 64 : 36. Total lining area 137.75 sq. ins. Hand brake operates mechanically on rear wheels only.

STEERING :

Recirculating ball type. Steering wheel diameter 17 ins. Steering gear ratio 15.5:1. Turning circle, 36 ft.

ELECTRICAL SYSTEM :

12 Volt generator with regulated output, interruptor unit. Twin horns. Sealed pre-focus double-dipping headlamps. Separate front parking lamps. Foot operated dipper switch. Separate front turn indicator lamps (amber). Separate rear turn indicator lamps (amber). Twin, combined tail and stop lamps, housed in red translucent mouldings with reflectors. Central number plate lamp. Rheostat controlled instrument cluster illumination. Interior roof lamp (with map reading beam) operated by integral switch and switch on front doors. Two speed windshield wipers.

BODY AND INTERIOR :

SALOON : Four door, four window design, solid top, single piece roof. All metal welded integral construction. Rear doors locked by control knobs on window sills, both front doors can be unlocked by ignition key. Wind-up windows. Front doors have "no draught" ventilators. Door locks controlled by push buttons outside. Safety glass throughout. Spare wheel in well with cover. Wheel and cover released by single clamp.

INTERIOR : Single piece front seat, easily adjustable for leg-room. Seat backward adjustment by pressure against lever. Up and down movement adjusted by metal shims. Full width rear seat. Seats fitted with "Z" type springs. Black rubber mats of a simulated carpet pattern over heavy quality sound deadening felt front and rear. Elascobak and P.V.C. trims. Front and rear seat squabs with foam rubber; centre folding armrest. Armrests on all four doors. Footrest for rear passengers. Twin sun visors. One ash tray in instrument panel, one recessed in back of front seat.

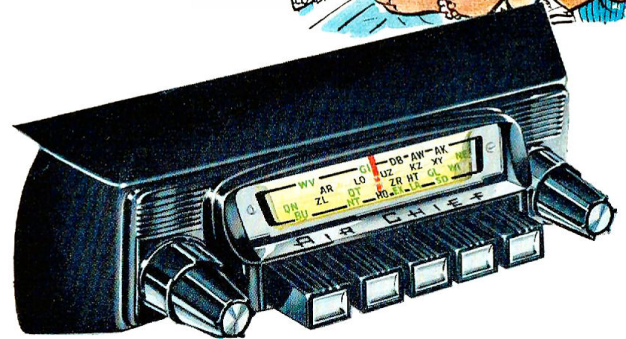
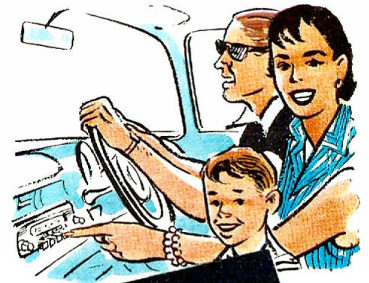
Specifications and equipment subject to change without notice.

GENERAL MOTORS-HOLDEN'S LTD.
Brisbane - Sydney - Melbourne - Adelaide - Perth

For such a modest outlay, you can increase your motoring pleasure tremendously with an

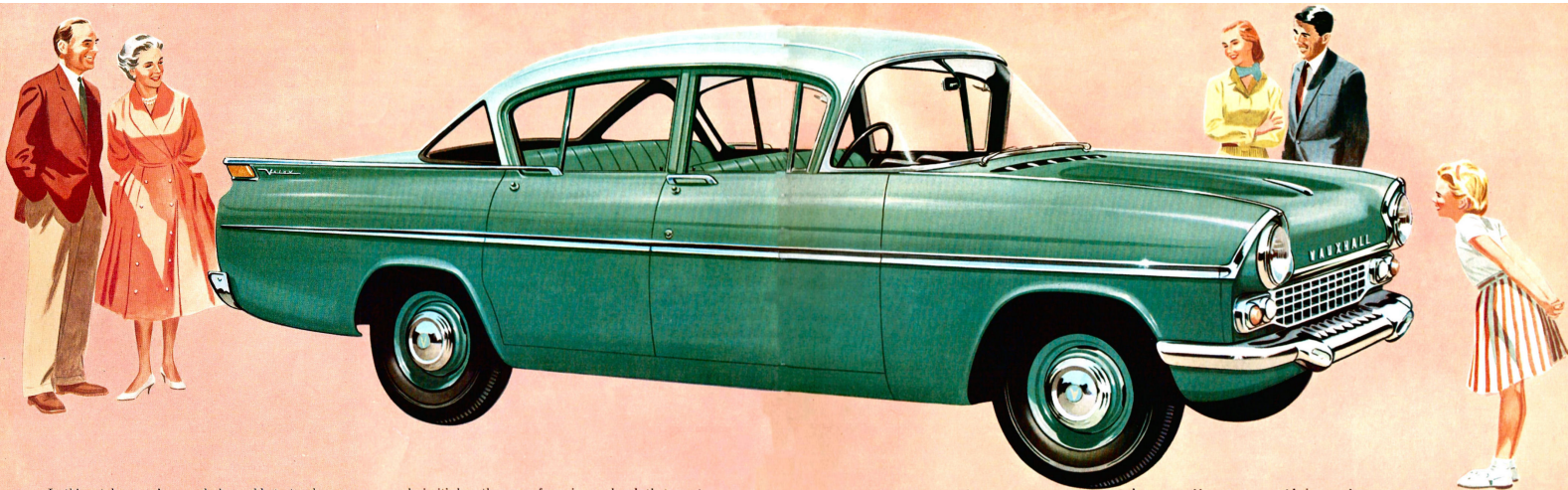
"AIR CHIEF" CAR RADIO* WITH FINGERTIP, PUSH BUTTON TUNING... *A GENUINE GMH NASCO ACCESSORY

Entertainment at your fingertips! The Air Chief Push Button Car Radio tunes your choice of any 5 pre-selected stations at the touch of a button. You get outstanding reception, rich tone and precise tuning every time. An Air Chief Push Button Car Radio is specially designed for your Vauxhall.



A wide range of specially designed NASCO accessories is available for your Vauxhall. They include such useful and decorative items as seat covers, hood ornament, rear wheel covers, car heater, wheel trim rings, electric clock,

fog lamps and many others. Either have your choice of NASCO accessories fitted before you take delivery of your car, or have them fitted as you need them. Your Vauxhall dealer can always supply genuine NASCO accessories.

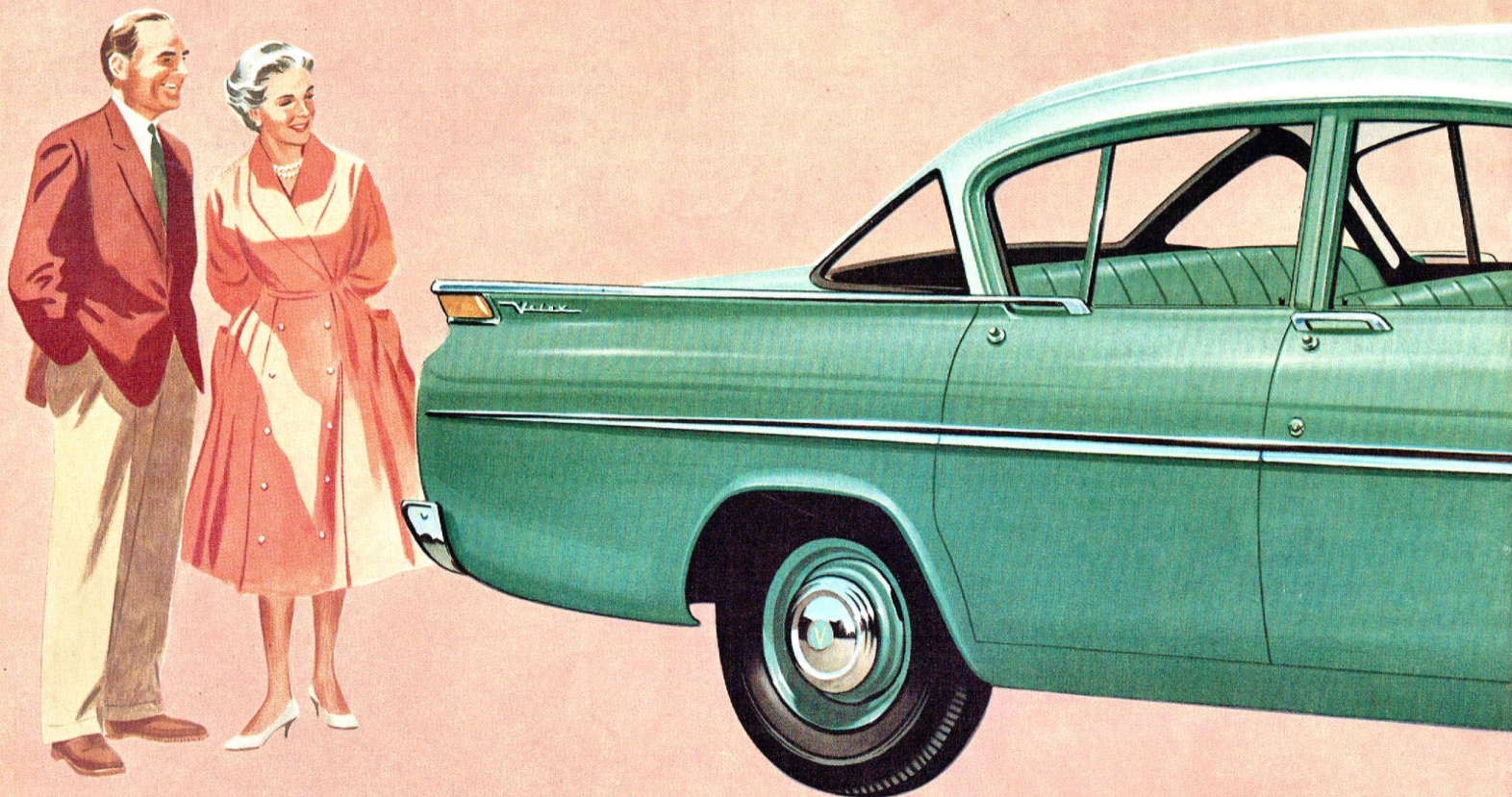


In this catalogue we've merely been able to touch on some of the major factors that make the new Vauxhall Velox a truly great car. No catalogue however, could possibly do justice to such an exciting car and in any case, in the final

analysis, it's how the car performs in *your* hands that counts. Your next step is to let this car prove itself and this can be arranged by a phone or personal call to the following address:

Now, more than ever.... it's really something to own a

VAUXHALL



In this catalogue we've merely been able to touch on some of the major factors that make the new Vauxhall Velox a truly great car. No catalogue however, could possibly do justice to such an exciting car and in any case, in the final

analysis, it's how the car performs in *your* hands that counts. Your next step is to let this car prove itself and this can be arranged by a phone or personal call to the following address: