



**Utilities and Panel Vans**

**INTERNATIONAL TRUCKS**

# discover INTERNATIONAL utilities and panel vans

Discover a blend of comfort, styling and capacity never before known in a utility or panel van: discover the exciting INTERNATIONAL utilities and panel vans.  These are the vehicles that give you the best of all worlds. Comfort, capacity and styling are finely balanced.  These are the vehicles that will pull a concrete mixer or tow a caravan and look smart doing both.  Sure they're tough, that's the way IH builds its products. Stack up to 20 cwt. on the smallest model and you're in business.  And while they enjoy all the rough and tumble work you can put them to, they will swiftly and surely whisk you and your family off in style and comfort for a weekend away.  Operate a fleet of utilities or panel vans? Or

perhaps you need just one — one that can double as pleasure transportation when off duty. Discover why INTERNATIONAL pleases both the tradesman and the man on the land, the small business man and the firm that buys by the dozen.  See how INTERNATIONAL utilities and panel vans drive easily, ride comfortably, work wonderfully and service simply.  You have three utilities and three panel vans to choose from — one of each being a four wheel drive for the man whose work takes him off the beaten track. (C-1100 Ute. and P.V., C-1200 Ute. and P.V., C-1300 4 x 4 Ute. and P.V.)  All the features you need are the features you get in INTERNATIONAL utilities and panel vans.

## for your safety

Low pedal pressure, power assisted brakes on all models. Big lining area drum type on the C-1200 and the C-1300 4 x 4. Exclusive on this class of vehicle, 12 in. disc brakes on all wheels of the C-1100 — for sure, straight line stops every time.  Spacious all-stool cab with large glass areas for maximum visibility.  Wide "Zone Toughened" windscreen — in event of breakage retains a see-through area in front of the driver.  Effective windshield washers and big area two-speed wipers for all-weather vision.  Dished, safety-type steering wheel.  Seat belts (optional).

## for your convenience

Full calibrated, complete instrumentation.  Light, responsive, naturally positioned controls.  Big, centre mounted glove box and ash tray.  Dual sun visors.

## for your comfort

Deep cushioned, fully adjustable seats.  Attractive, durable, pleated linings.  Front and rear shock absorbers on the C-1100 and C-1300 4 x 4, front on the C-1200.  Cab heater/demister (optional).  Attractive cab trim.  Sunshield and weatherstrip (optional).

## capacity for you

**UTILITY BODIES:** Available in 7 and 8¾ ft. lengths — dependent on wheelbase, 4 ft. between wheel arches — standard sized sheets of material can be carried flat.  Drop-down tailgate has two main and two supplementary hinges — can be used to extend load space.  Wood and steel floor — protects both load and floor.  Ladder rack mounting points included in design.  Load protecting canvas tonneau covers — available for both bodies.  Low loading height.  Body separate from cab — frame flexing is not transmitted to cab.

**PANEL VANS:** 147 cu. ft. of load space available.  Double rear doors — can be held at 90° or 180°.  Extra seating and/or special equipment easily installed.  All steel construction with double skin lower walls — prevents loads causing unsightly bumps on outer skin.  Wood floor with steel skid strips — protects floor and load.  Sleek, clean design — adds prestige to your business and is admirable for signwriting.

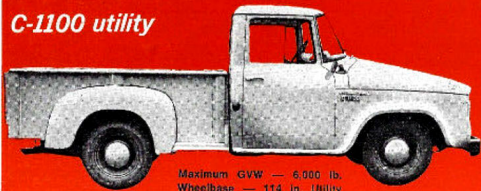
## performance for you

Fierce 142 BHP six cylinder INTERNATIONAL 6-261 petrol engine standard on all models.  Engine develops 241 lb. ft. of torque at 1,800 RPM — power and torque ratings give fast acceleration characteristics under full load conditions as well as sheer lugging ability in each gear.  Engine has positive crankcase ventilation and is designed for best balance of economy and power.  11 in. heavy duty clutch.  Smooth, three-speed synchromesh column shift transmission on C-1100 — optional for C-1200 panel van.  Four-speed, close ratio synchromesh transmission on C-1200 and C-1300 4 x 4, optional on C-1100 — well chosen ratios together with engine power cuts down on excessive gear shifting.  Hypoid rear axles — induction hardened axle shafts, semi-floating on C-1100 and full floating on C-1200 and C-1300 4 x 4.  Alternators standard on all models.

## strength for you

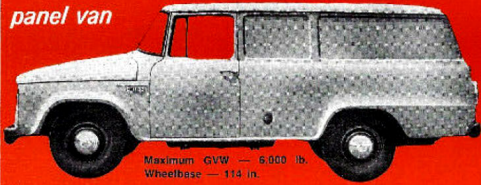
Tough pressed steel channel chassis frames — cross members tie side-rails together, formed channel front bumper gives additional strength and rigidity.  No major units are suspended from sheet metal.  Spare tyre carried under frame at back of vehicle — easy to get at but does not infringe on load space.  Cabs and bodies constructed from heavy gauge steel.  All components and complete vehicles tested before release by IH at its Product Engineering Centre, Geelong, and its 2,556 acre Anglesea Proving Ground.  12/12 warranty on all models.

**C-1100 utility**



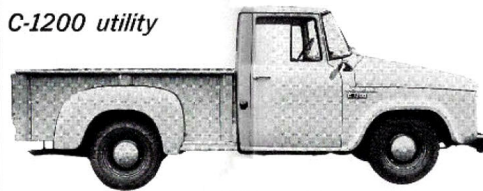
Maximum GVW — 6,000 lb.  
Wheelbase — 114 in. Utility  
body length — 7 ft.

**C-1100  
panel van**



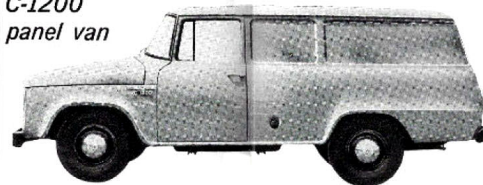
Maximum GVW — 6,000 lb.  
Wheelbase — 114 in.

**C-1200 utility**



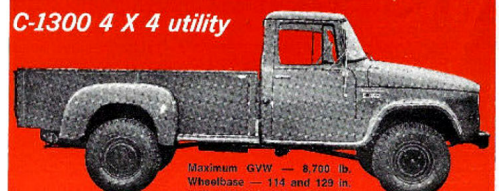
Maximum GVW — 7,600 lb.  
Wheelbase — 129 in. Utility  
body length — 8¾ ft.

**C-1200  
panel van**



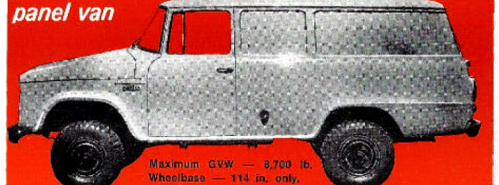
Maximum GVW — 7,000 lb.  
Wheelbase — 114 in. only.

**C-1300 4 X 4 utility**



Maximum GVW — 8,700 lb.  
Wheelbase — 114 and 129 in.  
Utility body length — 7 ft. on  
114 in. W.B. model; 8¾ ft. on  
129 in. W.B. model.

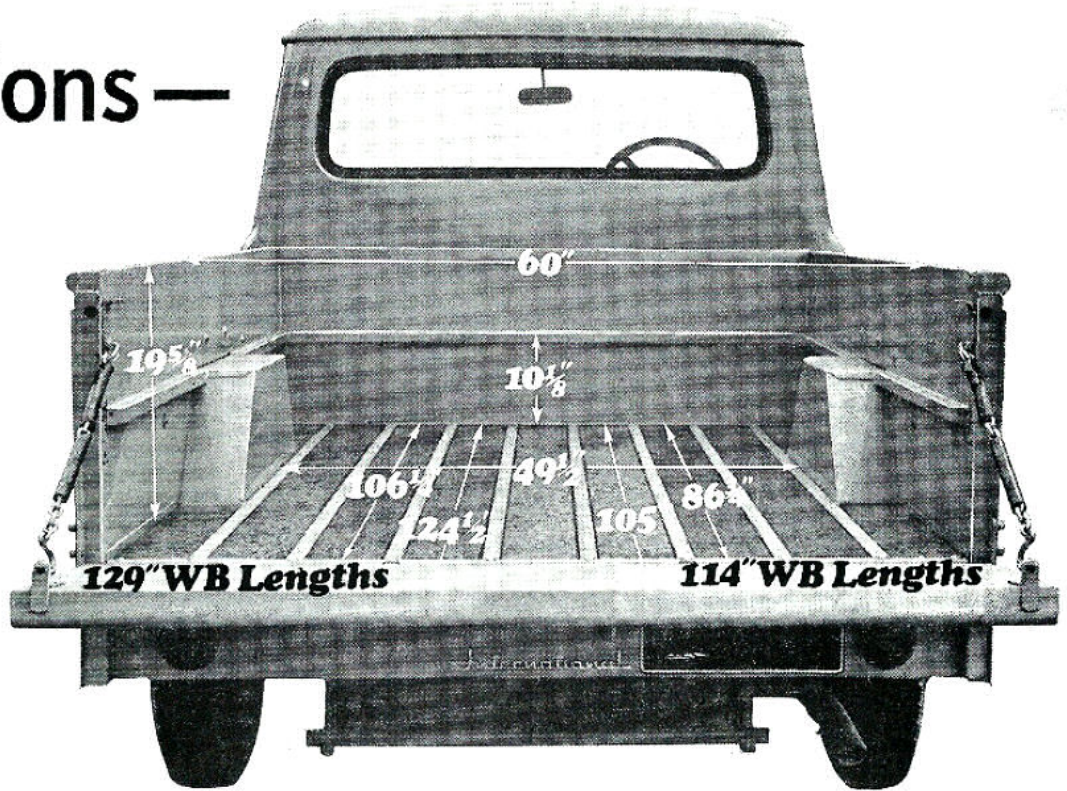
**C-1300 4 X 4  
panel van**



Maximum GVW — 8,700 lb.  
Wheelbase — 114 in. only.

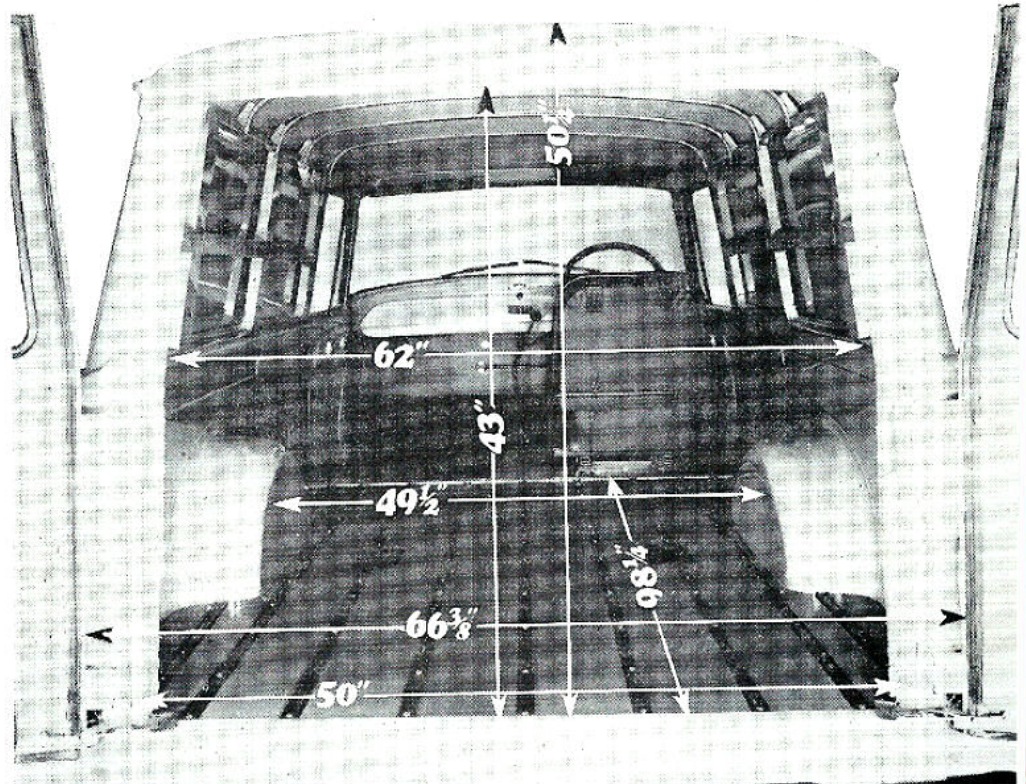
# Dimensions — utility

As the illustration shows, INTERNATIONAL utilities offer you big load spaces for your goods and equipment. The area occupied by wheel arches has been kept to a minimum and the strength and durability to a maximum. The utility body is separate from the cab so frame flexing is not transmitted to the cab.



# panel van

Whether you require a panel van for an ambulance, goods cartage, equipment housing or as a personnel carrier, the dimensions INTERNATIONAL panel vans have available make them ideal. Low loading height, ample interior width, length and height and all-steel construction make them spacious, durable vehicles.



In order that product improvements may be introduced at any time, specifications are subject to change without notice. Illustrations may include optional equipment.



**INTERNATIONAL HARVESTER  
COMPANY OF AUST. PTY. LTD.**  
(Incorporated in Victoria)

