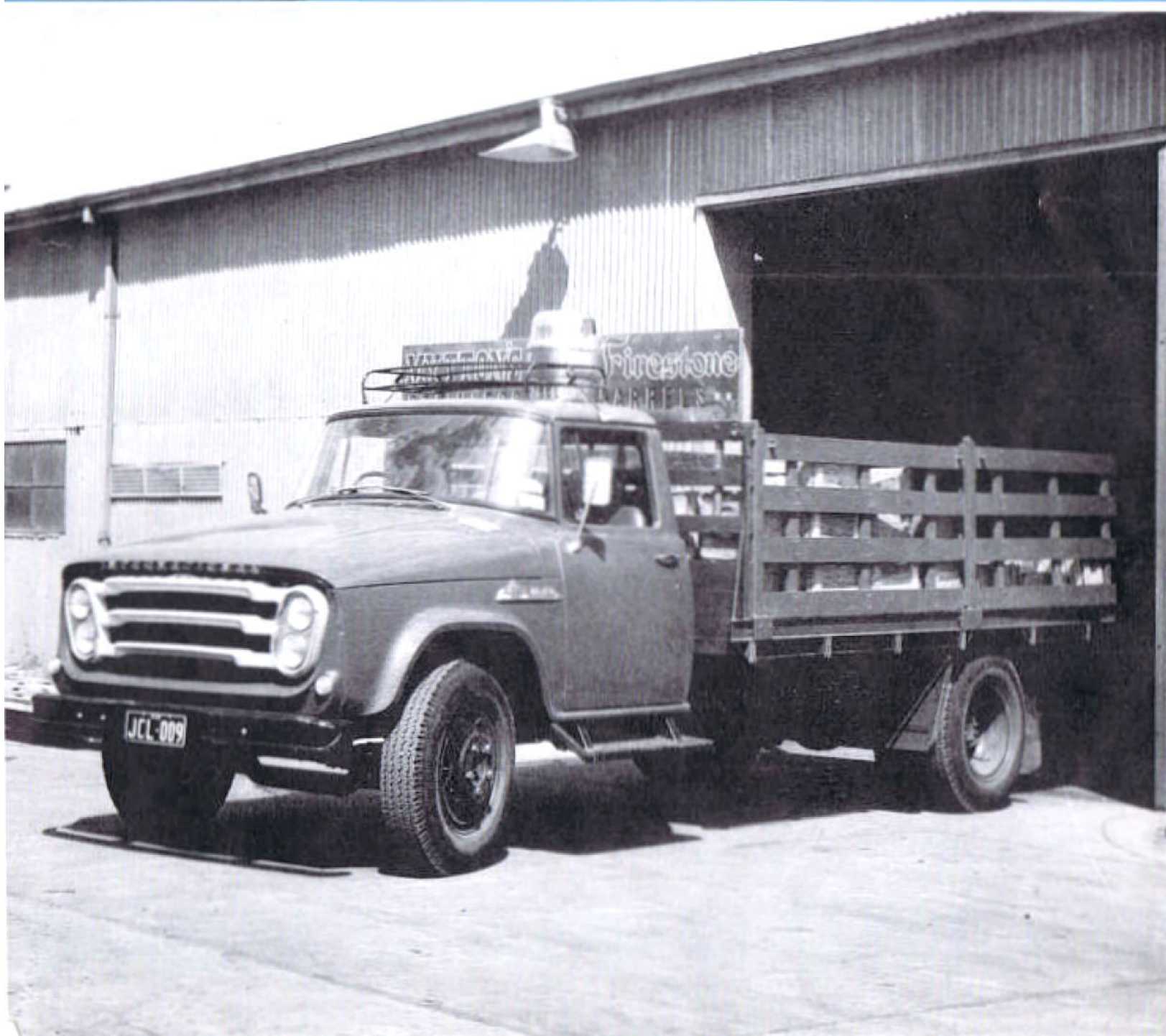




*QUALITY  
ALL THE  
WAY*

# INTERNATIONAL MOTOR TRUCKS

AB SERIES MODELS AB-160/162





# ESSENTIAL INFORMATION MODELS AB-160/162

## weight ratings

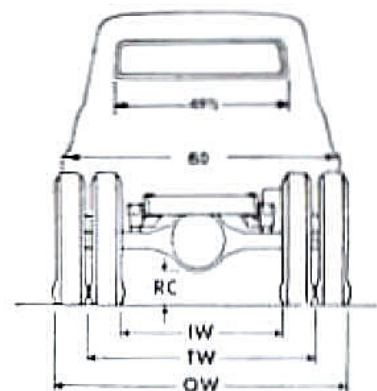
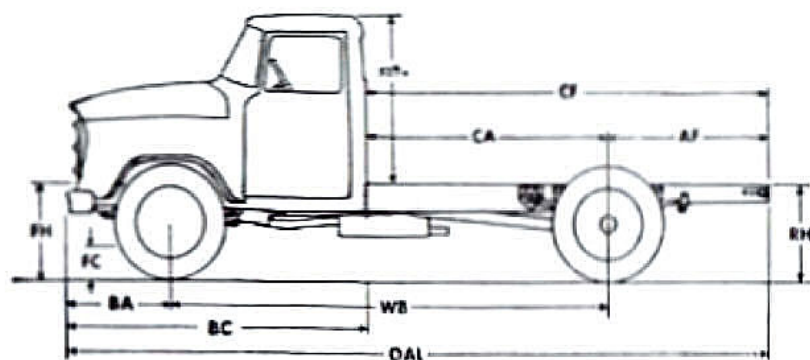
Wheelbase, inches	153	171	189
Gross vehicle weight, lb.	AB-160 19500	19500	19500
	AB-162 20500	20500	20500
Gross combination weight, lb.	AB-160 33000	33000	33000
	AB-162 34000	34000	34000
Payload, inc. body weight, lb.	AB-160 14021	14005	13659
	AB-162 14844	14813	14451
Cab and chassis weight, inc. oil, water, fuel & spare tyre, lb.:			
Front axle	AB-160 2869	2868	3156
Rear axle	AB-160 2510	2527	2691
Total	AB-160 5479	5495	6847
Front axle	AB-162 2996	3064	3245
Rear axle	AB-162 2660	2623	2804
Total	AB-162 5656	5687	6049
Axle capacities, lb.:			
Front	1500	1500	1500
Rear	AB-160 14000	14000	14000
Rear	AB-162 13000	13000	15000

## chassis dimensions, inches

Wheelbase	(WB)	153	171	189
Overall length inc. bumper	(OAL)	245 5/16	261 5/16	281 5/16
Back of cab to rear axle	(CA)	84	102	120
Rear axle to end of frame	(AF)	56	56	56
Frame length from back of cab	(CF)	140	158	176
Bumper to front axle	(BA)	36 5/16	36 5/16	36 5/16
Bumper to back of cab	(BC)	105 5/16	105 5/16	105 5/16
Height to top of chassis frame, 8.25-20 tyres:				
Front loaded	(FH)	30 5/16	30 5/16	30 5/16
Rear loaded	AB-160 (RH)	31 15/16	31 11/16	31 11/16
Rear loaded	AB-162 (RH)	31 5/8	31 3/16	31 3/16
Rear empty	(RH)	35 9/16	35 1/2	35 1/2

### Road clearance, 8.25-20 tyres:

Front axle	(FC)	11 3/16	11 3/16	11 3/16
Rear axle	AB-160 (RC)	10 3/8	10 3/8	10 3/8
Rear axle	AB-162 (RC)	9 3/4	9 3/4	9 3/4
Maximum width (external step)		86 1/2	86 1/2	86 1/2
Overall width (rear axle)	(OW)	86 3/8	86 3/8	86 3/8
Tread, front wheels	(FW)	63 3/16	63 3/16	63 3/16
Tread, rear wheels	(RW)	64 3/8	64 3/8	64 3/8
Inside width	(IW)	48 3/8	48 3/8	48 3/8
Turning radius, ft.:				
To centre line of tyre		25 1/2	28 1/2	28
With bumper clearance		27	29 3/4	29 1/2



## standard specifications

**FRAME:** Pressed steel channel 9" x 3" x 1/4". Inverted 9 1/4" x 3 1/4" x 1/4" C-type reinforcement on 109" wb. models.

**ENGINE:** International AOD-264, six-cylinder valve-in-head type, 3 11/16" bore, 4 1/8" stroke, displacement 264.33 cu. in. Compression ratio 7.0 to 1. Horsepower—R.A.C. rating 32.6 max. brake 142 @ 3800 r.p.m. Max. torque 229 lb. ft. @ 2400 r.p.m. Four steel-back, precision, removable-shell main bearings with max. projected area of 16,502 sq. in. Sodium-cooled exhaust valves. Ratio call inlet and exhaust valves. Exhaust-valve inserts.

**LUBRICATION:** Full pressure to all main, connecting-rod and camshaft bearings. Full-flow oil-filter system with removable-cartridge. Crankcase capacity 9 pints (net).

**COOLING SYSTEM:** Centrifugal pump, balanced circulation. V-belt driven. Fan-and-tube radiator. Large-capsule type thermostat. Capacity, entire system, 13.5 quarts.

**ELECTRICAL SYSTEM:** 12-volt. Vacuum-control, full automatic distributor. Battery 61 amp. hr. capacity, 30 amp. generator. Four sealed-beam headlights, parking lights located below headlights, incorporating flashing turn indicators.

**FUEL SYSTEM:** Horizontal diaphragm, camshaft-driven fuel-pump. Downdraft carburettor. Oil bath air-cleaner. Fuel tank 17 1/2 gallon, located under cab skirt, right side.

**CLUTCH:** 11" diameter, single plate. Vibration damper. Lining area 108.5 sq. in.

**TRANSMISSION:** Synchromesh, mounted in unit with engine. Four speeds forward, ratios—6.398, 3.092, 1.686 and 1.00 to 1. One reverse speed, ratio—7.820 to 1. P.T.O. opening on right side. Lubricant capacity 3.7 pints.

**PROPELLER SHAFT:** Dynamically balanced, heavy-gauge steel-tubing. Needle-bearing, anti-friction universal joints.

**AXLE, FRONT:** Forged, heat-treated, drop-centred I-beam. Steering knuckles of drop-forged, heat-treated, nickel-chrome-molybdenum steel.

**AXLE, REAR—AB-160:** Full-floating, single-reduction hypoid type. Hetchkiss drive, nickel-chrome-molybdenum steel axle shafts. Heat-treated, one-piece, tubular banjo-type steel housing. Pinion straddle mounted on roller bearings. Ratio—6.667 to 1.

**AXLE, REAR—AB-162:** Full-floating, two-speed, electric-shift, spiral bevel type. Four pinion planetary-spir reduction gears (for low ratio). Hetchkiss drive. Chrome-molybdenum-steel axle shafts. Heat-treated, one-piece, tubular banjo-type steel housing. Pinion straddle-mounted. Ratios 6.33/8.81 to 1.

**BRAKES, HAND:** External contracting on propeller shaft. Lining area 57.14 sq. in.

**BRAKES, SERVICE:** Hydraulic—vacuum booster. Both primary and secondary shoes equally effective in either forward or reverse direction. Oil bath vacuum-line air-cleaner. Total effective lining area 375.8 sq. in.

**SPRINGS:** Semi-elliptic. Front 45" x 2 1/4". Rear 34 1/2" x 3". Auxiliary 34" x 3".

**STEERING:** Semi-reversible cam and roller-mounted twin-lever gear. 18" diam. safety type steering wheel. Ratio 22 to 1.

**WHEELS:** 5-stud, disc-type.

**TYRES:** 8.25-20, 10 ply, duals rear.

**CAB:** Full width, padded seat and back cushions with vinyl-coated covering; seat adjustable 4". Safety glass windshield, windows and silent. Vent window wings. Safety type door latches, left-door lock. Large externally mounted rectangular rear-vision mirror. Dual electric self-parking windshield wipers. Dual sun-visor. Ash-tray. Glove compartment. Vinyl-coated headliner. Heavy-duty insulated floor mat. Concealed upper steps.

**STANDARD EQUIPMENT:** Cab and chassis, front bumper, spare wheel, tool kit and jack.

**FINISH:** Frame, wheels, bumper and external steps, black. Choke of six colours on fenders, hood and cab.

**COLOURS:** Granite grey, Goulburn green, Broome blue, Mullarbar beige, Harvester red, Harvester green.

### OPTIONAL EQUIPMENT:

Frame:	Chrome front bumper.
Cab:	Cowl with windscreen and header-panel.
	Cowl with windscreen, header-panel and doors.
	Crew cab. Parcel shelf.
Tyres:	AB-160: 7.50-20, 8 ply, 14,000 lb. G.V.W.
	AB-162: 8.25-20, 12-ply.

In order that product improvements may be introduced at any time, the right is reserved to change specifications without notice. Illustrations shown may include non-standard items.