



International Scout four-wheel-drive Traveltop

RATINGS GROSS VEHICLE MASS (GVM) — tonne (lb.)

MODEL	GVM	FRONT AXLE RATING	REAR AXLE RATING	FRONT AXLE	FRONT SPRINGS	REAR AXLE	REAR SPRINGS	TYRES
TRAVELTOP	2.81 (6200)	1.45 (3200)	1.41 (3100)	STD	STD	STD	STD	H78 x 15 LRB

STANDARD EQUIPMENT

AXLE, FRONT

FA-44, 1.45 t (3200 lb.) capacity, driving. Hypoid single reduction; 216 mm (8.5 in.) ring gear. Ratio: 3.07 to 1. Automatic front wheel locking hubs.

AXLE, REAR

RA-18, 1.59 t (3500 lb.) capacity. Hypoid single reduction; 216 mm (8.5 in.) ring gear. Semi-floating, induction hardened shafts. Three-piece cast iron housing. Ratio: 3.07 to 1.

BRAKE, PARKING

Mechanical control to rear service brakes. Cable actuated, foot pedal actuated. Total area: 657 cm² (101.8 sq. in.).

BRAKES, SERVICE

Vacuum power assisted. Dual operation hydraulic, with warning light, self adjusting. Front disc — 298 mm (11.75 in.) rotor with 20 cm (3.1 in.) piston.

Total swept area: 1458 cm² (226 sq. in.).
Rear drum — 208 x 57 mm (11.03 x 2.25 in.).
Total lining area: 657 cm² (101.8 sq. in.)

BODY

Steel welded construction. Removable steel roof. Dip tank applied primer, undercoating. Energy-absorbing steering column. Left and right air intake vents. Inside mounted tyre carrier. Fresh air heater/demister. Windshield mounted day/night rear view mirror. Two-speed electric windscreen wiper and washer. Suspended brake, clutch and accelerator pedals. Cargo area vinyl mat. Front floor mat. Headliner/side trim panels. Front bucket seats. Folding rear seat. Console for bucket seats, with lockable storage bin. Ammeter, oil, water and fuel direct reading gauges. Push-button door locks. Sliding rear quarter windows. Inside hood release. Steel-framed wing vents and roll-down windows. Push-button tailgate latch. Locking latch on lift gate. Locking steering column with integral turn signal, hazard and ignition switch. Ash tray in instrument panel.

CLUTCH

280 mm (11 in.) angle link. Heavy duty. Woven asbestos. Mechanical control. Lining area: 798.7 cm² (123.8 sq. in.).

COOLING SYSTEM

6.3 kPa (14 lbs/in²) pressurised cross-flow radiator. 20.8 litres (36.6 pt.) system capacity. Radiator frontal area: 3077 cm² (477 sq. in.).

ELECTRICAL SYSTEM

12 volt, 37 amp, 10S1 alternator. 62 amp-hr, 54-plate battery. Dual stop and tail lamps. Directional signals front and rear.

Reversing lights, traffic hazard switch. Cigar lighter. Dual electric horns. Courtesy lights — dash mounted. Dome light, cargo area light. Parking brake warning light.

ENGINE

International V-345A, petrol, V-8.
Max. net power: 121.5 kW (163 BHP) @ 3600 RPM.
Max. net torque: 396 Nm (292 lb./ft.) @ 2000 RPM.
Displacement: 5.6 litre (344.96 cu. in.). 8.28:1 compression ratio.
R.A.C. horsepower rating: 48.1. Dry type air cleaner, full-flow oil filter. Dual exhaust. Electronic ignition. Aluminized muffler. Automatic choke.

FINISH

Chassis: Black.
Cab: Choice of any standard IH colour.

FRAME

Steel box section 101.6 x 76.2 x 3 mm (4 x 3 x 0.12 in.).
Section modulus: 53.7 cm³ (3.28 cu. in.).
Chrome front and rear bumper. Wheelbase 2.54 m (100 in.).

FUEL TANK

72 litres (16 imp. gal.), all steel, underslung rear of body.

STEERING

S-8 steering gear. Collapsible column with 432 mm (17 in.) steering wheel.

SUSPENSION

Semi-elliptic steel leaf springs.
Front: 50.8 mm x 1.09 m (2 x 43 in.), 1.45 t (3200 lb.) capacity.
Rear: 50.8 mm x 1.42 m (2 x 56 in.), 1.45 t (3200 lb.) capacity.
Front and rear shock absorbers: 30 mm (1.19 in.) bore.

TRANSMISSION

T-428 4-speed manual transmission, synchromesh direct drive, floor mounted gear shift. Ratios: 4.02, 2.41, 1.41, 1.00, REV. 4.42.

TRANSFER CASE

TC-145 2-speed transfer case with warning light. Ratios: Low 2.03. High 1.00:1.

WHEEL AND TYRES

Single front and rear with spare. H-78 x 15 LRB tubeless tyres. 5-stud disc wheels with 6.00 JK rims. 140 mm (5.5 in.) bolt circles. Screw Jack. Full wheel trims (stainless steel).

OPTIONAL EQUIPMENT

NOTE: The following optional equipment is only available when specifying automatic transmission and as such is mandatory.

AXLE, FRONT

FA-44 with 3.07:1 ratio.

AXLE, REAR

RA-18 with 3.07:1 ratio.

COOLING SYSTEM

6.3 kPa (14 lbs/in²) pressurised cross-flow radiator with integral oil cooler. 20.8 litres (36.6 pt.) system capacity. Frontal area: 3077 cm² (477 sq. in.).

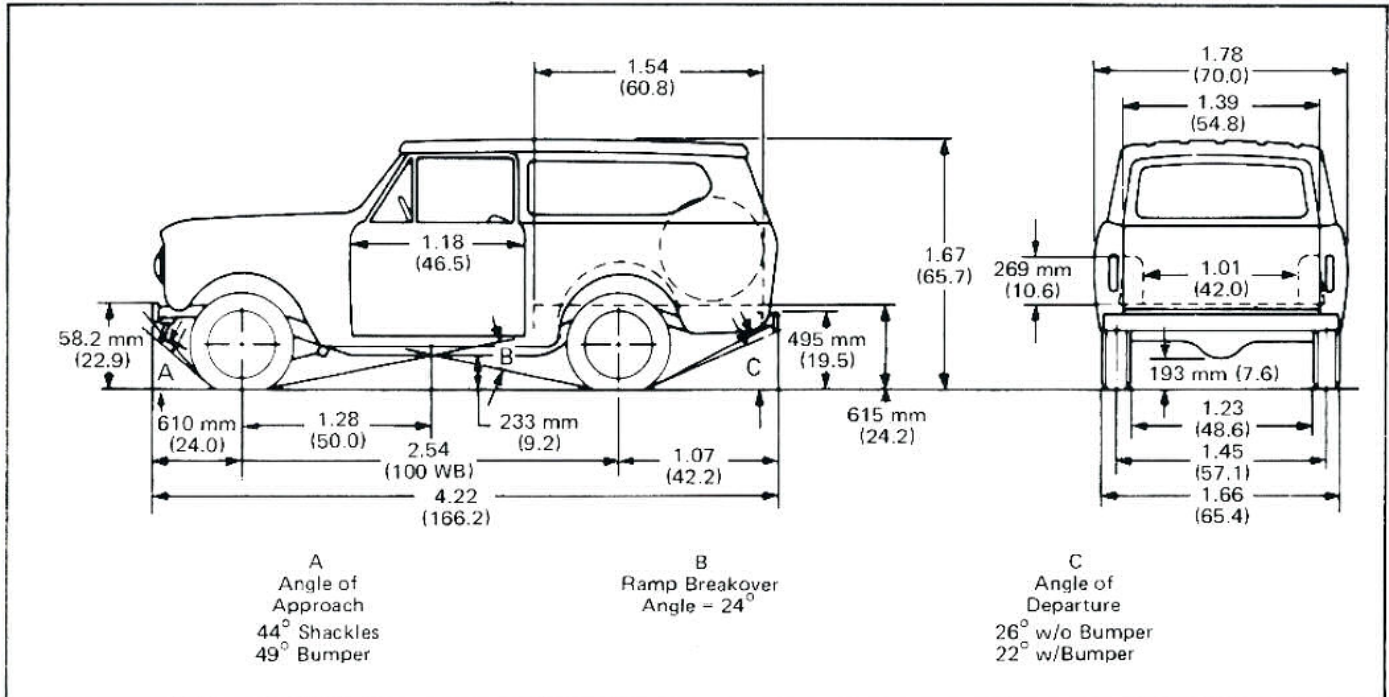
TRANSMISSION

T-407 3-speed automatic transmission with torque converter. Floor-mounted gear shift.

RATIOS: LOW, 2.45:1; DRIVE 1, 1.45:1; DRIVE 2, 1.00:1; REV, 2.2:1.

dimensions & mass

Traveltop



Dimensions and weights shown are with standard components

Chassis mass kg (lb.)†

Turning diameter m (in.)

MODEL	Front	Rear	Total	MODEL	To Outside of Tyre	With Bumper Clearance
4 x 4 (manual)	1080 (2381)	790 (1751)	1870 (4122)	4 x 4	10.31 (33 ft. 10 in.)	11.07 m (36 ft. 4 in.)
4 x 4 (automatic)	1050 (2315)	780 (1720)	1830 (4035)			

† Wet weight.

In order that product improvements may be introduced at any time, specifications are subject to change without notice.

Illustrations may include optional equipment. Metric and Imperial quantities shown are equivalent within the implied accuracy.



YOUR INTERNATIONAL DEALER:

PRICE QUOTED:



A SPECIAL BRAND OF FINANCE

INTERNATIONAL HARVESTER AUSTRALIA LIMITED.

A-66-G (Aug. 1976)