

INTERNATIONAL



The S-Line from International

International S-Line

Designed for the
people who drive
trucks, who
service trucks,
and whose
business is
profitability.

S-Line Trucks.

S-Line with Designs on Tomorrow

The rugged but handsome bonneted S-Line 2600 Series international trucks were introduced to the Australian trucking industry only after an exhaustive study and development program that determined S-Line incorporated the most commonsense refinements and improvements necessary to meet the challenges of modern-day trucking.

Built for medium heavy to heavy duty operation, S-Line is of US origin but there the similarity ends.

For months prior to the first prototypes arriving in Australia, engineers from IH Australia were resident in the USA where they were engaged in design work that was to make the Australian version of the S-Line ideally suited to our local conditions.

When the first prototypes arrived in Australia they were turned over to the IH truck engineering team — the most professional truck engineering team in Australia today. This team took the prototypes apart and tortured their components under the most arduous but simulated conditions at the Company's Anglesea Proving Ground. They then put them into the hands of professional operators before they were released for day to day trucking operation.

The result is a line of trucks that offers the best of driver comfort in a range of chassis, engine, transmission and axle configurations that enable compatible matching of vehicle specifications to job applications. Applications are as varied as dump trucks, agitators and logging to intrastate deliveries or interstate operations where maximum G.C.M. and maximum fuel economy is important.

S-Line — The Style of Tomorrow

Designed to meet today's changing needs, and to work into tomorrow, with less cost, increased profits and reduced down-time.

We didn't just update old ideas — we engineered a new kind of truck — from the ground up. We built in exclusive International features to bring you a truck designed to be the toughest most efficient in its class.

S-Line is designed to handle almost any job in its category. Over a wide range of transport needs there's an S-Line chassis built right for you. Whichever of the eight models you choose, you'll get the benefits of work-proven, heavy-duty features inside.

Job-matched power trains ensure each S-Line chassis gives that big performance expected in this class truck.

Opposite: The International S-Line 2600 Series is available in eight models. Dependent on engine/transmission/axle combinations, there is an S-Line truck ideally suited to your trucking applications, whether you are carrying cattle, or on short-haul deliveries.





New Comfo-Vision Cab

A major feature of S-Line is the cab — a cab that welcomes drivers with space and comfort. There's plenty of knee and leg room to stretch out, there's heating, ventilation and optional integral air conditioning to ensure driver comfort, no matter what the outside elements offer.

A Clear View of the Road

As you sit comfortably in the individual driver's and passenger seats, the view of the road ahead is distortion-free through the two-piece flat windscreen which is easily replaced at low cost.

The sloping bonnet of the S-Line allows maximum visibility of the road directly ahead, for more safety, especially when driving in traffic.

The air intake scoop on the bonnet is designed to pick up a reverse vortex air flow from the windscreen. It provides clean fresh air that's protected from dirt and road-level exhaust fumes. An integral fan distributes a driver-controlled high-pressure flow of fresh air throughout the cab.

Even the windscreen wipers are highly efficient with the washer nozzles mounted on the wiper arms to apply wiper fluid directly to windscreen for better, more even windscreen washing.

S-Line Offers Strength and Safety

Strength, safety and driver comfort are three major, high-priority considerations given by International Harvester to the design of the S-Line cab. By using fewer and larger cab components, the number of welded joints has been reduced. A major factor in the durability of the cab is the one-piece steel door frame which surrounds the entire opening combined with the one-piece door inner panel, the steel frame improves cab structure and sealing, to keep out wind, weather and noise.

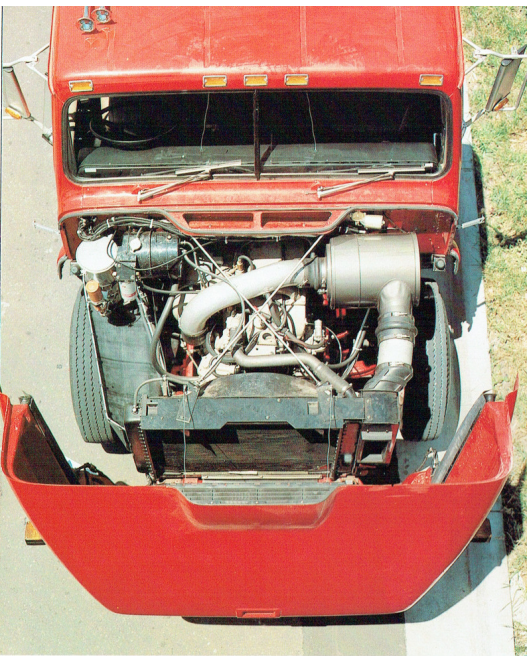
All panels of the S-Line cab are protected against corrosion with the use of zinc-coated steel. Zinc primer is used on the dash panel and door inner panels. In addition, the cabs are subjected to the International Electro-Phoretic Deposition undercoating and Acryli-armour enamel top coating. A six-stage cleaning process prepares the cab, then the undercoat is applied in a similar manner that metal is chrome plated. The cab is totally submerged in paint that penetrates everywhere, inside box sections, pre-drilled holes, everywhere. Then it is baked to provide a high resistance to rust, corrosion and chipping. Tough, durable, Acryli-armour is sprayed over this barrier. Baked too, it becomes highly resistant to chipping with a long lasting shine.



Top: The fact that the International S-Line cab is a complete design concept is emphasized by the choice of cross flow radiator to make maximum use of the available bonnet width. It also gives a short bonnet length for full visibility, but enables an impressive overall appearance.

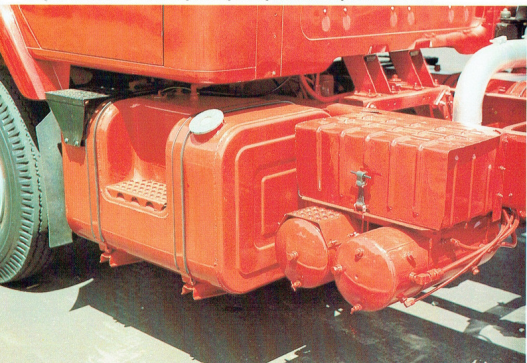
Above: The 2.28 metre width of the all-steel cab of the S-Line is a comfort bonus for the operator, who will welcome the abundance of knee, leg and shoulder room available to him. Driver comfort is improved through the air system for heating, ventilation and optional air conditioning.

Opposite: Top of the Line — SF2670/NTC350 — with its standard RA435 rear axle of 18.1 tonne capacity, is capable of handling most on/off highway applications to 45 tonne GCM. For severe duty applications, the 20 tonne capacity RA436 rear axle is available. For vehicles fitted with this axle/engine combination, the standard GCM is extended to 54 tonne.



Above: Minimum effort only is required to tilt the fiberglass hood through its full 72° arc.

Below: Easy access to the cab is possible through the use of large step tanks. The heavy duty batteries are protected from the weather by a sturdy battery box with easily removable cover.



Choice of Five Engines

Select from five in line engines with power rates from 156 kW to 261 kW. Engines from both IH and Cummins are designed to deliver full power with fuel economy and long engine life.

Five transmissions are available to perfectly match your choice of power. Transmissions with matched power ratios, to give you power and road speed where and when needed.

Big-capacity, International-built, single-drive 10.4 tonne capacity rear axle or Rockwell tandem drives with axle ratings to 20.0 tonne are designed to handle high torque engines and high capacity loads with ease.

The cooling system of International S-Line utilizes a 7742 cm² cross flow radiator and independently-mounted deaeration system. The cross flow radiator with bolted tanks is above-frame mounted for extra strength and support. Cross flow keeps the hood low for visibility by taking advantage of the vehicle's width, not height. The deaeration system removes all bubbles from the coolant to keep the engine free from hot spots and safe from possible damage.

For added engine protection and cooling, IH engineers have fitted a fan clutch as standard with all engines except the DT466B. The Rockford modulated fan clutch can aid fuel economy, keep noise levels down, and protect the engine from overheating damage. Capable of operating at any speed from off or idle to 100 percent of input speed, the Rockford fan gives the exact amount of cooling needed by the engine and no more.

Wherever you look into these aerodynamically-styled S-Line vehicles, you find time-saving, money-saving, headache-saving innovations.

The approach to parts standardization and modular systems design means simplicity, ease and speed of service, reduced inventory, less down-time and more returns.

Sturdy Chassis Construction

The in-built toughness in every International S-Line truck assures you of day-long confidence of operation under the most arduous conditions. Chassis with wheelbases over 4.67 metres come with a standard full-length "L" frame reinforcement making them ideal for on/off highway type operations.

Because IH chassis are engineered to twist and move while in operation, International engineers selected premium SAE grade 8 flanged head bolts for the frame of the S-Line. This design enables the bolts to withstand higher torque than conventional bolts

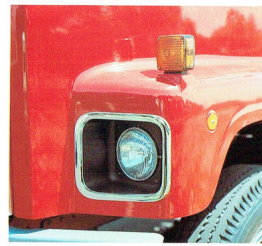
and as a result, are highly resistant to thread stripping. Bolted construction allows for the chassis to twist within its design limits without building up stress points that would otherwise fatigue and ultimately cause chassis failure.

Electrical Maintenance Made Easier

The electrical system has been organized into five major component systems. Each is self-contained with fewer, more accessible and better-protected parts that are easier to service. Fault-finding is made easier with new understandable circuit diagrams. Instrumentation has been engineered for quality and reliability. Five screws retain the front instrument panel which provides access to gauges for full servicing from the cabin. The number of parts has been reduced by the use of one flex printed circuit board that replaced 50 parts and one electrical positive locking connector that replaces 25 parts.

Serviceability Saves Dollars

IH recognizes you make maximum profit through minimum down-time. So when you do have a vehicle off the road you need the right kind of service — last service. S-Line has been designed with quick, easy-access components, modular systems and parts standardization. Designed to spend less time in the workshop, and more time on the road where it earns money for you. S-Line is backed by the nation-wide IH dealer service and parts organization, to assure more up-time and less down-time.



Left: Quartz halogen headlights with front parking lights are stylishly recessed in the front fender where they are less liable to accident damage.

Bottom left: Whether it's day to day service or a major overhaul you'll appreciate the time saving walk-up, easy access servicing of the S-Line.

Below: Exclusive recessed cab marker lights are protected from damage, important in construction-building-logging type vehicles.



Here are the three basic schemes of the 12 colour co-ordinated appliques available.

Applique colour combinations are:
WINTER WHITE/FIRE ORANGE
WINTER WHITE/ACCENT BLUE
WINTER WHITE/ACCENT GREEN
OMAHA ORANGE/FLAME RED

International S-Line has been built around a truck that has been work-proven on two continents. In the development stages in Australia, selected S-Line models were subjected to a carefully-monitored test program. They were tortured at the International Harvester's Proving Ground at Anglesea, Victoria. They were put through their paces over the Belgium block and the chassis twist course tests designed to torture the strongest chassis to the point of failure. Day and night these vehicles were subjected

to sustained high speed tests, ride simulator and shaker tests.

Combined together these tests represented the equivalent of over a million of miles of brutal punishment to the S-Line chassis.

When the test program was completed, they were further proved in fleet owner operations under actual working conditions.

The result . . . S-Line is one of the toughest trucks International has ever put on the road.

You are never far from an International truck dealer. Conveniently located in all states, these privately owned dealerships offer specialised advice, parts and service to look after your International truck. With today's specialised transport industry requirements, the need for vehicles tailored to individual applications is becoming more important. International truck dealers have the knowledge and expertise to assist you in your correct choice of the right International truck. Parts and service back-up are as important to International as they are to the operator. Our computerised parts system, together with trained service mechanics at conveniently located dealerships ensures downtime is kept to a minimum. Contact your local International dealer now and find out why International S-Line are the trucks for you and for your kind of application.

IMPORTANT

It is believed that the illustrations, information and specifications presented and referred to herein were correct at the time this publication was approved for printing. ■ Metric and Imperial quantities shown are equivalent within the implied accuracy. ■ International Harvester Australia Limited reserves the right, subject to any statutory enactment of Australia and/or a State or Territory thereof, and/or the regulations of any competent authority which may apply from time to time at their or its discretion, and without notice, to discontinue or change the specification or design of the products referred to herein and any options therefore at any time without incurring any liability whatsoever to any purchaser thereof. ■ Some of the items illustrated or referred to herein are optional at extra cost and may be required in combination with other options. ■ From time to time some of the items of standard, optional or available equipment referred to, described or illustrated in this brochure may not be available or reasonably available either immediately or at all either in Australia or elsewhere. Accordingly, the availability at any particular time of any of the products or items of standard optional or available equipment referred to, described or illustrated in this brochure will be dependent upon the local and/or overseas supply situation prevailing at that time. ■ We strongly recommend you consult your IH Dealer, Distributor or Company Branch to ensure you obtain the latest information on models, specifications, features, availability and prices.

IH International
INTERNATIONAL HARVESTER AUSTRALIA LIMITED

CHECK IHCC
FIRST FOR
FINANCE

