

INTERNATIONAL



T-Line

156 kW - 261 kW

Follows a great tradition

International T-Line The truck to meet the changing needs of the road transport industry

International Harvester through its commitment to technological and product leadership has taken up the challenge to produce a truck to meet the ever changing needs of the road transport industry and the requirements of the cost conscious eighties. The result of that challenge is the International T-line, designed to effectively reduce downtime, reduce inventory costs and improve driver efficiency.

T-line is the culmination of design and product knowledge gained in over 70 years of world wide truck manufacturing experience. Since the production of Australia's first locally designed cab-over-engine truck, the AACO Series in 1964, International Harvester has continually updated and improved its product to become Australia's leading manufacturer of commercial vehicles and number one for vehicle sales in the over 2 tonne class.

Specification matched applications

Extensively proved for Australia's roads at the International Harvester proving ground at Anglesea

Victoria the T-line offers a range of engines, from 156 kW to 261 kW, transmissions and axle configurations that can be ideally matched to your type of operation.

Safety, strength and driver comfort have been prime considerations incorporated into the T-line cab. The easy step into the cab introduces the driver to home found comforts. Comfortable in his fabric inlaid suspension seat he has a commanding view of the road ahead through the large one piece flat windscreen. The attractively presented wrap-around instrumentation console puts all instrument gauges in the natural line of vision and controls at his finger tips. With the extensive use of sound absorbing deep pile carpet, climate controlling heater-fresh air system the driver can truly feel at home.

If your need is for a medium heavy to heavy duty truck, 14.09 tonne GVM to 54 tonne GCM, then International T-line has been designed with your operation in mind.

With rising operational cost the Transport operator must look more and more at reducing costs. A major way is in vehicle selection. By selecting the correctly specified truck for the right application, that truck will be able to operate at maximum efficiency at all time and as a result reduce costs in fuel, repairs and trip times.



High component commonality.

All the technical knowledge, manufacturing ability and experience gained by the International Harvester Truck Group has gone into the production of International T-line. Designed to give the operator maximum time on the road, where it's earning money, T-line takes advantage of component commonality with the bonneted S-line. A 75% commonality of chassis componentry between the two models allows for savings in production costs, reduction of parts

inventory at the spare parts outlet, and at the multi-vehicle operators store. Another bonus is the high degree of parts commonality with ACCO-C cab. This all adds up to keeping costs at a low level for the operator.

156 kW to 261 kW of diesel power, nine, ten, thirteen or fifteen speed transmissions, single or tandem drive, 14,09 tonne GVM to 54 tonne GCM. These are just a few of the optional variations available with T-line 2600 series. Variations that ensure the right truck for the right

applications, no matter whether you require a single axle tray top for local delivery or a heavy duty low loader to work on permit load applications.

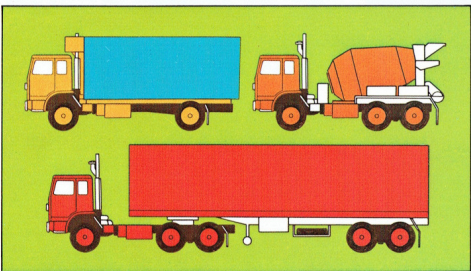
Driver efficient comfort cab.

Ask any truck driver after he's had 10 hours in the driver's seat how important driver comfort is in vehicle selection and it's odds on you'll get the same reply... it's of prime importance. If a driver is comfortable, and his surroundings are aesthetically pleasing then that driver is less prone to fatigue, becomes more efficient in his work and is able to concentrate on the job at hand, namely driving. International T-line has been designed to meet the driver's needs and to remain functional at the same time.

The forward entry cabin design allows the operator convenient easy entry to the cab. When seated in his individual, fabric inlaid, suspension seat the driver is in complete control. The controls, gauges and warning lights are mounted in an attractive wrap-around instrumentation console that allows at-a-glance reading of instrument dials, warning lights and finger tip use of controls.

Extensive use of thick pile carpet and panel linings ensures excellent sound and weather insulation, which together with the heater/demister and fresh air cooling system ensures the driver is comfortable no matter what the outside temperature.

Stowage of effects within the cab has always been a problem, usually too many things and not enough storage places, but not in International T-line. Directly behind the driver's and passenger's seat are large capacity storage compartments with a manifold pocket incorporated into the driver's side compartment. The passenger's side of the wrap-around console includes a deep glove box. Unscrewing two knurled screws lets you remove the lining of the glove box to expose the fuse box, electrical connections and circuit breakers.



Top: The optional custom trim package offered with the T-line cab enables the operator to quickly convert the cab into a sleeperette. By laying the seat backs forward, extensions fold out from under the locker doors to provide a base for the 635 x 101 mm mattress.

Above: Tray top or tipper, concrete agitator or cargo van, local or long distance haulage. No matter what or where you carry you can be sure there's an International T-line to meet your application. The low profile of the International T-line cab offers the operator the added bonus of improving vehicle performance by creating less wind resistance to conserve fuel and engine power.





T-line with stamina to go.

Twisting on the chassis bend test, pounding over the Belgium blocks, sustained high speed running on the loop or up to its axles in water, all carefully monitored tests carried out by International engineers to ensure T-line has the stamina to take the punishment to be expected from Australia's varied and arduous road conditions.

Choice of power

Five diesel engines, up to 261 kW, are offered with the International T-line.

In the T-2650 and TF-2650 the International DT-466B premium mid-range diesel is offered. This smooth-running 156 kW, fuel efficient, turbocharged diesel is of the six cylinder in-line design that is easy to service - it's also rebuildable.

The T-2670 is available with Cummins straight six diesels the

Formula 270 rated at 201 kW. These two engines are also available in the TF-2670 6 x 4 version together with the NTC 350 rated at 261 kW and fuel economy version Formula 300 also rated at 261 kW.

Large capacity engines need large capacity cooling, the tunnel design of the T-line cab allows for a large 7742 cm² radiator. The bolted construction radiator is fitted with a deaeration system to remove bubbles from the coolant to keep the engine free of hot spots and safe from possible damage.

For added engine protection and cooling, IH engineers have fitted a fan clutch as standard with all engines except the DT 466B. The Rockford modulated fan clutch can aid fuel economy, keep noise levels down, and protect the engine from overheating damage. Capable of operating at any speed from off or idle to 100% of input speed, the Rockford fan clutch gives the exact amount of cooling and no more.

Specifications to match the application.

Single or tandem drive, International or Rockwell, dependent on the T-line model selected you can choose rear axle/engine combinations to allow from 14.09 tonne GVM to 54 tonne GCM capacity. Single drive 10.4 tonne or tandem drives with ratings to 20 tonne that are designed to handle high torque engines and high

capacity loads with ease.

Different operating conditions, engine power and carrying capacities require different transmissions. Five Roadranger transmissions from Fuller have been selected by International to let you perfectly match your choice of engine.

Transmissions with ratios that enable you to haul that extra heavy load out of the quarry or run at highway speeds.

Tough, durable colour co-ordinated colour schemes.

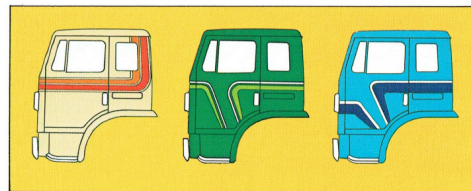
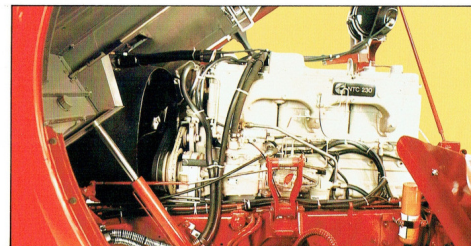
All panels of the T-line cab are protected against corrosion by the International Electro-Phoretic Deposition undercoating and Acryli-armour enamel top coating. This exclusive International process entails a six stage cleaning process to prepare the cab. The cab is then totally submerged in paint, in a similar manner that metal is chrome plated, so that every part, inside box sections and pre-drilled holes are penetrated by paint. To provide a high resistance to

rust, corrosion and chipping it is baked. Tough, durable, Acryli-armour is sprayed over this barrier. Again the paint is baked so that the long lasting shine of your T-line becomes highly resistant to chipping.

International T-line is available in an exciting range of standard colours or can be finished, at optional cost, in your own fleet colours. If you want to further enhance the appearance of your cab three basic schemes of 13 colour co-ordinated appliques are available.

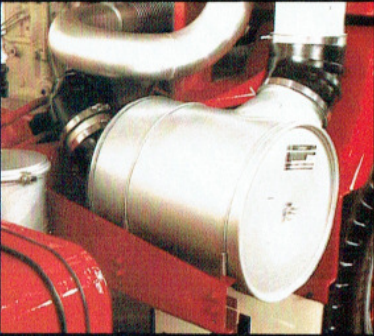
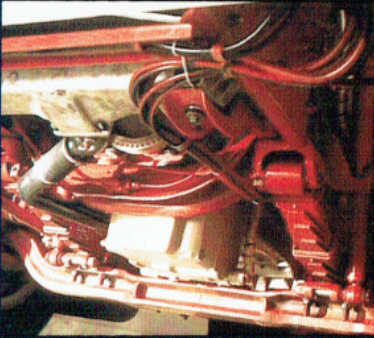
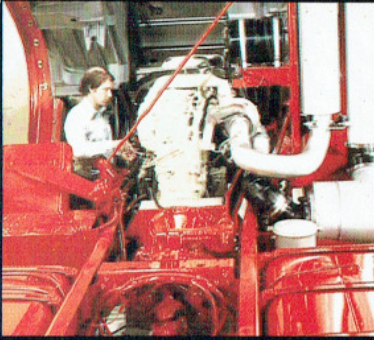
Walk-up servicing.

Release two interior cab pins, secure loose items in the cab, engage the hydraulic jack and pump to tilt the cab forward a full 45°, secure the safety catch and you are ready for quick and easy walk-up servicing. When you have finished servicing simply reverse the pump switch and pump, the cab is then hydraulically lowered - secure the cab pins and you're ready for the road again.



Top: From 156 to 261 kW the choice is yours. Straight six Cummins or International diesel engines with power to match your application.

Above: Illustrated are the three basic styles of the colour co-ordinated appliques available.



From the wheels up International T-line has been designed to remove the hassle from day to day service problems and to reduce down time. The wheel hubs of the 5.4 tonne capacity front axle are oil filled for maximum lubrication of the bearings and increased bearing life. The power assisted steering gear assures the driver of minimum effort at any speed.

Annoying leaks from the exhaust system are a thing of the past with the use of Torca clamps, which ensure proper fit and sealing at all pipe junctions. The readily accessible battery box and batteries ensure that daily maintenance checks are carried out and not overlooked. Daily oil and water checks are also made easy with

the rear mounted header/deaeration tank and rear engine located engine oil dipstick.

Dependent on the T-line model selected long range fuel tanks, up to 740 litre are fitted as standard, and it's not necessary to use that fuel when looking for professional service or parts back-up for your International T-line. A nation-wide network of International truck dealers is available to offer specialised advice, parts and service to keep your International T-line in top condition.

Why not call in at your nearest International dealer today and share his expert knowledge and experience in selecting the right International T-line for you.

IMPORTANT

It is believed that the illustrations, information and specifications presented and referred to herein were correct at the time this publication was approved for printing. ■ Metric and Imperial quantities shown are equivalent within the implied accuracy. ■ International Harvester Australia Limited reserves the right, subject to any statutory enactment of Australia and/or a State or Territory thereof, and/or the regulations of any competent authority which may apply from time to time at their or its discretion, and without notice, to discontinue or change the specification or design of the products referred to herein and any options therefore at any time without incurring any liability whatsoever to any purchaser thereof. ■ Some of the items illustrated or referred to herein are optional at extra cost and may be required in combination with other options. ■ From time to time some of the items of standard, optional or available equipment referred to, described or illustrated in this brochure may not be available or reasonably available either immediately or at all either in Australia or elsewhere. Accordingly, the availability at any particular time of any of the products or items of standard optional or available equipment referred to, described or illustrated in this brochure will be dependent upon the local and/or overseas supply situation prevailing at that time. ■ We strongly recommend you consult your IH Dealer, Distributor or Company Branch to ensure you obtain the latest information on models, specifications, features, availability and prices.

Metric power conversion table

156 kW = 210 HP

172 kW = 230 HP

201 kW = 269 HP

261 kW = 350 HP

(Conversions are approximate only.)

 **International**
INTERNATIONAL HARVESTER AUSTRALIA LIMITED

CHECK IHCC
FIRST FOR
FINANCE

