



INTERNATIONAL TRANSTAR DCF-400

RATINGS

TYPE	ENGINE	CLUTCH	TRANS.	REAR AXLE	RA RATIO	Maximum GVW (lbs.)	Maximum GCW (lbs.)
1	NHC-250	14 in.	T-129	RA-351	4.44 to 1	46,000	80,000
2	NTC-335	15½ in.	T-128	RA-355	4.1 to 1	47,000	100,000
3	8V-71N	15½ in.	T-349	RA-355	4.77 to 1	47,000	100,000

STANDARD EQUIPMENT

AXLE, FRONT

FA-139 12,000 lb. capacity centre tread
Heat treated, forged steel I-beam

AXLE, REAR

Refer Variable Equipment

BRAKES, PARKING

Piggy back mounted on rear — rear axle
brake chambers
Spring actuated, released by air with
dash control
Total lining area: 475 sq. in.
Additional 462 cu. in. reservoir for
emergency release

BRAKES, SERVICE

Air with 12 cu. ft. water cooled
compressor
Two air reservoirs, total capacity 3,265
cu. in.
Size: front, 15 x 3½ in. wedge type; rear,
16½ x 7 in. S-cam type
Total lining area: 1,150 sq. in.
Low-pressure warning light and buzzer
Front-wheel limiting valve
Semi-trailer connections with break-
away, hand control valves and 14 ft.
hose kit

CAB

Welded steel construction
Safety glass windows and tinted wind-
shield
Bostrom "West Coaster" driver's seat;
tool box on right side
Foam rubber passenger seat
Two fresh-air intakes; dual sun visors;
ash tray
Heavy-duty rubber floor mat with insu-
lated backing

CAB (continued)

Vinyl plastic headliner and back panel
Air operated windshield wipers with
dual motors
Chrome grab handles
Dual rear view mirrors
Gauges: voltmeter, fuel level, water
temp., engine oil temp., trans. oil
temp., air pressure, oil pressure;
speedometer, odometer and tachom-
eter. RPM and MPH tachographs
(NTC-335, 8V-71N engines)
Bonnet and mudguards: one-piece
forward-tilting fibreglass
Electric windshield washers
Dual chrome air horns

CLUTCH

Refer variable equipment

COOLING SYSTEM

43-quart capacity
Three-piece bolted radiator with de-
aeration system; 1,003 sq. in. frontal
area
Air operated automatic radiator shutters

DRIVE LINE

HD dynamically balanced prop. shaft
Spicer 1700 Series needle bearing joints

ELECTRICAL

12 volt, 62 amp. alternator
Fully transistorized regulator
Four six volt, 150 amp. hr. (172 amp. hr.
with 8V-71 engine) batteries
Dome light; cigarette lighter
Rheostat controlled instrument panel
lights
High-beam and turn signal indicator
lights
Front directional signals, double face,
fender mounted with side reflectors
and lamps
Rear directional signals

ELECTRICAL (continued)

Two front clearance and three identifi-
cation lamps
Dual tail and stop lamps; back-up light;
parking light
Electric horn; traffic hazard switch

ENGINES

Refer variable equipment

FRAME

Heat-treated chrome molybdenum steel
channel
Bolted construction, drop front end
section, straight to rear
9-7/8 x 3-7/16 x ½ in.: section modulus
11.54 in. cubed
Formed steel front safety bumper
Full frame reinforcement over bogie

FUEL TANKS

Left 67 gal., right 83 gal.

STEERING

S-270 integral power steering with 21 in.
dia. wheel

SUSPENSION

Front: 11,300 lb. total capacity, HD steel
leaf springs semi-elliptical 4 x 54 in.
Threaded pins and bushings
Hydraulic double acting shock
absorbers
Rear: Hendrickson steel leaf spring sus-
pension RTE-340
3 x 46 in. springs
50 in. steel walking beams

TRANSMISSION

Refer variable equipment

WHEELS AND TYRES

Single front and dual rear
10.00 x 20 12 ply tyres
Cast spoke wheels with 7.50V rims

VARIABLE EQUIPMENT (For Application Refer Ratings Chart)

AXLE, REAR

RA-351 34,000 lb. capacity tandem drive
Hypoid gear single reduction, 16 in. ring
gear
One-piece forged steel housing
Full floating, induction hardened axle
shafts
Inter-axle differential power divider with
air operated lock and warning light
Ratio: 4.44 : 1

OR —

RA-355 38,000 lb. capacity tandem drive
Hypoid gear single reduction, 16 in. ring
gear
One-piece forged steel housing
Full-floating, induction hardened axle
shafts
Inter-axle differential power divider with
air operated lock and warning light
Oil temp. gauges
Ratios: 4.10 : 1; 4.77 : 1

CLUTCH

14-inch 2-plate with clutch brake
Total lining area: 423 sq. in.
OR —
15½ in. 2-plate, mechanical control
Total lining area: 481 sq. in.

TRANSMISSIONS

T-128 Fuller RT-915 15-speed direct, twin
countershaft Roadranger
Ratios: 12.00, 9.42, 8.05, 7.45, 6.30, 5.90,
4.99, 4.78, 3.95, 3.20, 2.51, 1.97, 1.56, 1.24,

VARIABLE EQUIPMENT (Continued)

TRANSMISSIONS (continued)

1.00 to 1
Reverse: 13.03, 8.73, 2.73 to 1
OR —
T-129 Fuller RT-910 10-speed direct twin countershaft Roadranger
Ratios: 8.05, 6.30, 4.99, 3.95, 3.20, 2.51, 1.97, 1.56, 1.24, 1.00 to 1
Reverse: 8.73, 2.73 to 1

OR —
T-349 Fuller RTO-913 thirteen speed overdrive, twin countershaft Roadranger
Ratios: 12.50, 8.35, 6.12, 4.56, 3.38, 2.47, 2.14, 1.81, 1.35, 1.17, 1.00, 0.87 to 1
Reverse: 13.07, 3.87 to 1

ENGINES

Cummins NHC-250 6 cylinder diesel
Gross B.H.P.: 250.0 @ 2,100 RPM

ENGINES (continued)

Gross torque: 686.0 lb. ft. @ 1,500 RPM
Displacement: 855.0 cu. in.
Compression ratio: 15.3 to 1
Full-flow oil filter with additional 23-pint bypass filter
Engine water filter and corrosion resistor
Heavy duty dry type air cleaner with depression indicator
R.A.C. taxable horsepower: 72.5

OR —

Cummins NTC-335 6 cylinder diesel
Gross B.H.P.: 335.0 @ 2,100 RPM
Gross torque: 930.0 lb. ft. @ 1,600 RPM
Displacement: 855.0 cu. in.
Compression ratio: 14.1 to 1
Full-flow oil filter
Engine water filter and corrosion

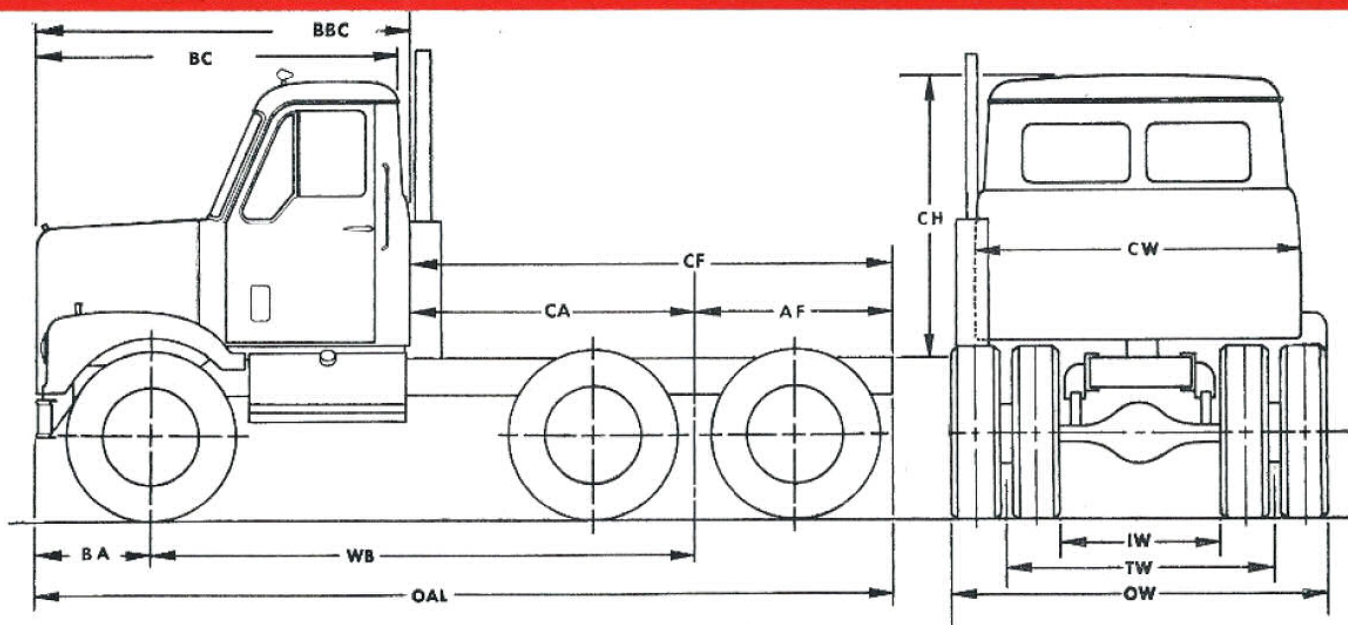
ENGINES (continued)

resistor
Vortex 16 in. centrifair dry type air cleaner with depression indicator
R.A.C. taxable horsepower: 72.6

OR —

Detroit Diesel 8V-71N eight cyl. V8
Gross B.H.P.: 290 @ 2,100 RPM
Max. torque: 805 lb. ft. @ 1,200 RPM
Displacement: 567.4 cu. in.
Compression ratio: 18.75 to 1
Full flow oil filter with additional 23-pint bypass filter
Engine water filter and corrosion resistor
Two-stage dry air cleaner with depression indicator
R.A.C. taxable horsepower: 57.8

DIMENSIONS AND WEIGHTS

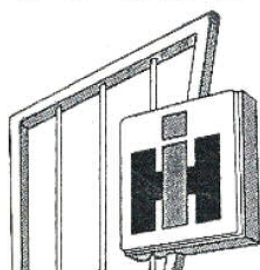


Dimensions with 10.00 x 20 tyres (ins.)

Frame height — rear axle	Overall width — front bumper:	95.5	Tread width (TW) — front	79.5
— empty: 39.5	Overall height — cab top:	107.0	rear	72.0
— loaded: 38.5	Outside width, tyres (OW):	95.5	Inside width (IW):	48.5
Ground clearance — front axle: 11.25				
Ground clearance — rear axle: 9.75				

Chassis dimensions and weights

Dimensions (inches)										Turning radius		Chassis weights (lbs.) *			
WB	BBC	BC	BA	CH	CW	CA	AF	CF	OAL	With Bumper Clearance	To Centreline of Tyre	Type	Front	Rear	Total
152	92	69	29.5	66	85	88.5	49	137.5	229.5	32 ft. 10 in.	31 ft. 4 in.	1	8,510	6,040	14,550



The sign of quality and service

*Weights are estimated and include standard tyres, oil, water and fuel (full tank). In order that product improvements may be introduced at any time, specifications are subject to change without notice. Illustrations may include optional equipment.