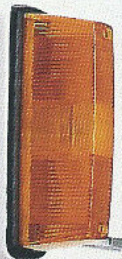


**Purpose-Built  
for Your Business**

**THE NEW  
ACCO G SERIES**



**ACCO  
2350 G**



# ACCO G SERIES



## From a tradition of reliability and performance.

International ACCO trucks are one of the great success stories of Australia's trucking industry. Over more than 20 years out on the job, these medium duty cab-overs have earned a reputation as tough, reliable workhorses - tried, proven, and trusted.

ACCO G is the newest evolution in the proud ACCO tradition. It offers all the power and resilience synonymous with the ACCO name; and a quality and style you'd expect from a more expensive truck. Like all International trucks, the new ACCO Gs are

purpose built from the ground up to give you maximum operational productivity over a long working life. They're specced by experts for an impressive range of applications, all at the lowest possible cost of ownership. Which means, whether your

ACCO G will be working for you as an agitator, a tipper, a distributor, a compactor, or anything else - it'll have the power and the reliability to get the job done. No problem. ACCO G Series trucks are available in 4x2, 6x2, 6x4, and 8x4 configurations, in either

short, regular, or long wheelbase, with low profile or standard chassis. All are equipped with a choice of powerhouse diesels, each with its own choice of output rating to perfectly answer the dictates of economy, terrain, payload, and application.

That's how International ACCO G Series truck work for your bottom line.



## Functional Cab Comfort

ACCO G cabs are purpose-built to suit specific applications. As comfortable as they are durable, they give your drivers everything they need to get on with the job.

They're also easy to get into: the doors open to 70° and there are four grab handles, two on each side of each door.

Regardless of cab configuration, the instruments and controls are driver friendly, well laid out, and easily visible. The dashboard features an all new instrument cluster across all cab versions, right and left hand drive and dual control.

The steering column is fully adjustable so drivers are kept comfortable and given fingertip control of the multi-function switches mounted on it.

A raised central console houses essential controls for dual-control cabs, as well as heating, air conditioning, the radio, an ashtray, electrical fuses, and an optional tachograph.

As well as the "shared" controls on the central console, International ACCO G dual control cabs have full duplication on both sides.

Regular cabs can be configured in either left or right hand drive. Left hand drive versions provide all the same instruments and features of the standard right hand drive.

The left hand option makes new ACCO G a truly "International" vehicle suitable for all world markets. Both left and right hand cabs are available with or without an optional Heavy Duty pack: detachable heavy-duty floor mats, "clean out" vents in the cab floor, a passenger footrest, and protective scull plates on the doors.

Mounted on coil springs with telescopic dampers at the rear and low-frequency isolating rubber bushes at the front, ACCO G cabs provide exceptional ride, comfort, and handling. Hydraulic cab latch-and-tilts are standard on all cab types so there's no need to lock and unlock the cab for tilting.



Centre Console and Fuse Panel



Instrument Cluster

## Power and Performance to Match

The International ACCO G range includes 1850 and 2350 models. Purpose built, their engines, transmissions, axles, brakes, and suspensions are individually matched to suit your specific demands. The result is an ACCO G that's durable, reliable, efficient, and supremely economical.

The 1850 models are powered by the ever-reliable Perkins Phaser 160T and 210T diesels. A six litre, six cylinder, turbocharged, direct injection engine, the 160T produces 119kW (160bhp) at a miserly 2,550rpm.

Where more power is needed, the 210T produces a gutsy 156kW (210bhp) at just 2,500rpm.



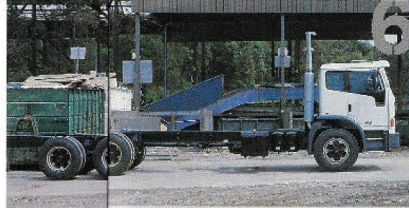
4x2

The 2350 models are equipped with Cummins 6CTA diesels. Eight point three litres and six cylinders, the 6CTA engines are turbocharged and aftercooled, and produce 179kW (240bhp) at 2,400rpm.

Alternatively, the 6CTA can be specced at 205kW (275bhp) at 2,000rpm. Where circumstances demand, speed governors can limit the 6CTAs to 2,200 rpm.

Whatever application you have in mind, ACCO G series trucks have the low revving high torque grunt to get on with the job.

Like all International trucks, the ACCO G series are equipped with tried and trusted



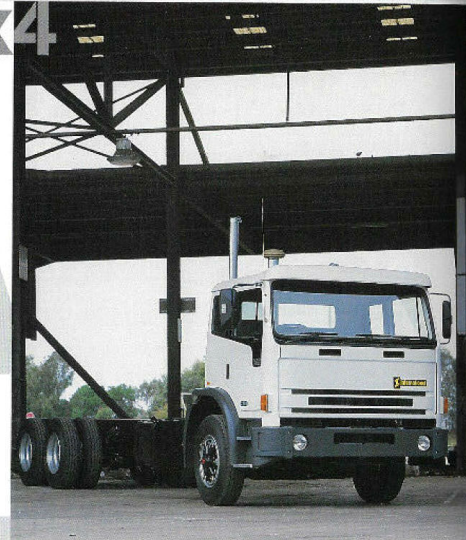
6x4

components — names you know you can rely on like Spicer, Hendrickson, Rockwell, Eaton, and Allison. More working life, less downtime, more grunt, less cost. Built in.

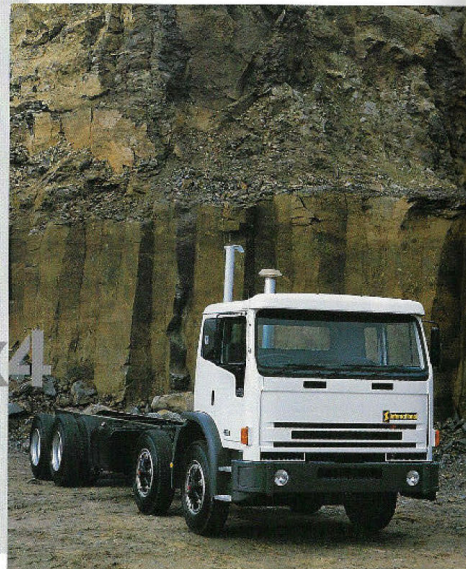
Low ratio automatic transmission, "road friendly" air suspension, and large capacity fuel tanks are all available as options for those applications that require them.

All ACCO G series trucks are fitted with dual S cam air brakes.

Each and every ACCO G truck is supported by Australia's largest truck dealer network. Spare parts are readily available, trained service personnel are always on-hand, and pricing is extremely competitive.



8x4





**I** International

ACCO  
2350G



**International  
Trucks**

**IVECO**

International Trucks Australia Limited

A.C.N. 004 065 061

An IVECO group company

Leadership through customer satisfaction

The illustrations, information and specifications ("material") in this brochure were correct at the time of publication but are subject to change without notice. The material is provided by way of general description only, and all measurements and specifications should be regarded as approximate. Availability of the vehicles and other items referred to in this brochure will depend on local and overseas supply conditions from time to time. Accordingly, before placing an order you should consult your nearest authorised International dealer to obtain accurate and up-to-date information on models, specifications, features, availability and prices.