

# NEW BEETLE CABRIOLET



AUS LIEBE ZUM AUTOMOBIL  
TO TEST DRIVE A NEW BEETLE CABRIOLET CALL: 1800 060 936

VOLKSWAGEN NEW BEETLE CABRIOLET



SO MUCH MORE  
THAN FROM A TO B



New dimensions of fun, freedom and excitement

The irresistible New Beetle Cabriolet turns the luxury, quality and safety of Volkswagen driving into an unforgettably nostalgic motoring experience for everyone.

AUS LIEBE ZUM AUTOMOBIL  
TO TEST DRIVE A NEW BEETLE CABRIOLET CALL: 1800 060 936

VOLKSWAGEN NEW BEETLE CABRIOLET



# THE 13-SECOND SENSATION



## Let the Outside In

With its innovatively simple release and operation mechanism, the New Beetle Cabriolet lets you start soaking up the sun in just 13 seconds. And, thanks to the power hydraulic operation, raising or lowering the roof takes no more effort than pushing a button.

The stylish, three-layered cloth soft top is fully insulated and tough enough to stand up to the worst of the elements. It comes with a scratch-resistant, heated glass rear window and features a high-quality door and roof sealing system for maximum sound insulation.





# DESIGN LET THE GOOD TIMES ROLL

To create a vehicle that really inspires enjoyment you need to begin by making fun and functionality integral parts of the design. To achieve this Volkswagen looked first to the unforgettable lines of the original free-spirited Beetle. Then, using the iconic form as inspiration, we let in the sun and cast a modern interpretation that blends spirit and attitude with perfect harmonies of style, ergonomics and pure cabriolet indulgence.

The end result is a truly feel good vehicle that comfortably seats four adults and boasts enough thoughtful details to make driving a unique pleasure for passengers and driver alike.



# SAFETY

CAREFREE AND CONFIDENT



Head turning looks aren't much good if you can't relax and enjoy them. Thankfully, the New Beetle Cabriolet offers the very latest in automotive safety technology including a rigid safety cell with front and rear crumple zones, driver and front passenger head airbags, ABS brakes with Electronic Brake pressure Distribution (EBD) and seat belts with pre-tensioners and force limiters.

Being a convertible, the New Beetle Cabriolet is also equipped with total roll-over protection. Its fully galvanised body (with 12 year-anti corrosion perforation warranty) is reinforced in vital areas like doors, pillars and cross members to provide extreme rigidity. And, should the car ever enter an unstable situation, sensors determine the risk of roll-over and if necessary release two supporting profiles (in 0.25 of a second) that together with the strengthened windscreen frame, completely protect all the occupants. Head airbags are also standard.





# QUALITY AND COMFORT

JUST WHAT YOU'D EXPECT FROM A VOLKSWAGEN

Although it's something Volkswagen drivers take for granted, the New Beetle Cabriolet's outstanding build and material quality did not come about by itself. Through every phase of its development and construction, quality has been a top priority: High tensile panels receive extra stability from reinforced bonding at specific points. Superior finishing reduces drag, and therefore fuel consumption, while also minimising noise. The high quality soft-top is tightly stretched and robustly connected to the frame to eliminate turbulence, and comes with a tonneau cover to keep it clean and looking great while you're enjoying the sun.

## WHERE EVERY GREAT DRIVE STARTS

Easing back into the plush leather, you flick off the air conditioning and pull up to the lights. At the push of a button, the soft-top folds back and the sun pours in. You turn up the CD, flash a cheeky smile at the people stuck in the sedan next to you, and accelerate away smiling... That's the sort of experience the New Beetle Cabriolet is all about, and it's something that we've built into every inch of the car. Luxurious standards like a 6 disc CD changer, illuminated time and temperature display, removable windblocker, leather upholstery, air conditioning and power windows make sure that whether it's down the road or down the coast, every trip is a journey into pleasure.



# EQUIPMENT

EVERY INCH STYLE, COMFORT AND SAFETY



## AIRBAGS

Giving you the confidence to relax and enjoy the ride, the New Beetle Cabriolet comes with dual front and side airbags, and head airbags (front).

## ABS + EBD

Taking an active role in safety, the New Beetle Cabriolet boasts the latest generation Anti-lock Braking System (ABS) with Electronic Brake-pressure Distribution (EBD). They provide safer, smoother braking and increase your control in the event of an emergency.

## POWER STEERING

To make every aspect of your drive as pleasurable as possible, electro-hydraulic power-assisted steering comes as standard.



## AIR CONDITIONING + FILTER

Boasting unique new comfort technologies, the New Beetle Cabriolet offers full, CFC free air conditioning with an environmental filter to keep dust and pollen out.

## EXTERIOR STYLING + ALLOY WHEELS

High-grade bodywork, unique colour schemes, meticulous detailing and lines of a true modern classic make the New Beetle Cabriolet stand out from any crowd. Route 66, 16 x 6 1/2" alloy wheels with 205/55 R16 tyres add a final, distinctive touch.

## ANTI-THEFT + CENTRAL LOCKING

To help make sure your investment stays safe, the New Beetle Cabriolet comes with remote central locking and a rolling code engine immobiliser.



## ENTERTAINMENT

The comprehensive in car entertainment package includes AM/FM stereo, CD player with 6 disc changer and an impressive 10 speaker (6 x front, 4 x rear) sound system.

## ROOF

Taut stretched, 3-layered cloth roof provides durable protection from the elements and eliminates noise disturbances. Effortless electro-hydraulic operation lets you raise or lower it in just 13-seconds at the push of a button.

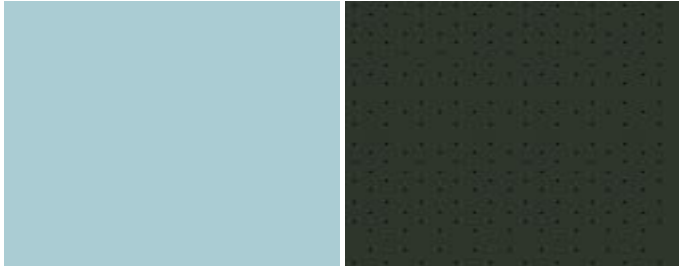
## HEADLIGHTS + FOG LIGHTS

The distinctive, round Halogen headlights with clear polycarbonate lenses feature a combined head/fog light switch, internal angle adjustment and headlight-on warning buzzer. Front and rear fog lamps are also provided.



# COLOUR

## & UPHOLSTERY COMBINATIONS



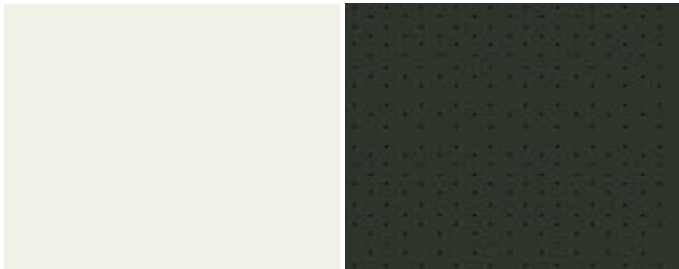
Aquarius Blue

Black Leather



Mellow Yellow

Black Leather



Campanella White

Black Leather



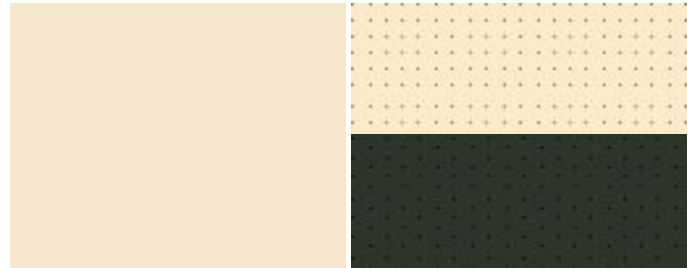
Royal Navy (PE)

Beige Leather / Black Leather



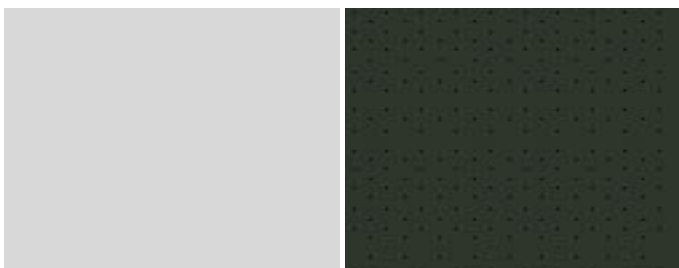
Sundown Orange

Black Leather



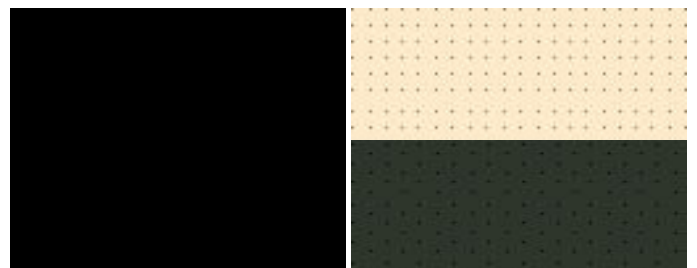
Harvest Moon

Beige Leather / Black Leather



Reflex Silver (M)

Black Leather



Black Magic

Beige Leather / Black Leather

Please note metallic and pearl effect paint finishes are optional at extra cost. All models come standard with a black roof.

NB: colours are a representation only and may vary from screen to screen.

PE = Pearl Effect Paint

M = Metallic Paint





# Standard Equipment

## Safety and Security

Airbags		
	Driver and front passenger airbags	S
	Driver and front passenger side and head airbag system	S
Alarm / Anti-theft		
	Engine immobiliser (rolling code)	S
Body		
	Fully galvanised with full 12 year anti-corrosion perforation warranty	S
	Door side impact protection	S
	Rigid safety cell with front and rear crumple zones	S
	Roll over protection system	S
Brakes		
	Anti-lock Braking System (ABS)	S
	Electronic Brake-pressure Distribution (EBD)	S
Fog lights		
	Front mounted in lower bumper	S
	Rear fog lamp	S
Head restraints		
	Active front head restraints, height adjustable	S
	Rear x 2	S
Locking		
	Remote central locking with deadlock mechanism	S
	2 stage unlocking (programmable)	S
	Automatic locking after takeoff (programmable)	S
	One touch lock/unlock for driver	S
Seatbelts		
	Front with pre-tensioners and belt force limiters	S
	3 point seat belts for all passengers	S

## Exterior Equipment / Styling

Chrome strip on body waistline	S	
Colour coded bumper strips	S	
Colour coded door handles and outer rear view mirrors	S	
Heat insulating tinted glass	S	
Rear window		
	Heated glass	S
Roof		
	Electro-hydraulic, 3 layer cloth	S
Tonneau cover	S	
Wheels		
	Alloy wheels (Route 66) 16 x 6 1/2" with 205/55 R16 tyres	S
	Full size steel spare wheel	S

## Comfort and Convenience

Air conditioning, CFC free	S	
Armrest		
	Front centre leather armrest, lockable with 6 disc CD changer	S
Carpet mats		
	Front and rear	S
Central locking		
	Remote control	S
Cruise control	S	
Cup holders		
	Front x 2	S
	Rear x 1	S
Driver and passenger sun visors	S	
Dust and pollen filter	S	

**Key**                                  S = Standard                                  O = Optional                                  - = Not available



## Standard Equipment

Entry/warning light in front doors	S
Fuel filler flap	
Electrically operated via switch on driver's door	S
Grab handle on glove box	S
Headlights	
Halogen headlights with clear lightweight polycarbonate lenses	S
Headlight-on warning buzzer	S
Combined headlight and fog light switch, internal angle adjustment	S
Instrumentation	
Speedometer and tachometer, electronic odometer and tripmeter, service interval display, fuel gauge, low fuel warning light, brake pad wear indicator, blue adjustable illumination.	S
Digital clock and outside temperature display mounted on windscreen frame	S
Interior lighting	
Front mounted in rear-view mirror housing with time delay	S
In Car Entertainment	
AM/FM stereo, theft deterrent warning light and coding	S
6 disc CD changer, mounted in centre console	S
10 speakers, Front x 6/Rear x 4	S
Luggage compartment	
Electric opener operated via switch on driver's door and remote key	S
Luggage compartment light	S
Mirrors	
Electrically heated and adjustable, body coloured with integrated indicator lights	S
Power steering	S
Seating	
'Easy entry' front seats with height adjustment	S
Individually heated front seats	S
Rear seat load through provision (lockable)	S
Steering wheel	
Height and reach adjustable	S
Leather steering wheel, handbrake grip and gear knob/shift	S
Storage	
Glove box with illumination, lockable	S
Front seat backrest storage pockets	S
Front door and rear side door storage pockets	S
Upholstery - 'Perforated' leather	S
Vase with flower	S
Wind deflector	S
Vanity mirrors	
Illuminated on driver's and passenger's side with cover and pocket	S
Windows	
Power front and rear with roll-back function, driver with one-touch up-down	S
Driver with button for simultaneous lowering and closing of all windows	S
Key operated convenience close and open feature	S
Wipers	
2 speed with wash/wipe and intermittent wipe with 4 position delay	S
12V socket	
Mounted in luggage compartment	S

## Optional Equipment

Automatic transmission (6 speed) with Tiptronic	O
Metallic / Pearl Effect paint	O

**Key**                                          S = Standard                                          O = Optional                                          - = Not available



# Technical Specifications

## Engine

## 2.0 Litre

Type	4 cyl inline petrol	
Installation	Front transverse	
Cubic capacity, litres / cc	2.0/1984	
Bore / stroke, mm	82.5/92.8	
Max power, KW @ rpm	85 @ 5400	
Max torque, Nm @ rpm	172 @ 3200	
Compression ratio	10.3:1	
Fuel system	Multi-point injection system	
Ignition system	Electronic	
Exhaust emission control	Catalytic converter, oxygen sensors	
Fuel type, minimum	Premium unleaded 95 RON	

## Transmission

## Front wheel drive

Gearbox	5 speed manual	6 speed automatic
Ratios:		
1st gear	3.78	4.04
2nd gear	2.12	2.37
3rd gear	1.36	1.56
4th gear	1.03	1.16
5th gear	0.84	0.85
6th gear	-	0.67
Reverse	3.60	3.19
Final drive	4.24	4.32

## Performance

0 -100 km/h	11.7	12.9
Top speed, km/h	184	181

## Fuel consumption (ADR 81/01)

Combined, L/100km <sup>^</sup>	8.8	9.3
CO2 emission g/km <sup>^</sup>	211	223
Fuel tank capacity, litres	55	55

<sup>^</sup> Fuel consumption figures according to Australian Design Rule (ADR) 81 / 01 and European standard 1999 / 100 / EC  
The driving style, road and traffic conditions, environmental influences and vehicle condition can in practice lead to consumption figures which may differ from those calculated with these standards.

## Running gear

Suspension - Front axle	McPherson struts and coil springs. Anti-roll bar
Suspension - Rear axle	Torsion beam axle, trailing arms, coil springs. Anti-roll bar
Steering	Power assisted rack and pinion steering
Brake systems	Anti-lock Braking System (ABS) with Electronic Brake-pressure Distribution (EBD)
Front Brakes	Ventilated discs 280mm
Rear Brakes	Solid discs 232mm
Turning circle, m	10.9

## Dimensions

### Weights

	5 Speed Manual	6 Speed Automatic
Unladen vehicle weight, kg	1324	1352
Towing capacity - Braked, kg		1000
Towing capacity - Unbraked, kg		600
Towbar load limit, kg		75

### Exterior dimensions

Overall length, mm	4081
Width, mm	1724
Height, mm	1502
Ground clearance, mm	137
Wheelbase, mm	2509
Front Track, mm	1506
Rear Track, mm	1487

### Interior dimensions

Boot volume, L	201
Luggage compartment floor length, mm	676
Boot width at widest point, mm	1017
Width between wheel arches, mm	996
Luggage load height, mm	465





Volkswagen is distributed in Australia by Volkswagen Group Australia Pty Ltd, Lakes Business Park, 6 Lord Street, Botany 2019 NSW, Australia. ABN 140 931 178 76. Specifications are as planned at August 2003, and are subject to change without notice or obligation. Cars shown are for illustrative purposes only and may not accurately depict Australian specification cars. All Volkswagen approved parts are warranted for 1 year/unlimited kilometres. All warranties implied by legislation or otherwise are excluded to the maximum extent permitted by law. The liability of Volkswagen shall, subject to the law, be limited at Volkswagen's discretion:

1. In the case of the goods, the repair or the cost of repair, or the replacement or the cost of replacement; and
2. In the case of services, the re-supply of the services or the cost of re-supply of the services.

All information in this brochure is correct at the time of publication, however variations may occur from time to time and Volkswagen, in so far as it is permitted by law to do so, shall not be liable in any way as a result of any reliance by any person on anything contained in this brochure. The colours shown in the brochure are indicative only and may vary from actual items owing to users screen resolution and printing variations. Authorised Volkswagen dealers will provide up-to-date information on model application, design features, prices and availability on request.

