



**XL7**

 **SUZUKI** | *have fun*<sup>\*</sup>

## Comfort and versatility

Short trips, long trips, big loads or long loads, Suzuki engineers have created an interior that's as clever as it is comfortable. First of all, it has a standard adjustable second row of seats. And it's the only vehicle in its class to offer a third row of seats. That works out to plenty of seating and room left over for luggage. The second and third-row seats also have a split-folding design so you can carry long items or, for the ultimate in versatility, you can carry a combination of cargo and people.

Completing the comfort zone are a range of features that keep the whole cabin cushy. In-dash 6-stacker CD stereo with steering wheel mounted controls, wood trim finish, velour seats, climate control, air conditioning with front and rear outlets, power steering, electric windows, remote keyless entry, an engine immobiliser and much more.

Your passengers will also appreciate the wider doors that make it easier to access the second and third-row seats. Storage areas include a large sliding tray under the front passenger's seat. The speakers are strategically located to provide optimum sound for all occupants. And if your passengers don't want to listen to your music, three 12-volt accessory sockets will let them energise their own portable CD player, video game and even a laptop computer.









## XL-7 Limited and luxurious

If there's one 7-seat 4WD that could possibly tempt you more than the XL-7, it's the XL-7 Limited. Quite simply, it's all class. Take the seats (they're the comfortable looking things on the left). Each and every one is wrapped in pure leather. It's the ultimate in style and luxury and our designers went out of their way to spread it around. That's why the steering wheel is also leather made. With your inside comfort well and truly taken care of, we then turned our attention to the outside. To the roof, we added a sunroof (that opens with a simple push of a button) and to the rear, a rear end spoiler. And in case you're wondering, the XL-7 Limited does come with all the features of the standard XL-7.



Photo shown does not include second row head restraint or 3 point seat belt.

## The Suzuki XL-7

There's a myth in the 4WD market, that says to get a genuine 4WD seven seater, you have to pay over \$40,000. Introducing a 4WD that puts this myth to rest; The Suzuki XL-7.

As you might well have guessed, it's priced under \$40,000. Yet, price is only the beginning of the XL-7 story.

A story built around a simple Suzuki commitment. To make XL-7 the best value seven seater going round.

The end result of this commitment, a 4WD that quite simply, has the lot. Features, handling, power, toughness, comfort and space. New Suzuki XL-7. The story unfolds...



The best value seven seat 4WD  
going up, down, around...



## Performance and handling

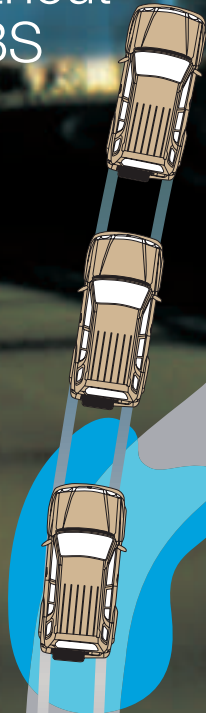
With 135kW at 6,000rpm on call, the 2.7-litre, DOHC V6 engine is just itching for some serious off-road challenges. Scorch up steep terrain, cruise effortlessly on the highway or tow up to 1,850kg, the XL-7 is totally at your command. A perfect blend of power and technology, the engine also features a zero-maintenance timing chain and direct ignition system for reliability and increased efficiency. Perfectly matched to the engine is the precise shift 5 speed manual transmission or optional 5 speed automatic transmission.

Getting that power to the pavement, or the dirt, is the job of the XL-7's rugged but supple suspension and available Drive Select 4X4 system. At the front is an independent coil spring design with a strut-tower bar to reduce body flex and increase steering precision. At the rear, a solid axle is located by five sturdy links to control suspension movement and ensure predictable tracking and confident cornering. Topping off the suspension are 16-inch tyres that provide a large contact patch for excellent traction and road-holding on a variety of road surfaces.



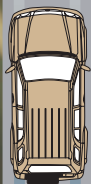


without  
ABS

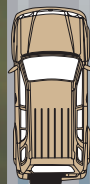


Wet surface

with ABS



Brakes applied



*The four-wheel ABS steering control during heavy braking on slick roads. By preventing lockup, ABS helps you steer clear of an obstacle or hazard.*

*Get the most traction in off-road conditions by utilising the available Drive Select 4x4 system.*

## Safety and engineering

Suzuki engineers have always made safety a top priority. It's the substance behind the style, and it's why the XL-7 is one of our safest 4WD's yet. To begin with, the sturdy ladder frame is fully boxed and designed with built-in crumple zones at the front and rear. In a frontal or rear collision, the crumple zones act like buffers. They deform in a progressive manner to absorb and spread impact energy to help reduce the overall crash forces acting upon the occupants. To help protect occupants in a side impact, the body features a steel-reinforced passenger compartment utilising high-tensile-strength steel. Additionally, the doors are equipped with side-impact door beams.

On the inside, you're protected by dual airbags while rear-door child safety locks enhance child safety.

Of course the best way to stay safe is to avoid a collision. Here the XL-7 considers all possibilities. Related collision-avoidance features include a power-assisted rack-and-pinion steering system, and standard four-wheel ABS.



# Specifications and features

## ■ SPECIFICATIONS

		XL-7	
		5MT	5AT
<b>DIMENSIONS</b>			
Overall length	mm	4,700	
Overall width	mm	1,780	
Overall height	mm	1,740	
Wheelbase	mm	2,800	
Track	Front	1,500	
	Rear	1,500	
Ground clearance	mm	210	
Minimum turning radius	m	5.9	
<b>WEIGHT</b>			
Curb weight (min.)	kg	1,625	
Gross vehicle weight	kg	2,300	
<b>ENGINE</b>			
Type	H27A		
Cylinders	6		
Number of valves	24		
Piston displacement	cc	2,736	
Bore x stroke	mm	88 X 75	
Compression ratio	9.5:1		
Maximum output	kW/rpm	135/6,000	
Maximum torque	Nm/rpm	250/3,300	
Fuel distribution	Multi-point injection		
Fuel consumption	Urban	litre/100km	15.4
	Extra urban	litre/100km	9.3
	Combined urban	litre/100km	11.6
<b>TRANSMISSION</b>			
Gear ratio	1st	3.830	3.520
	2nd	2.062	2.043
	3rd	1.436	1.401
	4th	1.000	1.000
Gear ratio	5th	0.788	0.717
	Reverse	4.220	3.224
		4.300	4.300
Transfer gear ratio	High/Low	1.000/1.653	
<b>CHASSIS</b>			
Steering	Rack and pinion		
Brakes	Front/Rear	Ventilated discs/drum	
Suspension	Front/Rear	Strut/5-link, coil, rigid axle	
Tyres	235/60R16		
<b>CAPACITY</b>			
Seating	Persons	7	
Fuel tank	Litres	66	
<b>TOWING</b>			
Manufacturer recommendation	1850kg (braked)		

### LIMITED EDITION

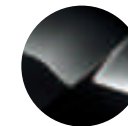
Tilt and slide electric sunroof (deletes overhead console)	●
Moulded and leather accented front and rear door trims	●
Roof end spoiler	●
Front and rear seat material	leather
Steering wheel	leather

## ■ EQUIPMENT

XL-7	
<b>COMFORT</b>	
Power steering	●
Electric windows	●
Central door locking	●
Remote keyless entry	●
Electrically adjustable outside mirrors	●
Climate control air conditioning (front and rear outlets)	●
6 stack in-dash CD stereo	●
Stereo controls on steering wheel	●
<b>INSTRUMENT PANEL</b>	
Tachometer	●
Digital clock and outside temperature display	●
Lights off reminder	●
Fuel warning indicator	●
Steering wheel	Urethane, 3 spoke
Steering lock	●
Tilt steering	●
<b>INTERIOR</b>	
Room light (fade out function)	3 position
Rear cabin light	3 position
Front map lights	●
Sunshade print on front windshield	●
Sun visors (both sides)	●
Vanity mirrors (both sides)	●
Ticket holders (both sides)	●
Day/night rear view mirror	●
Front/2nd/3rd seat material	Full fabric
Front seat height adjuster (driver's side)	●
Reclining front/2nd/3rd seats	●
Sliding front and 2nd seats	●
Split folding 2nd/3rd seatbacks	●
Rear 2nd/3rd head restraints	5
Sliding covered armrest storage compartment	●
Front and rear door armrests (both sides)	●
Centre armrest 2nd row	●
Front and rear door trims	Moulded, cloth accented
Front and rear door pockets (both sides)	●
Front seatback pockets (both sides)	●
Utility pocket in quarter trim	●
Luggage storage compartment	●
Front seat under tray (passenger side)	●
Overhead console	●
Walk-in mechanism (both sides, 2nd row)	●
Rear ashtray	●
Accessory sockets	3
Cup holders	7
Assist grips	3
Coat hooks	2
Footrest	●
Remote fuel lid opener	●

## EXTERIOR

Alloy wheels	●
Halogen headlights	●
Front window wipers (2 speeds + variable intermittent)	●
Rear window wiper and washer (1 speed + intermittent)	●
Rear window demister	●
Tinted glass windows	Green
Body coloured bumpers and outside mirrors	●
Chrome plated door handles	●
Body side mouldings	●
Roof rails	●
Spare tyre cover (disc type)	●
<b>SAFETY &amp; SECURITY</b>	
Drive select 4x4 system	●
Dual airbags	●
ABS with EBD (electronic brake force distribution)	●
Engine immobiliser	●
Three-point ELR seat belts for all seats	●
Pre-tensioners for front seat belts	●
High mounted stop lamp	●
Height adjustable front and 2nd seat belt anchorage	●
Childseat tether anchorage	●
Child-proof rear door locks	●
Side impact beams	●
Visible vin	●



Bluish Black Pearl



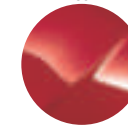
Cool Beige Metallic



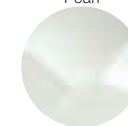
Cat's Eye Blue Metallic



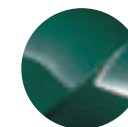
Silky Silver Metallic



Cassis Red Pearl



Bright White



Grove Green Metallic

