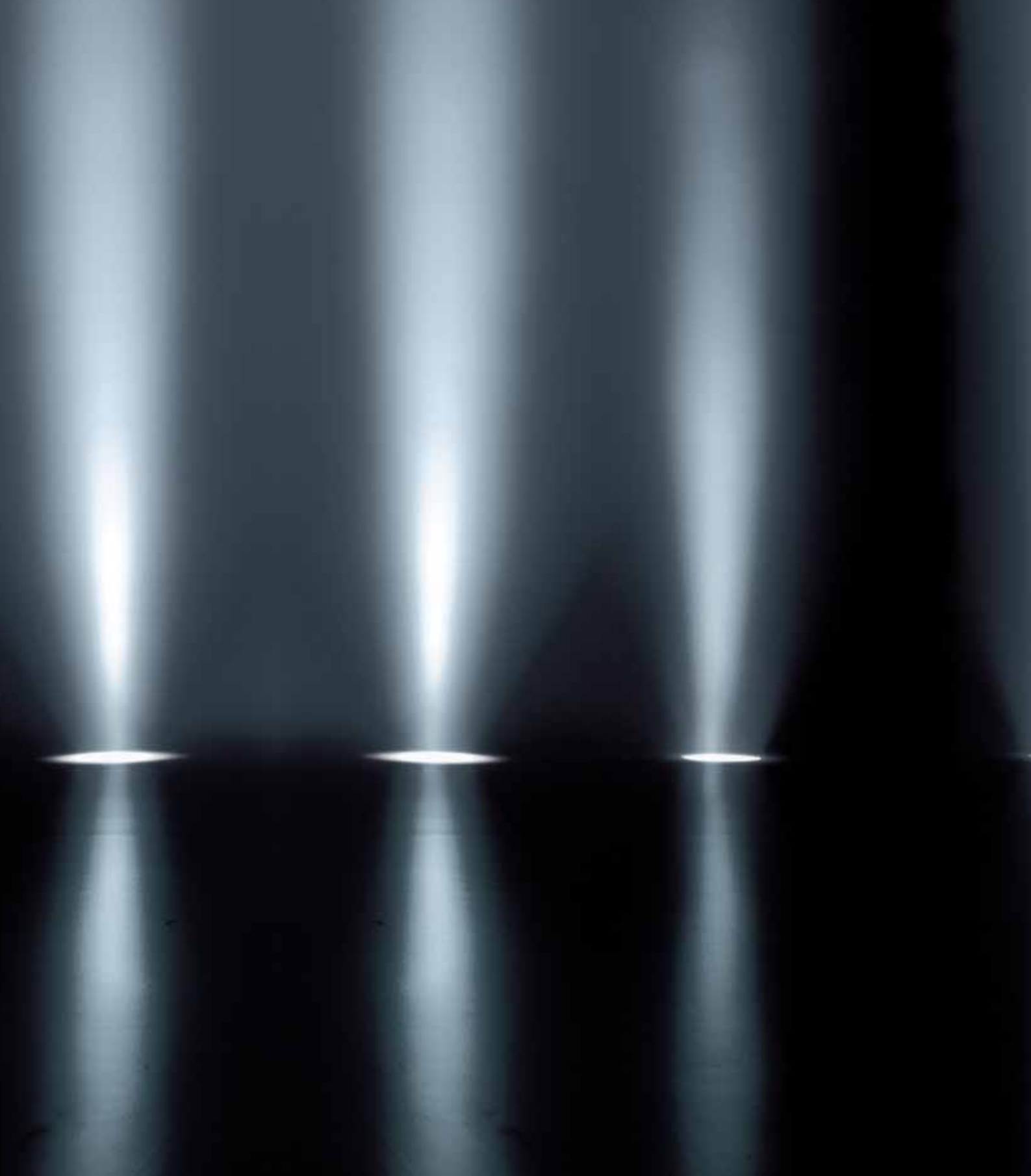




Aus Liebe zum Automobil

## Volkswagen Golf GTI







## **Golf GTI. The legend is reborn.**

The fifth generation Golf GTI continues a tradition that began in 1976 when the GTI legend was born. The latest Golf GTI focuses on the same pure qualities and principles as the original – class leading performance, dynamic handling and sheer driving enjoyment.

Now taking a huge evolutionary step forward, the Golf GTI offers a host of refinements and technological advances, redefining the GTI to deliver new levels of energy, excitement and exhilaration.



Overseas model shown.





## The badge says it all.

As soon as you set your eyes on the Golf GTI, you'll feel a stirring within. Could it be the wide track, lowered sports suspension and 17" 'Denver' alloy wheels that have set your pulse racing? Maybe the rear roof spoiler and GTI

styling with its deep front spoiler, or the unique black grille with honeycombe front air intakes? Step back, take a deep breath, your journey is about to begin.



The 147kW Golf GTI with optional DSG and leather upholstery.



## The excitement builds as you step inside.

Interior specification is everything if you're driving a GTI, and here the new generation Golf GTI will not disappoint. Settle into the deep front sports seats with height and lumbar adjustment, hold onto the race-inspired leather sports steering wheel and feel the excitement begin to build. The specially designed aluminium gear knob and racing pedals make it unmistakably clear you're sitting

in a GTI, while the quality of the standard 'Interlagos' cloth, or optional leather upholstery, and brushed aluminium instrument surrounds reinforce the feeling that this is no ordinary car.







## The ultimate driving experience.

If the original GTI was groundbreaking, this Golf GTI is literally mind-blowing. Committed to a tradition of pure driving enjoyment, this new generation GTI carries the legacy of sports performance to unprecedented levels.

The Golf GTI is powered by a new 16-valve direct injection 2.0 litre FSI turbocharged engine which develops a phenomenal 147kW of power at just 5,100rpm and a hefty 280Nm of torque available from 1,800rpm all the way to 5,000rpm. The FSI technology utilised in the GTI engine provides a double-edged advantage – performance and economy. FSI has taken the petrol engine to a new level of efficiency. It works by injecting fuel directly into the combustion chamber under high pressure. The benefit of this method is that it only burns the exact amount of fuel required.

The engine is linked to either a slick six speed manual gearbox or the Direct Shift Gearbox (DSG) which offers a genuine alternative to a manual. The DSG gearbox is able to change gear faster than a manual and more smoothly than a standard automatic, but with performance and fuel economy figures that are actually superior to the manual.

This means that the 147kW GTI DSG will reach 100km/h from standstill in just 6.9 seconds and go on to a top speed of 233km/h, where the law permits, whilst returning exceptional fuel consumption figures.

- 01** The revolutionary DSG gearbox provides the best of both worlds, super smooth and extremely fast gear changes with performance and economy figures that are superior to the manual.
- 02** Twin exhaust tailpipes clearly show the potential of the Golf GTI.
- 03** The standard dual zone electronic climate control air conditioning allows the driver and front passenger to maintain individual temperature settings. The heated front seats form part of the the leather upholstery option.





Overseas model shown.



## Craving for corners.

The Golf GTI will have you searching for corners. Fast sweepers, switch backs and chicanes alike. In the spirit of the original, this new generation Golf GTI delivers handling that will reward and inspire the driver. Lowered sports suspension combines with front/rear anti roll bars and multi-link independent rear suspension to create incredible cornering performance.

The electro-mechanical power steering is calibrated to provide perfect feedback to the driver through the race-inspired steering wheel. Powerful braking is delivered by 312mm ventilated front brakes and 286mm rear brakes. Brake hard, turn in and exit fast. The Golf GTI offers new levels of handling and driver enjoyment.





## Outstanding safety.

With outstanding performance comes a requirement for outstanding safety and here the new Golf GTI excels. To start with, the body is laser-welded to provide immense strength, resulting in a structure which can absorb extremely high impact energy and protect the driver and passengers within an inner safety cell. There are a total of

**six airbags:** two front airbags, two front seat side airbags and two full length curtain airbags. In addition, there are three-point seat belts for all seats and front seat active head restraints, which help minimise whiplash injuries in the event of an impact from the rear.



The Golf GTI uses an advanced range of active safety features to help you avoid an accident in the first place. To begin with, **Traction Control** (ASR) can help to avoid wheel spin in slippery conditions while the **Electronic Stabilisation Program** (ESP) detects critical situations at an early stage. The ESP takes action by braking individual wheels and reducing the engine's power output, helping to keep the vehicle under control. ESP is supported by

an **Anti-lock Braking System** (ABS) and **Brake Assist** which recognises an emergency braking situation and increases the braking effort automatically.

The result of these new generation safety features is one of the safest cars on the road. No wonder the Golf has been awarded the maximum **five star Euro NCAP** safety rating for frontal and side impact.



- 01 The leather rimmed three-spoke steering wheel shows the sporting intent, the GTI badging confirms it.
- 02 The standard radio/6 disc CD changer comes with ten speakers – six front and four rear – for perfect acoustics.
- 03 The front grille mounted chrome GTI badge – proof that you’re driving an original.
- 04 The deep front spoiler, black honeycombe grille and integrated fog lights enhance the sporty exterior.
- 05 Standard 17" ‘Denver’ alloy wheels with low profile tyres give the Golf GTI a purposeful stance.





## You're driving an original.

There will always be the original, and there will always be pretenders. If you're driving the Golf GTI, let there be no doubt in your mind – this is the genuine article, the new generation GTI, based on the original philosophy and produced to the same legendary build quality. What greater thrill could you ask for than seeing the gleaming

chrome GTI badge proudly mounted on the front grille? Guaranteed to send a shiver down your spine, the message is clear – the original GTI is back.





## **Optional equipment.**

Life is all about choices and making your mark on the world. So why not choose from a host of optional equipment and give a touch of individuality to your new Golf GTI? For example, choose from sumptuous leather upholstery with heated front seats, Bi-Xenon

headlights, satellite navigation with large format colour screen, electric glass sunroof or the 6 speed Direct Shift Gearbox (DSG). It's time to make some decisions.



- 01** The optional leather upholstery includes ergonomically designed leather sports seats with height and electric lumbar adjustment. Not only do they provide firm lateral support, they are stylish, extremely durable and easy to clean.
- 02** Included with the optional leather upholstery are individually heated front sports seats with five preset temperature settings to provide year-round comfort.
- 03** The radio/navigation system not only delivers perfect sound quality, it also guides you to your destination. A large multifunction colour display shows a map of your route along with important information on time and distances. In addition, audible directions can be broadcast allowing you to concentrate on the road ahead.







01



02



03

- 01** A headlight cleaning system and automatic self levelling function are included with the optional Bi-Xenon headlights.
- 02** Optional Bi-Xenon headlights provide the benefit of clearer, brighter illumination.
- 03** The Genuine Accessory 18" x 8" 'Karthoum' alloy wheel gives the Golf GTI a more aggressive appearance. Note – wing extensions must be fitted with 18" wheels.







## **Golf GTI. A genuine classic.**

It goes without saying that the Golf GTI is built to the highest quality standards. You can feel it as you touch the sumptuous materials of the interior. You can hear it in the satisfying clunk as you shut the doors. And you can see it a year after you've bought it, when it still looks as good as

the day you first drove it. That's the test of a genuine sports classic. Naturally, there's only one way to experience it, and that's in the driving seat on the open road. Be prepared, though. Once you've driven the original, nothing else will compare.

## Safety and Security

### Airbags

- Driver and front passenger airbags
- Driver and front passenger side airbags
- Curtain airbags, front and rear

### Anti-theft

- Electronic engine immobiliser
- Alarm system with interior monitoring and tilt sensor

### Body

- Fully galvanised 5 door body with 12 year anti-corrosion perforation warranty
- Door side impact protection
- Rigid safety cell with front and rear crumple zones

### Brakes

- Anti-lock Braking System (ABS)
- Electronic Brake-pressure Distribution (EBD)
- Brake Assist
- Red brake callipers

### Child restraint

- 3 child seat anchor points mounted on back of rear seat

### Fog lights

- Front fog lights, mounted in lower bumper
- Rear fog lamp

### Head restraints

- Active front head restraints, height adjustable
- Rear head restraints height adjustable (3)

### Locking

- Remote central locking with deadlock mechanism
- 2 stage unlocking (programmable)
- Automatic locking after takeoff (programmable)
- Automatic unlocking after removing key from ignition (programmable)
- One touch lock/unlock for driver
- Child safety locks on rear doors
- Luggage cover, removable

### Seat belts

- Front height adjustable with pre-tensioners and belt force limiters
- 3 point seat belts for all passengers

### Traction Control

- Anti-Slip Regulation (ASR)
- Electronic Stabilisation Program (ESP)

## Exterior Equipment/Styling

### Body Enhancements

- GTI badging on radiator grille and tailgate
- Front lower air intake and radiator grille with black honeycomb inserts, high gloss finish in black with red outline
- Rear roof spoiler
- Side skirts
- Unique rear bumper with dual chrome exhaust tail pipes

### Colour coding

- Bumper bars
- Bumper and side moulding strips
- Door handles
- Outer rear view mirrors

### Tinted Glass

- Heat insulating tinted glass

### Wheels

- Alloy wheels (Denver) 17 x 7" with 225/45 R17 tyres and anti-theft wheel bolts
- Low tyre pressure indicator
- Weight and space saving spare wheel

## Comfort and Convenience

### Armrest

- Front centre armrest with storage box, 2 rear air outlets and 2 rear cup holders
- Rear seat centre armrest with load through provision

### Air conditioning

- Dual zone climate control, CFC free
- Dust and pollen filter

### Automatic dimming rear-view mirror

Carpet mats Front and rear
Cruise control
Cup holders Front x 2, with bottle opener Rear x 2 One litre bottle holders in front door pockets
Entry/warning reflectors in front and rear doors
Fuel filler flap Electrically operated via switch on driver's door
Grab handles Soft fold away grab handles, front and rear
Headlights Halogen twin headlights with clear polycarbonate lens and tinted housing Headlight-on warning buzzer Internal headlight range adjustment Low light sensor Coming/leaving home function Combined headlight and fog light switch
In Car Entertainment AM/FM stereo with security coding Audio functions mounted on steering wheel 6 disc CD changer, mounted in-dash 10 speakers, front (6) and rear (4)
Instrumentation Unique speedometer & tachometer, electronic odometer and tripmeter, service interval display, digital clock, fuel & coolant gauges, low fuel warning light, brake pad wear indicator, blue adjustable illumination
Interior Enhancements Aluminium/leather gear knob, leather gaiter and handbrake grip Aluminium pedals Aluminium door sill scuff plates Brushed aluminium inserts in dashboard, centre console and doors Chrome trim on instrument dials
Interior lighting With time delay Foot well illumination, driver and front passenger Front reading lights (2) with chrome trim Rear passenger reading lights (2)
Luggage compartment Chrome plated load restraining hooks Luggage compartment light Luggage net under luggage cover Shopping bag hooks Storage box in side lining 12 volt socket
Mirrors Electrically heated and adjustable LED turn indicators integrated in exterior mirrors
Power steering Electro-mechanical, vehicle speed and steering input sensitive
Seating Front GTI sports seats with additional side bolstering and embossed GTI insignia Height adjustment for front seats Lumbar adjustment for front seats Split folding rear seat backrest (60/40) with load through provision and centre armrest
Steering wheel 3 spoke leather rimmed flat bottomed steering wheel with aluminium inserts Gear shift paddles (DSG) Audio functions Height and reach adjustable steering wheel
Storage Chillable glove box, illuminated and lockable Chillable centre console storage compartment (not available with Satellite Navigation) Coin tray and 12 volt socket in console Front seat backrest storage pockets Front door pockets with one litre bottle holders Sunglass compartment in roof console



<b>Trip Computer</b>	Multi-function trip computer – trip time, trip length, average speed, average and current fuel consumption, distance till empty & outside temperature
<b>Upholstery</b>	'Interlagos' GTI sports cloth seats
<b>Vanity mirrors</b>	With covers and illuminated on driver's and passenger's side
<b>Wipers</b>	2 speed aero wipers with wash/wipe and rain sensor Rear window with wash/wipe and intermittent wipe
<b>Windows</b>	Power front/rear, with roll-back function, driver with one-touch up-down Remote operated convenience close and open feature
<b>12V socket</b>	Centre console Luggage compartment

### Optional Equipment

Automatic Transmission, 6 speed Direct Shift Gearbox (DSG)
Bi-Xenon headlights with automatic self levelling and headlight cleaning system
Electric glass sunroof, slide and tilt adjustable with sunblind
Leather upholstery with heated front GTI sports seats and electric lumbar adjustment
Metallic/Pearl Effect paint
Satellite navigation with large format colour map screen and audible driving recommendations, with 6 disc CD changer mounted in centre console

### Technical Specifications

<b>Engine</b>	<b>2.0 litre FSI Turbo</b>	
Type	4 cylinder inline petrol	
Installation	Front transverse	
Cubic capacity, litres/cc	2.0/1984	
Bore/stroke, mm	82.5/92.8	
Valves	4 valves per cylinder	
Camshafts	Dual overhead camshafts	
Max power, kW @ rpm	147 @ 5100	
Max torque, Nm @ rpm	280 @ 1800–5000	
Compression ratio	10.5:1	
Fuel system	FSI direct petrol injection system	
Induction	Exhaust gas turbocharger	
Ignition system	Electronic	
Exhaust emission control	3-way catalytic converter with lambda probe	
Fuel type (Recommended)	Premium unleaded 98 RON	
Alternator, amps	140	
<b>Transmission</b>	<b>Front wheel drive</b>	
Gearbox	6 speed manual	6 speed Direct Shift Gearbox (DSG)
Type of clutch	Single plate dry clutch	Two electro-hydraulically operated multi-disc oil bath clutches
<b>Performance</b>		
0–100 km/h	7.2	6.9
Top speed, km/h	235	233
<b>Fuel Consumption*</b>		
Combined, L/100km	8.1	8.0
CO <sub>2</sub> emission g/km	194	192
Fuel tank capacity litres	55	55

\*Fuel consumption figures according to Australian Design Rule (ADR) 81/01  
The driving style, road and traffic conditions, environmental influences and vehicle condition can in practice lead to consumption figures which may differ from those calculated with these standards.

<b>Engine</b>	<b>2.0 litre FSI Turbo</b>
<b>Running Gear</b>	
<b>Suspension</b>	
Front Axle	Independent, McPherson struts with lower A-arms. Anti-roll bar. Sports Suspension.
Rear Axle	Independent, four-link with coil springs. Anti-roll bar. Sports Suspension.
<b>Steering</b>	Electro-mechanical power assisted rack & pinion steering
<b>Brake Systems</b>	Anti-lock Braking System (ABS) with Electronic Brake-pressure Distribution (EBD) and Brake Assist

<b>Brakes</b>		
Front	Ventilated discs 312mm diameter	
Rear	Solid discs 286mm diameter	
Traction control	Anti-Slip Regulation (ASR) and Electronic Stabilisation Program (ESP)	
Turning Circle m	10.9	
Weights	6 Speed Manual	6 Speed DSG
Tare weight kg	1340	1340
<small>(includes 10 litres of fuel)</small>		

Exterior Dimensions	
Overall length mm	4216
Width mm	1759
Height mm	1466
Wheelbase mm	2578
Track mm	
Front	1539
Rear	1528

Interior Dimensions	
Headroom mm	
Front	987
Rear	979
Shoulder room mm	
Front	1590
Rear	1386
Elbow room mm	
Front	1446
Rear	1437
Luggage area volume L	
Rear seat upright	347
Rear seat folded	1305

Interior Dimensions	
Luggage area floor length mm	
Rear seat upright	828
Rear seat folded	1581
Luggage area opening width mm	
Width between wheel arches mm	1006
Luggage load height mm	
To luggage cover	556
To roof lining	927

## Colours and Upholstery

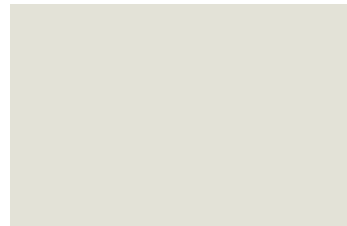
### Colours



Tornado Red



Black Magic Pearl Effect



Candy White



Shadow Blue Metallic

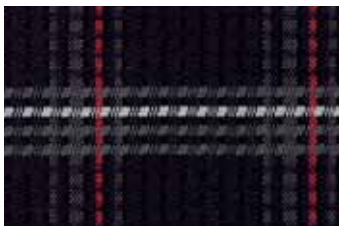


Reflex Silver Metallic

Please note: Metallic and Pearl Effect paint are optional at an extra cost. The print process does not allow for exact reproduction of the exterior or the upholstery colours. For further details, please contact your Volkswagen dealer.

### Upholstery

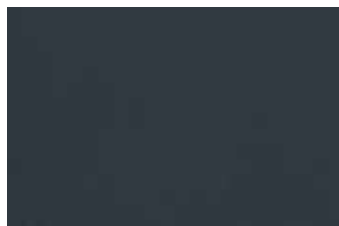
#### Cloths



Interlagos Cloth



#### Leathers



Anthracite Leather



Pure Beige Leather



#### Key

● Standard

○ Optional

○ – Not available in Candy White or Reflex Silver Metallic

## Owning a Volkswagen

### **Volkswagen New Vehicle Warranty**

Every new Volkswagen passenger vehicle is covered by a 3-year/100,000km (whichever occurs first) manufacturer's warranty, which includes Volkswagen Assist (24hr roadside assistance). Every new Volkswagen passenger vehicle is also covered by a 3-year paintwork and 12 year anti-corrosion perforation warranty.

### **Volkswagen Assist – Premium**

As a customer you can be assured that wherever you travel in Australia you will have access to roadside assistance 24 hours a day, 365 days a year. You will receive help in the event of a breakdown or accident and if required, your vehicle will be mobilised or transported to a Volkswagen authorised workshop.

As a Volkswagen owner you will also have access to the additional benefits of accommodation and car rental if your vehicle cannot be mobilised within 24 hours when you are travelling away from home. Furthermore, you can enjoy the benefits of Volkswagen Assist's concierge service for Australia-wide travel booking.

### **Ask about your finance options such as:**

- Advantage Leasing
- Personal Contract Plan
- Select Purchasing

### **Ask about your insurance options with Volkswagen Financial Services such as:**

- Volkswagen Motor Vehicle Cover
- Volkswagen Personal Equity Cover (Loan Protection Insurance)
- Volkswagen Asset Equity Cover

**Ask about Volkswagen Financial Services only at your participating authorised Volkswagen dealer.**

## Glossary

### **Anti-lock Braking System (ABS)**

When braking, wheel speed sensors measure the road wheel speed and should one or more wheels start to lock the ABS system reduces brake pressure to that wheel. This prevents the wheels from locking during heavy or emergency braking, enabling the vehicle to remain steerable.

### **Anti-Slip Regulation (ASR)**

ASR improves driving and steering characteristics by preventing the front wheels from spinning under acceleration. When a difference in driving wheel speed is detected (i.e. when one wheel starts to spin due to differences in road surfaces, e.g. due to water or dirt) the system automatically reduces engine torque. ASR is a switchable traction control system.

### **Brake Assist**

During emergency braking, Brake Assist aids the driver by increasing the brake pressure automatically to a level exceeding the locking limit. The ABS is thus quickly brought into the operating range, which enables maximum vehicle deceleration to be achieved.

### **Direct Shift Gearbox (DSG)**

DSG is a manual gearbox in which the gearshifts are controlled electronically. What makes the DSG unique is that it has 2 separate gear sets operated by 2 wet multi-plate clutches. The benefit of 2 gear sets and 2 multi-plate wet clutches is that one gear set and clutch is engaged driving the vehicle with the second clutch having already pre-selected the next gear awaiting for power to be transferred. As the next gear has already been pre-selected prior to power being applied, the gear change only takes 3–4 100ths of a second. There is virtually no interruption to power, traction or acceleration. The DSG also offers Tiptronic gear selection and sports mode.

### **Electronic Brake-pressure Distribution (EBD)**

Electronic, more sophisticated means of regulating the ratio of front/rear brake pressure. Settings are varied according to driving and load conditions to ensure each wheel is braked to the optimum extent.

### **Electronic Stabilisation Program (ESP)**

ABS and ASR traction control systems are integrated into the Electronic Stabilisation Program (ESP). In short, ESP helps ensure that the vehicle goes where you steer it even in extreme driving conditions. The ESP system constantly compares the actual movement of the vehicle with pre-determined values and should a situation arise where the vehicle starts to skid, ESP will apply the brakes to individual wheels and automatically adjust the engine's power output to correct the problem. ESP prevents the vehicle from losing control when trying to avoid an accident, for example. It also prevents spinning off on a curve due to either understeer or oversteer.



Volkswagen is distributed by Volkswagen Group Australia Pty Ltd, The Lakes Business Park, 6 Lord St, Botany, NSW 2019. ABN 140 931 178 76. Specifications are as planned at August 2005 and are subject to change without notice or obligation. Cars and accessories are shown for illustrative purposes only and may not depict Australian specifications. All Volkswagen approved parts and accessories are warranted for 2 years/unlimited kilometres. All warranties implied by legislation or otherwise, are excluded to the maximum extent permitted by law. The liability of Volkswagen shall, subject to the law, be limited at Volkswagen's discretion: 1. In the case of the goods, the repair or the cost of repair, or the replacement or the cost of replacement; and 2. In the case of services, the re-supply of the services or the cost of re-supply of the services. All information in this brochure is correct at time of publication, however variations may occur from time to time and Volkswagen, in so far as it is permitted by law to do so, shall not be liable in any way as a result of any reliance by any person on anything contained in this brochure. The colours shown in the brochure are indicative only and may vary from actual items owing to the printing process.



**Aus Liebe zum Automobil**

# **Volkswagen Golf GTI**

**Publication: VGA3006B**

**Internet: [www.volkswagen.com.au](http://www.volkswagen.com.au)**