



Aus Liebe zum Automobil

Golf R32







Golf R32. Pure energy.

Inspired by the technology and temperament of motorsport, the R32 will get your heart beating as no other car can. This phenomenal vehicle delivers all the dynamic handling and excitement you could ask for, along with the class-leading performance and driving enjoyment you'd expect from the fastest-ever Golf.

As soon as you set eyes on its characteristic chrome radiator grille with brushed aluminium surround, front lower air intakes, wide track, 20mm lowered sports suspension, large diameter centre twin exhausts and 18 inch 'Zolder' alloy wheels, the adrenalin buzz will begin. Hold tight. The R32 is about to take you places you've never been before.



Visual performance.

From the moment you first climb into the new Golf R32 your senses are stimulated. Wherever you look, you'll discover a wealth of features such as **dual zone climate control air conditioning** with a dust and pollen filter, a **ten-speaker Volkswagen sound package** with integrated

six disc CD changer, rain sensing windscreen wipers, automatic dimming interior rear-view mirror, automatic **coming/leaving home lighting function** and low light sensor which add to the already luxurious interior specification. Great attention to detail is clearly visible,



highlighted through several areas of **aluminum trim**, unique 'engine spin' decorative inserts in the dashboard, centre console and doors as well as silver instrument dial surrounds. The front sport seats in high quality 'Vienna' leather provide additional side bolsting and

the R32 logo embossed on the head restraints expresses the distinctive interior design. If you want to know how it feels to drive the ultimate compact sports car, simply take a test drive of the new Golf R32, which is available as either a three or five door.



Sit tight. The adventure begins.

- 01** The 'Vienna' leather front sport seats are individually heated, offer height and electric lumbar adjustment. They provide excellent lateral support and comfort.
- 02** The three-spoke leather trimmed steering wheel allows control of the radio and multi-function computer without taking your hands off the wheel.
- 03** A ten-speaker sound package with a six disc CD changer offers a truly first-class audio experience.
- 04** Race-inspired aluminium foot pedals with stylised 'R' logos have outstanding grip and are designed for performance, looks and safety. (Illustration shows pedals for DSG transmission).
- 05** The R32 offers a standard 6-speed manual transmission.

The exclusive sporting character of the Golf R32 is also reflected in the interior. As a top sports car, the R32 offers everything a driver could possibly desire. Once inside the new Golf R32, you'll notice a comprehensively equipped interior. **Deep front sport seats** with lumbar and height adjustment are designed to hold the driver and front passenger firmly in place whilst cornering, while subtle details such as **brushed aluminium foot pedals with 'R' logo**, gear knob, leather gaiter and handbrake grip indicate that this is no ordinary Golf.

The **leather trimmed three-spoke steering wheel** features **audio and trip computer functions** while the aluminium R32 logo underlines the vehicle's distinctiveness. Specify your R32 with the Direct Shift Gearbox (DSG) and you'll gain paddle shift controls for gear changes. For your convenience, the R32 is equipped with **foot well illumination** for driver and front passenger as well as front and rear reading lights.





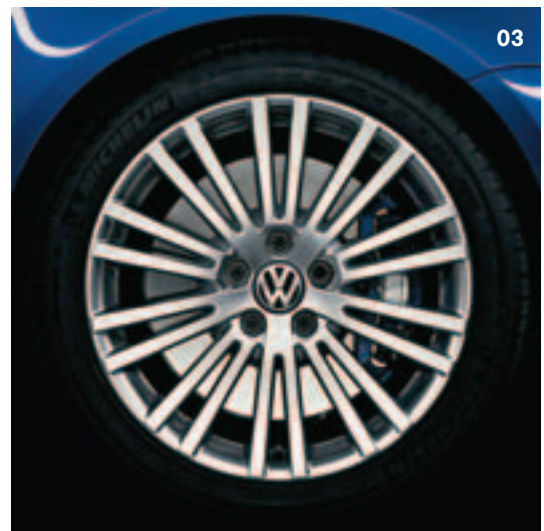
Feel the power at your fingertips.

The new Golf R32 combines the understatement of a Golf hatch with the performance of a fully-fledged sports car. Under its bonnet is an exceptional **3.2 litre V6 petrol engine** which due to its narrow cylinder angle of only 15° combines the compact dimensions of an in-line engine with the outstanding dynamics of a 6-cylinder unit. The sound of the engine alone lets you know that this is the ultimate Golf.

- 01** Behind the radiator grille lies the powerful 3.2 litre V6 engine capable of developing 184kW.
- 02** Twin exhaust tailpipes are more than just a hint at the sporting prowess of the R32 and are a unique styling feature.
- 03** An impressive braking system comprises large ventilated discs at both front and rear, while blue brake calipers are clearly visible behind the 18" 'Zolder' alloy wheels complete with 225/40 series tyres.

The R32 is capable of generating a phenomenal **184kW** at 6,300rpm of power and a hefty **320Nm of torque at 2,500 – 3,000rpm**. The engine thrusts the Golf forwards from any point in the rev range – pressing you hard into your sports bucket seat. This is an experience you will definitely want to repeat.

Such a powerful engine should only unleash its power in a safe and controlled manner, which is why the R32 is equipped with Volkswagen's sophisticated **4MOTION all-wheel-drive system**. Using the 4MOTION system, power is distributed to the wheels that need it most, ensuring all four wheels fully deliver the R32's power. The result is greater traction, improved safety and added driving pleasure, on any type of road.





Pole position.

Coupled with a slick 6-speed manual transmission, the V6 engine can accelerate the R32 from 0-100 km/h in an impressive **6.5 seconds**. This engine is a true sprinter, as you would expect of a thoroughbred sports car, and can be equipped with the option of the 6-speed **Direct Shift Gearbox (DSG)**, which allows super-swift gear changes without interrupting the acceleration of the car under power, resulting in a 0-100km/h time of just **6.2 seconds**.

As well as improved acceleration figures, the outstanding DSG gearbox also allows for improved fuel economy figures (9.8l/100km). The DSG gearbox can also be used in Tiptronic mode where gear selections can be made with paddles on the back of the steering wheel or using the gear lever.

For improved performance, the chassis has been lowered by 20mm ensuring agility and safety. The dampers and springs of the R32 are specially adapted to the needs of the high-performance driving. Extended sills and the individual design of the front and rear apron ensure even better aerodynamics and optimal road-holding.

- 01** The R32 offers an optional DSG transmission for sheer driving enjoyment.
- 02** Unique to the R32 are silver-trimmed instrument dials with white and blue illumination.
- 03** The steering wheel paddle shift allows control of gear selection when equipped with the DSG transmission.





The ultimate Golf.

There's no mistaking the definitive style and sporting bodyline of the R32. **Sleek body-coloured bumpers**, widened sill panels, door mirrors with integrated indicators, body-coloured side bump strips and door handles combine to create a **streamlined, aerodynamic exterior**. The elegant sportiness of the body is enhanced by a **deep front spoiler** and a **rear roof spoiler** that

makes the roof line look longer. It also improves the downforce on the rear axle and thus ensures more stable handling at higher speeds. The **tinted heat-insulated glass** reduces the build-up of heat in the interior when the car is in direct sunlight.

Bi-Xenon headlights with automatic self levelling and cleaning system add to the R32's visual impact, while



- 01** Darkened rear light clusters are another element that convey the R32's characteristic appearance.
- 02** The genuine article: uniquely shaped aluminium-look front grille with R32 badge and Bi-Xenon headlights.

the unique rear bumper with **centrally mounted chrome twin exhaust tailpipes** and sporty **18 inch 'Zolder' alloy wheels** hint at the performance potential. But the distinctive chrome front grille and R32 badge really say it all. This is the ultimate Golf, for those who appreciate true sports car performance.



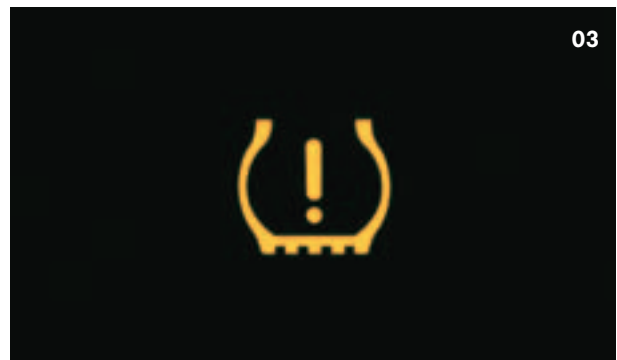
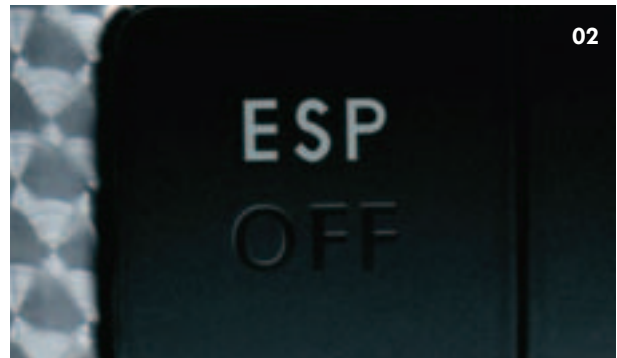
No compromise on safety.

As you'd expect from such a powerful performer, the R32 has an uncompromising approach to safety. For a start, front and rear **crumple zones** absorb the energy of an impact and divert the resulting forces around the impact-resisting **passenger safety cell**. The laser welded, fully galvanised body provides an exceptionally rigid body construction, while a **12-year anti-corrosion perforation warranty** is even more evidence of how seriously Volkswagen regards quality. Inside, the airbag system includes **driver's and front passenger's airbags,**

front seat side impact airbags and a curtain airbag system for both front and rear passengers. There are **three-point seat belts** for all seats with pre-tensioners and belt-force limiters in the front and height adjustable front and rear head restraints.

In addition, there are a number of active safety features that help you avoid an accident in the first place.

Anti-Slip Regulation (ASR) helps prevent wheel spin in slippery conditions, an **Electronic Stabilisation Program (ESP)** reacts to critical driving situations in milliseconds



- 01** There are a total of six airbags, optimally placed to protect the driver and passengers.
- 02** The Electronic Stabilisation Program (ESP) detects critical situations in milliseconds, braking individual wheels & reducing the engine's output to help bring the vehicle under control.
- 03** The low tyre pressure indicator alerts you via a visual warning if it detects a loss of pressure in a tyre due to a puncture.

by controlling the speed of individual wheels, and a confidence inspiring **Anti-Lock Braking System (ABS)** which helps to prevent the wheels from locking under heavy braking including **Brake Assist** which boosts the brake pressure when it detects an emergency braking situation. **Electronic Brake-Pressure Distribution (EBD)** regulates the ratio of front/rear brake pressure to ensure the R32 is braked optimally. All in all, the R32 is one of the safest cars on the road today, with a **five star Euro NCAP safety rating** in the front and side impact to prove it.



* Award source: 2004 Volkswagen Golf awarded "5 stars" by independent European motor vehicle assessment organisation Euro NCAP (European New Car assessment Programme) during Euro NCAP Spring testing, June 2004.



Add a personal touch.

- 01** The optional Recaro bucket front seats have an 'R' logo in the head restraint area and provide optimal lateral support during fast cornering.
- 02** The tilt and slide electric glass sunroof is extremely easy to use. Simply turn the automatic function to your desired setting. It also includes a sunblind for added comfort.
- 03** The R32 offers an optional satellite navigation system.
- 04** Optional rear parking sensors are an added safety feature.

You've expressed your individuality by selecting an R32. Now why not go one step further and add a personal touch by choosing from a wealth of optional equipment? How about **Recaro racing style bucket front seats**[^] with embossed 'R' logo, a 6-speed **Direct Shift Gearbox (DSG)**, a **satellite navigation system** or **rear parking distance sensors**? Additionally, you can choose an **electric glass sunroof** that is slide and tilt adjustable with sunblind or **walnut wood interior inserts** in the dashboard, centre console and doors. The choice is yours. It's time to design your R32 to your personal specification.

[^] The Recaro bucket front seats are not equipped with front side airbags, lumbar adjustment or seat back pockets.





The R32. You've arrived.

There is surely no greater sense of having arrived than when you pull up in your new Golf R32. You've experienced the ultimate drive, felt the power surge through your entire body and discovered the satisfaction of being at one with a car. This is surely what life is all about. And nothing beats the pleasure of having all those extra features at your fingertips – the electrically heated and adjustable door mirrors, the **rain and low light**

sensors, the electric windows, the automatic **coming/leaving home lighting function** and the alarm system with interior monitoring and tilt sensor – all fitted as standard. With **60/40 split folding rear seats**, a load through provision and centre armrest and, you've no complaints about interior space either. Finally, the R32 offers a host of **smart storage compartments** such as chillable glove box with



- 01** Bi-Xenon headlights produce a much clearer, brighter light, giving you a better view of the road ahead and helping you drive more safely. Headlight washers help keep headlights free from dirt, ensuring maximum visibility.
- 02** The characteristic R32 rear badge is featured on the radiator grille and tailgate.

illumination, centre console storage compartment, front seat backrest storage pockets and front door pockets with bottle holder. There is plenty of room and plenty of options. The R32 is all about sports performance – but without having to compromise on any of life's other little luxuries. Now you can enjoy the R32's exhilarating handling, energy and excitement to the full, whilst also enjoying the last word in luxury.

Specifications

Safety and Security

Airbags

- Driver and front passenger airbags
- Driver and front passenger side airbags
- Curtain airbags, front and rear

Anti-theft

- Electronic engine immobiliser
- Alarm system with interior monitoring and tilt sensor

Body

- Fully galvanised body with 12-year anti-corrosion perforation warranty
- Door side impact protection
- Rigid safety cell with front and rear crumple zones

Brakes

- Anti-lock Braking System (ABS)
- Electronic Brake-pressure Distribution (EBD)
- Brake Assist
- Blue brake callipers

Child restraint

- 3 child seat anchor points mounted on back of rear seat

Fog light

- Rear fog lamp

Head restraints

- Front head restraints, height adjustable
- Rear head restraints height adjustable (3)

Locking

- Remote central locking with deadlock mechanism
- 2 stage unlocking (programmable)
- Automatic locking after takeoff (programmable)
- Automatic unlocking after removing key from ignition (programmable)
- One touch lock / unlock for driver
- Child safety locks on rear doors (5 Door)

Luggage cover, removable

Seat belts

- Front height adjustable with pre-tensioners and belt force limiters
- 3 point seat belts for all passengers

Traction Control

- Anti-Slip Regulation (ASR)
- Electronic Stabilisation Program (ESP)
- 4MOTION all wheel drive

Exterior Equipment/Styling

Body Enhancements

- Chrome radiator grille highlights
- Front lower air intake and with black grille inserts
- Radiator grille surround in brushed aluminium finish
- Rear roof spoiler
- R32 badges on radiator grille and tailgate
- Unique rear bumper with centrally mounted dual chrome exhaust tail pipes
- Widened side sill panels

Colour coding

- Bumper bars
- Bumper and side moulding strips
- Door handles
- Outer rear view mirrors

Tinted Glass

- Darkened rear tail light clusters
- Heat insulating tinted glass

Wheels

- Alloy wheels (Zolder) 18 x 7 1/2" with 225/40 R18 tyres and anti-theft wheel bolts
- Low tyre pressure indicator
- Weight and space saving spare wheel

Specifications continued

Comfort and Convenience

Armrest

- Front centre armrest with storage box, 2 rear air outlets and 2 rear cup holders
- Rear seat centre armrest with load through provision

Air conditioning

- Dual zone electronic climate control, CFC free
- Dust and pollen filter

Automatic dimming rear-view mirror

Carpet mats

- Front and rear

Cruise control

Cup holders

- Front x 2, with bottle opener
- Rear x 2
- One litre bottle holders in front door pockets

Entry/warning reflectors in front and rear (5 Door) doors

Fuel filler flap

- Electrically operated via switch on drivers door

Grab handles

- Soft fold away grab handles, front and rear

Headlights

- Bi-Xenon headlights for high/low beams with clear lightweight polycarbonate lenses
- Automatic self levelling and headlight cleaning system
- Headlight-on warning buzzer
- Low light sensor
- Coming/leaving home function
- Combined headlight and fog light switch

In car Entertainment

- AM/FM stereo with security coding
- Audio functions mounted on steering wheel
- 6 disc CD changer, mounted in-dash
- Volkswagen sound package with 250W amplifier and 10 speakers

Instrumentation

- Unique speedometer & tachometer, electronic odometer and tripmeter, service interval display, digital clock, fuel & coolant gauges, low fuel & washer fluid warning lights, brake pad wear indicator and white/blue adjustable illumination

Interior highlights

- Aluminium/leather gear knob, leather gaiter and handbrake grip
- Aluminium pedals with 'R' flags
- 'Engine Spin' aluminium inserts in dashboard, centre console and doors
- Silver trim on instrument dials

Interior lighting

- With time delay
- Foot well illumination, driver and front passenger
- Front reading lights (2) with chrome trim
- Rear passenger reading lights (2)

Luggage compartment

- Chrome plated load restraining hooks (2)
- Luggage compartment light
- Luggage net under luggage cover
- Shopping bag hooks
- Storage box in side lining
- 12 volt socket

Mirrors

- Electrically heated and adjustable
- LED turn indicators integrated in exterior mirrors

Paint

- Metallic or Pearl Effect paint finish

Power steering

- Electro-mechanical, vehicle speed and steering input sensitive

Specifications continued

Seating

- Easy entry front seat backrest release function (3 Door)
- Electric lumbar adjustment for front seats
- Front R32 sports seats with additional side bolstering and embossed 'R' logo
- Height adjustment for front seats
- Individually heated front seats
- Split folding rear seat backrest (60/40) with load through provision and centre armrest

Steering wheel

- 3 spoke leather rimmed flat bottomed steering wheel with aluminium 'R' logo insert
- Audio and trip computer functions
- Gear shift paddles (DSG)
- Height and reach adjustable steering wheel

Storage

- Chillable glove box with illumination and lockable
- Centre console storage compartment
- Coin tray and 12 volt socket in console
- Front seat backrest storage pockets
- Front door pockets with one litre bottle holders
- Lower dashboard storage compartment with lid
- Sunglass compartment in roof console

Trip Computer

- Multi-function trip computer – trip time, trip length, average speed, average and current fuel consumption, distance till empty, speed warning & outside temperature

Upholstery

- Vienna leather

Vanity mirrors

- With covers and illuminated on driver's and passenger's side

Wipers

- 2 speed aero wipers with wash/wipe
- Rain sensor
- Rear window with wash/wipe and intermittent wipe

Windows

- Power front/rear (5 Door), with roll-back function, driver with one-touch up-down
- Remote operated convenience close and open feature

12V socket

- Centre console
- Luggage compartment

Optional Equipment

Automatic Transmission, 6 speed Direct Shift Gearbox (DSG)

Recaro bucket front seats in Vienna leather with embossed 'R' logo, heating and height adjustment[^]

Electric glass sunroof, slide and tilt adjustable with sunblind

Electrically operated drivers seat[#]

Parking distance sensors, rear

Satellite navigation system with 6 1/2" colour map screen and audible driving recommendations, large format multi-function instrument display, 6 disc CD changer mounted in centre console and 10 speakers[†].

Walnut wood interior inserts in dashboard, centre console and doors

[^] The bucket front seats are not equipped with front side airbags, lumbar adjustment or seat back pockets.

[#] The electrically operated driver's seat is not available with 3 Door models or in conjunction with the Recaro bucket front seats.

[†] The satellite navigation system is not equipped with the Volkswagen sound package.

Specifications continued

Technical Specifications

Engine	3.2 litre V6	
Type	6 cylinder 'V' configuration petrol	
Installation	Front transverse	
Cubic capacity, litres/cc	3.2 / 3189	
Bore/stroke, mm	84.0 / 95.9	
Valves	4 valves per cylinder	
Camshafts	Dual overhead camshafts	
Max power, kW @ rpm	184 @ 6300	
Max torque, Nm @ rpm	320 @ 2500 – 3000	
Compression ratio	10.85:1	
Fuel system	Bosch ME7.1.1 electronic multi-point injection system	
Ignition system	Electronic ignition	
Exhaust emission control	3-way catalytic converter with lambda probe	
Emission level	EU IV	
Fuel type (Recommended)	Premium unleaded 98 RON	
Transmission	4MOTION all wheel drive	
Gearbox	6 speed manual	6 speed Direct Shift Gearbox (DSG)
Type of clutch	Single plate dry clutch	Two electro-hydraulically operated multi-disc oil bath clutches
Performance		
0 – 100 km/h, seconds	6.5	6.2
Top speed, km/h	250	248
Fuel Consumption *		
Combined, L/100km	10.8	9.8
CO2 emission g/km	269	235
Fuel tank capacity litres	60	60

* Fuel consumption figures according to Australian Design Rule (ADR) 81/01. The driving style, road and traffic conditions, environmental influences and vehicle condition can in practice lead to consumption figures which may differ from those calculated with these standards.

Engine	3.2 litre V6	
Running Gear		
Suspension		
Front Axle	Independent, McPherson struts with lower A-arms. Anti-roll bar. Sports Suspension lowered 20mm.	
Rear Axle	Independent, four-link with coil springs. Anti-roll bar. Sports Suspension lowered 20mm.	
Steering	Electro-mechanical power assisted rack & pinion steering	
Brake Systems	Anti-lock Braking System (ABS) with Electronic Brake-pressure Distribution (EBD) and Brake Assist	
Brakes		
Front	Ventilated discs 345mm diameter	
Rear	Ventilated discs 310mm diameter	
Traction control	Anti-Slip Regulation (ASR), Electronic Stabilisation Program (ESP) and 4MOTION all wheel drive	
Turning Circle m	10.9	
Weights[^]		
Tare weight kg	6 speed manual 1510 (1530)	6 speed Direct Shift Gearbox (DSG) 1510 (1530)

[^](Figures in brackets relate to 5 Door models)

Specifications continued

Exterior Dimensions

Overall length mm	4246
Width mm	1759
Height mm	1465
Wheelbase mm	2578
Track mm	
Front	1533
Rear	1515

Interior Dimensions[^]

Headroom mm	
Front	987
Rear	979
Elbow room mm	
Front	1448 (1446)
Rear	1479 (1437)
Luggage area volume L	
Rear seat upright	275
Rear seat folded	1230
Luggage area floor length mm	
Rear seat upright	786
Rear seat folded	1560
Luggage area opening width mm	
	1227
Width between wheel arches mm	
	1006
Luggage load height mm	
To luggage cover	456
To roof lining	827

[^](Figures in brackets relate to 5 Door models)



Colours and Upholstery

Colours



United Grey Metallic



Reflex Silver Metallic



Black Magic Pearl Effect

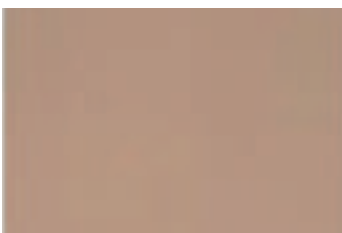


Deep Blue Pearl Effect

Please note: Metallic and Pearl Effect paint are optional at an extra cost. The print process does not allow for exact reproduction of the exterior or the upholstery colours. For further details, please contact your Volkswagen Dealer.

Please contact your Volkswagen Dealer for further information on colours and upholstery combinations.

Upholstery – Leather



Pure Beige Leather # * +



Anthracite Leather

Key

Pure Beige Leather is not available with Reflex Silver Metallic.

* Only available in conjunction with walnut wood interior trim.

+ Not available with Recaro bucket front seats.

Owning a Volkswagen

Volkswagen New Vehicle Warranty

Every new Volkswagen passenger vehicle is covered by a 3-year/100,000km (whichever occurs first) manufacturer's warranty, which includes Volkswagen Assist (24hr roadside assistance). Every new Volkswagen passenger vehicle is also covered by a 3-year paintwork and 12 year anti-corrosion perforation warranty.

Volkswagen Assist – Premium

As a customer you can be assured that wherever you travel in Australia you will have access to roadside assistance 24 hours a day, 365 days a year. You will receive help in the event of a breakdown or accident and if required, your vehicle will be mobilised or transported to a Volkswagen authorised workshop. As a Volkswagen owner you will also have access to the additional benefits of accommodation and car rental if your vehicle cannot be mobilised within 24 hours when you are travelling away from home. Furthermore, you can enjoy the benefits of Volkswagen Assist's concierge service for Australia-wide travel booking.

Volkswagen Extended Warranty

Why not continue the confidence of a Volkswagen Warranty by purchasing Volkswagen Confidence Plus – an Insurance Policy designed to provide cover for the repair or replacement of a failed mechanical or electrical part, after the expiration of the Volkswagen standard new vehicle warranty. Volkswagen Confidence Plus is available for an additional period of 12 or 24 months unlimited kms. In addition, Volkswagen Confidence Plus includes the continuation of your Volkswagen Assist, our 24-hour roadside assistance program. You can purchase Volkswagen Confidence Plus at any time within your Volkswagen standard new vehicle warranty (3-year/100,000km). For more information contact your participating local dealer or visit volkswagen.com.au

Volkswagen Service

Your Authorised Volkswagen Service Centre is part of Volkswagen's global Quality Management System, ensuring all dealers are certified to ISO 9001:2000 – an internationally recognised Quality Standard. Authorised Volkswagen Service Centres have factory trained Technicians equipped with the very latest diagnostic equipment, specialist tooling and Volkswagen Genuine Parts. An Authorised Volkswagen Service Centre undertakes work in accordance to factory specified guidelines and maintenance schedules

Volkswagen Genuine Parts®

Volkswagen Genuine Parts® are designed for your vehicle and approved by Volkswagen, with particular regard to safety. The workmanship, dimensional accuracy and materials used in these parts comply with factory specifications. To ensure safety and reliability, Volkswagen recommends the use of Volkswagen Genuine Parts®. Volkswagen Authorised Dealers offer a 2-year warranty on Genuine Parts from the date of purchase.

Volkswagen Finance

Buying, Borrowing or Leasing, Volkswagen Finance will certainly make you think differently about financing and insuring your new Volkswagen. Committed to meeting the needs of Volkswagen drivers, across Australia, we offer a range of leasing, financing and insurance products, each with distinct advantages depending on your specific circumstances. Our packages are personalised to suit your individual requirements. You design your plan so that it meets your budgeting needs and can rest assured that there will be no surprises along the way. Speak to your local participating Volkswagen Dealer today to put together a financial solution that best suits your lifestyle.

Glossary

4MOTION

An all-wheel-drive system that provides the best possible traction at all road speeds, in all weather and road conditions. An electronic Haldex clutch responds to traction losses at the front and rear axles and directs torque to the axle with the best traction.

Anti-lock Braking System (ABS)

When braking, wheel speed sensors measure the road wheel speed and should one or more wheels start to lock the ABS system reduces brake pressure to that wheel. This prevents the wheels from locking during heavy or emergency braking, enabling the vehicle to remain steerable.

Anti-Slip Regulation (ASR)

ASR improves driving and steering characteristics by preventing the front wheels from spinning under acceleration. When a difference in driving wheel speed is detected (i.e. when one wheel starts to spin due to differences in road surfaces, e.g. due to water or dirt) the system automatically reduces engine torque. ASR is a switchable traction control system.

Brake Assist

During emergency braking, Brake Assist aids the driver by increasing the brake pressure automatically to a level exceeding the locking limit. The ABS is thus quickly brought into the operating range, which enables maximum vehicle deceleration to be achieved.

Electronic Brake-pressure Distribution (EBD)

Electronic, more sophisticated means of regulating the ratio of front/rear brake pressure. Settings are varied according to driving and load conditions to ensure each wheel is braked to the optimum extent.

Direct Shift Gearbox (DSG)

DSG is a manual gearbox in which the gearshifts are controlled electronically. What makes the DSG unique is that it has 2 separate gear sets operated by 2 wet multi-plate clutches. The benefit of 2 gear sets and 2 multi-plate wet clutches is that one gear set and clutch is engaged driving the vehicle with the second clutch having already pre-selected the next gear awaiting for power to be transferred. As the next gear has already been pre-selected prior to power being applied, the gear change only takes 3-4 100ths of a second. There is virtually no interruption to power, traction or acceleration. The DSG also offers Tiptronic gear selection and sports mode.

Electronic Stabilisation Program (ESP)

ABS and ASR traction control systems are integrated into the Electronic Stabilisation Program (ESP). In short, ESP helps ensure that the vehicle goes where you steer it even in extreme driving conditions. The ESP system constantly compares the actual movement of the vehicle with pre-determined values and should a situation arise where the vehicle starts to skid, ESP will apply the brakes to individual wheels and automatically adjust the engine's power output to correct the problem. ESP prevents the vehicle from losing control when trying to avoid an accident, for example. It also prevents spinning off on a curve due to either understeer or oversteer.

Volkswagen is distributed by Volkswagen Group Australia Pty Ltd, The Lakes Business Park, 6 Lord St. Botany, NSW 2019. ABN 14 093 117 876. Specifications are as planned at May 2006, for model year 2007 and are subject to change without notice or obligation. Cars and accessories are shown for illustrative purposes only and may not depict Australian specifications. All Volkswagen approved parts and accessories are warranted for 2 years/unlimited kilometres. All warranties implied by legislation or otherwise, are excluded to the maximum extent permitted by law. The liability of Volkswagen shall, subject to the law, be limited at Volkswagen's discretion: 1. In the case of the goods, the repair or the cost of repair, or the replacement or the cost of replacement; and 2. In the case of services, the re-supply of the services or the cost of re-supply of the services. All information in this brochure is correct at time of publication, however variations may occur from time to time and Volkswagen, in so far as it is permitted by law to do so, shall not be liable in any way as a result of any reliance by any person on anything contained in this brochure. The colours shown in the brochure are indicative only and may vary from actual items owing to the printing process. Authorised Volkswagen dealers will provide up-to-date information on model application, design feature, prices and availability on request.

Volkswagen Insurance & Volkswagen Extended Warranty are provided by Allianz Australia Insurance Limited (Allianz), AFS Licence No. 234708, ABN 15 000 122 850. In arranging this insurance Volkswagen Financial Services Australia Limited, ABN 20 097 071 460 & Volkswagen Group Australia Pty Ltd, ABN 14 093 117 876 and the authorised dealers act as agents of Allianz and not as your agent. Volkswagen Finance is a trading name of Volkswagen Financial Services Australia Limited. Locked Bag 5009, Alexandria NSW 2015. Tel: 02 9695 6311.



Aus Liebe zum Automobil

Golf R32

Publication: VGA6000

Internet: www.volkswagen.com.au