



Aus Liebe zum Automobil

Volkswagen Golf GT

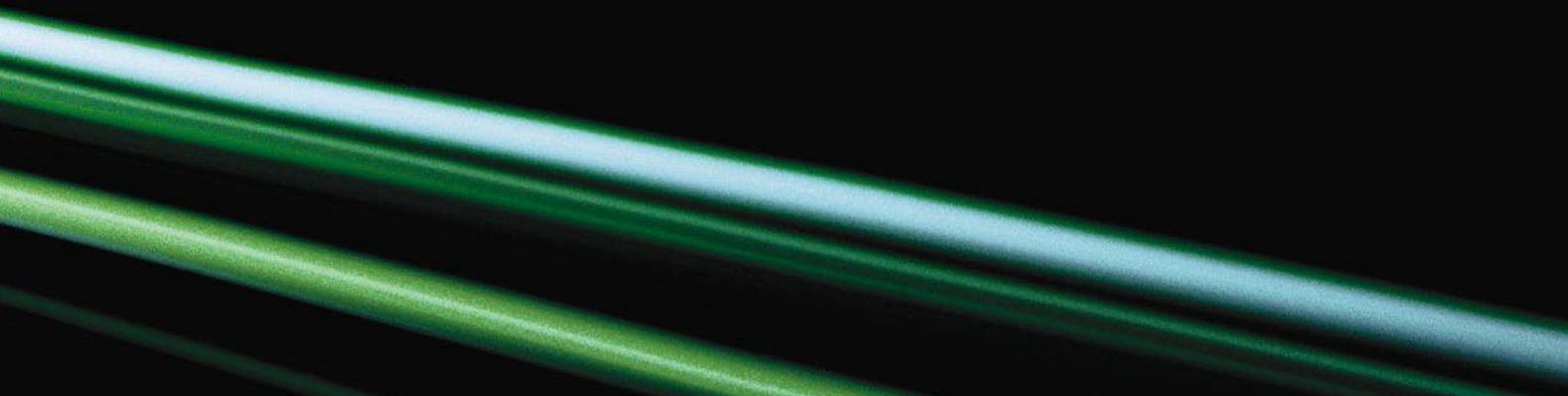




The new Golf GT. Now you can have the best of both worlds.

The Golf has always been a pioneer in its class, setting new standards in power, performance and sheer driving enjoyment. Now comes another spine-tingling innovation, designed to get your pulse racing like never before, as TSI technology makes its debut in the new Golf GT. Representing a world first, this ground-breaking

technology utilises FSI direct petrol injection and twin-charging by both a supercharger and turbocharger. The result is phenomenal – an engine that combines all the benefits of diesel with those of petrol, delivering outstanding responsiveness, economy and low emissions. Never before have enjoyment and economy been so close.





4

Bei Ölstand über max.
Gefahr von Katalysatorschäden



To avoid damage to
catalytic converter oil must
not exceed maximum mark

TSI





TSI engine. Maximum power with minimum consumption.

The new GT comes equipped with the ground-breaking TSI engine which produces phenomenal torque and power while maintaining impressive fuel economy and low CO₂ emissions. With the 1.4 litre TSI 125kW engine, Volkswagen has pushed technology to new limits, developing the world's first ever twin-charged direct injection petrol engine. Achieving 100km/h in just 7.9 seconds, with high torque delivering maximum power at both low revs and high speeds.

What's more, you can continue driving all day because if there's one thing the TSI engine hates, it's petrol stations. With a fuel consumption figure of just 7.7 liters per 100km* in the combined cycle, it's an economical powerhouse. This innovative TSI technology was recognised by motoring experts when it was named 'Best New Engine 2006' at the International Engine of the Year awards.

* This is combined city/highway driving as per Australian Standard ADR 81/01.

01 The twin-charged engine – comprising a mechanically-driven supercharger and exhaust-driven turbocharger – which work in tandem to eliminate turbo lag enabling the TSI engine to achieve maximum torque at both low revs and high speed.



Presented by UKIP Media & Events Automotive Magazines

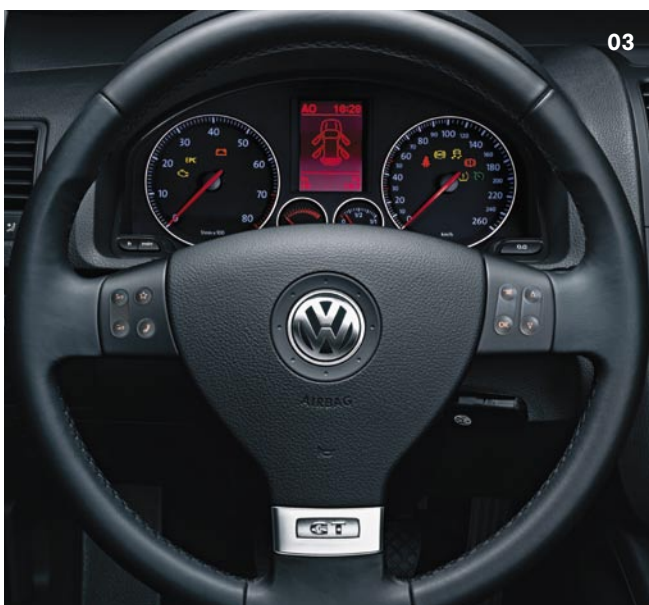
Best New Engine 2006
Volkswagen 1.4-litre TSI Twincharger



A sensory experience.

- 01 The Winter Driving Program adapts driving optimally to weather and road conditions. When the switch is activated, torque is reduced when driving off to prevent wheel spin.
- 02 The boost pressure gauge within the instrument panel informs you how much power the TSI engine is generating.
- 03 The three-spoke multi-function leather steering wheel is ergonomically designed for comfort and is aesthetically pleasing with its unique GT logo.
- 04 The badge on the front grille places the GT in distinguished company and identifies the new Golf GT as true sports performer.

As you'd expect from a true sports performer, the GT's exterior hints at the promise of what is to come. Inside the aesthetics exude comfort and control. The front sports seats with lumbar and height adjustment in unique anthracite red upholstery give you comfortable support when taking tight corners, while the 'Black Onyx' decorative inserts enhance the sports appeal. The three-spoke leather trimmed steering wheel with GT logo leaves you in no doubt as to what you're driving, and the multi-function dashboard display provides you with essential information at a glance. This is a car that not only performs – it looks good too.



Specifications

Safety and Security

Airbags

- Driver and front passenger airbags
- Driver and front passenger side airbags
- Curtain airbags, front and rear

Body

- Fully galvanised 5 door body with 12 year anti-corrosion perforation warranty
- Door side impact protection
- Rigid safety cell with front and rear crumple zones

Brakes

- Anti-lock Braking System (ABS)
- Electronic Brake-pressure Distribution (EBD)
- Brake Assist
- Hazard warning system triggered in emergency braking situation

Child restraint

- Child seat anchor points mounted on back of rear seat (3)

Electronic engine immobiliser

Fog lights

- Front fog lights, mounted in lower bumper
- Rear fog lamp

Head restraints

- Front safety optimised head restraints, height adjustable
- Rear head restraints height adjustable and removable (3)

Locking

- Remote central locking with deadlock mechanism
- 2 stage unlocking (programmable)
- Automatic locking after takeoff (programmable)
- Automatic unlocking after removing key from ignition (programmable)
- One touch lock / unlock for driver
- Child safety locks on rear doors

Luggage cover, removable

Seat belts

- Front height adjustable with pre-tensioners and belt force limiters
- 3 point seat belts for all passengers

Traction Control

- Anti-Slip Regulation (ASR)
- Electronic Stabilisation Program (ESP)
- Winter Driving Program

Exterior Equipment/Styling

Body Enhancements

- GT badges on radiator grille and tailgate
- Front lower air intake with black grille inserts
- Radiator grille surround in body colour
- Unique rear bumper with exposed dual exhaust tail pipes

Colour coding

- Bumper bars
- Bumper and side moulding strips
- Door handles
- Outer rear view mirrors

Tinted Glass

- Heat insulating tinted glass

Wheels

- Alloy wheels (Classixs) 17 x 7" with 225/45 R17 tyres and anti-theft wheel bolts (4)
- Weight and space saving spare wheel

Specifications continued

Comfort and Convenience

Armrest

- Front centre armrest with storage box, 2 rear air outlets and 2 rear cup holders
- Rear seat centre armrest with load through provision

Air conditioning

- Dual zone climate control, CFC free
- Dust and pollen filter

Automatic dimming rear-view mirror

Cruise control

Cup holders

- Front (2) with bottle opener
- Rear (2)
- One litre bottle holders in front door pockets

Entry/warning reflectors in front and rear doors

Fuel filler flap

- Electrically operated via switch on drivers door

Grab handles

- Soft fold away grab handles, front and rear

Headlights

- Halogen twin headlights with clear polycarbonate lens
- Headlight-on warning buzzer
- Internal headlight range adjustment
- Low light sensor with automatic headlight function
- Coming / leaving home function
- Combined headlight and fog light switch

In car Entertainment

- AM/FM stereo with security coding
- Audio functions mounted on steering wheel
- CD player
- Speakers, front and rear (8)

Instrumentation

- Speedometer & tachometer, electronic odometer and tripmeter, service interval display, digital clock, fuel & boost pressure gauges, coolant temperature warning light, low fuel warning light, brake pad wear indicator, blue adjustable illumination

Interior highlights

- Leather gearshift knob, leather gaiter and handbrake grip
- 'Black onyx' inserts in dashboard and doors
- Chrome trim on instrument dials

Interior lighting

- With time delay
- Foot well illumination, driver and front passenger
- Front reading lights (2) with chrome trim
- Rear passenger reading lights (2)

Luggage compartment

- Chrome plated load restraining hooks
- Luggage compartment light
- Shopping bag hooks
- Storage box in side lining
- 12 volt socket

Mirrors

- Electrically heated and adjustable
- LED turn indicators integrated in exterior mirrors

Power steering

- Electro-mechanical, vehicle speed and steering input sensitive

Specifications continued

Comfort and Convenience continued

Seating

- Front sports seats
- Height adjustment for front seats
- Lumbar adjustment for front seats
- Split folding rear seat backrest (60/40) with load through provision and centre armrest

Steering wheel

- 3 spoke leather rimmed steering wheel with aluminium 'GT' logo insert
- Audio and trip computer functions
- Gear shift paddles (DSG)
- Height and reach adjustable steering wheel

Storage

- Chillable glove box with illumination and lockable
- Centre console storage compartment (without optional CD changer)
- Coin tray and 12 volt socket in console
- Front seat backrest storage pockets
- Front door pockets with one litre bottle holders
- Sunglass compartment in roof console

Trip Computer

- Multi-function trip computer – driving time, trip length, average speed, average and current fuel consumption, distance till empty, speed warning function, audio and convenience display

Upholstery

- Brick' GT sports cloth seats

Vanity mirrors

- With covers and illuminated on driver's and passenger's side

Wipers

- 2 speed aero wipers with wash/wipe
- Rain sensor
- Rear window with wash/wipe and intermittent wipe

Windows

- Power front/rear, with roll-back function, driver with one-touch up-down
- Remote operated convenience close and open feature

12V socket

- Centre console
- Luggage compartment

Optional Equipment

Anti-theft alarm system with interior monitoring and tilt sensor

Automatic Transmission, 6 speed Direct Shift Gearbox (DSG)

Bi-Xenon headlights with automatic self levelling and headlight cleaning system

Electric glass sunroof, slide and tilt adjustable with sunblind

Leather upholstery with heated front sports seats and electric lumbar adjustment

Metallic / Pearl Effect paint

Parking distance sensors, rear

Satellite navigation system with 6½" colour map screen with audible driving recommendations and 10 speakers

Please note: The radio/navigation system cannot play an audio CD and operate the navigation simultaneously.

6 disc CD changer, mounted in centre console

Available only in conjunction with Satellite Navigation

Technical Specifications

Engine	1.4 litre TSI
Type	4 cylinder inline Twincharger petrol engine
Installation	Front transverse
Cubic capacity, litres/cc	1.4 / 1390
Bore/stroke, mm	76.5 / 75.6
Valves	4 valves per cylinder
Camshafts	Dual overhead camshafts
Max power, kW @ rpm	125 @ 6000
Max torque, Nm @ rpm	240 @ 1750 - 4500
Compression ratio	10.0:1
Fuel system	FSI direct petrol injection system
Induction	Mechanical supercharger and exhaust gas turbocharger
Ignition system	Electronic
Exhaust emission control	3-way catalytic converter with lambda probe
Fuel type (Recommended)	Premium unleaded 98 RON

Transmission	Front wheel drive	
Gearbox	6 speed manual	6 speed Direct Shift Gearbox (DSG)
Type of clutch	Single plate dry clutch	Two electro-hydraulically operated multi-disc oil bath clutches

Performance		
0 – 100 km/h, seconds	7.9	7.7
Top speed, km/h	220	218

Fuel Consumption *		
Combined, L/100km	7.7	7.7
CO ₂ emission g/km	184	183
Fuel tank capacity litres	55	55

* Fuel consumption figures according to Australian Design Rule (ADR) 81/01
The driving style, road and traffic conditions, environmental influences and vehicle condition can in practice lead to consumption figures which may differ from those calculated with these standards.

Running Gear		
Suspension	Front Axle	Independent, MacPherson struts with lower A-arms. Anti-roll bar. Sports Suspension
	Rear Axle	Independent, four-link with coil springs. Anti-roll bar. Sports Suspension.
Steering		Electro-mechanical power assisted rack & pinion steering
Brake Systems		Anti-lock Braking System (ABS) with Electronic Brake-pressure Distribution (EBD) and Brake Assist
Brakes	Front	Ventilated discs
	Rear	Solid discs
Traction control		Anti-Slip Regulation (ASR), Electronic Stabilisation Program (ESP) and Winter Driving Program
Turning Circle m		10.9

Technical Specifications continued

Weights

Weights	6 speed manual	6 speed DSG
Tare weight kg (including 10 litres of fuel)	1340	1375

Exterior Dimensions

Overall length mm		4204
Width mm		1759
Height mm		1479
Wheelbase mm		2578
Track mm	Front	1540
	Rear	1518

Interior Dimensions

Headroom mm	Front	987
	Rear	979
Shoulder room mm	Front	1590
	Rear	1386
Elbow room mm	Front	1446
	Rear	1437
Luggage area volume L	Rear seat upright	347
	Rear seat folded	1305
Luggage area floor length mm	Rear seat upright	828
	Rear seat folded	1581
Luggage area opening width mm		1044 (width at widest point)
Width between wheel arches mm		1006
Luggage Load height mm	To luggage cover	556
	To roof lining	927

Exterior Colour

Interior Trim	Black Magic PE	Candy White	Reflex Silver M	Tornado Red	United Grey M	Shadow Blue M
Anthracite-Red 'Brick' cloth	●	●	●	●	●	●
Anthracite Vienna leather	○	○	○	○	○	○
Latte Macchiato Vienna leather	○	–	–	–	–	○

● = Standard ○ = Optional – = Not Available

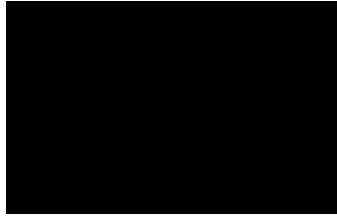
Please note Metallic and Pearl Effect paint are optional at extra cost.

Colours and Upholstery

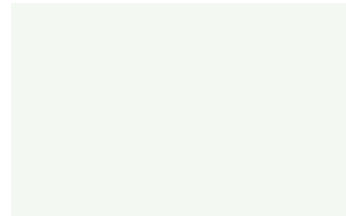
Colours



Tornado Red



Black Magic Pearl Effect



Candy White



Shadow Blue Metallic



Reflex Silver Metallic

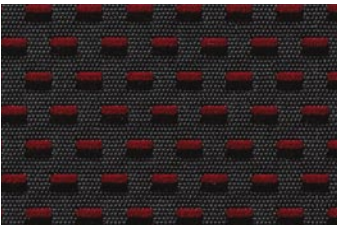


United Grey Metallic

Please note: Metallic and Pearl Effect paint are optional at an extra cost. The print process does not allow for exact reproduction of the exterior or the upholstery colours. For further details, please contact your Volkswagen dealer.

Upholstery

Cloths



Anthracite Red 'Brick' Cloth

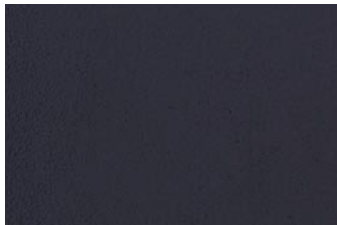


Key

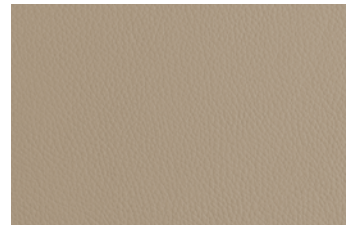
● Standard

○ Optional

Leathers



Anthracite Vienna Leather



Latte Macchiato Vienna Leather



Owning a Volkswagen

Volkswagen New Vehicle Warranty

Every new Volkswagen passenger vehicle is covered by a 3-year/100,000km (whichever occurs first) manufacturer's warranty, which includes Volkswagen Assist (24hr roadside assistance). Every new Volkswagen passenger vehicle is also covered by a 3-year paintwork and 12 year anti-corrosion perforation warranty.

Volkswagen Assist – Premium

As a customer you can be assured that wherever you travel in Australia you will have access to roadside assistance 24 hours a day, 365 days a year. You will receive help in the event of a breakdown or accident and if required, your vehicle will be mobilised or transported to a Volkswagen authorised workshop. As a Volkswagen owner you will also have access to the additional benefits of accommodation and car rental if your vehicle cannot be mobilised within 24 hours when you are travelling away from home. Furthermore, you can enjoy the benefits of Volkswagen Assist's concierge service for Australia-wide travel booking.

Volkswagen Extended Warranty

Why not continue the confidence of a Volkswagen Warranty by purchasing Volkswagen Confidence Plus – an Insurance Policy designed to provide cover for the repair or replacement of a failed mechanical or electrical part, after the expiration of the Volkswagen standard new vehicle warranty. Volkswagen Confidence Plus is available for an additional period of 12 or 24 months unlimited kms. In addition, Volkswagen Confidence Plus includes the continuation of your Volkswagen Assist, our 24-hour roadside assistance program. You can purchase Volkswagen Confidence Plus at any time within your Volkswagen standard new vehicle warranty (3-year/100,000km). For more information contact your participating local dealer or visit volkswagen.com.au

Volkswagen Service

Your Authorised Volkswagen Service Centre is part of Volkswagen's global Quality Management System, ensuring all dealers are certified to ISO 9001:2000 – an internationally recognised Quality Standard. Authorised Volkswagen Service Centres have factory trained Technicians equipped with the very latest diagnostic equipment, specialist tooling and Volkswagen Genuine Parts. An Authorised Volkswagen Service Centre undertakes work in accordance to factory specified guidelines and maintenance schedules

Volkswagen Genuine Parts®

Volkswagen Genuine Parts® are designed for your vehicle and approved by Volkswagen, with particular regard to safety. The workmanship, dimensional accuracy and materials used in these parts comply with factory specifications. To ensure safety and reliability, Volkswagen recommends the use of Volkswagen Genuine Parts®. Volkswagen Authorised Dealers offer a 2-year warranty on Genuine Parts from the date of purchase.

Volkswagen Finance

Buying, Borrowing or Leasing, Volkswagen Finance will certainly make you think differently about financing and insuring your new Volkswagen. Committed to meeting the needs of Volkswagen drivers, across Australia, we offer a range of leasing, financing and insurance products, each with distinct advantages depending on your specific circumstances. Our packages are personalised to suit your individual requirements. You design your plan so that it meets your budgeting needs and can rest assured that there will be no surprises along the way. Speak to your local participating Volkswagen Dealer today to put together a financial solution that best suits your lifestyle.

Glossary

Anti-lock Braking System (ABS)

When braking, wheel speed sensors measure the road wheel speed and should one or more wheels start to lock the ABS system reduces brake pressure to that wheel. This prevents the wheels from locking during heavy or emergency braking, enabling the vehicle to remain steerable.

Anti-Slip Regulation (ASR)

ASR improves driving and steering characteristics by preventing the front wheels from spinning under acceleration. When a difference in driving wheel speed is detected (i.e. when one wheel starts to spin due to differences in road surfaces, e.g. due to water or dirt) the system automatically reduces engine torque. ASR is a switchable traction control system.

Brake Assist

During emergency braking, Brake Assist aids the driver by increasing the brake pressure automatically to a level exceeding the locking limit. The ABS is thus quickly brought into the operating range, which enables maximum vehicle deceleration to be achieved.

Direct Shift Gearbox (DSG)

DSG is a manual gearbox in which the gearshifts are controlled electronically. What makes the DSG unique is that it has 2 separate gear sets operated by 2 wet multi-plate clutches. The benefit of 2 gear sets and 2 multi-plate wet clutches is that one gear set and clutch is engaged driving the vehicle with the second clutch having already pre-selected the next gear awaiting for power to be transferred. As the next gear has already been pre-selected prior to power being applied, the gear change only takes 3-4 100ths of a second. There is virtually no interruption to power, traction or acceleration. The DSG also offers Tiptronic gear selection and sports mode.

Electronic Brake-pressure Distribution (EBD)

Electronic, more sophisticated means of regulating the ratio of front/rear brake pressure. Settings are varied according to driving and load conditions to ensure each wheel is braked to the optimum extent.

Electronic Stabilisation Program (ESP)

ABS and ASR traction control systems are integrated into the Electronic Stabilisation Program (ESP). In short, ESP helps ensure that the vehicle goes where you steer it even in extreme driving conditions. The ESP system constantly compares the actual movement of the vehicle with pre-determined values and should a situation arise where the vehicle starts to skid, ESP will apply the brakes to individual wheels and automatically adjust the engine's power output to correct the problem. ESP prevents the vehicle from losing control when trying to avoid an accident, for example. It also prevents spinning off on a curve due to either understeer or oversteer.

Winter Driving Program

The Winter Driving Program adapts driving optimally to weather and road conditions. When the switch is activated, torque is reduced when driving off to prevent wheel spin.

Volkswagen is distributed by Volkswagen Group Australia Pty Ltd, The Lakes Business Park, 6 Lord Street, Botany, NSW 2019. ABN 14 093 117 876. Specifications are as planned at May 2007, for Model Year 2007 and are subject to change without notice or obligation. All information in this specification sheet is correct at the time of publication, however variations may occur from time to time and Volkswagen, in so far as it is permitted by law to do so, shall not be liable in any way as a result of any reliance by any person on anything contained in this specification sheet. Authorised Volkswagen dealers will provide up-to-date information on model application, design feature, prices and availability on request.

Volkswagen Insurance & Volkswagen Extended Warranty are provided by Allianz Australia Insurance Limited (Allianz), AFS Licence No. 234708, ABN 15 000 122 850. In arranging this insurance Volkswagen Financial Services Australia Limited, ABN 20 097 071 460 & Volkswagen Group Australia Pty Ltd, ABN 14 093 117 876 and the authorised dealers act as agents of Allianz and not as your agent. Volkswagen Finance is a trading name of Volkswagen Financial Services Australia Limited. Locked Bag 5009, Alexandria NSW 2015. Tel: 02 9695 6311.



Aus Liebe zum Automobil

Volkswagen Golf GT

Publication: VGA3010

Internet: www.volkswagen.com.au