



Aus Liebe zum Automobil

Volkswagen Golf





Overseas specification vehicles are shown in this brochure.
Some features and options may not be available.



The Golf philosophy.

You don't create one of the world's favourite cars by thinking like everyone else. And never has our approach of 'thinking differently' been more evident than in our Golf. The result is the safest, most refined and efficient Golf ever.



Attention to detail.

Volkswagen's engineers have long understood that when it comes to **quality and innovation**, little things make a big difference. So, for example, the Golf features windscreen wipers that return to an alternate 'park' position in order

to minimise wear. The Volkswagen badge on the rear of the Golf is also the hatch release – a design feature that contributes to its elegant lines. With a longer, wider and taller body, there's more headroom and legroom for you



and your passengers. Being wider provides improved stability, handling and safety. While 120 metres of precise laser welding means the Golf is extremely rigid, strong and quiet. Through the use of the highest quality materials

and advanced manufacturing techniques, the Golf offers a world-leading **12-year anti-corrosion perforation warranty.**





The Golf range.

The Golf range provides three distinct model lines – the **Trendline**, **Comfortline** and **Sportline**. Within these models, there's also the choice of four engines – two petrol and two turbo diesel engines. While there's a model to suit all needs and tastes, each Golf in the range is built to

Volkswagen's exacting standards, incorporates the latest technology and provides the re-assurance of a five star safety rating. The only thing you'll need to contemplate is the Golf range, to find a Golf to suit you.



Interior.

- 01 The interior of the Golf features a 3 spoke steering wheel with audio and trip computer functions (on Comfortline and Sportline) and a radio/CD player. (Illustration shows optional Satellite Navigation).
- 02 The Golf is equipped with a radio/CD player for a superb sound system.
- 03 A precise 6 speed manual transmission is standard on all models (except 1.6 Trendline).
- 04 Safe and practical: all rear seat passengers are protected by a 3-point seat belt and head restraint, while the rear seat folds to provide a huge load space.
- 05 The easy-to-read instruments have a distinctive blue dash illumination.

The sound of silence – the Golf’s interior is **superbly quiet** thanks to the increased stiffness of its exterior and new cabin insulation techniques. High quality finishes and controls provide an ambience of prestige. The **ergonomics**, which have always been Golf’s strong suit, continue to evolve with the inclusion of essential comfort features such as a height and reach adjustable steering wheel and a height adjustable driver’s seat. The Golf’s interior dimensions are remarkable – with sufficient head, shoulder and legroom to make every drive a pleasure. The Golf’s interior design detail extends to the distinctive blue dash illumination, while the chillable glovebox keeps drinks cool on hot summer days. Occupant **security** is extremely important, so the Golf is equipped with a programmable central locking system that provides an auto-locking setting for added security. The Golf’s floor-mounted ‘standing’ accelerator ensures shoes with a heel are never caught between the pedal and floor.





Safety.

Safety features were high on the agenda when developing the Golf. Front and rear crumple zones absorb the energy of an impact and divert the resulting forces around the passenger safety cell. Driver and passenger front, front side and full length curtain airbags are standard. Every occupant is protected by a three-point seat belt and head restraint. The front seatbelts are height adjustable to

ensure the best possible fit and inbuilt pre-tensioners pull the seat belt tight in a collision.

A class-leading package of 'active' safety features is standard including **Anti-lock Braking System (ABS)**, **Electronic Brake-pressure Distribution (EBD)** and **Traction Control (ASR)** – to help you avoid an accident.



- 01** The passenger safety cell is formed from steel panels with optimised strengths utilising the most advanced manufacturing techniques and materials.
- 02** The standard safety equipment offers driver and front passenger airbags, front side airbags for driver and passenger and curtain airbags, front and rear.
- 03** ABS prevents the wheels from locking during heavy braking, enabling the driver to maintain steering control and maximising braking efficiency. In the event of an accident, driver and passenger front, front side and full length curtain airbags contribute to the Golf's five star safety rating.

The optional **Electronic Stabilisation Program (ESP)** integrates with the ABS and ASR traction control systems to ensure control of the vehicle, even in extreme driving conditions.

All of these safety features culminate in the Golf achieving an impressive **five star safety rating** in the front and side impact testing conducted by Euro NCAP*.

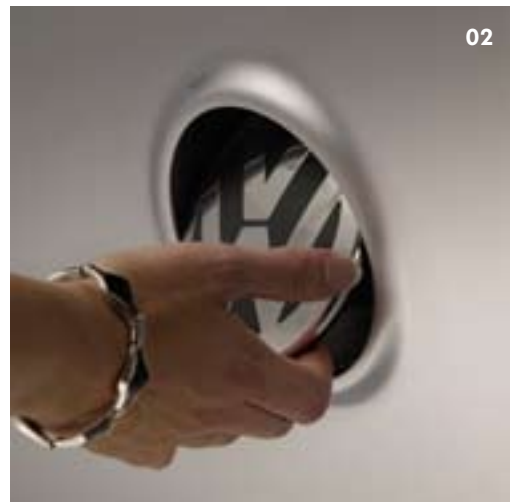
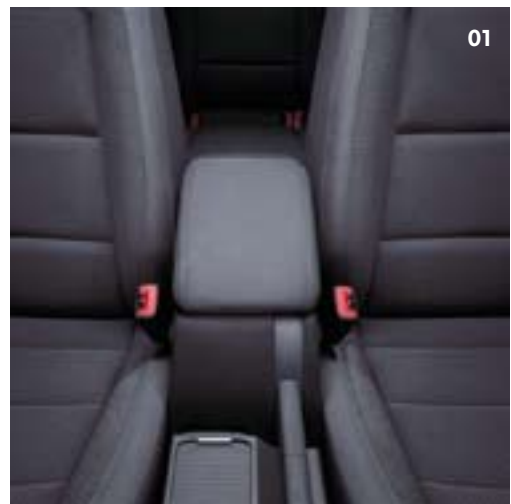


*Award source: 2004 Volkswagen Golf awarded "5 stars" by independent European motor vehicle safety assessment organisation Euro NCAP (European New Car Assessment Programme) during Euro NCAP Spring testing, June 2004.



Golf Trendline.

Whichever way you look at it, the Golf Trendline represents brilliant value. From a safety perspective there's ABS, driver and passenger front, front side and full length curtain airbags and front seatbelt pre-tensioners with belt force limiters. The well-appointed interior has semi-automatic air conditioning and a premium CD sound system that incorporates four speakers. The power



side mirrors are heated to make demisting quick and easy on those cold winter mornings. Power steering, power windows (front and rear) and remote central locking are also standard. The front centre armrest incorporates a storage box and air conditioning outlets for the comfort of rear seat passengers.

- 01** The centre console with armrest offers a convenient storage solution.
- 02** The Volkswagen badge doubles as the hatch release.



1.6 Trendline.

The 1.6 Trendline features the brilliantly engineered and economical 1.6 litre petrol engine. The simplicity of the engine's design ensures you'll enjoy years of trouble free motoring along with 75kW of power and 148Nm of torque. The 1.6 is teamed with a 5-speed manual transmission that provides precise shifts and further adds to the 1.6's efficiency. A **6-speed automatic transmission** with Tiptronic function is also available as an option.

1.9 TDI Trendline.

Volkswagen's **Turbo Diesel Injection (TDI)** engines incorporate advanced **Pumpe-Düse** technology – injecting fuel in precise quantities and at incredibly high pressure. The result is a more efficient and clean burning engine, providing huge amounts of torque, effortless performance and remarkable fuel economy. The smooth and quiet 1.9 TDI offers low fuel consumption of just **5.5L/100km** (combined city/highway cycle, 6-speed manual), making it possible to drive up to 1,000kms on a single tank. From an environmental perspective, the clean burning



1.9 TDI already meets the tough EU4 emission level requirements. Producing 77kW of power at 4,000 rpm and an impressive 250Nm of torque at just 1,900 rpm, the 1.9 TDI can be teamed with either the precise 6-speed manual or the optional **6-speed Direct Shift Gearbox (DSG) transmission.**

01 The Golf 1.9 TDI is powered by a 4 cylinder 1.9 litre Turbo Diesel 77kW engine.

02 The Golf offers the convenience of a practical central compartment on the dash panel.

Direct Shift Gearbox (DSG).

DSG is a 6-speed gearbox in which the clutch and gearshift is controlled electronically. What makes the DSG unique is that the next gear is already pre-selected and awaiting for power to be transferred, resulting in a gear change that only takes 3-4 100ths of a second. The benefit is that there is virtually no interruption to power, traction or acceleration. Furthermore, because it ensures optimum transmission of the engine power, DSG provides excellent fuel consumption and driving satisfaction.



Golf Comfortline.

The interior of the Golf Comfortline offers an atmosphere of luxury. The velour upholstery is the first hint that the Comfortline is special. The height-adjustable front seats are specially designed just for this model and include an adjustable lumbar support. In-car entertainment is provided by a superb **eight-speaker CD sound system**, with volume control from the leather multi-function steering wheel. An **automatic dimming rear view mirror** prevents the driver being dazzled at night by the lights of

following traffic. Innovative **rain sensing wipers** activate and adjust their speed according to the severity of the rain. The headlights automatically turn on in low light and the intelligent **'coming home'** function illuminates the area around the car at night, when locking or unlocking. Even the front foot-wells are illuminated to make getting in and out of your Golf easier in the dark. Externally the 15 x 6.5" **'Misano'** alloy wheels add to the Golf's attractive lines.



The Comfortline also features **cruise control** which is conveniently located on the indicator stalk to assist with keeping a consistent speed on long freeway drives. There's a handy fold-down load through section in the back seat which is perfect for a set of snow skis. Front and rear reading lights are provided as well as illuminated vanity mirrors for the driver and front passenger.

- 01** The Golf Comfortline is fitted with 15" Misano alloy wheels.
- 02** A practical sunglass storage compartment is standard on Comfortline and Sportline.
- 03** Cruise Control is standard on the Comfortline and Sportline.



1.6 Comfortline.

The 1.6 Comfortline features the brilliantly engineered and economical 1.6 litre petrol engine. The simplicity of the engine's design ensures you'll enjoy years of trouble free motoring along with 75kW of power and 148Nm of torque. The 1.6 is teamed with a 5-speed manual transmission that provides precise shifts and further adds to the 1.6 Comfortline's efficiency. A **6-speed automatic transmission** with Tiptronic function is also available as an option.

1.9 TDI Comfortline.

Volkswagen's 1.9 TDI is an efficient and clean burning engine, providing huge amounts of torque, effortless performance and remarkable fuel economy. The smooth and quiet 1.9 TDI offers low fuel consumption of just **5.5L/100km** (combined city/highway cycle, 6-speed manual), making it possible to drive up to 1,000kms on a single tank. From an environmental perspective, the clean burning 1.9 TDI already meets the tough EU4 emission level requirements. Producing 77kW of power at 4,000 rpm and an impressive 250Nm of torque at just 1,900 rpm, the 1.9 TDI can be teamed with either the precise 6-speed manual or the optional **6-speed DSG transmission**.



2.0 FSI Comfortline.

FSI represents Volkswagen's new **direct petrol injection** technology. With an FSI engine, fuel is injected directly into the combustion chambers in an extremely precise measurement, reducing petrol consumption while increasing performance. The 2.0 FSI engine produces 110kW of power at 6,000 rpm and 200Nm of torque at 3,500 rpm. You can team it with the precise 6-speed manual transmission or the optional automatic 6-speed Tiptronic transmission with **Dynamic Shift Program (DSP)**.

2.0 TDI Comfortline.

The 2.0 TDI engine combines Volkswagen's renowned **Pumpe-Düse** design with multi-valve technology to deliver torque that rivals many large V6 petrol engines. With 103kW of power at 4,000 rpm and an incredible **320Nm of torque** from as low as 1,750 rpm – the 2.0 TDI engine provides an exciting and rewarding drive. The 2.0 TDI's advanced design provides the dual benefit of strong acceleration while offering low fuel consumption of just **5.7L/100km** (combined city/highway cycle, 6-speed manual). You can team the 2.0 TDI with either the precise 6-speed manual or the optional **6-speed DSG transmission**.



Golf Sportline.

Created for the sports driver, the exciting 2.0 FSI Sportline and 2.0 TDI Sportline are clearly distinguished by the lowered **sports suspension**, 16 x 6.5" 'Magny Cours' **alloy wheels**, and front fog lights. Body coloured bumpers, door handles and side moulds give the Sportline a sleeker look. The **dual-zone climate control** air conditioning allows the driver and passenger to individually control their own temperatures.

The Sportline includes **cruise control** and a multi-function trip computer that provides information on your trip, fuel consumption and distance. The **leather bound multi-function steering wheel** integrates with the premium eight-speaker CD sound system to enable audio controls. To ensure your driving comfort, the bolstered **front sports seats** also include adjustable lumbar supports.



2.0 FSI Sportline.

The superb 2.0 litre FSI engine produces 110kW of power and accelerates from 0 to 100km/h in 8.8 seconds (6 speed manual). With the **direct petrol injection technology** (FSI), fuel is injected directly into the combustion chambers in an extremely precise measurement, reducing petrol consumption while increasing performance.

2.0 TDI Sportline.

The powerful 2.0 litre Turbo Diesel Injection (TDI) engine produces 103kW of power at 4,000 rpm and 320Nm of torque from as low as 1,750rpm. Whilst low fuel consumption of just 5.7l/100km (for the 6 speed manual) is impressive. You can team the 2.0 TDI with either the precise 6 speed manual or the optional 6 speed DSG transmission.





01

Optional equipment.

The Golf offers a great list of options to add a personal touch to your new car. For Comfortline and Sportline, choose from an optional **leather upholstery package** with heated front sports seats and electric lumbar adjustment. Let the outside in and opt for the comfort of an **electric glass sunroof** that's slide and tilt adjustable with sunblind. A convenient option is the **satellite navigation system** that keeps you heading in the right direction and delivers perfect sound quality.

You can also team your Golf with an automatic **6 speed Tiptronic with Dynamic Shift Program (DSP)** for petrol models or an automatic **6 speed Direct Shift Gearbox (DSG)** for TDI models. All models can also be equipped with optional **rear parking sensors**.



02



03

- 01** The Golf offers an optional leather upholstery package with heated front sports seats and electric lumbar adjustment.
- 02** The optional satellite navigation system guides you to your destination and also delivers perfect sound quality.
- 03** The optional electric glass sunroof is slide and tilt adjustable with sunblind.

Specifications

	1.6 Trendline	1.9 TDI Trendline	1.6 Comfortline	1.9 TDI Comfortline	2.0 FSI Comfortline	2.0 TDI Comfortline	2.0 FSI Sportline	2.0 TDI Sportline
Safety and Security								
Airbags								
Driver and front passenger airbags	S	S	S	S	S	S	S	S
Driver and front passenger side airbags	S	S	S	S	S	S	S	S
Curtain airbags, front and rear	S	S	S	S	S	S	S	S
Anti-theft								
Electronic engine immobiliser	S	S	S	S	S	S	S	S
Body								
Fully galvanised with 12 year anti-corrosion perforation warranty	S	S	S	S	S	S	S	S
Door side impact protection	S	S	S	S	S	S	S	S
Rigid safety cell with front and rear crumple zones	S	S	S	S	S	S	S	S
Brakes								
Anti-lock Braking System (ABS)	S	S	S	S	S	S	S	S
Electronic Brake-pressure Distribution (EBD)	S	S	S	S	S	S	S	S
Hazard warning system triggered in emergency braking situation	S	S	S	S	S	S	S	S
Child restraint								
3 child seat anchor points mounted on back of rear seat	S	S	S	S	S	S	S	S
Fog lights								
Front fog lights, mounted in lower bumper	O	O	O	O	O	O	S	S
Rear fog lamp	S	S	S	S	S	S	S	S
Head restraints								
Front head restraints, height adjustable	S	S	S	S	S	S	S	S
Rear head restraints height adjustable and removable (3)	S	S	S	S	S	S	S	S
Locking								
Remote central locking with deadlock mechanism	S	S	S	S	S	S	S	S
2 stage unlocking (programmable)	S	S	S	S	S	S	S	S
Automatic locking after takeoff (programmable)	S	S	S	S	S	S	S	S
One touch lock / unlock for driver	S	S	S	S	S	S	S	S
Child safety locks on rear doors	S	S	S	S	S	S	S	S
Luggage cover, removable	S	S	S	S	S	S	S	S
Seat belts								
Front height adjustable with pre-tensioners and belt force limiters	S	S	S	S	S	S	S	S
3 point seat belts for all passengers	S	S	S	S	S	S	S	S
Traction Control								
Anti-Slip Regulation (ASR)	S	S	S	S	S	S	S	S
Exterior Equipment / Styling								
Colour coding								
Bumper bars	S	S	S	S	S	S	S	S
Bumper and side moulding strips	-	-	-	-	-	-	S	S
Door handles	-	-	-	-	-	-	S	S
Outer rear view mirrors	-	-	S	S	S	S	S	S
Tinted Glass								
Heat insulating tinted glass	S	S	S	S	S	S	S	S
Wheels								
Steel wheels 15 x 6" with 195/65 R15 tyres	S	S	-	-	-	-	-	-
Alloy wheels (Misano) 15 x 6½" with 195/65 R15 tyres and anti-theft wheel bolts	-	-	S	S	S	S	-	-
Alloy wheels (Magny Cours) 16 x 6½" with 205/55 R16 tyres and anti-theft wheel bolts	-	-	-	-	-	-	S	S
Weight and space saving spare wheel	S	S	S	S	S	S	S	S
Comfort and Convenience								
Armrest								
Front centre armrest with storage box, 2 rear air outlets and 2 rear cup holders	S	S	S	S	S	S	S	S
Rear seat centre armrest with load through provision	-	-	S	S	S	S	S	S
Air conditioning								
Semi-automatic, CFC free	S	S	S	S	S	S	-	-
Dual zone climate control, CFC free	-	-	-	-	-	-	S	S
Dust and pollen filter	S	S	S	S	S	S	S	S
Automatic dimming rear-view mirror	-	-	S	S	S	S	S	S

Key S Standard O Optional - Not available

Specifications continued

	1.6 Trendline	1.9 TDI Trendline	1.6 Comfortline	1.9 TDI Comfortline	2.0 FSI Comfortline	2.0 TDI Comfortline	2.0 FSI Sportline	2.0 TDI Sportline
Comfort and Convenience (continued)								
Cruise control	-	-	S	S	S	S	S	S
Cup holders								
Front x 2, with bottle opener	S	S	S	S	S	S	S	S
Rear x 2	S	S	S	S	S	S	S	S
One litre bottle holders in front door pockets	S	S	S	S	S	S	S	S
Entry/warning reflectors in front and rear doors	S	S	S	S	S	S	S	S
Fuel filler flap								
Electrically operated via switch on drivers door	S	S	S	S	S	S	S	S
Grab handles								
Soft fold away grab handles	S	S	S	S	S	S	S	S
Headlights								
Halogen twin headlights with clear polycarbonate lens	S	S	S	S	S	S	S	S
Headlight-on warning buzzer	S	S	S	S	S	S	S	S
Low light sensor with automatic headlight function	-	-	S	S	S	S	S	S
Coming / leaving home function	-	-	S	S	S	S	S	S
Combined headlight and fog light switch, internal angle adjustment	S	S	S	S	S	S	S	S
In Car Entertainment								
AM/FM stereo with security coding	S	S	S	S	S	S	S	S
Audio functions mounted on steering wheel	-	-	S	S	S	S	S	S
CD player	S	S	S	S	S	S	S	S
4 speakers, front	S	S	-	-	-	-	-	-
8 speakers, front and rear	-	-	S	S	S	S	S	S
Instrumentation								
Speedometer & tachometer, electronic odometer and tripmeter, service interval display, digital clock, fuel & coolant gauges, low fuel warning light, brake pad wear indicator, blue adjustable illumination	S	S	S	S	S	S	S	S
Interior highlights								
Titanium inserts in dashboard and doors	-	-	S	S	S	S	S	S
Chrome trim on instrument cluster and gearshift lever surround	S	S	S	S	S	S	S	S
Leather gear knob and handbrake grip	-	-	S	S	S	S	S	S
Interior lighting								
With time delay	S	S	S	S	S	S	S	S
Foot well illumination, driver and front passenger	-	-	S	S	S	S	S	S
Front reading lights	S	S	S	S	S	S	S	S
Rear passenger reading lights	-	-	S	S	S	S	S	S
Luggage compartment								
Chrome plated load restraining hooks	S	S	S	S	S	S	S	S
Luggage compartment light	S	S	S	S	S	S	S	S
Shopping bag hooks	-	-	S	S	S	S	S	S
Storage box in side lining	-	-	S	S	S	S	S	S
12 volt socket	-	-	S	S	S	S	S	S
Mirrors								
Electrically heated and adjustable	S	S	S	S	S	S	S	S
LED turn indicators integrated in exterior mirrors	S	S	S	S	S	S	S	S
Power steering								
Electro-mechanical, vehicle speed and steering input sensitive	S	S	S	S	S	S	S	S
Seating								
Height adjustment for driver's seat	S	S	-	-	-	-	-	-
Height adjustment for front seats	-	-	S	S	S	S	S	S
Lumbar adjustment for front seats	-	-	S	S	S	S	S	S
Split folding rear seat backrest (60/40)	S	S	S	S	S	S	S	S
Steering wheel								
3 spoke steering wheel	S	S	-	-	-	-	-	-
3 spoke leather rimmed steering wheel	-	-	S	S	S	S	S	S
Audio and trip computer functions	-	-	S	S	S	S	S	S
Height and reach adjustable steering wheel	S	S	S	S	S	S	S	S

Specifications continued

	1.6 Trendline	1.9 TDI Trendline	1.6 Comfortline	1.9 TDI Comfortline	2.0 FSI Comfortline	2.0 TDI Comfortline	2.0 FSI Sportline	2.0 TDI Sportline
Comfort and Convenience (continued)								
Storage								
Central compartment on the dash panel	S	S	S	S	S	S	-	-
Chillable glove box with illumination	S	S	S	S	S	S	S	S
Centre console storage compartment	S	S	S	S	S	S	S	S
Coin tray and 12 volt socket in console	S	S	S	S	S	S	S	S
Front seat backrest storage pockets	-	-	S	S	S	S	S	S
Front door pockets with one litre bottle holders	S	S	S	S	S	S	S	S
Sunglass compartment in roof console	-	-	S	S	S	S	S	S
Trip Computer								
Multi-function trip computer – trip time, trip length, average speed, average and current fuel consumption, distance till empty & outside temperature	-	-	S	S	S	S	S	S
Upholstery								
Cloth seats	S	S	-	-	-	-	-	-
Comfort velour seats	-	-	S	S	S	S	-	-
Sports cloth seats	-	-	-	-	-	-	S	S
Vanity mirrors								
Driver's and passenger's side vanity mirrors	S	S	S	S	S	S	S	S
Illuminated on driver's and passenger's side	-	-	S	S	S	S	S	S
Wipers								
2 speed aero wipers with wash/wipe and vehicle speed sensitive intermittent wipe	S	S	S	S	S	S	S	S
Rain sensor	-	-	S	S	S	S	S	S
Rear window with wash/wipe and intermittent wipe	S	S	S	S	S	S	S	S
Windows								
Power front/rear, with roll-back function, driver with one-touch up-down	S	S	S	S	S	S	S	S
Remote operated convenience close and open feature	S	S	S	S	S	S	S	S
12V socket								
Centre console	S	S	S	S	S	S	S	S
Luggage compartment	-	-	S	S	S	S	S	S
Optional Equipment								
Automatic Transmission, 6 speed Tiptronic with Dynamic Shift Program (DSP)	O	-	O	-	O	-	O	-
Automatic Transmission, 6 speed Direct Shift Gearbox (DSG)	-	O	-	O	-	O	-	O
Electric glass sunroof, slide and tilt adjustable with sunblind	-	-	O	O	O	O	O	O
Electronic Stabilisation Program (ESP) with Brake Assist	O	O	O	O	O	O	O	O
Front fog lights, mounted in lower bumper	O	O	O	O	O	O	S	S
Leather upholstery with heated front sports seats and electric lumbar adjustment	-	-	O	O	O	O	O	O
Metallic / Pearl Effect paint	O	O	O	O	O	O	O	O
Parking distance sensors, rear	O	O	O	O	O	O	O	O
Satellite navigation with large format 6½" colour map screen and audible driving recommendations#	-	-	O	O	O	O	O	O
6 Disc CD changer mounted in centre console^	-	-	O	O	O	O	O	O
# Please note: The radio/navigation system cannot play an audio CD and operate the navigation simultaneously.								
^ Available only in conjunction with satellite navigation								

Technical Specifications

Engine	1.6 litre		2.0 litre FSI		1.9 litre TDI		2.0 litre TDI	
Type	4 cyl inline petrol		4 cyl inline petrol		4 cyl inline diesel		4 cyl inline diesel	
Installation	Front transverse		Front transverse		Front transverse		Front transverse	
Cubic capacity, litres/cc	1.6/1595		2.0/1984		1.9/1896		2.0/1968	
Bore/stroke, mm	81.0/77.4		82.5/92.8		79.5/95.5		81.0/95.5	
Max power, kW @ rpm	75 @ 5600		110 @ 6000		77 @ 4000		103 @ 4000	
Max torque, Nm @ rpm	148 @ 3800		200 @ 3500		250 @ 1900		320 @ 1750–2500	
Compression ratio	10.5:1		11.5:1		19.0:1		18:1	
Fuel system	Simos 7.1 multi-point injection system		Bosch Motronic MED 9.5.10 FSI injection system		Bosch EDC 16 with unit injectors (Pumpe-Düse)		Bosch EDC 16 with unit injectors (Pumpe-Düse)	
Ignition system	Electronic		Electronic		Compression		Compression	
Exhaust emission control	Exhaust gas recirculation, catalytic converter, lambda probes		Exhaust gas recirculation, NOx storage-type catalytic converter, two precatalytic converters and lambda probes		Exhaust gas recirculation and oxidising catalytic converter		Exhaust gas recirculation and oxidising catalytic converter	
Fuel type (Recommended)	Premium unleaded 95 RON		Premium unleaded 98 RON		Diesel 49CZ		Diesel 49CZ	
Emission level	EU IV		EU IV		EU IV		EU IV	
Transmission	Front Wheel Drive		Front Wheel Drive		Front Wheel Drive		Front Wheel Drive	
Gearbox	5 Speed Manual	6 Speed Auto	6 Speed Manual	6 Speed Auto	6 Speed Manual	6 Speed DSG	6 Speed Manual	6 Speed DSG
Performance								
0 – 100 km/h	11.4	12.5	8.8	9.5	11.1	11.2	9.3	9.3
Top speed, km/h	184	181	212	206	187	185	205	203
Fuel Consumption*								
Combined, L/100km	7.5	8.3	8.0	8.6	5.5	5.8	5.7	6.1
CO ₂ emission g/km	180	199	192	206	149	157	154	165
Fuel tank capacity – litres	55	55	55	55	55	55	55	55
Running Gear								
Suspension	Front Axle	Independent, MacPherson struts with lower A-arms. Anti-roll bar. Sports Suspension (Sportline).						
	Rear Axle	Independent, four-link with coil springs. Anti-roll bar. Sports Suspension (Sportline).						
Steering	Electro-mechanical power assisted rack & pinion steering.							
Brake Systems	Anti-lock Braking System (ABS) with Electronic Brake-pressure Distribution (EBD).							
Brakes	Front	Ventilated Discs						
	Rear	Solid Discs						
Turning Circle (m)	10.9							
Weights	5 Speed Manual	6 Speed Auto	6 Speed Manual	6 Speed Auto	6 Speed Manual	6 Speed DSG	6 Speed Manual	6 Speed DSG
Tare Mass Kgs	1240	1275	1290	1290	1330	1330	1350	1350
Towing Capacity kg	Braked†							
	1200	1200	1200	1200	1200	1200	1200	1200
	Unbraked							
	640	640	640	640	640	640	640	640

† With trailer brakes up to gradient of 12%.

* Fuel consumption figures according to Australian Design Rule (ADR) 81/01

The driving style, road and traffic conditions, environmental influences and vehicle condition can in practice lead to consumption figures which may differ from those calculated with these standards.

Dimensions

Exterior Dimensions

Overall length mm		4204
Width mm		1759
Height mm		1485
Wheelbase mm		2578
Track mm	Front	1539
	Rear	1528

Interior Dimensions

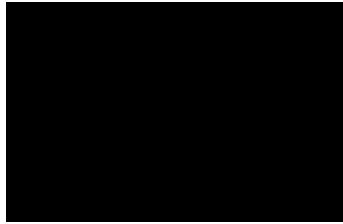
Headroom mm	Front	987
	Rear	979
Shoulder room mm	Front	1590
	Rear	1386
Elbow room mm	Front	1446
	Rear	1437
Luggage area volume L	Rear seat upright	347
	Rear seat folded	1305
Luggage area floor length (Rear seat upright) mm		828
Luggage area opening width mm		1044 (width at widest point)
Width between wheel arches mm		1006
Luggage load height mm	To luggage cover	556
	To roof lining	927

Colours and Upholstery

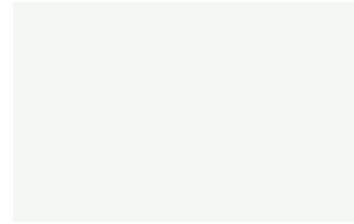
Colours



Sunset Red Metallic



Black Magic Pearl Effect



Candy White



New River Blue Metallic



Reflex Silver Metallic



United Grey Metallic

Please note: Metallic and Pearl Effect paint are optional at an extra cost. The print process does not allow for exact reproduction of the exterior or the upholstery colours. For further details, please contact your Volkswagen Dealer.

Please contact your Volkswagen Dealer for further information on colours and upholstery combinations.

Standard Upholstery

Trendline



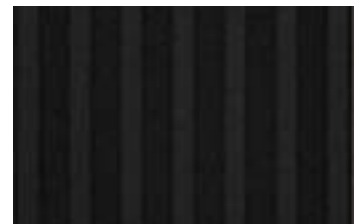
Anthracite Cloth

Comfortline



Anthracite Velour

Sportline

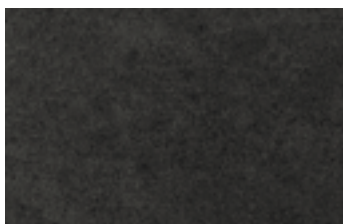


Anthracite Sports Cloth

Key

Latte Macchiato leather is not available with the following exterior paint colours: New River Blue Metallic and Sunset Red Metallic.

Optional Upholstery (Comfortline and Sportline only)



Anthracite Leather



Latte Macchiato Leather#

Owning a Volkswagen

Volkswagen New Vehicle Warranty

Every new Volkswagen passenger vehicle is covered by a 3-year/100,000km (whichever occurs first) manufacturer's warranty, which includes Volkswagen Assist (24hr roadside assistance). Every new Volkswagen passenger vehicle is also covered by a 3-year paintwork and 12 year anti-corrosion perforation warranty.

Volkswagen Assist – Premium

As a customer you can be assured that wherever you travel in Australia you will have access to roadside assistance 24 hours a day, 365 days a year. You will receive help in the event of a breakdown or accident and if required, your vehicle will be mobilised or transported to a Volkswagen authorised workshop. As a Volkswagen owner you will also have access to the additional benefits of accommodation and car rental if your vehicle cannot be mobilised within 24 hours when you are travelling away from home. Furthermore, you can enjoy the benefits of Volkswagen Assist's concierge service for Australia-wide travel booking.

Volkswagen Extended Warranty

Why not continue the confidence of a Volkswagen Warranty by purchasing Volkswagen Confidence Plus – an Insurance Policy designed to provide cover for the repair or replacement of a failed mechanical or electrical part, after the expiration of the Volkswagen standard new vehicle warranty. Volkswagen Confidence Plus is available for an additional period of 12 or 24 months unlimited kms. In addition, Volkswagen Confidence Plus includes the continuation of your Volkswagen Assist, our 24-hour roadside assistance program. You can purchase Volkswagen Confidence Plus at any time within your Volkswagen standard new vehicle warranty (3-year/100,000km). For more information contact your participating local dealer or visit volkswagen.com.au

Volkswagen Service

Your Authorised Volkswagen Service Centre is part of Volkswagen's global Quality Management System, ensuring all dealers are certified to ISO 9001:2000 – an internationally recognised Quality Standard. Authorised Volkswagen Service Centres have factory trained Technicians equipped with the very latest diagnostic equipment, specialist tooling and Volkswagen Genuine Parts. An Authorised Volkswagen Service Centre undertakes work in accordance to factory specified guidelines and maintenance schedules.

Volkswagen Genuine Parts®

Volkswagen Genuine Parts® are designed for your vehicle and approved by Volkswagen, with particular regard to safety. The workmanship, dimensional accuracy and materials used in these parts comply with factory specifications. To ensure safety and reliability, Volkswagen recommends the use of Volkswagen Genuine Parts®. Volkswagen Authorised Dealers offer a 2-year warranty on Genuine Parts from the date of purchase.

Volkswagen Finance

Buying, Borrowing or Leasing, Volkswagen Finance will certainly make you think differently about financing and insuring your new Volkswagen. Committed to meeting the needs of Volkswagen drivers, across Australia, we offer a range of leasing, financing and insurance products, each with distinct advantages depending on your specific circumstances. Our packages are personalised to suit your individual requirements. You design your plan so that it meets your budgeting needs and can rest assured that there will be no surprises along the way. Speak to your local participating Volkswagen Dealer today to put together a financial solution that best suits your lifestyle.

Glossary

Anti-lock Braking System (ABS)

When braking, wheel speed sensors measure the road wheel speed and should one or more wheels start to lock the ABS system reduces brake pressure to that wheel. This prevents the wheels from locking during heavy or emergency braking, enabling the vehicle to remain steerable.

Anti-Slip Regulation (ASR)

ASR improves driving and steering characteristics by preventing the front wheels from spinning under acceleration. When a difference in driving wheel speed is detected (i.e. when one wheel starts to spin due to differences in road surfaces, e.g. due to water or dirt) the system automatically reduces engine torque. ASR is a switchable traction control system.

Brake Assist

During emergency braking, Brake Assist aids the driver by increasing the brake pressure automatically to a level exceeding the locking limit. The ABS is thus quickly brought into the operating range, which enables maximum vehicle deceleration to be achieved.

Direct Shift Gearbox (DSG)

DSG is a manual gearbox in which the gearshifts are controlled electronically. What makes the DSG unique is that it has 2 separate gear sets operated by 2 wet multi-plate clutches. The benefit of 2 gear sets and 2 multi-plate wet clutches is that one gear set and clutch is engaged driving the vehicle with the second clutch having already pre-selected the next gear awaiting for power to be transferred. As the next gear has already been pre-selected prior to power being applied, the gear change only takes 3–4 100ths of a second. There is virtually no interruption to power, traction or acceleration. The DSG also offers Tiptronic gear selection and sports mode.

Electronic Brake-pressure Distribution (EBD)

Electronic, more sophisticated means of regulating the ratio of front/rear brake pressure. Settings are varied according to driving and load conditions to ensure each wheel is braked to the optimum extent.

Electronic Stabilisation Program (ESP)

ABS and ASR traction control systems are integrated into the Electronic Stabilisation Program (ESP). In short, ESP helps ensure that the vehicle goes where you steer it even in extreme driving conditions. The ESP system constantly compares the actual movement of the vehicle with pre-determined values and should a situation arise where the vehicle starts to skid, ESP will apply the brakes to individual wheels and automatically adjust the engine's power output to correct the problem. ESP prevents the vehicle from losing control when trying to avoid an accident, for example. It also prevents spinning off on a curve due to either understeer or oversteer.

Volkswagen is distributed by Volkswagen Group Australia Pty Ltd, The Lakes Business Park, 6 Lord St, Botany, NSW 2019. ABN 14 093 117 876. Specifications are as planned at February 2007, for model year 2007 and are subject to change without notice or obligation. Cars and accessories are shown for illustrative purposes only and may not depict Australian specifications. Fuel consumption figures according to Australian Design Rules (ADR) 81/01. All Volkswagen approved parts and accessories are warranted for 2 years/unlimited kilometres. All warranties implied by legislation or otherwise, are excluded to the maximum extent permitted by law. The liability of Volkswagen shall, subject to the law, be limited at Volkswagen's discretion: 1. In the case of the goods, the repair or the cost of repair, or the replacement or the cost of replacement; and 2. In the case of services, the re-supply of the services or the cost of re-supply of the services. All information in this brochure is correct at time of publication, however variations may occur from time to time and Volkswagen, in so far as it is permitted by law to do so, shall not be liable in any way as a result of any reliance by any person on anything contained in this brochure. The colours shown in the brochure are indicative only and may vary from actual items owing to the printing process. Authorised Volkswagen dealers will provide up-to-date information on model application, design feature, prices and availability on request.

Volkswagen Insurance & Volkswagen Extended Warranty are provided by Allianz Australia Insurance Limited (Allianz), AFS Licence No. 234708, ABN 15 000 122 580. In arranging this insurance Volkswagen Financial Services Australia Limited, ABN 20 097 071 460 & Volkswagen Group Australia Pty Ltd, ABN 14 093 117 896 and the authorised dealers act as agents of Allianz and not as your agent. Volkswagen Finance is a trading name of Volkswagen Financial Services Australia Limited. Locked Bag 5009, Alexandria NSW 2015. Tel: 02 9695 6311.



Aus Liebe zum Automobil

Volkswagen Golf

Publication: VGA3009G

Internet: www.volkswagen.com.au