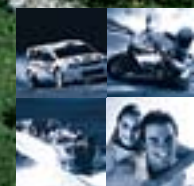




SX4



The four with more.

Today you have more compact cars than ever to choose from. Yet if you want more car for your money, you can't go past the Suzuki SX4. With more power, more space, more safety and more features than many of its competitors, it sets a whole new benchmark for the class. The agile sporty design is expressed in three dynamic forms - sedan, hatch and All-Wheel-Drive. All with the rally inspired performance Suzuki is renowned for. The SX4 is driven by a powerful 2.0 litre, 107kW engine. It boasts sophisticated safety levels, including ABS brakes with EBD and twin airbags, as standard. While the spacious interior is home to an abundance of features, including air conditioning, 8-speaker MP3 compatible CD stereo, steering wheel mounted audio controls and much, much more.





SX4 AWD



“WRC is the pinnacle of production car motorsport” - ‘Monster’ Tajima, Head of Suzuki Sport



SUZUKI HAS BUILT A REPUTATION FOR ENGINEERING INNOVATION. Whether it's high performance cars, motorcycles or marine engines, Suzuki is constantly evolving to meet our drivers' changing demands. We pride ourselves on building stylish, versatile vehicles that live up to the Suzuki stamp of quality, originality and reliability.



World Rally Championship Contender 2008

The SX4 has been created to lead Suzuki's new assault on the World Rally Championship. Engineered to handle the extreme conditions of world championship rallying, the SX4 delivers powerful driving dynamics across the entire range. Responsive handling, exterior strength and incredible versatility are essential to being a successful WRC contender. The SX4 boasts all this, with the ruggedness and reliability that come with Suzuki's already long and proud racing and rally heritage.



SX4 WRC

Taking the compact sedan to the next level.

Sophisticated and distinguished. Dynamic and imposing. The SX4 Sedan literally takes the small car class to a new level. Surpassing the low-stance styling of most conventional sedans, it stands taller on the road. The extra height creating a compelling road presence, more visibility and extra interior comfort. The SX4 Sedan's aggressive wedge shape and free flowing lines signal immediately that this is a real driver's car. The standard 2.0 litre, 16 valve, 107kW engine leaves the usual 1.6 and 1.8 litre sporty compacts more than lacking a little lustre. Also, at 515 litres the boot is one of the largest in its class, putting even more distance between the SX4 Sedan and the rest.



a whole new driving experience





SX4 SEDAN

Designed for driving. Created for comfort.

Everything about the Suzuki SX4 is designed around enhancing your driving experience. You have all you need at your fingertips, so you can fully enjoy your time behind the wheel. The illuminated central information display panel shows time, outside temperature, average and instantaneous fuel consumption. Steering wheel mounted audio controls let you easily adjust the in-dash 8-speaker CD with full MP3 function. Manual or auto transmission are within easy reach, as are the power windows, power mirrors and power doors. Safety also surrounds you with excellent visibility and wrap-around headlights for better night vision. On the road, ABS brakes with EBD (Electronic Brakeforce Distribution) adds to your driving confidence.





redefining the standard for
sporty compacts

SX4 HATCH

designed for the open minded

MORE SPACE TO PLAY WITH. The generous cabin area of the SX4 and tumble roll seats, provide you with the versatility and flexibility normally found in much larger cars. Allowing you to make intelligent choices of how you use the space. So whether you choose the hatch for a weekend getaway or the AWD model for a full-on 4x4 adventure, you'll find the SX4 is never short of room or attitude.

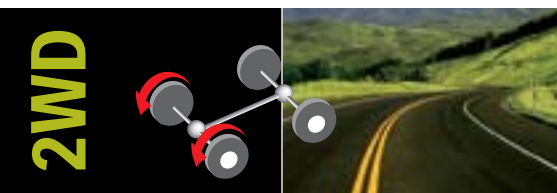




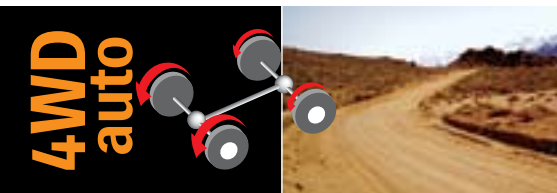
SX4 AWD

Switch to rally proven AWD performance.

Rally proven All-Wheel-Drive technology is at the heart of Suzuki's world renowned go-anywhere design intelligence. Engineered to create a super smooth ride whilst delivering dynamic performance, the SX4 AWD's sports heritage is apparent in its crisp, precise handling and comfortable, long-distance cruising. The signature feature of the SX4 AWD model is the i-AWD system (intelligent All-Wheel-Drive), a switchable three-mode 4X4 system that delivers all-wheel traction superior to that needed for everyday situations.



Only the front wheels provide the drive in this mode, which is the most economical setting. This mode is ideal for driving conditions on dry surfaces.



The standard mode for driving. Almost all the torque is distributed to the front wheels. Torque going to the rear is automatically increased or decreased to match traction requirements in variable conditions, such as when driving on slippery surfaces.




Lock mode provides ample torque to rear wheels from start-up for effective escapes in low traction conditions such as mud or snow. The system automatically switches over to, and remains in 4WD Auto at speeds over 60km/h.




sure-footed
all-wheel-drive





SX4 AWD 

 The crossover design continues inside with an ideal balance of bold and refined elements. The centre panel houses an in-dash audio system with 8 speaker surround sound, climate controlled air conditioning, and metallic accents - in a striking example of function meeting form.

- Sporty 2.0 litre performance
- Intelligent All-Wheel-Drive system
- 8-speaker, MP3 compatible CD
- Versatile roomy interior
- Front, Side, Curtain SRS Airbags
- ABS with BAS and EBD



Just listen to the throttle response. The 16-valve DOHC engine delivers full low-end torque and high-end sporty athleticism to really thrill the senses.

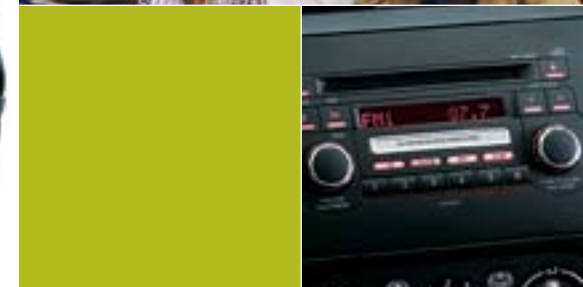




Performance hatch

MORE THAN A MATCH FOR THE CONVENTIONAL HATCH. Big on comfort and ingenuity, the SX4 Hatch has an exceptional array of standard features.

- 2.0 litre 107kW engine
- 8-speaker in-dash MP3 CD
- Steering wheel audio controls
- Air conditioning with particle filter
- 60/40 split-fold seats
- Multi-information display
- Power door locks, windows and mirrors
- Dual front SRS airbags
- ABS (Anti-lock Braking System) with BAS (Brake Assist System) and EBD (Electronic Brakeforce Distribution)



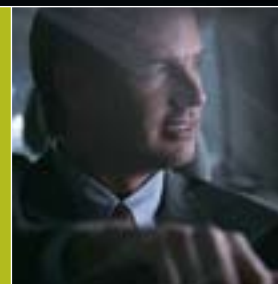


space and comfort

SMARTER DESIGN IS THE KEY TO EVERYTHING. It all starts with keyless entry and ignition. The impressive list of features just keeps on going.

- 2.0 litre 107kW engine
- Steering wheel mounted audio controls, 8-speaker in-dash MP3 CD
- Climate controlled air conditioning*
- Cruise control*
- 60/40 split-fold seats
- ABS with BAS and EBD
- Dual front SRS airbags

*Standard with SX4 S and SX4 AWD models



ACCESSORIES

	Description	Sedan	Hatch	AWD Hatch	Part Number
EXTERIOR					
Bonnet protector		▪	▪	▪	990AA-00318-001
Headlamp protectors		▪	▪	▪	990AA-00118-001
Reverse parking aid	Colour coded*	▪			990AA-75K00-XXX
Reverse parking aid	Colour coded*		▪		990AA-80J11-XXX
Reverse parking aid	Colour coded*			▪	990AA-80J00-XXX
Slimline weathershield	Front pair	▪	▪	▪	990AA-00218-002
Slimline weathershield	Rear pair		▪	▪	990AA-00218-003
Slimline weathershield	Rear pair	▪			990AA-00218-004
Muffler extension	Stainless Steel		▪	▪	990AA-01016-002
Fog light kit		▪			TBA
Fog light kit			▪	▪	99000-99019-88A
INTERIOR					
Ashtray		▪	▪	▪	99000-99012-83H
Cargo tray			▪	▪	990AA-00818-009
Cargo mat		▪			990AA-00818-007
Cargo net			▪	▪	99000-990J5-C20
Cruise control		▪	▪	▪	990AA-02118-001
Dashboard protection mat		▪	▪	▪	990AA-00918-006
Floor mat set	MT	▪	▪	▪	990AA-00818-004
Floor mat set	AT	▪	▪	▪	990AA-00818-005
First Aid Kit	Large	▪	▪	▪	990AA-02010-003
First Aid Kit	Small	▪	▪	▪	990AA-02010-006
Lighter	Cigar	▪	▪	▪	39400-59J10
Seat covers with side airbag	Front	▪	▪		990AA-01118-002
Seat covers (no side airbag)	Front	▪	▪	▪	990AA-01118-003
Seat covers	Rear		▪	▪	990AA-01118-005
Seat covers	Rear	▪			990AA-01118-006
TOWING					
Tow bar kit			▪	▪	990AA-01718-K02
Tow bar kit		▪			990AA-01718-K07

* These items are colour coded, please advise your car colour when ordering

	Description	Sedan	Hatch	AWD Hatch	Part Number
NAVIGATION					
Garmin Streetpilot C510		▪	▪	▪	990AA-01216-510
Garmin NUVI 310		▪	▪	▪	990AA-01216-310
Garmin QUEST		▪	▪	▪	990AA-01210-Q01
Garmin ZUMO 550		▪	▪	▪	990AA-01210-550
AUDIO / ENTERTAINMENT					
Premium sound upgrade kit***		▪	▪	▪	990AA-01218-PK2
CD stacker		▪	▪	▪	990AA-01218-010
Sub Woofer	120W	▪	▪	▪	990AA-01218-022
Speakers	1 pair	▪	▪	▪	990AA-01215-003
Speaker bracket (after market)	set of 4	▪	▪	▪	99000-99076-N50
Dash garnish, tuner, CTR	Alternative head unit	▪	▪	▪	73821-80J00-5PK
Bracket, audio	Alternative head unit	▪	▪	▪	99000-99082-80J
Pocket, tuner	1-Din alternative head unit	▪	▪	▪	39182-70E51
i-Pod interface	Standard head unit	▪	▪	▪	990AA-01216-125
ROOF RACK & ACCESSORIES					
Roof racks		▪			990AA-00718-003
Roof racks			▪		990AA-00718-005
Roof racks				▪	990AA-00718-010
Bike carrier fork mount		▪	▪	▪	990AA-00715-BC2
Locking arm	2 pair skis	▪	▪	▪	990AA-00715-LA2
Locking arm	3 pair skis	▪	▪	▪	990AA-00715-LA3
Locking arm	4 pair skis	▪	▪	▪	990AA-00715-LA4
Locking arm	6 pair skis	▪	▪	▪	990AA-00715-LA6
Ski clips	1 pair	▪	▪	▪	990AA-00715-SC1
Tie down attachments	2 pair	▪	▪	▪	990AA-00715-TDA
Tie down straps cam lock	1 pair	▪	▪	▪	990AA-00715-TDC
Tie down, ratchet	each	▪	▪	▪	990AA-00715-TDR
Carrier, water craft		▪	▪	▪	990AA-00715-WCC
Holder, water craft		▪	▪	▪	990AA-00715-WCU
Cam lock tie down	1 pair	▪	▪	▪	990AA-00715-RCT
Luggage tray	Small	▪	▪	▪	990AA-00715-LTC
Luggage box	320 ltr, LH open	▪	▪	▪	990AA-00716-320
Luggage box	360 ltr, LH open	▪	▪	▪	990AA-00716-360
Luggage box	450 ltr, LH open	▪	▪	▪	990AA-00716-450

*** Kit includes 4 x speakers, 4 x brackets and sub woofer



PREMIUM SOUND UPGRADE PACK



BONNET PROTECTOR



HEADLAMP PROTECTOR



FOG LIGHTS



CARGO NET



REVERSE PARKING KIT



FLOOR MATS



FRONT SEAT COVERS



REAR SEAT COVERS



ROOF RACKS



CHROME MUFFLER EXTENSION (HATCH ONLY)



TOW BAR



I-POD INTERFACE



SATELLITE NAVIGATION UNITS



6 CD STACKER KIT



SLIMLINE WEATHERSHIELDS



CRUISE CONTROL



LUGGAGE POD



CARGO TRAY (HATCH ONLY)



BIKE RACK

SPECIFICATIONS

SX4 SPECIFICATIONS

		Sedan	Sedan S	Hatch	Hatch S	AWD
TRANSMISSION						
		MT / AT	MT / AT	MT / AT	MT / AT	MT / AT
DIMENSIONS						
Overall length	mm	4,510		4,135		
Overall width	mm	1,730		1,730		1,755
Overall height	mm	1,545		1,585		1,630
Wheelbase	mm	2,500				
Tread	Front mm	1,500			1,495	
	Rear mm	1,495			1,495	
Ground clearance (unladen)	mm	165		175		200
Minimum turning radius	m	5.3				
CAPACITIES						
Seating capacity	persons	5				
Luggage capacity (litre)	max volume				1045	
	rear folded^	n/a			625	
	rear raised^	515		270		
Fuel tank capacity	litres	50		45		
ENGINE						
Type		J20A				
Number of cylinders		4				
Number of valves		16				
Piston displacement	cc	1,995				
Bore x stroke	mm	84.0 x 90.0				
Compression ratio		9.5 : 1				
Maximum output	kW / rpm	107 / 5,800				
Maximum torque	Nm / rpm	184 / 3,500				
Fuel distribution		Multipoint injection				
CHASSIS						
Steering		Rack & pinion				
Brakes	Front	Ventilated disc				
	Rear	Drum		Solid disc		
Suspension	Front	MacPherson strut & coil spring				
	Rear	Torsion beam & coil spring				
Tyres		195 / 65		205 / 60		
WEIGHTS						
Kerb weight (min)	kg	1,205 / 1,240	1,215 / 1,250	1,215 / 1,235	1,250 / 1,270	1,285 / 1,320
Gross vehicle weight	kg	1,675				1,725

^ Figures according to VDA

SX4 EQUIPMENT

		Sedan	Sedan S	Hatch	Hatch S	AWD
COMFORT						
Power steering		■	■	■	■	■
Power windows (front and rear)		■	■	■	■	■
Central door locking		■	■	■	■	■
Remote controlled door locks with hazard lamp answer-back function		■	■	■	■	■
Keyless start system			■		■	■
Air conditioning	Particle filter	■	■	■	■	■
	Climate control		■		■	■
Heater		■	■	■	■	■
Audio	Antenna	■	■	■	■	■
	Speakers	8	8	8	8	8
	In-dash CD stereo with MP3 function	■	■	■	■	■
	Steering wheel audio controls	■	■	■	■	■
Cruise control			■		■	■
INSTRUMENT PANEL						
Tachometer		■	■	■	■	■
Information display (clock, outside temperature, fuel consumption)		■	■	■	■	■
Steering wheel		urethane	leather	urethane	leather	leather
INTERIOR						
Courtesy lights		■	■	■	■	■
Sunvisors with vanity mirror (driver and passenger)		■	■	■	■	■
Day and night rear view mirror		■	■	■	■	■
Cup holders (front and rear)		■	■	■	■	■
Seats & door trims material		fabric	fabric	fabric	fabric	fabric
Driver's seat height adjuster		■	■	■	■	■
Seatback pockets (passenger's side)		■	■	■	■	■
Below seat storage (passenger's side)		■	■	■	■	■
Rear seats 60:40 split folding		■	■	■	■	■
Adjustable head restraints (front x 2, rear x 3)		■	■	■	■	■
12v accessory socket		■	■	■	■	■
Cargo area cover / rear parcel shelf				■	■	■
Front door storage pockets		■	■	■	■	■
Assist grips		■	■	■	■	■

SPECIFICATIONS

SX4 EQUIPMENT

	Sedan	Sedan S	Hatch	Hatch S	AWD
EXTERIOR					
Headlamps (halogen)	▪	▪	▪	▪	▪
Front fog lamps		▪		▪	▪
Electrically adjustable outside door mirrors	▪	▪	▪	▪	▪
2-speed variable intermittent windscreen wipers	▪	▪	▪	▪	▪
Rear window 1-speed intermittent washer & wiper			▪	▪	▪
Rear window demister	▪	▪	▪	▪	▪
Roof rails					▪
195 / 65 R15 + steel wheels	▪				
195 / 65 R15 + alloy wheels		▪			
205 / 60 R16 + steel wheels			▪		
205 / 60 R16 + alloy wheels				▪	▪
SAFETY AND SECURITY					
Dual front airbags	▪	▪	▪	▪	▪
Side airbags		▪		▪	▪
Curtain SRS airbags (front & rear)		▪		▪	▪
ABS with EBD (electronic brake distribution)	▪	▪	▪	▪	▪
BAS (brake-assist system)	▪	▪	▪	▪	▪
Front 3-point ELR seatbelts with height-adjusters & pre-tensioners	▪	▪	▪	▪	▪
Rear 3-point ELR seatbelts x 3	▪	▪	▪	▪	▪
ISO-FIX child seat restraint system	▪	▪	▪	▪	▪
Immobiliser	▪	▪	▪	▪	▪
High-mounted stop lamp	▪	▪	▪	▪	▪

COLOURS

SEDAN



White Pearl



Silky Silver*



Azure Grey*



Bluish Black*



Nocturne Blue*



Classy Red*

2WD HATCH



White Pearl



Silky Silver*



Blueish Black*



Ocean Blue*



Nocturne Blue*



Sunlight Copper*

AWD HATCH



White Pearl



Silky Silver*



Blueish Black*



Ocean Blue*



Nocturne Blue*



Sunlight Copper*

*Additional metallic paint charge.

There's a Suzuki for every way of life.



SX4

All care is taken to ensure the accuracy of this brochure at the time of publication approval. Specifications, features, prices and model availability may vary from State to State and may change without notice. Always consult your authorised Suzuki Dealer or refer to www.suzuki.com.au for the latest details on all models. SUZUKI AUSTRALIA will not be held liable for any loss as a result of reliance on the content of this brochure, whether in negligence or otherwise. Vehicles are shown for illustrative purposes only and may not depict exact Australian specifications. Published February 2008. SZA2823

www.suzuki.com.au

