



Das Auto.

## Volkswagen Golf





## The Golf philosophy.

You don't create one of the world's favourite cars by thinking like everyone else. And never has our approach of 'thinking differently' been more evident than in our Golf. The result is clear in the Golf's profound safety, convincing refinement and genuine value.

Overseas specification vehicles are shown in this brochure.  
Some features and options may not be available in Australia.





## Attention to detail.

Volkswagen's engineers have always understood that when it comes to **quality and innovation**, little things make a big difference. For example, the way the aerodynamic door mirrors feature extra indicator lights for greater safety.

The Volkswagen badge on the rear of the Golf is also the hatch release – a design feature that adds to its elegant lines. The Golf's celebrated strengths of stability, handling, and

extensive safety are reinforced with new improvements, and 120 metres of precision laser welding ensures it stays rigid, strong and quiet. Inside, intelligent use of space creates ample headroom and legroom for all.

Volkswagen's advanced manufacturing techniques using only the highest quality materials enable the Golf to offer a world leading **12 year anti-corrosion perforation warranty**.



## The Golf range – now with ESP as standard for all models.

The Golf range offers five unique model lines – **Edition, Pacific, GT Sport, GTI and R32** – with more focus on value and safety, and the choice of six engines – three petrol and three turbo diesel engines. While there's a model

to satisfy all requirements and preferences, every Golf benefits from increased safety standards, with **Electronic Stabilisation Program (ESP)** as standard throughout the range, and a reassuring **five star safety rating** awarded by



Euro NCAP. The very latest technology at your fingertips adds to the prestige feel of the Golf, and, of course, all are built to Volkswagen's strict standards. There's a Golf to suit everyone – you just need to decide which is best for you.





6

Satellite navigation system shown is an optional extra.

## Enhanced interior appointments

### Edition

Savour the silence or enjoy the embrace of your favourite tracks in the Golf's improved interior. Enhancements in technology, safety, ergonomics and luxury refinements mean the Golf's **superbly quiet** cabin is the perfect place to drive in peace or turn up the volume on the eight speaker, MP3-compatible CD sound system. Increased exterior stiffness and new insulation techniques combine with high quality finishes and a multi-function leather steering wheel to create an air of opulence. Added **safety** features include dual front, side and curtain airbags to protect you and your passengers, plus front seatbelt pre-tensioners with belt force limiters.

### Pacific and GT Sport

New **interior features** available include a multi-function trip computer, dual zone climate control air conditioning or illuminated vanity mirrors. **Ergonomics** have always been the Golf's strong suit and continue to evolve with important comfort features such as front seat height and lumbar adjustment, front and rear centre armrests, and front sports seats. The luxury feel of Golf's **interior design** includes the leather gear shift knob and handbrake lever and the choice of anthracite sports cloth upholstery, while the chillable glove box keeps drinks cool throughout summer.

- 01** The Golf is equipped with a radio/CD player with MP3 compatibility for a superb sound system.
- 02** A precise 6 speed manual transmission is standard on all models (except 1.6 Edition).
- 03** Safe and practical: all rear seat passengers are protected by a 3-point seat belt and head restraint, while the rear seat folds to provide a huge load space.
- 04** The easy-to-read instruments have a distinctive blue dash illumination.





## Safety.

Safety features have always been top priority during the Golf's development, and the new Golf range is now safer than ever. Even in extreme conditions, 'active' safety technologies such as **Electronic Stabilisation Program (ESP)**, **Anti-lock Braking System (ABS)** and **Electronic Brake-pressure Distribution (EBD)** with **Brake Assist** combine to keep you in control and help avoid an accident.

In the event of a collision, the Golf offers five star protection. With dual front, side and curtain airbags which are standard across the entire range, the Golf is the leader in its class for safety features. Front and rear crumple zones absorb the energy of an impact and divert the resulting forces around the passenger safety cell. Every occupant is protected by a three point seat belt and head restraint. The front seatbelts are height adjustable to ensure the best possible fit and built-in pre-tensioners with belt force limiters pull the seatbelt tight in a collision.





All of these safety features mean the Golf achieves the best possible **five star safety rating** in front and side impact testing conducted by Euro NCAP\*.

**Hill-start assist – available for vehicles equipped with DSG**

Hill-start assist holds the vehicle stationary for 1.5 seconds on hills with an incline greater than 5 degrees, when the foot brake is released by temporarily locking the brake pressure. This intelligent feature provides a comfortable hill start, which importantly avoids any rolling back.

- 01** The passenger safety cell is formed from steel panels with optimised strengths utilising the most advanced manufacturing techniques and materials.
- 02** The standard safety equipment offers driver and front passenger airbags, front side airbags for driver and passenger and curtain airbags, front and rear.
- 03** ABS prevents the wheels from locking during heavy braking, enabling the driver to maintain steering control and maximising braking efficiency. In the event of an accident, driver and passenger front, front side and full length curtain airbags contribute to the Golf's five star safety rating.



\*Award source: 2004 Volkswagen Golf awarded "5 stars" by independent European motor vehicle safety assessment organisation Euro NCAP (European New Car Assessment Programme) during Euro NCAP Spring testing, June 2004.



## Golf Edition.

The new Golf Edition offers unprecedented value and safety and sets new standards in equipment levels. The Golf's latest 'active' safety package includes the combined benefits of **Electronic Stabilisation Program (ESP)**, Anti-lock Braking System (ABS), Electronic Brake-pressure Distribution (EBD) with Brake Assist and dual front, side and curtain airbags, **all as standard**. The luxuriously improved interior boasts semi-automatic





air conditioning, eight speaker MP3-compatible CD sound system, multi-function trip computer, as well as a multi-function leather steering wheel. Comfort hasn't been overlooked either with height and lumbar adjustable front seats. The power door mirrors are heated to make demisting quick on cold winter mornings, while drivers will appreciate the power steering, front and rear power windows, plus remote central locking as standard.



- 01** The seats are uniquely upholstered in 'Edition' anthracite and grey cloth trim, while the centre console with armrest offers a convenient storage solution.
- 02** The Volkswagen badge doubles as the hatch release.





## 1.6 Edition.

The 1.6 Edition features the superbly engineered and economical 1.6 litre petrol engine. The engine's inspired design ensures you'll appreciate years of trouble-free motoring with its 75kW of power and 148Nm of torque. The 1.6 is paired with a 5-speed manual transmission delivering decisive gearshifts that enhance the powerplant's efficiency. A **6-speed automatic transmission** with Tiptronic function is also available as an option.

## 1.9 TDI Edition.

Volkswagen's **turbo diesel** (TDI) engines feature unique **Pumpe-Düse** technology – injecting precise amounts of fuel at exceedingly high pressure. The result is a cleaner burning engine with exceptional fuel economy, impressive torque and compelling performance. Smooth and silent, the 1.9 TDI boasts fuel consumption of just **5.5L/100km\*** (combined city/highway driving, 6-speed manual), making trips of 1,000kms possible on a single tank. From an environmental perspective, the clean burning 1.9 TDI meets the stringent EU4 emission level requirements.



Producing 77kW of power at 4,000 rpm and an outstanding 250Nm of torque at only 1,900 rpm, the 1.9 TDI can be teamed with either the effortless 6-speed manual or the optional 6-speed **Direct Shift Gearbox (DSG)** transmission.

\* This is combined city/highway driving as per Australian Standard ADR 81/01

- 01** The multi-function leather steering wheel and multi-function trip computer equip the Golf Edition with advanced technology and ergonomic design.
- 02** The Golf Edition is fitted with 15" Bristol alloy wheels.

## **Direct Shift Gearbox (DSG).**

DSG is a 6-speed gearbox with an electronically-controlled clutch and gearshift. The DSG technology uniquely pre-selects the next gear in advance, ready for the power to be switched, resulting in lightning fast gear changes in a mere 3-4/100ths of a second. This gives virtually uninterrupted power, traction and acceleration, and ensures maximum engine power for impressive fuel economy and driving pleasure.





## Golf Pacific.

The interior of the Golf Pacific delivers sumptuous luxury. The distinctive **anthracite sports cloth upholstery** and height and lumbar adjustable **front sports seats** immediately single out the Pacific as prestigious. The **dual zone climate control air conditioning** keep passengers at their perfect temperature, and an **automatic dimming rear view mirror** stops drivers being dazzled by the lights of cars behind. The **multi-function trip computer Plus** has a large format display for clarity and ease of use, while the innovative

**rain-sensing wipers** activate and adjust their speed depending on how heavy the rain is.

The headlights automatically turn on in low light and the 'coming home' function illuminates the area around the car at night when locking or unlocking. **Front fog lights** are another useful addition for low light driving conditions. Even the front footwells light up to make it easier to get in and out of your Golf in the dark.





Externally, the colour-matched bumpers and trim, along with its 'Pacific' tailgate badge, finish your car beautifully.

The Pacific features **cruise control** conveniently located on the indicator stalk to make it easy to keep a steady speed on extended freeway drives. There's also a handy fold-down load-through section in the rear seat which is ideal for a set of skis. Front and rear reading lights are standard as well as illuminated vanity mirrors for the driver and front passenger.

- 01** The Golf Pacific is fitted with 16" Mugello alloy wheels.
- 02** Dual zone climate control air conditioning is standard on the Golf Pacific and GT Sport.
- 03** Cruise Control is standard on the Golf Pacific, GT Sport, GTI and R32.



## 2.0 FSI Pacific.

FSI is Volkswagen's innovative **direct petrol injection** technology. The FSI engine injects fuel into the cylinders in acutely precise amounts, reducing petrol consumption while increasing performance. The 2.0 FSI engine produces 110kW of power at 6,000 rpm and 200Nm of torque at 3,500 rpm. You can combine it with the smooth 6-speed manual transmission or the optional automatic 6-speed Tiptronic transmission with **Dynamic Selection Program (DSP)**.

## 2.0 TDI Pacific.

The 2.0 TDI engine combines Volkswagen's acclaimed **Pumpe-Düse** design with multi-valve technology to deliver torque that can compete with many V6 petrol engines. With 103kW of power at 4,000 rpm and an enormous **320Nm of torque** from as low as 1,750 rpm, the 2.0 TDI engine delivers an exhilarating and satisfying drive.



The 2.0 TDI's ingenious design offers rapid acceleration with low fuel consumption of just **5.7L/100km\*** (combined city/highway driving, 6-speed manual). The 2.0 TDI can be teamed to either the precise 6-speed manual or the optional **6-speed DSG transmission**.

\* This is combined city/highway driving as per Australian Standard ADR 81/01.

- 01** Front sports seats with height and lumbar adjustment provide ergonomic support, and comfort with sports-inspired aesthetics.
- 02** An automatic dimming rear view mirror, rain sensing windscreen wipers and a coming/leaving home function with automatic headlights are standard on the Golf Pacific, GT Sport, GTI and R32.





## Golf GT Sport.

Created for the performance driver, the GT Sport delivers exactly what you'd expect from a true sports performer. The sleek interior hints at the promise of what's in store, combining comfort and control. The front sports seats with lumbar and height adjustment in expressive anthracite red upholstery give solid support when tackling tight corners, while the 'Black Onyx' trim inserts heighten the sports appeal. The three-spoke leather-trimmed steering wheel with gearshift paddles for DSG equipped models, and the multi-function dashboard display, together with a boost pressure dial (TSI only), deliver vital information at a glance. This is a car that excites with both performance and looks.

## 1.4 TSI GT Sport.

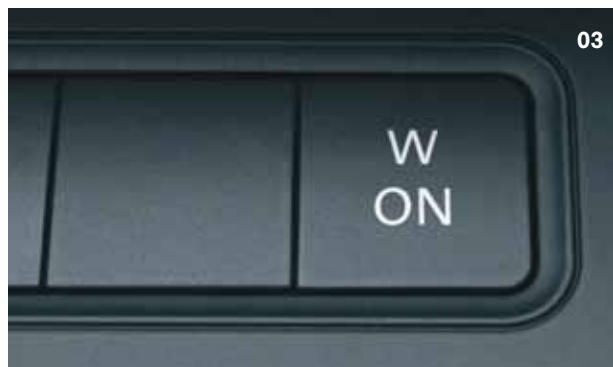
Volkswagen has pushed technology to a new precedent, developing the world's first ever twin charged direct injection petrol engine. Hitting 100km/h in just 7.7 seconds with the DSG transmission, and high torque delivering maximum power at both low revs and high speeds, the result is phenomenal. An engine that combines power and economy. What's more, you can drive all day – because if there's one thing the TSI engine hates, it's petrol stations. With an impressive combined fuel consumption figure of just 7.7 litres per 100km\*, it's an economical powerhouse.

\* This is combined city/highway driving as per Australian Standard ADR 81/01.



## 2.0 TDI GT Sport.

If you want economy with added performance, the powerful new 2.0 litre Turbo Diesel Injection (TDI) teamed with either a six speed manual gearbox or the DSG automatic is certain to excite. The TDI GT Sport produces 125kW of power at 4200 rpm and an impressive 350Nm of torque from as little as 1750 rpm. This efficiency comes from the direct injection 'Pumpe Düse' technology that injects diesel in precise amounts at high pressure. It not only means inspiring performance but also low fuel consumption. The 2.0 litre 125kW TDI engine is equipped with a Diesel Particulate Filter, producing cleaner emissions.



- 01** The twin-charged engine comprising a mechanically-driven supercharger and exhaust-driven turbocharger, which work in tandem to eliminate turbo lag enabling the TSI engine to achieve maximum torque at both low revs and high speed.
- 02** The three-spoke multi-function leather steering wheel is ergonomically designed for comfort and is aesthetically pleasing.
- 03** The Winter Driving Program adapts driving optimally to weather and road conditions. When the switch is activated, torque is reduced when driving off to prevent wheel spin.
- 04** The badge on the front grille places the GT Sport in distinguished company and identifies the new Golf GT Sport as a true sports performer.





## Golf GTI. The badge says it all.

As soon as you set your eyes on the Golf GTI, you'll feel a stirring within. Could it be the wide track, lowered sports suspension and 17" 'Denver' alloy wheels that have set your pulse racing? Maybe the rear roof spoiler and GTI

styling with its deep front spoiler, or the unique black grille with honeycombe front air intakes? Step back, take a deep breath, your journey is about to begin.



## The excitement builds as you step inside.

Interior specification is everything if you're driving a GTI, and here the new generation Golf GTI will not disappoint. Settle into the deep front sports seats with height and lumbar adjustment, hold onto the race-inspired leather sports steering wheel and feel the excitement begin to build. The specially designed aluminium gear knob and racing pedals make it unmistakably clear you're sitting

in a GTI, while the quality of the standard 'Interlagos' cloth, or optional leather upholstery, and brushed aluminium instrument surrounds reinforce the feeling that this is no ordinary car.





## Golf R32. Pure energy.

The motorsport inspired R32 will get your heart beating as no other car can. This phenomenal vehicle delivers dynamic handling, class-leading performance and driving enjoyment.

As soon as you set eyes on its chrome radiator grille with matte chrome surround, front lower air intakes, 20mm lowered sports suspension, twin exhausts and 18 inch 'Omanyt' alloy wheels, the adrenalin buzz will begin.



When you enter the Golf R32, you'll discover **dual zone climate control air conditioning** with dust and pollen filter, a **ten-speaker Volkswagen sound package** with MP3 compatible six disc CD changer, and rain sensing windscreen wipers. Attention to detail is highlighted via **aluminum trim**, unique 'engine spin' decorative inserts

in the dashboard, centre console and doors as well as silver instrument dial surrounds. Front sport seats in 'Vienna' leather and the R32 logo embossed on the head restraints express distinctive interior design. The Golf R32 is available as a three or five door.





- 01** Golf Pacific and GT Sport models offer an optional leather upholstery package with heated front sports seats and electric lumbar adjustment.
- 02** The Golf GTI offers optional premium leather sports seats with height and electric lumbar adjustment.
- 03** The Golf R32 offers optional Recaro bucket front seats with embossed 'R' logo in the head rest. These seats provide optimal lateral support during fast cornering.
- 04** The optional RNS510 satellite navigation system guides you to your destination and also delivers perfect sound quality.
- 05** A headlight cleaning system and automatic self levelling function are included with the optional bi-xenon headlights available on GT Sport and GTI.
- 06** Optional rear parking sensors are an innovative safety feature available across the Golf range.
- 07** The optional electric glass sunroof is slide and tilt adjustable with sunblind and is available across the Golf range.



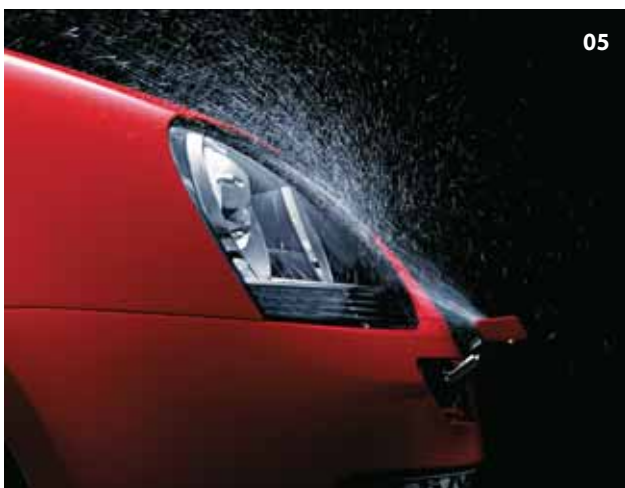


## Optional equipment.

The Golf offers an impressive list of options to add a personal touch to your new car. For Pacific and GT Sport, the optional **leather upholstery package with electric lumbar adjustment** is available. For the GTI, leather upholstered and **front heated ergonomically designed sports seats with electric lumbar adjustment** are available. For the R32, heated and height adjustable Recaro bucket front seats in Vienna leather with the 'R' logo embossed in the head restraint area are available.

Invite your surroundings inside by opting for a slide and tilt adjustable **electric glass sunroof**, complete with sunblind. The **RNS510 satellite navigation system** with high resolution touch screen to display 3D maps, plus audio and video playback would keep you on track while enjoying flawless sound quality.

You can partner your Golf with an automatic **6 speed Tiptronic with Dynamic Selection Program (DSP)** transmission for 1.6 and 2.0 FSI petrol models or an automatic **6 speed Direct Shift Gearbox (DSG)** for TSI, TDI, GTI and R32 models. All models can also be equipped with optional and innovative **rear parking sensors** for that much needed extra pair of eyes at the rear.





## Volkswagen Genuine Accessories.

Movement fascinates. In fact, there are few subjects that excite people more, that's because movement is synonymous with freedom. Our comprehensive range of genuine accessories give you the freedom to customise the look and feel of your vehicle to reflect your own personality and individual sense of style.

The product philosophy is simple – to deliver innovative technologies and premium design – right down to the finest detail. Each and every genuine accessory has been designed specifically with the Golf in mind and has been engineered and rigorously tested to ensure that it meets the same high standards of quality as the vehicle itself.

No matter what you choose you can have peace of mind knowing that any genuine accessory fitted by your local Volkswagen Dealer, at the time of your vehicle purchase will be covered by the same warranty as the vehicle itself.

For more information or to experience the full range of genuine accessories designed to suit the Golf, visit your local Volkswagen Dealer.



Bicycle Holder and Roof Bar Set



Carpet Floor Mats



Front and Rear Mud Flaps



Ski and Snowboard Holder



Rubber Floor Mats



Parcel Tray Storage Shelf



Ski and Luggage Box



Plastic Boot Tub



Tow Bar



Body Kit, Front



Body Key, Rear



Bluetooth Phone Kit



Stainless Steel Pedal Set



iPod Adaptor



Rear Parking Sensors



Satellite Navigation System



16" Namib Alloy Wheel



16" Contour Alloy Wheel



17" Exis Alloy Wheel



18" Karthoum Alloy Wheel



18" Vision Alloy Wheel

# Specifications

	1.6 Edition	1.9 TDI Edition	2.0 FSI Pacific	2.0 TDI Pacific	GT Sport TSI	GT Sport TDI	GTI	R32
<b>Safety and Security</b>								
<b>Airbags</b>								
Driver and front passenger airbags	S	S	S	S	S	S	S	S
Driver and front passenger side airbags	S	S	S	S	S	S	S	S
Curtain airbags, front and rear	S	S	S	S	S	S	S	S
<b>Anti-theft</b>								
Electronic engine immobiliser	S	S	S	S	S	S	S	S
Alarm system with interior monitoring and tilt sensor	-	-	-	-	O	O	S	S
<b>Body</b>								
Fully galvanised body with 12 year anti-corrosion perforation warranty	S	S	S	S	S	S	S	S
Door side impact protection	S	S	S	S	S	S	S	S
Rigid safety cell with front and rear crumple zones	S	S	S	S	S	S	S	S
<b>Brakes</b>								
Anti-lock Braking System (ABS)	S	S	S	S	S	S	S	S
Brake Assist	S	S	S	S	S	S	S	S
Electronic Brake-pressure Distribution (EBD)	S	S	S	S	S	S	S	S
Hazard light warning system triggered in emergency braking situation	S	S	S	S	S	S	S	S
Hill Start Assist (HSA) (with DSG)	-	S	-	S	S	S	S	S
Red brake callipers	-	-	-	-	-	-	S	-
Blue brake callipers	-	-	-	-	-	-	-	S
<b>Child restraint</b>								
Child seat anchor points mounted on back of rear seat (3)	S	S	S	S	S	S	S	S
<b>Fog lights</b>								
Front fog lights, mounted in lower bumper	O	O	S	S	S	S	S	-
Rear fog lamp	S	S	S	S	S	S	S	S
<b>Head restraints</b>								
Front safety optimised head restraints, height adjustable	S	S	S	S	S	S	S	S
Rear head restraints height adjustable and removable (3)	S	S	S	S	S	S	S	S
<b>Locking</b>								
Remote central locking with deadlock mechanism	S	S	S	S	S	S	S	S
2 stage unlocking (programmable)	S	S	S	S	S	S	S	S
Automatic locking after takeoff (programmable)	S	S	S	S	S	S	S	S
One touch lock/unlock for driver	S	S	S	S	S	S	S	S
Child safety locks on rear doors	S	S	S	S	S	S	S	S
<b>Luggage cover, removable</b>								
Luggage cover, removable	S	S	S	S	S	S	S	S
<b>Seat belts</b>								
Front height adjustable with pre-tensioners and belt force limiters	S	S	S	S	S	S	S	S
3 point seat belts for all passengers	S	S	S	S	S	S	S	S
<b>Traction Control</b>								
Anti-Slip Regulation (ASR)	S	S	S	S	S	S	S	S
Electronic Stabilisation Program (ESP)	S	S	S	S	S	S	S	S
Winter Driving Program	-	-	-	-	S	S	-	-
4MOTION all wheel drive	-	-	-	-	-	-	-	S
<b>Exterior Equipment/Styling</b>								
<b>Body enhancements</b>								
Body coloured bumper bars, door handles, protective body side mouldings and outer rear view mirrors	S	S	S	S	S	S	S	S
Front lower air intake with black grille inserts and radiator grille surround in charcoal colour	-	-	-	-	S	S	-	-
Front lower air intake and radiator grille with black honeycomb inserts, surround in high gloss black finish with red outline	-	-	-	-	-	-	S	-
Front lower air intake with black grille inserts, chrome radiator grille highlights and radiator grille surround in matte chrome	-	-	-	-	-	-	-	S
Rear roof spoiler	-	-	-	-	-	-	S	S
Widened side sill panels (R32 body colour)	-	-	-	-	-	-	S	S
Unique rear bumper with exposed dual exhaust tail pipes	-	-	-	-	S	S	S	-
Unique rear bumper with centrally mounted dual chrome exhaust tail pipes	-	-	-	-	-	-	-	S
Sports body kit	A	A	A	A	A	A	A	-



# Specifications continued

	1.6 Edition	1.9 TDI Edition	2.0 FSI Pacific	2.0 TDI Pacific	GT Sport TSI	GT Sport TDI	GTI	R32
<b>Exterior Equipment/Styling (continued)</b>								
<b>Protection</b>								
Bonnet protector	A	A	A	A	A	A	A	A
Headlight protectors	A	A	A	A	A	A	A	-
Loading sill protection, clear or stainless-steel	A	A	A	A	A	A	A	A
Mudflaps, front and rear	A	A	A	A	A	A	A	-
Slimline weather shields (5 door only)	A	A	A	A	A	A	A	A
<b>Roof</b>								
Bicycle, kayak, ski, surfboard and snowboard holders	A	A	A	A	A	A	A	A
Luggage rack	A	A	A	A	A	A	A	A
Roof bars	A	A	A	A	A	A	A	A
Ski and luggage box	A	A	A	A	A	A	A	A
<b>Tinted Glass</b>								
Darkened rear tail light clusters	-	-	-	-	-	-	-	S
Heat insulating tinted glass	S	S	S	S	S	S	S	S
<b>Towbar</b>								
Towbar with 7-pin flat trailer connector and removable tongue	A	A	A	A	A	A	A	-
<b>Wheels</b>								
Alloy wheels (Bristol) 15 x 6½" with 195/65 R15 tyres	S	S	-	-	-	-	-	-
Alloy Wheels (Contour) 16 x 7"	A	A	A	A	-	-	-	-
Alloy Wheels (Namib) 16 x 7"	A	A	A	A	-	-	-	-
Alloy Wheels (Tangis) 16 x 7"	A	A	A	A	-	-	-	-
Alloy wheels (Mugello) 16 x 6½" with 205/55 R16 tyres	-	-	S	S	-	-	-	-
Alloy wheels (Classixs) 17 x 7" with 225/45 R17 tyres	-	-	-	-	S	S	-	-
Alloy wheels (Denver) 17 x 7½" with 225/45 R17 tyres	-	-	-	-	-	-	S	-
Alloy Wheels (Activa) 17 x 7"	A	A	A	A	A	A	A	-
Alloy Wheels (Exis STP) 17 x 7½"	A	A	A	A	A	A	A	-
Alloy Wheels (Vision) 17 X 7"	A	A	A	A	A	A	A	-
Alloy wheels (Omanyt) 18 x 7½" with 225/40 R18 tyres	-	-	-	-	-	-	-	S
Alloy Wheels (Karthoum) 18 x 8"	A	A	A	A	A	A	A	A
Alloy Wheels (Vision) 18 x 8"	A	A	A	A	A	A	A	A
Anti-theft wheel bolts	S	S	S	S	S	S	S	S
Low tyre pressure indicator	-	-	-	-	-	-	S	S
Weight and space saving spare wheel	S	S	S	S	S	S	S	S
<b>Comfort and Convenience</b>								
<b>Armrest</b>								
Front centre armrest with storage box, rear air outlets (2) and rear cup holders (2)	S	S	S	S	S	S	S	S
Rear seat centre armrest with load through provision	-	-	S	S	S	S	S	S
<b>Air conditioning</b>								
Semi-automatic	S	S	-	-	-	-	-	-
Dual zone automatic climate control	-	-	S	S	S	S	S	S
Dust and pollen filter	S	S	S	S	S	S	S	S
<b>Cruise control</b>								
Cruise control	A	A	S	S	S	S	S	S
<b>Cup holders</b>								
Front (2), with bottle opener	S	S	S	S	S	S	S	S
Rear (2)	S	S	S	S	S	S	S	S
One litre bottle holders in front door pockets	S	S	S	S	S	S	S	S
<b>Entry/warning reflectors in front and rear doors</b>								
Entry/warning reflectors in front and rear doors	S	S	S	S	S	S	S	S
<b>Floor mats</b>								
Front and rear, carpet	A	A	A	A	A	A	S	S
Front and rear, rubber	A	A	A	A	A	A	A	A
<b>Fuel filler flap</b>								
Electrically operated via switch on drivers door	S	S	S	S	S	S	S	S
<b>Grab handles</b>								
Soft fold away grab handles, front and rear	S	S	S	S	S	S	S	S
<b>Headlights</b>								
Bi-Xenon headlights for high/low beams with clear lightweight polycarbonate lenses, automatic self levelling and headlight cleaning system	-	-	-	-	O	O	O	S
Halogen twin headlights with clear polycarbonate lens	S	S	S	S	S	S	S	S
Headlight-on warning buzzer	S	S	S	S	S	S	S	S
Internal headlight range adjustment	S	S	S	S	S	S	S	-
Low light sensor with automatic headlight function	-	-	S	S	S	S	S	S
Coming / leaving home function	-	-	S	S	S	S	S	S
Combined headlight and fog light switch	S	S	S	S	S	S	S	S

# Specifications continued

	1.6 Edition	1.9 TDI Edition	2.0 FSI Pacific	2.0 TDI Pacific	GT Sport TSI	GT Sport TDI	GTI	R32
<b>Comfort and Convenience</b>								
<b>In Car Entertainment</b>								
AM/FM stereo with security coding	S	S	S	S	S	S	S	S
Audio functions mounted on steering wheel	S	S	S	S	S	S	S	S
Auxiliary input audio socket in front centre armrest	-	-	-	-	-	-	S	S
Bluetooth® integrated hands free phone kit	A	A	A	A	A	A	A	A
CD player with MP3 compatibility	S	S	S	S	S	S	-	-
iPod® adaptor (replaces aux. input socket function & not avail. with optional CD changer)	A	A	A	A	A	A	A	A
Speakers, front and rear (8)	S	S	S	S	S	S	-	-
Volkswagen sound package – 8 channel 250W amplifier with speakers, front and rear (10)	-	-	-	-	-	-	S	S
6 disc CD changer with MP3 compatibility, in dash	-	-	-	-	-	-	S	S
<b>Instrumentation</b>								
Speedometer & tachometer, electronic odometer and tripmeter, service interval display, digital clock, fuel gauge, low fuel warning light, brake pad wear indicator, blue adjustable illumination (R32 white/blue illumination)	S	S	S	S	S	S	S	S
Coolant temperature gauge	S	S	S	S	-	S	S	S
Boost pressure gauge and coolant temperature warning light	-	-	-	-	S	-	-	-
<b>Interior highlights</b>								
Matt chrome inserts in dashboard and doors	S	S	-	-	-	-	-	-
Titanium inserts in dashboard and doors	-	-	S	S	-	-	-	-
'Black Onyx' inserts in dashboard and doors	-	-	-	-	S	S	-	-
Brushed aluminium inserts in dashboard and doors	-	-	-	-	-	-	S	-
'Engine Spin' aluminium inserts in dashboard, centre console and doors	-	-	-	-	-	-	-	S
Aluminium pedals (R32 with 'R' flags)	-	-	-	-	-	-	S	S
Chrome trim on instrument cluster and gearshift lever surround	S	S	S	S	S	S	S	S
Door sill scuff plates with stainless-steel insert	A	A	A	A	A	A	A	A
Gearshift knob in leather	S	S	S	S	S	S	-	-
Gearshift knob in aluminium & leather	-	-	-	-	-	-	S	S
Gearshift knob in aluminium, carbon or walnut	A	A	A	A	-	-	-	-
Gearshift gaiter and handbrake grip in leather	S	S	S	S	S	S	S	S
Stainless-steel sports pedal set	A	A	A	A	A	A	-	-
<b>Interior lighting</b>								
With time delay	S	S	S	S	S	S	S	S
Foot well illumination, driver and front passenger	-	-	S	S	S	S	S	S
Front reading lights (2)	S	S	S	S	S	S	S	S
Rear passenger reading lights (2)	-	-	S	S	S	S	S	S
<b>Luggage compartment</b>								
Chrome plated load restraining hooks	S	S	S	S	S	S	S	S
Luggage compartment light	S	S	S	S	S	S	S	S
Luggage compartment protection, moulded foam, moulded plastic, plastic tub	A	A	A	A	A	A	A	A
Luggage net	A	A	A	A	A	A	A	A
Parcel shelf storage tray	A	A	A	A	A	A	A	A
Shopping bag hooks	-	-	S	S	S	S	S	S
Storage box in side lining	-	-	S	S	S	S	S	S
12 volt socket	-	-	S	S	S	S	S	S
<b>Mirrors</b>								
Automatic dimming interior rear-view mirror	-	-	S	S	S	S	S	S
Electrically heated and adjustable exterior mirrors	S	S	S	S	S	S	S	S
LED turn indicators integrated in exterior mirrors	S	S	S	S	S	S	S	S
<b>Paint</b>								
Metallic or Pearl Effect paint finish	O	O	O	O	O	O	O	S
<b>Power steering</b>								
Electro-mechanical, vehicle speed and steering input sensitive	S	S	S	S	S	S	S	S
<b>Seating</b>								
Comfort front seats	S	S	-	-	-	-	-	-
Sports front seats	-	-	S	S	S	S	-	-
Front Top sports seats with additional side bolstering (with GTI or R32 insignia)	-	-	-	-	-	-	S	S
Easy entry front seat backrest release function (3 Door)	-	-	-	-	-	-	S	S
Height adjustment for front seats	S	S	S	S	S	S	S	S
Lumbar adjustment for front seats	S	S	S	S	S	S	S	-
Electric lumbar adjustment for front seats	-	-	-	-	-	-	-	S
Individually heated front seats	-	-	-	-	-	-	-	S
Split folding rear seat backrest (60/40)	S	S	S	S	S	S	S	S

## Specifications continued

	1.6 Edition	1.9 TDI Edition	2.0 FSI Pacific	2.0 TDI Pacific	GT Sport TSI	GT Sport TDI	GTI	R32
<b>Comfort and Convenience (continued)</b>								
<b>Steering wheel</b>								
3 spoke leather rimmed steering wheel	S	S	S	S	S	S	-	-
3 spoke leather rimmed flat bottomed sports steering wheel with aluminium inserts	-	-	-	-	-	-	S	S
Audio and Multi-function Display controls	S	S	S	S	S	S	S	S
Gear shift paddles (DSG)	-	A	-	A	S	S	S	S
Height and reach adjustable steering wheel	S	S	S	S	S	S	S	S
<b>Storage</b>								
Central compartment on the dash panel	S	S	-	-	-	-	-	-
Chillable glove box with illumination	S	S	S	S	S	S	S	S
Centre console storage compartment (without CD changer)	S	S	S	S	S	S	S	S
Coin tray and 12 volt socket in console	S	S	S	S	S	S	S	S
Front seat backrest storage pockets	-	-	S	S	S	S	S	S
Front door pockets with one litre bottle holders	S	S	S	S	S	S	S	S
Sunglass compartment in roof console	-	-	S	S	S	S	S	S
<b>Trip Computer</b>								
Multi-Function Display – trip time, trip length, average speed, average and current fuel consumption, distance till empty & outside temperature	S	S	S	S	S	S	S	S
Large format 'MFD Plus' display with audio and convenience menus	-	-	S	S	S	S	S	S
<b>Upholstery</b>								
Cloth seats	S	S	-	-	-	-	-	-
Sports cloth seats	-	-	S	S	S	S	-	-
'Interlagos' GTI sports cloth seats	-	-	-	-	-	-	S	-
Vienna leather	-	-	O	O	O	O	O	S
<b>Vanity mirrors</b>								
Driver's and passenger's side vanity mirrors	S	S	S	S	S	S	S	S
Illuminated on driver's and passenger's side	-	-	S	S	S	S	S	S
<b>Wipers</b>								
2 speed aero wipers with wash/wipe and vehicle speed sensitive intermittent wipe	S	S	S	S	S	S	S	S
Rain sensor	-	-	S	S	S	S	S	S
Rear window with wash/wipe and intermittent wipe	S	S	S	S	S	S	S	S
<b>Windows</b>								
Power front / rear (5 Door), with roll-back function, driver with one-touch up-down	S	S	S	S	S	S	S	S
Remote operated convenience close and open feature	S	S	S	S	S	S	S	S
Sunblind for rear window	A	A	A	A	A	A	A	A
Sunblind for rear side window	A	A	A	A	A	A	A	A
<b>12V socket</b>								
Centre console	S	S	S	S	S	S	S	S
Luggage compartment	-	-	S	S	S	S	S	S
<b>Optional Equipment</b>								
Anti-theft alarm system with interior monitoring and tilt sensor	-	-	-	-	O	O	S	S
<b>Automatic Transmission</b>								
6 speed with Dynamic Selection Program (DSP), sport mode and Tiptronic function	O	-	O	-	-	-	-	-
6 speed Direct Shift Gearbox (DSG) with sport mode and Tiptronic function	-	O	-	O	O	O	O	O
Bi-Xenon headlights with automatic self levelling and headlight cleaning system	-	-	-	-	O	O	O	S
Front fog lights, mounted in lower bumper	O	O	S	S	S	S	S	-
Metallic/Pearl Effect paint	O	O	O	O	O	O	O	S
<b>Parking distance sensors</b>								
Rear parking distance sensors with audible warning	O	O	O	O	O	O	O	O
Automatic kerb function when reversing, passenger's side exterior mirror	O	O	O	O	O	O	O	O
<b>Satellite navigation system (RNS510)</b>								
High-resolution touch screen display in 16:9 format, 3D map views, integrated 30 GB hard drive and SD card slot, DVD drive for the playback of audio CD/MP3 and video DVD and 10 speakers	O	O	O	O	O	O	O	O
Large format Multi-Function Display (MFD Plus) with satellite navigation, audio and convenience menus	O	O	O	O	O	O	O	O
Auxiliary input audio socket in front centre armrest	O	O	O	O	O	O	O	O



## Specifications continued

	1.6 Edition	1.9 TDI Edition	2.0 FSI Pacific	2.0 TDI Pacific	GT Sport TSI	GT Sport TDI	GTI	R32
<b>Optional Equipment (continued)</b>								
<b>Seats</b>								
Electrically operated driver's seat with under seat storage drawer#	-	-	-	-	-	-	-	○
Vienna leather upholstery with individually heated front sports seats (GTI Top sports) and electric lumbar adjustment	-	-	○	○	○	○	○	○
Recaro front seats in Vienna leather with embossed 'R' logo, heating and height adjustment*	-	-	-	-	-	-	-	○
#The electrically operated driver's seat is not available with 3 Door models or in conjunction with the Recaro front seats.								
*The Recaro front seats are not equipped with front side airbags, lumbar adjustment or seat back pockets.								
<b>Sunroof</b>								
Electric glass sunroof, slide and tilt adjustable with sunblind	○	○	○	○	○	○	○	○
Illuminated vanity mirrors and rear passenger reading lights								
6 disc CD changer mounted in centre console ^	○	○	○	○	○	○	○	○
^Available only in conjunction with Satellite Navigation. This CD changer is not MP3 compatible.								

## Technical Specifications – Edition, Pacific & GT Sport.

Engine	1.6 litre	2.0 litre FSI	1.4 litre TSI	1.9 litre TDI	2.0 litre TDI (103kw)	2.0 litre TDI (125kw)
Type	4 cyl inline petrol	4 cyl inline petrol	4 cyl inline Twin-charger petrol	4 cyl inline turbo diesel	4 cyl inline turbo diesel	4 cyl inline turbo diesel
Installation	Front transverse	Front transverse	Front transverse	Front transverse	Front transverse	Front transverse
Cubic capacity, litres/cc	1.6 / 1595	2.0 / 1984	1.4 / 1390	1.9 / 1896	2.0 / 1968	2.0 / 1968
Bore/stroke, mm	81.0 / 77.4	82.5 / 92.8	76.5 / 75.6	79.5 / 95.5	81.0 / 95.5	81.0 / 95.5
Max power, kW @ rpm	75 @ 5600	110 @ 6000	125 @ 6000	77 @ 4000	103 @ 4000	125 @ 4200
Max torque, Nm @ rpm	148 @ 3800	200 @ 3500	240 @ 1750 – 4500	250 @ 1900	320 @ 1750 - 2500	350 @ 1750 - 2500
Compression ratio	10.5:1	11.5:1	10.0:1	19.0:1	18:1	18.5:1
Fuel system	Simos 7.1 multi-point injection system	Bosch Motronic MED 9.5 FSI direct injection system	Bosch Motronic MED 9.5.10 FSI direct injection system	Bosch EDC 16 with unit injectors (Pumpe Düse)	Bosch EDC 16 with unit injectors (Pumpe Düse)	Bosch EDC 16 with unit injectors (Pumpe Düse)
Ignition system	Electronic	Electronic	Electronic	Compression	Compression	Compression
Exhaust emission control	Exhaust gas recirculation, catalytic converter, lambda probes	Exhaust gas recirculation, NOx storage-type catalytic converter, two precatalytic converters and lambda probes	Exhaust gas recirculation, catalytic converter and lambda probes	Exhaust gas recirculation and oxidising catalytic converter	Exhaust gas recirculation and oxidising catalytic converter	Exhaust gas recirculation with oxidising catalytic converter and diesel particulate filter
Emission level	EU IV	EU IV	EU IV	EU IV	EU IV	EU IV
Fuel type (Recommended)	Premium unleaded 95 RON	Premium unleaded 98 RON	Premium unleaded 98 RON	Diesel 51CZ	Diesel 51CZ	Diesel 51CZ

## Technical Specifications – Edition, Pacific & GT Sport continued

Engine	1.6 litre		2.0 litre FSI		1.4 litre TSI		1.9 litre TDI		2.0 litre TDI (103kw)		2.0 litre TDI (125kw)	
<b>Transmission</b>	5 Spd Man	6 Spd Auto	6 Spd Man	6 Spd Auto	6 Spd Man	6 Spd DSG	6 Spd Man	6 Spd DSG	6 Spd Man	6 Spd DSG	6 Spd Man	6 Spd DSG
Gearbox	Front wheel drive		Front wheel drive		Front wheel drive		Front wheel drive		Front wheel drive		Front wheel drive	
<b>Performance</b>												
0 – 100 km/h	11.4	12.5	8.8	9.5	7.9	7.7	11.1	11.2	9.3	9.3	8.2	8.2
Top speed, km/h	184	181	212	206	220	218	187	185	205	203	220	218
<b>Fuel Consumption*</b>												
Combined, L/100km	7.5	8.3	8.0	8.6	7.7	7.7	5.5	5.8	5.7	6.1	6.3	6.6
CO <sub>2</sub> emission g/km	180	199	192	206	184	183	149	157	154	165	166	174
Fuel tank capacity-litres	55	55	55	55	55	55	55	55	55	55	55	55

\* Fuel consumption figures according to Australian Design Rule (ADR) 81/01

The driving style, road and traffic conditions, environmental influences and vehicle condition can in practice lead to consumption figures which may differ from those calculated with these standards.

Running Gear	1.6 litre		2.0 litre FSI		1.4 litre TSI		1.9 litre TDI		2.0 litre TDI (103kw)		2.0 litre TDI (125kw)	
Suspension Front Axle Rear Axle	Independent, MacPherson struts with lower A-arms. Anti-roll bar. Sports Suspension (GT Sport) Independent, four-link with coil springs. Anti-roll bar. Sports Suspension (GT Sport)											
Steering	Electro-mechanical power assisted rack & pinion steering											
Brake Systems	Anti-lock Braking System (ABS) with Electronic Brake-pressure Distribution (EBD) and Brake Assist											
Brakes Front Rear	Ventilated Discs Discs											
Turning Circle (m)	10.9											
<b>Weights</b>	5 Spd Man	6 Spd Auto	6 Spd Man	6 Spd Auto	6 Spd Man	6 Spd DSG	6 Spd Man	6 Spd DSG	6 Spd Man	6 Spd DSG	6 Spd Man	6 Spd DSG
Tare Mass Kg's	1220	1275	1290	1325	1340	1375	1330	1365	1350	1385	1375	1410
Towing Capacity kg												
Braked*	1200	1200	1200	1200	1200	1200	1200	1200	1200	1200	1200	1200
Unbraked	620	620	620	620	620	620	620	620	620	620	620	620

\* With trailer brakes up to a gradient of 12%.

## Dimensions – Edition, Pacific & GT Sport

Exterior Dimensions	
Overall length mm	4204
Width mm	1759
Height mm	1485 (1479)
Wheelbase mm	2578
Track mm	
Front	1539 (1540)
Rear	1528 (1518)
Interior Dimensions	
Headroom mm	
Front	987
Rear	979
Shoulder room mm	
Front	1590
Rear	1386
Elbow room mm	
Front	1446
Rear	1437
Luggage area volume L	
Rear seat upright	347
Rear seat folded	1305
Luggage area floor length mm	
Rear seat upright	828
Rear seat folded	1581
Luggage area opening width mm	1044 width at widest point
Width between wheel arches mm	1006 width at narrowest point
Luggage load height mm	
To luggage cover	556
To roof lining	927

Figures in brackets relate to GT Sport models.



## Technical Specifications – GTI & R32

Engine	2.0 litre Turbo FSI	3.2 litre V6
Type	4 cyl inline petrol	6 cylinder 'V' configuration petrol
Installation	Front transverse	Front transverse
Cubic capacity, litres/cc	2.0 / 1984	3.2 / 3189
Bore/stroke, mm	82.5 / 92.8	84.0 / 95.9
Max power, kW @ rpm	147 @ 5100	184 @ 6300
Max torque, Nm @ rpm	280 @ 1800-5000	320 @ 2500 – 3000
Compression ratio	10.5:1	10.85:1
Fuel system	Bosch Motronic MED 9.1 FSI direct injection system	Bosch ME7.1.1 electronic multi-point injection system
Ignition system	Electronic	Electronic
Exhaust emission control	Exhaust gas recirculation, NOx storage-type catalytic converter, two pre-catalytic converters and lambda probes	3-way catalytic converter with lambda probe
Emission level	EU IV	EU IV
Fuel type (Recommended)	Premium unleaded 98 RON	Premium unleaded 98 RON

Transmission	6 Spd Man	6 Spd DSG	6 Spd Man	6 Spd DSG
Driven wheels	Front wheel drive		4MOTION all wheel drive	
<b>Performance</b>				
0 – 100 km/h	7.2	6.9	6.5	6.2
<b>Fuel Consumption*</b>				
Combined, L/100km	8.2	8.2	10.8	9.8
CO <sub>2</sub> emission g/km	197	197	259	235
Fuel tank capacity-litres	55	55	60	60

\* Fuel consumption figures according to Australian Design Rule (ADR) 81/01

The driving style, road and traffic conditions, environmental influences and vehicle condition can in practice lead to consumption figures which may differ from those calculated with these standards.

Running Gear	2.0 litre Turbo FSI	3.2 litre V6		
<b>Suspension</b>				
Front Axle	Independent, MacPherson struts with lower A-arms. Anti-roll bar. Sports Suspension lowered approximately 15mm	Independent, MacPherson struts with lower A-arms. Anti-roll bar. Sports Suspension lowered approximately 20mm		
Rear Axle	Independent, four-link with coil springs. Anti-roll bar. Sports Suspension lowered approximately 15mm	Independent, four-link with coil springs. Anti-roll bar. Sports Suspension lowered approximately 20mm		
Steering	Electro-mechanical power assisted rack & pinion steering			
Brake Systems	Anti-lock Braking System (ABS) with Electronic Brake-pressure Distribution (EBD) and Brake Assist			
<b>Brakes</b>				
Front	Ventilated discs			
Rear	Discs			
Turning Circle (m)	10.9	10.9		
<b>Weights</b>				
Tare Mass Kg's	6 Spd Man	6 Spd DSG	6 Spd Man	6 Spd DSG
	1340	1360	1510 (1530)	1510 (1530)

## Dimensions – GTI & R32

Exterior Dimensions	2.0 litre Turbo FSI	3.2 litre V6
Overall length mm	4216	4246
Width mm	1759	1759
Height mm	1466	1465
Wheelbase mm	2578	2578
Track mm		
Front	1539	1533
Rear	1528	1515
Interior Dimensions		
Headroom mm		
Front	987	987
Rear	979	979
Shoulder room mm		
Front	1590	1590
Rear	1386	1386
Elbow room mm		
Front	1448 (1446)	1448 (1446)
Rear	1479 (1437)	1479 (1437)
Luggage area volume L		
Rear seat upright	347	275
Rear seat folded	1305	1230
Luggage area floor length mm		
Rear seat upright	828	786
Rear seat folded	1581	1560
Luggage area opening width mm	1044 width at widest point	1227 width at widest point
Width between wheel arches mm	1006 width at narrowest point	1006 width at narrowest point
Luggage load height mm		
To luggage cover	556	452
To roof lining	927	823

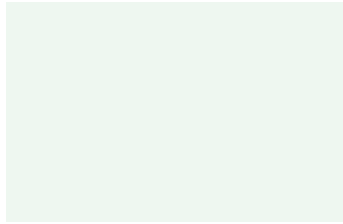
\* With trailer brakes up to a gradient of 12%.  
 Figures in brackets relate to 5 Door models.

# Colours and Upholstery

## Colours



Black Magic Pearl Effect



Candy White<sup>^</sup>



Shadow Blue Metallic



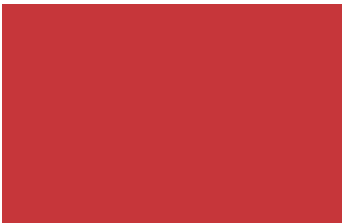
Reflex Silver Metallic



United Grey Metallic



Blue Graphite Pearl Effect



Tornado Red



Deep Blue Pearl Effect<sup>#</sup>

### Key

– Only available for GT Sport and GTI

□ Only available for Edition and Pacific

# R32 only

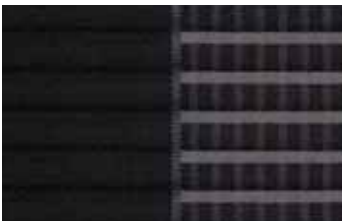
<sup>^</sup> Candy White is only available for R32 in combination with the optional electric glass sunroof at additional cost.

Please note: Metallic and Pearl Effect paint are optional at an extra cost. The print process does not allow for exact reproduction of the exterior or the upholstery colours. For further details, please contact your Volkswagen Dealer.

**Please contact your Volkswagen Dealer for further information on colours and upholstery combinations.**

## Upholstery

### Edition



Anthracite and Grey Cloth

### Pacific



Anthracite Sports Cloth

### GT Sport



Anthracite Red Sports Cloth

### GTI



Interlagos Cloth

### Optional Upholstery

Leather is optional for Pacific, GT Sport, GTI and standard for R32.



Anthracite Leather



Latte Macchiato Leather<sup>†</sup>

<sup>†</sup> Not available with Recaro bucket front seats.



# Owning a Volkswagen

## Volkswagen New Vehicle Warranty

Every new Volkswagen passenger vehicle is covered by a 3-year/100,000km (whichever occurs first) manufacturer's warranty, which includes Volkswagen Assist (24hr roadside assistance). Every new Volkswagen passenger vehicle is also covered by a 3-year paintwork and 12-year anti-corrosion perforation warranty.

## Volkswagen Assist – 24 Hour Roadside Assistance

As a valued customer, you can be assured that wherever you travel within Australia, you will have access to roadside assistance, 24 hours a day, 365 days a year. This is complimentary for the duration of the vehicle's original Volkswagen warranty period. You will receive help in the event of a breakdown or accident and if required, your vehicle will be mobilised or transported to an Authorised Volkswagen Repair Centre.

As a Volkswagen owner you will also have access to the additional benefits of accommodation and car rental if your vehicle cannot be mobilised within 24 hours, when you are over 100kms away from home. Volkswagen Roadside Assist can also be renewed at the expiry of the original warranty, ensuring ongoing coverage for your vehicle.

## Volkswagen Extended Warranty

To give you added peace of mind and the assurance of added security, you have the option to extend the factory warranty to suit your ownership cycle. If your Volkswagen was purchased new by you, we can offer you a 36 month/60,000km extension on your already existing Volkswagen manufacturers Warranty. Alternatively if your vehicle is already outside the Volkswagen manufacturers warranty period we can also offer you an extension of your factory warranty. Have the assurance that your Volkswagen remains a Volkswagen. For further information regarding warranty and extending your vehicles factory warranty, please consult your local Volkswagen dealer, refer to your owner's handbook or visit [www.volkswagen.com.au](http://www.volkswagen.com.au).

## Volkswagen Service

Your Authorised Volkswagen Service Centre is part of Volkswagen's global Quality Management System, ensuring all dealers are certified to ISO 9001:2000 – an internationally recognised Quality Standard. Authorised Volkswagen Service Centres have factory trained Technicians equipped with the very latest diagnostic equipment, specialist tooling and Volkswagen Genuine Parts. An Authorised Volkswagen Service Centre undertakes work in accordance to factory specified guidelines and maintenance schedules.

## Volkswagen Genuine Parts®

Volkswagen Genuine Parts® are designed for your vehicle and approved by Volkswagen, with particular regard to safety. The workmanship, dimensional accuracy and materials used in these parts comply with factory specifications. To ensure safety and reliability, Volkswagen recommends the use of Volkswagen Genuine Parts®. Volkswagen Authorised Dealers offer a 2-year warranty on Genuine Parts from the date of purchase.

## Volkswagen Finance

Buying, Borrowing or Leasing, Volkswagen Finance will certainly make you think differently about financing and insuring your new Volkswagen. Committed to meeting the needs of Volkswagen drivers, across Australia, we offer a range of leasing, financing and insurance products, each with distinct advantages depending on your specific circumstances. Our packages are personalised to suit your individual requirements. You design your plan so that it meets your budgeting needs and can rest assured that there will be no surprises along the way. Speak to your local participating Volkswagen Dealer today to put together a financial solution that best suits your lifestyle.

# Glossary

## Anti-lock Braking System (ABS)

When braking, wheel speed sensors measure the road wheel speed and should one or more wheels start to lock the ABS system reduces brake pressure to that wheel. This prevents the wheels from locking during heavy or emergency braking, enabling the vehicle to remain steerable.

## Anti-Slip Regulation (ASR)

ASR improves driving and steering characteristics by preventing the driven wheels from spinning under acceleration. When a difference in driving wheel speed is detected (i.e. when one wheel starts to spin due to differences in road surfaces, e.g. due to water or dirt) the system automatically reduces engine torque. ASR is a switchable traction control system.

## Brake Assist

During emergency braking, Brake Assist aids the driver by increasing the brake pressure automatically to a level exceeding the locking limit. The ABS is thus quickly brought into the operating range, which enables maximum vehicle deceleration to be achieved.

## Direct Shift Gearbox (DSG)

DSG is a manual gearbox in which the gearshifts are controlled electronically. What makes the DSG unique is that it has 2 separate gear sets operated by 2 wet multi-plate clutches. The benefit of 2 gear sets and 2 multi-plate wet clutches is that one gear set and clutch is engaged driving the vehicle with the second clutch having already pre-selected the next gear awaiting for power to be transferred. As the next gear has already been pre-selected prior to power being applied, the gear change only takes 3-4 100ths of a second. There is virtually no interruption to power, traction or acceleration. The DSG also offers Tiptronic gear selection and sports mode.

## Electronic Brake-pressure Distribution (EBD)

Electronic, more sophisticated means of regulating the ratio of front/rear brake pressure. Settings are varied according to driving and load conditions to ensure each wheel is braked to the optimum extent.

## Electronic Stabilisation Program (ESP)

ABS and ASR traction control systems are integrated into the Electronic Stabilisation Program (ESP). In short, ESP helps ensure that the vehicle goes where you steer it even in extreme driving conditions. The ESP system constantly compares the actual movement of the vehicle with pre-determined values and should a situation arise where the vehicle starts to skid, ESP will apply the brakes to individual wheels and automatically adjust the engine's power output to correct the problem. ESP prevents the vehicle from losing control when trying to avoid an accident, for example. It also prevents spinning off on a curve due to either understeer or oversteer.

## Hill Start Assist (HSA)

Hill Start Assist (HSA) holds the vehicle when the foot brake is released by temporarily locking the brake pressure (for a maximum of 1.5 seconds) to provide comfortable starting-off without rolling back. Hill Start Assist (HSA) operates on inclines greater than 5% and is fitted in combination with the Direct Shift Gearbox (DSG).

Volkswagen is distributed by Volkswagen Group Australia Pty Ltd, The Lakes Business Park, 6 Lord Street, Botany, NSW 2019. ABN 14 093 117 876. Specifications are as planned at July 2008, for Model Year 2009 and are subject to change without notice or obligation. All Volkswagen approved parts and accessories are warranted for 2 years/unlimited kilometres. All information in this specification sheet is correct at the time of publication, however variations may occur from time to time and Volkswagen, in so far as it is permitted by law to do so, shall not be liable in any way as a result of any reliance by any person on anything contained in this specification sheet. Authorised Volkswagen dealers will provide up-to-date information on model application, design feature, prices and availability on request.

Volkswagen Insurance & Volkswagen Extended Warranty are provided by Allianz Australia Insurance Limited (Allianz), AFS Licence No. 234708, ABN 15 000 122 580. In arranging this insurance Volkswagen Financial Services Australia Limited, ABN 20 097 071 460 & Volkswagen Group Australia Pty Ltd, ABN 14 093 117 896 and the authorised dealers act as agents of Allianz and not as your agent. Volkswagen Finance is a trading name of Volkswagen Financial Services Australia Limited. Locked Bag 5009, Alexandria NSW 2015. Tel: 02 9695 6311.



**Das Auto.**

# **Volkswagen Golf**

**Publication: VGA3009J**

**Internet: [www.volkswagen.com.au](http://www.volkswagen.com.au)**