



Das Auto.

Volkswagen Touareg





Touareg philosophy: combine luxury sedan comfort, driving exhilaration and all-terrain ability.

Overseas specification vehicles are shown in this brochure.
Some features and options may not be available in Australia.



Driving a Touareg means never having to decide again. Not between advanced on-road performance and extreme off-road ability. Don't choose between luxury sedan comfort and superior cross-country mobility. Nor select between easy handling and an exciting driving experience. The Touareg is the choice for unlimited experiences, no matter which route you take.

All roads, or no roads, the Touareg will bring a smile to your face wherever you venture.

The Touareg range is the only thing you'll need to contemplate, with five models to choose from – the R5 TDI, the V6 FSI, the V6 TDI, the V10 TDI and the range-topping R50.



Inside: an atmosphere of luxury.

Looks can be deceptive and the Touareg is living proof. Powerful and extroverted from the outside, the Touareg provides a calm and tranquil inner cabin.

More than simply a pinnacle in all-terrain performance, the interior of the Touareg has luxury saloon pedigree. Built using only the finest and most elegant of materials, the Touareg range offers the grace of wood finishes with the luxury of leather and the class of brushed alloy and chrome.

The subtle use of interior lighting and textured finishes combine to accentuate the stylish interior design.

Ergonomics dictate the clear and intuitive layout of controls and displays. The **steering wheel controls** can be used to operate the **multi-function trip computer** positioned between the main dials, as well as the cruise control and audio functions.



Standard **dual zone climate control** air-conditioning allows the driver and passenger to control the temperature in their own individual space, while the optional 4 zone system (standard on V10 TDI and R50) allows each quarter of the cabin to be individually adjusted. Intelligent solutions like the '**set and forget**' **automatic function** that turns wipers on and off as needed, or activates the headlights and the rear-view mirror that automatically dims to reduce glare from following vehicles, all help the driver to have a pleasant journey.

In-car entertainment is supplied by the premium sound system with single in dash CD player and 10 speakers. Additionally, a **six-disc CD changer** is mounted in the luggage area for long trips.

Wherever your destination, the optional **satellite navigation** will guide you there. Whether you are heading for a five-star city hotel or a rural retreat, satellite navigation will choose the most appropriate route.





First class comfort for five people plus luggage, and a towing capacity that is first class too.

The Touareg is immensely practical. With the rear seats upright the Touareg has **555 litres of luggage space** (V10 TDI and R50 500 litres) available but drop down the rear seats and that almost trebles to a spacious 1,570 litres (V10 TDI and R50 1,525 litres). The retractable luggage net system lets you transport your belongings safely.

If you are driving a model with **air suspension** (optional on V6 FSI and V6 TDI, standard on V10 TDI and R50), the Touareg will automatically select the most appropriate suspension setting to suit the load.

When it comes to **loading and unloading**, the Touareg features a design that allows the rear window to be opened independently of the tailgate itself. For maximum loading convenience, the Touareg can be lowered to a reduced ground clearance when fitted with air suspension (standard on V10 TDI and R50).

If further proof were needed of the Touareg's capability, consider its towing capacity – up to a massive **3,500kg**.



Engine	R5 TDI	V6 FSI	V6 TDI	V10 TDI	5.0 V10 TDI
Type	5 cyl in-line turbo diesel	6 cyl 'V' petrol	6 cyl 'V' turbo diesel	10 cyl 'V' bi-turbo diesel	10 cyl 'V' bi-turbo diesel
Installation	Front longitudinal	Front longitudinal	Front longitudinal	Front longitudinal	Front longitudinal
Cubic capacity, litres/cc	2.5/2460	3.6/3597	3.0/2967	5.0/4921	5.0/4921
Bore/stroke, mm	81.0/95.5	89.0/96.4	83.0/91.4	81.0/95.5	81.0/95.5
Max power, kW @ rpm	128 @ 3500	206 @ 6200	176 @ 4000-4400	230 @ 3750	258 @ 3500
Max torque, Nm @ rpm	400 @ 2250	360 @ 2500	550 @ 2250-2500	750 @ 2000	850 @ 2000
0 – 100km/h	11.6	8.6	8.3	7.4	6.8
Combined, L/100km	10.4	13.3	9.9	12.6	12.6

Engines designed for mountainous peaks, highways and everything in between.

Whether you are cruising down a motorway or going off-road, it's reassuring to know you have plenty of power in reserve. With the Touareg you have a choice of one petrol engine and three diesel engines. Each represents the very latest in Volkswagen engine technology – efficient, powerful and clean.

R5 TDI

The R5 TDI is a 2.5 litre in-line turbo diesel engine with advanced pump injection technology, representing Volkswagen's new generation of diesel powerplants. Maximum torque is 400Nm from only 2250rpm and peak power is 128kW at 3500rpm. Fuel consumption is a remarkable 10.4L/100kms*, providing a range of up to 960kms on one tank of fuel.

V6 FSI

The V6 FSI offers class leading 6 cylinder power utilising advanced direct petrol injection technology. In any situation, the 206kW V6 FSI engine provides strong performance. Developing peak torque of 360Nm at 2,500rpm, it can accelerate from standstill to 100km/h in just 8.6 seconds. Top speed is an impressive 218 km/h where the law permits.

V6 TDI

With the advanced TDI technology, the 176kW 3.0 V6 TDI has maximum torque of 550Nm from only 2,250rpm and peak power is 176kW at 4,000rpm. The V6 TDI completes the 0-100km/h sprint in 8.3 seconds. Fuel consumption is 9.9L/100kms*.

V10 TDI

The V10 TDI has redefined what a diesel engine can achieve, which is not surprising from a twin-turbo V10 that develops 230kW of power. An incredible 750Nm of torque is available at just 2000rpm. From standstill, 100km/h will be reached in a mere 7.4 seconds and where the law permits, a top speed of 231 km/h. Even with such performance, fuel consumption is only 12.6L/100kms*.

5.0 V10 TDI

The R50 specification of the V10 TDI engine is marked by a seriously impressive torque level. At just 2,000 rpm the SUV's ten-cylinder TDI develops a maximum torque of 850 Newton meters.

This means that in practically every gear and speed range it offers awesome torque-laden power. 258kW of power enables 0 to 100km/h acceleration in a rapid 6.8 seconds, with a top speed of 234km/h where the law permits. Despite staggering gains in power and torque, fuel consumption values have remained constant compared to the 5.0 V10 TDI, being only 12.6L/100kms*.

*Fuel consumption figures according to Australian Design Rule (ADR) 81/01.



Volkswagen Turbo Diesel: technology you can appreciate.

TDI

Volkswagen Turbo Diesel Injection (also known as TDI) provides customers with the best of both worlds – the refinement, performance and cleanliness of a petrol engine with the economy of a diesel.

Economy

Volkswagen TDI engines use **significantly less fuel** than an equivalent size petrol engine. This fuel efficiency provides much lower running costs.

Environment

From an environmental perspective, Volkswagen diesel engines produce considerably **less CO₂ emissions** than an equivalent size petrol engine. When you consider that the diesel engine is also using less fuel at the same time, there is a greatly reduced impact on the environment. Each Touareg TDI engine also comes equipped with a standard diesel particulate filter.

Performance

A characteristic of Volkswagen TDI engines is the abundant amount of torque available at very low revs. This provides improved 'drive-ability' and flexibility. In practical terms, the large amount of torque makes hills and traffic easy to negotiate.

The mighty Touareg R50 raises the diesel engine performance bar to new heights. It is equipped with one of the world's most powerful series production passenger car diesel engines, boasting an awe inspiring **850Nm of torque** and completing the 0–100km/h dash in a mere 6.8 seconds.

**Convenience**

Volkswagen diesel engines will travel much further on a tank of fuel than an equivalent sized petrol engine. The R5 TDI can travel up to a remarkable 960kms per tank*. A **greater fuel range** means fewer trips to the petrol station.

Refinement

The advanced technology incorporated in Volkswagen turbo diesel engines provides a high level of refinement and quietness.

*This is combined city/highway driving as per the Australian Standard ADR 81/01.



Touareg R50 - ultimate performance with sports inspired luxury.



Introducing the new range topping Touareg R50, serving up an impressive 258kW at 3,500rpm, the new Touareg is an absolute powerhouse. The 5.0 V10 turbo diesel engine has been significantly upgraded offering an additional 28 kW of power and a considerable 100Nm of maximum torque. Under these new parameters the R50 accelerates to 100 km/h in just 6.8 seconds. Impressive to say the least!

You'll know you're travelling in a serious sports contender thanks to the R50's innovative sport chassis with driving dynamics package as standard. The driving dynamics package is comprised of sport mode air suspension, Continuous Damping Control (CDC) and adaptive roll compensation. These features combined result in the benefits of minimised body pitch and roll. Naturally, 4XMOTION permanent all wheel drive comes standard.



The R50 is equipped with numerous sophisticated safety technologies. Driver and occupant safety are never overlooked with active safety systems designed and coordinated to reduce the potential of a crash. Braking performance is increased via larger discs with high thermal stability and importantly, with ABSplus braking distance on loose surfaces is reduced by up to 20 percent.

In keeping with the R design philosophy, Volkswagen Individual has designed stunning new exterior and interior features making the Touareg R50 just as hot externally as it is under the bonnet. The exterior boasts

an impressive matte finish chrome radiator grille, distinctive bumpers, side skirts and sporty wheel arch flares. Other striking features include distinctive blue brake calipers, muscular 21" Omanyt alloy wheels and polished steel twin exhaust pipes. Each of the R50's individual design elements exudes power, sophistication and aesthetics synonymous with a true sports performer.

Once inside the cockpit of the almighty Touareg R50 you'll discover the true meaning of luxury and comfort. The superb interior features a sport seating system adorned in anthracite Napa leather to caress both driver



Rear spoiler shown not available in Australia.



and passenger alike. The head restraints are embellished with the R logo also found on the stainless steel door sill inlays and gearshift lever of the six-speed Tiptronic automatic transmission. Further evidence of the R50's sporty character is the 'engine spin' interior decor – a metallic structure similar to that traditionally found in race cars. Nothing is overlooked in the R50, even the accelerator and brake pedal caps are specially crafted from striking machined metal.

The R50's decadent interior combines the best of both sports cars and luxury sedans. Passengers can indulge in

all manner of comfort features to personalise their journey. To ensure optimum comfort, front and outer rear electric sport seats are individually heated and feature a valuable memory function. This is complimented by a 4 zone dual climate control air conditioning system to ensure ideal temperatures across the board. The R50's multitude of impressive standard features amount to a distinctive and superb performance vehicle.







Safety: protected inside and out.

Driving can create many unforeseeable situations on or off road. For this reason, safety features were high on the agenda when it came to developing the Touareg.

To begin with, the construction of the Touareg provides great strength and rigidity. This has been achieved through steel tubes in the side sills, the use of high strength steel, laser welding to the seams and overall galvanising. Through extensive crash testing, the body shell has been designed with extremely high built-in energy absorption at the front end. Should a frontal crash occur, the resulting forces are diverted around the safety zone, to provide extensive protection against occupant injuries.

Front and rear parking distance sensors with audible and visual warnings help with parking and are standard on all models.

The interior is equally blessed with extensive safety features including **six airbags** – two in the front, two at the side (front seats) and curtain airbags, front and rear for additional protection from side impacts.

All passengers are protected by 3-point seatbelts. The front and outer-rear seatbelts feature **height adjustment** and also incorporate **pre-tensioners** for added safety.



01



02



03

In November 2004, the Volkswagen Touareg was awarded the highest possible score within the internationally recognised Euro NCAP safety tests, a total of **five Euro NCAP stars** for frontal and side impact.*

Pedestrian protection measures have also been incorporated, including an aluminium engine bonnet with improved deformation characteristics as well as self-regenerating plastic bumpers and front guards, which help reduce the risk of pedestrian injuries.

- 01** The passenger safety cell is formed from steel panels with optimised strengths utilising the most advanced manufacturing techniques and materials.
- 02** The Touareg is equipped with a total of six airbags, providing optimum protection for all passengers.
- 03** Front and rear parking distance sensors with acoustic and visual warning help you when parking.



*Award source: 2004 Volkswagen Touareg awarded the maximum "5 star" Front and side impact rating, by independent European motor vehicle safety assessment organisation Euro NCAP (European New Car Assessment Programme).



Complex systems for active protection.

The Touareg is designed with intelligent regulating systems that make it easy to handle on and off road while providing a high level of 'active safety'.

To begin with, there is the proven safety of an **Anti-lock Braking System (ABSplus)**, which prevents the wheels locking during braking. Wheel speed sensors measure the road wheel speed and the ABSplus system reduces brake pressure to one or more locking wheels. This allows you to steer around a potential hazard. To complement

this, **Electronic Brake-pressure Distribution (EBD)** proportions braking pressure between the front and rear wheels to ensure optimum braking effect, especially with a load in the vehicle. The **Brake Assist** feature identifies an emergency stop and immediately boosts braking pressure to its maximum level, to reduce the stopping distance.

With **Electronic Stabilisation Program (ESP)**, sensors detect the onset of oversteer or understeer and help restore the Touareg to its chosen path.

EDL

ASR

EBC



It also helps to suppress skids as soon as they begin. There's also **Anti-Slip Regulation (ASR)** that prevents the driven wheels from spinning by intervening in the engine management system and reducing power when necessary.

On loose or slippery surfaces, you can rely on the **Electronic Differential Lock (EDL)** to help improve traction. If a wheel starts to spin, the brake is applied and the tractive force is then diverted to the other wheels via the differential.

Finally, **Engine Braking Control (EBC)** is designed to prevent the driven wheels from locking if the accelerator is lifted suddenly, or the vehicle is braked sharply because a low gear is engaged.

Created to be the pinnacle in all terrain performance.

There's an easy way to discover the difference between the new Touareg and a conventional four-wheel drive – through your fingertips. Just a simple turn of the control and you can adjust the **air suspension** settings to suit the driving conditions (standard on V10 TDI and R50 and optional on V6 FSI and V6 TDI).

The chassis is complemented perfectly by the remarkably smooth transmission: a **six speed automatic** which employs **Dynamic Selection Program (DSP)** that modifies the shift points to match individual driving styles. It assesses several criteria including accelerator and brake movement, trailer weight (if fitted), uphill or downhill gradients and gearshift frequency. Alternatively, should you prefer more involvement, you can override gear changes manually through the **Tiptronic** gear lever.



Overseas model shown

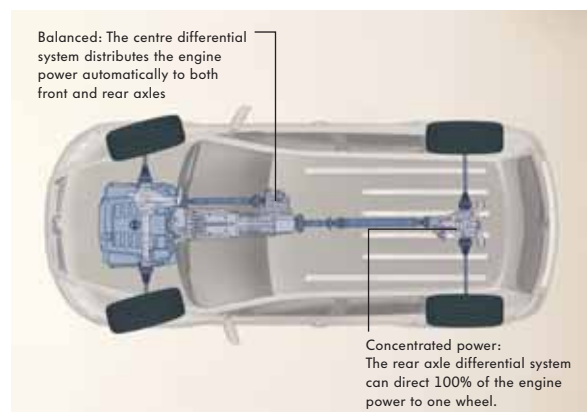


Off-road, the Touareg is entirely in its element due to its advanced 4XMOTION permanent four-wheel drive system. In normal situations the torque is split 50:50 between the front and rear axles, but remarkably, the Touareg can automatically direct 100% of the torque to a single wheel should the conditions prove that demanding.

As you would expect of a true off-road performer, you can choose to lock the centre differential manually – for absolute predictability. With a maximum ground clearance of 237mm (300mm with air suspension) the Touareg has outstanding off-road ability.

Air suspension is standard on V10 TDI and R50 (optional on V6 FSI and V6 TDI) and features automatic self-levelling and variable ride height.

It has **Continuous Damping Control (CDC)**, which takes effect according to road speed and driving conditions. Using electronic damping control, body pitch and roll are minimised for greater stability and comfort.



01



- 01 The Touareg can be ordered with an optional rear spare wheel carrier. The hinged carrier is constructed of alloy, is lockable for security, and includes an alloy spare wheel to match your vehicle. Image shows optional chrome roof rails.
- 02 The Reversing Camera fitted on the rear of the vehicle transmits pictures direct to the colour screen of the navigation system and shows you the anticipated path.
- 03 The Touareg offers an optional automatic tailgate for fully automatic opening and closing of the tailgate.
- 04 Optional Bi-xenon headlights produce a much clearer, brighter light, giving you a better view of the road ahead and helping you drive more safely. Headlight washer helps keep headlights free from dirt, ensuring maximum visibility.
- 05 The optional electric sunroof with sunblind offers both slide and tilt opening functions.
- 06 Stylish 20" Mountain alloy wheels are optional on the V6 FSI, V6 TDI and V10 TDI.



03



Optional Equipment.

The Touareg is available with a great list of extras that can make your choice even more individual. The Touareg can be ordered with an optional **alloy spare wheel**, mounted on a hinged carrier. You can also opt for **air suspension** or **Bi-xenon headlights** (standard on the V10 TDI and R50).

The **tow bar** is rated at 350Kg on the tow ball and provides a 3,500Kg towing capacity (where trailer brakes are fitted), giving you enormous towing flexibility and options.

The option of an **automatic tailgate** for all models offers fully automatic opening and closing of the tailgate via the remote and a button on the tailgate.

The optional **Bi-xenon headlights** with automatic self-levelling and headlight cleaning system (standard on the V10 TDI and R50) are stunning. The **dynamic cornering light system** swivels horizontally to allow better illumination of the cornering path. It's a brilliant piece of inspired thinking.

The slide and tilt adjustable **electric glass sunroof** with a sunblind is a touch of luxury and comfort that lets the outside in.



Optional Equipment (continued).

Choose from an optional **Cricket leather upholstery package** with 12-way electric and individually heated front seats and heated washer nozzles for the R5 TDI.

A convenient option is the **satellite navigation system** that keeps you heading in the right direction and delivers perfect sound quality while the **rear seat DVD entertainment system** assures the kids are entertained for hours.

A touch of real luxury comes in the form of a **wood/leather multi-function steering wheel** and

walnut wood/brushed aluminium inserts in the dashboard and doors.

Breathe easy in the comfort of the **4 zone climate control dual air conditioning system** with innovative vents in the rear cabin for the added comfort of rear seat passengers.

The optional **memory package** stores positions for the front seats, steering column, seat belt height, and the electrically folding, automatically dimming door mirrors (not available on the R5 TDI).

- 01 The optional satellite navigation system guides you to your destination and also delivers perfect sound quality.
- 02 The optional rear seat entertainment system with a 7" LCD colour display and DVD player entertains for long drives.
- 03 The Volkswagen Individual design package enhances the Touareg from every angle and adds a distinctive, sporty element.
- 04 The optional Dynaudio sound system consists of ten carefully matched treble, mid-range and bass speakers together with a 10 channel amplifier delivering full, transparent sound and an incredible output of 600 watts.



Touareg Individual Package (optional extras).

Optional styling features are available with the Touareg Individual package to enhance and distinguish your Touareg:

- Siena 19" alloy wheels in Titanium silver with 275/45 tyres
- Chrome roof rails
- 'Individual' badges on front wheel guards, left and right
- Macassar fine wood trim inlays for dashboard, centre console and door trims
- Stainless steel front door sill trims with 'Individual' lettering and logo
- Seat upholstery in a dual-colour and dual-style leather combination
- 'Individual' logo on front head restraints
- Carpet floor mats, front and rear with matching colour edging

The following Volkswagen Individual options can be added to further individualise the Touareg Individual package:

- Black piano lacquer trim inlays
- Volkswagen Individual design package

- 01** Stylish decors are available in Macassar grain inlays.
- 02** The comfort seats of the Touareg can be refined by a Napa leather combination of "Bark Brown/Anthracite" or "Dakota/Anthracite".
- 03** Black Piano lacquer trim inlays can be added.
- 04** Stylish 19" Siena alloy wheels are part of the Touareg Individual Package.



Volkswagen Genuine Accessories.

Movement fascinates. In fact, there are few subjects that excite people more, that's because movement is synonymous with freedom. Our comprehensive range of genuine accessories give you the freedom to customise the look and feel of your vehicle to reflect your own personality and individual sense of style.

The product philosophy is simple – to deliver innovative technologies and premium design – right down to the finest detail. Each and every genuine accessory has been designed specifically with the Touareg in mind and has been engineered and rigorously tested to ensure that it meets the same high standards of quality as the vehicle itself.

No matter what you choose you can have peace of mind knowing that any genuine accessory fitted by your local Volkswagen Dealer, at the time of your vehicle purchase will be covered by the same warranty as the vehicle itself.

For more information or to experience the full range of genuine accessories designed to suit the Touareg, visit your local Volkswagen Dealer.



Satellite Navigation System



iPod Adaptor



Bluetooth Phone Kit



Front and Rear Mud Flaps



Rubber Floor Mats



Luggage Nets



Slim Line Weather Shield



Plastic Boot Tub



Boot Mat, Rubber



Bicycle Carrier



Roof Bars



Kayak Holder



Tow Bar



Ski & Snowboard Holder



Side Steps



17" Suez Alloy Wheel



17" Tangis Alloy Wheel



19" Namib Alloy Wheel



18" Dakar Alloy Wheel*
*R5 TDI Only

Bicycle, kayak, skis and snowboard not available for purchase from Volkswagen or its dealers.

Specifications

	R5 TDI	V6 FSI	V6 TDI	V10 TDI	R50
Safety and Security					
Airbags					
Driver and front passenger airbags	S	S	S	S	S
Driver and front passenger side airbags	S	S	S	S	S
Curtain airbags, front and rear	S	S	S	S	S
Rollover sensor system	S	S	S	S	S
Anti-theft					
Anti theft alarm system for doors, bonnet, boot, interior and tilt sensor	–	S	S	S	S
Engine immobiliser (rolling code)	S	S	S	S	S
Body					
Aluminium bonnet	S	S	S	S	S
Door side impact protection	S	S	S	S	S
Fully galvanised, unitary constructed body with rigid safety cell and front and rear programmed crumple zones	S	S	S	S	S
Front guards made from impact absorbing polycarbonate	S	S	S	S	S
12 year anti-corrosion perforation warranty	S	S	S	S	S
Brakes					
Anti-lock Braking System (ABSplus)	S	S	S	S	S
Electronic Brake-pressure Distribution (EBD)	S	S	S	S	S
Brake Assist	S	S	S	S	S
Foot operated parking brake	S	S	S	S	S
Child restraint					
Child seat anchor points mounted on rear seat (3)	S	S	S	S	S
Fog lights					
Front fog lights, mounted in lower bumper	O	O	O	S	S
Rear fog lamp	S	S	S	S	S
Head restraints					
Front safety optimised head restraints, height adjustable	S	S	S	S	S
Rear adjustable and removable (3)	S	S	S	S	S
Locking					
Remote central locking with deadlock mechanism	S	S	S	S	S
Keyless access system with engine start button	–	–	–	S	S
2 stage unlocking (programmable)	S	S	S	S	S
Automatic locking after takeoff (programmable)	S	S	S	S	S
One touch lock/unlock for driver and front passenger	S	S	S	S	S
Electrically operated child safety lock for rear doors	S	S	S	S	S
Seat belts					
Front and outer rear height adjustable	S	S	S	S	S
Front electrically height adjustable with memory function	–	–	–	S	S
Pre-tensioners for front and outer rear passengers	S	S	S	S	S
Belt force limiters for driver and front passenger	S	S	S	S	S
Warning buzzer and light for driver and front passenger seat belts not fastened	S	S	S	S	S
3 point seat belts for all passengers	S	S	S	S	S
Traction control					
Electronic Differential Lock (EDL)	S	S	S	S	S
Anti-Slip Regulation (ASR)	S	S	S	S	S
Electronic Stabilisation Program (ESP) with active rollover protection function	S	S	S	S	S
Engine Braking Control (EBC)	S	S	S	S	S
Hill descent assistance and hill holding assistance	S	S	S	S	S
4XMOTION					
Permanent four wheel drive	S	S	S	S	S
Transfer gearbox with low range off-road ratio	S	S	S	S	S
Centre differential with an electrically operated differential lock	S	S	S	S	S
Exterior Equipment/Styling					
Body enhancements					
Radiator grille and lower bumper centre air intake surround in chrome	S	S	S	S	S
Frame of radiator grille in matte chrome	S	S	S	S	S
Chrome trim on side windows, rear bumper step and lower door panels	S	S	S	S	S
Lower bumper outer air intake horizontal bars with chrome trim	–	–	–	S	–
R50 design package consisting of front and rear bumpers in 'R' sports design, body side lower sill extensions, wheel arch extensions, dual chrome oval exhaust tailpipes and R50 badges front and rear	–	–	–	–	S
Side steps	A	A	A	A	–
Glass					
Heat insulating tinted glass	S	S	S	S	S
Rear side windows and rear window dark tinted privacy glass	–	–	–	–	S
Protection					
Bonnet protector	A	A	A	A	A
Headlight protector	A	A	A	A	A
Mudflaps, front	A	A	A	A	A
Mudflaps, rear	S	S	S	S	A
Slimline weather shields	A	A	A	A	A

Specifications continued

	R5 TDI	V6 FSI	V6 TDI	V10 TDI	R50
Exterior Equipment/Styling <small>continued</small>					
Roof					
Roof rack guide rails, Black	S	S	S	–	–
Roof rack guide rails, Chrome	–	–	–	S	–
Roof rails with roof profile strips, Chrome	O	O	O	O	S
Bicycle, ski, surfboard and kayak holders	A	A	A	A	A
Luggage rack	A	A	A	A	A
Roof cross bars	A	A	A	A	A
Ski and luggage box (450 litres)	A	A	A	A	A
Wheels					
Alloy wheels (Canyon) 17 x 7½" with 255/60 R17 tyres	S	–	–	–	–
Alloy wheels (Makalu) 17 x 7½" with 255/60 R17 tyres	–	S	S	–	–
Alloy wheels (Karthoum) 18 x 8"	A	A	A	A	–
Alloy wheels (Namib) 19 x 9"	A	A	A	A	A
Alloy wheels (Terra) 19 x 9" with 275/45 R19 tyres	–	–	–	S	A
Alloy wheels (Omanyt) 21 x 10" with 295/35 R21 tyres	–	–	–	–	S
Anti-theft wheel bolts	S	S	S	S	S
Weight and space saving steel spare wheel	S	S	S	S	–
Tyre mobility set, 12-volt compressor and tyre sealant	–	–	–	–	S
Tyre pressure monitoring system	–	–	–	S	S
Comfort and Convenience					
Armrests					
Front centre armrest, adjustable with integrated storage compartment	S	S	S	S	S
Rear seat centre armrest, foldable	S	S	S	S	S
Boot sill protection – stainless steel					
	S	S	S	S	S
Carpet mats					
Front and rear	S	S	S	S	S
Climate control air-conditioning					
Dual zone climate control air conditioning	S	S	S	–	–
4 zone climate control dual air conditioning	O	O	O	S	S
Air quality sensor with automatic air recirculation	S	S	S	S	S
Dust and pollen filter	S	S	S	S	S
Cruise control					
	S	S	S	S	S
Cup holders					
Front (2)	S	S	S	S	S
Rear (2)	S	S	S	S	–
Floor mats					
Front and rear, carpet	S	S	S	S	S
Front and rear, rubber	A	A	A	A	A
Fuel filler flap					
Electrically operated via switch on drivers door	S	S	S	S	S
Grab handles					
Soft fold away grab handles	S	S	S	S	S
Headlights					
Halogen headlights with clear lightweight polycarbonate lenses	S	S	S	–	–
Bi-xenon headlights for high/low beams with dynamic cornering lights, automatic self levelling and headlight cleaning system	O	O	O	S	S
Low light sensor with automatic headlight function	S	S	S	S	S
Coming/leaving home function	S	S	S	S	S
Headlight-on warning buzzer	S	S	S	S	S
In car entertainment					
AM/FM radio, theft deterrent warning light and security coding	S	S	S	S	S
CD player, in dash	S	S	S	S	S
6 disc CD changer, mounted in luggage area	S	S	S	S	S
10 speakers, front and rear	S	S	S	–	–
Volkswagen sound package – 8 channel amplifier with 11 speakers	–	–	–	S	S
Antenna mounted in side rear window	S	S	S	S	S
Bluetooth® integrated hands free phone kit	A	A	A	A	A
iPod® adaptor (not available with optional CD changer)	A	A	A	A	A
Instrumentation					
Speedometer and tachometer, electronic odometer and tripmeter, service interval display, digital clock, fuel, voltage, coolant & oil temperature gauges and low fuel warning light	S	S	S	S	S
Interior highlights					
Charcoal metallic inserts in dashboard, centre console and doors	S	–	–	–	–
Walnut wood/brushed aluminium inserts in dashboard, console and doors	O	S	S	S	–
Engine spin/brushed aluminium inserts in dashboard, console and doors	–	–	–	–	S
Chrome trim surrounding instrument dials and gear lever	S	S	S	S	S
Door sill trim with metal inlay, R50 with logo	–	–	–	S	S
Aluminium accelerator and brake pedals, R50 with 'R' flags	–	–	–	S	S
Leather gear shift knob with aluminium insert	S	S	S	S	S
Interior lighting					
Passenger reading lights, front and rear with time delay	S	S	S	S	S
Illuminated interior door release handles and adjustable passenger foot wells, front and rear	S	S	S	S	S
Exit lighting on all doors	S	S	S	S	S

Specifications continued

	R5 TDI	V6 FSI	V6 TDI	V10 TDI	R50
Comfort and Convenience <small>continued</small>					
Luggage compartment					
Luggage compartment cover and net partition, retractable	S	S	S	S	S
Luggage compartment lights and load restraining hooks	S	S	S	S	S
Luggage compartment protection – moulded foam inlay, plastic tub or anti-slip moulded plastic	A	A	A	A	A
Luggage net	A	A	A	A	A
Mirrors					
Automatic dimming interior rear-view mirror with dashboard lighting	S	S	S	S	S
Electrically adjustable, foldable and heated exterior mirrors	S	S	S	–	–
Electrically adjustable with memory function, foldable and heated exterior mirrors, automatically dimming on driver's side	–	–	–	S	S
Automatic kerb function when reversing, passenger's side exterior mirror	–	–	–	S	S
LED turn indicators mounted in exterior mirrors	S	S	S	S	S
Paint					
Metallic or Pearl Effect paint finish	O	O	O	O	S
Parking distance sensors					
Front and rear with audible and visual warnings	S	S	S	S	S
Power steering					
Hydraulic, vehicle speed and steering input sensitive	S	S	S	S	S
Seating					
Manual height adjustment for front seats	S	–	–	–	–
Electrically adjustable front seats with 12-way adjustment	–	S	S	–	–
Electrically adjustable front seats with 12-way adjustment and 3 position memory function	–	O	O	S	–
Electrically adjustable front 'R' style sports seats with 12-way adjustment and 3 position memory function	–	–	–	–	S
Individually heated front seats	–	S	S	S	S
Individually heated outer rear seats	–	–	–	–	S
Electrically adjustable lumbar support for front seats	–	S	S	S	S
Rear seat load through provision with ski sack	–	–	–	–	S
Split folding rear seat backrest (60:40) and seat base	S	S	S	S	S
Steering wheel					
Cruise control, Multi-Function Display and audio controls	S	S	S	S	S
Height and reach adjustable	S	S	S	–	–
Electrically height and reach adjustable with memory and easy entry function	–	–	–	S	S
Leather rimmed 4 spoke multi-function steering wheel	S	S	S	S	S
Tiptronic gearshift paddles mounted to steering column	–	–	–	–	S
Storage					
Central compartment on the dash panel with lid	S	S	S	S	S
Centre console tray and 12 volt socket with retractable lid	S	S	S	S	S
Chillable glove box with illumination, lockable	S	S	S	S	S
Front seat backrest pockets	S	S	S	S	S
Front door pockets	S	S	S	S	S
Rear door pockets and storage trays	S	S	S	S	S
Sunglass compartment in roof console	S	S	S	S	S
Sun visors					
Driver and passenger double sun visors	S	S	S	S	S
Tailgate					
Loading sill protection – stainless steel	S	S	S	S	S
Released electrically via switch on driver's door	S	S	S	S	S
Two part tail gate, opening rear window	S	S	S	S	S
Trip Computer					
Multi-Function Display (MFD Plus) – trip time, trip length, average speed, distance to empty, average fuel consumption, current fuel consumption, outside air temperature, speed warning system, low range, audio system display, convenience menu and gear position	S	S	S	S	S
Monochrome display screen	S	S	S	–	–
Colour large format display screen	–	–	–	S	S
Upholstery					
Trail cloth	S	–	–	–	–
Cricket leather	O	S	S	–	–
Napa leather, R50 with logo embossed in head restraint	–	O	O	S	S
Vanity mirrors, illuminated on driver's and passenger's side	S	S	S	S	S
Warning lights for open tailgate and doors	S	S	S	S	S
Wipers					
2 speed wash/wipe and intermittent wipe with 4 position delay	S	S	S	S	S
Heated washer jets	–	S	S	S	S
Rain sensors	S	S	S	S	S
Rear window with wash/wipe & intermittent wipe	S	S	S	S	S
Windows					
Power front/rear, with roll-back function, driver with one-touch up-down	S	S	S	S	S
Key operated convenience close and open feature	S	S	S	S	S
12V socket					
Centre console, front and rear	S	S	S	S	S
Luggage area	S	S	S	S	S

Specifications continued

	R5 TDI	V6 FSI	V6 TDI	V10 TDI	R50
Optional Equipment					
4 zone climate control dual air conditioning system Not available in conjunction with Touareg Individual package	O	O	O	S	S
Air suspension with Continuous Damping Control (CDC) and large colour Multi-Function Display (MFD Plus)	-	O	O	S	S
Alloy wheels Mountain 20 x 9" alloy wheels (4) with 275/40 R20 tyres Not available in conjunction with Touareg Individual package	-	O	O	O	-
Alloy spare wheel, hinged carrier mounted to rear Replaces weight and space saving steel spare wheel and air compressor. Not available in conjunction with automatic tailgate or Rear View Camera Plus	O	O	O	O	-
Audio Dynaudio 600W premium audio system with 10 channel amplifier and 10 speakers	O	O	O	O	O
Automatic tailgate Automatic opening and closing of the tailgate via remote and button on tailgate	O	O	O	O	O
Bi-xenon headlights Xenon headlights for high and low beam with dynamic and static cornering lights Automatic self levelling and headlight cleaning system	O	O	O	S	S
Body enhancements Volkswagen Individual – Exterior design package consisting of front and rear body coloured bumpers in a sports design, body side lower sill extensions, front fog lights (standard V10 TDI) and oval exhaust tailpipes The Volkswagen Individual exterior design package is not fitted with rear mud flaps	-	O	O	O	-
Electric glass sunroof, slide and tilt adjustable with sunblind	O	O	O	O	O
Electric equipment/Memory package Electric adjustment and memory function for front seats, steering wheel, exterior mirrors and front seat belt height Automatic kerb function when reversing, passenger's side	-	O	O	S	S
Front fog lights, mounted in lower bumper	O	O	O	S	S
Interior highlights Volkswagen Individual – Black piano lacquer/brushed aluminium inserts in dashboard, console and doors Walnut wood/brushed aluminium inserts in dashboard, console and doors Walnut wood/leather multi-function steering wheel Not available in conjunction with Touareg Individual package	- O -	O S O	O S O	O S O	- - -
Leather upholstery Cricket leather package includes 12-way electric adjustment with individually heated front seats and heated washer nozzles Napa leather	O -	S O	S O	- S	- S
Metallic/Pearl Effect paint	O	O	O	O	S
Rear seat DVD entertainment system, roof mounted 7" colour screen with headsets (2) and remote control Not available in conjunction with electric glass slide/tilt sunroof. Only available in conjunction with rear mounted alloy spare wheel or Tyre Mobility Set (without spare wheel)	O	O	O	O	O
Rear View Camera Plus with dynamic guidance lines Parking distance sensors, front and rear Not available in conjunction with rear alloy spare wheel. Only available in conjunction with Satellite Navigation	O	O	O	O	O
Roof rails with roof profile strips, Chrome	O	O	O	O	S
Satellite Navigation System (RNS510) High-resolution touch screen display in 16:9 format, 3D map views, integrated 30 GB hard drive and SD card slot, DVD drive for the playback of audio CD/MP3 and video DVD and 10 speakers. Large colour multi-function trip computer display Auxiliary input audio socket in front centre armrest storage compartment	O	O	O	O	O
Touareg Individual - Sienna 19 x 9" alloy wheels in Titanium Silver with 275/45 R19 tyres (4) and anti-theft wheel bolts - Two-colour combination Rodeo and Cricket leather upholstery with Volkswagen Individual logo on front head restraint - Macassar wood/brushed aluminium inserts in dashboard, console and doors (Black piano lacquer finish optional) - Roof rails with roof profile strips, Chrome - Door sill inlays in aluminium with 'Individual' nameplate - Volkswagen Individual Logo badges on front wheel guards - Carpet floor mats with matching colour edging	-	O	O	-	-
Tow bar rated to 3500kg braked towing capacity and 350kg down weight Tow bar tongue and tow ball Volkswagen Genuine Accessories sold separately	O	O	O	O	A

Technical Specifications

Engine	V6 FSI	R5 TDI	V6 TDI	V10 TDI	R50 V10 TDI
Type	6 cyl 'V' petrol	5 cyl inline turbo diesel	6 cyl 'V' turbo diesel	10 cyl 'V' bi-turbo diesel	10 cyl 'V' bi-turbo diesel
Installation	Front longitudinal	Front longitudinal	Front longitudinal	Front longitudinal	Front longitudinal
Cubic capacity, litres/cc	3.6/3597	2.5/2460	3.0/2967	5.0/4921	5.0/4921
Bore/stroke, mm	89.0/96.4	81.0/95.5	83.0/91.4	81.0/95.5	81.0/95.5
Max power, kW @ rpm	206 @ 6200	128 @ 3500	176 @ 4000-4400	230 @ 3750	258 @ 3500
Max torque, Nm @ rpm	360 @ 2500	400 @ 2250	550 @ 2250-2500	750 @ 2000	850 @ 2000
Compression ratio	12:1	19.5:1	17.0:1	18.5:1	18.5:1
Fuel system	Motronic MED 9.1 multi-point injection system	Bosch EDC 16 with unit injectors (Pumpe Düse)	Bosch EDC 16 Common rail	Bosch EDC 16 with unit injectors (Pumpe Düse)	Bosch EDC 16 with unit injectors (Pumpe Düse)
Ignition system	Electronic	Compression	Compression	Compression	Compression
Exhaust emission control	3-way catalytic converter, lambda probes	Exhaust gas recirculation, oxidation catalytic converter, lambda probes and diesel particulate filter	Exhaust gas recirculation, oxidation catalytic converter, lambda probes and diesel particulate filter	Exhaust gas recirculation, oxidation catalytic converter, lambda probes and diesel particulate filter	Exhaust gas recirculation, oxidation catalytic converter, lambda probes and diesel particulate filter
Emission level	EU IV	EU IV	EU IV	EU IV	EU IV
Fuel type (recommended)	Premium unleaded 98 RON	Diesel 51CZ	Diesel 51CZ	Diesel 51CZ	Diesel 51CZ

Transmission

4XMOTION four-wheel-drive

Gearbox	6 speed Tiptronic automatic with Dynamic Selection Program (DSP)				
Low range gear ratio	2.66	2.66	2.66	2.66	2.66

Performance

0 – 100km/h	8.6	11.6	8.3	7.4	6.8
-------------	-----	------	-----	-----	-----

Fuel consumption*

Combined, L/100km	13.3	10.4	9.9	12.6	12.6
CO ₂ emission g/km	317	275	262	333	333
Fuel tank capacity, litres	100	100	100	100	100

Running gear

Steering	Hydraulic power assisted rack & pinion steering				
Turning circle, m	11.6				
Brake systems	Anti-lock Braking System (ABSplus) with Electronic Brake-pressure Distribution (EBD), Brake Assist and Electronic Stabilisation Program (ESP)				

Brakes	
Front	Ventilated discs
Rear	Ventilated discs

Suspension	
Front axle	Double wishbones, aluminium upper control arms and steel triangulated lower wishbone. Anti-roll bar.
Rear axle	Double wishbones with two split forged aluminium upper control arms steel triangulated lower wishbones. Anti-roll bar. Lowered sports tuned suspension with driving dynamics package and adaptive roll compensation (R50)

Running gear

V10 TDI (Optional V6 FSI and V6 TDI)

R50

Air suspension with Continuous Damping Control (CDC)	3 damper settings: Automatic, Sport [^] and Comfort Variable ride height: Loading level 160mm Road level 215mm Extra level 300mm Off-road level 220mm	3 damper settings: Automatic, Sport [^] and Comfort Variable ride height: Loading level 140mm Road level 195mm Off-road level 240mm Extra level 280mm
	[^] Suspension height is automatically reduced to 195mm.	[^] Suspension height is automatically reduced to 175mm.

*Fuel consumption figures according to Australian Design Rule (ADR) 81/01.

The driving style, road and traffic conditions, environmental influences and vehicle condition can in practice lead to consumption figures which may differ from those calculated with these standards.

Technical Specifications continued

Weights	V6 FSI	R5 TDI	V6 TDI	V10 TDI	R50 V10 TDI
Tare weight kg	2168	2197	2251	2532	2532
Towing capacity kg					
braked	3500	3500	3500	3500	3500
unbraked	750	750	750	750	750
Towbar load limit kg	350	350	350	350	350
Max. roof load kg	100	100	100	100	100

Dimensions

Exterior Dimensions	V6 FSI	R5 TDI	V6 TDI	V10 TDI	R50 V10 TDI
Overall length mm	4754	4754	4754	4754	4754
Width mm	1928	1928	1928	1928	1977
Height mm [#]	1726 (1703)	1726	1726 (1703)	(1703)	(1778)
Wheelbase mm	2855	2855	2855	2855	2855
Track mm					
front	1649	1649	1649	1645	NA
rear	1661	1661	1661	1657	NA

Interior Dimensions

Headroom, mm					
front	1008	1008	1008	1008	1008
rear	987	987	987	987	987
Leg room, mm					
front	1057	1057	1057	1057	1057
rear	898	898	898	898	898
Elbow room, mm					
front	1504	1504	1504	1504	1504
rear	1505	1505	1505	1505	1505
Luggage area volume, L					
rear seat upright	555	555	555	500	500
rear seat folded	1570	1570	1570	1525	1525
Luggage area floor length, mm					
rear seat upright	982	982	982	982	982
rear seat folded	1671	1671	1678	1678	1678
Luggage area height, mm	945	945	945	929	929
Luggage area width, mm	1160	1160	1160	1160	1160
Width between wheel arches, mm	1160	1160	1160	1160	1160

Off-road Dimensions

	Steel Spring Suspension	Air Suspension	Air Suspension
Approach angle	28.4°	33.2°	NA
Departure angle	28.1°	33.6°	NA
Break over/Ramp angle	22.1°	27.2°	NA
Ground clearance	237mm	160-300mm	140mm-280mm
Wading depth	500mm	580mm	560mm
Diagonal pitching	157mm	173mm	NA
Climbing ability	45°/100%	45°/100%	NA
Lateral slope angle	35°/70%	35°/70%	NA

[#] Figures in brackets relate to vehicles equipped with air suspension. NA = Information was not available at time of printing.

Colours, Interiors and Upholstery

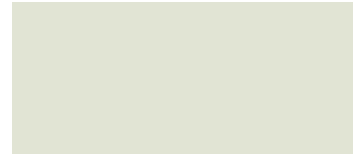
Colours



Silver Leaf Metallic



Black Magic Pearl Effect



Campanella White#



Shadow Blue Metallic



Reflex Silver Metallic



Atacama Grey Metallic



Galapagos Anthracite Metallic



Biscay Blue Pearl Effect

Biscay Blue Pearl Effect available with the R50 only.

Silver Leaf Metallic, Shadow Blue Metallic, Galapagos Anthracite Metallic and Atacama Grey Metallic are not available for the R50.

Please note: Please note Metallic (M) and Pearl Effect (PE) paint are optional at extra cost, excluding R50. For further details, please contact your Volkswagen Dealer.
Campanella White is only available for R50 in combination with the optional electric glass sunroof at additional cost.

Upholstery

Trail Cloth



Anthracite



Cricket Leather



Anthracite



Sioux



Beige



Napa Leather



Anthracite



Sioux



Beige



Key

● Standard R5 TDI

● Standard V6 FSI and V6 TDI

■ Standard V10 TDI

■ Standard R50

○ Optional R5 TDI

○ Optional V6 FSI and V6 TDI

□ Optional V10 TDI

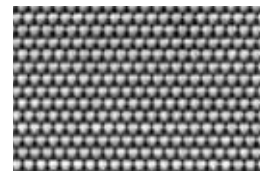
Interior Trims



Charcoal Grey Metallic Trim



Walnut Wood Trim



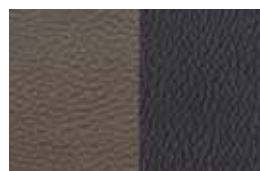
Engine Spin Trim



Volkswagen Black Piano Laquer



Volkswagen Macassar Wood



Bark Brown/Anthracite



Dakota/Anthracite



Touareg Individual Package



Owning a Volkswagen

Volkswagen New Vehicle Warranty

Every new Volkswagen passenger vehicle is covered by a 3-year/100,000km (whichever occurs first manufacturer's warranty, which includes Volkswagen Assist (24hr roadside assistance). Every new Volkswagen passenger vehicle is also covered by a 3-year paintwork and 12 year anti-corrosion perforation warranty.

Volkswagen Assist – 24 hour Roadside Assistance

As a valued customer, you can be assured that wherever you travel within Australia, you will have access to roadside assistance, 24 hours a day, 365 days a year. This is complimentary for the duration of the vehicle's original Volkswagen warranty period. You will receive help in the event of a breakdown or accident and if required, your vehicle will be mobilised or transported to an Authorised Volkswagen Repair Centre. As a Volkswagen owner you will also have access to the additional benefits of accommodation and car rental if your vehicle cannot be mobilised within 24 hours, when you are over 100kms away from home. Volkswagen Roadside Assist can also be renewed at the expiry of the original warranty, ensuring ongoing coverage for your vehicle.

Volkswagen Extended Warranty

Why not continue the confidence of a Volkswagen Warranty by purchasing Volkswagen Confidence Plus – an Insurance Policy designed to provide cover for the repair or replacement of a failed mechanical or electrical part, after the expiration of the Volkswagen standard new vehicle warranty. Volkswagen Confidence Plus is available for an additional period of 12 or 24 months unlimited kms. In addition, Volkswagen Confidence Plus includes the continuation of your Volkswagen Assist, our 24-hour roadside assistance program. You can purchase Volkswagen Confidence Plus at any time within your Volkswagen standard new vehicle warranty (3-year/100,000km). For more information contact your participating local dealer or visit volkswagen.com.au

Volkswagen Service

Your Authorised Volkswagen Service Centre is part of Volkswagen's global Quality Management System, ensuring all dealers are certified to ISO 9001:2000 – an internationally recognised Quality Standard. Authorised Volkswagen Service Centres have factory trained Technicians equipped with the very latest diagnostic equipment, specialist tooling and Volkswagen Genuine Parts. An Authorised Volkswagen Service Centre undertakes work in accordance to factory specified guidelines and maintenance schedules.

Volkswagen Genuine Parts®

Volkswagen Genuine Parts® are designed for your vehicle and approved by Volkswagen, with particular regard to safety. The workmanship, dimensional accuracy and materials used in these parts comply with factory specifications. To ensure safety and reliability, Volkswagen recommends the use of Volkswagen Genuine Parts®. Volkswagen Authorised Dealers offer a 2-year warranty on Genuine Parts from the date of purchase.

Volkswagen Finance

Buying, Borrowing or Leasing, Volkswagen Finance will certainly make you think differently about financing and insuring your new Volkswagen. Committed to meeting the needs of Volkswagen drivers, across Australia, we offer a range of leasing, financing and insurance products, each with distinct advantages depending on your specific circumstances. Our packages are personalised to suit your individual requirements. You design your plan so that it meets your budgeting needs and can rest assured that there will be no surprises along the way. Speak to your local participating Volkswagen Dealer today to put together a financial solution that best suits your lifestyle.

Glossary

4XMOTION

The power of the Touareg engine is transmitted to the wheels via the continuous 4XMOTION four-wheel drive system. This flow of power is handled by a transfer gearbox, which includes off-road reduction. The 4XMOTION system also includes a locking central differential.

In normal situations - dry road, even grip, constant engine power - the four-wheel drive is distinguished by a symmetrical, 50:50 distribution of power to the front and rear axles. But as soon as a wheel begins to slip, the multi-disc lock of the central differential increases the flow of power (up to 100%) to one axle in order to provide more grip. A four-wheel EDL (Electronic Differential Lock via braking) also supports this adjusted power distribution.

Anti-lock Braking System (ABSplus)

When braking, wheel speed sensors measure the road wheel speed and should one or more wheels start to lock the ABSplus system reduces brake pressure to that wheel. This prevents the wheels from locking during heavy or emergency braking, enabling the vehicle to remain steerable. If loose surfaces are registered, wheel lock is controlled to significantly shorten braking distances in off-road conditions.

Electronic Brake-pressure Distribution (EBD)

Electronic, more sophisticated means of regulating the ratio of front/rear brake pressure. Settings are varied according to driving and load conditions to ensure each wheel is braked to the optimum extent.

Brake Assist

During emergency braking, Brake assist aids the driver by increasing the brake pressure automatically to a level exceeding the locking limit. The ABS is thus quickly brought into the operating range, which enables maximum vehicle deceleration to be achieved.

Electronic Differential Lock (EDL)

EDL improves driving and steering characteristics when accelerating on road surfaces where each wheel has a different degree of traction. The system operates automatically and is combined with the ABS system. Using the ABS wheel sensors, EDL monitors the speed of the individual driving wheels. When a difference in driving wheel speed is detected (i.e. when one wheel starts to spin due to differences in road surfaces, e.g. due to water or dirt) the system brakes the spinning wheel, transferring engine power to the wheel with the best traction. EDL is active on both axles in forward and reverse and operates up to 40km/h.

Anti-Slip Regulation (ASR)

ASR is a switchable traction control system that prevents the wheels from spinning under acceleration by reducing engine torque. It is active at speeds above 40km/h.

Electronic Stabilisation Program (ESP)

ABS, EDL and ASR traction control systems are integrated into the Electronic Stabilisation Program (ESP). In short, ESP helps ensure that the vehicle goes where you steer it even in extreme driving conditions. The ESP system constantly compares the actual movement of the vehicle with pre-determined values and should a situation arise where the vehicle starts to skid, ESP will apply the brakes to individual wheels and automatically adjust the engine's power output to correct the problem. ESP prevents the vehicle from losing control when trying to avoid an accident, for example. It also prevents spinning off on a curve due to either understeer or oversteer.

Engine Braking Control (EBC)

Prevents the driven wheels from locking if the accelerator is lifted very suddenly or the vehicle is braked sharply because a low gear is engaged.

Hill descent assistance

Ensures by means of controlled brake applications that the vehicle does not go out of control when descending a steep hill. Hill descent assistance will only operate in low range.

Hill holding assistance

The hill holding assistance comes into affect when stationary on steep inclines, utilising the transmission as necessary to prevent the vehicle rolling back.

Volkswagen is distributed by Volkswagen Group Australia Pty Ltd, The Lakes Business Park, 6 Lord Street, Botany, NSW 2019. ABN 14 093 117 876. Specifications are as planned at May 2008, for Model Year 2009 and are subject to change without notice or obligation. Cars and accessories shown may not depict Australian specifications. Fuel consumption figures according to Australian Design Rules (ADR) 81/01. All Volkswagen approved parts and accessories are warranted for 2 years/unlimited kilometres. All information in this brochure is correct at the time of publication, however variations may occur from time to time and Volkswagen, in so far as it is permitted by law to do so, shall not be liable in any way as a result of any reliance by any person on anything contained in this brochure. The colours shown in this brochure are indicative only and may vary from actual items owing to the printing process. Authorised Volkswagen dealers will provide up-to-date information on model application, design feature, prices and availability on request.

Volkswagen Insurance & Volkswagen Extended Warranty are provided by Allianz Australia Insurance Limited (Allianz), AFS Licence No. 234708, ABN 15 000 122 580. In arranging this insurance Volkswagen Financial Services Australia Limited, ABN 20 097 071 460 & Volkswagen Group Australia Pty Ltd, ABN 14 093 117 896 and the authorised dealers act as agents of Allianz and not as your agent. Volkswagen Finance is a trading name of Volkswagen Financial Services Australia Limited. Locked Bag 5009, Alexandria NSW 2015. Tel: 02 9695 6311.



Das Auto.

Volkswagen Touareg

Publication: VGA1017G

Internet: www.volkswagen.com.au