



**Das Auto.**

## **Volkswagen Golf**





Overseas specification vehicles are shown in this brochure.  
Some features and options may not be available in Australia.

## **The New Generation Golf.**

Distinctive design gives the new Golf an immediate appeal. The interior speaks of comfort and quality, outstanding safety features abound and there is, of course, the precision of Volkswagen's fuel efficient engines and transmissions.

The new Golf is destined to build upon the legendary reputation for which Volkswagen – and the award winning Golf – have become famous.



## The Golf philosophy.

You don't create one of the world's favourite cars by thinking like everyone else, and never has the Volkswagen approach of 'thinking differently' been more evident than it is in the new generation Golf. Sometimes when you have set the benchmark, the only one you have to beat is yourself.

This iconic car has evolved to new levels of quality, design and comfort. Innovative safety features, subtle yet luxurious refinement and genuine value are brilliantly combined.

The Golf is renowned for innovation, and what better example of this is there than the laminated windscreen that cuts wind and engine noise? It is this calibre of class leading technology that ensures the quietest of rides. After all, Volkswagen's German engineers have always understood that when it comes to quality and innovation, little things can make a big difference.

One of those little things is Volkswagen's advanced manufacturing technique using only the highest quality materials enabling the Golf to offer a 12 year anti-corrosion perforation warranty.



## Design.

Simple, but simply superb: that is the new Golf.

With its clear architecture, precise lines and meticulously crafted surfaces, the new generation Golf has been engineered to take a modern icon of vehicle design to the next level. Simplicity was the guiding design principle and the key to the latest Golf's uncomplicated yet engaging contours.

Due esteem has been paid to the vehicle's stellar heritage, with the latest generation Golf incorporating the aesthetic cornerstones that have been winning the hearts and minds of drivers for more than three decades. The signature long roof, steep rear end and wide C-pillar are evident and the wide rear tail-lights also convey the familiar, compact character that distinguishes this vehicle as a Golf.

From that well loved shape, the new Golf has evolved. Side on, a distinctive contoured character line emerges

from the front wheel arch, sharpening toward the rear to form a muscular back end. Front on, the slim-line radiator grille, broad, sleek lower air intake and upward angled headlights convey a clearly defined, sophisticated design. Redesigned exterior side mirrors achieve improved aerodynamics to reduce exterior noise.

It is not just the Golf's exterior, however, that displays the classic German engineering you have come to expect from Volkswagen. Noise reduction measures have been meticulously researched and implemented to produce the quietest Golf ever. Then there is the new, high-tech windscreen: made from two layers of glass bonded together with a tough, transparent plastic film. The thick, rigid pane not only dissipates wind noise but also dampens engine sound in the passenger compartment, while a thin insulating layer reduces vibration. Such features have previously been available only in luxury cars, yet the Golf ushers in progressive materials and innovations to the small car segment.





01

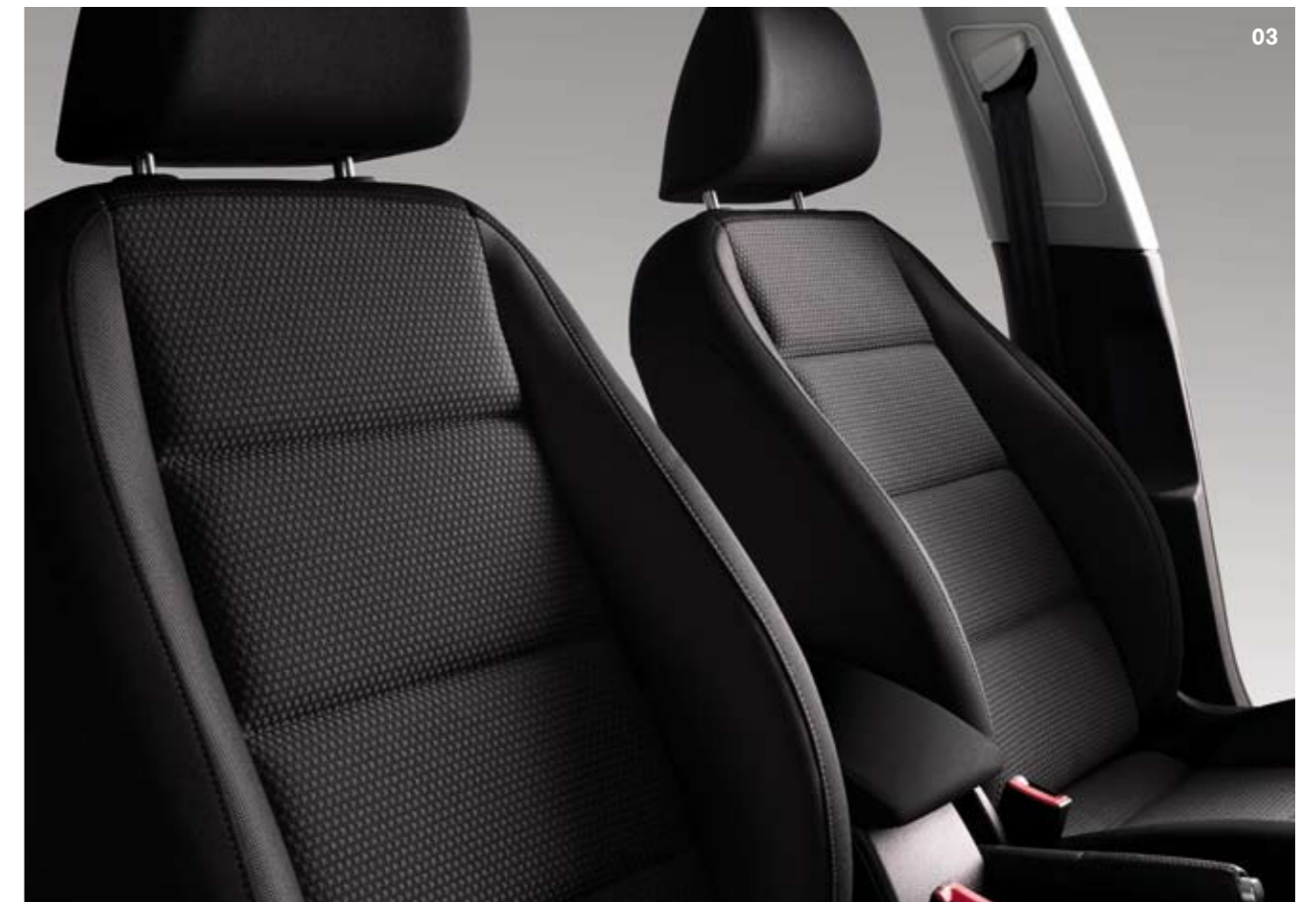
## Interior.

The classless yet classic style of the Golf is as evident on the inside as it is on the outside. The impressive interior consists of high quality materials and finishes that convey an ambience of prestige. Slip behind the redesigned, sculptural 3-spoke steering wheel and into the height adjustable, premium quality driver's seat and you'll discover an array of creature comforts that make every drive pleasurable.

The newly designed interior, boasting surfaces and features that are refined both to the touch and visually, conveys the Golf's exceptionally high value through a greater sense of quality. Smooth and harmonious forms, the layout and finish of its carefully selected materials and instrumentation leave a luxurious impression.



02

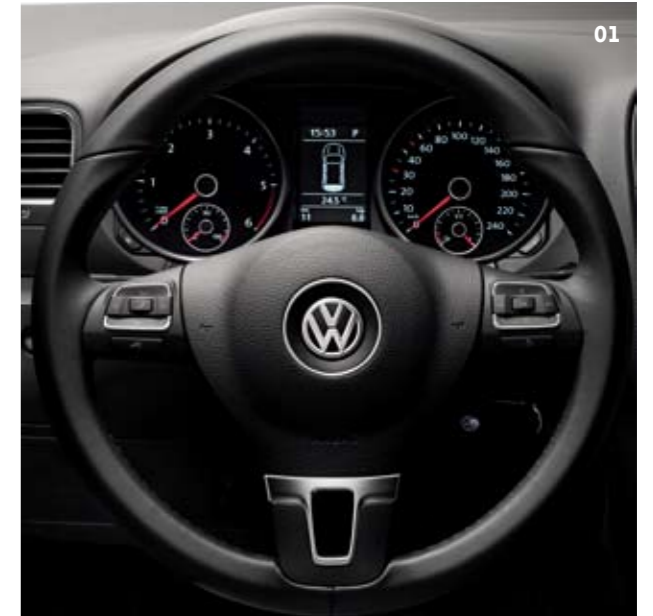


03

**01** The newly designed interior conveys the Golf's exceptionally high value through a greater sense of quality.

**02** Window controls are positioned further forward and angled towards passengers for easier access.

**03** Comfortable seats are upholstered in durable materials.



## Interior.

The sophisticated interior is impressive for its particularly well thought out design. Interior ergonomics have been further developed. For example, window controls located on the doors are positioned further forward and angled towards passengers for easier access. Striking features are the flowing lines that connect the dashboard to the centre console. In the choice of material quality and surface design, great attention was paid to the tactile quality – after all, good design should also feel good.

The new generation Golf achieves an unexpected level of refinement thanks to the sum of its impressive attributes. Highlights include height and reach adjustable steering, a Multi-Function Display (MFD Plus), power windows front and rear, remote central locking and electro-mechanical power steering. New white illumination in the newly designed instrument cluster is aesthetically pleasing and easier to read in a variety of lighting conditions.

The superbly quiet cabin can be a tranquil place or the perfect venue for turning up the RCD310 audio system – creating a high quality audio experience in every seat. An auxiliary audio input socket for MP3 compatibility can be found in the centre console.

An illuminated, chillable and lockable glove box is a feature bound to win drivers over on hot summer days. Add the convenience of a 60-40 split/folding rear seat and

intelligent storage spaces like a compartment in the roof lining, and soon you'll understand why the Golf adds up to interior flexibility. In the sum of its details, the new generation Golf exudes design precision in every aspect and combines emotional perception with actual quality, resulting in an exhilarating driving experience.

Leather upholstery shown is an optional extra.

**01** New white illumination emanates from behind the newly designed steering wheel.

**02** The quality of materials and surface design boast a tactile quality.



01

### Safety.

It's reassuring to know that a vehicle has been designed with safety as a priority – and Volkswagen has been at the forefront of developments in vehicle safety for decades. Attention to safety was critical in the new generation Golf's design and development, and the proof is in the results of independent international testing. In rigorous Euro NCAP crash rating tests, the Golf achieved the best possible 5 star safety rating.

The Anti-lock Braking System (ABS) and Anti Slip Regulation (ASR) traction control systems are integrated into the

Golf's Electronic Stabilisation Program (ESP). Simply, ESP helps ensure that the vehicle goes where you steer it, even in extreme driving conditions. The ESP system constantly compares the actual movement of the vehicle with carefully pre-determined values. Should a situation arise in which the vehicle starts to skid, ESP will apply the brakes to individual wheels and automatically adjust the engine's power output to correct the problem. It also minimises the likelihood of spinning off on a curve due to understeering or oversteering. Additionally, Electronic Brake-pressure Distribution (EBD) regulates the brake pressure ratio

between the front and rear, while Brake Assist automatically increases brake pressure during emergency braking.

Front and rear crumple zones absorb the energy of an impact and divert the resulting forces away from the secure passenger safety cell. Every occupant is protected by 3-point seat belts and head restraints. Three head restraints and three child restraint anchor points can be found in the rear. All Golf models feature seven airbags – front, front side and front and rear curtain airbags. Crucially, an airbag is dedicated to protect the driver's knees so that in the event of a crash, the resulting forces are distributed more evenly and less stress is transferred to the body.

The new generation Golf is equipped with the CISS (Crash Impact Sound Sensing) sensor for the first time. This remarkable innovation detects the sound frequencies of noises typically heard during a crash, cross-checks them against deceleration sensors, and activates the airbags and seatbelt pre-tensioners in above average time. The hundredths of seconds it saves can be crucial in a crash situation. CISS is also perceptive in recognising minor accidents, so that airbags won't unnecessarily deploy.



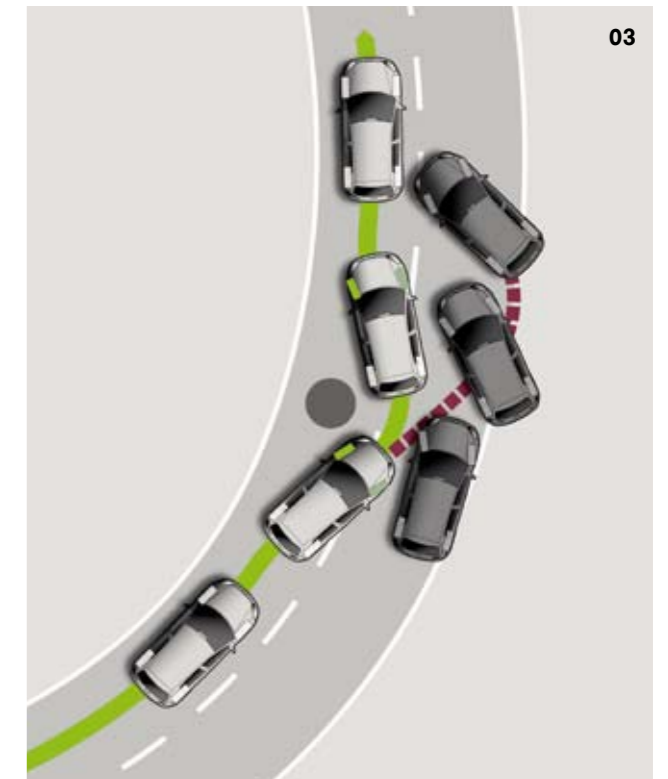
\* Award source: Volkswagen Golf awarded "5 stars" by independent European motor vehicle safety assessment organisation Euro NCAP (European New Car Assessment Programme) during Euro NCAP testing, 2008)



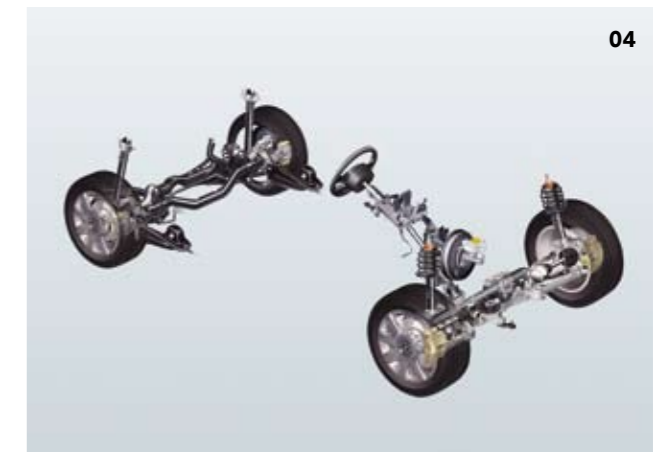
02

- 01 All Golf models feature seven airbags – including a driver's knee airbag.
- 02 ABS prevents the wheels from locking during heavy braking, enabling the driver to maintain steering control and maximising braking efficiency.
- 03 ESP brakes individual wheels and automatically adjusts power output to correct skidding problems. It also minimises understeering or oversteering on a curve.
- 04 Every Golf benefits from the precision of electro-mechanical power steering.
- 05 Redesigned safety optimised head restraints help to reduce whiplash injuries. Leather upholstery shown is an optional extra.

Another significant safety development for the new Golf are redesigned safety optimised head restraints. These combined with new enhanced seatback contours, help to reduce whiplash injuries.



03



04



05



## The Golf range.

When it comes to performance, Volkswagen has long been proud of its range providing the most agile, stable, efficient, comfortable and safest drive achievable. The new generation Golf continues this tradition, utilising innovative technology to present a range of superbly engineered, high performance yet efficient models. Safety remains a priority: every Golf benefits from Electronic Stabilisation Program (ESP), seven airbags as standard and a reassuring 5 star safety rating awarded by Euro NCAP\*.

The 90TSI Trendline is powered by a single-charged 1.4 litre TSI engine. The 118TSI Comfortline's 1.4 litre TSI engine is supercharged and turbocharged.

### TSI Technology. A miracle of performance.

TSI is Volkswagen's twin or single-charged petrol engines with direct injection. TSI combines FSI direct injection petrol technology with turbocharging. This innovative engineering has created high tech engines boasting excellent torque and power output at low revolutions, combined with lower fuel consumption and emissions. The Golf TSI engine is an innovative 1.4 litre unit that

\*Award source: Volkswagen Golf awarded "5 stars" by independent European motor vehicle safety assessment organisation Euro NCAP (European New Car Assessment Programme) during Euro NCAP testing, 2008.

saves petrol while delivering impressive power and performance thanks to the turbocharger and direct petrol injection. From the driver's seat, all you feel is one continuous, exhilarating surge as it produces high torque at low revs and an abundance of power. You can continue driving all day because, if there's one thing the TSI engine hates, it's petrol stations. It's as economical as many engines with half as much power.

The fuel efficiency of a diesel engine is available in the Golf 103TDI Comfortline, equipped with a 2.0 litre TDI engine with common rail fuel injection and Diesel

Particulate Filter, with a 6-speed manual or the option of a 6-speed DSG transmission.

Volkswagen engineers have made significant fuel consumption reductions in both petrol and diesel engines. As a result, all of the Golf's petrol and diesel engine variants meet tough new Euro V emissions standards, with reduced fuel consumption and improved CO<sub>2</sub> footprints. Selected models also feature Volkswagen's innovative new 7-speed Direct Shift Gearbox (DSG) transmission.





- 01 Trendline seats are upholstered in 'Roxy' design cloth.
- 02 The RCD310 in-car entertainment system is standard for Trendline and Comfortline. It features a single disc CD player with MP3/WMA compatibility and an AUX-IN interface for connecting a mobile audio player.

## 90TSI Trendline.

With its 'Roxy' design cloth upholstery and titanium decorative inlays, the Golf Trendline combines impressive value with a luxury look and feel. The splendid interior boasts semi-automatic air conditioning, RCD310 entertainment system with MP3 compatibility, as well as a Multi-Function Display (MFD). Comfort hasn't been overlooked with front and rear power windows, 60/40 split-folding rear seats, plus a front centre arm rest with storage box and rear air vents.

Functionality is superb with a height and reach adjustable steering column plus an illuminated, chillable and

lockable glove box. The power door mirrors are heated to make demisting quick on cold winter mornings, while drivers will appreciate electro-mechanical power steering and remote central locking. An intuitive feature is the warning buzzer and light to inform the driver when the front seatbelts are not fastened. Halogen headlights with daytime driving lights and integrated turn signals provide clear illumination.

The 90TSI Trendline has a single-charged 1.4 litre TSI petrol engine, with four valves per cylinder for greater fuel efficiency and contra-rotating balancing shafts for

even quieter operation. With 90kW of power and 200Nm of torque, the 90TSI comes with the choice of a 6-speed manual or optional 7-speed DSG transmission with reduced CO<sub>2</sub> emissions.

### RCD310 entertainment system.

The RCD310 in-car entertainment system features a large display, a single disc CD player with MP3/WMA compatibility, as well as an AUX-IN interface for connecting a mobile audio player. This is standard for Trendline and Comfortline.

### Hill Start Assist (HSA) – available for vehicles equipped with a Direct Shift Gearbox (DSG).

Hill Start Assist (HSA) holds the vehicle stationary for 1.5 seconds on hills with an incline greater than 5 degrees, when the foot brake is released by temporarily locking the brake pressure. This intelligent feature provides a comfortable hill start, which importantly avoids any rolling back.



- 01** The innovative rear seat centre armrest that creates a load-through facility when folded down.
- 02** Stylish 16" Cleveland alloy wheels are standard on the 118TSI and 103TDI Comfortline model variants.
- 03** Comfortline models offer dual zone automatic climate control air conditioning for maximum comfort.

## 118TSI Comfortline.

All of the winning characteristics of Golf – and an extra touch of class – come together in the Comfortline. The interior exudes finesse, with height and lumbar adjustable comfort front seats in 'Scout/Merlin' design cloth upholstery, 'Black Pyramid' decorative inlays, Multi-Function Display (MFD Plus) and a multi-function leather steering wheel. Luxurious comfort comes from dual zone automatic climate control air conditioning and an automatically dimming rear view mirror.

Special touches include rain-sensing windscreen wipers, and automatic headlights with daytime driving lights and 'coming/leaving home' function. Intelligent design is demonstrated by a handy storage compartment with a flap in the front headlining, plus

the luggage compartment boasts shopping bag hooks, a 12V power socket, and lining with left and right storage functionality. The Comfortline's flexible interior also benefits from an innovative rear seat centre armrest that creates a load-through facility when folded down. The Comfortline's exterior highlights include 16" Cleveland alloy wheels and striking chrome inserts in the radiator grille.

The 118TSI has a supercharged and turbocharged 1.4 litre TSI engine for powerful yet frugal performance. With 118kW of power and 240Nm of torque, the 118TSI offers lower fuel consumption and emissions. It comes with the choice of a 6-speed manual or optional 7-speed DSG transmission.

## 7-Speed Direct Shift Gearbox (DSG).

Volkswagen's 7-speed Direct Shift Gearbox (DSG) features an electronically controlled clutch and gearshift. It is the first 7-speed gearbox in the world with front transverse mounting. It is also the first dual-clutch gearbox in the world designed with a 'dry' hydraulically controlled dual-clutch, which uses considerably less lubricant. No lubricant is needed to cool the clutch – it's only needed for the gearing and bearings. A significantly higher efficiency rating facilitates lower fuel consumption. Precise timing between the two clutches results in optimal driving comfort with almost no interruption to power, traction or acceleration, and additional flexibility.

The innovative 7-gear configuration has been designed so the first gear has a shorter range. This improves the start-up behaviour considerably. With closer gearbox stages and overdrive, the seventh gear with its large transmission ratio saves significantly more fuel – and therefore reduces the emission of CO<sub>2</sub>. Furthermore, because it ensures optimum transmission of the engine power, DSG provides excellent fuel consumption and driving satisfaction. Another advantage is that the vehicle runs even more quietly. Hill Start Assist is available on all models with equipped DSG.



Wheels shown not available in Australia.

## 103TDI Comfortline.

The efficiency of a diesel engine is combined with all the class and features of Golf Comfortline in the 103TDI. Along with exceptional performance, the 103TDI has the same stunning interior and special touches that are set to become hallmarks of the Comfortline.

The 103TDI has a common rail 2.0 litre TDI engine with Diesel Particulate Filter to deliver a smoother, quieter and more efficient engine. With 103kW of power and an enormous 320Nm of torque that can compete with many

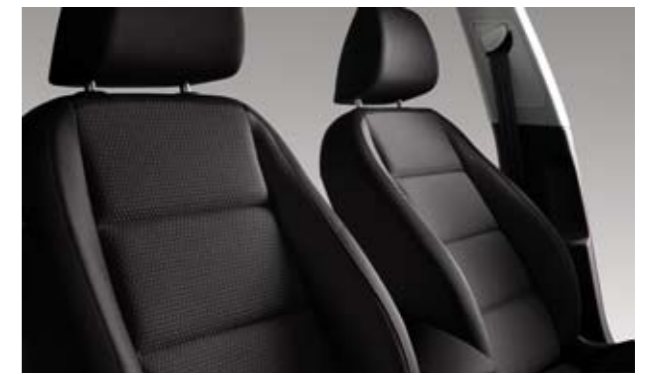
V6 petrol engines, the 2.0 litre TDI engine delivers an exhilarating drive. The 103TDI comes with the choice of a 6-speed manual or optional 6-speed DSG transmission.

### **TDI Performance.**

Volkswagen's cutting-edge turbo diesel (TDI) engines with Diesel Particulate Filters feature Common Rail technology – injecting precise amounts of fuel at exceedingly high pressure. The result is a cleaner burning engine with exceptional fuel economy,

impressive torque and compelling performance. Smooth and silent, the 2.0 TDI boasts fuel consumption of just 5.3L/100km\* making trips of 1,000km possible on a single tank. From an environmental perspective, the clean burning 2.0 TDI meets the stringent Euro V emissions standards.

\*6-speed manual, combined city/highway driving as per Australian Standard ADR 81/02.



### **6-Speed Direct Shift Gearbox (DSG).**

6-Speed DSG is a 6-speed gearbox with an electronically controlled clutch and gearshift. The DSG technology uniquely pre-selects the next gear in advance, ready for the power to be switched, resulting in lightning fast gear changes in a mere 3-4/100ths of a second. This gives virtually uninterrupted power, traction and acceleration, and ensures maximum engine power with impressive fuel economy and driving pleasure. Hill Start Assist is available on all models equipped with DSG.



## Optional equipment.

### 01. Adaptive chassis control.

Adaptive chassis control electronically adjusts the damper characteristics for each wheel, ensuring optimum driving comfort for any road surface or driving situation. It achieves the optimum balance between driving comfort and driving dynamics, based on a newly developed control algorithm.

Adaptive chassis control uses wheel movement sensors and body acceleration sensors to determine the positions and speeds of the wheels and the motion of the chassis, then adjusts the damping for each wheel individually every millisecond. It makes its judgements based on the analysis of signals from the steering, engine, gearbox, brake system and driver assistance systems.

By selecting Normal, Sport or Comfort modes, the change in damper controls adapts the electro-mechanical steering

system from comfort-oriented to a firmer, sportier characteristic. In Sport mode, the dampers suppress rolling and pitching motion to achieve sporty, dynamic handling and more direct steering. In Comfort mode, ride quality is more like that you'd experience in a luxury limousine, especially when driving on poor road surfaces at slow speeds.



### 02. RNS510 Satellite Navigation System.

Stay on track with the RNS510 Satellite Navigation System. A user-friendly touch sensitive screen with a high resolution display shows maps, pictures and video. This unique system calculates your travel route with incredible speed. With a generous 30GB hard drive and built-in DVD drive, your music library and navigation data is always at your fingertips. Your favourite music can also be accessed via an MP3 compatible AUX-IN multimedia socket or SD memory card slot.

### 03. Optical Parking System (OPS).

The Optical Parking System (included with optional Park Assist with parking sensors) takes the parking aid/parking sensor concept to a new level. A silhouette of the Golf is displayed on the radio or navigation system screen during parking, showing the Golf's position and distance from

obstacles. Any obstacle within range of the ultrasonic sensors is shown on screen.

### 04. Rear View Camera (RVC).

This brilliant piece of technology is tucked cleverly inside the rear Volkswagen logo – which also ingeniously opens the boot. The Rear View Camera (RVC) provides another dimension of rear ground visibility and safety. Even the trickiest parking spot becomes a breeze. When reverse gear is engaged, the Volkswagen logo tilts to reveal the camera, providing the driver with a clear view of what's behind the vehicle. On-screen guidance lines assist entry into difficult parking spaces.



### Optional equipment (continued).

**05. Park Assist with front and rear parking sensors.**  
The Park Assist feature acts like an extra set of eyes and an expert pair of hands, with parking distance sensors front and rear. With this technology at hand, reverse parking has never been so easy.

When driving past a parking space at up to 30 km/h, ultrasonic sensors compare the available space with the length of the vehicle. If there's enough room to park, Park Assist automatically takes charge of the steering when you select reverse gear. The accelerator, clutch and brake are all you need to control as the Golf is expertly parked for you. Naturally, the driver is fully responsible for monitoring the speed of the vehicle and the distance between it and other vehicles, even when the Park Assist system is operating.



**06. DYNAUDIO Excite 300W premium audio system.**  
Perfectly refined audio ambience evenly distributed throughout your Golf – now that's stimulating.

The DYNAUDIO Excite premium audio system incorporates an 8 channel digital amplifier delivering 300 watts through high performance speakers. With DYNAUDIO Excite comes the RCD510 in-car entertainment system featuring a high resolution colour TFT display with touch screen operation, six disc CD changer with MP3/WMA compatibility, AUX-IN interface for connecting a mobile audio player, eight speakers as well as an SD/MMC memory card slot.

**07. Media Device Interface (MDI).**  
This sophisticated new interface facilitates connection to USB audio devices, data storage devices and Apple iPod. The MDI allows audio files to be operated via the in-dash audio system without the need to input controls via the media device itself. The MDI system also provides a charging function.

**08. Sunroof.**  
The optional electric glass sunroof is slide and tilt adjustable with sunblind and is available across the Golf range.

The discerning Golf driver also has the options of Vienna leather upholstery (Comfortline only) and alarm system.

## Optional Comfort Package available for Trendline.

Golf Trendline offers an optional Comfort Package comprising stylish features to add panache and personality to your vehicle. The Comfort Package features cruise control, 15" Wellington alloy wheels, and a multi-function leather steering wheel, leather handbrake lever and leather gearshift knob.

- 01 Multi-function leather steering wheel.
- 02 Multi-function Display (MFD Plus).
- 03 15" Wellington alloy wheels.
- 04 Dual zone climate control air conditioning.
- 05 Automatic headlights with coming/leaving home function.

Innovative creature comforts include dual zone climate control air conditioning, Multi-Function Display (MFD Plus) and an automatically dimming rear view mirror. Impressive, intuitive features include rain-sensing windscreen wipers, automatic headlights, and coming/leaving home function.



## Optional Sport Package available for Comfortline.

Golf Comfortline models offer an optional Sport Package for an extra touch of style and sports inspired finesse. The Sport Package includes 17" Seattle alloy wheels, sports suspension, sports seats and dark tinted rear side and rear windows. The package also features a low tyre pressure indicator and front fog lights with static cornering functionality.

- 01 Sports seats with optional leather upholstery.
- 02 Sports suspension.
- 03 17" Seattle alloy wheels.
- 04 Dark tinted rear side and rear windows.
- 05 Front fog lights with static cornering function.

sports seats and dark tinted rear side and rear windows. The package also features a low tyre pressure indicator and front fog lights with static cornering functionality.



## Volkswagen Genuine Accessories.

Movement fascinates. In fact, there are few subjects that excite people more, that's because movement is synonymous with freedom. Our comprehensive range of genuine accessories give you the freedom to customise the look and feel of your vehicle to reflect your own personality and individual sense of style.

The product philosophy is simple – to deliver innovative technologies and premium design – right down to the finest detail. Each and every genuine accessory has been designed specifically with the New Golf in mind and has been engineered and rigorously tested to ensure that it meets the same high standards of quality as the vehicle itself.

No matter what you choose you can have peace of mind knowing that any genuine accessory fitted by your local Volkswagen Dealer, at the time of your vehicle purchase will be covered by the same warranty as the vehicle itself.

For more information or to experience the full range of genuine accessories designed to suit the New Golf, visit your local Volkswagen Dealer.



Sports Body Kit



17" Onyx Alloy Wheel (silver)



18" Topas Alloy Wheel (silver)



18" Karthoum Alloy Wheel (Black and silver)



18" Vision Alloy Wheel (Black and silver)



Roof Bar Set and Bicycle Holder



Kayak Holder



Luggage Net



Rear Chrome Trim



RNS510



Ski and Luggage Box



Carpet Floor Mats



Boot Mat, Rubber



Door Sill Protective Strip



Media In



Ski and Snowboard Holder



Mudflaps



Cargo Organiser



Tow Bar Kit



Bluetooth Phone Kit

Images are for illustration purposes only. Overseas specification vehicles are shown. Bicycle, kayak, skis and snowboard not available for purchase from Volkswagen or its dealers.

## Specifications

	90TSI Trendline	118TSI Comfortline	103TDI Comfortline
<b>Safety and Security</b>			
<b>Airbags</b>			
Driver and front passenger airbags	S	S	S
Driver's knee airbag	S	S	S
Driver and front passenger side airbags	S	S	S
Curtain airbags, front and rear	S	S	S
<b>Anti-theft</b>			
Electronic engine immobiliser	S	S	S
<b>Body</b>			
Fully galvanised body with 12 year anti-corrosion perforation warranty	S	S	S
Door side impact protection	S	S	S
Rigid safety cell with front and rear crumple zones	S	S	S
<b>Brakes</b>			
Anti-lock Braking System (ABS)	S	S	S
Brake Assist	S	S	S
Electronic Brake-pressure Distribution (EBD)	S	S	S
Hill Start Assist (HSA) (with DSG)	S	S	S
<b>Child restraint</b>			
Child seat anchor points mounted on back of rear seat (3)	S	S	S
<b>Daytime driving lights</b>	S	S	S
<b>Entry/warning reflectors in front and rear doors</b>	S	S	S
<b>Fog lamp, rear</b>	S	S	S
<b>Head restraints</b>			
Front safety optimised head restraints, height adjustable	S	S	S
Rear head restraints height adjustable and removable (3)	S	S	S
<b>Locking</b>			
Remote central locking with deadlock mechanism	S	S	S
2 stage unlocking (programmable)	S	S	S
Automatic locking after takeoff (programmable)	S	S	S
One touch lock / unlock for driver	S	S	S
Child safety locks on rear doors	S	S	S
Fuel filler flap lock/unlock by remote, push to open	S	S	S
<b>Luggage cover, removable</b>	S	S	S
<b>Seat belts</b>			
Front height adjustable with pre-tensioners and belt force limiters	S	S	S
Visual and acoustic warning for driver and front seat passenger seat belts not fastened	S	S	S
3 point seat belts for all passengers	S	S	S
<b>Traction control</b>			
Anti-Slip Regulation (ASR)	S	S	S
Electronic Differential Lock (EDL)	S	S	S
Electronic Stabilisation Program (ESP)	S	S	S
<b>Exterior Equipment/Styling</b>			
<b>Body enhancements</b>			
Body coloured bumper bars, door handles and outer rear view mirrors	S	S	S
B pillar decorative strip, carbon look	A	A	A
Exposed dual exhaust tail pipes	S	S	S
Radiator grille highlights in chrome	–	S	S
Rear hatch trim, chrome	A	A	A
Sports body kit	A	A	A
<b>Protection</b>			
Bonnet protector	A	A	A
Headlight protectors	A	A	A
Loading sill protection, clear or stainless-steel	A	A	A
Mudflaps, front and rear	A	A	A
Slimline weather shields	A	A	A

## Specifications

	90TSI Trendline	118TSI Comfortline	103TDI Comfortline
<b>Exterior Equipment/Styling (continued)</b>			
<b>Roof</b>			
Bicycle, kayak, ski, surfboard and snowboard holders	A	A	A
Luggage rack	A	A	A
Roof bars	A	A	A
Ski and luggage box	A	A	A
<b>Tinted glass</b>			
Heat insulating tinted glass	S	S	S
<b>Tow bar</b>			
Towbar with 7-pin flat trailer connector and removable tongue	A	A	A
<b>Wheels</b>			
Steel wheels 15 x 6" with full wheel trims and 195/65 R15 tyres	S	–	–
Alloy wheels (Tangis) 15 x 6½"	A	A	A
Alloy wheels (Cleveland) 16 x 6½" with 205/55 R16 tyres	–	S	S
Alloy Wheels (Contour) 16 x 7"	A	A	A
Alloy Wheels (Namib) 16 x 7"	A	A	A
Alloy Wheels (Tangis) 16 x 7"	A	A	A
Alloy Wheels (Activa) 17 x 7"	A	A	A
Alloy wheels (Onyx) 17 x 7"	A	A	A
Alloy Wheels (Vision) 17 X 7"	A	A	A
Alloy Wheels (Exis STP) 17 x 7½"	A	A	A
Alloy Wheels (Topas) 18 x 7½"	A	A	A
Alloy Wheels (Karthoum) 18 x 8"	A	A	A
Alloy Wheels (Vision) 18 x 8"	A	A	A
Anti-theft wheel bolts	A	S	S
Weight and space saving spare wheel	S	S	S
<b>Comfort and Convenience</b>			
<b>Armrest</b>			
Front centre armrest with storage box, rear air outlets (2) and rear cup holders (2)	S	S	S
Rear seat centre armrest with load through provision	–	S	S
<b>Air conditioning</b>			
Semi-automatic	S	–	–
Dual zone automatic (2 modes) climate control with indirect ventilation mode	–	S	S
Air quality sensor with automatic air recirculation	–	S	S
Dust and pollen filter	S	S	S
<b>Cruise control</b>	–	S	S
<b>Cup holders</b>			
Front (2), with bottle opener	S	S	S
Rear (2)	S	S	S
Bottle holders in front door pockets	S	S	S
<b>Floor mats</b>			
Front and rear, carpet	A	A	A
Front and rear, rubber	A	A	A
<b>Grab handles</b>			
Soft fold away grab handles, front and rear	S	S	S
<b>Headlights</b>			
Coming / leaving home function	–	S	S
Combined headlight and fog light switch	S	S	S
Halogen twin headlights with daytime driving lights and clear polycarbonate lens	S	S	S
Headlight-on warning buzzer	S	S	S
Internal headlight range adjustment	S	S	S
Low light sensor with automatic headlight function	–	S	S
<b>In car entertainment and technology</b>			
AM/FM security coded radio (RCD310) with MP3/WMA compatible CD player	S	S	S
AM/FM security coded radio (RCD510) with 6½" touch screen display, MP3/WMA compatible SD card slot and 6 disc CD changer, in dash	A	A	A
Audio functions mounted on steering wheel	–	S	S
Auxiliary input audio socket in front centre console	S	S	S
Bluetooth® integrated hands free phone kit	A	A	A
Speakers, front and rear (8)	S	S	S



## Specifications continued

	90TSI Trendline	118TSI Comfortline	103TDI Comfortline
<b>Comfort and Convenience (continued)</b>			
<b>Instrumentation</b>			
Speedometer & tachometer, electronic odometer and tripmeter, service interval display, digital clock, fuel and coolant gauges, low fuel warning light, brake pad wear indicator, white adjustable illumination	S	S	S
<b>Interior highlights</b>			
'Titanium' inserts in dashboard and doors	S	-	-
'Black Pyramid' inserts in dashboard and doors	-	S	S
Brushed chrome trim on instrument cluster, vent surrounds and gearshift lever surround	S	S	S
Chrome trim on steering wheel, headlight switch and front reading light surround	-	S	S
Door sill scuff plates	A	A	A
Gearshift knob and handbrake grip in leather	-	S	S
Sports gearshift knob	A	A	A
Stainless-steel pedal set	A	A	A
<b>Interior lighting</b>			
With time delay	S	S	S
Foot well illumination, driver and front passenger	-	S	S
Front reading lights (2)	S	S	S
Rear passenger reading light	S	-	-
Rear passenger reading lights (2)	-	S	S
<b>Luggage compartment</b>			
Cargo organiser, luggage area tub storage with internal dividers and lid	A	A	A
Load restraining hooks, chrome	S	S	S
Luggage compartment light	S	S	S
Luggage compartment protection: moulded foam, rubber or plastic tub	A	A	A
Luggage net	A	A	A
Parcel shelf storage tray	A	A	A
Shopping bag hooks	-	S	S
Storage box in side lining	-	S	S
12 volt socket	-	S	S
<b>Mirrors</b>			
Automatic dimming interior rear-view mirror	-	S	S
Electrically heated and adjustable exterior mirrors	S	S	S
LED turn indicators integrated in exterior mirrors	S	S	S
<b>Parking distance sensors, rear</b>			
A	A	A	A
<b>Power steering</b>			
Electro-mechanical, vehicle speed and steering input sensitive	S	S	S
<b>Seating</b>			
Comfort front seats	-	S	S
Height adjustment for driver's seat	S	S	S
Height adjustment for front passenger's seat	-	S	S
Lumbar adjustment for front seats	-	S	S
Split folding rear seat backrest (60/40)	S	S	S
Rear seat centre armrest and load through provision	-	S	S
<b>Steering wheel</b>			
3 spoke leather rimmed steering wheel	-	S	S
Audio and Multi-Function Display controls	-	S	S
Height and reach adjustable steering wheel	S	S	S
<b>Storage</b>			
Centre console storage compartment	S	S	S
Chillable glove box with illumination, lockable	S	S	S
Coin tray and 12 volt socket in console	S	S	S
Compartment in roof console	S	S	S
Driver's side dashboard compartment with lid	S	S	S
Front door pockets with bottle holders	S	S	S
Front seat backrest storage pockets	-	S	S
<b>Trip Computer</b>			
Multi-Function Display (MFD) – trip time, trip length, average and current speed, average and current fuel consumption, distance till empty and outside temperature	S	S	S
Large format MFD Plus display with audio and convenience menus	-	S	S

## Specifications continued

	90TSI Trendline	118TSI Comfortline	103TDI Comfortline
<b>Comfort and Convenience (continued)</b>			
<b>Upholstery</b>			
Cloth seats	S	-	-
Comfort cloth seats	-	S	S
<b>Vanity mirrors</b>			
Driver's and passenger's side vanity mirrors	S	S	S
Illuminated on driver's and passenger's side	-	S	S
<b>Wipers</b>			
2 speed aero wipers with wash/wipe and vehicle speed sensitive intermittent wipe	S	S	S
Rain sensor	-	S	S
Rear window with wash/wipe and intermittent wipe	S	S	S
<b>Windows</b>			
Power front / rear, with roll-back function, driver with one-touch up-down	S	S	S
Remote operated convenience close and open feature	S	S	S
Sunblind for rear window	A	A	A
Sunblind for rear side window	A	A	A
<b>12V socket</b>			
Centre console	S	S	S
Luggage compartment	-	S	S
<b>Optional Equipment</b>			
Adaptive chassis control	O	O	O
Anti-theft alarm system with interior monitoring and tilt sensor	O	O	O
<b>Automatic Transmission</b>			
6 speed Direct Shift Gearbox (DSG) with sport mode and Tiptronic function	-	-	O
7 speed Direct Shift Gearbox (DSG) with sport mode and Tiptronic function	O	O	-
<b>Comfort package</b>			
Alloy wheels (Wellington) 15 x 6½" (4) with anti-theft wheel bolts	O	-	-
Automatic dimming interior rear-view mirror			
Cruise control			
Dual zone automatic (2 modes) climate control with indirect ventilation mode and air quality sensor with automatic air recirculation			
Foot well illumination, driver and front passenger			
Gearshift knob and handbrake grip in leather			
Illuminated vanity mirrors on driver's and passenger's side			
Leather rimmed steering wheel with audio and Multi-Function Display controls			
Multi-Function Display (MFD Plus)			
Low light sensor with automatic headlight function			
Coming / leaving home function			
Rain sensing windscreen wipers			
Front fog lights with static cornering light function, mounted in lower bumper	O	O	O
<b>In car entertainment and technology</b>			
Dynaudio Excite 300W premium audio system, 8 channel digital amplifier, AM/FM security coded radio (RCD510) with 6½" touch screen display, MP3/WMA compatible SD card slot and 6 disc CD changer, in dash	O	O	O
Dynaudio can also be combined with the optional RNS510 satellite navigation system.			
Media Device Interface (MDI) – compatible with iPod®, USB and mini USB	O	O	O
Fitted in the centre console and supplied with USB connection cable. Volkswagen Genuine Accessory iPod®, mini USB and auxiliary input connection cables sold separately.			
<b>Metallic / Pearl Effect paint</b>			
O	O	O	O
<b>Parking Assistance</b>			
Park Assist, parallel parking assistance	O	O	O
Parking distance sensors, front and rear			
Optical Parking System (OPS) in radio/navigation display			
Automatic kerb function when reversing, passenger's side exterior mirror			
Rear View Camera (RVC) with static guidance lines	O	O	O
RVC is available only in conjunction with RNS510 satellite navigation.			

## Specifications continued

	90TSI Trendline	118TSI Comfortline	103TDI Comfortline
<b>Optional Equipment (continued)</b>			
Satellite navigation system (RNS510) High-resolution touch screen display in 16:9 format, 3D map views, integrated 30 GB hard drive and SD card slot, DVD drive for the playback of audio CD/MP3 and video DVD Large format Multi-Function Display (MFD Plus) with satellite navigation, audio and convenience menus	○	○	○
Sport package Alloy wheels (Seattle) 17 x 7" with 225/45 R17 tyres (4) Dark tinted rear side windows and rear window, 65% light absorbing Front fog lights with static cornering light function, mounted in lower bumper Front sports seats with sports cloth trim Low tyre pressure indicator Sports suspension	–	○	○
Sunroof Electric glass sunroof, slide and tilt adjustable with sunblind Illuminated vanity mirrors and rear passenger reading lights	○	○	○
Upholstery Vienna leather upholstery with individually heated front sports seats and electric lumbar adjustment	–	○	○

## Technical Specifications

Engine	90TSI Trendline 1.4 litre TSI	118TSI Comfortline 1.4 litre TSI	103TDI Comfortline 2.0 litre TDI
Type	4 cylinder inline turbo petrol	4 cylinder inline Twincharger petrol	4 cylinder inline turbo direct injection diesel
Installation	Front transverse	Front transverse	Front transverse
Cubic capacity, litres/cc	1.4/1390	1.4/1390	2.0/1968
Bore/stroke, mm	76.5/75.6	76.5/75.6	81.0/95.5
Max power, kW @ rpm	90 @ 5000–5500	118 @ 5900	103 @ 4200
Max torque, Nm @ rpm	200 @ 1500–4000	240 @ 1750–4500	320 @ 1750–2500
Compression ratio	10.0:1	10.0:1	16.5:1
Fuel system	Bosch Motronic MED 9.5.10 FSI direct injection system	Bosch Motronic MED 9.5.10 FSI direct injection system	Bosch EDC 17 common rail
Ignition system	Electronic	Electronic	Compression
Exhaust emission control	Exhaust gas recirculation, catalytic converter and lambda probes	Exhaust gas recirculation, catalytic converter and lambda probes	Exhaust gas recirculation with oxidising catalytic converter and diesel particulate filter
Emission level	EU IV	EU IV	EU IV
Fuel type (Recommended)	Premium unleaded 98 RON	Premium unleaded 98 RON	Diesel 51CZ
<b>Transmission</b>			
Driven wheels	6 Spd Man 7 Spd DSG	6 Spd Man 7 Spd DSG	6 Spd Man 6 Spd DSG
Driven wheels	Front wheel drive	Front wheel drive	Front wheel drive
<b>Performance</b>			
0 – 100 km/h, seconds	9.5 9.5	8.0 8.0	9.3 9.3

## Technical Specifications continued

Engine	90TSI Trendline 1.4 litre TSI		118TSI Comfortline 1.4 litre TSI		103TDI Comfortline 2.0 litre TDI	
Fuel Consumption*	6 Spd Man	7 Spd DSG	6 Spd Man	7 Spd DSG	6 Spd Man	6 Spd DSG
Combined, L/100km	6.4	6.2	6.2	6.5	5.3	5.6
Urban, L/100km	8.4	7.9	7.7	8.3	6.8	7.3
Extra Urban, L/100km	5.3	5.2	5.3	5.3	4.4	4.7
CO <sub>2</sub> emission g/km	149	143	150	144	139	147
Fuel tank capacity L	55	55	55	55	55	55
<b>Running Gear</b>						
Suspension						
Front axle	Independent, MacPherson struts with lower A-arms. Anti-roll bar.					
Rear axle	Independent, four-link with coil springs. Anti-roll bar.					
Steering						
Electro-mechanical power assisted rack & pinion steering						
Brake systems						
Anti-lock Braking System (ABS) with Electronic Brake-pressure Distribution (EBD), Brake Assist and Electronic Stabilisation Program (ESP)						
Brakes						
Front	Ventilated Discs					
Rear	Discs					
Turning Circle (m)						
10.9						
<b>Weights</b>						
Tare Mass kg	6 Spd Man	7 Spd DSG	6 Spd Man	7 Spd DSG	6 Spd Man	6 Spd DSG
	1270	1290	1310	1330	1360	1380
Towing Capacity kg						
Braked <sup>†</sup>	1300	1300	1300	1300	1300	1300
Unbraked	640	640	640	640	640	640
<b>Exterior Dimensions</b>						
Overall length mm						
4199						
Width mm						
1785						
Height mm						
1479						
Wheelbase mm						
2574						
Track mm						
Front	1540					
Rear	1513					
<b>Interior Dimensions</b>						
Headroom mm						
Front	987 (965)					
Rear	979 (978)					
Interior width mm						
Front	1447					
Rear	1420					
Luggage area volume L						
Rear seat upright	350					
Rear seat folded	1305					
Luggage area floor length mm						
Rear seat upright	828					
Rear seat folded	1581					
Luggage area width mm						
At widest point	1044					
At narrowest point	1006					
Luggage load height mm						
To luggage cover	556					
To roof lining	927					

\* Fuel consumption figures according to Australian Design Rule (ADR) 81/02.

The driving style, road and traffic conditions, environmental influences and vehicle condition can in practice lead to consumption figures which may differ from those calculated with these standards.

<sup>†</sup> With trailer brakes up to a gradient of 12%

Figures in brackets with optional electric glass sunroof.

## Colours and Upholstery

### Colours



Candy White



Reflex Silver Metallic



United Grey Metallic



Silver Leaf Metallic



Shark Blue Metallic



Amaryllis Red Metallic

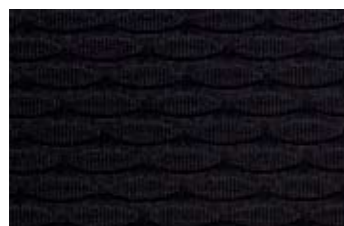


Deep Black Pearl Effect

Please note: Metallic and Pearl Effect paint are optional at an extra cost. The print process does not allow for exact reproduction of the exterior or the upholstery colours. For further details, please contact your Volkswagen Dealer.

**Please contact your Volkswagen Dealer for further information on colours and upholstery combinations.**

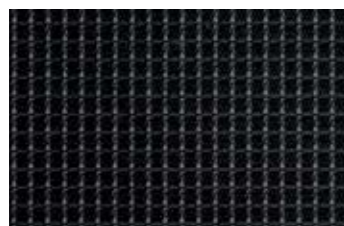
### Upholstery



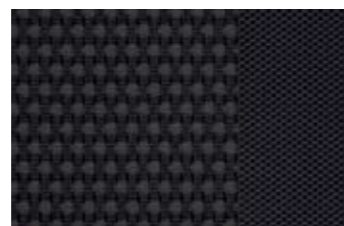
Black Cloth



#### Optional Seat Trim



Black Sports Cloth



Black Comfort Cloth

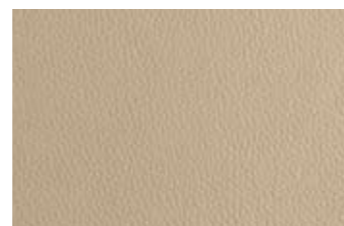


Black Vienna Leather



#### Key

- Standard in Trendline
- Standard in Comfortline
- Optional with Sport Package
- Optional with Comfortline



Corn Silk Beige Vienna Leather



## Owning a Volkswagen

### Volkswagen New Vehicle Warranty

Every new Volkswagen passenger vehicle is covered by a 3-year/100,000km (whichever occurs first) manufacturer's warranty, which includes Volkswagen Assist (24hr roadside assistance). Every new Volkswagen passenger vehicle is also covered by a 3-year paintwork and 12-year anti-corrosion perforation warranty.

### Volkswagen Assist – 24 Hour Roadside Assistance

As a valued customer, you can be assured that wherever you travel within Australia, you will have access to roadside assistance, 24 hours a day, 365 days a year. This is complimentary for the duration of the vehicle's original Volkswagen warranty period. You will receive help in the event of a breakdown or accident and if required, your vehicle will be mobilised or transported to an Authorised Volkswagen Repair Centre.

As a Volkswagen owner you will also have access to the additional benefits of accommodation and car rental if your vehicle cannot be mobilised within 24 hours, when you are over 100kms away from home. Volkswagen Roadside Assist can also be renewed at the expiry of the original warranty, ensuring ongoing coverage for your vehicle.

### Volkswagen Extended Warranty

To give you added peace of mind and the assurance of added security, you have the option to extend the factory warranty to suit your ownership cycle. If your Volkswagen was purchased new by you, we can offer you a 36 month/60,000km extension on your already existing Volkswagen manufacturers Warranty. Alternatively if your vehicle is already outside the Volkswagen manufacturers warranty period we can also offer you an extension of your factory warranty. Have the assurance that your Volkswagen remains a Volkswagen. For further information regarding warranty and extending your vehicles factory warranty, please consult your local Volkswagen dealer, refer to your owner's handbook or visit [www.volkswagen.com.au](http://www.volkswagen.com.au).

### Volkswagen Service

Your Authorised Volkswagen Service Centre is part of Volkswagen's global Quality Management System, ensuring all dealers are certified to ISO 9001:2000 – an internationally recognised Quality Standard. Authorised Volkswagen Service Centres have factory trained Technicians equipped with the very latest diagnostic equipment, specialist tooling and Volkswagen Genuine Parts. An Authorised Volkswagen Service Centre undertakes work in accordance to factory specified guidelines and maintenance schedules.

### Volkswagen Genuine Parts®

Volkswagen Genuine Parts® are designed for your vehicle and approved by Volkswagen, with particular regard to safety. The workmanship, dimensional accuracy and materials used in these parts comply with factory specifications. To ensure safety and reliability, Volkswagen recommends the use of Volkswagen Genuine Parts®. Volkswagen Authorised Dealers offer a 2-year warranty on Genuine Parts from the date of purchase.

### Volkswagen Finance

Buying, Borrowing or Leasing, Volkswagen Finance will certainly make you think differently about financing and insuring your new Volkswagen. Committed to meeting the needs of Volkswagen drivers, across Australia, we offer a range of leasing, financing and insurance products, each with distinct advantages depending on your specific circumstances. Our packages are personalised to suit your individual requirements. You design your plan so that it meets your budgeting needs and can rest assured that there will be no surprises along the way. Speak to your local participating Volkswagen Dealer today to put together a financial solution that best suits your lifestyle.

## Glossary

### Adaptive Chassis Control\*

The electrically controlled dampers of adaptive chassis control constantly adjust to the road conditions, the driving situation and driver's requirements. Using a button located on the centre console, the driver selects between three damper settings. In addition, the steering feel is adapted to the selected setting.

Starting from the normal setting, the customer can change the basic character of the car towards sporty or more comfort-oriented driving. In SPORT and COMFORT settings, the corresponding name is illuminated in the button. In NORMAL setting, only the shock absorber symbol is illuminated. In all settings, the adaptive chassis control adjusts the damping to the particular driving situation (up till one thousand times per second) which means it offers an optimum level of driving comfort and enjoyment at all times. Particularly on windy roads and poor surfaces, using adaptive chassis control offers sporty and yet comfortable driving.

### Anti-lock Braking System (ABS)

When braking, wheel speed sensors measure the road wheel speed and should one or more wheels start to lock the ABS system reduces brake pressure to that wheel. This prevents the wheels from locking during heavy or emergency braking, enabling the vehicle to remain steerable.

### Anti-Slip Regulation (ASR)

ASR is a switchable traction control system that prevents the wheels from spinning under acceleration by reducing engine torque.

### Brake Assist

During emergency braking, Brake Assist aids the driver by increasing the brake pressure automatically to a level exceeding the locking limit. The ABS is thus quickly brought into the operating range, which enables maximum vehicle deceleration to be achieved.

### Direct Shift Gearbox (DSG)

DSG is a manual gearbox in which the gearshifts are controlled electronically. What makes the DSG unique is that it has 2 separate gear sets operated by 2 multi-plate clutches. The benefit of 2 gear sets and 2 multi-plate clutches is that one gear set and clutch is engaged driving the vehicle with the second clutch having already pre-selected the next gear awaiting for power to be transferred. As the next gear has already been pre-selected prior to power being applied, the gear change only takes 3-4 100ths of a second. There is virtually no interruption to power, traction or acceleration. The DSG also offers Tiptronic gear selection and sports mode.

### Electronic Brake-pressure Distribution (EBD)

Electronic, more sophisticated means of regulating the ratio of front/rear brake pressure. Settings are varied according to driving and load conditions to ensure each wheel is braked to the optimum extent.

### Electronic Differential Lock (EDL)

EDL improves driving and steering characteristics when accelerating on road surfaces where each wheel has a different degree of traction. The system operates automatically and is combined with the ABS system. Using the ABS wheel sensors, EDL monitors the speed of the individual driving wheels. When a difference in driving wheel speed is detected (i.e. when one wheel starts to spin due to differences in road surfaces, e.g. due to water or dirt) the system brakes the spinning wheel, transferring engine power to the wheel with the best traction.

## Glossary (continued)

### **Electronic Stabilisation Program (ESP)**

ABS and ASR traction control systems are integrated into the Electronic Stabilisation Program (ESP). In short, ESP helps ensure that the vehicle goes where you steer it even in extreme driving conditions. The ESP system constantly compares the actual movement of the vehicle with pre-determined values and should a situation arise where the vehicle starts to skid, ESP will apply the brakes to individual wheels and automatically adjust the engine's power output to correct the problem. ESP prevents the vehicle from losing control when trying to avoid an accident, for example. It also prevents spinning off on a curve due to either understeer or oversteer.

### **Hill Start Assist (HSA)**

Hill Start Assist (HSA) holds the vehicle when the foot brake is released by temporarily locking the brake pressure (for a maximum of 1.5 seconds) to provide comfortable starting-off without rolling back. Hill Start Assist (HSA) operates on inclines greater than 5% and is fitted in combination with the Direct Shift Gearbox (DSG).

### **Park Assist\***

Park Assist actively helps the driver when reversing into parallel parking spaces. The system works by using sensors mounted either side of the front bumper together with parking distance sensors front and rear. To parallel park the driver needs to press the Park Assist button and use the appropriate indicator before the car passes the potential parking space. Sensors in the front bumper then scan the size of the parking space as the car is driven slowly past and the driver is alerted if the parking space is big enough. If there is sufficient space, the driver stops the car, selects reverse and lets go of the steering wheel.

Park Assist will alert the driver of the intended reverse path in the Multi-Function Display, within the driver's field of vision. Park Assist then actively supports the driver by taking over the steering control and parks the vehicle in the available space using the ideal course. The driver can however take over the control of the steering at any time and end the automatic parking procedure. The system can reverse into parking spaces on both the left hand and right hand side of the road, for example on one way streets.

Park Assist cannot replace the driver's attentiveness. The driver is still legally responsible for the vehicle. If the driver notices a risk that pedestrians, other vehicles or objects could be damaged or if they are uncertain of the risk, they will need to react accordingly and stop the vehicle, ending the function.

\*Optional equipment

Volkswagen is distributed by Volkswagen Group Australia Pty Ltd, The Lakes Business Park, 6 Lord Street, Botany, NSW 2019. ABN 14 093 117 876. Specifications are as planned at January 2009, for Model Year 2009 and are subject to change without notice or obligation. Cars and accessories shown may not depict Australian specifications. Fuel consumption figures according to Australian Design Rules (ADR) 81/02. All Volkswagen approved parts and accessories are warranted for 2 years/unlimited kilometres. All information in this brochure is correct at the time of publication, however variations may occur from time to time and Volkswagen, in so far as it is permitted by law to do so, shall not be liable in any way as a result of any reliance by any person on anything contained in this brochure. The colours shown in this brochure are indicative only and may vary from actual items owing to the printing process. Authorised Volkswagen dealers will provide up-to-date information on model application, design feature, prices and availability on request.

Volkswagen Insurance & Volkswagen Extended Warranty are provided by Allianz Australia Insurance Limited (Allianz), AFS Licence No. 234708, ABN 15 000 122 580. In arranging this insurance Volkswagen Financial Services Australia Limited, ABN 20 097 071 460 & Volkswagen Group Australia Pty Ltd, ABN 14 093 117 896 and the authorised dealers act as agents of Allianz and not as your agent. Volkswagen Finance is a trading name of Volkswagen Financial Services Australia Limited. Locked Bag 5009, Alexandria NSW 2015. Tel: 02 9695 6311.



**Das Auto.**

# **Volkswagen Golf**

**February 2009**

**Publication: VGA3009K**

**Internet: [www.volkswagen.com.au](http://www.volkswagen.com.au)**