



Das Auto.

## Volkswagen Passat







Overseas specification vehicles are shown in this brochure.  
Some features and options may not be available in Australia.

### **The Passat philosophy.**

This elegant Passat intends to increase the pulse rate of every driver. Not only with its distinctively dynamic appearance and promise of inspired driving delight, but with innovative technology, surprising value and advanced German engineering.

The Volkswagen Passat is setting a new benchmark in its class with greater performance, safety and fuel efficiency plus a wealth of intelligent, carefully considered details and luxurious features that will surprise. The balance of aesthetics and functional innovation is impressive and so too is its ambition to stay always one step ahead.





### Full of unexpected pleasures.

First impressions are – there's a lot to love about the new Passat, starting with the **innovative key** and **key ignition**. Starting and parking has never been easier than with this simple, push-button electronic ignition switch. This key also accesses an automatic boot release on the sedan –

great when you're loaded up and don't have a spare hand. The smart thinking continues with creative utilisation of space, such as the practical **umbrella holder** with drainage inside the driver's door; a large glove box that is chillable and numerous storage compartments. Interior lighting

includes reading lights front and rear together with soft ambient illumination and distinctive blue instruments. Carpet mats as standard is another of Passat's unexpected pleasures.





6

7

### **Full of unexpected pleasures.**

Also stunning is the generous use of **metallic finishes** throughout. Intelligent solutions like the 'set and forget' automatic function that turns headlights and wipers on and off as needed, and the clever '**coming home/ leaving home**' illumination are truly pleasant surprises.

Other little touches – such as the high quality paint finish that extends to the engine bay and the tail lights with LED technology – emphasise the fact that Passat is an incredibly well thought-out vehicle.





### The Passat range.

Both sedan and wagon offer a choice of the latest petrol and diesel engines, delivering excellent fuel efficiency without compromising power. The Passat 147TSI offers an outstanding list of standard features, comfort and amazing space.

The 103TDI and 125TDI models, like the rest of the Passat range, excite with striking details, safety and technology. The V6 FSI Highline boasts extensive examples of luxurious innovation, engaging passengers and drivers alike.

The flagship of the range, the R36 sets new precedents in performance and prestige through Volkswagen Individual designed exterior and interior elegance.





## The Passat range.

The Passat sedan and wagon are both crafted to exacting standards of quality, performance, safety and style. They're spacious with distinctively elegant lines, dynamic form and a unique blend of function, innovative technology and luxurious little details.

Take a look at the luggage space in the sedan. It's impressively large and equipped with hooks for hanging bags and securing luggage. There's an ingenious 'load-through' feature that works simply by folding down the centre rear armrest to allow you to easily carry long items such as skis or golf bags.

With additional space in the cabin, the driver and passengers can stretch out, relax and enjoy the elegant finish and driving pleasure. Thanks to the transversely positioned engine, all Passat models are blessed with additional space, which is something the designers have utilised brilliantly.

The wagon with the flexibility of a 60/40 split-fold rear seat and backrest adds a vast dimension to the carrying capacity of up to 1,731 litres. Additional touches in the wagon include retractable luggage cover, net partition and elegant chrome roof rails.





01

## Interior.

The promise of the elegant exterior matches the innovative interior concept. This is where functionality and intelligent solutions continue with many pleasant surprises. For instance, the user-friendly parking brake is operated by the touch of a button on the dashboard – and holds the vehicle safely. It releases automatically once you're driving again.

As soon as you sit inside you're aware of the reassuringly solid ambience. **Superb materials** and **ergonomic design** embody the detailed planning and luxurious touches. Cast your eyes over the **metallic finishes** around doors, windows and the fine instrument surrounds on the dashboard. It's all class – as is the leather-clad gearshift. Breathe easy in the comfort of the **dual zone climate control air-conditioning** with two rear outlets for back seat passengers.

Appreciate the subtle convenience of the auto dimming interior rear view mirror. There's a low light sensor that activates the headlights while an additional 'set and forget' automatic function operates the windscreen wipers.



02



04



03



05

- 01 The Passat interior shown with optional leather upholstery and RNS510 satellite navigation.
- 02 The Passat Wagon offers asymmetrical split-folding rear seats and backrest with a load-through provision for a cavernous boot volume.
- 03 The centre console with armrest offers a convenient storage box.
- 04 The Passat 103TDI, 125TDI and 147TSI come standard with black cloth comfort seats.
- 05 Starting the engine has never been easier with the innovative electronic ignition switch.



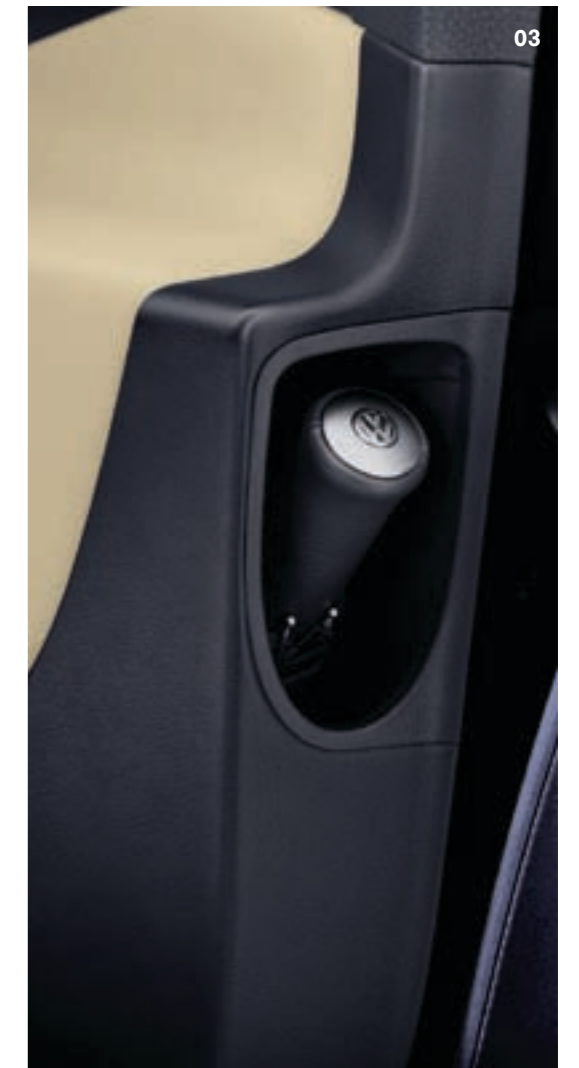


- 01 The Passat features a three-spoke leather-covered multi-function steering wheel with audio and trip computer functions.
- 02 The Passat range is equipped with standard cruise control.
- 03 The driver's door incorporates a practical umbrella compartment.
- 04 The latest technology in-car entertainment is available with the new RCD510 system, featuring a high resolution large colour TFT display with touch screen operation and a six disc CD changer with mp3/wma functions.

## Interior.

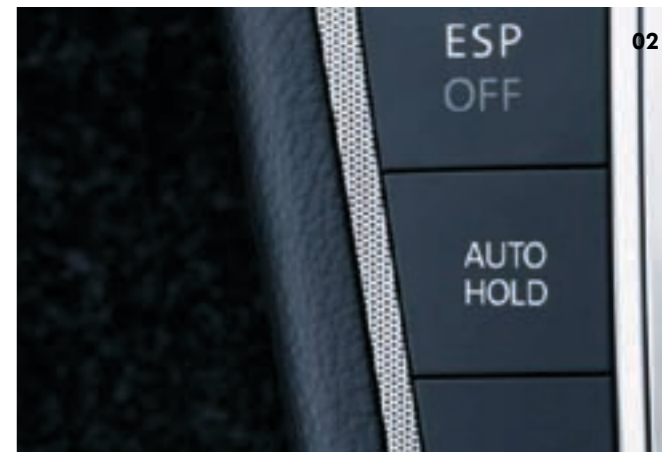
Both Passat sedan and wagon boast luxuriously **large luggage compartments** with many carefully considered surprises designed to add even more impact to an already astounding space. And for convenience the front centre armrest is height adjustable whilst the glove compartment provides chillable storage space.

Passat's clearly arranged cockpit is more than elegant; it focuses on optimum driving comfort and ease. From the fully adjustable, lumbar supporting comfort or sports (V6 FSI Highline) seats to **ergonomically designed controls**, every driver's need has been pre-empted. The electronic ignition switch and illuminated instrument panel is directly in sight allowing quick access to all major driving data. The stylish **three-spoke, leather-rimmed steering wheel** offers touch-button audio and trip computer functions as well as height and reach adjustment. The new and upgraded **RCD510 in-car entertainment system** features a high resolution large colour TFT display with touch screen operation, a six disc CD changer with mp3/wma functions, AUX-IN interface for connecting a mobile audio player, as well as SD/MMC memory card slots.



Umbrella shown is an optional merchandise product not included with the car.





- 01 The passenger safety cell is formed from steel panels with optimised strengths utilising the most advanced manufacturing techniques and materials.
- 02 With the innovative auto-hold function, the brakes are activated automatically when the vehicle comes to a standstill.



#This vehicle has been awarded a maximum 5 Star Rating by ANCAP.

## Safety.

It's reassuring to feel safe in all conditions; and that's the promise of Passat. A galvanized steel body, intelligent technology and protective measures (such as laser welding, rigid body construction and impact-resisting passenger safety cell) promise peace of mind. The Passat's 12-year anti-corrosion perforation warranty is evidence of Volkswagen's commitment to safety. Volkswagen's active safety system features **Electronic Stabilisation Program** (ESP) that detects critical situations and brakes individual wheels, reducing engine output and returning

control to the driver. ESP is supported by an **Anti-Lock Braking System** (ABS) and **Brake Assist** to recognise emergency braking situations and automatically increase the braking effect. **Electronic Brake-Pressure Distribution** (EBD) regulates front/rear brake pressure ratios, ensuring the Passat brakes optimally, while **Anti-Slip Regulation** (ASR) enhances traction control. The combination of all these features assures the driver of greater control and maximised braking efficiency when needed.

### Electro-mechanical parking brake and Auto Hold function.

You can climb any mountain with the standard equipped electro-mechanical parking brake and Auto Hold. As soon as the Passat comes to a complete stop, the ABS hydraulic unit retains its final braking pressure. So even when you take your foot off the brake pedal, the brakes remain applied to all four wheels, providing increased comfort in stationary traffic. When you drive off again, a touch on the accelerator automatically releases this function, and your journey continues.





V6 FSI Highline shown

## Safety (continued).

The Passat also excels in passive safety measures. It's fitted with **three-point, inertia reel seat belts** with front and outer rear seat belt pretensioners and front belt force limiters. There is a total of eight airbags: Driver and passenger **front and side airbags**, rear seat passenger **side airbags** and **full length curtain airbags**, to help protect both front and rear passengers in a side impact. Passat also offers **front and rear parking sensors** to assist parking and dashboard warning symbols advising of a deviation in tyre pressure – in plenty of time to adjust. A clever feature is the **'coming home/**

**leaving home'** function that illuminates the area around your Passat. In the interests of cyclist and pedestrian safety, there are special protective zones at the front. No wonder Volkswagen Passat was awarded a maximum **5 star safety rating** from ANCAP#.

### Adaptive chassis control.

Adaptive Chassis Control utilises electrically controlled dampers to adjust the Passat's suspension settings, according to the road conditions and the particular driving

situation, such as braking or steering. At the touch of a button, you can choose between three suspension settings: Normal, Sport, or Comfort. The steering feedback intuitively adapts to the setting you've selected. When engaging Sport or Comfort settings, the corresponding button illuminates, providing visual feedback. When the Normal setting is engaged, the shock absorber button illuminates. Adaptive Chassis Control is standard for Passat V6 FSI Highline models.



01



02



03

- 01** The Passat is equipped with a total of eight airbags, providing optimum protection for all passengers.
- 02** Front and rear parking distance sensors with acoustic warning help you when parking.
- 03** The Optical Parking System shows the Passat's position and distance from obstacles.

### Optical parking system.

The Optical Parking System expands the parking aid/parking sensor concepts to a new level. A silhouette of the Passat is displayed on the radio or navigation system screen during parking. The display shows the Passat's position and distance from obstacles. Any obstacle within range of the ultrasonic sensors is shown in colour. This feature is standard for all Passat models, available with RCD510 radio system and RNS510 optional satellite navigation.





## 147TSI.

The Passat 2.0 litre turbo-charged TSI is an awesome performer with 147kW and 280Nm of torque. This outstanding engine with direct petrol injection is exceptionally economical with a dynamic development of thrust resulting in terrific acceleration (0 to 100km/h in 7.8 seconds for both sedan and wagon). Its dramatic pulling power and smooth running is further enhanced by the **6-speed Tiptronic transmission**.

Outstanding comfort and style features are standard in the new Passat models, such as the individual comfort

provided by **dual zone climate control air conditioning** for driver and front passenger. In addition, there are electrically heated and adjustable mirrors with integrated indicators and tail lights with LED technology. The **three-spoke leather steering wheel** with trip computer and audio functions emphasises the sporty character of the Passat while another smart feature is the **automatically dimming rear view mirror**. The many automatic features include an integral rain sensor that activates the windscreen wipers, a low tyre pressure indicator, low light sensor

that turns the headlights on and the very convenient **'coming home-leaving home'** function that illuminates the ground around the Passat. Of course, the Passat also offers cruise control, power windows, front and rear parking sensors and the premium sound system with an mp3 compatible six disc CD changer in the dash and eight speakers. Stylish 17" **Le Mans alloy wheels** are also standard.



- 01** The distinctive tail and curved trailing edge, together with the chrome body side and rear bumper mouldings, emphasise the sporty character of the Passat.
- 02** The Passat range offers dual zone climate control with a dust and pollen filter for maximum comfort.
- 03** The stylish 17" Le Mans alloy wheels are standard on the Passat 147TSI and 125TDI.





## 103TDI and 125TDI.

The Passat range offers the choice of 2 powerful and efficient turbo diesel TDI engines. Volkswagen's cutting-edge TDI technology injects fuel with great speed and precision under incredibly high pressure. This produces an even more powerful, efficient and clean burning engine with the entry level TDI producing 103kW of power and 320Nm of torque from only 1,750 rpm and the more powerful TDI Passat producing 125kW of power and 350Nm of torque.

The flexibility is remarkable while fuel consumption (6.6 litres per 100 km\* – combined cycle 103kW Sedan) adds even more appeal to the Passat. Each Passat TDI engine also comes equipped with a standard diesel particulate filter. With its **6-speed Direct Shift Gearbox (DSG)** transmission you'll find your love of driving is fast becoming a passion.

\*Combined city/highway driving as per Australian Standard ADR 81/01.

Volkswagen's new TDI engines featuring Common Rail technology boast smoother and quieter operation. Passat's TDI engines are equipped with a Diesel Particulate Filter producing cleaner emissions. Passat's running gear features a compact MacPherson strut front axle and a 4-link independent rear axle, meaning there's plenty of compensation for any unevenness in the road. Yet another reassuring safety feature.



**01** Distinctive chrome roof rails are an exterior highlight of the Passat Wagon.

**02** The stylish 16" Milwaukee alloy wheels are standard in the Passat 103TDI.

## Direct Shift Gearbox (DSG).

DSG is an advanced 6-speed gearbox in which the clutch and gearshift are controlled electronically. What makes DSG unique is that the next gear is already pre-selected and awaiting power to be transferred, resulting in a gear change that takes only 3-4 hundredths of a second. The benefit is virtually no interruption to power, traction or acceleration and because it ensures optimum transmission of engine power, DSG provides excellent fuel consumption and driving satisfaction.





### V6 FSI Highline.

The Passat V6 FSI Highline is the epitome of advanced engineering. From its sporty rear to its streamlined nose, gleaming radiator grille and stylish brushed aluminium trim, the V6 FSI Highline is a dynamic work of art. It produces 184kW of power and an impressive 330Nm of torque, and thanks to DSG, there's no interruption to pulling power.

This prestigious model offers 4MOTION all wheel drive and Adaptive Chassis Control, which provides the choice of Normal, Sport or Comfort suspension settings at the touch of a button. Napa leather upholstered sports seats are standard and individually heated in the front. The V6 FSI Highline is safety conscious with low tyre pressure safety sensors, plus an anti-theft alarm system with interior monitoring and tilt sensor. Also standard are front fog lights and stylish 17" Monte Carlo alloy wheels.



01



02



03

### 4MOTION.

The Passat V6 FSI Highline and R36 feature this advanced all wheel drive system. With variable torque distribution to all four wheels, 4MOTION provides the ultimate in enhanced road safety and superior handling. This innovative Volkswagen technology provides the best possible traction at all road speeds and conditions, regardless of the weather. The system uses an electronic Haldex clutch that responds to traction losses at the front and rear axles, and directs torque to the axle with the best traction.

- 01 The Passat V6 FSI Highline offers front fog lights, mounted in the lower bumper, adding a sporty element and safety feature to the Passat.
- 02 The stylish 17" Monte Carlo alloy wheels are standard on the V6 FSI Highline.
- 03 The Passat V6 FSI Highline and R36 are equipped with 4MOTION all wheel drive.





## Passat R36 – where performance and prestige merge.

The explosive Passat R36 takes its place as the flagship of the range and the ultimate combination of performance and prestige. The R36 was conceived by Volkswagen Individual, the specialist team for premium models. The R36 is the fastest Passat ever.

Every detail of the R36 connects exclusive design with the uncompromising power of a sports car. In the most potent Passat of all time, breathtaking acceleration and torque are derived from a V6 FSI engine combined with a 6 speed DSG transmission.

The 3.6 litre direct injection petrol engine exerts a sensational 220kW of power with a hefty 350Nm of torque. An extremely dynamic sport chassis plants the 18" Omanyt wheels firmly to the road.

The purposeful character of the R36 is underlined by R36 specific sports suspension, widened side sill panels and brushed dark aluminium decorative inserts in the dashboard and centre console.





Visually, the R36 is the most dynamic model of the globally successful 'R' series. The 'R' styled bumper and prominent wheel arch extensions attest to the R36's athletic character. Chrome highlights reinforce the striking impact of the matte chrome finish radiator grille surround. Black grille inserts in the front lower air intake continue the streamlined theme of the car's front end.

Sophisticated bi-xenon headlights with dynamic and static cornering lights are further evidence of the R36's compelling design attributes. The rear of the R36 features a newly designed boot lid spoiler for the sedan or roof spoiler for the wagon. The unique rear bumper threatens performance with dual chrome exhaust pipes, creating the impression of dynamism even when stationary.

The Passat R36 combines the sophistication of a Passat sedan or wagon with the performance of a fully fledged sports car. In terms of acceleration, the R36 outstrips every other Volkswagen. The sedan thunders to 100 km/h in a mere 5.6 seconds, and the wagon just 5.8. The engine propels the Passat from any point in the rev range – gripping you firmly into your sports seat. This is an adventure you will certainly want to repeat.



The R36 yields its immense force equipped with Volkswagen's advanced 4MOTION all wheel drive system. Using the 4MOTION system, power is distributed to the wheels that need it most, ensuring all four wheels fully transfer the R36's intense power. The result is increased traction, superior safety and intensified driving pleasure, on any type of road.





01

- 01 The Passat range offers an optional leather upholstery package with individually heated front seats (standard on V6 FSI Highline).
- 02 Optional child booster seats provide optimum safety and comfort for your child.
- 03 Park Assist features ultrasonic sensors that measure the available space then guide the car into the space.
- 04 The MDI connects USB audio, iPod or data storage devices and these can be operated via the in-dash audio system.
- 05 Adaptive Cruise Control brakes your car to the same speed as the vehicle in front and maintains the pre-selected distance.
- 06 Volkswagen Individual offers 18" Chicago alloy wheels to add a personal touch.
- 07 The new RNS510 satellite navigation system features a high-resolution touch screen display capable of 3D map views, with a 30GB hard drive and DVD drive for audio and video playback.

## Optional Equipment.

**Park Assist\*** uses ultrasonic sensors to compare an available space with the Passat's length. If there's enough room to park, Park Assist\* automatically takes charge when reverse gear is selected. All you control are the accelerator and brake. **Bi-xenon headlights** with **dynamic cornering light system** swivel to illuminate the cornering path. The **RNS510 satellite navigation system** displays 3D maps and features audio and video playback. There are **walnut wood** and **brushed aluminium inserts** in the dashboard and centre console. The **electric glass sunroof** is slide and tilt adjustable. Passat Wagon models offer an optional **fully automatic tailgate** with electronic opening and closing. **Child booster seats** are integrated into the rear seat. For greater individuality, Volkswagen Individual offers stylish **18" Chicago alloy wheels** with a 15mm lowered sports suspension package. Special options include **leather upholstery#**, and the **anti-theft alarm system#**.

### Adaptive Cruise Control with Front Assist

The Passat's optional Adaptive Cruise Control (ACC) uses a radar sensor to add capabilities to the conventional cruise control system. When approaching a slower moving vehicle, Adaptive Cruise Control brakes your car to the same speed as the vehicle in front, maintaining the pre-selected distance. When a vehicle pulls into your lane in front of you or slows down, your Passat is automatically decelerated to maintain the pre-selected distance. If the vehicle ahead moves out of your lane, the Passat then accelerates up to the preset desired speed. The engine management system intervenes to facilitate this deceleration. If adjustments to the engine torque don't decelerate the Passat sufficiently, and if the traffic situation requires, it is braked to a standstill. This provides an increased level of convenience, especially in slow moving traffic.

Front Assist is a traffic monitoring system that uses a radar sensor to detect when your distance to the car in front becomes critical. It helps to shorten the braking distance, reducing the risk of a rear-end collision. Front Assist warns you of a dangerous situation via a visual warning in the instrument panel as well as an alert sound. At the same time the Brake Assist system switches to 'increased sensitivity'. In case you don't react, Brake Assist engages 'maximum sensitivity' – activating a brief braking jolt to draw your attention to the risk of a collision.

The driver is completely responsible for their speed and distance to the vehicle in front – including when the system is switched on. While Adaptive Cruise Control is ideal for driving along straight roads in favourable weather conditions, this assistance system should not be used on winding roads or in adverse weather conditions.

### Media Device Interface (MDI)

This sophisticated new interface facilitates connection to USB audio, data storage devices and Apple iPod. The MDI allows audio files to be operated via the in dash audio system, without the need to input controls via the actual device itself. The MDI system also provides a charging function.

\* Park Assist not available for R36. # Standard for V6 FSI Highline.

30



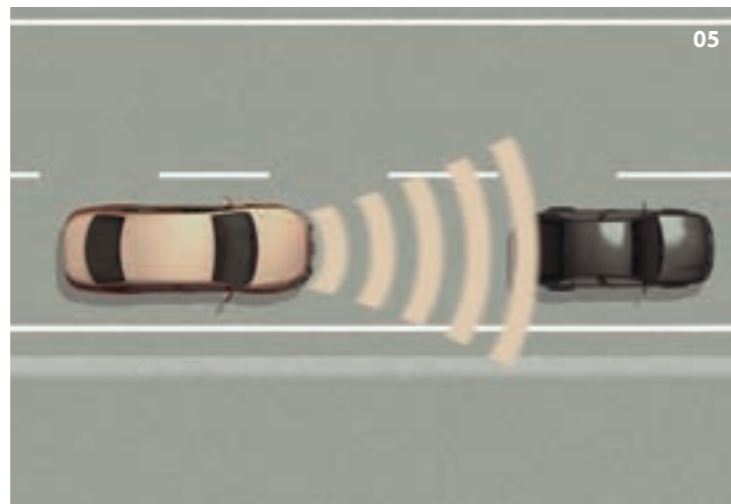
02



03



04



05



06



07

31



## Volkswagen Genuine Accessories.

Movement fascinates. In fact, there are few subjects that excite people more, that's because movement is synonymous with freedom. Our comprehensive range of genuine accessories give you the freedom to customise the look and feel of your vehicle to reflect your own personality and individual sense of style.

The product philosophy is simple – to deliver innovative technologies and premium design – right down to the finest detail. Each and every genuine accessory has been designed specifically with the Passat in mind and has been engineered and rigorously tested to ensure that it meets the same high standards of quality as the vehicle itself.

No matter what you choose you can have peace of mind knowing that any genuine accessory fitted by your local Volkswagen Dealer, at the time of your vehicle purchase will be covered by the same warranty as the vehicle itself.

For more information or to experience the full range of genuine accessories designed to suit the Passat, visit your local Volkswagen Dealer.



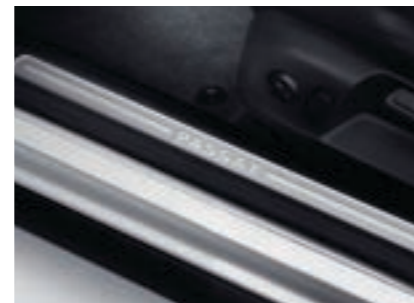
Body Kit, Front



Roof Bar Set



Rubber Floor Mats



Door Sill Protective Strip



Ski and Luggage Box



Carpet Floor Mats



Tow Bar



Bicycle Holder



Stainless Steel Pedal Set



Front and Rear Mudflaps



Body Kit, Rear



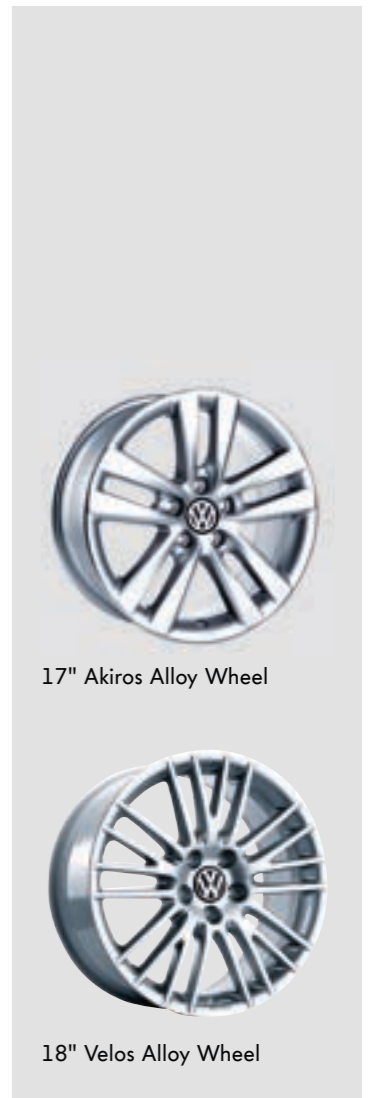
MEDIA-IN



Rear Boot Trim, Chrome



Bluetooth Phone Kit



17" Akiros Alloy Wheel

18" Velos Alloy Wheel



Boot Mat, Moulded Foam



Satellite Navigation System



## Specifications

	103TDI Sedan & Wagon	125TDI Sedan & Wagon	147TSI Sedan & Wagon	V6 FSI Highline Sedan & Wagon	R36 Sedan & Wagon
<b>Safety and Security</b>					
<b>Airbags</b>					
Driver and front passenger airbags	S	S	S	S	S
Driver and front passenger side airbags	S	S	S	S	S
Outer rear seat passenger side airbags	S	S	S	S	S
Curtain airbags, front and rear	S	S	S	S	S
<b>Anti-theft</b>					
Alarm system with interior monitoring and tilt sensor	O	O	O	S	S
Electronic engine immobiliser	S	S	S	S	S
Electronic ignition lock	S	S	S	S	S
<b>Body</b>					
Fully galvanised with 12 year anti-corrosion perforation warranty	S	S	S	S	S
Door side impact protection	S	S	S	S	S
Rigid safety cell with front and rear crumple zones	S	S	S	S	S
<b>Brakes</b>					
Anti-lock Braking System (ABS)	S	S	S	S	S
Electronic Brake-pressure Distribution (EBD)	S	S	S	S	S
Brake Assist	S	S	S	S	S
Blue brake callipers	-	-	-	-	S
Electro-mechanical parking brake	S	S	S	S	S
Auto hold function	S	S	S	S	S
Hazard warning system triggered in emergency braking situation	S	S	S	S	S
<b>Child restraint</b>					
Child seat anchor points (3)	S	S	S	S	S
<b>Fog lights</b>					
Front fog lights, mounted in lower bumper	O	O	O	S	-
Rear fog lamp	S	S	S	S	S
<b>Head restraints</b>					
Front safety optimised head restraints, height adjustable	S	S	S	S	S
Rear head restraints height adjustable (3)	S	S	S	S	S
<b>Locking</b>					
Remote central locking with deadlock mechanism	S	S	S	S	S
2 stage unlocking (programmable)	S	S	S	S	S
Automatic locking after takeoff (programmable)	S	S	S	S	S
One touch lock/unlock for driver	S	S	S	S	S
Child safety locks on rear doors	S	S	S	S	S
<b>Seat belts</b>					
Front height adjustable with pre-tensioners and belt force limiters	S	S	S	S	S
Outer rear seat belt pre-tensioners	S	S	S	S	S
Visual and acoustic warning for driver and front seat passenger seat belts not fastened	S	S	S	S	S
3 point seat belts for all passengers	S	S	S	S	S
<b>Suspension</b>					
Adaptive chassis control	-	-	-	S	-
Sports suspension (lowered 25mm)	-	-	-	-	S
<b>Traction Control</b>					
Anti-Slip Regulation (ASR)	S	S	S	S	S
Electronic Stabilisation Program (ESP)	S	S	S	S	S
4MOTION all wheel drive	-	-	-	S	S
<b>Exterior Equipment/Styling</b>					
<b>Body enhancements</b>					
Body coloured bumper bars, door handles and exterior mirrors	S	S	S	S	S
Chrome radiator grille highlights	-	-	-	S	S
Chrome trim around side window frames	S	S	S	S	S
Chrome body side and rear bumper protective mouldings	S	S	S	S	S
Radiator grille surround in chrome finish	S	S	S	S	-
Radiator grille surround in matte chrome finish	-	-	-	-	S
R36 design package consisting of front and rear bumpers in 'R' sports design, body side lower sill extensions, wheel arch extensions, rear boot lid or roof spoiler, dual chrome exhaust tailpipes and R36 badges front and rear	-	-	-	-	S
Sports body kit	A	A	A	A	-
<b>Protection</b>					
Bonnet protector	A	A	A	A	A
Headlight protectors	A	A	A	A	A
Loading sill protection, clear or stainless-steel	A	A	A	A	A
Mudflaps, front and rear	A	A	A	A	-
Slimline weather shields	A	A	A	A	A
<b>Paint</b>					
Metallic or Pearl Effect paint finish	O	O	O	O	S

## Specifications continued

	103TDI Sedan & Wagon	125TDI Sedan & Wagon	147TSI Sedan & Wagon	V6 FSI Highline Sedan & Wagon	R36 Sedan & Wagon
<b>Exterior Equipment/Styling (continued)</b>					
<b>Roof</b>					
Roof rails, chrome (Wagon)	S	S	S	S	S
Bicycle, ski, surfboard, snowboard and kayak holders	A	A	A	A	A
Luggage rack	A	A	A	A	A
Roof bars	A	A	A	A	A
Ski and luggage box (450 litres)	A	A	A	A	A
<b>Tail lights with LED technology</b>	S	S	S	S	S
<b>Tinted Glass</b>					
Darkened rear tail light clusters	-	-	-	-	S
Heat insulating tinted glass	S	S	S	S	S
<b>Towbar</b>					
Tow bar with 7-pin flat trailer connector and removable tongue	A	A	A	A	A
<b>Wheels</b>					
Alloy wheels (Milwaukee) 16 x 7" with 215/55 R16 tyres	S	-	-	-	-
Alloy wheels (Le Mans) 17 x 7½" with 235/45 R17 tyres	-	S	S	-	-
Alloy wheels (Monte Carlo) 17 x 7½" with 235/45 R17 tyres	-	-	-	S	-
Alloy wheels (Akiros) 17 x 7½"	A	A	A	A	-
Alloy wheels (Omanyt) 18 x 8" with 235/40 R18 tyres	-	-	-	-	S
Alloy wheels (Velos) 18 x 8"	A	A	A	A	A
Anti-theft wheel bolts	S	S	S	S	S
Full size alloy spare wheel	S	S	S	S	S
Low tyre pressure indicator	S	S	S	-	-
Tyre pressure monitoring system	-	-	-	S	S
<b>Comfort and Convenience</b>					
<b>Armrest</b>					
Front centre armrest with storage box and 2 rear air outlets	S	S	S	S	S
Rear seat centre armrest with cup holders and load through provision	S	S	S	S	S
<b>Air conditioning</b>					
Dual zone climate control with indirect ventilation mode	S	S	S	S	S
Air quality sensor with automatic air recirculation	S	S	S	S	S
Dust and pollen filter	S	S	S	S	S
<b>Cruise control</b>	S	S	S	S	S
<b>Cup holders</b>					
Front (2) with cover	S	S	S	S	S
Rear (2) in rear centre armrest	S	S	S	S	S
Bottle holders in front door pockets	S	S	S	S	S
<b>Entry/warning reflectors in front and rear doors</b>	S	S	S	S	S
<b>Floor mats</b>					
Front and rear, carpet	S	S	S	S	S
Front and rear, rubber	A	A	A	A	A
<b>Fuel filler flap</b>					
Electrically operated via switch on drivers door	S	S	S	S	S
<b>Grab handles</b>					
Soft fold away grab handles (4)	S	S	S	S	S
<b>Headlights</b>					
Halogen headlights with clear polycarbonate lens	S	S	S	S	-
Bi-xenon headlights for high and low beam with static and dynamic cornering lights, automatic self levelling and headlight cleaning system	O	O	O	O	S
Headlight-on warning buzzer	S	S	S	S	S
Internal headlight range adjustment	S	S	S	S	-
Low light sensor with automatic headlight function	S	S	S	S	S
Coming/leaving home function	S	S	S	S	S
Combined headlight and fog light switch	S	S	S	S	S
<b>In Car Entertainment</b>					
AM/FM security coded radio (RCD510) with 6½" touch screen display, MP3/WMA compatible SD card slot and 6 disc CD changer, in dash	S	S	S	S	S
Audio functions mounted on steering wheel	S	S	S	S	S
Auxiliary input socket for external audio source in front centre console	S	S	S	S	S
Bluetooth® integrated hands free phone kit	A	A	A	A	A
Speakers, front and rear (8)	S	S	S	S	-
Volkswagen sound package – 8 channel 250W digital amplifier with 10 speakers	-	-	-	-	S
<b>Instrumentation</b>					
Speedometer & tachometer, electronic odometer and tripmeter, digital clock, fuel & coolant gauges, outside temperature display, transmission gear indicator and white adjustable illumination	S	S	S	S	S



Specifications continued

	103TDI Sedan & Wagon	125TDI Sedan & Wagon	147TSI Sedan & Wagon	V6 FSI Highline Sedan & Wagon	R36 Sedan & Wagon
<b>Comfort and Convenience (continued)</b>					
<b>Interior highlights</b>					
'Matte chrome' (Black interior) or 'Stainless steel' (Beige interior) finish inserts in dashboard and centre console	S	S	S	-	-
Brushed aluminium inserts in dashboard and centre console	-	-	-	S	-
Dark brushed aluminium inserts in dashboard and centre console	-	-	-	-	S
Door sill scuff plates with stainless-steel insert	A	A	A	A	A
Aluminium accelerator and brake pedals with 'R' flags	-	-	-	-	S
Aluminium door sill inlays with R36 emblem in front	-	-	-	-	S
Leather steering wheel and gear shift knob	S	S	S	S	S
Matte chrome trim on instrument cluster and gearshift lever surround	S	S	S	S	S
Stainless-steel sports pedal set	A	A	A	A	A
<b>Interior lighting</b>					
With time delay, front and rear	S	S	S	S	S
Reading lights, front and rear with chrome rings	S	S	S	S	S
<b>Luggage compartment</b>					
Automatic boot lid release (Sedan)	S	S	S	S	S
Chrome plated load restraining hooks	S	S	S	S	S
Luggage compartment light	S	S	S	S	S
Luggage compartment protection, moulded foam and plastic	A	A	A	A	A
Luggage net	A	A	A	A	A
Extendable net partition and luggage cover (Wagon)	S	S	S	S	S
Shopping bag hooks (Sedan)	S	S	S	S	S
Stainless steel sill protection strip (Wagon)	-	-	-	S	S
Storage box in side lining	S	S	S	S	S
12 volt socket	S	S	S	S	S
<b>Mirrors</b>					
Automatic dimming interior rear-view mirror	S	S	S	S	S
Automatic kerb function when reversing, passenger's side exterior mirror	-	-	-	-	S
Electrically heated and adjustable exterior mirrors	S	S	S	S	S
Exterior mirrors with memory and electrically foldable	-	-	-	-	S
Turn indicators with LED technology integrated in exterior mirrors	S	S	S	S	S
<b>Parking distance sensors</b>					
Audio volume level reduction when warning is activated	S	S	S	S	S
Optical Parking System (OPS) in radio display	S	S	S	S	S
Parking distance sensors, front and rear with acoustic warning	S	S	S	S	S
<b>Power steering</b>					
Electro-mechanical, vehicle speed and steering input sensitive	S	S	S	S	S
<b>Seating</b>					
Comfort front seats	S	S	S	-	-
Sports luxury front seats	-	-	-	S	-
R36 sports front seats with electro-pneumatic side bolsters	-	-	-	-	S
Front seat height manually adjustable	S	S	S	S	-
Individually heated front seats	-	-	-	S	S
Individually heated outer rear seats	-	-	-	-	S
Driver's seat with 6-way electric adjustment for backrest and lumbar	S	S	S	S	-
Front seats with 12-way electric adjustment, driver's seat with 3 position memory	O	O	O	O	S
Split folding rear seat backrest (60/40), lockable with armrest and load through provision	S	S	S	S	S
<b>Steering wheel</b>					
3 spoke leather rimmed steering wheel	S	S	S	S	-
Sports leather steering wheel with aluminium inserts and 'R36' emblem	-	-	-	-	S
Audio and Multi-Function Display controls	S	S	S	S	S
Gear shift selection paddles	A	A	-	A	S
Height and reach adjustable steering wheel	S	S	S	S	S
<b>Storage</b>					
Centre console storage compartment	S	S	S	S	S
Chillable and lockable glove box with illumination	S	S	S	S	S
Coin tray and 12 volt socket in console	S	S	S	S	S
Door pockets, front and rear	S	S	S	S	S
Front seat backrest storage pockets	S	S	S	S	S
Rear centre armrest with storage and 2 cup holders	S	S	S	S	S
Compartment with lid in roof console	S	S	S	S	S
Trays in dashboard (2)	S	S	S	S	S
Umbrella holder in drivers door	S	S	S	S	S
<b>Trip computer</b>					
Multi-Function Display (MFD Plus) – driving time, trip length, average speed, average and current fuel consumption, distance till empty, speed warning function, audio and convenience display	S	S	S	S	S

Specifications continued

	103TDI Sedan & Wagon	125TDI Sedan & Wagon	147TSI Sedan & Wagon	V6 FSI Highline Sedan & Wagon	R36 Sedan & Wagon
<b>Comfort and Convenience (continued)</b>					
<b>Upholstery</b>					
Verona cloth seats	S	S	S	-	-
Vienna leather	O	O	O	-	-
Napa leather	-	-	-	S	-
San Remo micro fibre/Vienna leather combination upholstery	-	-	-	-	S
<b>Vanity mirrors</b>					
Driver's and passenger's side vanity mirrors	S	S	S	S	S
Illuminated on driver's and passenger's side	S	S	S	S	S
<b>Wipers</b>					
2 speed aero wipers with wash/wipe and vehicle speed sensitive intermittent wipe	S	S	S	S	S
Heated washer jets	-	-	-	S	S
Rain sensor	S	S	S	S	S
Rear window with wash/wipe and intermittent wipe (Wagon)	S	S	S	S	S
<b>Windows</b>					
Power front/rear, with roll-back function, with one-touch up-down	S	S	S	S	S
Remote operated convenience close and open feature	S	S	S	S	S
Sunblind for rear windows	A	A	A	A	A
<b>12V socket</b>					
Centre console	S	S	S	S	S
Rear seat area	S	S	S	S	S
Luggage compartment	S	S	S	S	S
<b>Optional Equipment</b>					
Adaptive Cruise Control (ACC) with Front Assist	O	O	O	O	-
<b>Alloy wheels</b>					
Volkswagen Individual, Chicago 18 x 8" with 235/40 R18 tyres (5)	O	O	O	O	-
Sports suspension (15mm lowered)	-	-	-	-	-
Anti-theft alarm system with interior monitoring and tilt sensor	O	O	O	S	S
<b>Audio</b>					
Dynaudio 600W premium audio system, 10 channel digital amplifier and 10 speakers	O	O	O	O	O
Media Device Interface (MDI) – compatible with iPod®, USB and mini USB	O	O	O	O	O
Fitted in the glove compartment and supplied with USB connection cable. Volkswagen Genuine Accessory iPod® and mini USB connection cables sold separately.	O	O	O	O	O
6 disc CD changer, fitted in the glove compartment	O	O	O	O	O
Available only in conjunction with RNS510 satellite navigation system.	O	O	O	O	O
<b>Automatic tailgate</b>					
Automatic opening and closing of the tailgate via remote or button on tailgate (Wagon)	O	O	O	O	O
<b>Bi-Xenon headlights</b>					
Xenon headlights for high and low beam with static and dynamic cornering lights	O	O	O	O	S
Automatic self levelling and headlight cleaning system	O	O	O	O	S
<b>Child booster seats</b>					
Integrated into outer rear seats with lateral cushion support and removable lateral head restraint. Not available with corn silk beige leather upholstery.	O	O	O	O	-
<b>Electric seats with memory</b>					
Front seats with 12-way electric adjustment, driver's seat with 3 position memory	O	O	O	O	S
Electrically heated and adjustable exterior mirrors, foldable with memory	O	O	O	O	S
Automatic kerb function when reversing, passenger's side exterior mirror	O	O	O	O	S
<b>Electric glass sunroof, slide and tilt adjustable with sunblind</b>					
Front fog lights, mounted in lower bumper	O	O	O	S	-
<b>Metallic / Pearl Effect paint</b>					
Park Assist	O	O	O	O	-
Park Assist, parallel parking assistance	O	O	O	O	-
<b>Satellite navigation system (RNS510)</b>					
High-resolution touch screen display in 16:9 format, 3D map views, integrated 30 GB hard drive and SD card slot, DVD drive for the playback of audio CD/MP3 and video DVD	O	O	O	O	O
Rear View Camera Plus with dynamic guidance lines (Wagon)	O	O	O	O	O
<b>Upholstery</b>					
Vienna leather upholstery with individually heated front seats and heated washer jets	O	O	O	-	-
Walnut wood insert in dashboard combined with brushed aluminium insert in centre console	O	O	O	O	-



## Technical Specifications

Engine	147TSI 2.0 TSI 147kW	103TDI 2.0 TDI 103kW	125TDI 2.0 TDI 125kW	V6 FSI Highline 3.2 V6 FSI 184kW	R36 3.6 V6 FSI 220kW
Type	4 cylinder inline turbo petrol	4 cylinder inline turbo diesel	4 cylinder inline turbo diesel	6 cylinder 'V' petrol	6 cylinder 'V' petrol
Installation	Front transverse	Front transverse	Front transverse	Front transverse	Front transverse
Cubic capacity, litres/cc	2.0/1984	2.0/1968	2.0/1968	3.2/3168	3.6/3597
Bore/stroke, mm	82.5/92.8	81.0/95.5	81.0/95.5	86.0/90.9	89.0/96.4
Max power, kW @ rpm	147 @ 5100 - 6600	103 @ 4200	125 @ 4200	184 @ 6250	220 @ 6600
Max torque, Nm @ rpm	280 @ 1800 - 4700	320 @ 1750 - 2500	350 @ 1750 - 2500	330 @ 2750 - 3750	350 @ 2400 - 5300
Compression ratio	10.5:1	16.5:1	16.5:1	12.0:1	11.4:1
Fuel system	Bosch Motronic MED 9.1	Bosch EDC 17 with common rail injection	Bosch EDC 17 with common rail injection	Bosch Motronic MED 9.1	Bosch Motronic MED 9.1
Ignition system	Electronic	Compression	Compression	Electronic	Electronic
Exhaust emission control	Two three-way catalytic converters with Lambda control; Exhaust gas recirculation	Exhaust gas recirculation with oxidising catalytic converter and diesel particulate filter	Exhaust gas recirculation with oxidising catalytic converter and diesel particulate filter	Three-way catalyst with lambda control; Exhaust gas recirculation	Two three-way catalytic converters with lambda control; Exhaust gas recirculation
Emission level	EU IV	EU IV	EU IV	EU IV	EU IV
Fuel type (Recommended)	Premium unleaded 98 RON	Diesel 51CZ	Diesel 51CZ	Premium unleaded 98 RON	Premium unleaded 98 RON
Fuel tank capacity, litres	70	70	70	70	70

Transmission	6 Speed Auto	6 Speed DSG	6 Speed DSG	6 Speed DSG	6 Speed DSG
Driven wheels	Front wheel drive	Front wheel drive	Front wheel drive	4MOTION all wheel drive	4MOTION all wheel drive
<b>Performance</b>					
0 – 100 km/h, Seconds	7.8 Both Variants	9.8 (Sedan) 10.1 (Wagon)	8.6 (Sedan) 8.8 (Wagon)	6.9 (Sedan) 7.2 (Wagon)	5.6 (Sedan) 5.8 (Wagon)
<b>Fuel Consumption*</b>					
Combined, L/100km	8.7 (Sedan) 9.0 (Wagon)	6.4 (Sedan) 6.5 (Wagon)	6.5 (Sedan) 6.6 (Wagon)	10.2 Both Variants	10.7 Both Variants
Urban, L/100km	12.3 (Sedan) 12.7 (Wagon)	8.2 (Sedan) 8.3 (Wagon)	8.2 (Sedan) 8.4 (Wagon)	14.3 Both Variants	14.9 Both Variants
Extra Urban, L/100km	6.6 (Sedan) 6.9 (Wagon)	5.4 Both Variants	5.5 (Sedan) 5.6 (Wagon)	7.9 Both Variants	8.3 Both Variants
CO <sub>2</sub> emission g/km	207 (Sedan) 213 (Wagon)	169 (Sedan) 171 (Wagon)	172 (Sedan) 175 (Wagon)	243 Both Variants	254 Both Variants

\* Fuel consumption figures according to Australian Design Rule (ADR) 81/02.

The driving style, road and traffic conditions, environmental influences and vehicle condition can in practice lead to consumption figures which may differ from those calculated with these standards.

## Technical Specifications continued

Running Gear	147TSI	103TDI & 125TDI	V6 FSI Highline	R36
Suspension	Independent, MacPherson struts with lower wishbones and coil springs. Anti-roll bar.			
Front axle	Independent, MacPherson struts with lower wishbones and coil springs. Anti-roll bar.			
Rear axle	Independent, four-link with coil springs. Anti-roll bar. Sports suspension lowered 25mm (R36)			
Steering	Electro-mechanical power assisted rack & pinion steering			
Brake systems	Anti-lock Braking System (ABS) with Electronic Brake-pressure Distribution (EBD), Brake Assist and Electronic Stabilisation Program (ESP)			
Brakes	Ventilated Discs			
Front	Discs (Ventilated Discs V6 FSI Highline and R36)			
Rear	Discs (Ventilated Discs V6 FSI Highline and R36)			
Turning Circle (m)	11.4			
<b>Weights</b>				
Tare Mass Kg	1506 (Sedan) 1587 (Wagon)	1526 (Sedan) 1587 (Wagon)	1666 (Sedan) 1726 (Wagon)	1681 (Sedan) 1747 (Wagon)
Towing Capacity kg	1500			
Braked	1500	1500	1500	1500
Unbraked	740 (Sedan) 750 (Wagon)	740 (Sedan) 750 (Wagon)	740 (Sedan) 750 (Wagon)	740 (Sedan) 750 (Wagon)

## Dimensions

Exterior Dimensions <sup>^</sup>				
Overall length mm	4765 (4774)	4765 (4774)	4765 (4774)	4806 (4820)
Width mm	1820	1820	1820	1820
Height mm	1472 (1517)	1472 (1517)	1472 (1517)	1447 (1456)
Wheelbase mm	2709	2709	2709	2709
Track mm				
Front	1552	1552	1552	1548
Rear	1551	1551	1551	1558
Luggage Area Dimensions <sup>^</sup>				
Volume L				
Rear seat upright	565 (603)	565 (603)	541 (588)	541 (588)
Rear seat folded	(1731)	(1731)	(1641)	(1641)
Floor length mm				
Rear seat upright	1164 (1132)	1164 (1132)	1164 (1132)	1164 (1132)
Rear seat folded	1974 (1956)	1974 (1956)	1974 (1956)	1974 (1956)
Maximum width mm	1412 (1428)	1412 (1428)	1412 (1428)	1412 (1428)
Width between wheel arches mm	1014 (1000)	1014 (1000)	1014 (1000)	1014 (1000)
Height mm	409 (463)	409 (463)	409 (442)	409 (442)

<sup>^</sup> (Wagon figures in brackets)



## Colours and Upholstery

### Colours



Deep Black Pearl Effect



Arctic Blue Silver Metallic



Candy White<sup>^</sup>



Mocca Anthracite Pearl Effect



Reflex Silver Metallic



Granite Metallic



Biscay Blue Pearl Effect



Silver Leaf Metallic



Icelandic Grey Pearl Effect

Please note: Metallic and Pearl Effect paint are optional at extra cost excluding R36. The print process does not allow for exact reproduction of the exterior or the upholstery colours. For further details, please contact your Volkswagen Dealer.

### Please contact your Volkswagen Dealer for further information on colours and upholstery combinations.

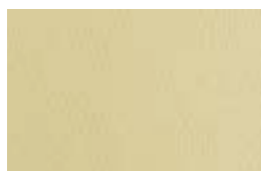
### Interior Trims

#### Standard Cloth – 147TSI, 103TDI and 125TDI Passat



Black Cloth

#### Leathers – Passat\*



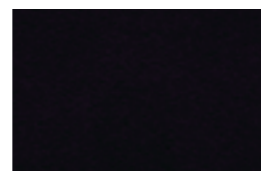
Corn Silk Beige Leather



Black Leather



Latte Macchiato  
'San Remo' micro fibre /  
Vienna leather



Black  
'San Remo' micro fibre /  
Vienna leather

#### Key

Available for 147TSI, 103TDI, 125TDI and V6 FSI Highline only

Standard for R36 only

\* Leather is optional at extra cost for 147TSI, 103TDI, 125TDI models and standard for the V6 FSI Highline.

<sup>^</sup> Candy White is only available for R36 in combination with the optional electric glass sunroof at additional cost.

## Owning a Volkswagen

### Volkswagen New Vehicle Warranty

Every new Volkswagen passenger vehicle is covered by a 3-year/100,000km (whichever occurs first) manufacturer's warranty, which includes Volkswagen Assist (24hr roadside assistance). Every new Volkswagen passenger vehicle is also covered by a 3-year paintwork and 12-year anti-corrosion perforation warranty.

### Volkswagen Assist – 24 Hour Roadside Assistance

As a valued customer, you can be assured that wherever you travel within Australia, you will have access to roadside assistance, 24 hours a day, 365 days a year. This is complimentary for the duration of the vehicle's original Volkswagen warranty period. You will receive help in the event of a breakdown or accident and if required, your vehicle will be mobilised or transported to an Authorised Volkswagen Repair Centre. As a Volkswagen owner you will also have access to the additional benefits of accommodation and car rental if your vehicle cannot be mobilised within 24 hours, when you are over 100kms away from home. Volkswagen Roadside Assist can also be renewed at the expiry of the original warranty, ensuring ongoing coverage for your vehicle.

### Volkswagen Extended Warranty

To give you added peace of mind and the assurance of added security, you have the option to extend the factory warranty to suit your ownership cycle. If your Volkswagen was purchased new by you, we can offer you a 36 month/60,000km extension on your already existing Volkswagen manufacturers Warranty. Alternatively if your vehicle is already outside the Volkswagen manufacturers warranty period we can also offer you an extension of your factory warranty. Have the assurance that your Volkswagen remains a Volkswagen. For further information regarding warranty and extending your vehicles factory warranty, please consult your local Volkswagen dealer, refer to your owner's handbook or visit [www.volkswagen.com.au](http://www.volkswagen.com.au).

### Volkswagen Service

Your Authorised Volkswagen Service Centre is part of Volkswagen's global Quality Management System, ensuring all dealers are certified to ISO 9001:2000 – an internationally recognised Quality Standard. Authorised Volkswagen Service Centres have factory trained Technicians equipped with the very latest diagnostic equipment, specialist tooling and Volkswagen Genuine Parts. An Authorised Volkswagen Service Centre undertakes work in accordance to factory specified guidelines and maintenance schedules.

### Volkswagen Genuine Parts®

Volkswagen Genuine Parts® are designed for your vehicle and approved by Volkswagen, with particular regard to safety. The workmanship, dimensional accuracy and materials used in these parts comply with factory specifications. To ensure safety and reliability, Volkswagen recommends the use of Volkswagen Genuine Parts®. Volkswagen Authorised Dealers offer a 2-year warranty on Genuine Parts from the date of purchase.

### Volkswagen Finance

Buying, Borrowing or Leasing, Volkswagen Finance will certainly make you think differently about financing and insuring your new Volkswagen. Committed to meeting the needs of Volkswagen drivers, across Australia, we offer a range of leasing, financing and insurance products, each with distinct advantages depending on your specific circumstances. Our packages are personalised to suit your individual requirements. You design your plan so that it meets your budgeting needs and can rest assured that there will be no surprises along the way. Speak to your local participating Volkswagen Dealer today to put together a financial solution that best suits your lifestyle.

## Glossary

### 4MOTION

An all-wheel-drive system that provides the best possible traction at all road speeds, in all weather and road conditions. An electronic Haldex clutch responds to traction losses at the front and rear axles and directs torque to the axle with the best traction.

### Adaptive Chassis Control

The electrically controlled dampers of adaptive chassis control adjust the damper forces to the road and the particular driving situation (braking, steering). Using a button located on the centre console, the driver selects between three damper settings. In addition, the steering feel is adapted to the selected setting.

Starting from the normal setting, the customer can change the basic character of the car towards sporty or more comfort-oriented driving. In SPORT and COMFORT settings, the corresponding name is illuminated in the button. In NORMAL setting, only the shock absorber symbol is illuminated. In all settings, the adaptive chassis control adjusts the damping to the particular driving situation (up till one thousand times per second) which means it offers an optimum level of driving comfort and enjoyment at all times. Particularly on windy roads and poor surfaces, using adaptive chassis control offers sporty and yet comfortable driving.

### Adaptive Cruise Control (ACC)\*

Adaptive Cruise Control (ACC) is an extension of the conventional cruise control system with advanced capabilities based on a radar sensor. When ACC is activated, the vehicle automatically brakes and accelerates in a speed range set by the driver.

If the Passat approaches a slower vehicle, the ACC brakes the car to the same speed and maintains the pre-selected distance. Even when a vehicle pulls into the same lane in front of you or slows, your vehicle is automatically decelerated to the pre-selected distance. If the vehicle ahead moves out of your lane, the Passat then accelerates up to the preset desired speed.

Deceleration of the vehicle may take place via intervention in the engine management system. If deceleration via engine torque is not sufficient, brake intervention takes place, braking the vehicle to a standstill if the traffic situation necessitates. If the necessary deceleration exceeds 30 percent of the maximum deceleration, visual and acoustic warning signals (Front Assist) instruct the driver to operate the brakes.

Adaptive Cruise Control (ACC) cannot replace the driver's assertiveness. The driver is still legally responsible for the vehicle and must monitor the speed and distance in relation to other vehicles. The ACC system does not react to stationary obstacles and oncoming vehicles. The ACC system should not be used on winding roads or in adverse weather conditions such as heavy rain.

### Anti-lock Braking System (ABS)

When braking, wheel speed sensors measure the road wheel speed and should one or more wheels start to lock the ABS system reduces brake pressure to that wheel. This prevents the wheels from locking during heavy or emergency braking, enabling the vehicle to remain steerable.

### Anti-Slip Regulation (ASR)

ASR improves driving and steering characteristics by preventing the driven wheels from spinning under acceleration. When a difference in driving wheel speed is detected (i.e. when one wheel starts to spin due to differences in road surfaces, e.g. due to water or dirt) the system automatically reduces engine torque. ASR is a switchable traction control system.

\*Optional equipment at extra cost



## Glossary (continued)

### Auto Hold function

As soon as the vehicle comes to a complete stop, the ABS hydraulic unit stores the vehicles final braking pressure. So even when you take your foot off the brake pedal, all four wheels brakes remain applied, providing increased comfort in stationary traffic. This function is released automatically when you drive off again.

### Brake Assist

During emergency braking, Brake Assist aids the driver by increasing the brake pressure automatically to a level exceeding the locking limit. The ABS is thus quickly brought into the operating range, which enables maximum vehicle deceleration to be achieved.

### Direct Shift Gearbox (DSG)

DSG is a manual gearbox in which the gearshifts are controlled electronically. What makes the DSG unique is that it has 2 separate gear sets operated by 2 wet multi-plate clutches. The benefit of 2 gear sets and 2 multi-plate wet clutches is that one gear set and clutch is engaged driving the vehicle with the second clutch having already pre-selected the next gear awaiting for power to be transferred. As the next gear has already been pre-selected prior to power being applied, the gear change only takes 3-4 100ths of a second. There is virtually no interruption to power, traction or acceleration. The DSG also offers Tiptronic gear selection and sports mode.

### Electronic Brake-pressure Distribution (EBD)

Electronic, more sophisticated means of regulating the ratio of front/rear brake pressure. Settings are varied according to driving and load conditions to ensure each wheel is braked to the optimum extent.

### Electronic Stabilisation Program (ESP)

ABS and ASR traction control systems are integrated into the Electronic Stabilisation Program (ESP). In short, ESP helps ensure that the vehicle goes where you steer it even in extreme driving conditions. The ESP system constantly compares the actual movement of the vehicle with pre-determined values and should a situation arise where the vehicle starts to skid, ESP will apply the brakes to individual wheels and automatically adjust the engine's power output to correct the problem. ESP prevents the vehicle from losing control when trying to avoid an accident, for example. It also prevents spinning off on a curve due to either understeer or oversteer.

### Front Assist\*

The Front Assist ambient traffic monitoring system uses a radar sensor to detect critical distance situations and thus help to shorten the braking distance, reducing the risk of a rear-end collision.

The system warns the driver of a dangerous situation in two stages. Preliminary warning – A visual warning appears in the instrument panel simultaneously an acoustic signal is given. At the same time the Brake Assist system is switched to 'increased sensitivity'. Main warning – If the driver does not react, the Brake Assist system is prepared to 'maximum sensitivity' and a brief braking jolt is activated to draw the driver's attention to the risk of a collision.

Front Assist cannot replace the driver's assertiveness. The driver is still legally responsible for the vehicle and must monitor the speed and distance in relation to other vehicles. The braking jolt does not reduce the speed of the vehicle. The Front Assist system does not activate at a vehicle speed of less than 30km/h.

### Park Assist\*

Park Assist actively helps the driver when reversing into parallel parking spaces. The system works by using sensors mounted either side of the front bumper together with parking distance sensors front and rear. To parallel park the driver needs to press the Park Assist button and use the appropriate indicator before the car passes the potential parking space. Sensors in the front bumper then scan the size of the parking space as the car is driven slowly past and the driver is alerted if the parking space is big enough. If there is sufficient space, the driver stops the car, selects reverse and lets go of the steering wheel.

Park Assist will alert the driver of the intended reverse path in the Multi-Function Display, within the driver's field of vision. Park Assist then actively supports the driver by taking over the steering control and parks the vehicle in the available space using the ideal course. The driver can however take over the control of the steering at any time and end the automatic parking procedure. The system can reverse into parking spaces on both the left hand and right hand side of the road, for example on one way streets.

Park Assist cannot replace the driver's attentiveness. The driver is still legally responsible for the vehicle. If the driver notices a risk that pedestrians, other vehicles or objects could be damaged or if they are uncertain of the risk, they will need to react accordingly and stop the vehicle, ending the function.

\*Optional equipment at extra cost

Volkswagen is distributed by Volkswagen Group Australia Pty Ltd, The Lakes Business Park, 6 Lord Street, Botany, NSW 2019. ABN 14 093 117 876. Specifications are as planned at February 2009, for Model Year 2009 and are subject to change without notice or obligation. Cars and accessories shown may not depict Australian specifications. Fuel consumption figures according to Australian Design Rules (ADR) 81/01. All Volkswagen approved parts and accessories are warranted for 2 years/unlimited kilometres. All information in this brochure is correct at the time of publication, however variations may occur from time to time and Volkswagen, in so far as it is permitted by law to do so, shall not be liable in any way as a result of any reliance by any person on anything contained in this brochure. The colours shown in this brochure are indicative only and may vary from actual items owing to the printing process. Authorised Volkswagen dealers will provide up-to-date information on model application, design feature, prices and availability on request.

Volkswagen Insurance & Volkswagen Extended Warranty are provided by Allianz Australia Insurance Limited (Allianz), AFS Licence No. 234708, ABN 15 000 122 580. In arranging this insurance Volkswagen Financial Services Australia Limited, ABN 20 097 071 460 & Volkswagen Group Australia Pty Ltd, ABN 14 093 117 896 and the authorised dealers act as agents of Allianz and not as your agent. Volkswagen Finance is a trading name of Volkswagen Financial Services Australia Limited. Locked Bag 5009, Alexandria NSW 2015. Tel: 02 9695 6311.





**Das Auto.**

# **Volkswagen Passat**

**March 2009**

**Publication: VGA4050F**

**Internet: [www.volkswagen.com.au](http://www.volkswagen.com.au)**