



Das Auto.

## Volkswagen Polo



## The Volkswagen Philosophy.

Innovation. Responsibility. Value. At Volkswagen we pride ourselves on this set of beliefs. So when you make the Volkswagen choice you can be assured that you have chosen a car with this creed at the very core of its inception, its development, and its realisation.

At Volkswagen we have combined the power of innovation with exceptional design to deliver a superior driving experience. Superb technologies such as our new low emission TSI petrol and TDI diesel engines not only offer an enhanced driving experience, but significantly reduce both carbon emissions and fuel consumption.

Responsible, efficient environmental considerations such as this not only save you money, but ultimately the planet's precious resources, and is just one example of the many commitments that Volkswagen has made to reduce its carbon footprint.

We are proud of the reputation we have earned for value. A Volkswagen vehicle offers safety, reliability and comfort, making it outstanding value for money. With trusted and timeless German engineering our models are the perfect vehicles for you and your family.









## Polo.

Smart. Sexy. Stylish. You can see it all, with just one glance at the Polo. It's a car that's a class above its class. Styled to endure. Engineered to last. With new levels of safety as standard and an exciting range of engines, Polo is the small car with big car credentials. In rigorous Australian New Car Assessment Program (ANCAP) crash rating tests, the Polo achieved a maximum 5 star safety rating. Built with Volkswagen's legendary reputation for quality, reliability and safety. Polo is the car for now. And the car for the future.



This vehicle has been awarded a maximum 5 Star Rating by ANCAP.



**WORLD CAR OF THE YEAR**  
**WORLD CAR AWARDS**

The Polo was honoured as the 2010 World Car of the Year as chosen by international automotive journalists from 25 countries.





## Design.

Take a look at the Polo. With its strong horizontal lines and athletic shape, it exudes confidence. From the smart stylish lines and finishes to the precision surfaces, this car oozes urban appeal and contemporary quality.

Precise, clean and uncluttered lines dominate the Polo's exterior design. The grille and sleekly shaped headlights emphasise the width, enhancing the car's low centre of gravity. The body-coloured bumpers sit over the large black lower intake grille, giving the Polo a purposeful and determined stance.

From the side, strongly defined lines and sills connect the sculptured wheel arches. While its shoulder line emphasises its clearly masculine appearance. Pronounced side skirts and streamlined side mirrors make a bold statement and enhance its aerodynamic performance.

The wide track look of the Polo extends to its rear. Distinctive tail lights sit high in the Polo's broad shoulder, reinforcing the impression of solidity. Along its top edge is an integrated roof spoiler, while the tailgate extends right down to the body-coloured bumper.





## Technology.

Volkswagen's constant aspiration for excellence means that affordable innovative technology is at your fingertips in every model within our product range. With technical expertise and the power of innovation, Volkswagen brings moving ideas to the road.

### TSI Technology. A miracle of performance.

TSI describes Volkswagen's twin or single-charged petrol engines with direct injection. This innovative engineering has created high tech engines boasting excellent torque and power output, combined with lower fuel consumption and emissions.

The Polo TSI engine is an innovative 1.2 litre unit that saves petrol while delivering impressive power and performance thanks to the turbocharger and direct petrol injection. A turbocharger compresses the air required for combustion. Compared with a naturally aspirated engine with the same displacement, a turbocharged engine can produce higher power and torque, as well as being highly efficient.

### TDI Technology

Volkswagen's cutting-edge TDI engines with Diesel Particulate Filters feature Common Rail technology – injecting precise amounts of fuel at exceedingly high pressure. The result is a cleaner burning engine with exceptional fuel economy, impressive torque and compelling performance.



### Direct Shift Gearbox (DSG)

DSG is a new and advanced 7-speed transmission in which the clutch and gearshift are controlled electronically. What makes DSG unique is that the next gear is already pre-selected and awaiting power to be transferred, resulting in a gear change that takes only 3-4 hundredths of a second. The benefits are virtually no interruption to power, traction or acceleration, and additional flexibility. Furthermore, because it ensures optimum transmission of the engine power, DSG provides excellent fuel consumption and driving satisfaction.

### Hill-Start Assist

Hill-start assist holds the vehicle stationary for 1.5 seconds on hills with an incline greater than 5 percent, when the foot brake is released, by temporarily locking the brake pressure. This intelligent feature provides a comfortable hill start, which importantly avoids any rolling back.





## Safety.

At Volkswagen, safety has always been as important to us, as it is to you. And so you will find both active and passive safety systems throughout the Polo. This is a car created with your personal safety foremost in our minds. The proof is in the results of independent international testing. In rigorous Australian New Car Assessment Program (ANCAP) crash rating tests, the Polo achieved a maximum 5 star safety rating.

It all starts with the Polo's rigid body structure. Its lightweight construction is reinforced with hardened steel, creating a solid passenger cell that gives occupants maximum protection in an accident. Surrounding you are body panels that crumple on impact, absorbing the energy of the impact and giving you maximum protection.

In an accident, the Polo's safety features will work together to protect you. Depending on the severity of the impact, front seat belt tensioners will hold you firmly, while up to six airbags will deploy to cushion you from harm. Even after the event, the Polo's intelligent safety systems keep working to protect you, automatically activating the hazard warning lights, unlocking the doors, switching on the interior lights and deactivating the fuel pump. Pedestrians will also be safer when you drive a Polo. The deformable bonnet has been designed to minimise injuries in the event of a collision.



This vehicle has been awarded a maximum 5 Star Rating by ANCAP.

## Active Safety - Everything designed to help prevent accidents from happening.

### Anti-lock Braking System (ABS)

When braking, wheel speed sensors measure the road wheel speed and should one or more wheels start to lock the ABS system reduces brake pressure to that wheel. This prevents the wheels from locking during heavy or emergency braking, enabling the vehicle to remain steerable.

### Anti Slip Regulation (ASR)

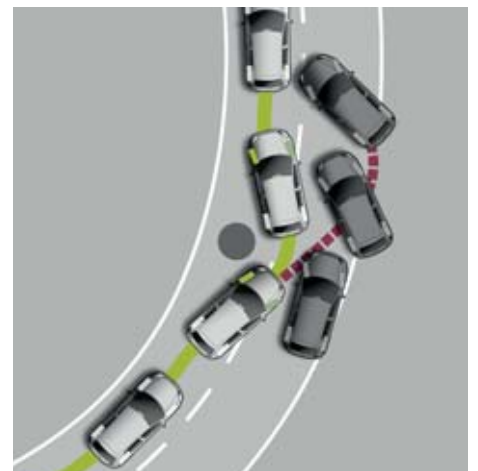
ASR is a switchable traction control system that prevents the wheels from spinning under acceleration by intervening in the engine management system and reducing engine torque when necessary.

### Brake Assist

During emergency braking, Brake Assist aids the driver by increasing the brake pressure automatically to a level exceeding the locking limit. The ABS is thus quickly brought into the operating range, which enables maximum vehicle deceleration to be achieved.

### Electronic Differential Lock (EDL)

EDL improves driving and steering characteristics when accelerating on road surfaces where each wheel has a different degree of traction. The system operates automatically and is combined with the ABS system. Using the ABS wheel sensors, EDL monitors the speed of the individual driving wheels. When one wheel starts to spin due to differences in road surfaces, the system brakes the spinning wheel, transferring engine power to the wheel with the best traction.



### Electronic Stabilisation Program (ESP)

ESP helps ensure that the vehicle goes where you steer it, even in extreme driving conditions. The ESP system constantly compares the actual movement of the vehicle with carefully pre-determined values. Should a situation arise in which the vehicle starts to skid, ESP will apply the brakes to individual wheels and automatically adjust the engine's power output to correct the problem. It also minimizes the likelihood of spinning off on a curve due to understeering or oversteering.



## **Passive Safety - Design measures taken to protect the occupants of vehicles from injury, or to reduce the risk of injury.**

### **Crumple Zones**

Front and rear crumple zones absorb the energy of an impact and divert the resulting forces away from the secure passenger safety cell.

### **Safety Optimised Head Restraints**

Safety Optimised Head Restraints on the front seats are optimally positioned and specially contoured to help reduce whiplash injuries. In the event of an accident, excellent protection is achieved via the seatback controlling upper body movements, and this is balanced with head movements being controlled via the head restraints.

### **Airbags**

Six airbags (twin front, side and curtain) are standard features. Airbags combine with the seat belts to help reduce the risk of severe head and chest injuries in collisions. When inflated, airbags cushion the head and upper body and distribute the resulting loads over as large an area as possible.

### **Seatbelts**

Front seat passenger seatbelts are equipped with belt pre-tensioners and belt force limiters. Belt tensioners tighten the seatbelt on impact, pulling it closer to the occupant's body, ideally positioning them for airbag inflation. Belt force limiters reduce seat belt forces on front seat occupants and, in conjunction with belt tensioners and airbags, lessen the risk of upper body injuries. Three-point seatbelts are fitted to all seats, and three child seat anchor points are fitted in the rear.



## Interior.

The Polo's interior has been designed to cushion you in comfort and provide everything that you and your passengers will need at your fingertips. From the moment you slip into the driver's seat, you will appreciate the quality of the exquisite interior finish and high level of appointments.

The cabin is whisper quiet, enabling you to focus on the creature comforts that surround you. Striking white illumination emanates from behind the sculptured 3-spoke steering wheel, making it both easy on the eye and easy to read in all lighting conditions. Plug your favourite MP3 player into the auxiliary input socket or enjoy the RCD310 radio with MP3 compatibility and 6 speakers. The Polo's spacious cabin accommodates five adults with ease. 60/40 split folding rear seats fold to create a level cargo floor in the luggage area, which can be set at two heights.

The Polo's centre console angles towards the driver for maximum ergonomic comfort. Dashboard surfaces are sumptuous and soft to the touch. While chrome trims bring a new level of refinement to the Comfortline's air vents.

Enjoy the sensation of taking hold of the sculptural 3-spoke steering wheel and gear knob and take comfort in the heat-insulated glass. Even serve your passengers a cool drink from the chillable glove compartment, with front and rear cup holders abound.









## The Polo Range.

The Polo comes with a choice of petrol engines including Volkswagen's renowned TSI direct injection petrol technology or TDI Common Rail turbo diesel engine. Coupled with either manual or Volkswagen's unique Direct Shift Gearbox (DSG) transmissions, they deliver exhilarating performance and impressive fuel efficiency.

Setting a new standard in the light car class, each model in the Polo range combines striking design and uncompromising quality. Active safety systems include Electronic Stabilisation Program (ESP) and an Anti-lock Braking System (ABS) with Brake Assist. Passive safety is also considered with six airbags and front safety optimised head restraints as standard.

Comfort and convenience are at your fingertips via the RCD310 radio system with 6-speaker stereo and MP3 compatibility, digital fuel gauge, semi-automatic air conditioning and an auxiliary input socket for external audio devices such as an MP3 player. All are included in the standard list of specifications. While remote central locking, integrated indicators in the door mirrors and front power windows complete the package.

## **Trendline. Distinctive quality with innovative technology in a highly impressive package.**

The 3-door Polo Trendline boasts an impressive package of standard features, including the RCD310 radio system with MP3 compatibility, remote central locking, front power windows, semi automatic air-conditioning and an auxiliary input socket for external audio devices such as an MP3 player. Its 1.4 litre petrol engine delivers 63kW of power and 132Nm of torque while consuming just 6.0 litres of petrol per 100km.\* It comes with your choice of a 5-speed manual or optional 7-speed DSG transmission and a list of standard safety features including no less than six airbags, Electronic Stabilisation Program (ESP), ABS brakes with Brake Assist, Electronic Differential Lock (EDL) and Anti-Slip Regulation (ASR) traction control.

\*7-speed DSG, combined city/highway driving as per Australian Standard ADR 81/02.











## 77TSI Comfortline. Arresting finesse and efficient performance.

The 77TSI Comfortline cocoons you in style and surrounds you with a new level of standard features. Slide into the cloth seating, grip the multi-function leather steering wheel and take a look at the multi-function display, giving you everything you need to know at a glance. Reach out and feel the soft touch dash and enjoy the convenience of cruise control plus the comfort of a front centre armrest. The 77TSI features a 1.2 litre TSI petrol engine delivering 77kW of power and 175Nm of torque yet boasting fuel consumption of just 5.5L/100km.\* It comes with your choice of a 6-speed manual or optional 7-speed DSG auto transmission and an impressive list of standard safety features, including no less than six airbags, Electronic Stabilisation Program (ESP), ABS brakes with Brake Assist, Electronic Differential Lock (EDL) and Anti-Slip Regulation (ASR) traction control.

\*Combined city/highway driving as per Australian Standard ADR 81/02.



Stylish 15" Lakeside alloy wheels are standard on the 77TSI and 66TDI Comfortline models.

## **66TDI Comfortline. Impressive torque performance with remarkable efficiency.**

The 66TDI Comfortline boasts impressive fuel economy and doesn't compromise on style. Chrome interior highlights, front and rear power windows, distinctive headlight design and an adjustable boot floor height are just a few of the features that evoke enthusiasm. The 66TDI features a 1.6 litre Common Rail turbo diesel engine fitted with a diesel particulate filter. It delivers 66kW of power with a robust 230Nm of torque yet boasts a miserly fuel consumption of just 4.6L/100km.\* It comes with your choice of a 5-speed manual or optional 7-speed DSG auto transmission and an impressive list of standard safety features, including no less than six airbags, Electronic Stabilisation Program (ESP), ABS brakes with Brake Assist, Electronic Differential Lock (EDL) and Anti-Slip Regulation (ASR) traction control.

\*7-speed DSG, combined city/highway driving as per Australian Standard ADR 81/02.







## Optional Equipment.

Alcantara/leatherette upholstery with heated front sports seats

Polo Comfortline models offer an optional Alcantara/leatherette seating package with heated front sports seats.



### Anti-theft Alarm System

The Polo's Anti-theft alarm system monitors the vehicle's interior and has a warning horn that operates independently of the car's own electrical system and a time-controlled alarm that sounds in response to the unauthorised opening of a door. Locking the car primes the alarm, unlocking the car turns it off. There's also a tilt sensor that detects when attempts to tow the vehicle occur.

## Volkswagen Audio Package.

### RCD510 Audio System Ⓞ ⓐ

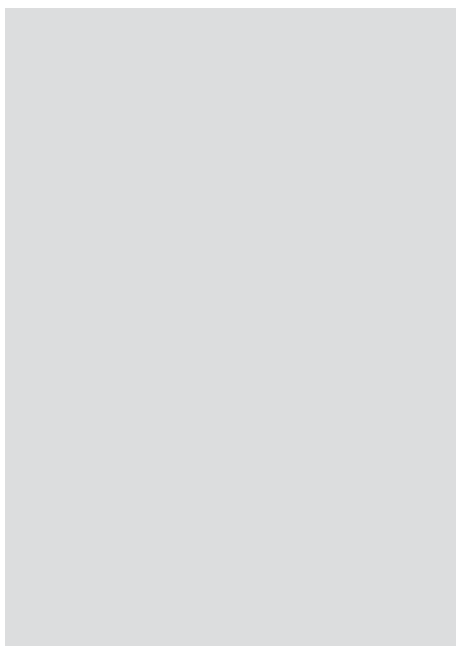
The RCD510 audio system features a high resolution large colour TFT display with touch screen operation, a 6-disc CD changer with MP3 compatibility as well as an SD memory card slot.



### Media Device Interface (MDI) Ⓞ ⓐ

This sophisticated new interface facilitates connection to USB audio devices, data storage devices and Apple iPod®\*. The MDI allows audio files to be operated via the in-dash audio system without the need to input controls via the media device itself. The MDI system also provides a charging function.

\* iPod® is a registered trademark of Apple Inc.



## Optional Comfort Packages available for Trendline and Comfortline.

### Multi-Function Leather Steering Wheel (standard for Comfortline)

The redesigned, leather covered 3-spoke Multi-Function steering wheel is one of many creature comforts that make every drive pleasurable.

### Rain Sensing Wipers

The Polo's rain sensor automatically regulates the windscreen wipers' intermittent wipe intervals according to the intensity of the rain. The benefits of the rain sensor are comfort and safety. The driver is able to concentrate fully on the road, without having to worry about adjusting the wipe interval.

### Low Tyre Pressure Indicator

The low tyre pressure indicator permanently monitors the tyres, ensuring a high level of safety, and helps the driver to keep a check on tyre pressure. Correct tyre pressure helps to extend the service life of tyres and reduces fuel consumption.



### Multi-Function Display (standard for Comfortline)

The Multi-Function Display informs the driver of trip time and length, speed, fuel consumption and distance till empty.



### Automatic Climate Control Air Conditioning

Automatic climate control air conditioning provides luxurious comfort in every season.





**Front Centre Armrest**  
(standard for Comfortline)

The optional front centre armrest with practical storage compartment adds functionality to the Polo Trendline.



**Automatically Dimming Rear-view Mirror**

Volkswagen's automatically dimming rear-view mirror prevents dangerous rear-approaching headlight glare from disturbing your vision and reduces eye strain and driver fatigue.



**Cruise Control**  
(standard for Comfortline)

The cruise control system is an electronic aid which helps to regulate the vehicle's speed. It provides the driver with greater comfort on long journeys where a constant speed is maintained. It also makes it easier to obey the speed limit.

Optional extras  Feature forms part of the optional Comfort Package available for Trendline  Feature forms part of the optional Comfort Package available for Comfortline

## Optional Sport Package available for Comfortline.

### Dark Tinted Rear Side and Rear Windows

Dark tinted rear side and rear windows provide increased privacy and comfort.

### Sports Suspension

The Sports Package adds sports suspension to Comfortline models for a more engaging driving experience.

### Low Tyre Pressure Indicator

The low tyre pressure indicator permanently monitors the tyres, ensuring a high level of safety, and helps the driver to keep a check on tyre pressure. Correct tyre pressure helps to extend the service life of tyres and reduces fuel consumption.



### 17" Boavista Alloy Wheels

Stylish 17" Boavista Alloy Wheels add charisma to the Comfortline.



Optional extras  Feature forms part of the optional Sport Package available for Comfortline



### Front Fog Lights



Front Fog lights with static cornering function add a sporty element and an additional safety feature.

## Volkswagen Genuine Accessories.

Movement fascinates. In fact, there are few subjects that excite people more, that's because movement is synonymous with freedom. Our comprehensive range of genuine accessories give you the freedom to customise the look and feel of your vehicle to reflect your own personality and individual sense of style.

The product philosophy is simple – to deliver innovative technologies and premium design – right down to the finest detail. Each and every genuine accessory has been designed specifically with the Polo in mind and has been engineered and rigorously tested to ensure that it meets the same high standards of quality as the vehicle itself.

No matter what you choose you can have peace of mind knowing that any genuine accessory fitted by your local Volkswagen Dealer, at the time of your vehicle purchase will be covered by the same warranty as the vehicle itself.

For more information or to experience the full range of genuine accessories designed to suit the Polo, visit your local Volkswagen Dealer.



Sports Body Kit



Roof Bars



Roof Bars & Bicycle Carrier



Ski & Snowboard Holder



Kayak Holder



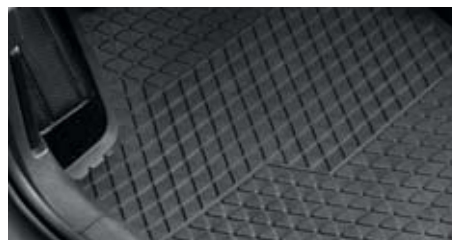
Ski & Luggage Box



Surfboard Holder



Carpet Floor Mats



Rubber Floor Mats



Door Sill Protective Strip



Plastic Boot Tub with dividers



Boot liner



Boot Scuff Plate

Images are for illustration purposes only. Overseas specification vehicles are shown, bicycle, kayak, skis and snowboard not available for purchase from Volkswagen or its dealers.



Roof Spoiler



Mudflaps



Sunblind's rear windows



Rear Chrome Trim



Satellite Navigation RNS510



MEDIA-IN



Towbar Kit



Bluetooth Kits



17" Motorsport Alloy Wheel  
(Black, White, Anthracite)



16" Syenit Alloy Wheel  
(Black, Anthracite)

Images are for illustration purposes only. Overseas specification vehicles are shown.

# Specifications.

## Safety and Security

	<i>Trendline</i>	<i>77TSI Comfortline</i>	<i>66TDI Comfortline</i>
<b>Airbags</b>			
Driver and front passenger airbags	S	S	S
Driver and front passenger side airbags	S	S	S
Curtain airbags, front and rear	S	S	S
<b>Anti-theft</b>			
Electronic engine immobiliser	S	S	S
Alarm system with interior monitoring and tilt sensor	O	O	O
Security coded audio system	S	S	S
Visible Vehicle Identification Number (VIN)	S	S	S
<b>Body</b>			
Door side impact protection	S	S	S
Fully galvanised with 12 year anti-corrosion perforation warranty	S	S	S
Rigid safety cell with front and rear crumple zones	S	S	S
3 door hatch body style	S	–	–
5 door hatch body style	–	S	S
<b>Brakes</b>			
Anti-lock Braking System (ABS)	S	S	S
Brake Assist	S	S	S
Electronic Brake-pressure Distribution (EBD)	S	S	S
Hill Start Assist (HSA)	S	S	S
<b>Child restraint</b>			
Child seat anchor points mounted on rear seat (3)	S	S	S
<b>Entry / warning reflector in front and rear doors</b>			
	S	S	S
<b>Fog lamp, rear</b>			
	S	S	S
<b>Head restraints</b>			
Front safety optimised head restraints, height adjustable	S	S	S
Rear adjustable and removable (3)	S	S	S
<b>Locking</b>			
Remote central locking with deadlock mechanism (separate release for luggage compartment)	S	S	S
2 stage unlocking (programmable)	S	S	S
Automatic locking after takeoff (programmable)	S	S	S
One touch lock / unlock for driver	S	S	S
Child safety locks on rear doors	–	S	S
Fuel filler flap lock / unlock by remote, push to open	S	S	S
<b>Luggage cover, removable</b>			
	S	S	S
<b>Seat belts</b>			
Front height adjustable with pre-tensioners and belt force limiters	S	S	S
Visual and acoustic warning for driver and front seat passenger seat belts not fastened	S	S	S
3 point seat belts for all passengers	S	S	S
<b>Traction control</b>			
Electronic Differential Lock (EDL)	S	S	S
Anti-Slip Regulation (ASR)	S	S	S
Electronic Stabilisation Program (ESP)	S	S	S

S Standard

O Optional extra

A Volkswagen Genuine Accessory (Dealer Fitted)

– Not available

<b>Exterior Equipment/Styling</b>	<i>Trendline</i>	<i>77TSI Comfortline</i>	<i>66TDI Comfortline</i>
<b>Body enhancements</b>			
Body coloured bumper bars, door handles and exterior mirrors	S	S	S
Exposed exhaust tail pipe	S	S	S
Radiator grille highlight in chrome	–	S	S
Rear tailgate trim, chrome	A	A	A
Sports body kit	A	A	A
<b>Paint</b>			
Metallic / Pearl Effect paint	O	O	O
<b>Protection</b>			
Bonnet protector	A	A	A
Headlight protectors	A	A	A
Loading sill protection	A	A	A
Mudflaps, front and rear	A	A	A
Slimline weather shields	A	A	A
<b>Roof</b>			
Bicycle, kayak, ski, surfboard and snowboard holders	A	A	A
Roof bars	A	A	A
Ski and luggage box	A	A	A
<b>Tinted glass</b>			
Heated insulating tinted glass	S	S	S
<b>Towbar</b>			
Towbar with 7-pin flat trailer connector and removable tongue	A	A	A
<b>Wheels</b>			
Steel wheels 14x5" with full wheel trims and 175/70 R14 tyres	S	–	–
Alloy wheels (Lakeside) 15x6" with 195/55 R15 tyres	–	S	S
Alloy wheels (various designs) 16" and 17"	A	A	A
Anti-theft wheel bolts	A	S	S
Spare wheel, full size steel	S	S	S
The spare wheel and tyre is speed restricted for the Comfortline models			
<b>Comfort and Convenience</b>			
<b>Armrest</b>			
Front centre armrest with storage compartment, height adjustable	–	S	S
<b>Air conditioning</b>			
Semi-automatic control	S	S	S
Dust and pollen filter	S	S	S
<b>Console</b>			
Centre console with open storage compartment and 12 volt socket	S	S	S
<b>Cruise control</b>			
	–	S	S
<b>Cup holder</b>			
Front (2)	S	S	S
Rear (1)	S	S	S
Bottle holders in front door pockets	S	S	S
<b>Floor mats</b>			
Front and rear, carpet	A	A	A
Front and rear, rubber	A	A	A
<b>Grab handles</b>			
Soft folding at roof frame (4)	S	S	S

S Standard

O Optional extra

A Volkswagen Genuine Accessory (Dealer Fitted)

– Not available

## Specifications.

### Comfort and Convenience cont.

	<i>Trendline</i>	<i>77TSI Comfortline</i>	<i>66TDI Comfortline</i>
<b>Headlights</b>			
Halogen headlights with clear polycarbonate lens	S	–	–
Halogen twin headlights with clear polycarbonate lens	–	S	S
Headlight-on warning buzzer	S	S	S
Internal headlight range adjustment	S	S	S
Combined headlight and fog light switch	S	S	S
<b>In car entertainment</b>			
AM/FM security coded radio (RCD310) with MP3 compatible CD player	S	S	S
Audio functions mounted on steering wheel	–	S	S
Auxiliary input audio socket in front centre console	S	S	S
Bluetooth® hands free phone kit	A	A	A
Speakers, front (4) and rear (2)	S	S	S
Roof mounted antenna	S	S	S
Volkswagen audio package AM/FM security coded radio (RCD510) with 6½" touch screen display, MP3 compatible SD card slot and 6 disc CD changer, in dash	–	O	O
Media Device Interface (MDI) – compatible with iPod®, USB and mini USB Fitted in the glove box and supplied with USB connection cable. Volkswagen Genuine Accessory iPod®, mini USB and auxiliary input connection cables sold separately			
<b>Instrumentation</b>			
Speedometer & tachometer, electronic odometer and tripmeter, service interval and outside temperature display, digital clock and fuel gauges, high coolant temperature and low fuel warning lights and white adjustable illumination	S	S	S
<b>Interior highlights</b>			
Chrome highlights for parking brake lever knob, steering wheel, air vents, instruments, air conditioning and light switch surrounds	–	S	S
Door sill scuff plates	A	A	A
Gearshift knob in leather	–	S	S
Stainless steel pedal set (for manual only)	A	A	A
<b>Interior lighting</b>			
Interior light with time delay	S	S	S
Passenger reading lights, front (2) and rear (1)	–	S	S
<b>Luggage compartment</b>			
Luggage area tub storage with internal dividers and lid	A	A	A
Load restraining hooks	S	S	S
Luggage compartment light	S	S	S
Luggage compartment protection: moulded foam, rubber or plastic tub	A	A	A
Luggage net	A	A	A
Variable luggage compartment floor level	S	S	S
<b>Mirrors</b>			
Electrically heated and adjustable exterior mirrors	S	S	S
LED turn indicators integrated in exterior mirrors	S	S	S
<b>Parking distance sensors, rear</b>			
	A	A	A
<b>Power steering</b>			
Electro-hydraulic, vehicle speed and steering input sensitive	S	S	S
<b>Seating</b>			
Backrest release for front seats	S	–	–
Height adjustment for driver's seat	S	S	S
Height adjustment for front passenger's seat	–	S	S
Split folding rear seat backrest and seat base (60/40)	S	S	S
<b>Steering wheel</b>			
3 spoke leather rimmed multi-function steering wheel	–	S	S
Height and reach adjustable	S	S	S

S Standard

O Optional extra

A Volkswagen Genuine Accessory (Dealer Fitted)

– Not available



## Comfort and Convenience cont.

	Trendline	77TSI Comfortline	66TDI Comfortline
<b>Storage</b>			
Trays (open) in centre console (2)	S	S	S
Front seat back storage pockets	-	S	S
Chillable glove box	S	S	S
Front door pockets	S	S	S
<b>Sun visors</b>			
Driver and front passenger	S	S	S
<b>Transmission</b>			
7 speed Direct Shift Gearbox (DSG) with Tiptronic function and Sport mode	O	O	O
<b>Trip computer</b>			
Multi-Function Display (MFD) – trip time, trip length, average and current speed, speed warning, average and current fuel consumption and distance till empty	-	S	S
<b>Upholstery</b>			
Cloth	S	-	-
Comfort cloth	-	S	S
Alcantara/leatherette combination seat upholstery with individually heated front sports seats and carpet floor mats, front and rear	-	O	O
<b>Vanity mirrors</b>			
Driver's and passenger's side vanity mirrors	S	S	S
Illuminated on driver's and passenger's side	-	S	S
<b>Windows</b>			
Power front and rear (Comfortline), with roll-back function, driver with one-touch up-down	S	S	S
Remote operated convenience close and open feature	S	S	S
Sunblinds for rear side and rear window	A	A	A
<b>Wipers</b>			
2 speed with wash / wipe and intermittent wipe with 4 position delay	S	S	S
Rear window with wash / wipe and intermittent wipe	S	S	S
<b>12V accessory socket in centre console</b>	S	S	S

## Optional Packages

### Comfort package

Automatic climate control air conditioning			
Automatically dimming interior rear-view mirror			
Cruise control			
Front centre armrest with storage compartment, height adjustable			
Low tyre pressure indicator	O	-	-
Multi-Function Display (MFD)			
Multi-function leather steering wheel			
Rain sensing windscreen wipers			

### Comfort package

Automatic climate control air conditioning			
Automatically dimming interior rear-view mirror			
Low tyre pressure indicator	-	O	O
Rain sensing windscreen wipers			

### Sport package

Alloy Wheels (Boavista) 17x7" with 215/40 R17 tyres (4)			
Dark tinted rear side window and rear window glass, 65% light absorbing			
Front fog lights with static cornering function, mounted in lower bumper			
Low tyre pressure indicator	-	O	O
Lowered sports suspension			
The spare wheel and tyre is speed restricted in combination with the Sport package			

S Standard

O Optional extra

A Volkswagen Genuine Accessory (Dealer Fitted)

- Not available

# Technical Specifications.

	<i>Trendline</i>		<i>77TSI Comfortline</i>		<i>66TDI Comfortline</i>	
<b>Technical Specifications.</b>	<b>1.4 Litre</b>		<b>1.2 Litre</b>		<b>1.6 Litre</b>	
Engine	4 cylinder inline petrol		4 cylinder inline direct injection turbo petrol		4 cylinder inline direct injection turbo diesel	
Type	Front transverse		Front transverse		Front transverse	
Installation	1.4/1390		1.2/1197		1.6/1598	
Cubic capacity, litres/cc	76.5/75.6		71.0/75.6		79.5/80.5	
Bore/stroke, mm	63@5000		77@5000		66@4200	
Max power, kW @ rpm	132@3800		175@1500-3500		230@1750-2500	
Max torque, Nm @ rpm	10.5:1		10:1		16.5:1	
Compression ratio	Magneti Marelli		Bosch Motronic		Simos common rail	
Fuel system	Electronic		Electronic		Compression	
Ignition system	Exhaust gas recirculation, catalytic converter and lambda probes		Exhaust gas recirculation, catalytic converter and lambda probes		Exhaust gas recirculation with oxidising catalytic converter and diesel particulate filter	
Exhaust emission control	EU 5		EU 5		EU 5	
Emission level <sup>^</sup>	Premium unleaded 95 RON		Premium unleaded 95 RON		Diesel 51CZ	
Fuel type (Recommended)	<b>5 speed manual</b>		<b>7 speed DSG</b>		<b>5 speed manual</b>	
Transmission	Front wheel drive		Front wheel drive		Front wheel drive	
Driven wheels	12.1	11.9	9.7	9.7	11.5	11.5
Performance <sup>#</sup>	0 – 100km/h, seconds		0 – 100km/h, seconds		0 – 100km/h, seconds	
Fuel consumption <sup>*</sup>	Combined, L/100km		Combined, L/100km		Combined, L/100km	
Combined, L/100km	Urban, L/100km		Urban, L/100km		Urban, L/100km	
Urban, L/100km	Extra Urban, L/100km		Extra Urban, L/100km		Extra Urban, L/100km	
Extra Urban, L/100km	CO <sub>2</sub> emission g/km		CO <sub>2</sub> emission g/km		CO <sub>2</sub> emission g/km	
CO <sub>2</sub> emission g/km	Fuel tank capacity, L		Fuel tank capacity, L		Fuel tank capacity, L	
Fuel tank capacity, L	Running Gear		Running Gear		Running Gear	
Running Gear	Suspension		Suspension		Suspension	
Suspension	Front axle		Front axle		Front axle	
Front axle	Rear axle		Rear axle		Rear axle	
Rear axle	Steering		Steering		Steering	
Steering	Brake Systems		Brake Systems		Brake Systems	
Brake Systems	Brakes		Brakes		Brakes	
Brakes	Front		Front		Front	
Front	Rear		Rear		Rear	
Rear	Turning circle, m		Turning circle, m		Turning circle, m	
Turning circle, m						

<sup>^</sup> Emission level according to European Regulation (EC) No. 715/2007 and Regulation (EC) No. 692/2008

<sup>#</sup> Please note figures are sourced from overseas data where equipment levels by model variant may vary.

<sup>\*</sup> Fuel consumption figures according to Australian Design Rule (ADR) 81/02.

The driving style, road and traffic conditions, environmental influences and vehicle condition can in practice lead to consumption figures which may differ from those calculated with these standards.

## Technical Specifications cont.

	<i>Trendline</i>		<i>77TSI Comfortline</i>		<i>66TDI Comfortline</i>	
	3 Door		5 Door		5 Door	
	Manual	DSG	Manual	DSG	Manual	DSG
<b>Weights</b>						
Tare vehicle weight Kg	1033	1068	1048	1088	1115	1140
Towing capacity Kg						
Braked*	1000	1000	1000	1000	1000	1000
Unbraked	530	530	530	530	530	530
Towbar load limit Kg	50	50	50	50	50	50
Maximum roof load Kg	75	75	75	75	75	75
<b>Exterior Dimensions</b>						
Overall length mm				4064		
Width mm				1682		
Height mm				1500		
Wheelbase mm				2456		
Track mm						
Front				1464		
Rear				1456		
<b>Interior Dimensions<sup>#</sup></b>						
Headroom mm						
Front				974		
Rear				943		
Interior width mm						
Front				1432/1386		
Rear				1393/1384		
Luggage area volume L						
Rear seat upright ~				(261) 280		
Rear seat folded				952		
Luggage area floor length mm						
Rear seat upright				699		
Rear seat folded				1371		
Luggage area width mm						
At widest point				962		
At narrowest point				942		
Luggage load height mm						
To luggage cover				499		
To roof lining				820		

- Figure in brackets refers to rear seat upright – floor to luggage cover measurement

\* With trailer brakes up to a gradient of 12%

# Please note figures are sourced from overseas data where equipment levels by model variant may vary.

## Colours.



Candy White



Ocean Blue



Savanna Yellow



Flash Red



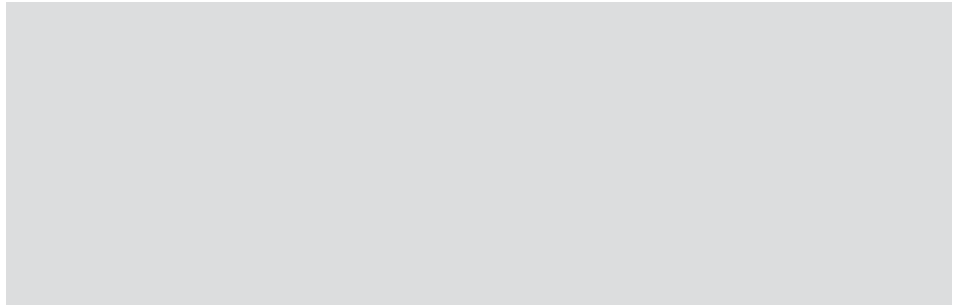
Reflex Silver Metallic



Pepper Grey Metallic



Deep Black Pearl Effect



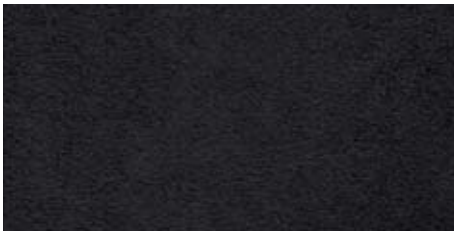
## Upholstery.



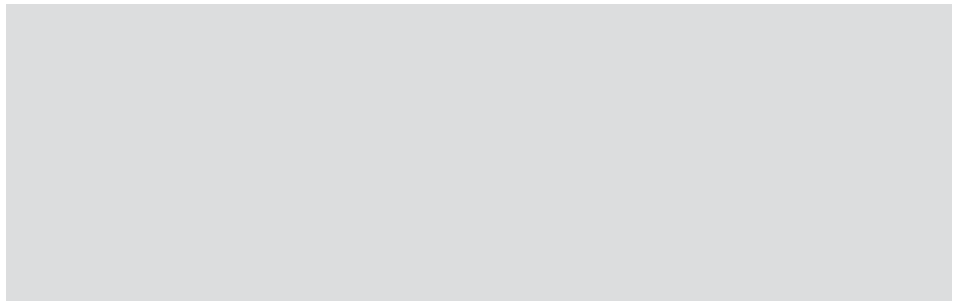
Black Cloth



Black Comfort Cloth



Black Alcantara/Leatherette



Please note Metallic and Pearl Effect paint are optional at extra cost. The print process does not allow for exact reproduction of the exterior or the upholstery colours. For further details please contact your Volkswagen Dealer.

● Standard in Trendline ○ Standard in Comfortline ■ Optional in Comfortline

## Owning a Volkswagen.

### Volkswagen New Vehicle Warranty

Every new Volkswagen passenger vehicle is covered by a 3-year/100,000km (whichever occurs first) manufacturer's warranty, which includes Volkswagen Assist (24hr roadside assistance). Every new Volkswagen passenger vehicle is also covered by a 3-year paintwork and 12-year anti-corrosion perforation warranty.

### Volkswagen Assist – 24 Hour Roadside Assistance

As a valued customer, you can be assured that wherever you travel within Australia, you will have access to roadside assistance, 24 hours a day, 365 days a year. This is complimentary for the duration of the vehicle's original Volkswagen warranty period. You will receive help in the event of a breakdown or accident and if required, your vehicle will be mobilised or transported to an Authorised Volkswagen Repair Centre.

As a Volkswagen owner you will also have access to the additional benefits of accommodation and car rental if your vehicle cannot be mobilised within 24 hours, when you are over 100kms away from home. Volkswagen Roadside Assist can also be renewed at the expiry of the original warranty, ensuring ongoing coverage for your vehicle.

### Volkswagen Extended Warranty

To give you added peace of mind and security, you can choose to extend your warranty to suit your vehicle and ownership cycle. If your Volkswagen is still covered by the existing Volkswagen Manufacturer's Warranty, you can purchase Volkswagen New Vehicle Extended Warranty, providing you coverage on all original Manufacturer's components for up to a further 36 months and 60,000 kilometres, with no payment claim limits.

If you are purchasing a used Volkswagen and the original Volkswagen Warranty has expired, you can purchase Volkswagen Used Vehicle Warranty Insurance, providing selected component protection for up to 36 months and 60,000 kilometres with a generous payment limit of \$2,000 per claim. Have the assurance that your Volkswagen remains a Volkswagen.

Eligibility Criteria apply for both the Volkswagen New Vehicle Extended Warranty and the Volkswagen Used Vehicle Warranty Insurance. For more information regarding Volkswagen New Vehicle or Used Vehicle Extended Warranties and how to enact coverage, please consult your local Volkswagen dealer, refer to your owner's handbook or visit [www.volkswagen.com.au](http://www.volkswagen.com.au) and refer to the relevant Product Disclosure Statement.

### Volkswagen Service

Your Authorised Volkswagen Service Centre is part of Volkswagen's global Quality Management System, ensuring all dealers are certified to ISO 9001:2000 – an internationally recognised Quality Standard. Authorised Volkswagen Service Centres have factory trained Technicians equipped with the very latest diagnostic equipment, specialist tooling and Volkswagen Genuine Parts. An Authorised Volkswagen Service Centre undertakes work in accordance to factory specified guidelines and maintenance schedules.

### Volkswagen Genuine Parts®

Volkswagen Genuine Parts® are designed for your vehicle and approved by Volkswagen, with particular regard to safety. The workmanship, dimensional accuracy and materials used in these parts comply with factory specifications. To ensure safety and reliability, Volkswagen recommends the use of Volkswagen Genuine Parts®. Volkswagen Authorised Dealers offer a 2-year warranty on Genuine Parts from the date of purchase.

### Volkswagen Finance

Whether buying or leasing, Volkswagen Finance will certainly make you think differently about financing and insuring your new Volkswagen. Committed to meeting the needs of Volkswagen drivers, we offer a vast range of products, each with distinct advantages depending on your specific circumstances. We can easily and quickly design a solution to meet your budgeting needs, with no account keeping fees and no surprises along the way. Speak to your authorised Volkswagen Finance dealer today to see how Volkswagen Finance can help you achieve your motoring dream.

### Owning A Volkswagen

Any information or advice contained here does not take into consideration your objectives, financial situation or needs, which you should consider before acting on our recommendations. You should read and consider the Product Disclosure Statement before deciding whether to acquire any product mentioned here. A Product Disclosure Statement (PDS) can be requested from your local Volkswagen Dealer or viewed online at [volkswagen.com.au](http://volkswagen.com.au)

## Glossary.

### Anti-lock Braking System (ABS)

When braking, wheel speed sensors measure the road wheel speed and should one or more wheels start to lock the ABS system reduces brake pressure to that wheel. This prevents the wheels from locking during heavy or emergency braking, enabling the vehicle to remain steerable.

### Anti-Slip Regulation (ASR)

ASR is a switchable traction control system that prevents the driven wheels from spinning under acceleration by reducing engine torque. It is active at speeds above 40km/h.

### Brake Assist

During emergency braking, Brake assist aids the driver by increasing the brake pressure automatically to a level exceeding the locking limit. The ABS is thus quickly brought into the operating range, which enables maximum vehicle deceleration to be achieved.

### Electronic Brake-pressure Distribution (EBD)

Electronic, more sophisticated means of regulating the ratio of front/rear brake pressure. Settings are varied according to driving and load conditions to ensure each wheel is braked to the optimum extent.

### Electronic Differential Lock (EDL)

EDL improves driving and steering characteristics when accelerating on road surfaces where each wheel has a different degree of traction. The system operates automatically and is combined with the ABS system. Using the ABS wheel sensors, EDL monitors the speed of the individual driving wheels. When a difference in driving wheel speed is detected (i.e. when one wheel starts to spin due to differences in road surfaces, e.g. due to water or dirt) the system brakes the spinning wheel, transferring engine power to the wheel with the best traction. EDL is active in forward and reverse and operates up to 40km/h.

### Electronic Stabilisation Program (ESP)

ABS, EDL and ASR traction control systems are integrated into the Electronic Stabilisation Program (ESP). In short, ESP helps ensure that the vehicle goes where you steer it even in extreme driving conditions. The ESP system constantly compares the actual movement of the vehicle with pre-determined values and should a situation arise where the vehicle starts to skid, ESP will apply the brakes to individual wheels and automatically adjust the engine's power output to correct the problem. ESP prevents the vehicle from losing control when trying to avoid an accident, for example. It also prevents spinning off on a curve due to either understeer or oversteer.

### Hill Start Assist (HSA)

Hill Start Assist (HSA) holds the vehicle when the foot brake is released by temporarily locking the brake pressure (for a maximum of 1.5 seconds) to provide comfortable starting-off without rolling back. Hill Start Assist (HSA) operates on inclines greater than 5% and is fitted in combination with manual transmissions and the Direct Shift Gearbox (DSG).

## Volkswagen's Australian Environmental Strategy.

### Steps Towards Sustainability

To Volkswagen Group Australia, sustainability means taking responsibility for the environment, as well as actively participating in the development of society. We believe sustainability offers opportunities for long-term innovations, new approaches, efficient technologies and ground-breaking products. Our organisation has established an Environment Committee to manage our business activities and reduce our environmental impact.

### Carbon Management Strategy

We have developed a Carbon Management Strategy to identify and manage carbon emissions from our business activities. Our fuel usage from company cars and energy usage were calculated to measure our Carbon Footprint, and comprehensive carbon reduction targets have been set. Volkswagen Group Australia aims to downsize its environmental footprint in the future.

### Carbon Management Program

Our range of vehicles has earned a reputation for fuel efficiency. We're working to extend that efficiency throughout our entire operational structure. We've initiated a Carbon Management Program, to recommend changes to achieve emissions reductions. We're making real changes in reducing our carbon footprint.

### Environmentally Friendly Engines

Our TSI twin or single-charged petrol engines achieve impressive fuel efficiency with reduced CO2 emissions. Our TDI diesel engines use less fuel and have lower emissions, with the benefits of high torque and performance. Our diesel particulate filter extracts soot from vehicle exhaust emissions. Numerous engines already fulfill the stringent forthcoming Euro 5 emissions standard.

### Environmentally Friendly Transmission

Our dual-clutch Direct Shift Gearbox (DSG) provides the comfort of a conventional automatic transmission and the dynamic drive of a manual transmission. DSG boasts significantly reduced fuel consumption compared to a conventional automatic transmission. The new 7-speed DSG transmission is the first dual-clutch gearbox with a 'dry' double clutch.



### Mixed Sources

Product group from well-managed forests, controlled sources and recycled wood or fiber  
www.fsc.org Cert no. SGS-COC-2774  
© 1996 Forest Stewardship Council

Volkswagen is distributed by Volkswagen Group Australia Pty Ltd, The Lakes Business Park, 6 Lord Street, Botany, NSW 2019. ABN 14 093 117 876. Specifications are as planned at May 2010, for Model Year 2010 and are subject to change without notice or obligation. Cars and accessories shown may be overseas models. Fuel consumption figures according to Australian Design Rules (ADR) 81/02. All Volkswagen approved parts and accessories are warranted for 2 years/unlimited kilometres. All information in this brochure is correct at the time of publication, however variations may occur from time to time and Volkswagen, in so far as it is permitted by law to do so, shall not be liable in any way as a result of any reliance by any person on anything contained in this brochure. The colours shown in this brochure are indicative only and may vary from actual items owing to the printing process. Authorised Volkswagen dealers will provide up-to-date information on model application, design feature, prices and availability on request.

Volkswagen Insurance & Volkswagen Extended Warranty are provided by Allianz Australia Insurance Limited (Allianz), AFS Licence No. 234708, ABN 15 000 122 580. In arranging this insurance Volkswagen Financial Services Australia Limited, ABN 20 097 071 460 & Volkswagen Group Australia Pty Ltd, ABN 14 093 117 896 and the authorised dealers act as agents of Allianz and not as your agent. Volkswagen Finance is a trading name of Volkswagen Financial Services Australia Limited. Locked Bag 5009, Alexandria NSW 2015. Tel: 02 9695 6311.



**Das Auto.**

# Volkswagen Polo

**May 2010**

**Publication: VGA1926F**

**Internet: [www.volkswagen.com.au](http://www.volkswagen.com.au)**