



Das Auto.

Jetta



Content overview

- 3 Introduction**
- 5 Range overview**
 - 118TSI
 - 118TSI Comfortline
 - 103TDI Comfortline
 - 147TSI Highline
- 15 Exterior**
- 17 Interior**
- 19 Technology**
- 21 Safety**
- 23 In Car Entertainment and Technology**
- 25 Optional Equipment**
- 27 Volkswagen Genuine Accessories**
- 29 Specifications**
- 37 Colours and Upholstery**
- 38 Fuel Saving Tips**
- 39 Jetta Capped Price Servicing**
- 40 Glossary**
- 41 Owning a Volkswagen**
- 42 Corporate Sustainability – Think Blue.**





Welcome to the family





There comes a time in everybody's life when they want to be responsible, settle down and start a family. At Volkswagen we understand that family matters – but so does having a stylish car that has performance and space to match its good looks and comfort. The new Jetta is the latest addition to our family and we think it just might find a place in yours.

Your first family car is something special. It's a car you'll remember forever as it carries you and yours on one of life's most important journeys. The new Jetta is roomier, safer and more economical than ever. It also has the clean lines and smart performance you want from your daily drive.

The range comprises four models, all of which offer outstanding value and share our uncompromising approach to safety and dynamics. The 118TSI comes with a long list of standard features so even the most budget-conscious family can enjoy a well-appointed sedan. The 118TSI Comfortline adds a number of style and convenience features to keep you and your family more comfortable than ever. The 103TDI Comfortline offers the same fit-out as its petrol-engine stablemate, but with the addition of a fuel-efficient diesel engine that will take on those long family trips with ease. Finally, the 147TSI Highline is the ultimate Jetta, with a beguiling mix of performance, technology and style.

It's the little things that make the biggest impression, like the multi-function leather steering wheel, Bluetooth® connectivity and Media Device Interface (MDI) fitted as standard across the range. The Jetta has been designed for versatility and it'll make every trip – whether you're loading up on groceries, doing the school run or setting off for a family holiday – not just simple, put positively enjoyable. With a spacious boot and a roomy interior, it's a car that gives you, and your family, plenty of room to grow.

Range Overview

118TSI – Raising the standard

There's no need to compromise on features with the 118TSI. Combining the performance and efficiency of our award-winning 1.4 litre twincharged TSI engine with a roomy and well-appointed interior, its easy-to-drive dynamics will put a smile on your face every time you start it up.



118TSI Comfortline – Substance and style

The 118TSI Comfortline's understated luxury is a perfect complement to its poise and performance. Its smooth power delivery and precise handling make the daily drive even easier, while its interior appointments mean you'll arrive feeling as fresh as a daisy.



103TDI Comfortline – Performance you can trust

If long family expeditions are your style, then the 103TDI Comfortline is the Jetta for you. Its 2.0 litre turbocharged TDI diesel engine outputs plenty of torque to handle big loads and long distances; the fact that it's economical with its fuel is the icing on the cake.



147TSI Highline – Take the high road

For the driver who wants it all, the 147TSI Highline is the answer. With a potent, turbocharged 2.0 litre TSI petrol engine, lowered suspension and striking sports styling (including front fog lights and chrome highlights), it's a driver's car that also happens to be ideal for a family on the move.



118TSI

One with the lot





With an equipment list that puts many other fully-optioned models to shame, the 118TSI is a well-rounded car that wants for nothing, whether your focus is performance, safety or comfort. Powered by our latest generation 1.4 litre TSI twincharged petrol engine (with 118kW of power and 240Nm of torque), mated to a 6 speed manual or optional 7 speed DSG (Direct Shift Gearbox) transmission, it's no slouch on the open road. Other standard equipment includes Electronic Stabilisation Program (ESP), ABS brakes, Brake Assist, EDL (Electronic Differential Lock) and ASR (Anti Slip Regulation).

Stepping inside, the multi-function leather steering wheel improves driver comfort and the Media Device Interface (MDI) with USB connection cable means you can bring your favourite music along with you. A front seat armrest with storage, 60/40 split folding rear seats, cup holders, air conditioning (including a chillable glove box) and our RCD310 audio system (with MP3 compatible CD player and auxiliary input socket) round out the package.

When it comes to dynamics, the Jetta has all the poise you'll ever need. Daytime driving lights and our Hill Start Assist (HSA) system give you an extra level of amenity and the electro-mechanical power steering system is calibrated to give you precision at all speeds and in all conditions. Not that we've neglected the Jetta's safety package, which includes front, front side and curtain airbags, safety optimised front head restraints, precision-engineered crumple zones and more.

From its well-designed face, with a grille and air intakes designed to optimise airflow, to the shapely aerodynamic body and the well-proportioned rear, every inch of the Jetta is a fine example of precision engineering and careful attention to detail. Built to deliver the goods for years to come, it's a great addition to the family.



This vehicle has been awarded a maximum 5 Star Rating by ANCAP.

118TSI Comfortline

A no compromise solution





What do you want from a car? Subtlety? Quality? Thoughtful design? The 118TSI Comfortline has all these and more. Taking our standard list of features one step further, it delivers substance and style – not to mention safety and security.

It's the refined exterior that you'll notice first. The aerodynamic front end directs air around the car, aided by the sharp bonnet lines and carefully-contoured roof and rear end. Body coloured bumpers, door handles and mirrors tie it all together while the lowered sills add visual interest. Beneath the skin, our tried-and-tested 1.4 litre twincharged TSI petrol engine (118kW/240Nm) puts out all the power you need, and the 7 speed Direct Shift Gearbox (DSG) delivers it to the road with poise and confidence. When you're moving more slowly, the 118TSI Comfortline's parking distance sensors and Optical Parking System make getting into and out of small spaces a breeze.

Taking a long trip with the family can provide some great memories, as long as your car is comfortable, and on this count too, the 118TSI Comfortline has you covered. Pockets on the back of the front seats provide handy extra storage, while the dual zone automatic climate control air conditioning, RCD310 audio system, Bluetooth® phone connectivity and adjustable front seats ensure you'll stay relaxed all the way to your destination.

When you get there, you'll find that the large (510 litre) boot has provided plenty of space to bring along all the gear you need, whether you're coming home with the shopping or leaving town with the tents and camping gear. It's built not just to withstand the rigours of family life, but to make every drive as easy, relaxing and enjoyable as possible.



This vehicle has been awarded a maximum 5 Star Rating by ANCAP.

103TDI Comfortline

The next generation





Families are generational affairs, and the 103TDI Comfortline has been built with future generations in mind. Its engine is a 2.0 litre turbocharged common rail diesel that outputs 103kW of power and a more-than-healthy 320Nm of torque. That means it's the ideal vehicle for those long drives, whether you're getting away for a holiday or making the best of a long commute. Mated to our 6 speed DSG (Direct Shift Gearbox), with Electronic Stabilisation Program, ABS, Brake Assist, Electronic Differential Lock and Anti Slip Regulation, this is a car that plants itself on the road and motors along in style.

The 103TDI Comfortline's interior is ideally suited to every drive, with adjustable seats, plenty of storage and a host of small touches – like illuminated vanity mirrors in the sun visors, storage pockets on the front seat backrests, a rear seat armrest and more – to make you feel right at home. Subtle design cues, including chrome highlights and 'black pyramid' decorative inserts convey the message that this is a car whose every detail has been carefully thought through.

You'll see it from the outside as well. The Jetta has always been a handsome car with classic good looks and this stylish update gives sophisticated aerodynamics, an upmarket front end, smooth lines and a carefully constructed tail, and a spacious interior.

It's also a car that's been designed with the future in mind. The diesel engine doesn't just provide motive power; it also sips at its fuel and is low on emissions. It travels long distances with ease and for those of us for whom the world we pass down to our children is just as important as the world we're inhabiting right now, it's a great way to get around.

147TSI Highline

Luxury and performance





We're reluctant to call any model of Jetta 'top of the line', because there isn't a bare-bones model to be found. But the 147TSI Highline is inarguably our best-performing, best-appointed model, an ideal vehicle for a family that wants to travel in style without breaking the bank. First, the engine. Our 2.0 litre turbocharged TSI engine kicks out a tidy 147kW of power (and 280Nm of torque), meaning it's got plenty of zip to get you and your family around town with a minimum of fuss. It also makes for a great touring car.

Combined with independent suspension on each wheel that's been lowered by 15mm, the result is a car that hugs the road and loves to be driven, whether it's a long stretch of highway or your favourite backroad. The 6 speed Direct Shift Gearbox (DSG) keeps the power in the zone you need and electro-mechanical power steering keeps you pointed in the right direction.

The exterior styling gives several subtle cues to the car's true capabilities. Chrome highlights and body-coloured bumpers, door handles and mirrors give it an air of sophistication. The fog lights and alloy wheels hint at its driving potential. And the smooth lines and subtle aerodynamic improvements help the car to slip through the air even as they suggest its European design heritage.

On the inside, the message continues. Vienna leather appointed seat upholstery provides a heightened level of comfort and visual appeal, while the cabin abounds with thoughtful touches like storage bins and pockets, 60/40 split-fold rear seats, adjustable front seats, tasteful decorative inserts and our RCD510 touchscreen audio system with MP3 compatible 6 disc CD changer and SD card slot.

You want only the best for your family? Then the 147TSI is the car for you.

Exterior

This is your car

Whichever way you look at it, the Jetta is a classic family car. Clean lines, strong profile, confident stance... it's all here. Embodying Volkswagen's latest advances in aerodynamics, the Jetta isn't just handsome, it's been carefully designed to improve performance and efficiency.

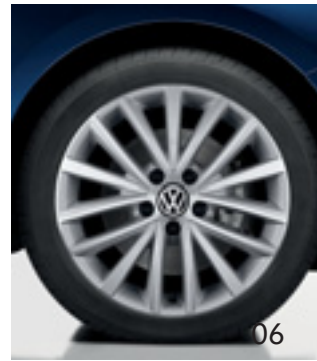
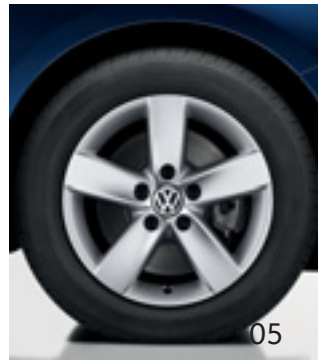
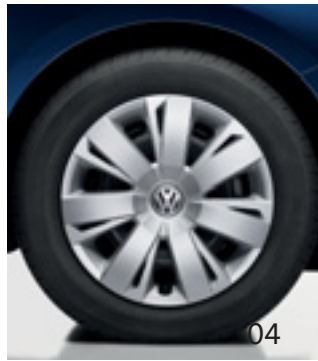
From the pronounced bonnet lines, sills and wheel arches to the aerodynamic front and rear ends, every inch of this car's exterior has a dual purpose: to look good and to help it slip through the air with the greatest of ease.



01



02



01. Grille

The focal point of any car's design is its 'face' and the Jetta has maintained its simple, well-balanced lines. The body coloured bumper contrasts with the horizontal grille and a lower air intake that optimises airflow and incorporates a spoiler to improve handling. Front fog lights (standard on the 147TSI Highline or available as part of the optional Sport package) and daytime driving lights ensure good visibility in all conditions.

02. Bold lines

The Jetta's bonnet and sides are given visual and aerodynamic shape by sharply sculpted creases and a well-defined hipline. In addition to their practical functions, they help define the car's unique shape and presence.

03. Rear lights

The Jetta features a distinctive tail light cluster with a two-piece construction that gives it a unique appearance. Integrated turn indicators ensure your signals are clearly transmitted to other road users.

04. 16" Full Wheel Trims (Std on 118TSI)

05. Navarra 16" Alloy Wheel (Std on 118TSI Comfortline and 103TDI Comfortline)

06. Queensland 17" Alloy Wheel (Std on 147TSI Highline)

07. Body coloured trim

All Jetta models have body coloured bumpers, side mirrors and door handles. This subtle touch helps ensure the car's elegant lines aren't disrupted by swathes of metal or black plastic. It also communicates something more subtle – that this car embodies an uncompromising, well-judged aesthetic.

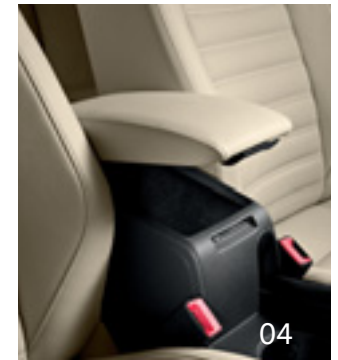
Interior

Your everyday companion

A comfortable drive is a safe drive. The more time you spend in your car, the more you'll appreciate that comfort is a vital factor in maintaining driver alertness. This makes comfort and amenity a matter of high priority, and it's a priority that the

Jetta addresses with a range of features that will ensure its driver and occupants arrive at their destination feeling refreshed and relaxed.





01. Multi-function leather steering wheel

The Jetta's multi-function leather steering wheel is not just comfortable in the hands; it's also fitted with ergonomically-designed controls that make operating the audio system, multi-function display and your hands-free phone safe and simple.

02. Multi-Function Display (MFD Plus)

The Jetta's Multi-Function Display is a valuable information centre. It can be set to display a range of trip information including driving time, current and average fuel consumption, range, distance travelled, average speed, current speed, oil temperature and speed warnings. It can also be used to adjust settings for convenience (such as door locking and mirror adjustments), light and vision (such as the coming/leaving home function on Comfortline and Highline), as well as audio, telephone and (optional) navigation menus.

03. Split/folding rear seat

The Jetta's boot is roomy, but sometimes you need extra space for longer items or when moving large loads. The rear seat has a 60/40 split and both sides can be folded down, making the load space fully configurable to suit your requirements. The luggage compartment also features a rear seat remote release.

04. Centre console

There's no need to be distracted by loose items on seats or elsewhere in the car with the Jetta's spacious front centre armrest height and reach adjustable console. Below the armrest is a roomy, easy to access storage box, and air vents on its back face ensure the air conditioning keeps rear seat passengers comfortable.

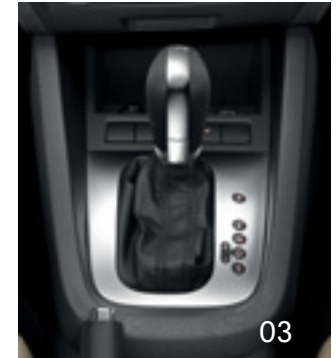
Technology

The systems you need – no more, no less

Volkswagen cars have a well-earned reputation for technological sophistication and the Jetta is no exception. It embodies our decades of experience in automotive technology and you'll feel it every time you start the engine, every time you fill the fuel tank and every time you drive away.

Our approach has produced a range of power plants with high output and long life, and our transmissions ensure that the power is transferred to the wheels as smoothly and efficiently as possible.





01. TSI engine

Volkswagen's TSI technology includes turbo charged and twincharged (both turbo charged and super charged) petrol engines with direct injection. The innovative engineering boasts excellent torque and power at low revolutions – for you that means lower fuel consumption and fewer emissions.

02. TDI engine

Volkswagen's cutting-edge TDI engines with Diesel Particulate Filters feature Common Rail technology that injects precise amounts of fuel at extremely high pressure. This not only results in a cleaner burning engine – and years of hard-wearing durability – but exceptional fuel economy, impressive torque and compelling performance whatever the drive.

03. DSG (Direct Shift Gearbox)

DSG is an advanced 6 or 7-speed transmission in which the clutch and gearshift are controlled electronically. What makes DSG unique is that the next gear is already pre-selected and awaiting power to be transferred, resulting in a gear change that takes only 3-4 hundredths of a second. The benefits are virtually no interruption to power, traction or acceleration, and additional flexibility. Furthermore, because it ensures optimum transmission of the engine power, DSG provides excellent fuel consumption and driving satisfaction.

04. Hill Start Assist

What the Jetta's Hill Start Assist system does is simple in principle: it interacts with the car's brakes when starting off on a slope and prevents it from rolling backwards. So not only does it make hill starts smoother, it also improves safety and makes driving easier and less stressful.

Safety

Protecting your family

A driver should leave nothing to chance – and neither should a car manufacturer. Which is why we've made sure the Jetta is as safe as possible; to give you the ultimate peace of mind wherever you drive. Active safety measures give you the best possible chance of avoiding an accident, while passive safety measures ensure that in a collision, impact is reduced and occupants are protected.

Ultimately, road safety is up to the driver, but when unexpected events happen, the Jetta will be there to keep you and your passengers safe.



Active Safety – Everything designed to help prevent accidents from happening.

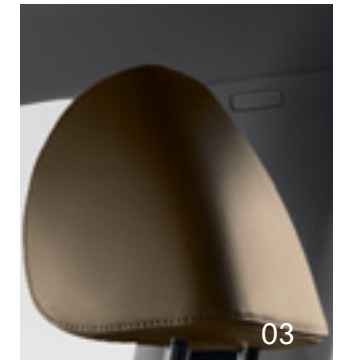
01. Traction Control (EDL, ASR and ESP), Braking Control (Brake Assist, ABS and EBD)

Our traction control systems help you to maintain control of your vehicle even in difficult driving situations. Built around three distinctive functions – Electronic Differential Lock (EDL), Anti Slip Regulation (ASR) and Electronic Stabilisation Program (ESP) – traction control plays a significant role in keeping you out of danger.

Passive Safety – Protecting occupants from injury, and reducing the impact of collisions.

02. Airbags

All models of Jetta feature six airbags (twin front, front side and full length curtain) as standard. Airbags combine with seatbelts to help reduce the risk of severe head and chest injuries in collisions. When inflated, airbags cushion the head and upper body, distributing the resulting loads over as large an area as possible.



03. Safety optimised head restraints

Working in unison with its seatbelts, the Jetta's front seat safety optimised head restraints are designed to reduce whiplash injury, ensuring optimal protection when you need it most.

04. Seatbelts (not pictured)

Every seat in every Jetta features three-point seatbelts, while front seats also have belt pretensioners (which tighten the belt on impact) and belt force limiters (which reduce forces on passengers). These help position the body so as to minimise injuries in the event of a crash.

05. Crumple zones (not pictured)

The Jetta's body has been designed with its occupants' safety in mind. In the event of an accident front and rear crumple zones absorb the impact's energy, working together with the safety cell to protect all occupants.

In Car Entertainment and Technology

Let us entertain you

What's a daily commute without the news and weather? Or a long drive without your favourite music? The Jetta range features some great options for in-car entertainment, whether you want to listen to the radio, a CD, your MP3 player or even tunes stored on a data stick.

It also offers phone connectivity, our Media Device Interface and an optional satellite navigation system for those who want to be sure their drive is as engaging as possible.



01



02



01. RCD310 (pictured) and RCD510 (not pictured) Audio Systems

The RCD310 audio system (standard on the 118TSI, 118TSI Comfortline and 103TDI Comfortline) includes an MP3 compatible CD player, so you can rip your favourite music from your computer's hard drive to a data disc. It also includes an auxiliary input socket to accommodate other music sources. The RCD510 (standard on the 147TSI Highline) has a 6 disc MP3 compatible CD changer and an SD card slot to give you all the flexibility you need to access the music you favour.

02. RNS510 Satellite Navigation System



Nobody likes getting lost, especially when you're loaded up and heading for your favourite holiday spot. The RNS510 Satellite Navigation System helps to keep you on track all the time. With a touch sensitive display and a hard drive to store music, it's easy to use and easy to love.

03. Bluetooth® phone connectivity (not pictured)

Compatible with phones featuring Bluetooth®, operation is possible via the touch screen or convenient steering wheel controls. Taking advantage of the Jetta's crystal-clear sound system, you can stream music wirelessly from your phone and, of course, take and make calls.

04. Media Device Interface (MDI)

Tucked away in the Jetta's glovebox is our Media Device Interface (MDI). Controlled by the Multi Function Display or the touch screen, the MDI includes a USB cable to connect your media player to the audio system – an iPod* cable is available as an accessory. So now you can bring your favourite music along with you when you travel, without having to manage piles of discs.

*iPod® is a registered trademark of Apple Inc.

05. Optical Parking System (OPS)

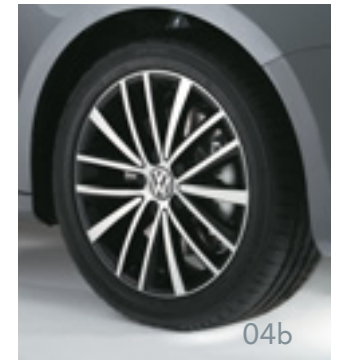
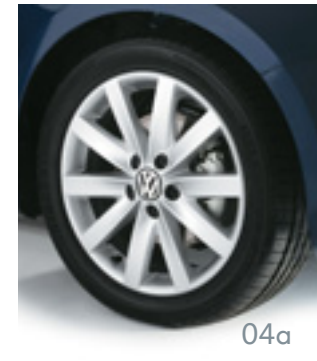
The Optical Parking System (standard on Comfortline and Highline models) takes the parking aid/parking sensor concept to a new level. A silhouette of the Jetta is displayed on the radio or navigation system screen during parking, showing the Jetta's position and distance from obstacles. The location of any obstacle within range of the ultrasonic sensors is highlighted on screen.

Optional Equipment

Just what you were looking for

We're all individuals, and with our range of optional fittings, your Jetta can be as unique as you are. From performance to comfort and security, you'll find the options you need to ensure your new car meets all your automotive requirements.





01. Bi-Xenon headlights

The Jetta's optional Bi-Xenon headlights provide both low and high beam from the same globe (by adjusting the light emitted). The light is clear and bright, making these a must-have for dedicated night drivers. What's more, the Jetta also boasts distinctive LED daytime driving lights, as well as dynamic cornering lights.

02. Electric glass sunroof

There's no doubt that natural light is best, and the optional electric tilting/sliding sunroof makes it easy to control how much of the sun you let into your car. It's tinted for protection against UV rays and the tilt function means you can also use it to let in a little more fresh air. Available for Comfortline and Highline models.

03. Vienna leather appointed upholstery with electric driver's seat

Nothing is more comfortable than a well-made leather appointed seat, and Comfortline owners can choose to upgrade to our high-quality Vienna leather appointed upholstery. It's fitted as standard on the Highline, and the package includes individually heated front sports seats. The Vienna leather appointed upholstery package also includes an electrically adjustable driver's seat on both Comfortline and Highline models.

04. Sport package

The Comfortline sport package includes 17-inch 'Porto' alloy wheels (picture 04a), lowered suspension, front fog lights (with static cornering lights) and dark tinted rear side and rear window glass; the Highline package includes 17-inch 'Queensland' alloy wheels (picture 04b) in a black finish and dark tinted rear side and rear window glass.

05. Anti-theft alarm system (not pictured)

It just makes sense to protect your investment, so drivers who want total peace of mind can opt for our anti-theft alarm system. Using a signal that works independently of the car's other electronics, the system will sound the alarm and flash the hazard lights continuously.

Volkswagen Genuine Accessories

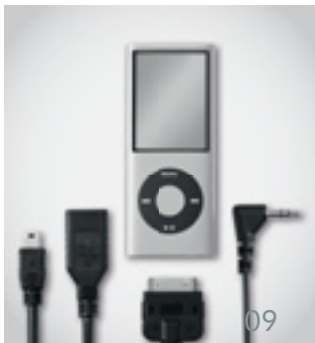
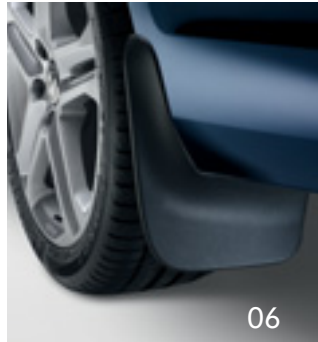
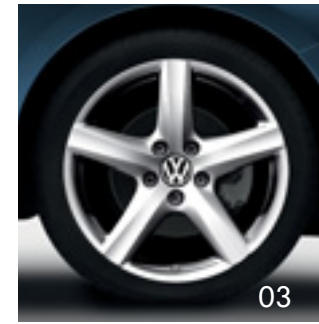
The finishing touches

Our comprehensive range of genuine accessories give you the freedom to customise the look and feel of your vehicle to reflect your own personality and individual sense of style. The product philosophy is simple – to deliver innovative technologies and premium design – right down to the finest detail. Each and every genuine accessory has been designed specifically with the Jetta in mind and has been

engineered and rigorously tested to ensure that it meets the same high standards of quality as the vehicle itself.

For more information or to experience the full range of genuine accessories designed to suit the Jetta, visit your local Volkswagen Dealer.





- 01. Slimline weather shields
- 02. Scuff plates
- 03. Avignon 17" alloy wheel
- 04. Motorsport 18" alloy wheel
- 05. Stainless steel sports pedal set

- 06. Mud flaps, front and rear
- 07. Bicycle holder
- 08. Luggage compartment tray
- 09. Media Device Interface (MDI) connection cables
- 10. Tow bar

It is noted that the above accessories may have an effect on fuel efficiency. Items such as sports equipment and iPod® are for illustration purposes only and are not available for purchase from Volkswagen Group Australia or its dealers.

Specifications

Safety and Security	118TSI	118TSI Comfortline	103TDI Comfortline	147TSI Highline
→ Airbags				
Driver and front passenger airbags	S	S	S	S
Driver and front passenger side airbags	S	S	S	S
Curtain airbags, front and rear	S	S	S	S
→ Anti-theft				
Alarm system with interior monitoring and tilt sensor	–	O	O	O
Electronic engine immobiliser	S	S	S	S
→ Body				
Fully galvanised with 12 year anti-corrosion perforation warranty	S	S	S	S
Door side impact protection	S	S	S	S
Rigid safety cell with front and rear crumple zones	S	S	S	S
→ Brakes				
Automatic flashing brake lights activated in emergency braking situation	S	S	S	S
Anti-lock Braking System (ABS)	S	S	S	S
Electronic Brake-pressure Distribution (EBD)	S	S	S	S
Brake Assist	S	S	S	S
Hill Start Assist (HSA)	S	S	S	S
→ Entry/warning reflector in front and rear doors	S	S	S	S
→ Head restraints				
Front safety optimised head restraints, height adjustable	S	S	S	S
Rear head restraints height adjustable (3)	S	S	S	S
→ Lighting				
Daytime driving lights	S	S	S	S
Front fog lights with static cornering lights, mounted in lower bumper	–	–	–	S
Rear fog lamp	S	S	S	S
→ Locking				
Remote central locking with deadlock mechanism	S	S	S	S
2 stage unlocking (programmable)	S	S	S	S
Automatic locking after takeoff (programmable)	S	S	S	S
One touch lock/unlock for driver	S	S	S	S
Child safety locks on rear doors	S	S	S	S
Fuel filler flap lock/unlock by remote, push to open	S	S	S	S
→ Seat belts				
Front height adjustable with pre-tensioners and belt force limiters	S	S	S	S
Visual and acoustic warning for driver and front seat passenger seat belts not fastened	S	S	S	S
3 point seat belts for all passengers	S	S	S	S
Child seat anchor points mounted on rear parcel shelf (3)	S	S	S	S
→ Traction control				
Anti-Slip Regulation (ASR)	S	S	S	S
Electronic Differential Lock (EDL)	S	S	S	S
Electronic Stabilisation Program (ESP)	S	S	S	S

Specifications

Exterior Equipment/Styling	118TSI	118TSI Comfortline	103TDI Comfortline	147TSI Highline
→ Body enhancements				
Body coloured bumper bars, door handles and exterior mirrors	S	S	S	S
Chrome inserts in radiator grille	–	S	S	S
Chrome lower air intake highlight	–	–	–	S
Chrome strip on lower edge of side window frames	–	S	S	S
Chrome trim on lower boot lid	A	A	A	A
Dual chrome exhaust tail pipe trims, left	A	A	A	S
Exposed exhaust tail pipes	S	S	S	S
Sports body kit	A	A	A	A
→ Paint				
Metallic or Pearl Effect paint finish	O	O	O	O
→ Protection				
Bonnet protector	A	A	A	A
Headlight protectors	A	A	A	A
Loading sill protection	A	A	A	A
Mudflaps, front and rear	A	A	A	A
Slimline weather shields	A	A	A	A
→ Roof				
Roof bars	A	A	A	A
Bicycle, kayak, ski, surfboard and snowboard holders	A	A	A	A
Luggage rack	A	A	A	A
Ski and luggage box	A	A	A	A
→ Sports suspension with 15mm lowered ride height	–	–	–	S
→ Turn indicators integrated in exterior mirrors with LED technology	S	S	S	S
→ Tinted glass				
Heat insulating tinted glass	S	S	S	S
→ Tow bar				
Tow bar with 7-pin flat trailer connector and removable tongue	A	A	A	A
→ Wheels				
Steel wheels 16 x 6½" with full wheel trims and 205/55 R16 tyres	S	–	–	–
Alloy wheels (Navarra) 16 x 6½" with 205/55 R16 tyres	–	S	S	–
Alloy wheels (Queensland) 17 x 7" with 225/45 R17 tyres	–	–	–	S
Alloy Wheels (various designs) 16, 17 and 18" Please consult your Volkswagen Dealer for correct wheel and tyre fitment by model.	A	A	A	A
Anti-theft wheel bolts	A	S	S	S
Steel spare wheel 16 x 6½" with 205/55 R16 tyre Please note: The 147TSI Highline spare wheel and tyre is speed restricted.	S	S	S	S
Low tyre pressure indicator	–	S	S	S

Specifications

Comfort and Convenience	118TSI	118TSI Comfortline	103TDI Comfortline	147TSI Highline
→ Armrests				
Front centre armrest with storage box, rear air outlets (2)	S	S	S	S
Rear seat centre armrest with load through provision and cup holders (2)	–	S	S	S
→ Air conditioning				
Air conditioning, manual control	S	–	–	–
Dual zone automatic (2 modes) climate control with indirect ventilation mode	–	S	S	S
Air quality sensor with automatic air recirculation	–	S	S	S
Dust and pollen filter	S	S	S	S
→ Cruise control	S	S	S	S
→ Cup holders				
Bottle holders in front door pockets	S	S	S	S
Centre console, front (2)	S	S	S	S
Rear seat centre armrest (2)	–	S	S	S
→ Driver Assistance Systems				
Audio volume level reduction when parking sensor warning is activated	–	S	S	S
Optical Parking System (OPS) in radio display	–	S	S	S
Parking distance sensors, front and rear with acoustic warning	–	S	S	S
Parking distance sensors, rear	A	–	–	–
Rear View Camera (RVC) with static guidance lines RVC is available only in conjunction with RCD510 radio (147TSI Highline) or the optional RNS510 satellite navigation system.	–	O	O	O
→ Floor mats				
Front and rear, carpet	A	S	S	S
Front and rear, rubber	A	A	A	A
→ Grab handles				
Soft fold away grab handles (4)	S	S	S	S
→ Headlights				
Halogen headlights with daytime driving lights and clear polycarbonate lens	S	S	S	S
Bi-xenon headlights for high and low beam with dynamic cornering lights, integrated LED daytime driving lights, LED rear number plate light, automatic self-levelling, headlight washer system and low washer fluid warning	–	O	O	O
Headlight washer system	–	–	–	S
Internal headlight range adjustment	S	S	S	S
Low light sensor with automatic headlight function	–	S	S	S
Coming / leaving home function	–	S	S	S
Combined headlight and fog light rotary switch	S	S	S	S
→ In car entertainment and technology				
AM/FM security coded radio (RCD310) with MP3 compatible CD player	S	S	S	–
AM/FM security coded radio (RCD510) with 6½" touch screen display, MP3 compatible SD card slot and 6 disc CD changer, in dash	A	A	A	S
Audio and telephone controls mounted on steering wheel	S	S	S	S
Auxiliary input socket for external audio source in front centre console	S	S	S	S
Bluetooth® phone connectivity with phonebook display, operation via touch screen audio unit or MFD Plus and Bluetooth® audio streaming	S	S	S	S

Specifications

Comfort and Convenience (Continued)	118TSI	118TSI Comfortline	103TDI Comfortline	147TSI Highline
→ In car entertainment and technology				
Media Device Interface (MDI), fitted in the glove compartment and supplied with USB connection cable	S	S	S	S
Media Device Interface (MDI) connection cables for iPod®, mini USB and auxiliary input Please note: iPhone 5 compatibility is not yet available	A	A	A	A
Satellite navigation system (RNS510) High-resolution 6½" touch screen display in 16:9 format, 2D, topographical and 3D (bird's eye) map views, voice control for navigation, telephone and radio functions, integrated 30 GB hard drive for storing music and navigation data, SD card slot and single DVD drive for the playback of audio CD/MP3	A	O	O	O
Speakers, front and rear (8)	S	S	S	S
→ Instrumentation				
Speedometer & tachometer, electronic odometer and tripmeter, service interval display, digital clock, fuel & coolant gauges, low fuel warning light, and white adjustable illumination	S	S	S	S
→ Interior highlights				
'Matte Chrome' inserts in dashboard and doors	S	–	–	–
'Black Pyramid' inserts in dashboard and doors	–	S	S	–
'Iridium' inserts in dashboard and doors	–	–	–	S
Chrome trim on instrument cluster and gearshift lever surround	S	S	S	S
Chrome trim on air vent surrounds and rotary light switch	–	S	S	S
Door sill scuff plates	A	A	A	A
Leather covered steering wheel and gearshift knob	S	S	S	S
Retro styled manual gearshift knob	A	–	–	–
Stainless-steel sports pedal set	A	A	A	A
→ Interior lighting				
With time delay	S	S	S	S
Front reading lights	S	S	S	S
→ Luggage compartment				
Automatic boot lid release	S	S	S	S
Luggage compartment light	S	S	S	S
Luggage compartment protection, moulded foam, moulded rubber	A	A	A	A
Luggage compartment removable storage divider and storage net	–	S	S	S
Rear seat remote release	S	S	S	S
12 volt socket	–	–	–	S
→ Mirrors				
Automatic dimming interior rear-view mirror	–	S	S	S
Electrically heated and adjustable exterior mirrors	S	S	S	S
Electrically foldable exterior mirrors with environment lighting	–	S	S	S
Turn indicators with LED technology integrated in exterior mirrors	S	S	S	S
→ Power steering				
Electro-mechanical, vehicle speed and steering input sensitive	S	S	S	S

Specifications

Comfort and Convenience (Continued)	118TSI	118TSI Comfortline	103TDI Comfortline	147TSI Highline
→ Seating				
Comfort front seats	–	S	S	–
Sports front seats	–	–	–	S
Height adjustment for front seats	S	S	S	S
Lumbar adjustment for front seats	–	S	S	S
Electrically adjustable driver's seat and lumbar support The electrically adjustable driver's seat is only available in combination with leather appointed seat upholstery. Electric seat adjustment replaces storage drawer under driver's seat.	–	O	O	O
Split folding rear seat backrest (60/40) with rear seat remote release from luggage area	S	S	S	S
Rear seat centre armrest with load through provision	–	S	S	S
→ Steering wheel				
3 spoke leather rimmed steering wheel	S	S	S	S
Audio, telephone and Multi-Function Display controls	S	S	S	S
Height and reach adjustable steering wheel	S	S	S	S
→ Storage				
Chillable glove box with illumination, lockable	S	S	S	S
Centre console storage compartment	S	S	S	S
Coin tray and 12 volt socket in console	S	S	S	S
Drawers under front seats	–	–	–	S
Front seat backrest storage pockets	–	S	S	S
Front door pockets with bottle holders and rubber mats	S	S	S	S
Compartment in roof console with lid	S	S	S	S
→ Sunroof				
Glass sunroof, electrically slide and tilt adjustable with sunblind	–	O	O	O
→ Transmission				
Manual gearshift recommendation indicator	S	–	–	–
6 speed manual transmission	S	–	–	–
6 speed Direct Shift Gearbox (DSG)	–	–	S	S
7 speed Direct Shift Gearbox (DSG)	O	S	–	–
→ Trip computer				
Multi-Function Display (MFD Plus) – trip time, trip length, average and current speed, average and current fuel consumption, distance till empty and outside temperature, audio, telephone and convenience menus	S	S	S	S
→ Upholstery				
Cloth seat upholstery	S	–	–	–
Comfort cloth seat upholstery	–	S	S	–
Vienna leather appointed seat upholstery				
Individually heated front sports seats				
Electrically adjustable driver's seat and lumbar support*	–	O	O	S
Storage drawer under front passenger's seat				
Some parts of the leather appointed seat upholstery will contain man made material.				
*The electrically adjustable driver's seat is an option for the 147TSI Highline.				

Specifications

Comfort and Convenience (Continued)	118TSI	118TSI Comfortline	103TDI Comfortline	147TSI Highline
→ Vanity mirrors Driver's and passenger's side vanity mirrors Illuminated on driver's and passenger's side	S S	S S	S S	S S
→ Windows Power front/rear, with roll-back function and one-touch up-down Remote operated convenience close and open feature Sunblind for rear window	S S A	S S A	S S A	S S A
→ Wipers 2 speed aero wipers with wash/wipe and vehicle speed sensitive intermittent wipe Rain sensor Warning light for low washer fluid level	S - -	S S -	S S -	S S S
→ 12V socket Centre console, front and rear Luggage compartment	S -	S -	S -	S S
Optional Packages				
→ Sport package Porto 17 x 7" alloy wheels with 225/45 R17 tyres (4) Dark tinted rear side windows and rear window, 65% light absorbing Front fog lights with static cornering lights, mounted in lower bumper Sports suspension with 15mm lowered ride height Please note: The spare wheel and tyre is speed restricted in combination with this option.	-	O	O	-
→ Sport package Queensland Black 17 x 7" alloy wheels with 225/45 R17 tyres (4) Dark tinted rear side windows and rear window, 65% light absorbing Please note: The spare wheel and tyre is speed restricted in combination with this option.	-	-	-	O

Technical Specifications

	118TSI 118TSI Comfortline~		147TSI Highline	103TDI Comfortline
→ Engine	1.4 litre TSI		2.0 litre TSI	2.0 litre TDI
Type	4 cylinder inline Twincharger direct injection petrol		4 cylinder inline turbo direct injection petrol	4 cylinder inline turbo charged diesel
Installation	Front transverse		Front transverse	Front transverse
Cubic capacity, litres/cc	1.4 / 1390		2.0 / 1984	2.0 / 1968
Bore/stroke, mm	76.5 / 75.6		82.5 / 92.8	81.0 / 95.5
Max power, kW @ rpm	118 @ 5800		147 @ 5100	103 @ 4200
Max torque, Nm @ rpm	240 @ 1500-4000		280 @ 1700	320 @ 1750-2500
Compression ratio	10:1		9.6:1	16.5:1
Ignition system	Electronic		Electronic	Compression
Exhaust emission control	Exhaust gas recirculation, catalytic converter and lambda probes		Exhaust gas recirculation, Two 3 way Catalytic Converter with Lambda Probe	Exhaust gas recirculation with oxidising catalytic converter and diesel particulate filter
Emission level	EU 5^		EU 5^	EU 5^
Fuel system	Bosch Motronic		Bosch Motronic	Bosch common rail
Fuel type (Recommended)	Premium unleaded 95 RON minimum		Premium unleaded 95 RON minimum	Diesel 51CZ
Fuel tank capacity, litres	55		55	55
→ Transmission	6 Speed Man	7 Speed DSG	6 Speed DSG	6 Speed DSG
Driven wheels	Front wheel drive		Front wheel drive	Front wheel drive
→ Performance#				
0-100km/h, seconds	8.3	8.3	7.5	9.5
→ Fuel consumption*				
Combined, L/100km	6.5	6.2	7.9	5.5
Urban, L/100km	8.3	7.7	10.8	6.9
Extra Urban, L/100km	5.3	5.3	6.1	4.7
CO ₂ emission, g/km	150	144	183	143

~ The 118TSI Comfortline model is available exclusively with a 7 speed DSG transmission.

^ Emission level according to European Regulation (EC) No. 715/2007 and Regulation (EC) No. 692/2008.

Please note figures are sourced from overseas data where equipment levels by model variant may vary.

* Fuel consumption figures according to Australian Design Rule (ADR) 81/02.

The driving style, road and traffic conditions, environmental influences, the fitment of accessories and vehicle condition can in practice lead to consumption figures which may differ from those calculated with these standards.

Technical Specifications

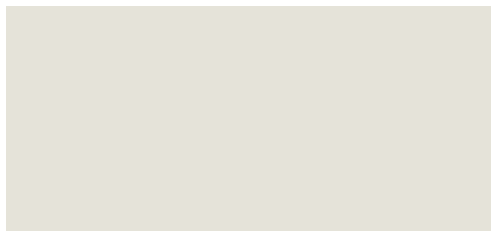
	118TSI 118TSI Comfortline~	147TSI Highline	103TDI Comfortline	
→ Running Gear	Electro-mechanical power assisted rack & pinion steering			
Steering	11.1			
Turning circle, metres	Independent, MacPherson struts with lower A-arms. Anti-roll bar. Sports Suspension (147TSI Highline)			
Suspension	Front axle	Independent, four-link with coil springs. Anti-roll bar. Sports Suspension (147TSI Highline)		
	Rear axle	Ventilated Discs		
Brakes	Front	Discs		
	Rear	Anti-lock Braking System (ABS) with Electronic Brake-pressure Distribution (EBD), Brake Assist and Electronic Stabilisation Program (ESP)		
→ Brake systems				
→ Weights	6 Speed Man	7 Speed DSG	6 Speed DSG	6 Speed DSG
Tare Mass kg	1317	1337	1393	1487
Towing Capacity kg	Braked*	1400	1400	1400
	Unbraked	680	680	680
Tow bar load limit kg	75	75	75	75
→ Exterior Dimensions				
Overall length mm	4744			
Width mm	1778			
Height mm	1473			
Wheelbase mm	2633			
Track mm	Front	1538		
	Rear	1535		
→ Luggage Area Dimensions#				
Luggage area volume L	(Rear seat upright)	510		
Luggage area floor length, mm	(Rear seat upright)	1092		
	(Rear seat folded)	1858		
Luggage area width, mm	(At widest point)	1345		
	(At narrowest point)	1008		
Luggage area height mm	498			
Luggage area opening mm	Height	354		
	Width	992		

~ The 118TSI Comfortline model is available exclusively with a 7 speed DSG transmission.

Please note figures are sourced from overseas data where equipment levels by model variant may vary.

≠ Please note, Volkswagen Group Australia does not endorse or will not be held liable for any claim, loss or damage arising from the use or fitment of electronic trailer brakes.

Colours



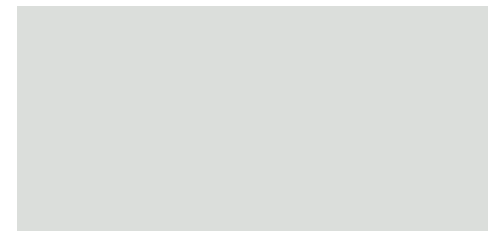
→ Candy White



→ Tornado Red



→ Moon Rock Silver Metallic



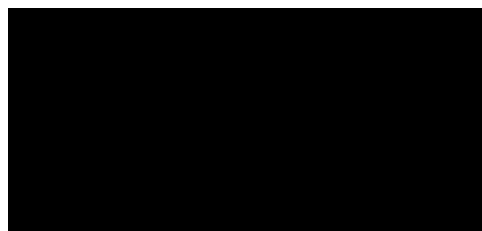
→ Reflex Silver Metallic



→ Tempest Blue Metallic



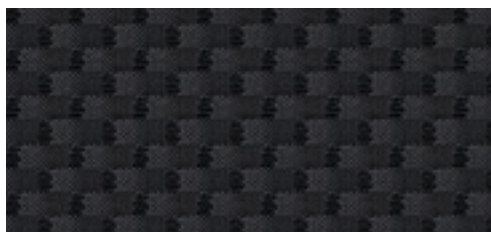
→ Platinum Grey Metallic



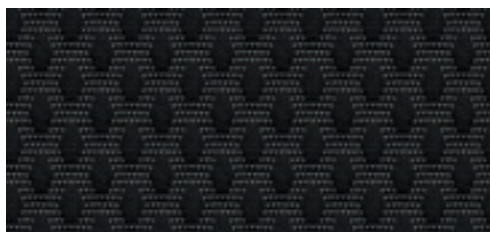
→ Deep Black Pearl Effect

Please note that Metallic and Pearl Effect paint are optional at extra cost. The print process does not allow for exact reproduction of the exterior or the upholstery colours. Please contact your Volkswagen Dealer for further information on colours and upholstery combinations.

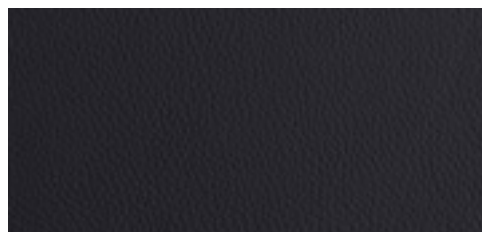
Upholstery



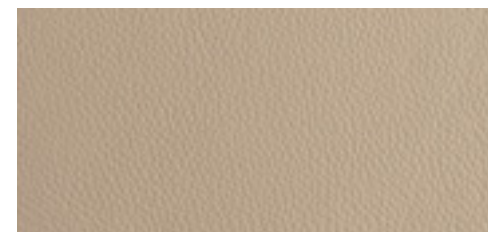
→ Black cloth seat upholstery ●



→ Black comfort cloth seat upholstery ■



→ Black Vienna leather appointed seat upholstery ○▲



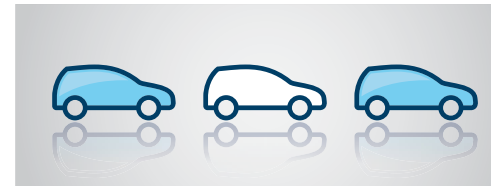
→ Corn Silk Beige Vienna leather appointed seat upholstery ○▲

Fuel Saving Tips

We can all Think Blue.

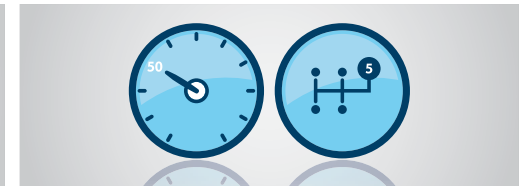
At Volkswagen, we aim to produce the most fuel efficient, environmentally sustainable vehicles possible. The good news is – we can all do our little bit to ‘Think Blue’. Below, we have summarised the best tips for how you can drive more responsibly and reduce fuel consumption even further. It’s not just your wallet that will benefit from these tips, but the environment too. Its practical benefits go far beyond just saving money and reducing emissions. Here are nine tips on how to drive more efficiently.

Be aware and save fuel. Think Blue.



01. Take it easy and save Drive the modern way and think ahead.

Drive smoothly and anticipate hazards. Hard braking and acceleration, sudden lane changes and unpredictable behaviour is fuel-inefficient.



02. Change up early and fill up later Drive in the highest gear possible.

Use a higher gear with a manual transmission. Low revs take far less energy. With an automatic, reduce acceleration and avoid a kick down.



03. Just let it roll Use overrun fuel cutoff.

With the right driving techniques, you can really save. Whilst in gear, coast down hills or towards traffic lights to reduce feeding fuel to your engine.



04. Comfort high, fuel consumption low Use auxiliary equipment in moderation.

Check the equipment you’re using – if you don’t need it, consider turning it off. De-misters, sound systems and air conditioning all use energy.



05. Savings are in the air Check your tyre pressures.

Check your tyre pressures to cut fuel consumption. Under-inflated tyres force your car to burn more fuel. Tyres in good order will help you save fuel.



06. A warm engine – a cool way to save Avoid short trips.

Plan to minimise the number of trips you need to make. Frequent short trips mean higher fuel consumption as cold engines run less efficiently.



07. Well-oiled for impressive savings Use Volkswagen approved engine oils.

A well-lubricated engine produces less emissions especially when the weather is cold or the trip is short. Change your oil at regular intervals.



08. Keep it sleek Cut aerodynamic drag.

Remember to remove roof racks, bike racks or roof boxes off your car when they’re not in use. Keep windows up and sunroofs closed to reduce drag.



09. Lightly does it Avoid unnecessary weight.

Every kilogram you load into your car takes energy to move – energy that will be supplied by burning fuel. The lighter you drive, the more you save.

Jetta Capped Price Servicing*

The Jetta comes with peace of mind included, with Capped Price Servicing* now available at participating Volkswagen dealers.

Authorised Volkswagen Service Centres have factory trained technicians equipped with the very latest diagnostic equipment, specialist tooling and Volkswagen Genuine Parts.

They also undertake work in accordance to factory specified guidelines and maintenance schedules, so you can be confident that your Jetta will be well taken care of.

*Capped price servicing is available at participating Volkswagen dealers on Jetta manual and DSG models first sold by an authorised Volkswagen dealer on or after 1 January 2013. Capped price servicing applies to the first 6 standard scheduled services of your vehicle which are scheduled to occur at every 15,000 km/12 month interval (whichever occurs first). Exclusions and conditions apply. For details on pricing, items not included in the capped price and for full terms and conditions please see volkswagen.com.au. Volkswagen Group Australia reserves the right to at any time modify or discontinue the Capped Price Servicing program.



Glossary

Anti-lock Braking System (ABS)

When braking, wheel speed sensors measure the road wheel speed and should one or more wheels start to lock the ABS system reduces brake pressure to that wheel. This prevents the wheels from locking during heavy or emergency braking, enabling the vehicle to remain steerable.

Anti-Slip Regulation (ASR)

ASR is a traction control system that prevents the wheels from spinning under acceleration by reducing engine torque.

Brake Assist

During emergency braking, Brake Assist aids the driver by increasing the brake pressure automatically to a level exceeding the locking limit. The ABS is thus quickly brought into the operating range, which enables maximum vehicle deceleration to be achieved.

Direct Shift Gearbox (DSG)

DSG is a manual gearbox in which the gearshifts are controlled electronically. What makes the DSG unique is that it has 2 separate gear sets operated by 2 clutches. The benefit of 2 gear sets and 2 clutches is that one gear set and clutch is engaged driving the vehicle with the second disengaged clutch having already pre-selected the next gear awaiting for power to be transferred. As the next gear has already been pre-selected prior to power being applied, the gear change only takes 3-4 100ths of a second. There is virtually no interruption to power, traction or acceleration. The DSG also offers Tiptronic gear selection and sports mode.

Electronic Brake-pressure Distribution (EBD)

Electronic, more sophisticated means of regulating the ratio of front/rear brake pressure. Settings are varied according to driving and load conditions to ensure each wheel is braked to the optimum extent.

Electronic Differential Lock (EDL)

EDL improves driving and steering characteristics when accelerating on road surfaces where each wheel has a different degree of traction. The system operates automatically and is combined with the ABS system. Using the ABS wheel sensors, EDL monitors the speed of the individual driving wheels. When a difference in driving wheel speed is detected (i.e. when one wheel starts to spin due to differences in road surfaces, e.g. due to water or dirt) the system brakes the spinning wheel, transferring engine power to the wheel with the best traction.

Electronic Stabilisation Program (ESP)

ABS and ASR traction control systems are integrated into the Electronic Stabilisation Program (ESP). In short, ESP helps ensure that the vehicle goes where you steer it even in extreme driving conditions. The ESP system constantly compares the actual movement of the vehicle with pre-determined values and should a situation arise where the vehicle starts to skid, ESP will apply the brakes to individual wheels and automatically adjust the engine's power output to correct the problem. ESP prevents the vehicle from losing control when trying to avoid an accident, for example. It also prevents spinning off on a curve due to either understeer or oversteer.

Hill Start Assist (HSA)

Hill Start Assist (HSA) holds the vehicle when the foot brake is released by temporarily locking the brake pressure (for a maximum of 1.5 seconds) to provide comfortable starting-off without rolling back. Hill Start Assist (HSA) operates on inclines greater than 5% and is fitted in combination with the Direct Shift Gearbox (DSG).

Owning a Volkswagen

Volkswagen New Vehicle Warranty

Every new Volkswagen passenger vehicle is covered by a 3-year unlimited kilometres manufacturer's warranty, which includes Volkswagen Assist (24hr roadside assistance).

Every new Volkswagen passenger vehicle is also covered by a 3-year paintwork and 12-year anti-corrosion perforation warranty.

Volkswagen Assist – 24 Hour Roadside Assistance

As a valued customer, you can be assured that wherever you travel within Australia, you will have access to roadside assistance, 24 hours a day, 365 days a year. This is complimentary for the duration of the vehicle's original Volkswagen warranty period. You will receive help in the event of a breakdown or accident and if required, your vehicle will be mobilised or transported to an Authorised Volkswagen dealer.

As a Volkswagen owner you will also have access to the additional benefits of accommodation and car rental if your vehicle cannot be mobilised within 24 hours, when you are over 100kms away from home. Volkswagen Roadside Assist can also be renewed at the expiry of the original warranty, ensuring ongoing coverage for your vehicle.

Volkswagen New Vehicle Extended Warranty Insurance*

To give you added peace of mind and the assurance of added security, you have the option to extend the warranty period to suit your ownership cycle. If your Volkswagen is still covered by its New Vehicle Warranty, we can offer you a 12 months or 24 months/ unlimited kilometres extension on the original warranty period already existing with your Volkswagen manufacturer's Warranty. You then have the assurance that your Volkswagen remains a Volkswagen. For further information regarding warranty and extending your vehicle's warranty period, please consult your local Volkswagen dealer, refer to your owner's handbook or visit volkswagen.com.au.

* Volkswagen New Vehicle Extended Warranty Insurance product is provided by Allianz Australia Insurance Limited (Allianz) ABN 15 000 122 850, AFSL Licence No. 234708. In arranging this cover, Volkswagen Group Australia Pty Ltd, ABN 14 093 117 876 and the authorised dealers act as agents of Allianz and not as your agent. Limits apply to the benefits you can claim. For full terms and conditions of cover, please refer to the relevant Volkswagen New Vehicle Extended Warranty Insurance policy document, available to you from your Volkswagen authorised motor dealer.

Volkswagen Genuine Accessories®

Volkswagen Genuine Accessories® are designed for your vehicle and approved by Volkswagen, with particular regard to safety. The workmanship, dimensional accuracy and materials used in these parts comply with factory specifications. To ensure safety and reliability, Volkswagen recommends the use of Volkswagen Genuine Accessories®. Volkswagen Authorised Dealers offer a 3-years/ unlimited kilometres warranty on genuine accessories if fitted prior to vehicle purchase, or a 2-years/ unlimited kilometres warranty if fitted after purchase.

Volkswagen Finance

Whether you are buying, borrowing or leasing, Volkswagen Finance will certainly make you think differently about financing and insuring your new Volkswagen. Committed to meeting the needs of Volkswagen drivers across Australia, we offer a range of leasing, financing and insurance products, each with distinct advantages depending on your specific circumstances. Our packages are designed to suit your individual requirements and budgeting needs with fast approval times.

Speak to your participating local Volkswagen Dealer today for the best financial solution and ultimate insurance protection for your vehicle or visit volkswagenfinance.com.au.

VOLKSWAGEN FINANCE



Think Blue.

Creating a sustainable future together

Volkswagen is committed to sustainability now and in the future, for us this means taking responsibility for the environment by getting involved in initiatives that contribute to a sustainable future through our products and behaviour.

We call this way of thinking, Think Blue. Volkswagen aims to become the leading automotive manufacturer for the environment and economy, making efficient and sustainable vehicles available to everyone. We want to inspire and motivate people to get involved in ecological sustainability, on the road and everywhere else.



Volkswagen Group Australia Pty Ltd
24 Muir Road Chullora NSW 2190
ABN 14 093 117 876

Printed in Australia
August 2013

Publication: **VGAJETMY135**



Volkswagen is distributed by Volkswagen Group Australia Pty Ltd, 24 Muir Road, Chullora, NSW 2190, ABN 14 093 117 876. Specifications are as planned at January 2013, for Model Year 2013 and are subject to change without notice or obligation. All information in this specification sheet is correct at the time of publication, however variations may occur from time to time and Volkswagen, in so far as it is permitted by law to do so, shall not be liable in any way as a result of any reliance by any person on anything contained in this specification sheet. Authorised Volkswagen dealers will provide up-to-date information on model application, design feature, prices and availability on request.

Volkswagen Insurance & Volkswagen Extended Warranty are provided by Allianz Australia Insurance Limited (Allianz), AFS Licence No. 234708, ABN 15 000 122 580. In arranging this insurance Volkswagen Financial Services Australia Pty Limited, ABN 20 097 071 460 & Volkswagen Group Australia Pty Ltd, ABN 14 093 117 896 and the authorised dealers act as agents of Allianz and not as your agent. Volkswagen Finance is a trading name of Volkswagen Financial Services Australia Pty Limited. Locked Bag 6252, Regents Park NSW 2143. Tel: 02 9695 6311.