



Commercial
Vehicles

The Transporter

Specifications



Features and Specifications

Safety and security	Van	Crewvan	Single Cab	Dual Cab
Airbags				
Front airbag for driver and front passenger	●	●	●	●
Side/head airbags for driver and front passenger	●	●	●	●
Seat belts				
3-point seat belts with height adjustment and belt tensioners for driver and front passenger	●	●	●	●
3-point seat belts in 2nd row of seats, outer seats with seat belt tensioners	—	●	—	●
Seat belt warning light and buzzer for driver's seat	●	●	●	●
Child Restraints				
Child seat top tether anchorage points (for 2nd row outer seats)	—	●	—	—
ISOFIX child seat anchorage points (for 2nd row outer seats)	—	●	—	—
Brakes and Traction Control				
Multi-Collision Brake (MCB)	●	●	●	●
Electronic Stabilisation Programme (ESP)	●	●	●	●
Anti-Lock Braking System (ABS)	●	●	●	●
Brake Assist System (BA)	●	●	●	●
Traction Control System (TCS)	●	●	●	●
Electronic Differential Lock (EDL)	●	●	●	●
Hill Hold Control	●	●	●	●
Driver Assistance Technology*				
Driver Fatigue Detection	●	●	●	●
Rear Park Distance Control, with acoustic warning	●	●	—	—
Rear View Camera System (requires lifting tailgate)	○	○	—	—
Forward Collision Warning "Front Assist" with City Emergency Braking (City EB)**	●	—	—	●
Adaptive Cruise Control (ACC)**	○	—	—	○
Lighting				
Halogen headlights (H4)	●	●	●	●
Headlight range adjustment	●	●	●	●
Daytime Running Lights (DRL)	●	●	●	●
High stop light	●	●	—	—
Rear fog light	●	●	●	●

*Safety technologies are designed to assist the driver, but should not be used as a substitute for safe driving practices.

**Only available on TDI 450 model.

● Standard ○ Optional Extra — Not available

Safety and security	Van	Crewvan	Single Cab	Dual Cab
Locking				
Engine immobiliser (electronic)	●	●	●	●
Central locking system with radio remote control, and interior release mechanism	●	●	—	—
Central locking system with radio remote control	—	—	●	●
Two (2) remote control folding keys and one (1) rigid key	●	●	●	●
Child safety locks on rear sliding doors	—	●	—	—
Head Restraints				
Front safety optimised head restraints, height adjustable	●	●	●	●
Rear head restraints, height adjustable (3)	—	●	—	●

Exterior Equipment / Styling

Roof				
Standard roof height	●	●	●	●
Medium roof height	○	○	—	—
High roof height (with high rear wing doors)	○ LWB front wheel drive only	—	—	—
Doors				
Sliding door, left, in load/passenger compartment	●	●	—	—
Sliding door, right, in load/passenger compartment	○	●	—	—
Lifting tailgate with window (available for standard and medium height roof)	●	●	—	—
Rear wing doors with windows	○	○	—	—
Hinges for rear wing doors with opening angle of 250°	○ LWB only	○ LWB only	—	—
Electric sliding doors	○	○	—	—
Power latching tailgate	○	○	—	—
Windows				
Heat-insulating windshield made of laminated glass	●	●	●	●
Heat-insulating glass (green)	●	●	●	●
Windscreen wiper intermittent control	●	●	●	●
Heated rear window(s)	●	●	●	●
Rear window wiper/washer system	●	●	—	—
Power windows with comfort operation and circuit breaker (front)	●	●	—	—
Side windows (fixed) in rear doors	—	—	—	●
Side window (fixed) in sliding door, left	○	—	—	—
Side window (fixed) in sliding door or closed panel, right	○	—	—	—
Side window (slide opening) in sliding door, left	○	●	—	—
Side window (slide opening) in sliding door or closed panel, right	○	●	—	—

● Standard ○ Optional Extra — Not available

Exterior Equipment / Styling	Van	Crewvan	Single Cab	Dual Cab
Body Enhancements				
Black bumpers	●	●	●	●
Black grained radiator grille with 1 decorative chrome molding	●	●	●	●
Black exterior mirror housings and door handles	●	●	●	●
Body coloured sliding door rail cover	●	●	—	—
Body coloured bumpers	—	—	○	○
Body coloured bumpers, exterior mirror housings and door handles	○	○	—	—
Front mud guards	●	●	●	●
Rear mud guards	●	●	—	—
Trailer hitch preparation	●	●	●	●
Wheels and Tyres				
16" steel wheels with centre wheel trim - 215/65 R16 C106/104T tyres	TDI340	●	●	—
17" steel wheels with centre wheel trim - 235/55 R16 103H rf tyres	TDI400/TDI450	—	—	●
4 x 17" alloy wheels - DEVONPORT - 235/55 R16 103H rf tyres	○	○	○	○
Steel spare wheel - full size, OE tyre	●	●	●	●
Tool kit with vehicle jack	●	●	●	●

● Standard ○ Optional Extra — Not available

Comfort & Convenience	Van	Crewvan	Single Cab	Dual Cab
Air Conditioning				
Front air conditioning system, "climatic" manual	●	●	●	●
Dust and pollen filter	●	●	●	●
Rear air conditioning system with 2nd evaporator, 2nd heater and separate controls (requires full side trim in largo compartment)	○	○	—	—
Cruise Control				
Cruise Control	●	●	●	●
Floor Covering				
Rubber floor covering in cab	●	●	●	●
Rubber floor covering in load/passenger compartment (includes step illumination)	○	●	—	—
Universal floor covering in load area (includes step illumination)	○	—	—	—
In-Car Entertainment and Technology				
Composition Colour audio system 5" colour touch screen display, AM/FM radio with phase diversity tuner, CD player (MP3/WMA compatible), AUX and SD card slot, external USB input, and four (4) speakers. Car menu with convenience and service settings. Includes display for park distance control (if fitted).	●	●	●	●
Composition Media audio system with App-Connect- 6.33" colour touch screen display with proximity sensor, AM/FM radio, CD player (MP3/WMA compatible), SD card slot, external AUX and USB inputs, and four (4) speakers. Car menu with convenience and service settings. Includes display for park distance control (if fitted). App-Connect USB interface for Apple CarPlay®, Android Auto™ and MirrorLink® in front centre console.	○	○	○	○
Discover Media audio and satellite navigation system with App-Connect- and Volkswagen Media Control 6.33" colour touch screen display with proximity sensor, AM/FM radio, CD player (MP3/WMA compatible), 2 x SD card slots for music and navigation data, external AUX and USB inputs, and four (4) speakers. 2D and 3D (bird's eye) map views. Car menu with convenience and service settings. Includes display for park distance control (if fitted). App-Connect USB interface for Apple CarPlay®, Android Auto™ and MirrorLink® in front centre console.	○	○	○	○
Voice Control (available with Discover Media only)	○	○	○	○
Bluetooth® phone connectivity with contacts display and Bluetooth® audio streaming, operation via touch screen audio unit or Multi-Function Display	●	●	●	●
Audio, telephone, cruise control and Multi-Function Display controls mounted on steering wheel	●	●	●	●
12-volt socket on dashboard (cigarette lighter)	●	●	●	●
Instrumentation				
Speedometer & tachometer, electronic odometer and trip meter, service interval display, fuel and coolant gauges, low fuel warning light, adjustable illumination	●	●	●	●
Multi-Function Display (MFD Plus) - trip time, trip length, average and current speed, average and current fuel consumption, display until empty and ambient temperature, digital clock, vehicle status, audio, telephone and navigation (if fitted) menus	●	●	●	●

-App-Connect is compatible for selected apps with the latest smartphone versions of iOS and Android, active data service, and connection cable (sold separately).

● Standard ○ Optional Extra — Not available

Comfort & Convenience	Van	Crewvan	Single Cab	Dual Cab
Interior Lighting				
Reading lights, front	●	●	●	●
Roof light in load compartment	●	●	—	—
Load Compartment				
Lashing rings for load restraint	6 (8 for LWB)	6 (8 for LWB)	—	—
Hardboard side trim panels , half	●	●	—	—
Additional hardboard side trim panels , full	○	●	—	—
Partition (high) with fixed window	○	—	—	—
Mirrors				
Exterior mirrors (left: convex, right: aspherical)	●	●	—	—
Exterior mirrors on extension braces (left: convex, right: convex)	—	—	●	●
Exterior mirrors, power adjustable and heated	●	●	●	●
Dimming breakaway interior rear view mirror	●	●	●	●
Power Steering				
Rack and pinion power steering	●	●	●	●
Seating				
Height adjustment for driver's seat	●	●	●	●
Lumbar support (manually adjustable) for driver's seat	●	●	●	●
Front passenger bench seat with under-seat storage	○	—	●	○
3-seater bench in 2nd row of seats (folding, tipping, removable)	—	●	—	—
3-seater bench in 2nd row of seats (fixed, with under-seat storage)	—	—	—	●
Cloth seat covering "Austin"	●	●	●	●
Grab handle for front passenger	●	●	●	●
Grab handles on A pillar for driver and front passenger	—	—	●	●
Steering Wheel				
3 spoke leather covered steering wheel	●	●	●	●
Audio, telephone, cruise control and Multi-Function Display controls mounted on steering wheel	●	●	●	●
Steering wheel height and tilt adjustment	●	●	●	●

● Standard ○ Optional Extra — Not available

Comfort & Convenience	Van	Crewvan	Single Cab	Dual Cab
Storage				
Front door pockets	●	●	●	●
Front sunvisors with ticket holder	●	●	●	●
Overhead storage compartment	●	●	●	●
Glove compartment with lockable lid	●	●	●	●
Two (2) cup holders on upper dashboard	●	●	●	●
Central upper storage compartment (open)	●	●	●	●
Two (2) open storage compartments above glovebox	●	●	●	●
Two (2) small storage compartments between glovebox and gear lever	●	●	●	●
Open storage area on either side of dashboard	●	●	●	●
Ashtray, portable	●	●	●	●

Body Builder Items

Electrical interface (terminal block under driver's seat)	●	●	●	●
Second battery (with cut-off relay)	○	○	○	○

Optional Packages	Van	Crewvan	Single Cab	Dual Cab
Driver Assistance Package*				
Side Assist includes power folding mirrors# - for short wheelbase Van and Crewvan only				
Front fog lights with static cornering function				
Light and Vision system: auto dimming inside rear view mirror; automatic headlight activation with separate daytime running lights, "Leaving Home" and manual "Coming Home" function; rain sensing wipers	○#	○#	○#	○#
Interior Comfort Package				
Light and Vision system: auto dimming inside rear view mirror; automatic headlight activation with separate daytime running lights, "Leaving Home" and manual "Coming Home" function; rain sensing wipers				
Height adjustment for front passenger's seat				
Lumbar support (manually adjustable) for front passenger's seat				
Armrests for driver and front passenger seats				
Grab handles on A pillar for driver and front passenger (standard for single cab and dual cab)	○	○	○	○
Vanity mirrors for left and right sun visors				
12-volt socket on upper dashboard				
NOTE: Front passenger seat height adjustment, lumbar support and armrests not available for vehicles with front passenger bench seat				
Load Platform Package				
Load platform with aluminium sides, retaining cables and rear step				
Rear mud guards	—	—	○	○
Available for additional cost: Side drive-under protection				

*Safety technologies are designed to assist the driver, but should not be used as a substitute for safe driving practices.

#Side Assist is only available for short wheelbase Van and Crewvan only. The Driver Assistance Package for long wheel base Van and long wheel base Crewvan as well as Single Cab and Dual Cab does not include "Side Assist".

● Standard ○ Optional Extra — Not available

Technical Specification

Engine	2.0 litre TDI340 BlueMotion Technology		2.0 litre TDI400 BlueMotion Technology		2.0 Litre TDI450 BlueMotion Technology			
Type	4 cylinder inline turbocharged direct injection diesel with engine Start/Stop system^		4 cylinder inline bi-turbo direct injection diesel with engine Start/Stop system^		4 cylinder inline bi-turbo direct injection diesel with engine Start/Stop system^			
Max power, kW @ rpm	103 @ 3,500		132 @ 4,000		150 @ 4000			
Max torque, Nm @ rpm	340 @ 1,750-2,500		400 @ 1,500-2,000		450 @ 1400-2400			
Cubic capacity, litres/cc	1,968		1,968		1,968			
Bore/stroke (mm)	81.0 x 95.5		81.0 x 95.5		81.0 x 95.5			
Compression ratio	16.5:1		16.5:1		15.5:1			
Fuel type (recommended)	Diesel DIN EN 590		Diesel DIN EN 590		Diesel DIN EN 590			
Transmission	6 Speed Manual	7 Speed DSG	7 Speed DSG		6 Speed Manual		7 Speed DSG	
Driven wheels	Front Wheel Drive	Front Wheel Drive	Front Wheel Drive	All Wheel Drive	Front Wheel Drive	All Wheel Drive	Front Wheel Drive	All Wheel Drive
Fuel Consumption** - Van / Crewvan	TDI340 Manual	TDI340 DSG	TDI400 DSG	TDI400 DSG 4Motion	TDI450 Manual	TDI450 Manual 4Motion	TDI450 DSG	TDI450 DSG 4Motion
Combined, L/100km	7.2	7.7	7.6	8.3	6.8	7.0	6.6	6.8
Urban, L/100km	9.1	9.5	8.8	9.7	8.1	8.7	7.7	7.9
Extra Urban, L/100km	6.1	6.7	6.9	7.5	6.1	6.1	6.1	6.2
Fuel tank capacity (L)	80	80	80	80	80	80	80	80
Fuel Consumption** - Cab Chassis		Single Cab TDI340 DSG	Dual Cab TDI400 DSG		Dual Cab TDI450 Manual	TDI450 Manual 4Motion	TDI450 DSG	TDI450 DSG 4Motion
Combined, L/100km		7.2	7.9		7.4	7.7	7.0	7.3
Urban, L/100km		9.5	8.8		8.4	8.9	7.7	8.0
Extra Urban, L/100km		8.0	7.3		6.8	6.9	6.6	7.0
Fuel tank capacity (L)		80	80		80	80	80	80
Running Gear								
Suspension								
Front Axle	Independent McPherson struts, sub-frame with coil springs and gas filled dampers							
Rear Axle	Semi-trailing independent rear axle with coil springs and anti-roll bar							
Suspension Upgrades	Heavy-Duty and Rough Road suspension packages available							
Steering	Rack and pinion power steering							
Brake systems	Anti-Lock Braking System (ABS) with Electronic Brake-Pressure Distribution (EBD), Brake Assist and Electronic Stabilisation Program (ESP). Brake Energy Recuperation.							
Brakes	Power assisted Hydraulic				Power assisted Hydraulic			
Front	Ventilated disc 308mm				Ventilated disc 340mm			
Rear	Ventilated disc 294mm				Ventilated disc 294mm			

^The Start/Stop system is designed to reduce fuel consumption and CO2 emissions. It achieves this by automatically switching off the engine while the vehicle is stationary and then starting it again automatically when the driver wants to drive off. There are certain operating conditions where the Start/Stop system is deactivated (e.g. during engine warm-up), please refer to the owner's manual for full operating information.

**Fuel consumption figures according to ADR 81/02 derived from laboratory testing. Factors including but not limited to driving style, road and traffic conditions, environmental influences, vehicle condition and accessories fitted, will in practice in the real world lead to figures which generally differ from those advertised. Advertised figures are meant for comparison amongst vehicles only.

Weights and Capacity

Weights - Van / Crewvan	SWB Van					LWB Van					SWB Crewvan	LWB Crewvan
	TDI340	TDI400	TDI400 4Motion	TDI450	TDI450 4Motion	TDI340	TDI400	TDI400 4Motion	TDI450	TDI450 4Motion	TDI340	TDI340
Gross Vehicle Weight (GVM, kg)	3,000	3,000	3,000	3,000	3,000	3,000	3,000	3,000	3,000	3,000	3,000	3,000
Unladen Mass ¹ for Standard roof (kg) - Manual	1,747	—	—	—	—	1,804	—	—	1,907	2,020	—	—
Payload ² maximum for Standard roof (kg) - Manual	1,256	—	—	—	—	1,196	—	—	1,093	980	—	—
Unladen Mass ¹ for Standard roof (kg) - DSG	1,764	1,803	1,913	1,869	1,979	1,824	1,860	1,970	1,926	2,036	1,924	1,987
Payload ² maximum for Standard roof (kg) - DSG	1,233	1,197	1,087	1,131	1,021	1,176	1,140	1,030	1,074	964	1,076	1,013
Towing Capacity (kg)#												
Braked	2,500	2,500	2,500	2,500	2,500	2,500	2,500	2,500	2,500	2,500	2,500	2,500
Unbraked	750	750	750	750	750	750	750	750	750	750	750	750
Towbar Load Limit (kg)	100	100	100	100	100	100	100	100	100	100	100	100

Weights - Cab Chassis	LWB Single Cab		LWB Dual Cab	
	TDI340	TDI400	TDI400	TDI450 4Motion
Gross Vehicle Weight (GVM, kg)	3,000	3,000	3,000	3,000
Unladen Mass ¹ (kg) - Manual	—	—	1,918	2,043
Payload ² maximum (kg) - Manual	—	—	1,082	957
Unladen Mass ¹ (kg) - DSG	1,763	1,738	1,949	2,059
Payload ² maximum (kg) - DSG	1,237	1,262	1,051	941

1. The Unladen Mass (UM) includes 10L of fuel, vehicle fluids and no occupants. Figures quoted are for base model vehicles only.

2. Payload figures determined by subtracting 'Unladen Mass' (UM) from total 'Gross Vehicle Mass' (GVM). A vehicle's final payload, given the different configurations, can only be determined by weighing the individual vehicle and comparing to the known GVM. Figures quoted are for base model vehicles only.

When fitted with Volkswagen Genuine Tow Bar. Towing capacities are applicable to Volkswagen Genuine Accessory Tow Bar. Towing capacity figures are maximum figures and actual towing capacity depends on factors including the laden mass of the vehicle, driving conditions and fitment of any accessories. Volkswagen Group Australia does not endorse or will not be held liable for any claim, loss or damage arising from the use or fitment of electronic trailer brakes.

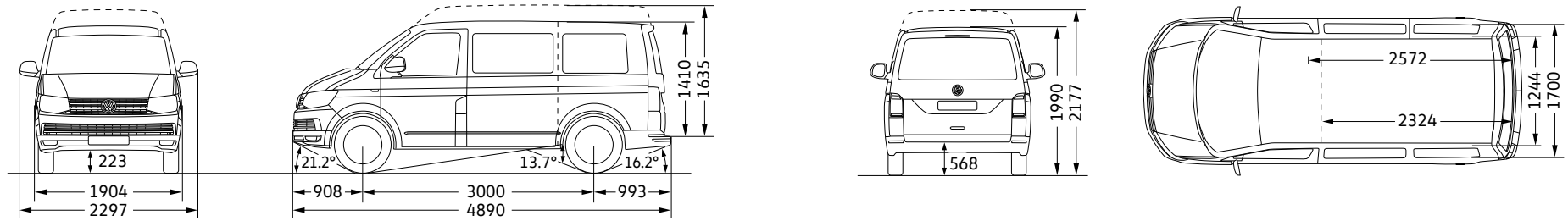
● Standard ○ Optional Extra — Not available

Weights and Capacity

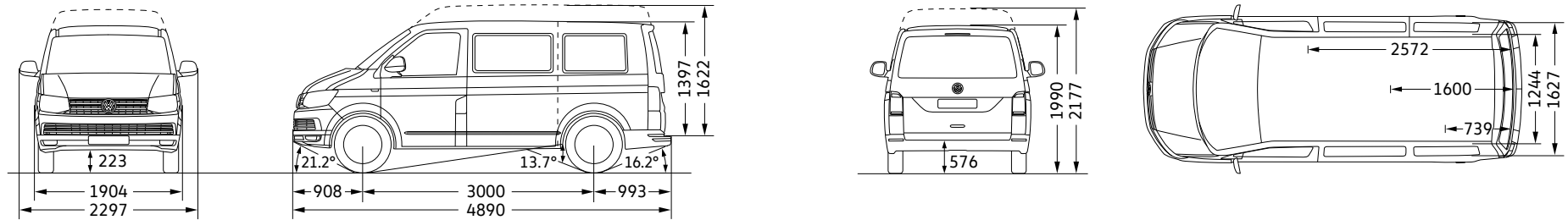
Interior	SWB Van	SWB Crewvan	LWB Van	LWB Crewvan	LWB Single Cab	LWB Dual Cab
Seating capacity	2 (3 optional)	5 (2 + 3)	2 (3 optional)	5 (2 + 3)	3	5 (2 + 3) 6 optional (3 + 3)
Cargo Volume (L) - behind 1st row, Standard roof	5,800	5,800	6,700	6,700	—	—
Cargo Volume (L) - behind 1st row, Medium roof	6,700	6,700	7,800	7,800	—	—
Cargo Volume (L) - behind 1st row, High roof	—	—	9,300	9,300	—	—
Load Compartment Length (mm) - without rear seats	2,572	2,572	2,975	2,938	—	—
Load Compartment Length (mm) - behind 2nd row of seats	—	1,600	—	1,967	—	—
Load Compartment Width (mm) - maximum	1,700	1,627	1,700	1,627	—	—
Load Compartment Width (mm) - at wheel arches	1,244	1,244	1,244	1,244	—	—
Load Compartment Height (mm) - Standard roof	1,410	1,397	1,410	1,394	—	—
Load Compartment Height (mm) - Medium roof	1,635	1,622	1,635	1,619	—	—
Load Compartment Height (mm) - High roof	—	—	1,940	1,924	—	—
Sliding Door Width (mm)	1,017	1,017	1,017	1,017	—	—
Sliding Door Height (mm)	1,282	1,264	1,282	1,264	—	—
Tailgate / Rear Wing Door Width (mm) - Standard/ Medium roof	1,473	1,473	1,473	1,473	—	—
Tailgate / Rear Wing Door Height (mm) - Standard/ Medium roof	1,299	1,290	1,299	1,290	—	—

Dimensions

SWB Van

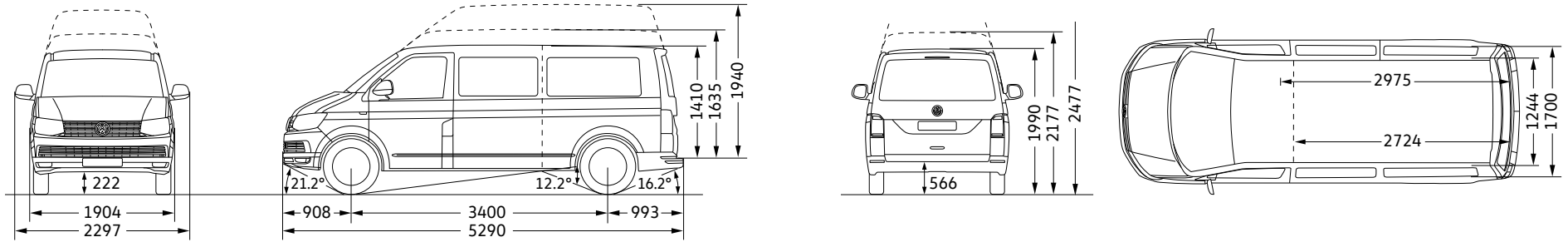


SWB Crewvan

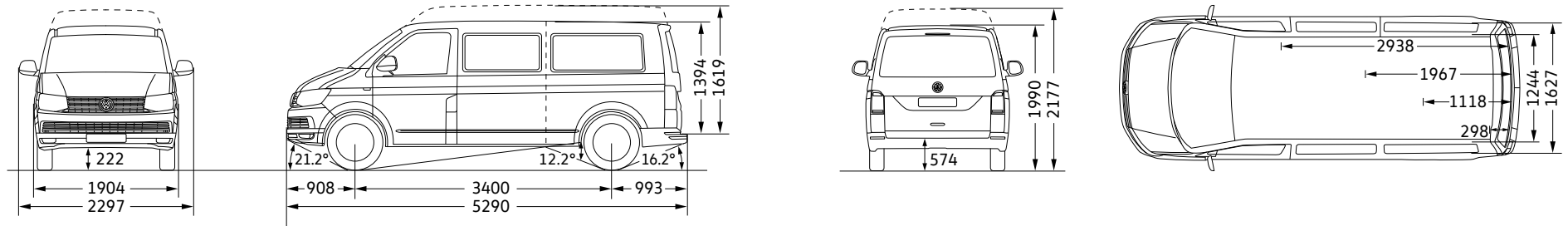


Dimensions

LWB Van*



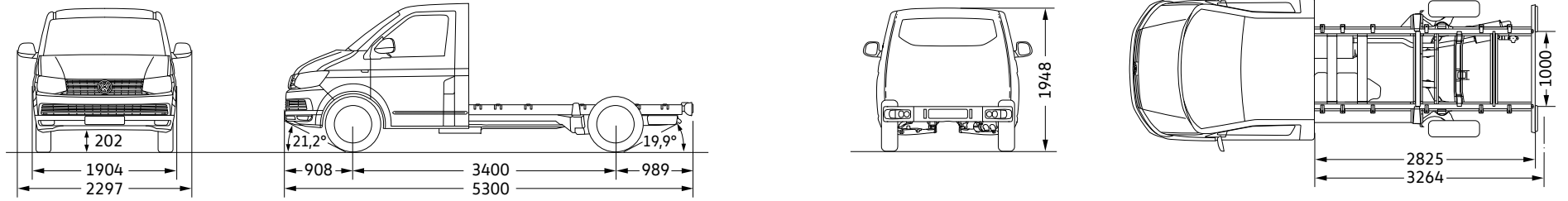
LWB Crewvan



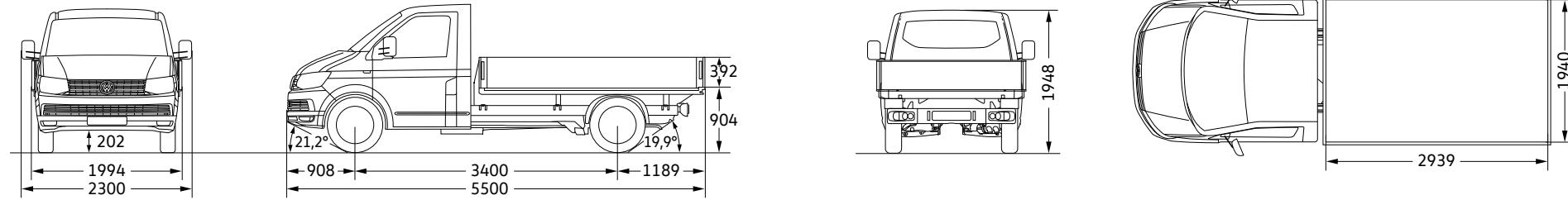
*High roof not available in conjunction with long wheelbase 4MOTION models. Full vehicle specifications and dimensions are available at www.volkswagen-commercial.com.au

Dimensions

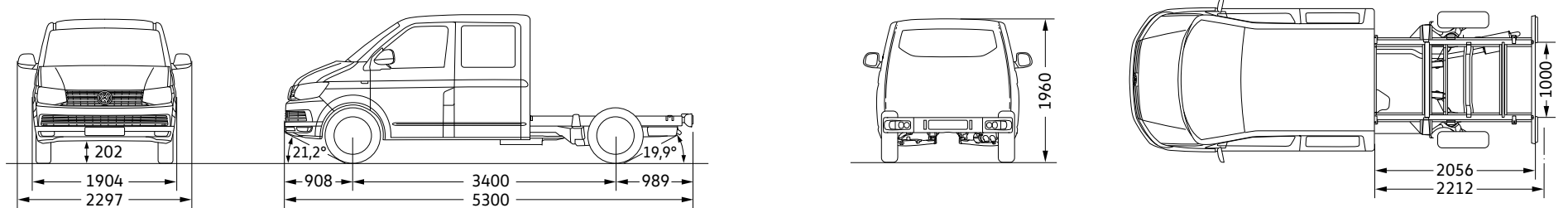
Single Cab Chassis



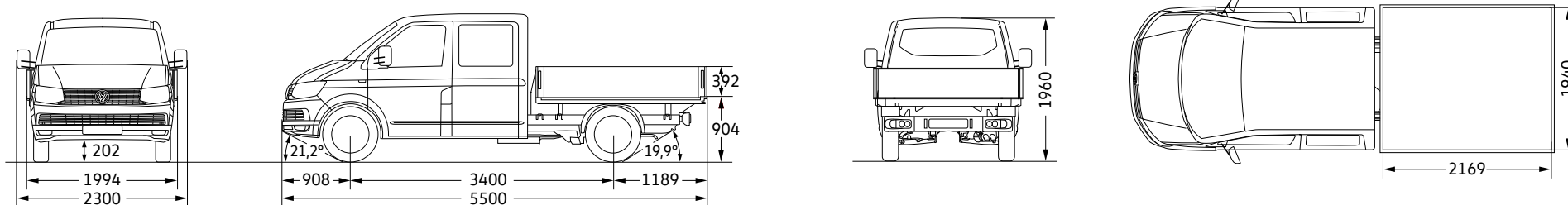
Single Cab Chassis with Optional Tray



Dual Cab Chassis



Dual Cab Chassis with Optional Tray



Solid paint finishes



Candy White | Solid paint finish | B4B4



Pure Grey | Solid paint finish | J2J2



Deep Ocean | Solid paint finish | OPOP



Luminous Orange | Solid paint finish | E3E3



Cherry Red | Solid paint finish | 4B4B



Summer Blue | Solid paint finish | E2E2



Bamboo Green | Metallic paint finish | 3T3T



Starlight Blue | Metallic paint finish | 3S3S



Acapulco Blue | Metallic paint finish | 2W2W



Curcuma Yellow | Metallic paint finish | 6T6T



Reflex Silver | Metallic paint finish | 8E8E



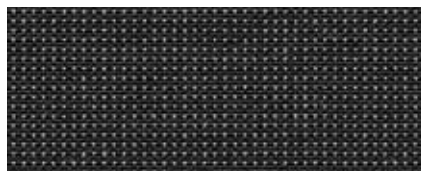
Indium Grey | Metallic paint finish | X3X3



Deep Black | Pearl effect paint finish | 2T2T



Chestnut Brown | Metallic paint finish | H4H4



Austin
Cloth seat upholstery | Titanium Black / Moon Rock Grey

Seat upholstery

Wheels



17" alloy wheel
- DEVONPORT

Optional for Van, Crewvan and Cab Chassis

Volkswagen Choice: Protecting your investment

We're out to prove that there still are some guarantees in life. We've developed Volkswagen Choice[^] - a flexible finance solution that provides you with the assurance of knowing exactly what the minimum value of your vehicle will be down the track. With Volkswagen Choice[^], you can enjoy your car without worrying about what the future will bring, providing peace of mind.

Volkswagen Choice

Guaranteed Future Value

- Step 1** Choose your favourite Volkswagen model.
- Step 2** Choose your preferred term from between 12 and 48 months, along with an annual km allowance and repayment options that suit your lifestyle.
- Step 3** At the end of your chosen term, select from one of the three below end of term options:



Trade in

If you wish to trade-in your Volkswagen for a new vehicle, all you need to do is return it to the dealership. If the trade-in value is higher than the Guaranteed Future Value[^], you can use this equity towards your new vehicle purchase.



Retain

If you prefer to retain your Volkswagen, simply let us know. Provided that you also meet the relevant payment obligations under your contract, you can purchase your vehicle outright for the Guaranteed Future Value price locked in at the start of the contract[^]. Then your Volkswagen is yours to keep. Or you can choose to refinance your balloon at the end of the term.



Return

Return your vehicle and, if it meets the agreed kilometre and fair wear and tear requirements[^], you will have no more to pay.



To find out more, go to <https://www.volkswagen.com.au/en/financial-services/guaranteed-future-value.html>

[^]The Volkswagen Choice Program consists of an option to return the vehicle to Volkswagen Financial Services (VFS)** at the end of the term and require VFS** to purchase the vehicle at an agreed price known as the Guaranteed Future Value or GFV as determined by VFS** and set out in your contract. At the end of the term, you can elect to: (1) trade-in the vehicle; (2) exercise the option to return the vehicle; or (3) retain the vehicle by paying the GFV. The GFV is not a representation by VFS** as to the likely market value of the vehicle as at the end of your contract. The option is available on new and demonstrator Volkswagen vehicles for selected models only. Please verify with your dealership the vehicles that are eligible for the program. The GFV will be reduced, and you will be liable for any loan contract deficit, if you exceed the nominated kilometre allowance and/or the vehicle is not in an acceptable condition in accordance with the Fair Wear and Tear Guide available at www.volkswagen.com.au. Other terms and conditions apply. The cost of the Volkswagen Choice Program is incorporated into the applicable interest rate. Please read the full terms and conditions. Please consider whether these products and services are appropriate for your circumstances. Before acting on any of the information on this page, please seek independent financial and tax advice. Full terms and conditions are available upon application. Available only to approved applicants of VFS**. Subject to credit assessment. Standard fees and charges apply. Fleet, government, rental buyers, hire car and chauffeur companies are excluded. Available at participating Volkswagen dealers. **VFS is a trading name of Volkswagen Financial Services Australia Pty Limited ABN 20 097 071 460. Australian Credit Licence 389344.

The Transporter

Volkswagen Group Australia Pty Ltd
24 Muir Road Chullora NSW 2190
ABN 14 093 117 876

Printed in Australia
October 2018
www.volkswagen.com.au

Publication: VWCTRANSPEMYC19

Your Volkswagen Dealer.

Important information

Apple CarPlay® is a registered trade mark of Apple Inc. Android Auto™ is a registered trade mark of Google Inc. MirrorLink® is a registered trade mark of Car Connectivity Consortium LLC. Bluetooth® is a registered trade mark of Bluetooth SIG Inc.

Volkswagen is distributed by Volkswagen Group Australia Pty Ltd (ABN 14 093 117 876) of 24 Muir Road Chullora, NSW 2190. Specifications are as planned at October 2018, for Model Year 2019 and are subject to change without notice or obligation. All information in this brochure are correct at the time of publication, however variations may occur from time to time and Volkswagen, in so far as it is permitted by law to do so, shall not be liable in any way as a result of any reliance by any person on anything contained in this brochure. Authorised Volkswagen Dealers will provide up-to-date information on model application, design feature, prices, and availability on request.