



Commercial
Vehicles



The Amarok V6 W-Series



Commercial
Vehicles



WALKINSHAW

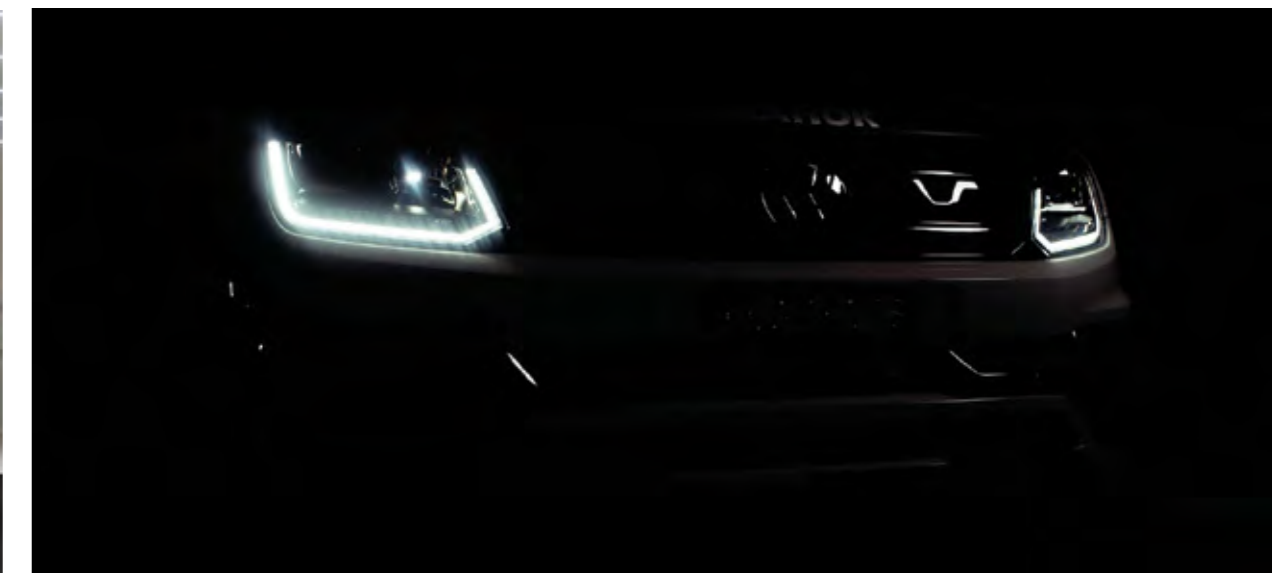
Since the launch of the Amarok V6 in 2016 Volkswagen have felt the Amarok deserved a flagship performance variant for both on and off-road.

Walkinshaw, synonymous with performance, quickly established themselves as Volkswagen's partner of choice due to their passion and expertise in design, engineering and production.

Built in collaboration with



With 580Nm of torque and 200kW of power on overboost, the expert engineers at Walkinshaw knew they had the ultimate platform to design the greatest on-road and off-road dual cabs in the market.



The Walkinshaw design team focused on making the Amarok V6 W-Series wider and more aggressive, with a completely redesigned front bumper, air intake grille, wheel arch flares, and uniquely forged alloy wheels with off-road tyres. The W-series interior also features unique Walkinshaw branded floor matts and headrests.

A Force to be reckoned with

3.0L TDI580 (190kW, 580Nm) overboost function up to 200kW

- 0-100km in 7.3 seconds
- 3,500kg Braked Towing Capacity[^]



W580S shown

The engine and gearbox combination ensures optimum performance and driving engagement. Peak power surges to 200kW, with performance optimised in 3rd and 4th gear, the Overboost function increases the engine's output for up to ten seconds, making it ideal for overtaking. 4MOTION all-wheel drive provides exceptional traction on virtually any surface, while the 8 speed ZF Automatic ensures smooth power delivery. With great power comes great responsibility, that is why the Amarok V6 is fitted with powerful 4-wheel disc brakes.

[^] When fitted with Volkswagen Genuine Tow Bar. Towing capacities are applicable to Volkswagen Genuine Accessory Tow Bar. Towing capacity figures are maximum figures and actual towing capacity depends on factors including the laden mass of the vehicle, driving conditions and fitment of any accessories. Volkswagen Group Australia does not endorse or will not be held liable for any claim, loss or damage arising from the use or fitment of electronic trailer brakes.

How will you **take the reins?**



Amarok **V6 W580**

- 20" Alloy 'Clayton' wheels
- Pirelli Scorpion ATR Tyres (275 / 50 R20)
- Front suspension lift and tune (MTV twin tube dampers)
- Rear suspension tune (MTV twin tube dampers)
- Black interior headlining
- Bonnet protector
- Decals – Side (doors)
- Wheel arch extensions
- New front upper grille design
- Front bumper inserts (fog lamp surrounds)
- Black exterior mirror housing and rear bumper
- Tailored W580 branded carpet mats
- Headrests with Walkinshaw branding
- Bi-xenon headlamps with LED daytime running light lamps
- Anti-theft alarm system
- Dual zone climatronic air conditioning
- Art Verlour seat trim
- Multi-function steering wheel with paddle shifters
- Composition media with App-Connect-
- Tyre pressure monitoring system
- LED fog lamps



Amarok **V6 W580S**

W580, plus:

- Sail plane styling bar
- 5 piece protective tub liner
- Tuned and branded stainless steel twin exhaust
- Vienna leather two-toned appointed upholstery[#]
- Discover Media Navigation
- 14 way adjustable Ergo Comfort heated front seats
- Instrument cluster with centre colour multifunction display
- Front under body styling element
- Bonnet decals
- electric folding mirrors
- LED fog lamps with cornering function



Amarok **V6 W580X**

- 18" Alloy wheels (265/60 R18 Tyres)
- Front suspension lift and tune (off-road tune)
- Seikel underbody protection (Rear Diff & Transmission & Transfer Case)
- Breather kit (Front & Rear Diff/Transmission & Transfer Case)
- Seikel Snorkel [^]
- Custom Alloy Bash Plate and Rock Sliders
- New decal design – side
- 75w LED light bar with integrated switch
- W580X branded rubber mats
- Bonnet protector
- New front upper grille design
- Wheel arch extensions
- Front bumper inserts (fog lamp surrounds)
- Headrests with Walkinshaw branding

[#] Leather appointed seats have a combination of genuine and artificial leather, but are not wholly leather.

[^] Optional Seikel Snorkel available, sold separately.

-App-Connect is compatible for selected apps with the latest smartphone versions of iOS and Android, active data service, optional connection cable (sold separately).

The Amarok V6 **W580**



Highlights

A true **GT Thoroughbred**

- 200kW of power on overboost
- 20" x 9" custom forged "Clayton" alloy wheels
- Pirelli Scorpion ATR tyres
- Front suspension lift and tune
- New design front upper grille and fog lamp surrounds
- Wheel arch flare suspension

Tackle and terrain with the Amarok V6 **W580**

Say hello to an animal like no other. Trained in collaboration with the experts at Walkinshaw, the Amarok V6 W-Series is an aggressive, high-performance beast with an unbreakable spirit. Reared to rule on the road, this enhanced Amarok is a force to be reckoned with.

Meet **the beast**

Climb into the powerful beast that is the Amarok V6 W580.



Exterior

- 20" x 9" forged alloy 'Clayton' wheels
- Pirelli Scorpion ATR Tyres (275 / 50 R20)
- Wheel arch extensions
- Front bumper inserts (fog lamp surrounds)
- LED front fog lamps
- Bonnet protector
- Black side steps
- Decals – Side (doors)
- Bi-xenon headlamps with LED daytime running light lamps
- Black exterior mirror housing and rear bumper

Mechanical

- Tyre pressure monitoring system
- front suspension lift and tune (MTV twin tube damper)
- Rear suspension tune (MTV twin tube damper)

Interior

- Dual zone climatronic air conditioning
- Walkinshaw branded head rests
- W580 tailored carpet mats
- Interior branded / numbered plaque
- Art Velour seat trim
- Multi-function steering wheel with paddle shifters



The Amarok V6 **W580S**



Highlights

Tuned as a GT delivering an exhilarating drive experience the **W580S**

W580, plus:

- Sail plane styling bar
- 5 piece protective tub liner
- 14 way adjustable Ergo Comfort heated front seats
- Front under body styling element
- Bonnet decals
- Discover media navigation

Reared **for the road**

A true GT, which is both powerful and dynamic, with bold and aggressive styling to match. The W580S combines luxury and power like no other.

Creating a new **Aussie icon**

Nobody knows performance like Walkinshaw. Synonymous for success both on and off the track, Walkinshaw is the perfect partner to take the powerful Amarok V6 to the next level with aggressive styling and GT-inspired tuning.



Exterior

- 20" x 9" forged alloy 'Clayton' wheels
- Pirelli Scorpion ATR Tyres (275 / 50 R20)
- Wheel arch extensions
- New front upper grille design
- New lower bumper inserts and fog lamp surround design
- LED front fog lamps
- Bonnet protector
- Decals – Side (doors)
- Decals – Bonnet
- Decals – Side (lower tub)
- 5 piece protective tub liner
- Electric folding mirrors
- LED fog lamps with cornering function

Mechanical

- Front suspension lift and tune (MTV twin tube damper)
- Rear suspension tune (MTV twin tube damper)
- Tuned and branded stainless steel twin exhaust

Interior

- Walkinshaw branded head rests
- W580 tailored carpet mats
- Interior branded / numbered plaque
- Vienna leather appointed upholstery# in black and grey
- 14 way adjustable Ergo Comfort heated front seats
- Discover Media Navigation
- Instrument cluster with centre colour multifunction display



Leather appointed seats have a combination of genuine and artificial leather, but are not wholly leather.

The Amarok V6 **W580X**



Highlights

The **off-road ready beast**

- 200kW of power on overboost
- Custom Forged 18" Alloys
- Pirelli Scorpion AT-Plus Tyres (265/60 R18)
- LED Light Bar
- Custom Amarok Bash Plate
- Underbody protection
- Rear differential guard
- Breather Kit front and rear

Try to wrangle this wild off-road beast the Amarok V6 **W580X**

With its 580Nm of torque and 200kW of power on overboost, front suspension lift and robust body armour, the new Amarok V6 W580X is an off-road beast that refuses to be tamed.

Ready for a **wild ride?**

You'll soon discover the unbreakable spirit of the new Amarok V6 W580X. With 580Nm of torque, special off-road 4x4 tuning, front suspension lift and custom body protection mean the off-road is where it longs to be.



Exterior

LED 75W Light Bar

- Walkinshaw custom brackets
- Integrated console switch

Custom Alloy Bash Plate

- 4mm marine grade alloy
- Amarok stamped branding

W580X decal design

Custom Rock Sliders

- Electric resistance Welded Steel Tubing
- Powder Coated Matte Black
- Clamp (brackets) around chassis rail

Wheel and tyre package

- 18" Alloy wheels (265/60 R18 Tyres)
- Front suspension lift and tune (off-road tune)

Interior

- Art Velour seat trim with Walkinshaw Branding
- Heated front seats
- W580X branded rubber mats
- Headrests with Walkinshaw branding
- Multi-function steering wheel with paddle shifters

Optional Luxury pack

- 14 way adjustable Ergo Comfort heated front seats
- Discover Media Navigation

Optional Seikel Snorkel

Mechanical

Suspension Tune

- Front suspension lift & tune
 - 40mm lift /off-road focus tune
- Rear suspension tune
 - off-road focus tune

Breather Kit (Seikel)

- Front & rear differential breather
- Transfer case breather
- Transmission breather
- Vents located high in the engine bay

Refined utility

The Amarok V6 W-Series is the ultimate chameleon, with the perfect mix of utility and refinement. The spacious cabin offers class leading width for maximum comfort, with plenty of room for the whole family. The Amarok W580 and W580X offers premium Art Velour microfleece upholstered seats, in addition to the leather-wrapped multi-function steering wheel with shift paddles. The W580S takes the luxury up a level with front 14-way adjustable ergoComfort seats, wrapped in two-tone Vienna leather#.



App-Connect[~]

With this function, selected apps are mirrored from your smart phone to the touch screen of the radio or navigation system display via the USB port and controlled using the touchscreen.



Climatronic air conditioning

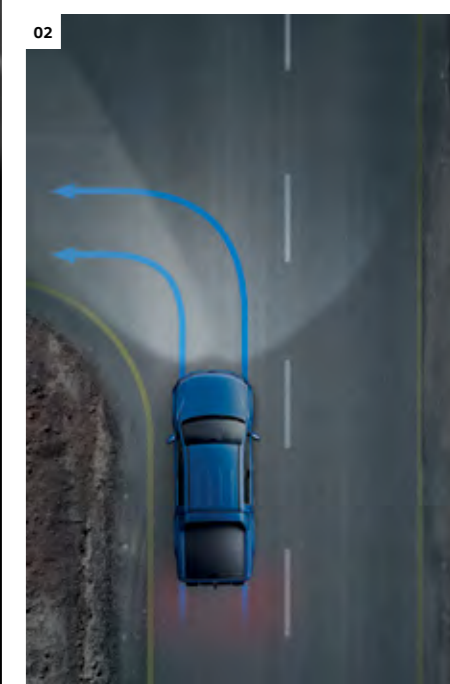
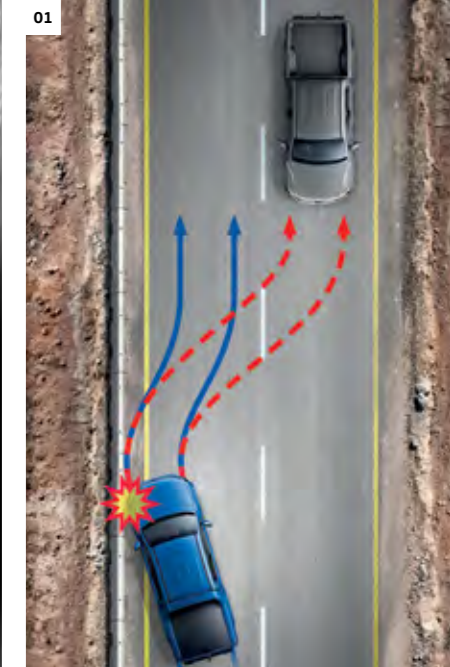
This system offers 2-zone temperature control for the driver and front passenger. Depending on the intensity of the sun's rays and the outside temperature, the air conditioning adds more or less cool air accordingly.



W580S interior shown

Interior Features

- Steering wheel mounted gear (paddle) shifters
- Gloss black dash inserts
- Height and reach adjustable steering wheel
- Headlights with rain sensing wipers
- Walkinshaw branded headrests
- Walkinshaw branded floor mats



01. Automatic Post-Collision Braking System.[^]

Triggers braking after a collision, with the aim of preventing secondary collisions.

02. Static cornering light (W580S only).

Ensures optimal visibility in poor weather conditions. The fog light nearest to the corner illuminates the roadside when turning

Leather appointed seats have a combination of genuine and artificial leather, but are not wholly leather.
 ~ App-Connect is compatible for selected apps with the latest smartphone versions of iOS and Android, active data service, optional connection cable (sold separately).

[^]Safety technologies are designed to assist the driver, but should not be used as a substitute for safe driving practices.

Technical Specification

Engine	3.0 litre V6 TDI580
Type	6 cylinder turbo diesel, 24 valve
Installation	Longitudinal
Cubic capacity, litres/cc	3.0 / 2,967
Bore/stroke, mm	83.0 / 91.4
Max power, kW @ rpm	190 @ 3,250 - 4,500
Max torque, Nm @ rpm	580 @ 1,400 - 3,000
Compression ratio	17.0:1
Fuel system	Bosch EDC17 electronic engine control unit
Exhaust emission control	Water-cooled exhaust gas recirculation (EGR), catalytic converter and diesel particulate filter (DPF)
Fuel type (Recommended)	Diesel EN 590
Fuel tank capacity, litres	80
Battery	450 Amp 95AH Non-AGM
Transmission	8 Speed Automatic
Driven wheels	4x4 (4MOTION) Permanent
Gear Ratio	1st Gear: 4.714 2nd Gear: 3.143 3rd Gear: 2.106 4th Gear: 1.667 5th Gear: 1.285 6th Gear: 1.00 7th Gear: 0.839 8th Gear: 0.667 Reverse Gear: 3.317
Performance#	
0 - 100km/h, seconds	7.3
Fuel Consumption**	
Combined, L/100km	9.5
Urban, L/100km	11.4
Extra Urban, L/100km	8.4
CO ₂ emission, g/km	250

#Please note figures are sourced from overseas data where equipment levels by model variant may vary. **Fuel consumption figures according to ADR 81/02 derived from laboratory testing. Factors including but not limited to driving style, road and traffic conditions, environmental influences, vehicle condition and accessories fitted, will in practice in the real world lead to figures which generally differ from those advertised. Advertised figures are meant for comparison amongst vehicles only.

Technical Specification

Weights	3.0 litre V6 TDI
Unladen Mass ² Kg's	
W580S	2,284
W580	2,227
W580X	2,285
Payload [‡] kg	
W580S	848
W580	905
W580X	847
Gross Vehicle Mass (GVM) kg	3,080
Gross Combined Mass (GCM) kg	6,000
Roof load kg	100
Towbar Capacity [^]	
Braked kg	3500
Unbraked kg	750
Towbar load limit kg	300
Exterior Dimensions	
Overall length mm	5,254
Width mm	2,019
Width incl. mirrors mm	2,228
Height, mm	1,882
Wheelbase mm	3,097
Ground clearance, mm	253
Wading depth, mm	550
Track mm	
Front**	1,712
Rear**	1,708
Tray Dimensions#	
Length, mm	1,555
Width mm (Max.)	1,620
Width mm (between wheel arches)	1,222
Tail gate opening mm (Max.)	1,364
Height (tail gate) mm	508
Load area m ²	2.52
Tie down points	4
Height from ground mm	780

2. The Unladen Mass (UM) includes 10L of fuel, vehicle fluids and no occupants. Figures quoted are for base model vehicles only.

‡Payload is defined as the Gross Vehicle Mass (GVM) minus the Kerb Mass. Payload is the maximum combined weight of occupants, cargo, added structures and tow ball down weight (when towing). GVM must not be exceeded.

Please note figures are sourced from overseas data where equipment levels by model variant may vary.

** Track figures are based on rim off-set of 20.

[^]When fitted with Volkswagen Genuine Tow Bar. Towing capacities are applicable to Volkswagen Genuine Accessory Tow Bar. Towing capacity figures are maximum figures and actual towing capacity depends on factors including the laden mass of the vehicle, driving conditions and fitment of any accessories. Volkswagen Group Australia does not endorse or will not be held liable for any claim, loss or damage arising from the use or fitment of electronic trailer brakes.

Technical Specification

Chassis	Full-length ladder frame chassis in high strength steel Fully galvanised body with 6 year anti-corrosion perforation warranty
Running Gear	3.0 litre V6 TDI
Suspension	Transverse link with A-frame arm double wishbone, MTV twin tube damper and anti-roll bar
Front axle	Multi-layer rigid axle with leaf spring, MTV twin tube damper and stabiliser bar
Rear axle	
Steering	Power assisted rack & pinion steering (Hydraulic)
Brake size	332, Ventilated Discs
Front, mm	300, Ventilated Discs
Rear, mm	
Brake systems	ESP, off-road ABS, ASR, EDL, Hill Holder, Brake Assist, Traction Control and Off-Road ABS including Hill Descent
Turning circle, metres	12.45

Built in collaboration with



Amarok V6 W-Series Paint Finishes

W580S models shown



Candy White



Deep Black (PE)*



Indium Grey (MP)*



Pyrit Silver (MP)*



Atlantic Blue (MP)*

W580S Interior Features



Art Velour Trim
Two-colour microfleece seat upholstery in Palladium/Titanium Black



Vienna Leather# Trim
Two-colour Vienna Leather# upholstery in Palladium Grey /Titanium Black

W-Series Wheel and Tyre Package



18" x 8.5" forged Alloy Wheels | W580X |
With 265/60 R18 Pirelli Scorpion ATR Plus Tyres



20" x 9" forged 'Clayton' Alloy Wheels | W580 | W580S |
With 275/50 R20 Pirelli Scorpion ATR Tyres
Steel spare wheel 255/60 R18 112T

*Please note that Metallic and Pearl affect paint are optional at additional cost The print process does not allow for exact reproduction of the exterior or the upholstery colours.
Leather appointed seats have a combination of genuine and artificial leather, but are not wholly leather.

Volkswagen Accessories

Volkswagen Genuine Accessories ensures your Amarok remains 100% Volkswagen. The extensive range of Amarok Genuine Accessories provides you with the opportunity to adapt your Amarok even more precisely to your individual needs. From interior to exterior solutions, styling options, Volkswagen Genuine Accessories perfectly compliments your Amarok. For the full range, please visit www.volkswagen.com.au



01 Roof bars

Part.no VGA071126AM17 (Flush mount, load rating 100Kg)
Part.no VGA071126AM17C (Commercial, load rating 100Kg)



02 Amarok platform system

Part.no VGA2H6421AM17 (Load rating 75Kg)



03 Towbar

Part.no 2H6092134 (3.5 Tonne towbar for Amarok V6 auto only - MY18 onwards)



04 Premium roll Cover

Part.no 2H7071774GNP1 (W580 model)
 Part.no 2H7071774ENP1 (W580S model)
 Part.no VGACCVW80B02 (Roof racks to suit W580 roll cover)
 Part.no VWCCF090B02 (Roof racks to suit W580S roll cover)



05 Amarok E-Cover (Electric) Only in conjunction with the W580S Model

Part.no. 2H7071774J



08 Amarok alloy tray range



09 Amarok self-lowering tailgate system

Part.no VGA2H00ED0800 (with torsion bar)
 Part.no VGA2H00ED0300 (without torsion bar)



06 Premium canopy



07 Standard canopy



10 Slimline weathershields (tinted)

Part.no VGA845015S



11 Amarok electronic trailer brake controller kit

Part.no VGA2HETBAMK

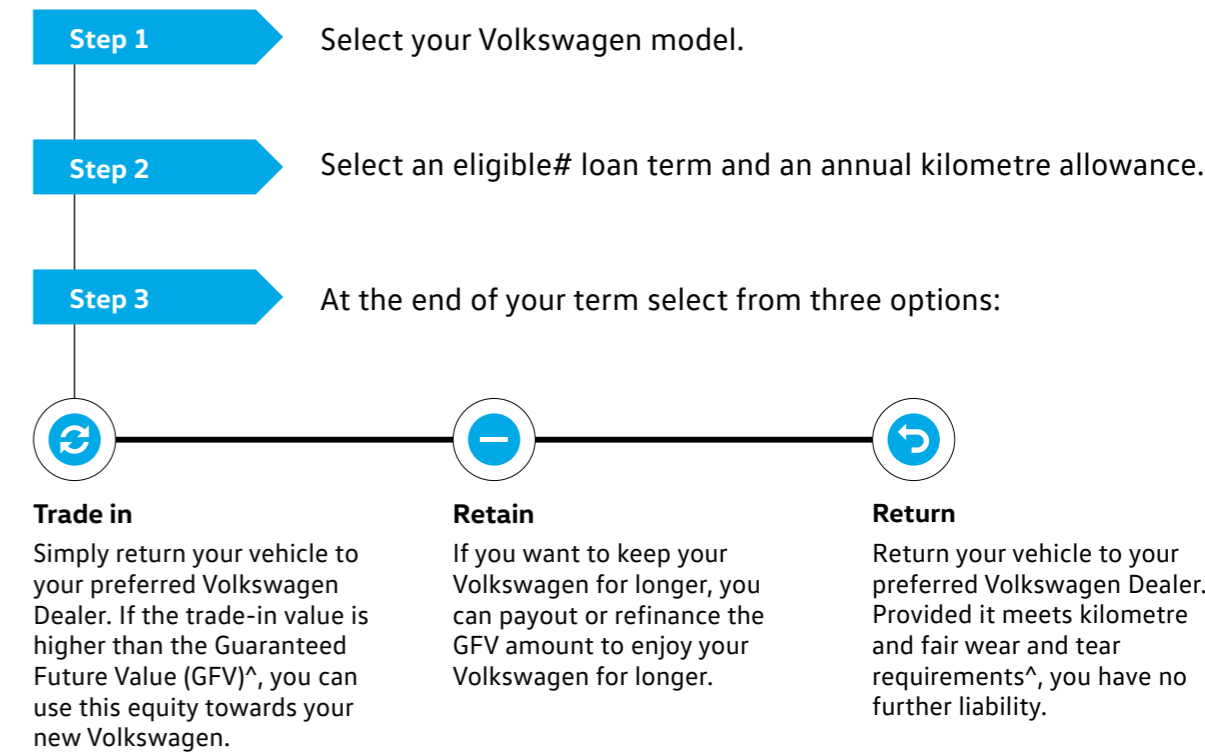


Volkswagen Choice[^]

Guarantee the minimum future value of your Volkswagen

Naturally we understand that your Volkswagen represents a valuable investment, so we understand that you want to maintain it in premium condition. Volkswagen Choice[^] is a finance program tailored to the requirements of Volkswagen owners by providing assurance around your Volkswagen's future value[^], whilst offering simple monthly instalment financing options.

Whether you are selecting your new Volkswagen for business or personal use, you can choose the contract term that best suits your requirements. Enjoy the confidence that comes from having locked in a minimum value up front to be attributed to your vehicle at the end of your contract[^]. There are also no account keeping fees with a fixed interest rate.



5 years Unlimited Kilometre Warranty

At Volkswagen, we pride ourselves on the highest quality standards that come with German engineering.

We back this commitment with a 5 year unlimited kilometre warranty on all new Volkswagen vehicles¹.



1 year Roadside Assist

Every new Volkswagen comes with a 1 year Roadside Assist membership².

That's 24 hour roadside assistance, emergency accommodation, car rental and towing as well as property and other assistance, all included for added peace of mind.



Volkswagen Care Plans

Volkswagen Care Plans³ have you covered for your first 3 or 5 scheduled services, providing you savings off the total Assured Service Pricing RRP. It's convenient, hassle-free scheduled servicing easily available for purchase at your local Volkswagen Dealer.



Assured Service Pricing

Assured Service Pricing⁴ gives you the transparency of knowing how much your service will cost up front.

Our Volkswagen Dealers have access to the latest diagnostic equipment and tools. Plus, they use Volkswagen Genuine Parts[®] to ensure your Volkswagen stays a Volkswagen.

You're in safe hands at your Volkswagen Dealer when it comes to servicing.

1. Conditions and exclusions apply, see <https://www.volkswagen.com.au/en/owners-service/warranty.html>. Your rights under this warranty are provided in addition to, and in some cases overlap with, consumer guarantees under the Australian Consumer Law and do not limit or replace them.

2. Volkswagen Roadside Assist membership is provided by AWP Australia Pty Ltd ABN 52 097 227 177 trading as Allianz Global Assistance. Whenever you request roadside vehicle assistance under your membership, you will be making that request to Allianz Global Assistance, who will provide the services under an arrangement with Volkswagen Group Australia Pty Limited ABN 14 093 117 876. The terms and conditions contain exclusions and limitations, please visit <https://www.volkswagen.com.au/en/owners-service/roadside-assist.html>.

3. Volkswagen Care Plans are available for purchase at <https://www.volkswagen.com.au/en/owners-service/care-plans.html> or from participating authorised Volkswagen Dealers for Eligible Vehicles and covers standard items as contained in each scheduled service interval only. The service intervals occur every 15,000 KM/12 months (whichever occurs first) for all models except MY18 to current Crafter vehicles and MY21 onwards Amarok vehicles, which are scheduled to occur every 20,000 km/12 months (whichever occurs first). These Care Plans can only be purchased prior to the first scheduled service and up to 22,500 km/15 months (whichever occurs first) for all models except MY18 to current Crafter vehicles and MY21 onwards Amarok vehicles which is 30,000 km/15 months (whichever occurs first). The timeframe takes effect from when the vehicle is first reported in our system as 'sold'. Discount structure varies by model. For details of what is not included in a scheduled service, please refer to the program terms and conditions.

4. Assured Service Pricing applies to the first 5 standard scheduled services of your vehicle which are scheduled to occur at every 15,000 km/12 month interval (whichever occurs first) or for MY18 to current Crafter vehicles and MY21 onwards Amarok vehicles only, 20,000kms/ 12 month interval (whoever occurs first). Volkswagen will publish the maximum price for a specified Scheduled Service on 1st February each year (or first business day after this date), and pricing will remain fixed for 12 months only. For more details on the Eligible Model's, pricing, items not included and for full terms and condition, please see <https://www.volkswagen.com.au/app/locals/service-pricing-guide>.

[^]Volkswagen Guaranteed Future Value consists of an option to return your vehicle to Volkswagen Financial Services (VFS) ABN 20 097 071 460, Australian Credit Licence 389344, at the end of the term and requires VFS to purchase the vehicle at an agreed price determined by VFS, known as the Guaranteed Future Value (GFV). #Eligible loan terms include 12-60 months, vary by model and are subject to change, ask dealer for more information. At the end of the term, you can elect to: (1) trade-in; (2) return; or (3) retain the vehicle by paying the GFV, which is a lump sum owed to VFS at the end of the loan term after all repayments have been made. You will be liable for any loan contract deficit and additional charges if you exceed the nominated kilometre allowance and/or the vehicle is not in an acceptable condition. Available on new and demonstrator Volkswagen vehicles for selected models. Contact your Official Volkswagen Dealer to verify eligible vehicles for this program. Fleet, government, rental buyers, hire car and chauffeur companies excluded.

The Amarok V6 W-Series

Volkswagen Group Australia Pty Ltd
24 Muir Road Chullora NSW 2190
ABN 14 093 117 876

April 2022
www.volkswagen.com.au

Publication: VWCAMARW580SPMY22

Your Volkswagen Dealer.

Important information

Apple CarPlay® registered trade mark of Apple Inc. Android Auto™ is a registered trade mark of Google Inc. Bluetooth® is a registered trade mark of Bluetooth SIG Inc.

Volkswagen is distributed by Volkswagen Group Australia Pty Ltd (ABN 14 093 117 876) of 24 Muir Road Chullora, NSW 2190. Specifications are as planned at April 2022, for Model Year 2022 and are subject to change without notice or obligation. All information in this brochure are correct at the time of publication, however variations may occur from time to time and Volkswagen, in so far as it is permitted by law to do so, shall not be liable in any way as a result of any reliance by any person on anything contained in this brochure. Authorised Volkswagen Dealers will provide up-to-date information on model application, design feature, prices, and availability on request.