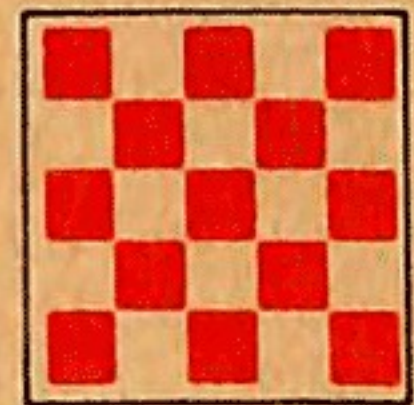
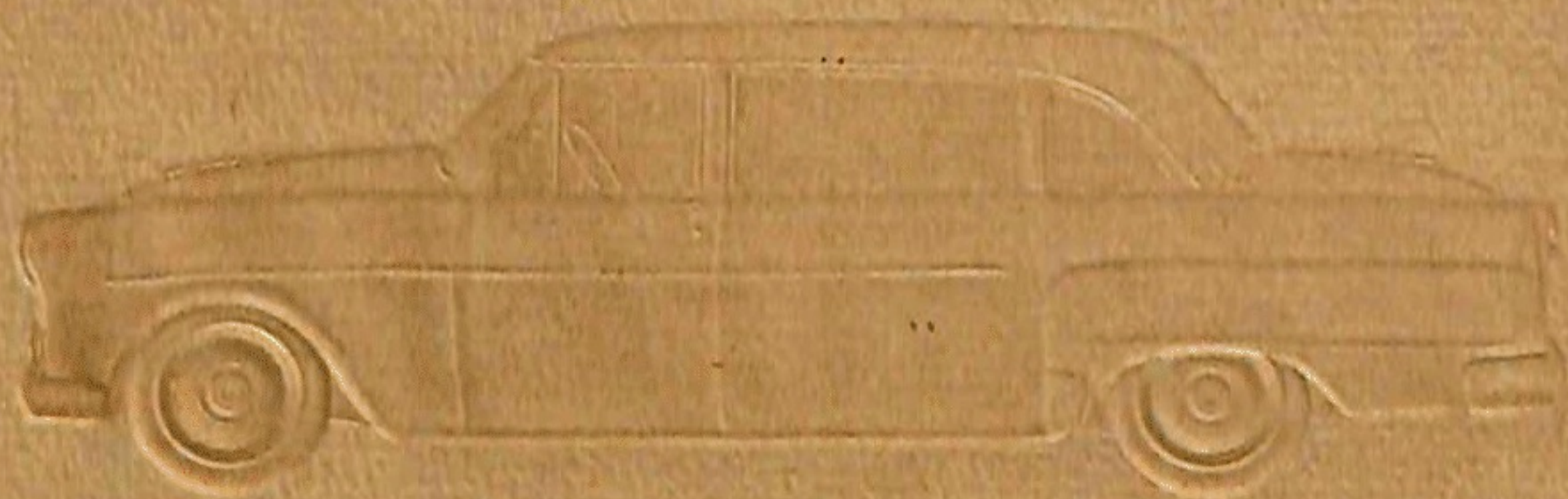
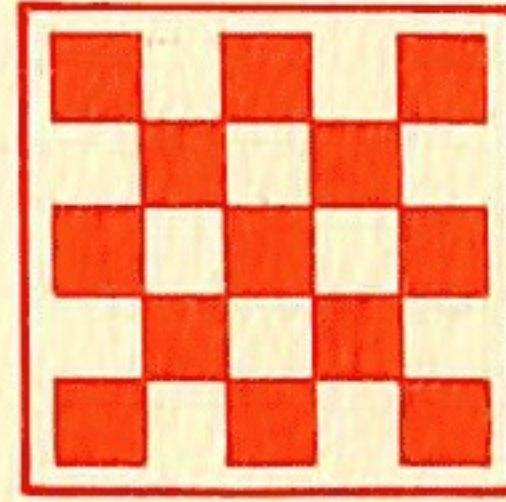




Town Custom Limousine







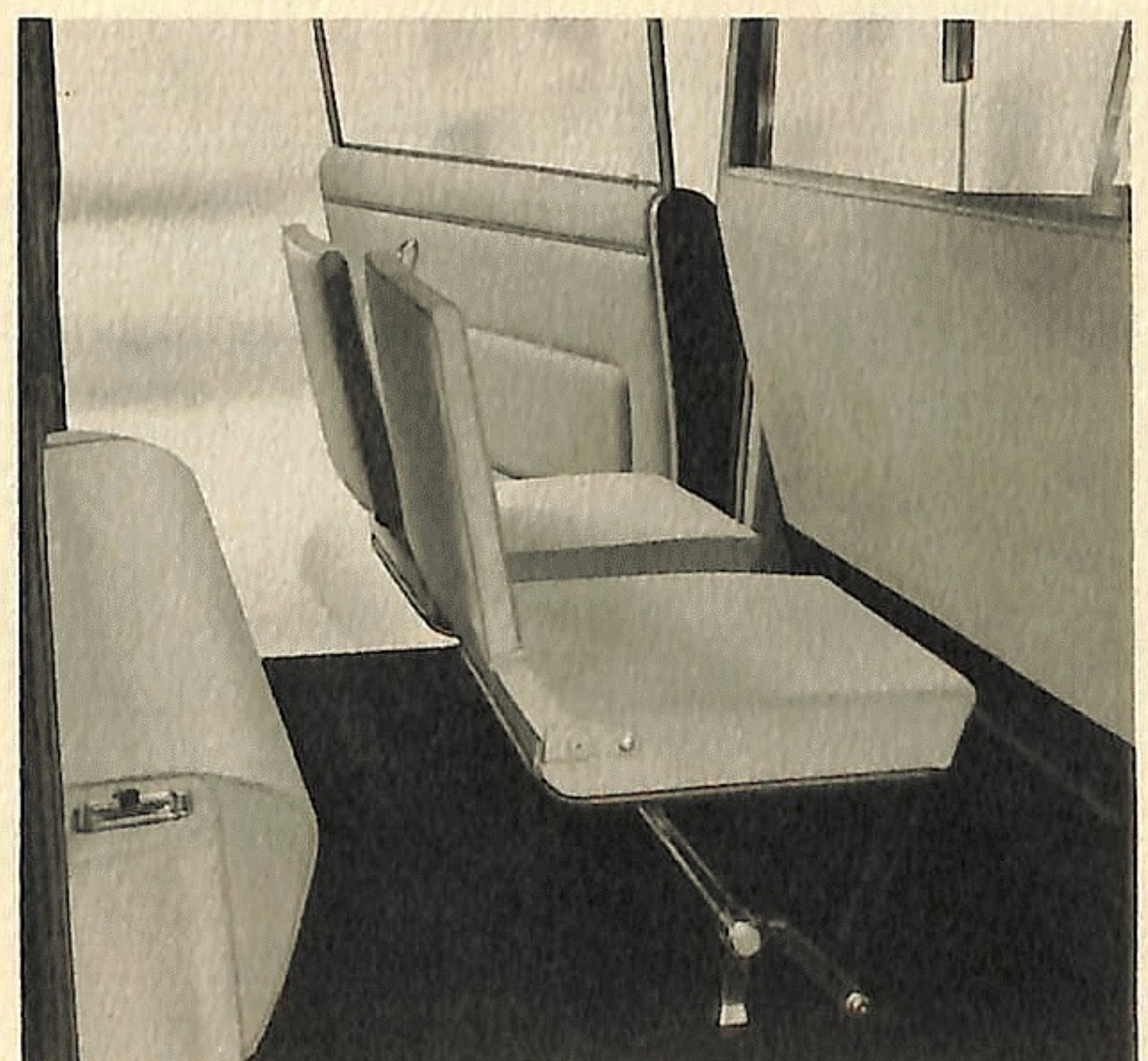
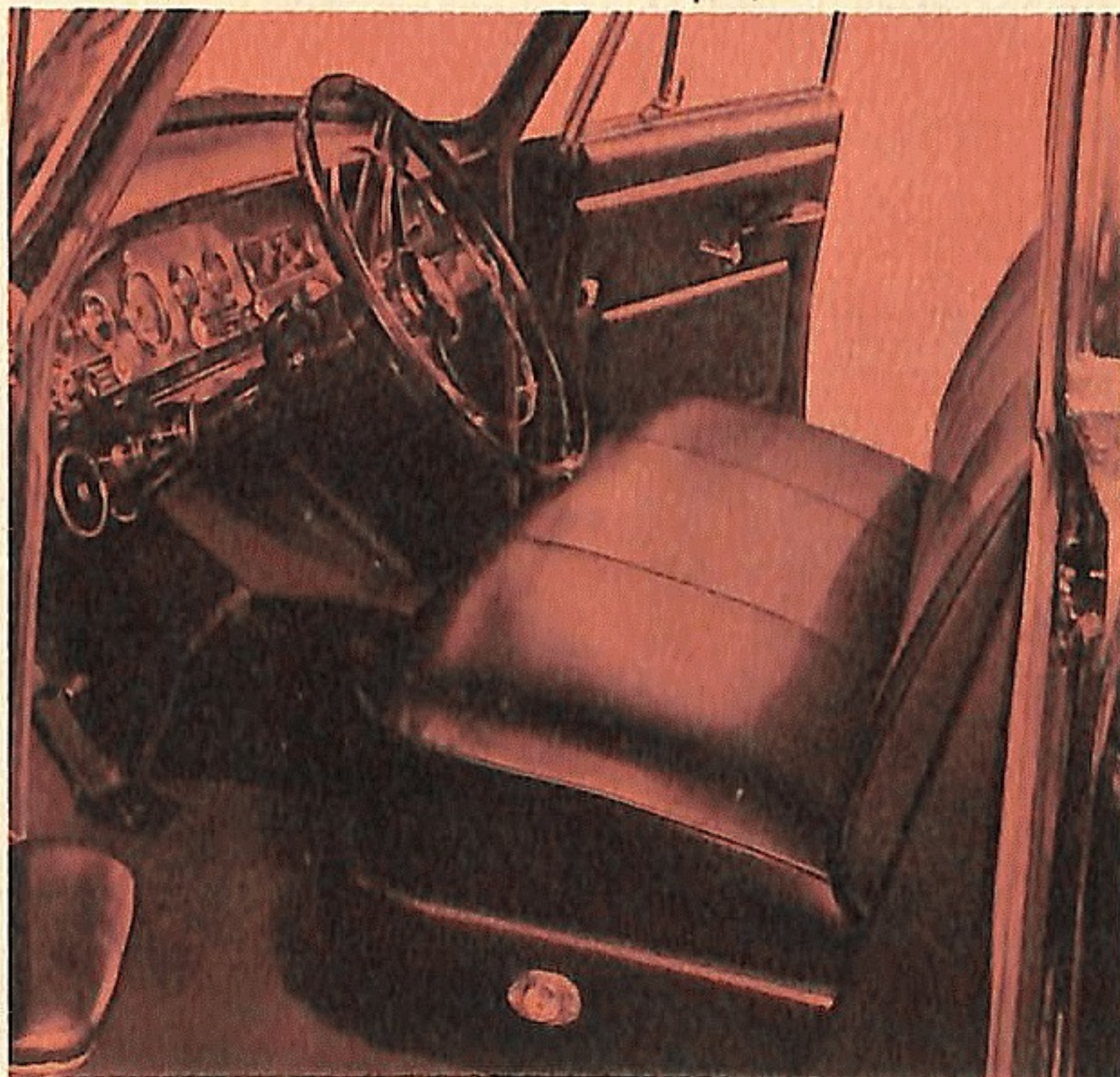
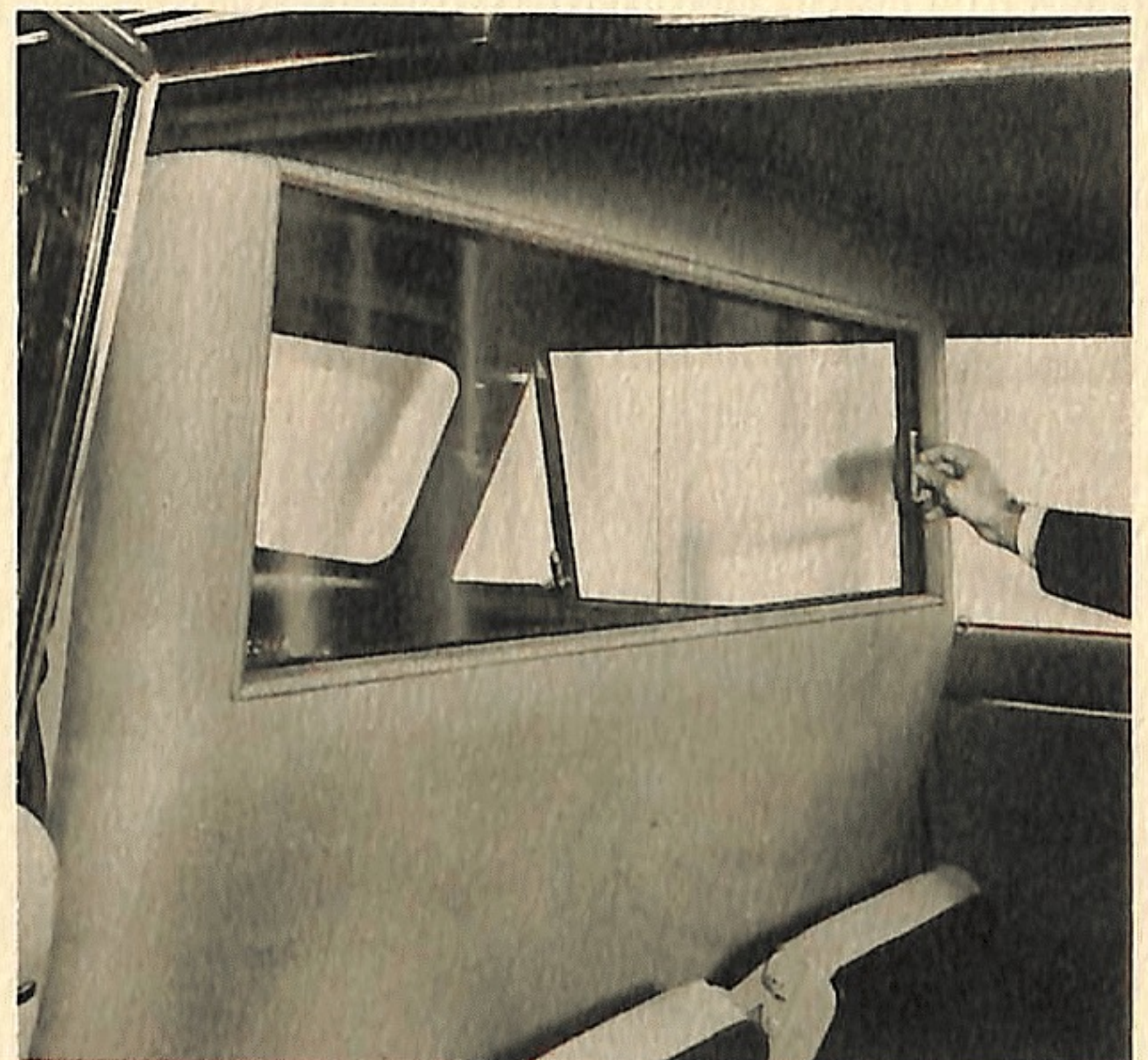
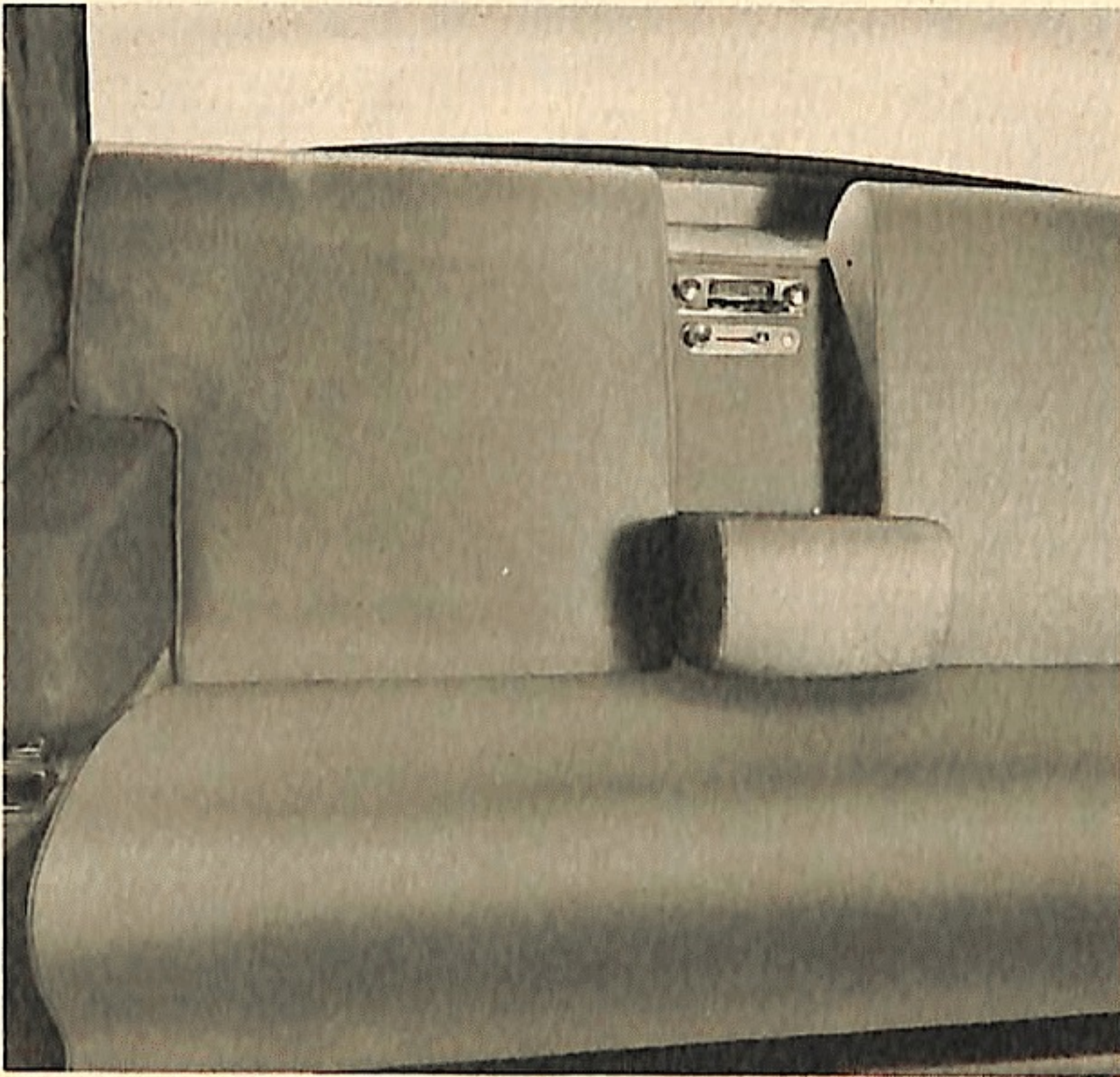
One of the world's finest motor cars

We take pleasure in introducing the Checker Town Custom Limousine; perhaps the most distinguished of all true limousines. Created in very limited quantities in Kalamazoo, Michigan, this car is built for those who take pleasure in the uncommon . . . for those who appreciate the cordiality of interior spaciousness, the excellence of fine custom appointments and the master craftsmen's ingenuity as reflected in unique auxiliary seats, space-saving flat floors and wider door openings. Combining the new 129-inch wheelbase with the deep-rooted Checker tradition of dependability and performance, the Town Custom Limousine offers luxury and prestige . . . comfort and practicality . . . long life and noble, classic design. Today's Checker Town Custom Limousine is a most distinctive motor car; we invite your careful inspection.

every
inch
an
aristocrat...

The Checker Town Custom Limousine offers a wealth of riding and driving features for your lasting satisfaction and motoring pleasure. They are evident in the vast interior roominess and greater stability born of the regal 129-inch wheelbase . . . in the inherent safety and complete comfort resulting from the exclusive Double Channel X-Brace Frame, heart of Checker's built-to-last construction . . . and in the graceful lines and uncomplicated ease of handling. Obviously, the Town Custom Limousine can be made only in limited numbers . . . and only for those particular people who consider quality, comfort and dependability of primary importance. If you are one of those people, you have an obligation to see for yourself why the Checker Town Custom Limousine is one of the finest motor cars in the world.

For stately interior luxury, fine nylon yarns are woven into a rich, deep grey upholstery fabric and combined with soft, sculptured foam rubber and full coil springs. Radio controls and rear compartment heating and air conditioning controls are located above the center armrest. ■ The safety-padded instrument panel incorporates classically designed direct reading, fluorescent-treated, circular gauges. ■ Two or three additional people can ride in complete comfort on wider, luxurious auxiliary seats that fold discreetly away when not in use. Magnificent deep pile color-coordinated carpeting adds to the elegant interior of the Checker Town Custom Limousine. ■ Optional driver's partition provides additional privacy for passengers, and is handsomely finished in matching deep grey soil-resistant upholstery fabric. ■ Driver sits on an exceptionally comfortable vinyl covered seat.





standard equipment

HEATER-DEFROSTER, part of Checker's all-season heating and ventilating system. Exceptionally quiet and easy to control, the heater provides abundant warm air to both front and rear compartments.

POWER STEERING provides effortless ease in parking, maneuvering in traffic and highway travel.

POWER BRAKES enable the driver to bring the car to quick, safe stops with the most gentle foot pressure.

OVERHEAD VALVE ENGINE meets all requirements for power and surge and still maintains fuel economy. This is the same engine that has been proven in billions of fleet miles all over the world.

OPTIONAL POWER AND CONVENIENCE ACCESSORIES

POWER WINDOWS are quickly and easily raised or lowered at the touch of the controls.

POWER SEATS with 4-way front seat adjustment provide extra driver comfort at the flick of the lever.

DUAL RANGE AUTOMATIC TRANSMISSION provides maximum power, efficiency and smooth response as it automatically shifts gears for the driver.

AIR CONDITIONING comfortably cools and filters all the air. Quickly cools, ventilates, dehumidifies and removes dust, dirt and pollen in both driver and passenger areas.

SEPARATE UNDER SEAT HEATER provides additional heat in rear compartment. Controls located above center armrest.

AUXILIARY SEATS enable two additional people to ride in complete comfort. Newly designed, wider seats face forward, yet provide adequate legroom for all passengers.

PARTITION discreetly separates front and rear compartments, providing complete privacy for passengers, less distraction for driver.

UNDERCOATING. A complete and thorough factory undercoating protects undercarriage from road dirt and acts as sound deadener.



OTHER CONVENIENCE AND SAFETY ACCESSORIES:

- Rear radio and antenna; positioned behind center armrest
- Tinted glass all around
- Panel electric clock
- Back-Up lights
- Parking brake signal
- Outside mirror
- Windshield washer
- Deluxe chrome wheel covers
- Oil filter
- 4 ply white wall tires

SPECIFICATIONS

in inches unless otherwise indicated

BODY

WHEELBASE	129
OVERALL LENGTH	211
OVERALL WIDTH	76
OVERALL HEIGHT	62 $\frac{3}{4}$
SHIPPING WEIGHT	3765
FRONT HEADROOM	36
BOTTOM OF DOORS TO GROUND (LOADED)	11.75
RAMP BREAKOVER ANGLE	16°
ANGLE OF APPROACH	23°
ANGLE OF DEPARTURE	15°
MINIMUM ROAD CLEARANCE AT REAR AXLE	7.50 at diff.
LEGROOM, FRONT	42
LEGROOM, REAR	57
FRONT SEAT HEIGHT	14
REAR SEAT HEIGHT	13
AUXILIARY SEAT HEIGHT	13
OVERHANG, FRONT	32.75
OVERHANG, REAR	46.75
FRONT HIP ROOM	62.25
REAR HIP ROOM	50.50
WINDSHIELD WIDTH	58.0
BACK WINDOW WIDTH	58.87

ENGINE

TYPE Continental, 6 cylinder Overhead Valve

HORSEPOWER 141 BHP @ 4400 rpm

COMPRESSION RATIO 8 to 1

PISTON DISPLACEMENT 226 cu. in.

PISTONS Anodized aluminum alloy

*CARBURETOR 1 $\frac{1}{4}$ " downdraft,
with automatic choke*

FUEL CAPACITY 23 gallons

RECOMMENDED FUEL Regular

COOLING SYSTEM 13 qts. with heater

*TORQUE (LB FT @ RPM)
205 lb ft @ 2000 rpm*

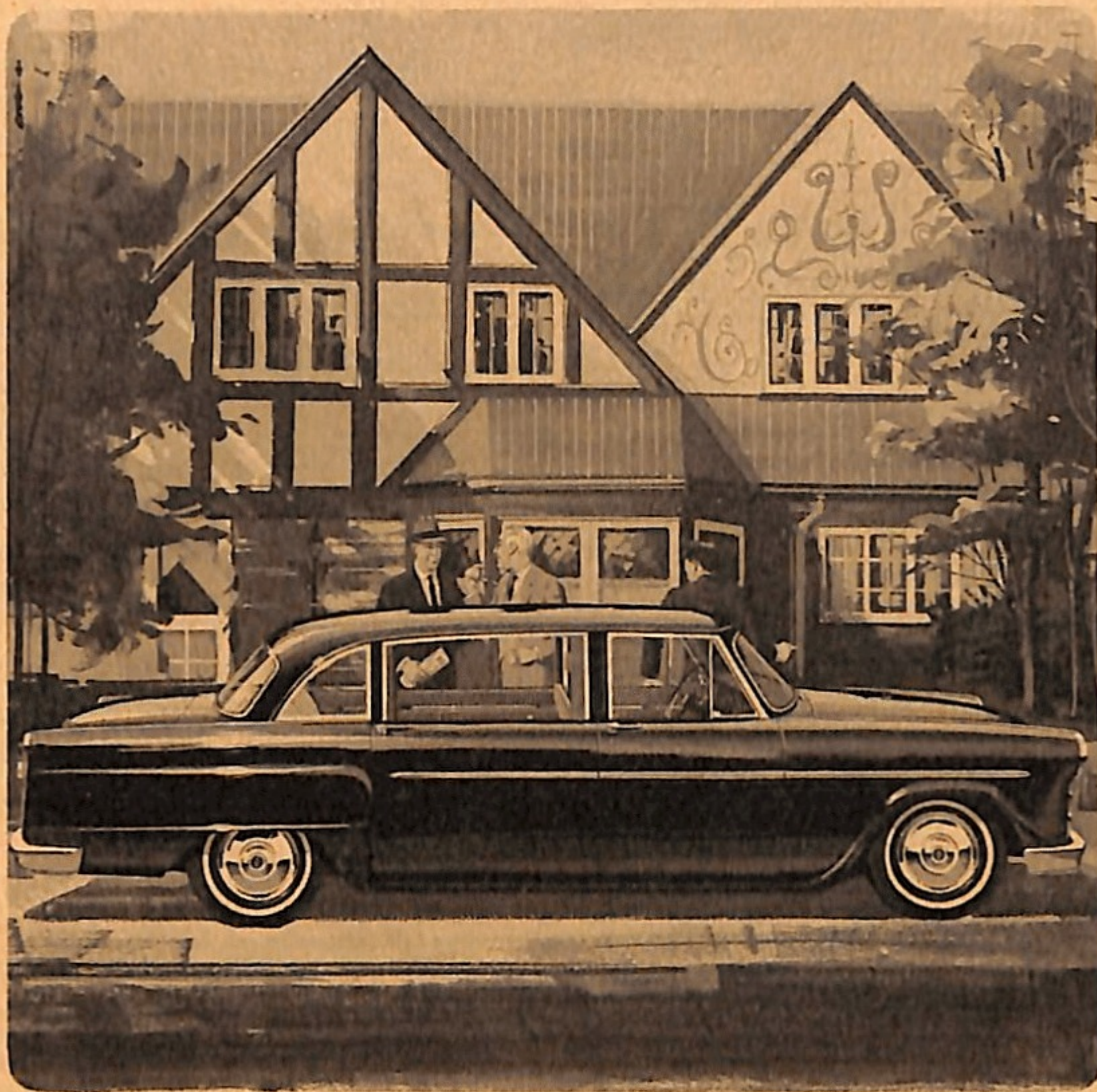
FIRING ORDER 1-5-3-6-2-4

*RECOMMENDED IDLE SPEED (NEUTRAL)
375 rpm, manual; 425 rpm automatic*

CHECKER MOTORS CORP.

KALAMAZOO, MICHIGAN, U.S.A.





Checker Motors Corp.

KALAMAZOO, MICHIGAN, U.S.A.