

FIREFLY 2000

FIREFLY

2000

PONTIAC



# 2000 PONTIAC FIREFLY

You don't need a big, showy and expensive car to make a statement. You just need to know exactly who you are and choose a car that reflects your personality. Enter Pontiac Firefly. It does its own thing so you can do yours. And it does all you ask of it effortlessly, safely, dependably and with *flair*. That makes quite a statement about the way this car is built. It makes just as strong a statement about you.

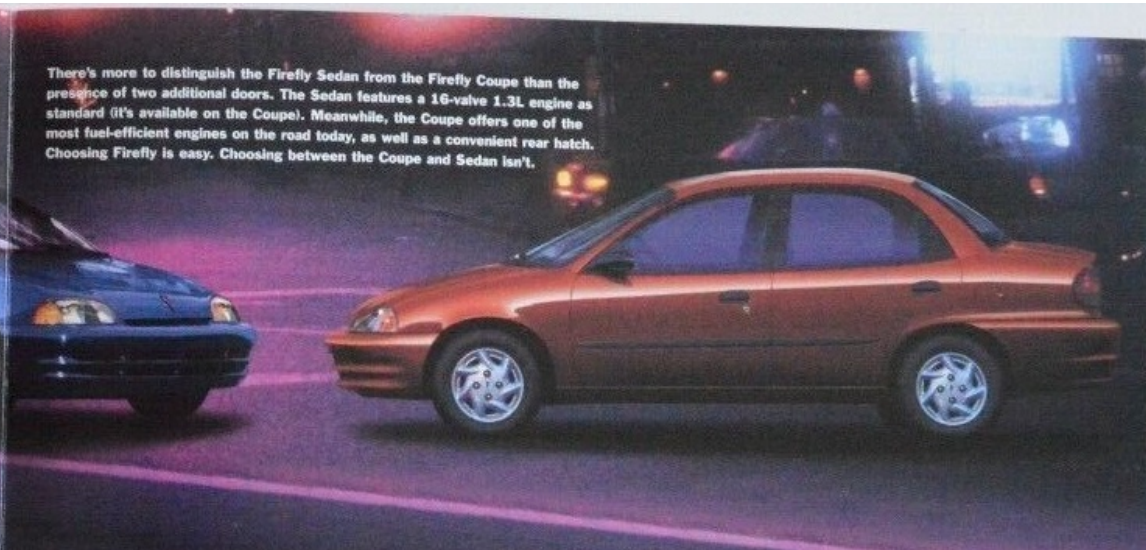
Find information about the Pontiac Firefly at: [www.gmcanada.com](http://www.gmcanada.com)\*



Firefly Sedan's standard split-folding rear seatback gives you the flexibility of folding down half the rear seatback - or all of it - to accommodate oversized items.



Firefly's reclining high-back front bucket seats don't just look sporty, they offer impressive comfort. You'll also be a little wowed by the sense of roominess in this interior.



There's more to distinguish the Firefly Sedan from the Firefly Coupe than the presence of two additional doors. The Sedan features a 16-valve 1.3L engine as standard (it's available on the Coupe). Meanwhile, the Coupe offers one of the most fuel-efficient engines on the road today, as well as a convenient rear hatch. Choosing Firefly is easy. Choosing between the Coupe and Sedan isn't.

There are plenty of practical reasons for choosing the Canadian-built Firefly. Here's an emotional one: from the feel of the steering wheel to the standard tachometer, this is a small car that is big on driving pleasure.



# 2000 PONTIAC FIREFLY

SAFETY AND SECURITY	COUPE	SEDAN
<b>Air bags</b> – driver and front passenger, frontal, Next Generation	S	S
<b>Brakes</b> – 4-wheel, anti-lock braking system (ABS)	0	0
<b>Brake/transmission shift interlock</b> (automatic transmission only)	S	S
<b>Door locks</b> – rear door, child-security	–	S
<b>Headlights</b> – Daytime Running Lights with instrument panel indicator	S	S
<b>Tether anchors</b> – child-seat	S	S

MECHANICAL	COUPE	SEDAN
<b>Battery</b> – Delco Freedom II	S	S
<b>Brakes</b> – power, front disc/rear drum	S	S
<b>Drive</b> – front-wheel	S	S
<b>Engine</b> – 1.0 litre L3 with TBI Horsepower – 55 @ 5700 rpm, Torque – 58 lb.-ft. @ 3300 rpm	S	–
<b>Engine</b> – 1.3 litre 16-valve L4 with MFI Horsepower – 79 @ 6000 rpm, Torque – 75 lb.-ft. @ 3000 rpm	0	S
<b>Exhaust system</b> – stainless steel*	S	S
<b>Steering</b> – rack-and-pinion	S	S
<b>Steering</b> – power, rack-and-pinion	–	0
<b>Suspension</b> – 4-wheel independent	S	S
<b>Transmission</b> – 5-speed manual with overdrive	S	S
<b>Transmission</b> – 3-speed automatic	0†	0

\* Muffler and tailpipe only. † Requires 1.3L 16-valve L4 engine.

EXTERIOR	COUPE	SEDAN
<b>Bumpers</b> – painted body-colour	S	S
<b>Glass</b> – tinted	S	S
<b>Headlights</b> – composite halogen (flash-to-pass)	S	S
<b>Mirrors</b> – dual, left and right remote	S	S
<b>Mouldings</b> – bodyside, Graphite Gray	S	S
<b>Tires</b> – P155/80R13 all-season blackwall	S	S
<b>Wheels</b> – 13" x 4.5" steel with full wheel covers, 3-spoke (A)	S	–
<b>Wheels</b> – 13" x 4.5" steel with full wheel covers, 7-spoke (B)	–	S
<b>Windshield wipers</b> – 2-speed with fixed delay	S	S
<b>Wiper/washer</b> – rear window	S	–

SOUND SYSTEMS	COUPE	SEDAN
All Firefly sound systems include an electronically tuned Delco AM/FM stereo with seek up/down, digital clock and 4-speaker sound system		
Radio Prep Package – includes antenna and 4-speaker system	S	S
AM/FM stereo, Auto Tone Control and cassette tape player	0	0
AM/FM stereo, Auto Tone Control and CD player	0	0

TOWING
Trailer towing is not recommended with Firefly.

## EXTERIOR COLOURS

16 – White	17 – Silver Metallic	19 – Black Licorice	29 – Medium Blue Metallic
35 – Medium Green Metallic	47 – Dark Blue Metallic	53 – Sunset Red Metallic	74 – Wildfire Red

## INTERIOR FABRICS



## WHEEL EQUIPMENT

- A – 3-Spoke wheel cover  
B – 7-Spoke wheel cover



INTERIOR	COUPE	SEDAN
<b>Air conditioning</b> – manual (with CFC-free refrigerant)	0	0
<b>Console</b> – front floor with storage tray	S	S
<b>Cupholders</b> – pull out, dual centre console	S	S
<b>Defogger</b> – electric rear window	S	S
<b>Door locks</b> – power	–	0
<b>Floor mats</b> – front and rear, carpeted	S	S
<b>Head restraints</b> – front seat, integral	S	S
<b>Instrumentation</b> – analogue cluster (includes speedometer, coolant temperature and fuel gauges)	S	S
<b>Instrumentation</b> – tachometer and trip odometer	S	S
<b>Light</b> – trunk	–	S
<b>Map pockets</b> – front door	S	S
<b>Seat</b> – front passenger "easy entry" feature	S	–
<b>Seats</b> – cloth high-back reclining bucket seats	S	–
<b>Seats</b> – uplevel cloth high-back reclining bucket seats	–	S
<b>Seats</b> – full-folding rear seatback	S	–
<b>Seats</b> – rear, split-folding with pass-through	–	S
<b>Security cover</b> – cargo	S	–
<b>Trunk</b> – release, remote	–	S

EXTERIOR, MM (IN.)	COUPE	SEDAN
Wheelbase	2365 (93.1)	2365 (93.1)
Length	3795 (149.4)	4165 (164.0)
Width	1590 (62.6)	1590 (62.6)
Height	1390 (54.7)	1407 (55.4)
Front tread	1385 (54.5)	1385 (54.5)
Rear tread	1360 (53.5)	1360 (53.5)

INTERIOR, MM (IN.)	FRONT/REAR
Head room	993/915 (39.1/36.0) 999/948 (39.3/37.3)
Leg room	1079/819 (42.5/32.2) 1079/819 (42.5/32.2)
Shoulder room	1242/1242 (48.9/48.9) 1245/1227 (49.0/48.3)
Hip room	1199/1115 (47.2/43.9) 1205/1090 (47.4/42.9)

CAPACITIES/WEIGHT		
Luggage, L (cu. ft.)		
– rear seat up,	238 (8.4)	292 (10.3)
– rear seat down,	636 (22.5)	NA
Fuel tank, L (gal.)	39 (8.6)	39 (8.6)
Curb weight (est.), kg (lb.)	825 (1818)	900 (1985)

### A Word About This Brochure

Some of the equipment shown or described throughout this brochure may be available at extra cost. This brochure is based on the latest information at the time of printing. General Motors of Canada Limited reserves the right to make changes at any time, without notice, to specifications, equipment, colours, models, availability, programs and services. Your Pontiac dealer is the best source for up-to-date information. General Motors reserves the right to lengthen or shorten the model year for any product, for any reason, or to start and end model years at different times.

### A Word About Assembly

Pontiacs are equipped with engines and components produced and assembled by different operating units of General Motors, its subsidiaries and suppliers and these engines and components may change or be obtained from different sources from time to time. All such engines and components are approved for use in Pontiacs.

Certain equipment ordered may be unavailable at the time of assembly and we suggest that you verify that your vehicle includes the equipment you ordered, or if there are changes, that they are acceptable to you.

General Motors, GM, the GM emblem, the GM Canada Web site address, Pontiac, the Pontiac emblem, Firefly, Freedom, SmartLease and the TOTAL Warranty are all trade marks of the General Motors Corporation and/or General Motors of Canada Limited.

Printed in Canada, August 1999.

© Copyright 1999 General Motors of Canada Limited