

This brochure has been compiled by DaimlerChrysler AG of Germany and is distributed internationally. It provides a general indication of the range of models, features, optional extras and/or colours available in various countries. Some of the models, features, optional extras and/or colours shown may not be available in your country or may only be available in a different specification. Additionally some models, features, optional extras and/or colours may only be available in combination with others. For current and more specific information in relation to the range of models, features, optional extras and/or colours available in your country, and their pricing, you should contact your nearest authorised Mercedes-Benz Passenger Car Dealer.



Mercedes-Benz



THE NEW GENERATION OF THE E-CLASS



Mercedes-Benz

CONTENTS

INTRODUCTION			
The new generation of the E-Class	01		
<hr/>			
SAFETY			
PRO-SAFE™	04		
<hr/>			
COMFORT			
Interior	08		
Suspension	10		
Estate	12		
<hr/>			
DYNAMISM			
Diesel engines	14		
Petrol engines	16		
<hr/>			
AMG	18		
<hr/>			
EQUIPMENT LINES			
CLASSIC	20		
ELEGANCE	22		
AVANTGARDE	24		
<hr/>			
EQUIPMENT			
Standard equipment		28	
Optional extras		29	
Light-alloy wheels		30	
<hr/>			
designo		32	
<hr/>			
COLOURS AND MATERIALS			
Paintwork		34	
Upholstery and leather		36	
Wood		38	
Combination options		39	
<hr/>			
TECHNICAL DATA			
Saloon		40	
Estate		44	

Summing up Mercedes-Benz in one letter

The new generation of the E-Class: epitomising what makes a Mercedes

For over 60 years now, the letter E has been synonymous with comfort, safety and elegance. It's a tradition which the new generation of the E-Class is proud to continue. The driving experience is as sublime as it always has been, but more dynamic than ever – with more powerful engines and with the agility package, which offers more direct steering, faster and more precise gearshifts and – for models with steel suspension – new suspension tuning. All of which makes the E-Class even more of a joy to drive, while preserving its legendary comfort.

On top of this, there are new design elements and colour variants, inside and out. And for even more safety, you'll now find PRE-SAFE®, the preventive safety system, on board.

The new optional Intelligent Light System is a literal highlight. Based on the bi-xenon headlamps with Active Light System, the dipped-beam lights automatically adapt to the given traffic situation. The system ensures broader illumination of the carriageway on rural roads and twice as long a headlamp range on motorways.



S 0G 6604



We've been shaping the future of safety for the past 60 years

PRO-SAFE™ – Mercedes-Benz's 5-P safety philosophy

It all started with an unseen revolution. Several decades ago, when Mercedes-Benz presented the first production car with passive safety features, the innovations on board – the safety cell with crumple zones – were invisible to the observer.

Since then Mercedes-Benz has time and again proved a pioneer in the field of safety. In 1978 it was a Mercedes-Benz that helped put ABS on the map, and just three years later airbags and belt tensioners made their debut in a series-produced vehicle. The list goes on – from the introduction of ESP® to PRE-SAFE®.

Throughout, Mercedes-Benz has doggedly been pursuing one goal: the vision of accident-free driving. It will be a while before this vision becomes reality, but with PRO-SAFE™ the goal has moved a step closer to fulfilment.

Rather than dividing safety into individual active and passive safety systems, PRO-SAFE™ embodies Mercedes-Benz's pioneering, all-embracing safety philosophy. Our approach to safety at Mercedes-Benz doesn't just extend from ABS to ESP® – it extends from A to Z.

The standard of comfort on board makes the driver's job easier, while assistance systems permanently monitor the driving situation. If certain dangers arise, the driver can be warned and supported. As a precaution, reversible protective measures can take effect, providing the required protection for the occupants in the event of an accident. And the protection offered by PRO-SAFE™ doesn't stop once an accident occurs. Specific measures can help prevent anything worse from happening, reducing, for example, the likelihood of follow-on accidents.

As you can see, at Mercedes-Benz we take a comprehensive, joined-up approach to safety. And this approach forms the heart of PRO-SAFE™ – the first part of our five-point system.

Béla Barényi – seen here with a safety prototype – is the acknowledged father of passive safety engineering. His name appears on the Mercedes-Benz patents for the safety passenger cell with crumple zones and the safety steering column





17 3 59

A comprehensive approach to safety

PRO-SAFE™ in detail: PERFORM-SAFE, PRE-SAFE®, PASSIVE-SAFE and POST-SAFE

PERFORM-SAFE encompasses measures which can contribute to safety when driving: comfort features which reduce driver stress, for example, or the control and display concept which minimises distractions that might divert the driver's attention from what is happening on the road. Then there are systems which assist the driver, providing support in critical on-road situations and alerting the driver to potential hazards. These include the Electronic Stability Program (ESP®) and the ADAPTIVE BRAKE system. The latter includes an adaptive brake light which alerts following traffic to emergency braking by flashing on deceleration and activates the hazard warning lights when the vehicle comes to a standstill. This links seamlessly into the next part of the 5-point safety philosophy.

PRE-SAFE® is the next logical step: it includes systems which are able to anticipate hazards and take precautionary measures to provide an even higher level of occupant safety if an accident should ensue. The functions provided by PRE-SAFE® include reversible belt tensioners and automatic closure of the optional tilting/sliding sunroof.

PASSIVE-SAFE is all about providing the best possible protection for the occupants in the event of an accident. It offers protection both for your own vehicle – with, for example, a high-strength safety cell and systems such as adaptive airbags, windowbags and the crash-responsive NECK-PRO head restraints for the driver and front passenger seats – and for other road users – thanks to features such as the smooth bodywork and the controlled yielding of the bumpers.

POST-SAFE includes measures which help to prevent the situation from deteriorating after an accident: the fuel tank, for example, is situated in the protected area in front of the rear axle and the engine and fuel supply are automatically switched off after a serious collision. To prevent follow-on accidents and make it easier to locate the vehicle concerned, the hazard warning lights are activated automatically. Doors which unlock automatically and are easy to open mean that occupants can be rescued more quickly after an accident. Another safety measure provided by Mercedes-Benz is the multi-language rescue manual which is available on the internet to rescue services worldwide.

You can download further information about safety at www.mercedes-benz.com/airbag-brochure

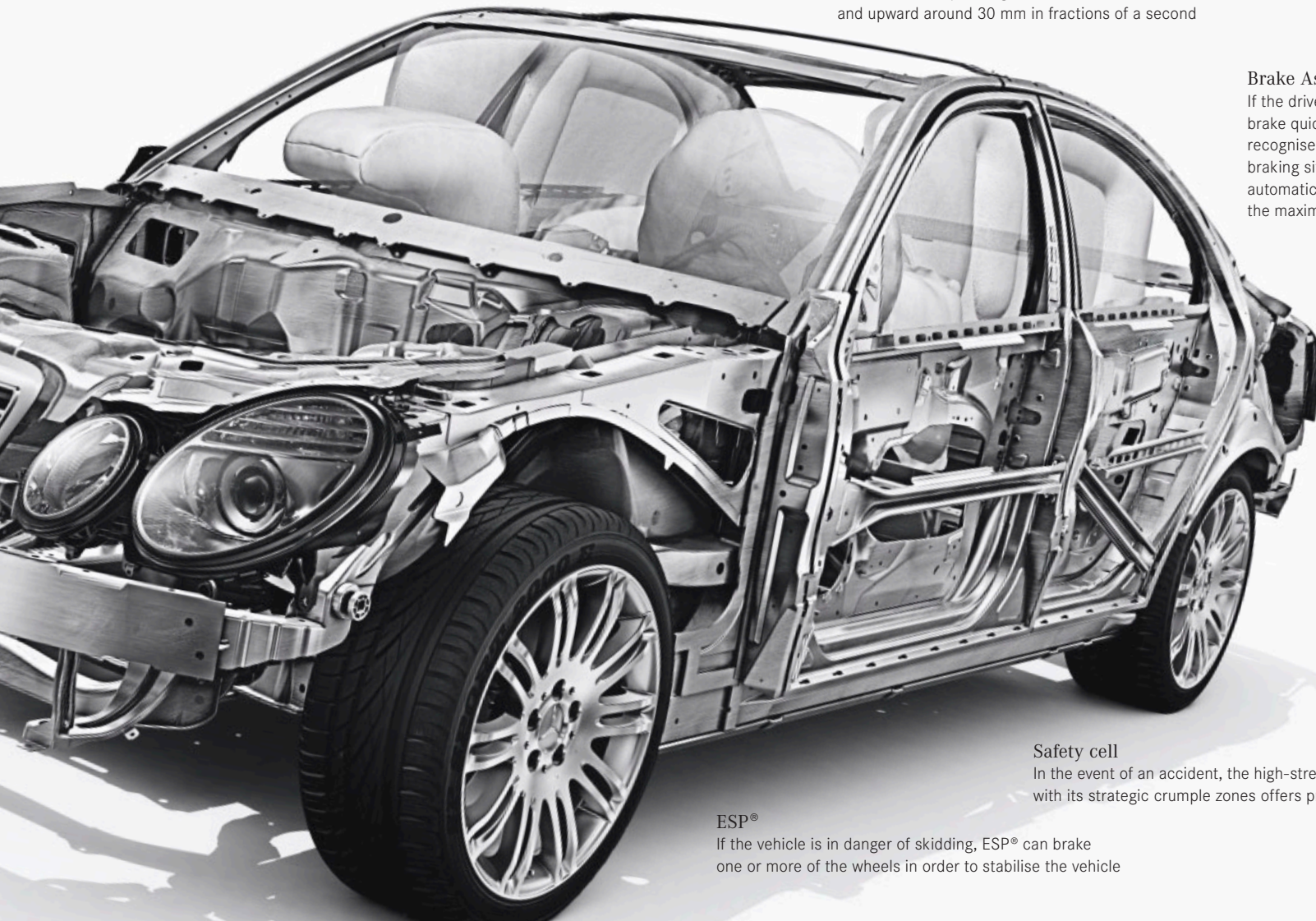
Intelligent Light System

The dipped lights automatically adapt to the traffic situation. The parking light has also been optimised using LED technology



DISTRONIC

Proximity control helps you to keep the required distance from the vehicle in front in the 30 km/h to 180 km/h speed range



NECK-PRO

In the event of a rear-end collision of a specific severity, prestressed springs push the head restraints on the driver and front passenger seats forward around 40 mm and upward around 30 mm in fractions of a second

Brake Assist (BAS)

If the driver steps on the brake quickly, the system recognises an emergency braking situation and can automatically build up the maximum braking force

Safety cell

In the event of an accident, the high-strength passenger cell with its strategic crumple zones offers protection

ESP®

If the vehicle is in danger of skidding, ESP® can brake one or more of the wheels in order to stabilise the vehicle



Comfort made the E-Class what it is today. Or should that be the other way round?

The interior of the E-Class

Sit back and unwind. The E-Class has always been a car that makes you feel right at home. That's not about to change, but we have tweaked a few of the details which help produce that feeling. THERMATIC automatic climate control, for example, fitted as standard in the E-Class, ensures the perfect on-board climate. All you have to do is enter your preferred temperature. THERMOTRONIC luxury automatic climate control, which divides the interior of the E-Class into four separate climate zones, is also available as an option.

A comfortable seat position is just as important as a pleasant on-board temperature. As an option, luxury seats and multicontour seats are available for the driver and front passenger.

The dynamic multicontour seat is designed to make your journey even more enjoyable: on bends, the air pressure in the side bolsters automatically increases to provide extra support, and a massage function relaxes the muscles of the back at the touch of a button. Which means that, even on a long drive, you can sit back, relax and enjoy the journey. Especially if you're listening to your favourite music. The optional harman/kardon LOGIC 7® surround sound system delivers exceptional sound.

If you are looking for the complete entertainment package, the COMAND APS control and display unit is available as an option. It combines a radio, MP3 player and DVD navigation system and is also available with a TV function.





You could go a long way to find peace and quiet. But you don't have to

You'll barely hear the engines. And barely feel the road

Fine wood and sumptuous materials aren't the only factors which help create the exceptional comfort you'll experience in the E-Class. Air and light-alloy play their role too.

AIRMATIC DC semi-active air suspension, standard in the E 420 CDI, E 500, E 500 4MATIC and E 63 AMG and available as an option for all other models, keeps uneven road surfaces at bay. It is controlled electronically and, thanks to the Adaptive Damping System (ADS), it is a sure match for even the sportiest of driving styles. On bends, for example, side tilt is automatically reduced. And at the touch of a button, you can choose between AIRMATIC DC's basic modes: sports, sports comfort and comfort.

The silence of the E-Class is legendary. Credit for the low noise levels inside the car goes, in part, to the measures taken to encapsulate engine sound. This and further extensive sound-absorbing measures mean that, while you'll hear a lot about the E-Class, you won't hear a lot from the car itself.

The E-Class transmissions equal the engines in terms of comfort and dynamism. With the 7G-TRONIC 7-speed automatic transmission, standard in the E 320 CDI, E 420 CDI, E 350, E 500 and E 63 AMG and available as an option for the E 280 CDI and E 280, gear changes are barely perceptible. It constantly operates in the optimum engine speed range too – for a sublime driving experience at all times.

AIRMATIC DC

Instead of conventional coil springs, the semi-active air suspension features air springs. They are automatically adjusted for a harder or softer set-up, according to the situation



The E-Class – think big

The Estate: the perfect packaging for your luggage

A load capacity of up to 1950 litres doesn't really need further explanation. But size alone has never been enough for the E-Class Estate – which is why it features such intelligent solutions as the optional EASY-PACK system. The system includes a retaining net to separate off the load compartment plus a load compartment cover which moves upwards when the tailgate is opened, to make loading easier, and automatically returns to its original position when the tailgate is closed. The cover is designed to protect your luggage from the sun and from prying eyes.

Another EASY-PACK feature is the extending load compartment floor, which makes loading even easier. A touch of a button is all it takes and the load compartment floor extends hydraulically. Once you have finished loading, it glides back to its original position – again at the touch of a button. The sturdy panel can hold up to 200 kilograms.

To make sure that everything stays where you want it to stay, an EASY-PACK load-securing kit is available. It includes cargo rails, a telescopic bar and a retractable belt, all designed to secure a variety of objects in place.

The EASY-PACK load-securing kit is also available as an option for the Saloon.



Loading space

The load compartment floor extends hydraulically up to 60 cm beyond the vehicle's load sill



More power, less fuel

The CDI diesel engines

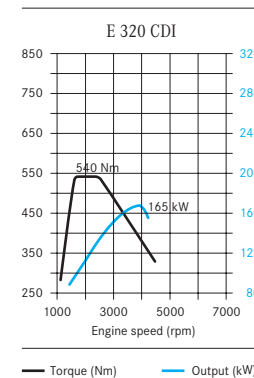
The 4-cylinder in-line CDI diesel engines in the E 200 CDI* and E 220 CDI offer power, a smooth ride and fuel efficiency. And with 100 kW (136 hp) and 340 Nm or 125 kW (170 hp) and 400 Nm, you can be sure that economical driving is highly enjoyable too. The smoothness of both engines can be attributed to the Lanchester balancer shaft and extensive damping.

In the E-Class common-rail diesel technology is also available with the comfort of six cylinders. The V-engine E 280 CDI and E 320 CDI, with 140 kW (190 hp) and 165 kW (224 hp) respectively, are also available as 4MATIC models with all-wheel drive.

The top-of-the-line diesel model is the E 420 CDI* which features one of the highest-torque V8 car diesel engines. The 231-kW (314-hp) power-plant delivers a maximum torque of 730 Nm at a mere 2200 rpm and accelerates the E 420 CDI from 0 to 100 km/h in just 6.1 seconds.

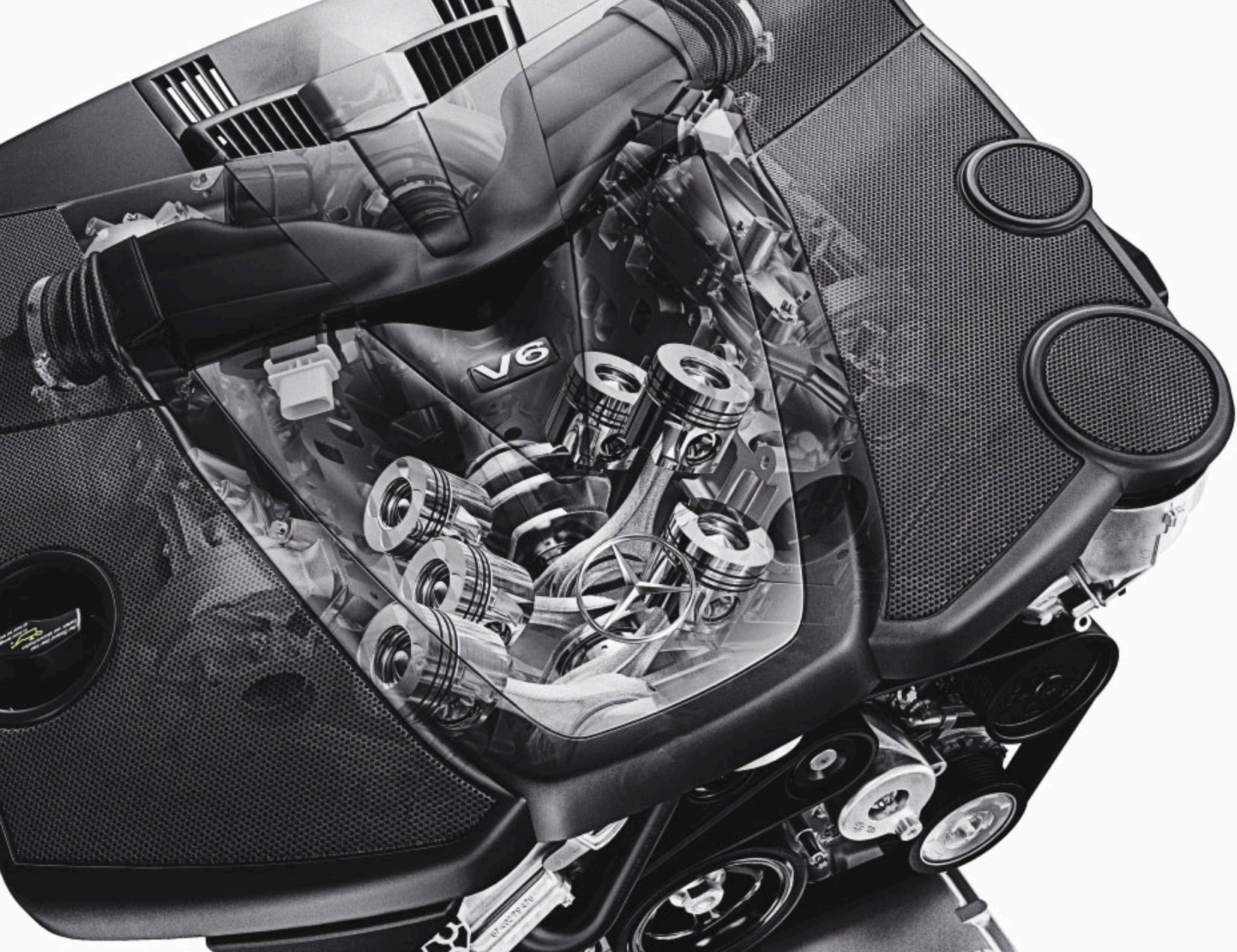
A particulate filter is standard for all diesel models, helping to minimise particulate emissions.

*The E 200 CDI and the E 420 CDI are not available as Estates



E 320 CDI
The performance curve of the E 320 CDI – an example of cutting-edge diesel technology





Performance art at its finest

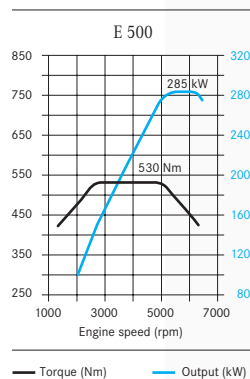
The petrol engines

We go to extraordinary lengths to produce the special driving experience offered by the E-Class. The 4-cylinder, in-line supercharged engine in the E 200 K makes a powerful starting point – with an output of 135 kW (184 hp).

An extensive technology package is also the secret behind the 6-cylinder V-engines in the E 280 and E 350. All four camshafts, for example, feature variable adjustment across the entire engine speed range – ensuring that high torque is available from the low engine speed range. Optimum fuel combustion also results in low consumption, while a balancer shaft ensures smooth operation. For an even smoother drive, particularly where road conditions are poor, both models are also available as 4MATIC versions with all-wheel drive.

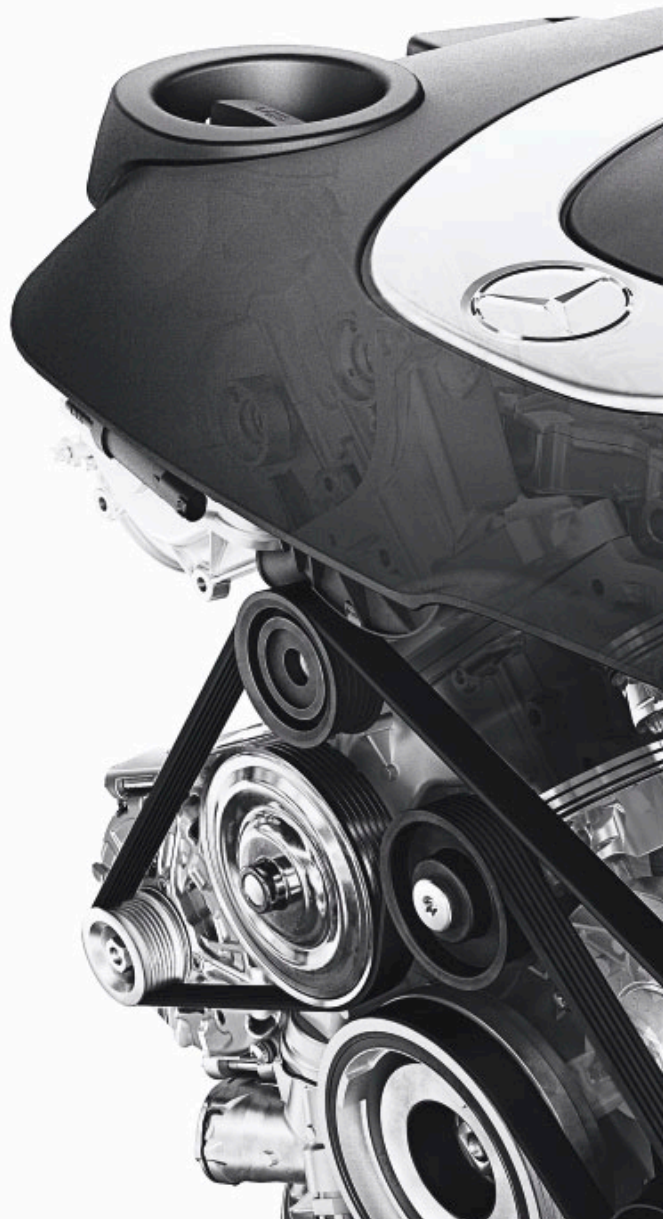
Even the driving pleasure on offer here, however, can be topped: in the E 500 with V8-engine. The key data: 5.5-litre displacement, 285 kW (388 hp) output and a maximum torque of 530 Nm. The result: a sublime driving experience, whatever the situation. Thanks to a lower final drive ratio, we were able to lower the engine speed level – and with it the noise level. The E 500 too is available with 4MATIC all-wheel drive.

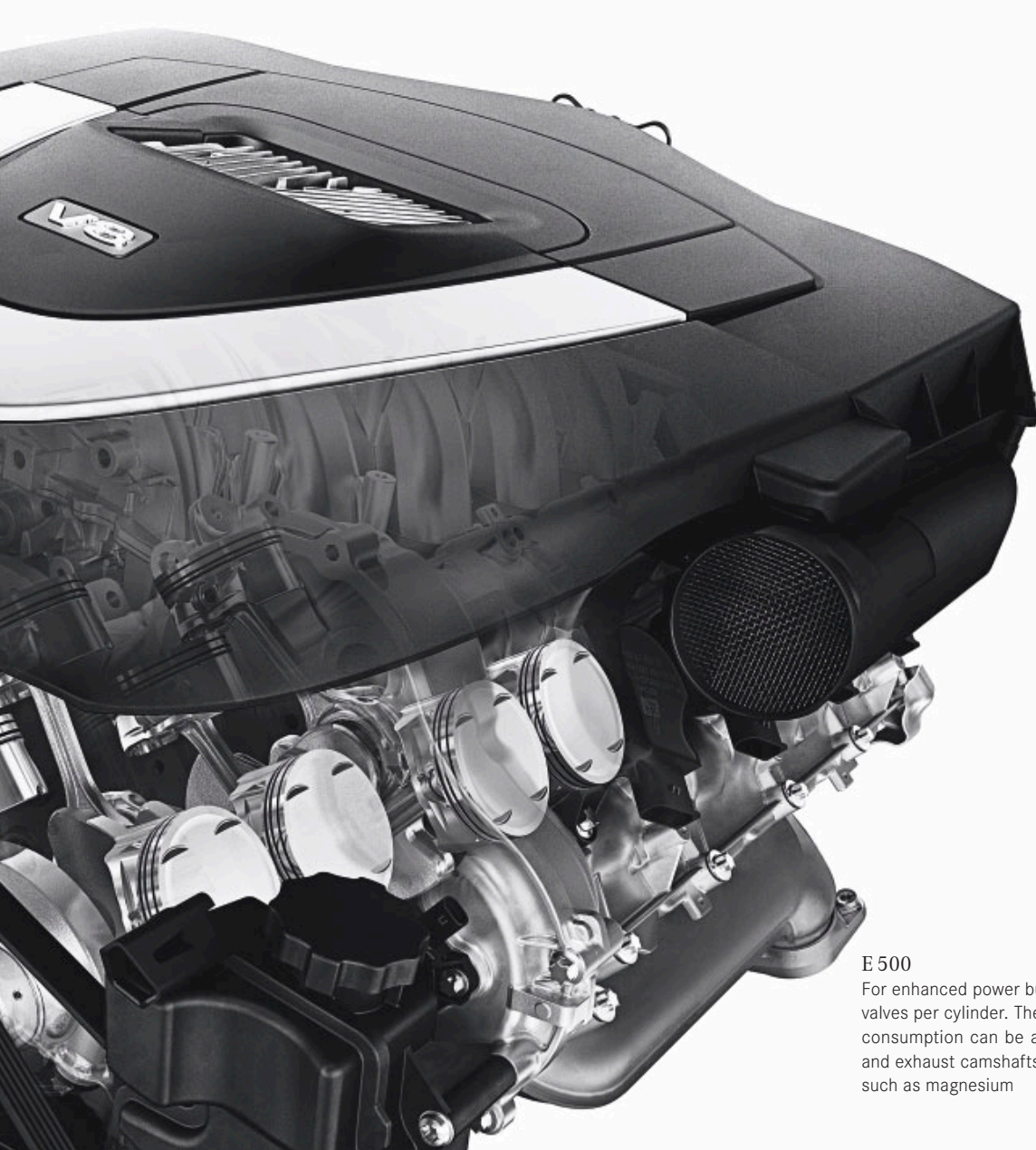
The top-of-the-line E-Class engine is the new AMG high-performance powerplant in the E 63 AMG – with an output of 378 kW (514 hp).



E 500

The maximum torque of 530 Nm is available across a broad engine speed range from 2800 to 4800 rpm





An especially environmentally friendly alternative is offered by the E 200 NGT with its bivalent drive system. You can switch at any time from petrol to natural gas drive. This does not affect the 120-kW (163-hp) output, but does have a positive effect on the environment: the natural gas drive significantly reduces the emission of CO₂, nitrogen oxides, carbon monoxide and reactive hydrocarbons. And in addition to benefiting the environment, the E 200 NGT also benefits your budget, as natural gas is significantly more economical than conventional petrol or diesel fuel.

The E 200 NGT is available as a Saloon and is fitted as standard with a 5-speed automatic transmission.

E 500

For enhanced power build, the V8-engine is fitted with four valves per cylinder. The optimum power output and low consumption can be attributed to the adjustable intake and exhaust camshafts and use of lightweight materials such as magnesium



The Saloon among sports cars

The E 63 AMG with new AMG 6.3-litre V8-engine and 378 kW (514 hp)

The most powerful E-Class comes courtesy of the Mercedes-AMG motorsport experts. The new E 63 AMG has an output of 378 kW (514 hp) and accelerates from 0 to 100 km/h in just 4.5 seconds. But because an E 63 AMG is rarely known to stand still, a maximum torque of 630 Nm ensures that acceleration from any other speed is an equally breathtaking experience. The top speed is electronically governed at 250 km/h, but there are no limits to the driving pleasure on offer. That's partly down to the AMG SPEEDSHIFT 7G-TRONIC transmission. The three shift programs give you a choice between a comfortable or a sporty transmission configuration and manual mode, which lets you change gear using AMG shift paddles on the AMG ergonomic sports steering wheel. This set-up has distinct echoes of the world of motor racing – as do the AMG high-performance braking system, with its composite front brake discs, and the AMG sports suspension, based on AIRMATIC DC air suspension.

In visual terms too the new E 63 AMG cuts a dashing figure: the AMG bodystyling consists of a front apron, specially designed for the E 63 AMG with side air outlets and circular, chrome-ringed fog lamps, a rear apron with a black insert and side skirts. The Saloon also features an AMG spoiler lip on the boot lid.

Other exclusive features of the E 63 AMG include an AMG sports exhaust with two chromed twin tailpipes and 18-inch AMG 5-spoke light-alloy wheels, painted titanium grey and burnished, with size 245/40 R 18 (front) and 265/35 R 18 (rear) tyres.

In the exclusive interior of the E 63 AMG high-quality nappa leather appointments await, with AMG sports seats, featuring Alcantara inserts at shoulder level. There's an AMG ergonomic sports steering wheel to help you to keep the E 63 AMG under firm control, and the selector lever is trimmed in fine leather and Alcantara. Combined, these various features – including RACETIMER in the AMG instrument cluster – assure an exciting motor racing atmosphere on board.

The thrill of AMG can also be experienced in other V6 and V8 E-Class models – with the AMG sports package. This features the contents of the sports package plus AMG bodystyling, consisting of dynamic front and rear aprons and the new 18-inch light-alloy wheels, painted in sterling silver.

E-Class through and through

The CLASSIC equipment line

The E-Class CLASSIC, as the name suggests, has a classic look. The interior features Avignon fabric in a choice of black or sierra grey. Both of these colours are also available in leather or in ARTICO man-made leather as an option.

The wood trim in the interior is made from fine eucalyptus – and creates a particularly pleasant, high-quality ambience.

On the outside you will recognise the E-Class CLASSIC by its 16-inch 7-spoke light-alloy wheels, painted in titanium silver. Equally dynamic: the front apron with integral fog lamps, the rear apron and the side skirts. The radiator grille, with four broad louvres and fine chrome inlay is in silk gloss stone grey.

Eucalyptus trim



7-spoke light-alloy wheels





The E-Class for special occasions

The ELEGANCE equipment line

Elegance comes naturally to the E-Class – and the E-Class ELEGANCE accentuates it to perfection. Inside, the Orléans fabric in black or sierra grey, high-quality burr walnut and fine chrome highlights all play a key role. As an option the seats can be upholstered in ARTICO man-made leather, genuine leather or fine nappa leather – each in black, cashmere beige or sierra grey. The steering wheel in the ELEGANCE equipment line is trimmed with leather as standard, while heated and wood/leather versions are available as an option.

The outer elegance of the E-Class ELEGANCE is underlined by 11-spoke light-alloy wheels, measuring 16 or 17 inches depending on the model.

The radiator grille is finished in gloss atlas grey, and the bumper features integral chrome inlay in the rub strips and chrome-ringed fog lamps. Fine chrome trim strips can also be found on the door handles – together with the side skirts they give the E-Class ELEGANCE a sportily elegant silhouette.

Burr walnut trim



11-spoke light-alloy wheels





Sporty. Dynamic. Active. Seeks driver with similar interests

The AVANTGARDE equipment line

In the AVANTGARDE line you see an E-Class that's a car's length ahead of its time. The seats are upholstered in a combination of Biarritz fabric and ARTICO man-made leather. Whether black or sierra grey, they harmonise perfectly with the bird's-eye maple interior trim. Leather seats are available as an option, in the exclusive colour combinations black, cashmere beige, sierra grey, black/sahara beige and black/cognac brown. Another available option is high-quality nappa leather in black, sierra grey or cashmere beige.

The exterior of the E-Class AVANTGARDE also exudes confidence and style. The broad, black gloss radiator louvres give the front end a particularly distinctive look. The bumper trim features chrome-ringed fog lamps and two chromed louvres. The AVANTGARDE line includes 5-twin-spoke light-alloy wheels, measuring 16 or 17 inches depending on the model. Together with the lower-slung chassis, dropped by 15 mm, the result is all-round dynamism.

Bird's-eye maple trim



5-twin-spoke light-alloy wheels





	<i>CLASSIC</i>	<i>ELEGANCE</i>	<i>AVANTGARDE</i>
Bumpers and side panels	body colour	body colour with chrome trim strips	body colour with chrome trim strips
Door handles	body colour	body colour with chrome inlay	body colour with chrome inlay
Headlamps	clear-lens halogen headlamps	clear-lens halogen headlamps	clear-lens bi-xenon headlamps
Illuminated stowage compartment in centre console	–	□	□
Instruments/dials	black	black, chrome-ringed	white, chrome-ringed
Interior mirror and left-hand exterior mirror automatically dimming	–	□	□
Radiator grille	4 louvres, stone grey, high-gloss	4 louvres, atlas grey, high-gloss	4 louvres, black, high-gloss
Seat belts	black	to match appointments	to match appointments
Steering wheel	foam-padded, black	leather in contrast colour	leather in contrast colour
Tinted glass	green	green	blue
Wheels	light-alloy, 7-spoke	light-alloy, 11-spoke	light-alloy, 5-twin-spoke

□ standard – not part of equipment package

Sports package

Nurture the E-Class's sporting talent - with the optionally available sports package, designed to provide a workout in terms of both design and technology. For advanced contenders, there's also the option of an AMG sports package



STANDARD EQUIPMENT (SELECTION)

ADAPTIVE BRAKE

Aero windscreen wipers, with one-touch wiper function and rain sensor with infinitely variable intermittent wipe setting with two-stage response

Anti-lock braking system (ABS)

ASSYST PLUS service system with service computer

Audio 20 CD radio with telephone keypad, 9 loudspeakers, integral radio aerial in rear window or load compartment side window

Belt tensioners with two-stage belt-force limiters for driver and front passenger, one-stage for outer rear seats

Brake Assist (BAS)

Central locking with interior switch and crash sensor

Cruise control with SPEEDTRONIC variable speed limiter

Electronic immobiliser, incorporating ELCODE locking system with infrared remote control and visual lock confirmation

Electronic Stability Program (ESP®)

Five 3-point seat belts; front height-adjustable, rear with automatic belt-height adjustment (except centre rear)

Five head restraints, crash-responsive NECK-PRO head restraints for driver and front passenger, folding head restraints in rear

Four power windows with one-touch control and obstruction sensor

Heated exterior mirrors, electrically adjustable, with aspherically curved mirror glass and integral indicators

Outside temperature display

Power steering (speed-sensitive steering for V6 and V8 models)

PRE-SAFE®

Rear armrest in appointments colour, with cup holder

Rev counter

Steering column manually adjustable for height and reach

THERMATIC automatic climate control

Tinted glass all round, rear window in single-layer safety glass

Tyre pressure loss warning system

Multifunction steering wheel



Designer key



<i>OPTIONAL EXTRAS (SELECTION)</i>	<i>E 200 CDI</i>	<i>E 220 CDI</i>	<i>E 280 CDI</i>	<i>E 320 CDI</i>	<i>E 420 CDI</i>	<i>E 200 K</i>	<i>E 280</i>	<i>E 350</i>	<i>E 500</i>	<i>E 63 AMG</i>	<i>E 200 NGT</i>
Anti-theft alarm with tow-away protection	●	●	●	●	●	●	●	●	●	●	●
Automatic transmission	●	●	●	□	□	●	●	□	□	□	□
Auxiliary heater with remote control	●	●	●	●	●	●	●	●	●	-	●
DISTRONIC proximity control	●	●	●	●	●	●	●	●	●	●	●
Dynamic multicontour seat for driver and front passenger	●	●	●	●	●	●	●	●	●	●	●
Electric tilting/sliding glass sunroof, with automatic rain-sensor closing function	●	●	●	●	●	●	●	●	●	●	●
harman/kardon LOGIC 7® surround sound system	●	●	●	●	●	●	●	●	●	●	●
Heated multifunction steering wheel	●	●	●	●	●	●	●	●	●	-	●
Heated seats	●	●	●	●	●	●	●	●	●	□	●
Intelligent Light System	●	●	●	●	●	●	●	●	●	●	●
PARKTRONIC	●	●	●	●	●	●	●	●	●	●	●
Semi-active AIRMATIC DC air suspension	●	●	●	●	□	●	●	●	□	□	●
Sports package	-	-	●	●	●	●	●	●	●	-	-

● optional extra □ standard - not available

COMAND APS



KEYLESS-GO



5-twin-spoke light-alloy wheel



10-twin-spoke light-alloy wheel



Markab multi-spoke light-alloy wheel



Mekbuda 5-spoke light-alloy wheel



AMG 5-spoke light-alloy wheel



There's nothing remarkable about four wheels. Unless you decide there should be

The E-Class light-alloy wheels

16 or 17-inch 5-twin-spoke light-alloy wheels are available as an option. The sports package features 18-inch 10-twin-spoke light-alloy wheels, while the range of accessories for the E-Class includes exclusive 17-inch multi-spoke Markab light-alloy wheels and 18-inch 5-spoke Mekbuda light-alloy wheels.

18-inch 5-spoke AMG light-alloy wheels, painted in sterling silver, form part of the AMG sports package and are also available separately as an optional extra.





An E-Class that matches your style to perfection

designo – designed for those with exceptional taste and the highest of standards

designo offers a true feast for the senses. Once your eyes have taken in the many metallic paint finishes and the leather combinations, savour the scent of the fine leather and the touch of the silk matt sealed wood surfaces. Only then will your impression of designo be complete.

The seats, upholstered in finest leather, are available in a single-tone or – for those who prefer things a little more sporty – in a two-tone combination with black side bolsters. For the wood trim you have a choice of designo umber maple grain, designo brown poplar or designo matt red brown cinnamora. As a special extra the roof liner can be finished in Alcantara.

designo offers you an almost endless variety of design options. To make your choice a little easier, we have put together two designo equipment packages for the Saloon.

designo Edition I includes single-tone designo leather in sand for the seats and centre door panels and coordinating trim in designo brown poplar.

With designo Edition II the seats and centre door panels are trimmed in single-tone designo corteccia leather and the trim parts are in designo matt red brown cinnamora.

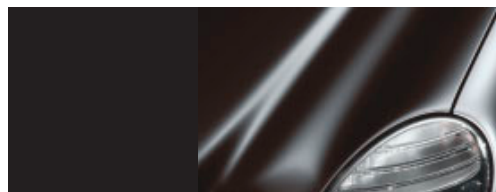
Both designo editions are rounded off with a roof liner in finest anthracite-coloured Alcantara.

Have we whetted your appetite? See the designo brochure for further details.

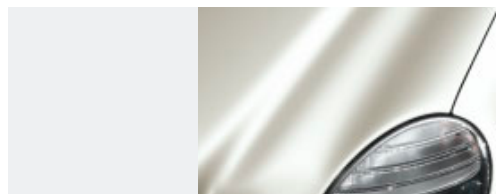
The designo badge
A sign of top quality
and meticulous attention
to detail



NON-METALLIC PAINTS

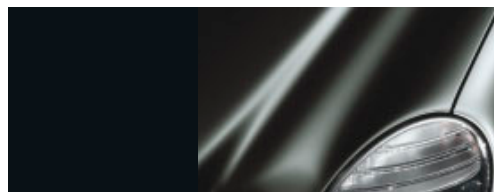


040 black

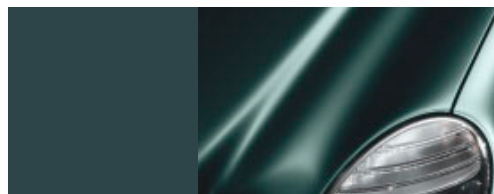


650 calcite white

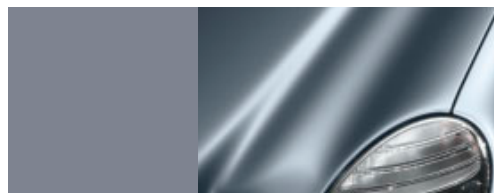
METALLIC PAINTS



197 obsidian black



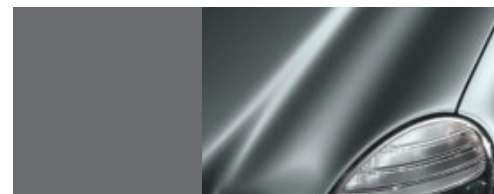
300 periclase green



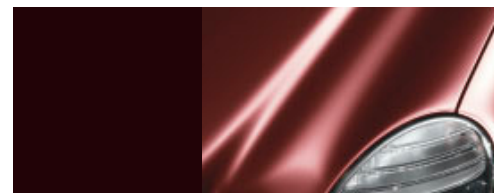
353 teallite blue



359 tanzanite blue



368 flint grey

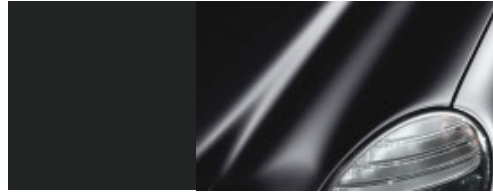


544 carneol red

SPECIAL PAINTS



723 cubanite silver



170 columbite black



747 perlite grey



963 indium grey

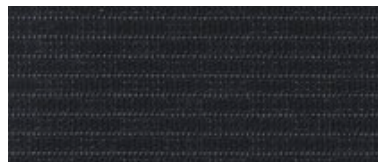


775 iridium silver

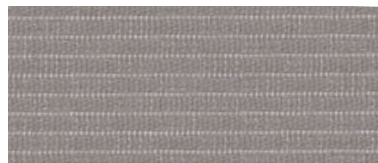
Tougher clearcoat

This clearcoat is significantly more scratch-resistant than conventional paint and is characterised by a more durable sheen which is noticeably more intense. The secret of this protective coat is to be found in the countless tiny ceramic particles (each less than one millionth of a millimetre in size) which are integrated in the paint binding agent. Both non-metallic and metallic paint finishes benefit from the more scratch-resistant clearcoat which makes them less susceptible to the effects of the weather and environmental conditions such as precipitation, sunlight, temperature variations, dust and soot.

CLASSIC
Avignon fabric

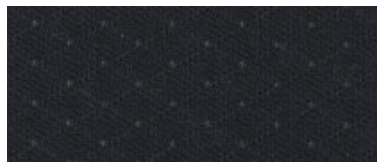


341 black



348 sierra grey

ELEGANCE
Orléans fabric

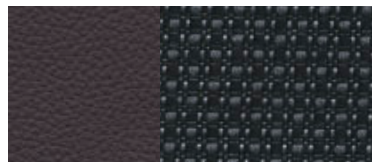


441 black



448 sierra grey

AVANTGARDE Biarritz fabric/
ARTICO man-made leather

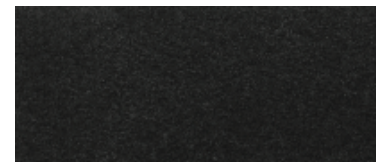


741 black

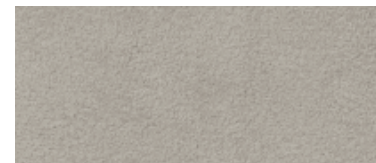


748 sierra grey

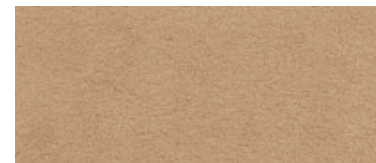
designo Alcantara roof liner
(ELEGANCE & AVANTGARDE)



Y83 anthracite Alcantara

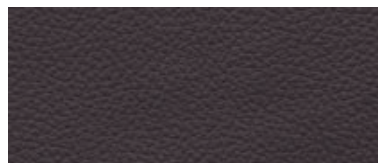


Y87 etna grey Alcantara

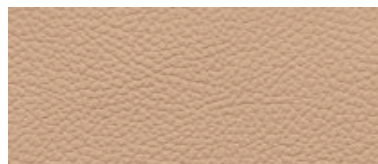


Y89 cashmere beige Alcantara

ARTICO MAN-MADE LEATHER
(CLASSIC, ELEGANCE & sports package)



141 black

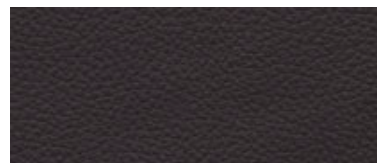


144 cashmere beige¹

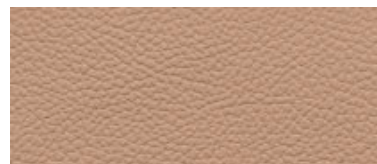


148 sierra grey²

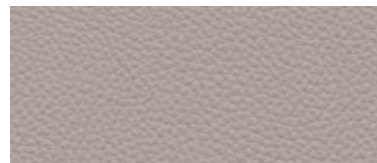
LEATHER (CLASSIC, ELEGANCE
& AVANTGARDE)



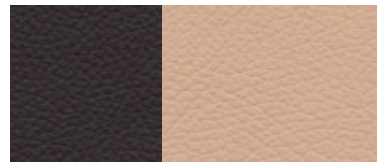
821 black



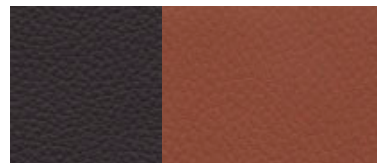
824 cashmere beige³



828 sierra grey

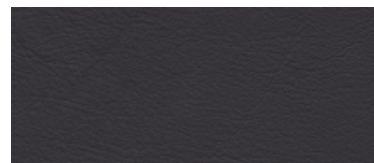


825 black/sahara beige⁴



827 black/cognac brown⁴

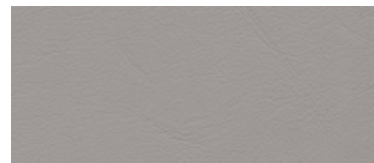
NAPPA LEATHER
(ELEGANCE & AVANTGARDE)



851 black³



854 cashmere beige³

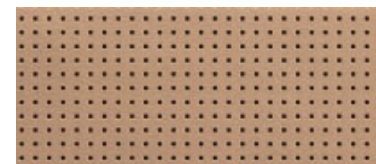


858 sierra grey³

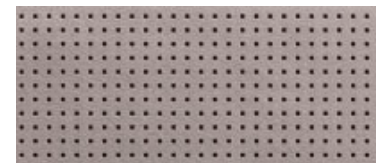
NAPPA LEATHER
(E 63 AMG)



851 black



854 cashmere beige



858 sierra grey

¹For ELEGANCE equipment line only

²For CLASSIC and ELEGANCE equipment lines only

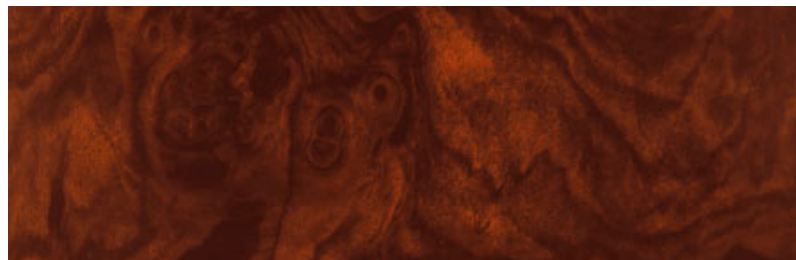
³For ELEGANCE and AVANTGARDE equipment lines only

⁴For AVANTGARDE equipment line only

WOOD



CLASSIC – eucalyptus

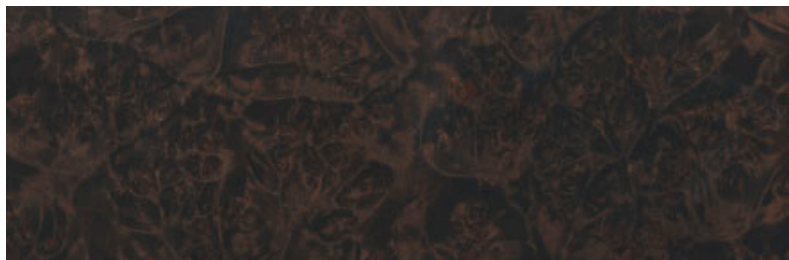


ELEGANCE – burr walnut



AVANTGARDE – black bird's-eye maple

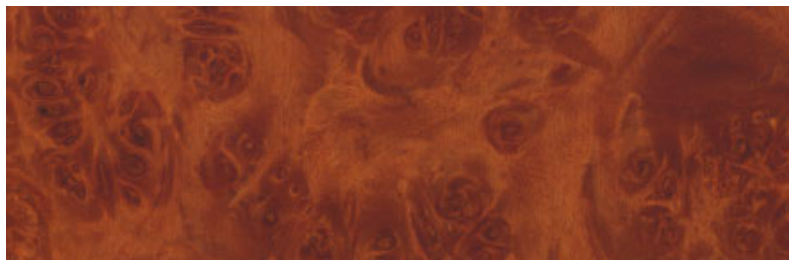
designo WOOD
(Optional extra for ELEGANCE and AVANTGARDE)



W66 designo umber maple grain



W67 designo matt red brown cinnamora



W68 designo brown poplar

	AVIGNON FABRIC (CLASSIC LINE)		ORLEANS FABRIC (ELEGANCE LINE)		BIARRITZ FABRIC/ (AVANTGARDE LINE)		ARTICO MAN-MADE LEATHER			LEATHER					NAPPA LEATHER		
	black	sierra grey	black	sierra grey	black	sierra grey	black	cashmere beige	sierra grey	black	cashmere beige	black/sahara beige	black/cognac brown	sierra grey	black	cashmere beige	sierra grey

NON-METALLIC PAINTS

black	●	●	●	●	●	●	●	●	●	●	●	●	●	●	●	●	●
calcite white	●	●	●	●	●	●	●	○	●	●	○	△	●	●	●	○	●

METALLIC PAINTS

obsidian black	●	●	●	●	●	●	●	●	●	●	●	●	●	●	●	●	●
periclase green	●	○	●	○	●	○	●	●	○	●	●	○	△	○	●	●	○
teallite blue	●	○	●	○	●	○	●	△	○	●	△	○	△	○	●	△	○
tanzanite blue	●	●	●	●	●	●	●	○	●	●	○	●	○	●	●	○	●
flint grey	●	●	●	●	●	●	●	△	●	●	△	○	○	●	●	△	●
carneol red	●	●	●	●	●	●	●	○	●	●	○	△	●	●	●	○	●
cubanite silver	●	○	●	○	●	○	●	△	○	●	△	●	○	○	●	△	○
perlite grey	●	○	●	○	●	○	●	△	○	●	△	△	○	○	●	△	○
iridium silver	●	○	●	○	●	○	●	△	○	●	△	●	○	△	●	△	○

SPECIAL PAINTS

columbite black	●	●	●	●	●	●	●	●	●	●	●	●	●	●	●	●	●
indium grey	●	△	●	△	●	△	●	●	△	●	●	○	△	●	●	●	△

● recommended ○ possible △ not recommended

	<i>E 200 CDI</i>	<i>E 220 CDI¹</i>	<i>E 280 CDI</i>	<i>E 280 CDI 4MATIC</i>	<i>E 320 CDI</i>	<i>E 320 CDI 4MATIC</i>	<i>E 420 CDI</i>
No. of cylinders/arrangement	4/in-line	4/in-line	6/V	6/V	6/V	6/V	8/V
Total displacement (cc)	2148	2148	2987	2987	2987	2987	3996
Rated output ² (kW at rpm)	100/3800	125/3800	140/4000	140/4000	165/3800	165/3800	231/3600
Rated torque ² (Nm at rpm) (automatic transmission)	340/2000 (340/2000)	400/2000 (400/2000)	400/1400-3200 (440/1400-2800)	- (440/1400-2800)	- (540/1600-2400)	- (510/1600-2800)	- (730/2200)
Compression ratio	17.5	17.5	17.7	17.7	17.7	17.7	16.7
Acceleration 0-100 km/h (s) (automatic transmission)	9.9 (9.9)	8.4 (8.6)	8.6 (7.6)	- (8.2)	- (6.8)	- (7.4)	- (6.1)
Top speed, approx. (km/h) (automatic transmission)	214 (211)	227 (225)	241 (238)	- (234)	- (250) ⁴	- (244)	- (250) ⁴
Tyre size							
front	205/60 R 16	205/60 R 16	225/55 R 16	225/55 R 16	225/55 R 16	225/55 R 16	245/45 R 17
rear	205/60 R 16	205/60 R 16	225/55 R 16	225/55 R 16	225/55 R 16	225/55 R 16	245/45 R 17
Fuel	Diesel	Diesel	Diesel	Diesel	Diesel	Diesel	Diesel
Fuel consumption ⁵ (l/100 km)							
urban (automatic transmission)	8.6 (8.3)	8.7 (9.1)	9.5-9.7 (10.1-10.4)	- (10.4-10.6)	- (10.3-10.6)	- (10.5-10.7)	- (13.2)
extra-urban (automatic transmission)	5.0 (5.5)	5.0 (5.4)	5.4-5.6 (5.6-5.9)	- (6.3-6.5)	- (5.6-6.0)	- (6.4-6.6)	- (7.0)
combined (automatic transmission)	6.3 (6.5)	6.3 (6.7)	6.9-7.1 (7.2-7.5)	- (7.8-8.0)	- (7.3-7.6)	- (7.9-8.1)	- (9.3)
CO ₂ emissions ⁵ (g/km) combined (automatic transmission)	167 (173)	167 (177)	183-189 (191-199)	- (207-212)	- (194-202)	- (210-215)	- (246)
Tank capacity (l)/incl. reserve, approx.	65/8	65/8	65/8	65/8	80/9	80/9	80/9
Load capacity (l)	540	540	540	540	540	540	530
Turning circle diameter (m)	11.4	11.4	11.4	11.5	11.4	11.5	11.4
Kerb weight ⁶ (kg)	1615	1615	1715	1840	1750	1845	1910
Perm. GVW (kg)	2140	2140	2240	2365	2275	2370	2435

E 200 KOMPRESSOR	E 280	E 280 4MATIC	E 350	E 350 4MATIC	E 500	E 500 4MATIC	E 63 AMG
4/in-line	6/V	6/V	6/V	6/V	8/V	8/V	8/V
1796	2996	2996	3498	3498	5461	5461	6208
135/5500	170/6000	170/6000	200/6000	200/6000	285/6000	285/6000	378/6800
250/3500-4000 (250/3500-4000)	300/2500-5000 (300/2500-5000)	- (300/2500-5000)	- (350/2400-5000)	- (350/2400-5000)	- (530/2800-4800)	- (530/2800-4800)	- (630/5200)
8.5	11.3	11.3	10.7	10.7	10.7	10.7	11.3
9.1 (9.4)	7.3 (7.3) ³	- (7.8)	- (6.9) ³	- (7.1)	- (5.3) ³	- (5.5)	- (4.5)
236 (232)	250 ⁴ (248)	- (244)	- (250) ⁴	- (250) ⁴	- (250) ⁴	- (250) ⁴	- (250) ⁴
205/60 R 16 205/60 R 16	205/60 R 16 205/60 R 16	205/60 R 16 205/60 R 16	225/55 R 16 225/55 R 16	225/55 R 16 225/55 R 16	245/45 R 17 245/45 R 17	245/45 R 17 245/45 R 17	245/40 R 18 265/35 R 18
Premium	Premium	Premium	Premium	Premium	Premium	Premium	Super Plus
11.7-12.2 (12.1-12.6)	13.4-13.6 (13.5-13.8)	- (13.8-14.2)	- (14.0-14.4)	- (14.5-14.9)	- (16.9)	-*	- (22.3)
6.3-6.7 (6.5-6.8)	6.9-7.1 (7.0-7.3)	- (7.6-8.0)	- (7.2-7.8)	- (8.0-8.3)	- (8.2)	-*	- (9.8)
8.2-8.8 (8.5-8.9)	9.3-9.5 (9.4-9.7)	- (9.9-10.2)	- (9.7-10.2)	- (10.4-10.7)	- (11.5)	-*	- (14.3)
195-210 (202-212)	222-227 (224-232)	- (237-245)	- (231-244)	- (247-255)	- (273)	- -*	- (341)
65/8	65/8	65/8	80/9	80/9	80/9	80/9	80/9
540	540	540	540	540	530	530	530
11.4	11.4	11.5	11.4	11.5	11.4	11.5	11.4
1580	1660	1780	1690	1785	1785	1880	1840
2105	2185	2305	2215	2310	2310	2405	2365

¹Increased output in comparison with E 200 CDI is a result of changes to engine management

²Figures according to Directive 80/1269/EEC in the currently applicable version

³With optional extra sports package and automatic transmission, acceleration from 0 to 100 km/h in Manual mode is 0.2 seconds faster

⁴Electronically governed

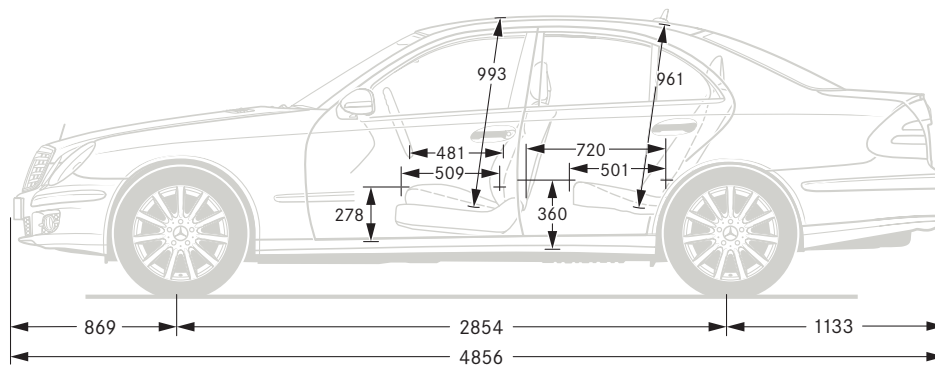
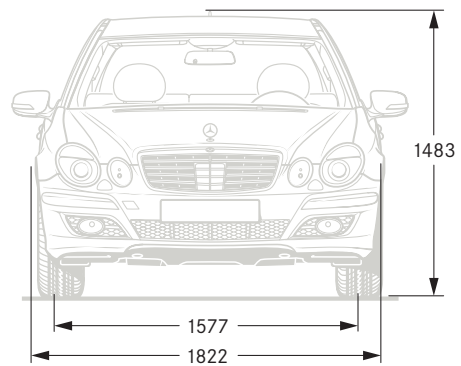
⁵The figures shown were obtained in accordance with the prescribed measuring process (Directive 80/1268/EEC in the currently applicable version).

The figures are not based on an individual vehicle and do not constitute part of the product offer; they are provided solely for purposes of comparison between different vehicle models

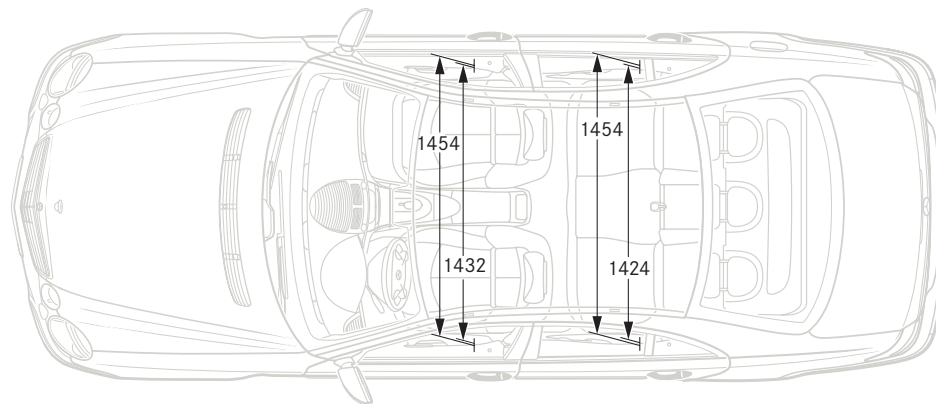
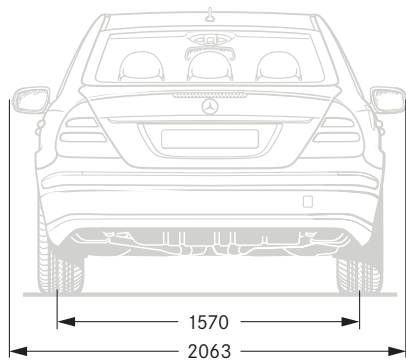
⁶Figures according to Directive 92/21/EC, version 95/48/EC (kerb weight with fuel tank 90% full, driver, 68 kg, and luggage, 7 kg) for standard-specification vehicles.

Optional extras and accessories will generally increase this figure and reduce the payload capacity accordingly

*Figures not yet available



All measurements in millimetres. The dimensions shown are mean values and apply to standard-specification, unladen vehicles



Would you like to know more about this car? An interactive Owner's Manual is available at www.mercedes-benz.de/betriebsanleitung

	<i>E 220 CDI</i>	<i>E 280 CDI</i>	<i>E 280 CDI 4MATIC</i>	<i>E 320 CDI</i>	<i>E 320 CDI 4MATIC</i>
No. of cylinders/arrangement	4/in-line	6/V	6/V	6/V	6/V
Total displacement (cc)	2148	2987	2987	2987	2987
Rated output ¹ (kW at rpm)	125/3800	140/4000	140/4000	165/3800	165/3800
Rated torque ¹ (Nm at rpm) (automatic transmission)	400/2000 (400/2000)	400/1400–3200 (440/1400–2800)	– (440/1400–2800)	– (540/1600–2400)	– (510/1600–2800)
Compression ratio	17.5	17.7	17.7	17.7	17.7
Acceleration 0–100 km/h (s) (automatic transmission)	9.1 (9.1)	9.1 (8.2)	– (9.0)	– (7.3)	– (8.1)
Top speed, approx. (km/h) (automatic transmission)	218 (218)	231 (230)	– (226)	– (240)	– (236)
Tyre size					
front	225/55 R 16	225/55 R 16	225/55 R 16	225/55 R 16	225/55 R 16
rear	225/55 R 16	225/55 R 16	225/55 R 16	225/55 R 16	225/55 R 16
Fuel	Diesel	Diesel	Diesel	Diesel	Diesel
Fuel consumption ⁴ (l/100 km)					
urban (automatic transmission)	9.6 (9.8)	10.0–10.2 (10.6–11.0)	– (10.9–11.5)	– (10.6–11.0)	– (11.0–11.6)
extra-urban (automatic transmission)	5.6 (5.9)	5.6–5.8 (5.9–6.4)	– (6.7–6.8)	– (5.9–6.4)	– (6.8–6.9)
combined (automatic transmission)	7.1 (7.3)	7.2–7.4 (7.6–8.1)	– (8.2–8.5)	– (7.6–8.1)	– (8.3–8.6)
CO ₂ emissions ⁴ (g/km) combined (automatic transmission)	188 (194)	191–196 (202–215)	– (218–226)	– (202–215)	– (220–228)
Tank capacity (l)/incl. reserve, approx.	70/8	70/8	70/8	80/9	80/9
Load capacity (l)	690	690	690	690	690
Turning circle diameter (m)	11.4	11.4	11.5	11.4	11.5
Kerb weight ⁵ (kg)	1785	1845	1965	1885	1980
Perm. GVW (kg)	2360	2420	2540	2460	2555

<i>E 200 KOMPRESSOR</i>	<i>E 280</i>	<i>E 280 4MATIC</i>	<i>E 350</i>	<i>E 350 4MATIC</i>	<i>E 500</i>	<i>E 500 4MATIC</i>	<i>E 63 AMG</i>
4/in-line	6/V	6/V	6/V	6/V	8/V	8/V	8/V
1796	2996	2996	3498	3498	5461	5461	6208
135/5500	170/6000	170/6000	200/6000	200/6000	285/6000	285/6000	378/6800
250/3500-4000 (250/3500-4000)	300/2500-5000 (300/2500-5000)	- (300/2400-5000)	- (350/2400-5000)	- (350/2400-5000)	- (530/2800-4800)	- (530/2800-4800)	- (630/5200)
8.5	11.3	11.3	10.7	10.7	10.7	10.7	11.3
9.5 (9.7)	8.1 (7.9) ²	- (8.3)	- (7.1) ²	- (7.4)	- (5.4) ²	- (5.7)	- (4.6)
225 (222)	246 (238)	- (232)	- (250) ³	- (245)	- (250) ³	- (250) ³	- (250) ³
225/55 R 16 225/55 R 16	225/55 R 16 225/55 R 16	225/55 R 16 225/55 R 16	225/55 R 16 225/55 R 16	225/55 R 16 225/55 R 16	245/45 R 17 245/45 R 17	245/45 R 17 245/45 R 17	245/40 R 18 265/35 R 18
Premium	Premium	Premium	Premium	Premium	Premium	Premium	Super Plus
12.4-12.6 (12.9-13.0) 6.7-7.0 (6.9-7.4) 8.9-9.1 (9.2-9.4)	13.7-13.9 (13.8-14.1) 7.2-7.4 (7.3-7.6) 9.6-9.8 (9.7-10.0)	- (14.3-14.6) - (8.0-8.3) - (10.3-10.6)	- (14.1-14.6) - (7.5-8.0) - (9.9-10.4)	- (14.7-15.3) - (8.3-8.5) - (10.6-11.0)	- (17.3) - (8.5) - (11.8)	-* -* -*	- (22.6) - (9.9) - (14.5)
212-217 (219-224)	229-234 (232-239)	- (246-253)	- (236-248)	- (253-261)	- (280)	- -*	- (345)
70/8	70/8	70/8	80/9	80/9	80/9	80/9	80/9
690	690	690	690	690	670	670	670
11.4	11.4	11.5	11.4	11.5	11.4	11.5	11.4
1720	1785	1905	1810	1910	1895	1990	1955
2295	2360	2480	2385	2485	2460	2535	2460

¹ Figures according to Directive 80/1269/EEC in the currently applicable version

² With optional extra sports package and automatic transmission, acceleration from 0 to 100 km/h in Manual mode is 0.2 seconds faster

³ Electronically governed

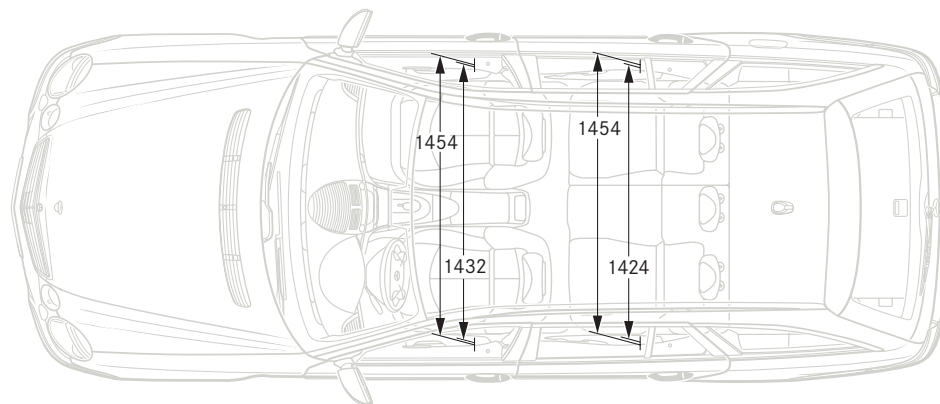
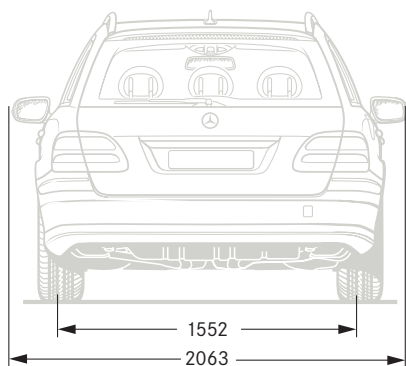
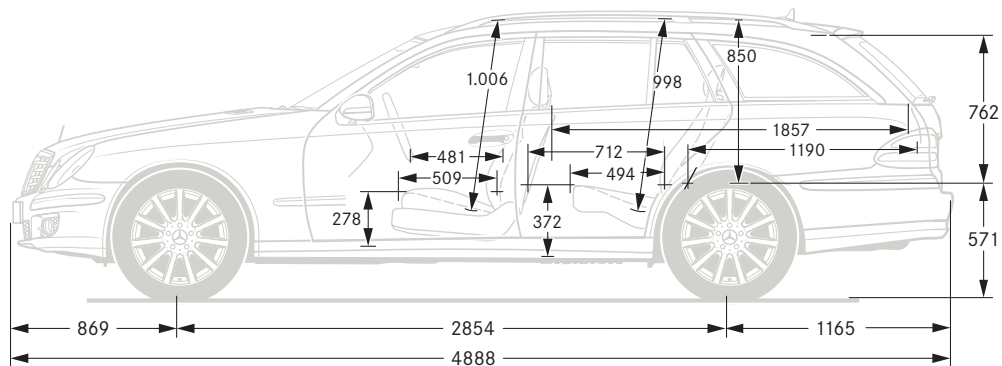
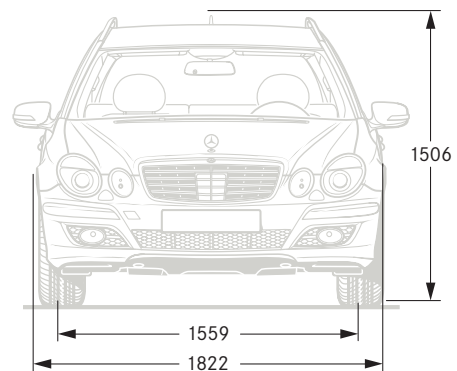
⁴ The figures shown were obtained in accordance with the prescribed measuring process (Directive 80/1268/EEC in the currently applicable version).

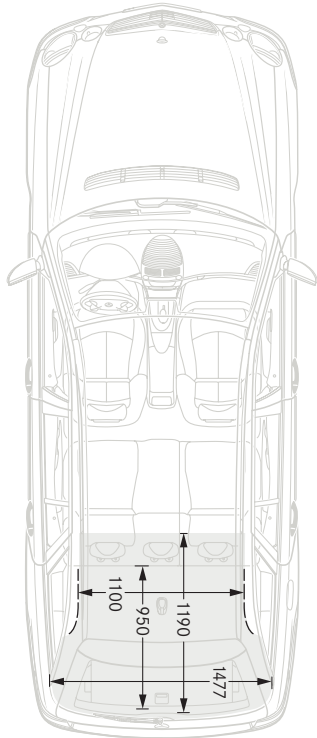
The figures are not based on an individual vehicle and do not constitute part of the product offer; they are provided solely for purposes of comparison between different vehicle models

⁵ Figures according to Directive 92/21/EC, version 95/48/EC (kerb weight with fuel tank 90% full, driver, 68 kg, and luggage, 7 kg) for standard-specification vehicles.

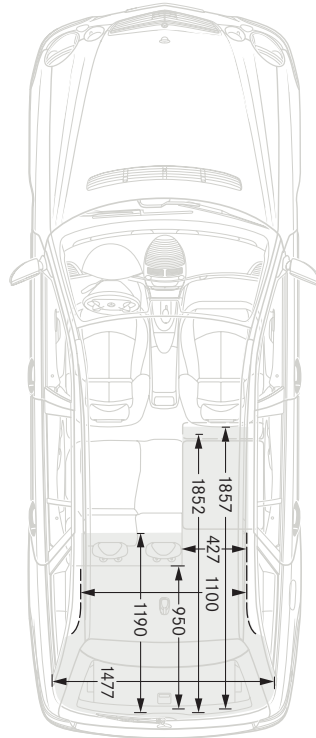
Optional extras and accessories will generally increase this figure and reduce the payload capacity accordingly

* Figures not yet available

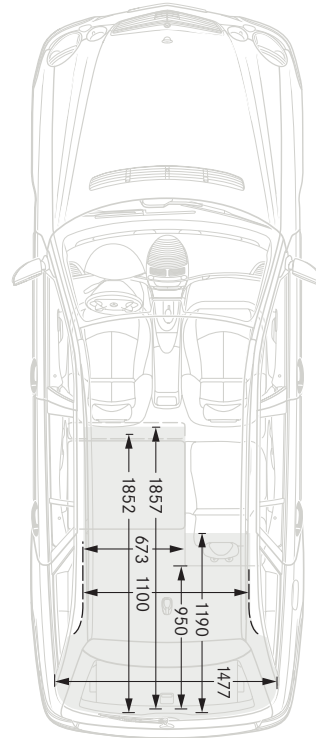




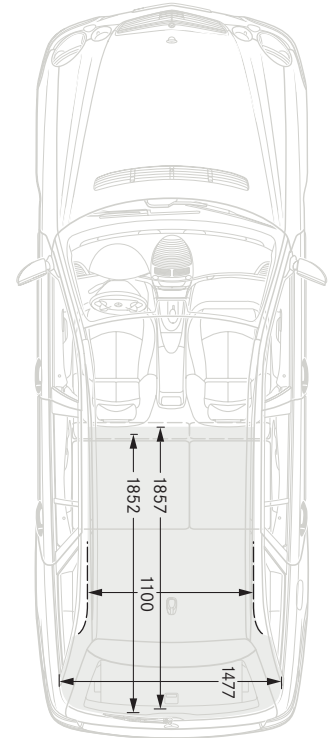
5 seats



4 seats



3 seats



2 seats



Take-back of end-of-life vehicles. Coming full circle

At the end of its long life, you can return your E-Class to us for environment-friendly disposal in accordance with the EC End-of-Life Vehicle Directive¹. But that day lies a long way off.

¹Applies in accordance with national regulations to vehicles up to 3.5 t permissible gross weight. Mercedes-Benz vehicles have met the statutory regulations governing the suitability of the vehicle's design for reuse and recycling for a number of years now. A network of vehicle take-back depots and dismantlers has been established which will process your vehicle in an environment-friendly manner. The ways in which both vehicles and parts can be recovered are subject to ongoing development and improvement. Consequently, the E-Class will be able to comply with any future increases in the recycling quota within the stipulated time limits. For further information, please call 00800 1 777 7777.

Please note: changes may have been made to the product since this brochure went to press (27.01.2006). The manufacturer reserves the right to make changes to the design, form, colour and specification during the delivery period, provided these changes, while taking into account the interests of the vendor, can be deemed reasonable with respect to the purchaser. Where the vendor or the manufacturer uses symbols or numbers to describe an order or the subject of an order, no rights may be derived solely from these. The illustrations may show accessories and items of optional equipment which are not part of standard specification. Colours may differ slightly from those shown, owing to the limitations of the printing process. This brochure has been compiled by DaimlerChrysler AG of Germany and is distributed internationally. It provides a general indication of the range of models, features, optional extras and/or colours available in various countries. Some of the models, features, optional extras and/or colours shown may not be available in your country or may only be available in a different specification. Additionally some models, features, optional extras and/or colours may only be available in combination with others. For current and more specific information in relation to the range of models, features, optional extras and/or colours available in your country, and their pricing, you should contact your nearest authorised Mercedes-Benz Passenger Car Dealer.