

IMPORTANT!

This brochure has been compiled by Daimler AG of Germany or one of its Group Companies to provide a general indication only of the range of vehicles, optional extras (for example satellite navigation systems, interface and telecommunication kits), accessories, merchandise and/or products (together, the range is known as the “Products”) available in various countries. Some of the Products shown may not be available in Australia, or may only be available in a different specification. Additionally, some Products may only be available in combination with others. Colours may differ slightly from those shown in the brochure, owing to the limitations of the printing process. Products available while stocks last. Changes may have been made to the Products since this brochure was printed. The information in this brochure is therefore indicative, illustrative and provided only for guidance and should not be relied upon. For current information on the availability, design, features and prices of Products available in Australia you should contact your local authorised Mercedes-Benz Dealer.



Mercedes-Benz



Genuine accessories for the B-Class

Mercedes-Benz



CONTENTS

EXTERIOR

Light-alloy wheels | Wheel accessories | Styling accessories **04**

TELEMATICS

iPod integration | Navigation | Telephony **12**

INTERIOR

Interior appointments | Child safety **18**

CARGO & CARE

Carrier systems | Load compartment accessories **24**

COLLECTION

Mercedes-Benz Lifestyle Collection **36**





D S  OW 4104 



Light-alloy wheels
Wheel accessories
Styling accessories

EXTERIOR



Anshan | 10-spoke wheel

incenio designer wheel

Finish: sterling silver

Wheel: 6 J x 16 ET 46 | Tyre: 205/55 R16

Breathtaking

Powerful design on the outside. Intelligent use of space on the inside. The B-Class's distinctive looks make it an unmistakable and eye-catching presence on today's roads.

The challenge for our design engineers was to create a series of individual highlights to help enhance the successful concept.

Judge for yourself which of the **incenio** designer wheels shown on this page would result in the most breathtaking look for your own B-Class.



Bokhan | 5-twin-spoke wheel

| pictured on previous pages |

incenio designer wheel | Finish: sterling silver

Wheel: 7 J x 17 ET 49 | Tyre: 215/45 R17

Option in titanium silver also available

On all light-alloy wheels, use wheel bolt A000 990 4907 and the corresponding rim lock B6 647 0155.

Light-alloy wheels are supplied without tyres, wheel bolts or hub caps.



Kochab | 12-spoke wheel

incenio designer wheel

Finish: sterling silver

Wheel: 6 J x 16 ET 46

Tyre: 205/55 R16

Option in titanium silver also available



Zaurak | 7-spoke wheel

incenio designer wheel

Finish: titanium silver, high-sheen

Wheel: 7 J x 17 ET 49

Tyre: 215/45 R17



Sadalbari | 5-twin-spoke wheel

incenio designer wheel

Finish: sterling silver

Wheel: 7 J x 18 ET 49

Tyre: 215/40 R18

Tyre pressure gauge

Compact design. Saves readings. Suitable for all tyre valves (including cycle tyres). Keeping tyres at the optimum pressure saves fuel and reduces tyre wear. Supplied with leather pouch | not pictured |

EXTERIOR

incenio designer wheels



Hub caps

Protect the hub from dirt.

Available in the following versions:

- 1 | Classic Roadster design in blue
- 2 | Classic Roadster design in black
- 3 | Sterling silver with chrome star
- 4 | Titanium silver with chrome star

Rim locks

Set consisting of coded key and one lock per wheel



Valve caps

Wheel bolts

| not pictured |



On all light-alloy wheels, use wheel bolt A000 990 4907 and the corresponding rim lock B6 647 0155.

Light-alloy wheels are supplied without tyres, wheel bolts or hub caps.



5-spoke wheel

Finish: titanium silver

Wheel: 6 J x 16 ET 46

Tyre: 205/55 R16



5-twin-spoke wheel

Finish: titanium silver

Wheel: 7 J x 17 ET 49

Tyre: 215/45 R17

5-spoke wheel
Finish: titanium silver
Wheel: 6 J x 16 ET 46
Tyre: 205/55 R16



10-spoke wheel
Finish: sterling silver
Wheel: 7 J x 17 ET 49
Tyre: 215/45 R17

Option in titanium silver also available



5-spoke wheel
Finish: chrome
Wheel: 7 J x 17 ET 49
Tyre: 215/45 R17



Mud flaps

Protect the underbody and the sides of the car from loose chippings and dirt. For front and rear axles

Snow chain systems

Rudmatic-Disc has a user-friendly design and can be fitted quickly. A tough plastic disc protects your prized light-alloy wheel from scratches. Your Mercedes-Benz partner will be happy to advise you on this and other snow chain systems

5-twin-spoke wheel

Finish: sterling silver

Wheel: 6 J x 16 ET 46

Tyre: 205/55 R16

Option in titanium silver also available

*Mercedes-Benz
light-alloy wheels*

Hub caps

Mud flaps

Rim locks

Snow chains

Valve caps

Wheel bolts

EXTERIOR



Chrome-look indicator bulbs
Mirrored indicator bulbs round off the chrome finish of your B-Class to perfection | standard equipment pictured above |

17" AMG 5-spoke wheel, Style III

AMG light-alloy wheel
Finish: sterling silver
Wheel: 7 J x 17 ET 49
Tyre: 215/45 R17

18" AMG 5-spoke wheel, Style III

AMG light-alloy wheel
Finish: titanium silver
Wheel: 7 J x 18 ET 49
Tyre: 215/40 R18

AMG floor mats
Embroidered with AMG lettering | not pictured |





High-shine chromed door handle recesses
Round off your B-Class's chrome finish and protect the paintwork from scratches

High-shine chromed exterior mirror housings
The high-shine chromed mirror housings are a particularly distinctive part of the chrome finish concept for the B-Class



Tail light
Sporty look with dark-tinted meander
| standard equipment
pictured top left |



Roof spoiler
The roof spoiler is precision-tailored to the body of the B-Class for a distinctive and sporty look. Supplied primed. To be painted in body colour by your Mercedes-Benz partner
Note: not in conjunction with tailgate-mounted bicycle rack (see page 29)

*AMG light-alloy wheels
AMG floor mats
Roof spoiler
Exterior mirror housings
Door handle recesses
Indicator bulbs
Tail light*

EXTERIOR

15:02

B.B. King



3 You Know I Love You 00:02

iPod 18

Media Inter Music Media Sound



iPod® Interface

*Media Interface
consumer cables*

Audio/navigation

Telephony

Brains

The intelligent flexibility provided on board your Mercedes-Benz B-Class was probably one of the reasons you chose it in the first place.

Here's another reason: vehicles with the optional Media Interface offer flexibility when it comes to musical entertainment on board too - connecting a variety of devices from the iPhone to a USB player.



Media Interface consumer cables

For models with optional extra "Media Interface" (Code 518)

Set of 3 cables, designed to connect various players (one at a time) to the pre-installed Media Interface in the glove compartment. Allows you to select tracks and adjust the playback via your car's audio system.

The current status of your player also appears in the central driver's display, helping you to keep your attention focused on the traffic.

Designed to connect iPods¹ [2] and devices with USB [1] or AUX [3]



Mercedes-Benz iPod® Interface Kit²

It's easy to control your iPod via the multifunction steering wheel: scroll through the menus [A], adjust the playback and volume [B] and display the artist/title of your choice in the instrument cluster [C].

As with the Mercedes-Benz Media Interface, the connection for your iPod is in the glove compartment. Your iPod's battery is charged while it is connected. No factory-fitted optional extra required



iPod/iPhone holder²

Black plastic holder for the glove compartment. Holds your iPod in place. Soft, flock surface protects the player from scratches and prevents it sliding around



*iPod Interface Kit
iPod/iPhone holder*

*Media Interface
consumer cables*

¹ For details and a list of the supported players, please contact any Mercedes-Benz service outlet or visit the "Accessories" section of our website: www.mercedes-benz-mobile.com

² The Mercedes-Benz Interface Kit allows you to listen to the music on your iPhone. It does not support the phone function

The iPod Interface Kit and the iPod holder are compatible with the following models: iPod (from 4th generation) | iPod video | iPod photo | iPod U2 | iPod mini | iPod nano 1st, 2nd and 3rd generations | iPod classic | iPod touch | iPhone

iPod/iPhone holder cannot be used in conjunction with Media Interface consumer cables

Optional extra Media Interface (Code 518) not available for Audio 20 CD without CD changer (Code 523) or Audio 5 CD (Code 520)



Audio 5 CD

Radio and CD player with monochrome display. Features FM/AM single tuner with RDS function. Can be operated via the multifunction steering wheel
Audio 5 CD only available in conjunction with loudspeaker pre-installation (Code 533)

Audio 20 CD with CD changer

Double-tuner radio with 5" colour display. Bluetooth interface with hands-free function. CD changer is MP3-compatible. Can be operated via the multifunction steering wheel



Audio 50 APS with 6-DVD changer

Navigation system and car hi-fi combined in one unit which can be operated via the multifunction steering wheel. Dynamic route guidance via RDS/TMC. Navigation arrows shown on 5" TFT colour display. Bluetooth® connectivity for automatic transfer of contacts, with hands-free function as standard. Double-tuner radio with 4-channel amplifier for outstanding sound. DVD changer controls. Also available without DVD changer as an option

Europe navigation DVDs for Audio 50 APS

The whole of Europe on three DVDs



Europe navigation DVD for COMAND APS

The whole of Europe on one DVD



The data for the Mercedes-Benz navigation systems is regularly updated. Please ask your Mercedes-Benz partner for the latest version



COMAND APS with 6-DVD changer

The new COMAND APS now offers even more convenience and freedom when you're on the move: your route is navigated with impressive speed, thanks to the integral hard drive. The MUSIC REGISTER has up to 4 GB of memory, offering virtually unlimited space for your favourite music. COMAND APS plays back music from DVDs and CDs and from SD memory cards. The optional Media Interface (see page 14) also allows you to connect your mobile music player. And for convenience and enhanced safety, all of these functions can be controlled via your COMAND system. Other features: Bluetooth® connectivity, 6.5" TFT colour display, dynamic route guidance (RDS/TMC), double-tuner radio with 4-channel amplifier for outstanding sound, DVD changer controls. Also available without DVD changer as an option



Mercedes-Benz StreetPilot III

An all-rounder with an excellent sense of direction: the retrofit navigation system with integral MP3 player and Bluetooth interface for hands-free use of your mobile phone. 4.3" touchscreen with zoomable 3D map display. Pre-installed with European road network. Automatic radio mute and TMC congestion avoidance function. Another highlight: the text-to-speech function for voice input of road names



Mobile-phone holders

When it comes to selecting a mobile for your Mercedes-Benz, you've never had so much choice. One "click" is all it takes to replace the system's intelligent mobile-phone holder. It takes a matter of seconds and is as straightforward a process as inserting the mobile into the holder itself. Changing your mobile and even alternating between different models of mobile no longer presents a problem. There are no compromises when it comes to convenience-enhancing technology either: the telephone can be operated via the multifunction steering wheel, and the telephone status and call information are displayed in the central multifunction display - as you would expect

To use a mobile-phone holder, your car must be factory-fitted with the following optional extra:


Code 386 Convenience telephony

Holders are available for a variety of popular mobile phones. Please contact your Mercedes-Benz partner for details.

For further information about using the phone while in your car, see our Mercedes-Benz telematics brochures

- Audio 5 CD*
- Audio 20 CD*
- Audio 50 APS*
- COMAND APS*
- StreetPilot*
- Navigation DVDs*
- Mobile-phone holders*





*Interior appointments
Child safety*

INTERIOR

Bodyguard

Comfort, flexibility, dynamism – your B-Class is designed to offer a whole range of qualities you'll appreciate. But safety is always at the heart of every Mercedes-Benz development process.

It is a quality that is of paramount importance to each of your passengers. Particularly the younger ones.



"KidFix" child seat

Booster seat for optimum side impact protection, with height-adjustable backrest. The "KidFix" seat can be fixed in place using ISOFIX points or 3-point seat belt. Available with automatic child seat recognition as an option. For children between the ages of around 3.5 and 12 (15 to 36 kg). Removable, washable "DaimlerSquare" cover

| available from autumn 2008 |



"KID" child seat

Booster seat with height-adjustable backrest. The belt guides at the sides prevent the lap belt from sliding over the child's abdomen. Available with automatic child seat recognition as an option. For children between the ages of around 3.5 and 12 (approx. 15 to 36 kg). Removable, washable "DaimlerSquare" cover



"DUO plus" child seat

Optimum safety for children between the ages of around 8 months and 4 years (9 to 18 kg). Fitted as standard with top tether, an additional belt for securing the head section, a height-adjustable shoulder belt and ventilation channels. With automatic child seat recognition and ISOFIX attachment points. Adjustable tilt. Removable, washable "DaimlerSquare" cover

Mercedes-Benz child seats are available with automatic child seat recognition as an option. If your car also has automatic child seat recognition, the technology automatically deactivates the front passenger airbag when a child seat with automatic child seat recognition is installed on the front passenger seat.

All child seats are also suitable for use in vehicles without ISOFIX attachment points.

For further information on the Mercedes-Benz child safety range, ask your Mercedes-Benz partner for a copy of our separate brochure



Cover for integral child seat

Hardwearing, easy-care material. The side bolsters offer additional support and transform the booster-style integral child seat [A] into a child seat for children up to the age of around 12 (up to 36 kg) [B]

Padded play table for integral child seat

Protects the child's abdomen when using the integral child seat. For children between the ages of around 2 and 4 (12.5 to 18 kg) [C]



Additional interior mirror

Designed to help you keep an eye on what's going on in the rear of the car. This practical product, made from shatterproof safety glass, is simple to snap into place



"BABY-SAFE plus" child seat

Deep, moulded seat design offers extra side-impact protection for optimum safety. Special padding, designed to protect particularly vulnerable body areas of children up to around 15 months (up to 13 kg). Removable, washable "DaimlerSquare" cover



Vario bag

Plenty of extra stowage space for the really important things in life. Available in three designs: "DaimlerSquare" fabric | pictured | "Angel & Driver" fabric Alcantara, java

*Child seats
Additional interior mirror
Vario bag*

INTERIOR

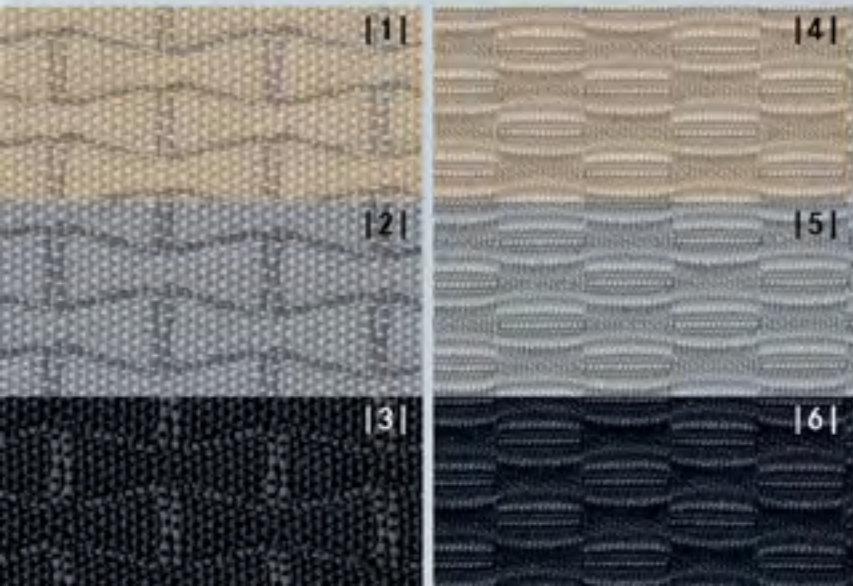


All-season mats, velour mats, rep mats
Durable, hardwearing materials. Available in various colours to match the interior. Can be clip-fastened to the floor of the vehicle to prevent slipping

Seat covers

Easy-care polyester fabric, available in the following designs:

CLASSIC beige [1] alpaca grey [2] black [3]
ELEGANCE beige [4] alpaca grey [5] black [6]
AVANTGARDE alpaca grey [5] black [6]



Illuminated door sill panels, front | pictured |
The blue illuminated Mercedes-Benz lettering is activated every time you open the door to get in or out. | Base available in black, orient beige and alpaca grey |

Non-illuminated door sill panels, rear
| not pictured |
Door sill panels in brushed stainless steel



Spectacles box

Universal - adjusts to different sizes of spectacles/sunglasses



Back cushion

Ergonomic, individually adjustable cushion, designed to support the back on long journeys. Available in anthracite

Luxury head restraint cover

For the head restraints. Available in anthracite

Cleanbag

The ideal way to keep the interior clean when you're on the move: the small "Cleanbag" is simply attached to the net in the front passenger footwell

Pedal covers in stainless steel

High-sheen stainless steel pedals with non-slip stud panel. Available for automatic and manual models

Stowage box

Provides extra stowage space below the driver or front passenger seat, away from prying eyes

Leather steering wheel

Multifunction leather steering wheel, available in black

Roller blind, rear side window

The roller blinds are designed for the rear doors. Simple to use and extremely convenient. Provide optimum shade in bright sunlight



- Back cushion*
- Cleanbag*
- Door sill panels*
- Floor mats*
- Leather steering wheel*
- Luxury head restraint cover*
- Pedal covers*
- Roller blinds*
- Seat covers*
- Spectacles box*
- Stowage box*

INTERIOR







Carrier systems

*Load compartment
accessories*

CARGO & CARE

Brawn

The inside of your B-Class offers so many flexible stowage options that you won't often find yourself looking for extra room.

If on occasion, however, you do find that you need to expand outside, you've come to the right place:

the Mercedes-Benz roof-mounted carriers include roof boxes, bicycle racks and snowboards - robust products which provide a secure hold and leave you plenty of space inside your B-Class.



Mercedes-Benz roof boxes

Elegant, aerodynamic design, made for your Mercedes-Benz. High-quality, extremely durable material. Available in two colours: titanium metallic [A] and matt silver [B]

1 | Mercedes-Benz roof box XL
family box | Capacity: approx. 450 litres.
Available with opening on right or left. Optional accessories: luggage set and ski rack insert

2 | Mercedes-Benz roof box L
sports box | Capacity: approx. 330 litres.
Available with opening on right or left. Optional accessories: luggage set and ski rack insert

3 | Mercedes-Benz roof box M
weekend box | Capacity: approx. 400 litres.
Available with opening on right or left



Ski rack insert | for Mercedes-Benz roof box XL |
A secure hold for up to five pairs of skis,
subject to ski geometry

Ski rack insert | for Mercedes-Benz roof box L |
A secure hold for up to three pairs of skis,
subject to ski geometry | not pictured |

Luggage set
| for Mercedes-Benz roof box XL |

Four bags, designed to make perfect use of the space available in the roof box XL. Made from hardwearing, water-repellent polyester. Plus two matching ski bags, each designed to hold max. two pairs of skis. Ski bag also available separately

Luggage set
| for Mercedes-Benz roof box L |
Four bags made from hardwearing,
water-repellent polyester. Tailored to
the dimensions of the roof box L





Basic carrier bars
Luggage sets
Roof boxes
Ski rack inserts
Transport bag

CARGO & CARE

Transport and stowage bag

Robust bag, made from a high-quality nylon fabric. Protects the basic carrier bars and makes it easier to transport them



New Alustyle basic carrier bars

The New Alustyle system opens up a wealth of flexible options when it comes to transporting sports equipment and luggage. Simply combine the New Alustyle basic carrier bars with a variety of different roof-mounted carriers which you can see here and on the following pages. The basic carrier bars are precisely tailored to the body of your B-Class, ensuring the highest degree of safety and optimum aerodynamics



New Alustyle bicycle rack

Depending on the maximum roof load, up to four bicycle racks can be fitted per pair of basic carrier bars. Each bicycle rack can hold one bicycle with a max. frame diameter of 98 mm (circular frame tubes) or 110 x 70 mm (oval frame tubes). The support frame folds down when not in use, reducing drag when travelling without cycles. Cycles can either be attached to the rack once it has been fitted to the roof or before it is fitted | also pictured right |



Adapter
For trailer with
7-pin plug



Trailer coupling

Detachable. Max.
drawbar load: 75 kg

Mercedes-Benz Bikes

These sporty and elegant bikes, with their exclusive Mercedes-Benz design, are suitable for everyday all-round use and for touring. For more detailed information, please see our "Mercedes-Benz Bikes" brochure





Rear-mounted bicycle rack for trailer coupling

The rear-mounted bicycle rack is easy to attach to the trailer coupling. A simple fold-down mechanism means that the load compartment can still be opened. Basic version for two cycles. Lockable. Optional extension available for third cycle



The laden bicycle rack can be pivoted downwards, allowing the load compartment to be opened



When the rear-mounted bicycle rack is unladen, simply fold down the vertical retaining bar to access the load compartment. This function also allows space-saving stowage of the rack when removed

Extension kit for rear-mounted bicycle rack
Allows you to add a third cycle | not pictured |

The convenient design of the Mercedes-Benz bicycle rack allows the cycle to be attached at ground level. The cycle is simply mounted on the rail alongside the vehicle and both are then fitted to the basic carrier bars

Tailgate-mounted bicycle rack
Optimally attuned to the contours of the B-Class, the rack ensures a secure hold. Designed for a maximum of two cycles. Lockable. The innovative two-piece design makes it easier to fit and remove the rack. Cannot be fitted in conjunction with the roof spoiler



Coil locks
Designed to help prevent theft. Available as an option for the bicycle rack

- Adapter
- Bicycle rack
- Coil locks
- Rear-mounted bicycle rack
- Tailgate-mounted bicycle rack
- Trailer coupling

CARGO & CARE



Internal bicycle rack

| for up to two standard cycles, up to max. wheel size of 26" |

The internal bicycle rack protects your cycles from the elements and safeguards them against theft. Supplied with a practical, elegant bag which can be used to secure the removed front wheels in place during your journey. If cycle wheels are larger than 26", we recommend that you test the rack's suitability before purchase



New Alustyle ski and snowboard rack "Standard"

For up to 4 pairs of skis or 2 snowboards. Lockable | pictured right |



New Alustyle ski and snowboard rack "Comfort"

For up to 6 pairs of skis or 4 snowboards. Lockable. Practical pull-out function makes loading and unloading easier | pictured left |





Charger with trickle charge function
With its cutting-edge technology, the Mercedes-Benz charger ensures the longest possible battery life. Available in a 3.6 amp version and a 25 amp version



Box of replacement bulbs
Practical and ready at hand when needed: all the right bulbs for your car. Supplied in protective packaging



Fluorescent jacket
Already compulsory in many countries, the bright orange and yellow fluorescent jackets with reflective stripes are conspicuous even in the dark. Available individually or as a pack of two



Ski bag for interior
For up to four pairs of skis. With carrying strap and straps for attaching to load-securing rings in load compartment

Safety tow rod
2-piece steel rod with patented connector and cotter pin. For trailer couplings and towing eyes. Approved for vehicles with a gross vehicle weight of up to 3.2 t



Box of replacement bulbs
Chargers
Fluorescent jackets
Internal bicycle rack
Ski bag
Ski/snowboard rack
Tow rod

CARGO & CARE



Storage crate

Can be divided into four sections using the adjustable partitioning elements. Ideal for transporting objects you don't want to tip over or slide around. Full functionality only in conjunction with the shallow boot tub

Shallow boot tub

Simple to clean. Non-slip thanks to PP-Flex material. Suitable for transporting foodstuffs



Stowage tray below load floor

Partitioned. Ideal for stowing small items such as the shopping crate or an umbrella. Note: when using the stowage tray, the load floor must be in its upper position

Deep boot tub

The hygienic way to transport objects in the load compartment. Suitable for transporting foodstuffs



Coolbox
black/grey | Hard case with fabric cover featuring pockets for extra items. Cold/hot switch. Capacity: 24 litres. 12V connection. Adjustable carrying strap



Coolbag

black | Fabric outside, plastic liner inside. Outside pockets offer plenty of room for extra items. Capacity: 12 litres. 12V connection. Adjustable carrying strap

Rectifier

Allows the Mercedes-Benz coolbox and the coolbag to be connected to a 230V socket at home



Luggage nets
Available for the floor of the load compartment and the rear bench seat. Prevent lightweight objects from sliding around during your journey. All nets are in pocket format



Boot tubs
Coolbag
Coolbox
Luggage nets
Rectifier
Stowage crate
Stowage tray

CARGO &



Quickpark

Acoustic warning system for the rear, making precision parking much easier and helping to prevent damage to the vehicle when manoeuvring



Partition

Sturdy grille, designed to separate the passenger compartment from the luggage area

Non-slip mat

black | Non-slip mat made from oil and acid-resistant polyester. Designed to fit the contours of the load compartment

Reversible mat

The reversible mat features high-quality velour on one side and non-slip rubber on the other. It helps keep the original floor of the load compartment clean

Luggage-securing feature

Ingenious solution to the problem of luggage sliding around in the load compartment. Attaches securely around the object in question thanks to Velcro fastening





*Luggage-securing feature
Non-slip mat
Partition
Quickpark
Reversible mat
Shopping crate
Tie-down strap*


Tie-down strap

Even heavy objects can be secured
in place easily using this strap

Shopping crate
anthracite | Collapsible
| pictured left |

CARGO & CARE



A high-contrast, black and white close-up photograph of a watch strap and buckle. The strap is made of a textured material, possibly leather or a similar synthetic material, and features a prominent horizontal crease. The buckle is a simple, rectangular metal piece with a central slot. The lighting is dramatic, highlighting the textures and contours of the watch components.

*Mercedes-Benz
Lifestyle Collection*

COLLECTION

Best sellers

B is for B-Class.

The Mercedes-Benz B-Class offers everything you have come to expect of the star brand – in compact format.

B is for beguiling.

Pictured here – a beguiling selection of star-branded extras.



Men's wallet

100% calfskin with embossed grain. Black. Mercedes-Benz star embossed on outside. With 6 slots for credit cards and a clip for notes. Size approx. 11 x 9 cm



CLASSIC belt

For that self-assured look. Soft leather makes this a very special classic

CLASSIC cosmetics bag

A special item for everyday use. This leather cosmetics bag easily accommodates everything you need. One slot pocket on front, two slot pockets inside



Samsonite laptop bag

High performance. The padded laptop compartment is designed to hold notebooks measuring up to 16". The compartment is easy to adapt to the relevant laptop size. Additional compartment with two slot pockets. Black. Made by Samsonite for Mercedes-Benz. W x H x D approx. 44 x 39 x 14 cm



Chrome ballpoint pen

Perfect understatement. The gloss finish of the chromed barrel accentuates its elegant design. Cap features Mercedes-Benz logo. With gift box. Exclusively designed for Mercedes-Benz. Takes standard-sized refills



Model car | 1:18

Available in polar silver and night black

Style watch

Water-resistant to 5 ATM. Date feature. Sandwich-structure dial with luminous underlay. Case made from polished stainless steel with screw back. Hardened mineral crystal. Black leather strap. Stainless steel buckle. Mercedes-Benz engraved on back. Available with black or silver dial



"B" key ring

Key ring with split ring, central element and moveable brass link - with a replica of the letter B as it appears on the tailgate of the car. The fob is virtually nickel-free and plated with high-quality rhodium, giving it a particularly bright silver colour. The high-shine polished finish and the matt links round off the key ring to perfection

- Belt*
- Cosmetics bag*
- Key ring*
- Laptop bag*
- Model car*
- Pen*
- Wallet*
- Watches*

COLLECTION

Genuine accessories for the B-Class

Light-alloy wheels are supplied without tyres, wheel bolts or hub caps.

| Description | p | Item no. |
|---|----|---------------|
| Adapter | 28 | A000 821 1050 |
| Additional interior mirror | 21 | B6 081 8618 |
| All-season floor mats (LHD, complete set, black) | 22 | on request |
| AMG floor mats (LHD, complete set, black) | 10 | B6 003 7102 |
| Audio 5 CD | 16 | on request |
| Audio 20 CD with CD changer | 16 | on request |
| Audio 60 APS with 6-DVD changer | 16 | on request |
| Audio 60 APS without 6-DVD changer | 16 | on request |
| AMG light-alloy wheels | | |
| 17" 5-spoke wheel Style III (sterling silver) (FA/RA) | 18 | B6 003 0012 |
| 18" 5-spoke wheel Style III (titanium silver) (FA/RA) | 18 | B6 003 0016 |
| "B" key ring | 39 | B6 006 0196 |
| "BABY-SAFE plus" child seat (with automatic child seat recognition) | 24 | A000 970 1000 |
| Back cushion | 23 | B6 781 2370 |
| Box of replacement bulbs (ECE) | 34 | A204 580 0010 |

| Description | p | Item no. |
|---|----|---------------|
| Charger (ECE version) 3.6 A | 31 | B6 754 2028 |
| Chrome ballpoint pen | 39 | B6 093 4679 |
| Chrome-look indicator bulbs (ECE) | 10 | A000 580 2410 |
| CLASSIC belt | 18 | B6 095 1935 |
| CLASSIC cosmetic bag | 18 | B6 095 3926 |
| Cleanbag | 23 | B6 781 2376 |
| Coil locks (for New-Addstyle bicycle rack, 3mm, set of 2, common key) | 29 | B6 085 1706 |
| COMAND APS with 6-DVD changer | 16 | on request |
| COMAND APS without 6-DVD changer | 16 | on request |
| Coolbag | 33 | B6 081 8725 |
| Coolbox | 33 | A000 820 4206 |
| Cover for integral child seat | 20 | B6 087 0099 |
| Deep boot tub | 33 | B6 008 0026 |
| "DUO plus" child seat (with automatic child seat recognition) | 20 | A000 970 1100 |
| "DUO plus" child seat (without automatic child seat recognition) | 20 | A000 970 1600 |

| Description | p | Item no. |
|--|----|-------------|
| Europe navigation DVD for COMAND APS | 16 | on request |
| Europe navigation DVDs for Audio 50 APS | 16 | on request |
| Extension kit for 3 rd cycle | 29 | B6 685 1113 |
| Fluorescent jacket (single) | 33 | B6 658 8201 |
| Fluorescent jackets (pack of 2) | 33 | B6 658 8200 |
| High-sheen chromed door handle recesses (set of 4) | 11 | B6 688 1237 |
| High-sheen chromed door handle recesses (set of 2) | 11 | B6 688 1238 |
| High-sheen chromed exterior mirror housings (set) | 11 | B6 688 1258 |
| Hub caps (Roadster design in black) | 08 | B6 647 0201 |
| Hub caps (Roadster design in blue) | 08 | B6 647 0120 |
| Hub caps (star with laurel wreath in royal blue) | - | B6 647 0210 |
| Hub caps (sterling silver with chrome star) | 08 | B6 647 0206 |
| Hub caps (titanium silver with chrome star) | 08 | B6 647 0202 |

| Description | p | Item no. |
|---|----|---------------|
| Illuminated door sill panels (set of 2, front) | 22 | on request |
| Internal bicycle rack | 30 | B6 685 1134 |
| iPod/iPhone holder | 15 | B6 782 4501 |
| incenio designer wheels | | |
| Anchan ¹ 10-spoke wheel 16" (FA/RA) | 06 | B6 647 4511 |
| Bokhan ² 5-twin-spoke wheel 17" (FA/RA) | 07 | B6 647 4513 |
| Bokhan ³ 5-twin-spoke wheel 17" (FA/RA) | 07 | B6 647 4553 |
| Kochab ¹ 12-spoke wheel 16" (FA/RA) | 07 | B6 647 1912 |
| Kochab ³ 12-spoke wheel 16" (FA/RA) | 07 | B6 647 4403 |
| Sadalbari ¹ 5-spoke wheel 18" (FA/RA) | 07 | B6 647 4373 |
| Zaurak ² 7-spoke wheel 17" (FA/RA) | 07 | B6 647 4317 |
| "KID" child seat (with automatic child seat recognition) | 20 | A000 970 1200 |
| "KID" child seat (without automatic child seat recognition) | 20 | A000 970 1700 |
| "KidFix" child seat | 20 | on request |

¹ Finish: sterling silver

² Finish: titanium silver, high-sheen

³ Finish: titanium silver

Genuine accessories for the B-Class

| Description | p | Item no. |
|---|----|---------------|
| Light-alloy wheels | | |
| 5-spoke wheel ¹ 16" (FA/RA) | 08 | B6 647 4491 |
| 5-spoke wheel ² 16" (FA/RA) | 08 | B6 647 4225 |
| 5-spoke wheel ³ 17" (FA/RA) | 08 | B6 647 4272 |
| 5-twin-spoke wheel ¹ 16" (FA/RA) | 09 | B6 647 4224 |
| 5-twin-spoke wheel ² 16" (FA/RA) | 09 | B6 647 4343 |
| 5-twin-spoke wheel ³ 17" (FA/RA) | 08 | B6 647 4546 |
| 10-spoke wheel ¹ 17" (FA/RA) | 08 | B6 647 4251 |
| 10-spoke wheel ² 17" (FA/RA) | 08 | B6 647 4407 |
| | | |
| Leather steering wheel, black | 23 | B6 681 7720 |
| Luggage net, floor of load compartment | 33 | B6 766 0106 |
| Luggage net, rear bench seat | 33 | B6 766 0009 |
| Luggage-securing feature | 34 | B6 684 8220 |
| Luggage set (for MB roof box L) | 26 | B6 687 0095 |
| Luggage set (for MB roof box XL) | 26 | A000 890 0511 |
| Luxury head restraint cover | 23 | B6 798 3205 |
| | | |
| Media Interface consumer cables | 14 | A001 827 7004 |
| Men's wallet | 38 | B6 606 2174 |
| Mercedes-Benz iPod interface Kit (ECE) | 15 | on request |

| Description | p | Item no. |
|---|----|---------------|
| Mercedes-Benz roof box M (titanium metallic, opens on right) | 26 | A000 840 2562 |
| Mercedes-Benz roof box L (titanium metallic, opens on right) | 26 | A000 840 2362 |
| Mercedes-Benz roof box XL (titanium metallic, opens on right) | 26 | A000 840 2762 |
| Mercedes-Benz StreetPilot III | 17 | on request |
| Mobile-phone holders The range is being extended all the time. Please contact your Mercedes-Benz partner for details | 17 | on request |
| Model car 1:18 (polar silver) | 39 | B6 696 2326 |
| Mud flaps (front set) | 09 | B6 652 8230 |
| Mud flaps (rear set) | 09 | B6 652 8253 |
| | | |
| New Alustyle basic carrier bars | 27 | B6 781 2126 |
| New Alustyle bicycle rack | 28 | A000 890 0293 |
| New Alustyle ski and snowboard rack "Comfort" | 30 | B6 685 1703 |
| New Alustyle ski and snowboard rack "Standard" | 30 | B6 685 1702 |
| Non-illuminated door sill panels (set of 2, rear) | 22 | on request |
| Non-slip mat (fitted) | 34 | B6 768 0043 |
| | | |
| Padded play table for integral child seat | 20 | B6 687 0098 |
| Partition (upper) | 34 | B6 766 0095 |
| Pedal covers in stainless steel (non-automatic models) | 23 | B6 647 2161 |
| Pedal covers in stainless steel (automatic models) | 23 | B6 647 2160 |

¹ Finish: sterling silver

² Finish: titanium silver

³ Finish: chrome

| Description | p | Item no. |
|---|----|---------------|
| Quickpark | 14 | B6 782 3823 |
| Rear-mounted bicycle rack for trailer coupling (ECE) | 29 | B6 685 1111 |
| Rectifier | 11 | A000 982 0021 |
| Rep floor mats (LHD, complete set, black) | 22 | B6 635 9157 |
| Reversible mat (black) | 14 | B6 768 0039 |
| Rim locks | 06 | B6 647 0155 |
| Roller blind, rear side window (left) | 23 | B6 669 1340 |
| Roller blind, rear side window (right) | 23 | B6 669 1341 |
| Roof spoiler, primed | 11 | B6 688 1530 |
| Rudmatic-Disc snow chain system (tyres: 185/65 R15 and 195/55 R16) | 09 | B6 758 3006 |
| Safety tow rod | 31 | A000 890 0224 |
| Samsonite laptop bag | 18 | B6 695 4927 |
| Seat covers | 22 | on request |
| Shallow boot tub | 32 | B6 668 0027 |
| Shopping crate | 15 | B6 647 0995 |
| Ski bag for interior | 31 | B6 766 0022 |
| Ski bag (single, for MB roof box L and XL) | 26 | B6 687 0114 |
| Ski rack insert (for MB roof box L) | 26 | A000 840 4710 |
| Ski rack insert (for MB roof box XL) | 26 | A000 840 4818 |

| Description | p | Item no. |
|--|----|---------------|
| Spectacles box | 21 | A000 810 0704 |
| Stowage box below seat | 23 | B6 692 0105 |
| Stowage crate | 32 | A000 814 0041 |
| Stowage tray below load floor | 33 | B6 766 0023 |
| Style watch (black dial) | 39 | B6 606 0186 |
| Style watch (silver dial) | 39 | B6 606 0185 |
| Tailgate-mounted bicycle rack | 29 | B6 685 1109 |
| Tail light | 11 | B6 680 9898 |
| Tie-down strap | 35 | B6 647 2021 |
| Trailer coupling (ECE, detachable) | 28 | B6 685 0061 |
| Transport and stowage bag | 27 | A000 890 0111 |
| Tyre pressure gauge | 07 | B6 658 8140 |
| Valve caps | 08 | B6 647 2001 |
| Vario bag (Alcantara, java) | 21 | A000 899 2061 |
| Vario bag (Angel & Driver) | 21 | A000 899 1861 |
| Vario bag (DaimlerSquare) | 21 | A000 899 1961 |
| Velour floor mats (LHD, complete set, black) | 22 | B6 629 3510 |
| Wheel bolts | 08 | B6 647 0159 |

Please note: changes may have been made to the products since this brochure went to press (02.06.2008). The manufacturer reserves the right to make changes to the design, form, colour and specification during the delivery period, provided these changes, while taking into account the interests of the vendor, can be deemed reasonable with respect to the purchaser. Where the vendor or the manufacturer uses symbols or numbers to describe an order or the subject of an order, no rights may be derived solely from these. The illustrations may show accessories and items of optional equipment which are not part of standard specification. Colours may differ slightly from those shown in the brochure, owing to the limitations of the printing process. This brochure has been compiled by Daimler of Germany and is distributed internationally. It provides a general indication of the range of models, features, optional extras and/or colours available in various countries. Some of the models, features, optional extras and/or colours may not be available in your country or may only be available in a different specification. Additionally some models, features, optional extras and/or colours may only be available in combination with others. For current and more specific information in relation to the range of models, features, optional extras and/or colours available in your country, and their pricing, you should contact your nearest authorised Mercedes-Benz Passenger Car Dealer.