

 **TOYOTA HILUX**
oh what a *feeling!*

HiLux 4x2.
Action Utility Vehicle.





4x2 Single Cab SR model shown.

Power and presence.

The Toyota HiLux is bigger, better and stronger than ever before. It's the versatile ute that is an Action Utility Vehicle (AUV). It's unbreakable workhorse meets off-road action lifestyle! Boasting impressive power across the range, inspiring performance and handling, comfort, and fabled HiLux reliability and dependability, it's got the performance you want and the toughness you've come to expect. Available in three versatile model variations (WorkMate, SR, & SR5), it's the ute of choice for drivers who want it all. So, when the weekend comes, it can trade wheelbarrows for trail bikes and take your weekend into high gear.

Work safe in HiLux.

HiLux is thankfully big on safety as well. It has been designed for outstanding crash performance to the toughest Australian and European standards. You'll breathe easier with dual SRS airbags and pretensioning seatbelts. In addition, ABS brakes are optional on SR and WorkMate models. The HiLux also has an energy absorbing front body/chassis structure and a strong Safe-T-Cell, to help keep the cabin intact during a collision. It's just another way that HiLux will further strengthen its 'unbreakable' reputation.

THE WORLD'S FIRST
AUV
ACTION UTILITY VEHICLE

Front cover: 4x2 Xtra Cab SR5 model shown.

TECHNICAL SPECIFICATIONS HILUX 4x2	SINGLE CAB				XTRA CAB			DOUBLE CAB				
	WorkMate	SR			SR	SR5	WorkMate	SR			SR5	
	Cab Chassis	Cab Chassis		Pickup	Pickup	Pickup	Pickup	Pickup			Pickup	
	Petrol	Petrol	Turbo Diesel	Petrol	Petrol	Petrol	Petrol	Petrol	Turbo Diesel	Petrol		
MECHANICAL								A/T	M/T			
2.7L Twin Cam VVT-i 4 cylinder Petrol engine	S	-	-	-	-	-	S	-	-	-	-	
4.0L V6 Twin Cam VVT-i Petrol engine	-	S	-	S	S	S	-	S	-	-	S	
3.0L EDI Twin Cam Turbo Diesel engine	-	-	S	-	-	-	-	-	S	-	-	
5-Speed Manual Transmission	S	S	S	S	-	-	S	S	S	S	S	
5-Speed Auto Transmission with AI Shift Control	-	0	-	0	S	S	-	0	-	-	0	
DIMENSIONS (*1)												
Overall Length (mm)	4975			5130	5130	5255	5130				5255	
Overall Width (mm)						1760						
Overall Height (mm)	1680				1680		1695					
Wheelbase (mm)	3085			3085			3085					
Track - Front / Rear (mm)	1510			1510			1510					
Ground Clearance (mm)						177						
Overhang - Front	885				885			885				
Overhang - Rear	1005			1160	1160	1160	1160	1160	1285	1160	1160	
Angle of approach	21°				21°			21°				
Angle of departure	20°			20°		18°	20°			18°		
Tray Length (mm)	-			2315	1805			1520				
Tray Width (mm)	-			1520	1515			1515				
Tray Height (mm)	-			450	450			450				
VEHICLE WEIGHTS & CAPACITIES												
Kerb Weight - Manual (kg) (*2)	1450 ~ 1520	1480 ~ 1525	1560 ~ 1620	1490 ~ 1530	-	-	1535 ~ 1580	1565 ~ 1605	1665 ~ 1680	1570 ~ 1605		
Kerb Weight - Automatic (kg) (*2)	-	1510 ~ 1550	-	1520 ~ 1560	1550 ~ 1585	1550 ~ 1600	-	1595 ~ 1630	-	1595 ~ 1635		
Gross Vehicle Mass (kg)	2820		2875	2820	2740		2710					
Max. front axle capacity (kg)	1125		1125	1125	1200		1200					
Max. rear axle capacity (kg)	1750		1750	1750	1695		1550					
Gross Combined Mass (kg) (*3)						4600						
Towing capacity - with trailer brakes (kg) (*4)						2250						
Towing capacity - without trailer brakes (kg) (*4)						750						
Seating capacity - including driver - Manual trans	3	3	3	3	-	-	6	5	5	5		
Seating capacity - including driver - Auto trans	-	2	-	2	4	4	-	5	-	5		
Fuel tank capacity (litres)	76											
STEERING												
Type	Power Assisted Rack and Pinion											
Turning Circle	11.8											
BRAKES												
System	Vacuum boosted hydraulic system											
Front	Ventilated disc brakes											
Rear	Self adjusting drum											
Anti-skid Braking System (ABS)	Option					Standard	Option (*12)	Option			Standard	
SUSPENSION												
Type	Double wishbone type with coil springs, gas filled shock absorbers and stabiliser bar											
Front	Leaf spring type rigid axle with gas filled shock absorbers											
Rear												
WHEELS												
Tyres	195R14C	205/70R15C	205/70R15C	205/70R15C	205/70R15C	205/70R15C	195R14C	205/70R15C	205/70R15C	205/70R15C		
Wheels	5.5Jx14 steel	6.0Jx15 steel	6.0Jx15 steel	6.0Jx15 steel	6.0Jx15 steel	6.0Jx15 alloy (4)*	5.5Jx14 steel	6.0Jx15 steel	6.0Jx15 steel	6.0Jx15 alloy (4)*		
ENGINE												
	4 CYLINDER PETROL				V6 PETROL			TURBO DIESEL				
Name	2TR-FE				1GR-FE			1KD-FTV				
Type	4 Cylinder in-line DOHC with 4 valves per cylinder with Variable Valve Timing with intelligence (VVT-i)				V6 DOHC with 4 valves per cylinder with Variable Valve Timing with intelligence (VVT-i)			4 Cylinder in-line DOHC with 4 valves per cylinder, intercooler and electronic direct injection				
Fuel System	Electronic Fuel Injection				Electronic Fuel Injection			Electronic Direct Injection, Common Rail				
Fuel Type	Unleaded Petrol				Unleaded Petrol (*11)			Diesel				
Displacement (cc)	2694				3956			2982				
Bore and Stroke (mm)	95.0 x 95.0				94.0 x 95.0			96.0 x 103.0				
Compression Ratio	9.6:1				10.0:1			17.9:1				
Max. Power (kW/rpm) (*5)	118 / 5200				175 / 5200			126 / 3600				
Max. Torque (Nm/rpm) (*5)	241 / 3800				376 / 3800 (auto)			343 / 1400-3400				
	343 / 2400-4800 (manual)											
DRIVETRAIN												
	5-Speed Manual Transmission				5-Speed Manual		5-Speed Automatic		5-Speed Manual Transmission			
Gear Ratios	1st gear	3.830			3.830		3.520		4.313			
	2nd gear	2.062			2.062		2.042		2.330			
	3rd gear	1.436			1.436		1.400		1.436			
	4th gear	1.000			1.000		1.000		1.000			
	5th gear	0.838			0.838		0.716		0.838			
	Reverse gear	4.220			4.220		3.224		4.220			
Differential ratio	4.100				3.583		3.583		3.583			
FUEL ECONOMY (*6)												
	4 CYLINDER PETROL				V6 PETROL			TURBO DIESEL				
	Single Cab		Double Cab		Single Cab		Extra Cab	Double Cab		Single Cab		Double Cab
	Cab Chassis		Pickup		Cab Chassis		Pickup	Pickup		Cab Chassis		Pickup
ADR 81/01 Combined (L/100km)	Manual	11.2		11.0	13.0	12.5	-	12.6		8.1		8.1
	Automatic	-		-	12.3	11.7	11.8	11.8		-		-

*Spare steel wheel

IMPORTANT NOTICE - PLEASE READ

Toyota Australia uses its best endeavours to ensure brochure information is correct when published. You must check with your authorised Toyota Dealer when ordering to ensure the vehicle with your chosen specifications, equipment and colour is available and that the vehicle can be delivered within a timeframe suitable to you. When ordering accessories, you must check with your authorised Toyota Dealer to ensure the accessory's design, features and colours are available and will fit your vehicle. Colours displayed in this brochure are a guide only and may vary from actual colours due to printing/display process. Toyota Australia reserves the right to change without notice, at any time, prices, colours, materials, equipment, specifications and discontinuous colours/models. To the full extent allowed by law, Toyota Australia will not be liable for any damage, loss or expense incurred as a result of reliance on this brochure in any way. *All Toyota Genuine Accessories purchased and fitted to a Toyota are warranted for the remainder of the New Vehicle Warranty or 12 months, whichever is greater. Toyota Genuine Accessories purchased from an authorised Toyota Dealer under the counter are warranted from the date of purchase for one year (unlimited kilometres). Conditions apply. All warranties are additional to the implied warranties under the Trade Practices Act 1974. Distributed nationally by Toyota Motor Corporation Australia Limited. ABN 64 009 686 097. Cnr Gannons Rd & Captain Cook Drive, Caringbah, NSW 2229. Part No. TYHILUX2WD05085V. Printed May 2008.

FEATURES	SINGLE CAB			XTRA CAB			DOUBLE CAB		
	Work Mate	WorkMate ABS option	SR	SR	SR5	Work Mate	WorkMate ABS option	SR	SR5
EXTERIOR									
Black polypropylene front bumper	S	S	-	-	-	S	S	-	-
Body Colour front bumper	-	-	S	S	S	-	-	S	S
Chrome step type rear bumper	-	-	-	-	S	-	-	-	S
Step type rear bumper	-	-	-	-	-	-	-	S	-
Body Colour radiator grille	-	-	-	-	S	-	-	-	S
Multi-reflector headlights	S	S	S	S	S	S	S	S	S
Front fog lamps	-	-	-	-	S	-	-	-	S
Laminated windscreen	S	S	S	S	S	S	S	S	S
Tinted side windows	S	S	S	S	S	S	S	S	S
14" Steel wheels with centre ornaments	S	-	-	-	-	S	-	-	-
15" Steel wheels with centre ornaments	-	S(*13)	S	S	-	-	S(*13)	S	-
15" Alloy wheels (4)	-	-	-	-	S	-	-	-	S
Spare steel wheel	S	S	S	S	S	S	S	S	S
Deck guard frame with stopper	-	-	Pickup	S	-	S	S	S	-
Alloy Sports bar	-	-	-	-	S	-	-	-	S
Chrome door handles & mirrors	-	-	-	-	S	-	-	-	S
Front only mudflaps	S	S	C/C	-	-	-	-	-	-
Front & Rear mudflaps	-	-	Pickup	S	S	S	S	S	S
Bonnet Scoop (*7)	S	S	S	S	S	S	S	S	S
Metallic paint	0	0	0	0	0	0	0	0	0
Touch-up paint	S	S	S	S	S	S	S	S	S
INTERIOR									
Vinyl seat trim	S	S	-	-	-	S	S	-	-
Cloth facing seat trim	-	-	S	S	-	-	-	S	-
Full cloth seat trim	-	-	-	-	S	-	-	-	S
Moulded front door trims	S	-	-	-	-	S	-	-	-
Moulded front door trims with cloth inserts	-	S(*13)	S	S	-	-	S(*13)	S	S
Durable vinyl floor covering	S	S	S	S(*13)	-	S	S	S	-
Floor carpet	-	-	-	-	S	-	-	-	S
Seating									
Driver's bucket seat	S	S	S	S	S	S	S	S	S
Front bench passenger seat	S	S	S(*9)	-	-	S	S	-	-
Front passenger bucket seat	-	-	S(*8)	S	S	-	-	S	S
2 person capacity rear jump seat	-	-	-	S	S	-	-	-	-
3 person capacity rear seat with headrests	-	-	-	-	-	S	S	S	S
FEATURES									
Air conditioning - single type	0	0	0	0	S	0	0	0	S
Rotary type heater controls	S	S	S	S	S	S	S	S	S
Power front windows	-	S(*13)	S	S	S	-	-	-	-
Power front and rear windows	-	-	-	-	-	S(*13)	S	S	-
Driver's auto down window	-	S(*13)	S	S	S	-	S(*13)	S	S
Instruments and controls									
Power steering	S	S	S	S	S	S	S	S	S
Manual tilt steering column	S	S	S	S	S	S	S	S	S
Cruise Control (*8)	-	-	S(*13)	S(*13)	S	-	-	S(*13)	S
Optitron combination meter	-	-	-	-	S	-	-	-	S
Multi Information Display including trip computer	-	-	-	-	S	-	-	-	S
Power mirrors	-	-	S(*13)	S(*13)	S	-	-	S(*13)	S
Day/night interior mirror	S	S	S	S	S	S	S	S	S
Power accessory socket	-	-	-	-	S	-	-	-	S
Variable intermittent windscreen wipers	-	-	S	S	S	-	-	S	S
Rear window demister	-	-	-	S	S	S	S	S	S
Automatic transmission indicator in dash (*8)	-	-	-	-	S	-	-	-	S
Automatic transmission shift interlock (*8)	-	-	S	S	S	-	-	-	S
Headlights on - audible warning	S	S	S	S	S	S	S	S	S
Trip meter	S	S	S	S	S	S	S	S	S
Low fuel warning light	S	S	S	S	S	S	S	S	S
Digital clock in dashboard	S	S	S	S	S	S	S	S	S
Lighting									
Door operated dome lamp	S	S	S	S	S	S	S	S	S
Illuminated ignition switch	-	-	S	S	S	-	-	-	S
Front personal lamp	-	-	-	-	S(*13)	-	-	-	S(*13)
Storage									
Large glovebox	S	S	S	S	S	S	S	S	S
Front Cupholder/s - in dash	S	S	S	S	S	S	S	S	S
Front Cupholder/s - in centre console	-	-	S(*8)	S	S	-	-	-	S
Rear Cupholders - in centre console	-	-	-	-	-	-	-	-	S
Drink/bottle holders - in front doors	S	S	S	S	S	S	S	S	S
Drink/bottle holders - in rear doors	-	-	-	-	-	S	S	S	S
Front door pockets	S	S	S	S	S	S	S	S	S
Centre dashboard storage	S	S	S	S	S	S	S	S	S
Centre console box with lid	-	-	S(*8)	S	S	-	-	-	S
Front ashtray and cigarette lighter	S	S	S	S	S	S	S	S	S
Tool kit (small)	S	S	S	S	S	S	S	S	S
Audio									
AM/FM radio with MP3 compatible single disc CD player	S	S	S	S	S	-	-	S	-
AM/FM radio with MP3 compatible 6 disc in-dash CD changer	-	-	-	-	S	-	-	-	S
Audio Input compatible with iPod [®] or other portable MP3 players [†]	S	S	S	S	S	S	S	S	S
Bluetooth [™] hands-free telephone capability	-	-	-	-	S	-	-	-	S
Number of speakers	2	2	2	2	4	2	2	2	4

FEATURES	SINGLE CAB			XTRA CAB			DOUBLE CAB		
	Work Mate	WorkMate ABS option	SR	SR	SR5	Work Mate	WorkMate ABS option	SR	SR5
FEATURES cont.									
Audio cont.									
Manual antenna in A-Pillar	S	S	S	S	S	S	S	S	S
Security coded radio	S	S	S	S	S	S	S	S	S
SAFETY									
Anti-skid Braking System (ABS)	0	0	0	0	S	0(*12)	0(*12)	0	S
Driver and front passenger SRS airbags	S	S	S	S	S	S	S	S	S
Driver's seatbelt warning lamp	S	S	S	S	S	S	S	S	S
Driver's pre-tensioner seatbelt	S	S	S	S	S	S	S	S	S
Front passenger pre-tensioner seatbelt (*10)	S	S	S	S	S	S	S	S	S
Front centre seat lap seatbelt	S	S	S(*9)	-	-	S	S	-	-
Lap/sash seatbelts for rear outer seating positions	-	-	-	-	S	S	S	S	S
Lap type seat belt for rear centre seat position	-	-	-	-	-	S	S	S	S
Door ajar warning light	S	S	S	S	S	S	S	S	S
High mount centre rear stop lamp	-	-	Pickup	S	S	S	S	S	S
Front door anti-intrusion beams	S	S	S	S	S	S	S	S	S
Collapsible steering column	S	S	S	S	S	S	S	S	S
SECURITY									
Engine immobiliser	S	S	S	S	S	S	S	S	S
Power door locks	-	S(*13)	S	S	S	-	-	S(*13)	S
Remote keyless entry	-	-	S	S	S	-	-	-	S
Lockable Glovebox	S	S	S	S	S	S	S	S	S
Remote fuel door release	-	-	Pickup	S	S	S	S	S	S
Fuel cap holder tether	-	-	Pickup	S	S	S	S	S	S
Locking fuel cap	S	S	C/C	-	-	-	-	-	-
ACCESSORIES - Dealer fit, available at extra cost*									
Towbar with & without Rear Step									
2250 kg (braked) (*4)	D/F	D/F	D/F	D/F	D/F	D/F	D/F	D/F	D/F
Towbar 1200 kg (braked) (*4)	D/F	D/F	D/F	D/F	-	D/F	D/F	D/F	-
Steel Bull Bar Overbumper Style - Airbag compatible									
Alloy Nudge Bar - Airbag compatible	D/F	D/F	D/F	D/F	D/F	D/F	D/F	D/F	D/F
Driving Lights (for fitment to Bull and Nudge Bars)	D/F	D/F	D/F	D/F	D/F	D/F	D/F	D/F	D/F
Traybodies - Alloy and Steel, wide range of options									
Hard Tonneau Cover (colour matched) - Pickup Only	-	-	-	D/F	D/F	-	-	-	D/F
Soft Tonneau Cover - Pickup Only	-	-	-	D/F	D/F	D/F	D/F	D/F	D/F
Roof Racks - 2 bar set	-	-	-	-	-	D/F	D/F	D/F	D/F
Bonnet Protector, Headlamp Covers and Weathershields									
Fabric Seat Covers	D/F	D/F	D/F	D/F	D/F	D/F	D/F	D/F	D/F
Canvas Seat Covers	D/F	D/F	D/F	D/F	-	D/F	D/F	D/F	-
High and Low Roof Canopy	-	-	-	-	-	D/F	D/F	D/F	D/F
Ute Liner	-	-	-	-	-	D/F	D/F	D/F	D/F
All Weather Rubber Floor Mats	D/F	D/F	D/F	D/F	D/F	D/F	D/F	D/F	D/F
All Weather Rubber Ute Mat	-	-	-	D/F	D/F	D/F	D/F	D/F	D/F
6 in-dash MP3 Compatible CD Changer and Radio with Bluetooth[™] Handsfree Communications & Auxiliary Audio Input									
Satellite Navigation Audio System ^{^^} - Includes 4 in-dash MP3 CD Changer & Radio with Bluetooth [™] Handsfree Communications	D/F	D/F	D/F	D/F	D/F	D/F	D/F	D/F	D/F
FollowMe Sound and Navigation System ^{^^} - Includes single in-dash MP3 CD Changer and Radio with Bluetooth [™] Handsfree Communications, USB in and (optional) iPod [®] control	D/F	D/F	D/F	D/F	D/F	D/F	D/F	D/F	D/F
Key									
S = Standard, - = Not available, 0 = Option available at extra cost, O/P = Option pack available at extra cost.									
D/F = Dealer fit option available at extra cost.									
Pickup = Standard on Pickup models, C/C = Standard on Cab Chassis models.									
Note: Options may only be available in combination with others, please see your Dealer for details.									
Options - Available at extra cost									
*1 = Some vehicle dimension figures are approximate and may vary due to options and accessory fitment.									
*2 = Kerb weights are nominal and will vary depending on options, accessories or tray or body type.									
*3 = Gross Combined Mass (GCM) is the total permissible combined weight of the vehicle and trailer/caravan being towed including occupants, fuel & cargo.									
*4 = Towbar capacity subject to regulatory requirements, towbar design, vehicle design and towing equipment limitations.									
*5 = Power and torque test standards differ. Ensure comparisons use same test standard. V6 engine based on 95+ RON.									
*6 = Fuel economy varies with driving conditions and style, vehicle condition, options and accessories.									
*7 = Turbo Diesel engine only.									
*8 = Automatic transmission model only.									
*9 = Manual transmission model only.									
*10 = Not fitted to front centre lap seatbelt.									
*11 = RON 91 or higher. For improved vehicle performance, the use of premium unleaded petrol with a RON of 95 or higher is recommended.									
*12 = Anti-skid Braking System (ABS) is available only in combination with step type rear bumper.									
*13 = Available from August 2007 Production.									
† = The Bluetooth word mark is owned by Bluetooth SIG, Inc. Bluetooth [™] will only operate with telephones enabled with compatible Bluetooth [™] wireless technology HFP (Hands Free Profile) v1.0 and OPP (Object Push Profile) v1.1 international standards.									
^ = Available from January 2007 Production.									
^^ = Current navigation mapping database encompasses major capital and primary national road networks as well as offering some coverage in regional areas.									
◇ = Optional FollowMe iPod [®] kit available. iPod [®] is a registered trademark of Apple Inc.									
# = iPod is a registered trademark of Apple Inc.									



SR5 Model shown.

The HiLux Range.

WorkMate

With more spacious cabins than ever before in a HiLux, you can step in and stretch out in the WorkMate. It's also got more power than ever to haul heavy loads, carry all your gear to the worksite or tow jetskis to the beachside.

SR

This HiLux is a real trooper. With a big V6 or powerful turbo diesel it's a tireless worker. With even more creature comforts it's also easier to live in and feel completely at ease while behind the wheel. But deep down, the SR is a hard worker that never grumbles and is always kind to the boss.

SR5

This one's got many of the comfort features of a car, with the work ethics of HiLux. Live life to the full with the power of a big 4.0 litre V6. The interior features an MP3 compatible 6 disc audio with Bluetooth™†, leather steering wheel and remote central locking. So you can pick up clients by day, then impress the girlfriend on weekends – the SR5 is the ultimate weekday workhorse and weekend escape vehicle.

† The Bluetooth word mark is owned by Bluetooth SIG, Inc. Bluetooth™ will only operate with telephones enabled with compatible Bluetooth™ wireless technology (HFP [Hands Free Profile] v1.0 and OPP [Object Push Profile] v1.1 international standards). Available from January 2007 Production.

Colour guide.



Glacier White
(040)



Sterling Silver*
(1C0)



Ink*
(209)



Velocity Red^
(3E5)



Dusty Grey*
(4P9)



Charcoal Grey*
(1E9)



Green Aspen*
(6S3)



Cascade Blue*
(8P4)

TOYOTA SERVICE ADVANTAGE CUTS NEW CAR RUNNING COSTS

Toyota Service Advantage makes owning your HiLux® even more economical because you are now entitled to low cost scheduled servicing capped for up to 6 standard services during the first three years or 60,000km, whichever occurs first. Terms and conditions apply. See your Toyota Dealer or advantage.toyota.com.au for eligibility, pricing and more information. Toyota Service Advantage pricing represents the maximum amount payable for standard scheduled servicing which is as per 'maintenance for normal operating conditions' outlined in the Warranty & Service Handbook's service schedule. Service plan eligibility excludes Government and rental vehicles and certain other exclusions apply.



Note: Toyota Australia reserves the right to vary and discontinue from time to time the interior and exterior colours, trims and colour/trim/model combinations currently available. Colours and trims displayed here are a guide only and may vary from actual colours due to printing/display process. See your Toyota Dealer to confirm colour/trim/model availability when ordering your vehicle. *Indicates mica, metallic or pearlescent paint which is available at extra cost. ^Available from August 2007 Production.

#Toyota Service Advantage effective from April 2008 compliance plate vehicles and onwards.



Get it on and go your own way.

4x2 Xtra Cab SR5 Utility shown is accessorised with Alloy Nudge Bar, Hard Tonneau Cover, All Weather Rubber Ute Mat, Weathershields, Fabric Seat Covers, Headlamp Covers, Bonnet Protector and Tailored All Weather Rubber Floor Mats.

THESE ARE JUST SOME OF THE ACCESSORIES AVAILABLE FOR YOUR HILUX. FOR A COMPLETE LIST AND FURTHER DETAILS, PLEASE SEE YOUR TOYOTA DEALER OR REFER TO OUR WEBSITE.



ALLOY TRAY BODY WITH OPTIONAL REAR RACK AND ALLOY WINDOW PROTECTOR FITTED



CANOPY (HIGH ROOF)



UTE LINER AND TAILGATE LINER



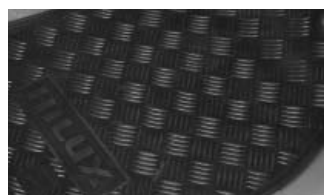
TOWBAR WITH REAR STEP (2250kg Braked)* TOWBALL AND TRAILER WIRING HARNESS (SOLD SEPARATELY)



CANVAS SEAT COVERS



ALLOY NUDDGE BAR - AIRBAG COMPATIBLE



ALL WEATHER RUBBER FLOOR MATS FRONT AND REAR AVAILABLE (SOLD SEPARATELY)



STEEL BULL BAR - OVERBUMPER STYLE AIRBAG COMPATIBLE



HARD TONNEAU COVER



SOFT TONNEAU COVER



FOLLOWME SOUND AND NAVIGATION SYSTEM* - INCLUDES SINGLE IN-DASH MP3 CD CHANGER AND RADIO WITH BLUETOOTH™† HANDSFREE COMMUNICATIONS, USB IN AND (OPTIONAL) IPOD® CONTROL‡



SATELLITE NAVIGATION AUDIO SYSTEM* - INCLUDES 4 IN-DASH MP3 CD CHANGER AND RADIO WITH BLUETOOTH™† HANDSFREE COMMUNICATIONS



6 IN-DASH MP3 COMPATIBLE CD CHANGER & RADIO WITH BLUETOOTH™† HANDSFREE COMMUNICATIONS & AUXILIARY AUDIO INPUT



AUDIO CABLE AND CAR CHARGER FOR IPOD®

TOYOTA GENUINE ACCESSORIES ARE COVERED BY OUR TOYOTA WARRANTY‡

Some Toyota Genuine Accessories are not applicable to all HiLux models. See your Toyota Dealer for advice regarding Toyota Genuine Accessories. Pictured Accessories are all sold separately. For a comprehensive guide on the entire range of Toyota Genuine Accessories, visit our website at accessories.toyota.com.au.

‡All Toyota Genuine Accessories purchased and fitted to a Toyota are warranted for the remainder of the New Vehicle Warranty or 12 months, whichever is greater. Toyota Genuine Accessories purchased from an authorised Toyota Dealer over the counter are warranted from the date of purchase for one year (unlimited kilometres). Conditions apply. All warranties are additional to the implied warranties under the Trade Practices Act 1974.

*Towbar capacity subject to regulatory requirements, towbar design, vehicle design and towing equipment limitations. †The Bluetooth word mark is owned by Bluetooth SIG, Inc. Bluetooth™ will only operate with telephones enabled with compatible Bluetooth™ wireless technology HFP (Hands Free Profile) v1.0 and OPP (Object Push Profile) v1.1 international standards. *Current Navigation mapping database encompasses major capital and primary national road networks, as well as offering some coverage of regional areas. †Available on selected models where AUX-In option is part of audio unit. Suits iPod® models that have a dock connector. Refer to your Apple iPod® Instruction Manual. iPod® is a registered trademark of Apple Inc. This accessory is not a Toyota Genuine Accessory (supplier branded) and is warranted for 12 months from the date of purchase. This warranty is additional to the implied warranties under the Trade Practices Act 1974. ‡Optional FollowMe iPod® kit available. iPod® is a registered trademark of Apple Inc.