



## IMPORTANT!

This brochure has been compiled by Daimler AG of Germany or one of its Group Companies to provide a general indication only of the range of vehicles, optional extras (for example satellite navigation systems, interface and telecommunication kits), accessories, merchandise and/or products (together, the range is known as the “Products”) available in various countries. Some of the Products shown may not be available in Australia, or may only be available in a different specification. Additionally, some Products may only be available in combination with others. Colours may differ slightly from those shown in the brochure, owing to the limitations of the printing process. Products available while stocks last. Changes may have been made to the Products since this brochure was printed. The information in this brochure is therefore indicative, illustrative and provided only for guidance and should not be relied upon. For current information on the availability, design, features and prices of Products available in Australia you should contact your local authorised Mercedes-Benz Dealer.

Mercedes-Benz



Mercedes-Benz

Genuine accessories for the GL-Class



## CONTENTS

### EXTERIOR

*Light-alloy wheels | Wheel accessories | Styling accessories* \_\_\_\_\_ **04**

### TELEMATICS

*iPod integration | Navigation | Telephony* \_\_\_\_\_ **12**

### INTERIOR

*Interior appointments | Child safety* \_\_\_\_\_ **18**

### CARGO & CARE

*Carrier systems | Load compartment accessories* \_\_\_\_\_ **24**









1 ▶

◀ 3

▲ 4

*Light-alloy wheels*  
*Styling accessories*  
*Wheel accessories*

# EXTERIOR



## Good looks

The GL-Class is a vehicle that oozes style. And when it comes to interpreting its good looks in a highly individual way you have plenty of choices.

Genuine accessories from Mercedes-Benz add eye-catching highlights: our range of exclusive **incenio** designer wheels extends to an impressive 20" size – in high-sheen silver or the latest two-tone look, depending on your preference.

Good looks begin with GL.

### Tomeko | 10-spoke wheel

**incenio** designer wheel

Finish: two-tone

Wheel: 8.5 J x 20 ET 56 | Tyre: 275/50 R20  
B6 647 4528

On all light-alloy wheels, use wheel bolt B6 647 0161 and the corresponding rim lock B6 647 0156

Light-alloy wheels are supplied without tyres, wheel bolts or hub caps

### Tyre pressure gauge

Compact design. Saves readings. Suitable for all tyre valves (including cycle tyres). Keeping tyres at the optimum pressure saves fuel and reduces tyre wear. Supplied with leather pouch







**Perim | Multi-spoke wheel**

**incenio** designer wheel

Finish: two-tone (see pages 04/05) or titanium silver, high-sheen (left)

Wheel: 8.5 J x 19 ET 56 | Tyre: 275/55 R19

Two-tone finish: B6 647 4568

Titanium silver, high-sheen finish: B6 647 4567



**Rim locks**

Set consisting of coded key and one lock per wheel

**Valve caps**

**Wheel bolts**  
| not pictured |



**incenio** designer wheels

*Rim locks*

*Tyre pressure gauge*

*Valve caps*

*Wheel bolts*

**Recheo | 5-spoke wheel**

**incenio** designer wheel

Finish: two-tone (see front page) or titanium silver, high-sheen (below)

Wheel: 8.5 J x 20 ET 56 | Tyre: 275/50 R20

Two-tone finish: B6 647 4570

Titanium silver, high-sheen finish: B6 647 4569

**Merem | 5-spoke wheel**

**incenio** designer wheel

Finish: two-tone (see below) or titanium silver, high sheen (below right)

Wheel: 8.5 J x 20 ET 56 | Tyre: 275/50 R20

Two-tone finish: B6 647 4566

Titanium silver, high sheen finish B6 647 4565



**EXTERIOR**



### 5-spoke wheel

Finish: titanium silver

Wheel: 8 J x 18 ET 53

Tyre: 265/60 R18

B6 647 4564



### 5-spoke wheel

Finish: titanium silver

Wheel: 8.5 J x 19 ET 56

Tyre: 275/55 R19

B6 647 4219



### 5-spoke wheel

Finish: tremolite metallic, high-sheen

Wheel: 8.5 J x 20 ET 56

Tyre: 275/50 R20

B6 647 0166



### 5-spoke wheel

Finish: titanium (pictured above) silver or himalayas mid grey (not pictured)

Wheel: 8.5 J x 20 ET 56

Tyre: 275/50 R20

Titanium silver finish: B6 647 0129

Himalayas mid grey finish: B6 647 0165

### Mud flaps

Protect the underbody and the sides of the car from loose chippings and dirt. For front and rear axles



### Snow chain systems

The RUD-matic snow chain has a user-friendly design and can be fitted and removed quickly. With extra-reinforced chain links for the toughest conditions and excellent traction on snow and ice, it is a reliable companion on wintry roads. Your Mercedes-Benz partner will be happy to advise you on this and other snow chain systems | not pictured |

### Hub caps

Protect the hub from dirt. Available in the following versions:

- 1 | Classic Roadster design in blue
- 2 | Classic Roadster design in black
- 3 | Sterling silver with chrome star
- 4 | Titanium silver with chrome star

### AMG 5-spoke wheel | Style VI

Finish: silver, high-sheen

Wheel: 10 J x 21 ET 37 | Tyre: 295/40 R21

B6 603 1070



### 5-twin-spoke wheel

Finish: titanium silver

Wheel: 8.5 J x 20 ET 56 | Tyre: 275/50 R20  
B6 647 0131

On all light-alloy wheels, use wheel bolt B6 647 0161 and the corresponding rim lock B6 647 0156

Light-alloy wheels are supplied without tyres, wheel bolts or hub caps

*AMG light-alloy wheels*

*Hub caps*

*Mercedes-Benz  
light-alloy wheels*

*Mud flaps*

*Snow chains*

# EXTERIOR





**High-sheen chromed exterior mirror cover**  
 Round off your GL-Class's chrome finish and protect the paintwork from scratches. Available as a 4-piece set



**Running board with rubber studs**  
 A functional addition to your GL-Class. Aluminium-effect panel with non-slip rubber studs

- Door handle recesses*
- Exterior mirror cover*
- Fin attachments*
- Indicator bulbs*
- Running board*

**Fin attachments for bonnet**  
 High-sheen chromed. Available as a 6-piece set

**High-sheen chromed door handle recesses**  
 Round off your GL-Class's chrome finish and protect the paintwork from scratches. Available as a 4-piece set



**Chrome-look indicator bulbs**  
 Mirrored indicator bulbs round off the chrome finish of your GL-Class to perfection | standard equipment pictured above |



# EXTERIOR





*iPod® integration*  
*Navigation*  
*Telephony*

# TELEMATICS

# Great listening

Listen to all those favourites you have saved on your iPhone, your iPod or another MP3 player via your in-car audio system – with the iPod Interface Kit.

You can even watch videos on the COMAND system screen with the aid of the Media Interface video cable – although only, of course, when the car is stationary – so there's nothing to spoil that genuine feel-good factor.

## Media Interface video cable<sup>1</sup>

Transforms your Mercedes-Benz into a cinema: the Media Interface video cable allows various video sources (e.g. camcorder, iPod video, iPhone, video players produced by various manufacturers, etc.) to be connected to the Media Interface via AUX. The videos are played on your COMAND APS monitor when the vehicle is stationary. (Only in conjunction with Media Interface, Code 518)



<sup>1</sup> Does not support your iPhone's phone function. Please contact your Mercedes-Benz partner for details of other function restrictions



## Mercedes-Benz iPod® Interface Kit<sup>2</sup>

It's easy to control your iPod via the multifunction steering wheel: scroll through the menus [A], adjust the playback and volume [B] and display the title of your choice in the instrument cluster [C].

The iPod is connected and charged in the glove compartment, where it is hidden from prying eyes. No factory-fitted optional extra required

## Mercedes-Benz iPod® Interface Kit, Video<sup>2</sup>

Like the iPod Interface Kit, offers straightforward control of your iPod. Videos are played on the COMAND display (when vehicle is stationary only). Only in conjunction with COMAND (Code 527 or Code 512)



## iPod/iPhone holder<sup>3</sup>

Black plastic holder for the glove compartment. Holds your iPod in place. Soft, flock surface protects the player from scratches and prevents it sliding around

<sup>2</sup> The Mercedes-Benz Interface Kit allows you to listen to the music or watch the videos saved on your iPhone (videos with Video kit only). It does not support the phone function

<sup>3</sup> For details and a list of supported devices, please contact any Mercedes-Benz service outlet



## Mobile-phone holders

When it comes to selecting a mobile for your Mercedes-Benz, you've never had so much choice. One "click" is all it takes to replace the mobile-phone holder. It takes a matter of seconds and is as straightforward as inserting the mobile into the holder itself.

### Further advantages of the mobile-phone holders:

- Optimum reception quality as a result of using vehicle's external aerial
- Mobile's battery is charged
- Access to phone's memory
- Convenient operation using multifunction steering wheel

To use a mobile-phone holder, your car must be factory-fitted with optional extra **Code 386, Convenience Telephony**

*To find out more about the mobile-phone holders and functions available for your mobile, go to [www.mercedes-benz.com/connect](http://www.mercedes-benz.com/connect), or contact your Mercedes-Benz partner*



## Mercedes-Benz Bluetooth® telephone module

The telephone module is designed to extend the mobile communication system in your Mercedes-Benz. Just connect it to your Convenience Telephony system (Code 386) in the centre armrest, and start using your mobile via the on-board hands-free system. You can leave your mobile phone in your jacket pocket.

- Access to contact details saved on SIM card
- Optimum reception quality as a result of using vehicle's external aerial
- Read and receive text messages
- The closed box features an integral USB port which can be used to charge the mobile phone

Two versions of the Mercedes-Benz Bluetooth SAP<sup>4</sup> telephone module are available: one in the form of a closed box [A] and the other with a corded handset [not pictured]. Both versions feature a SIM card reader. Contact your Mercedes-Benz partner for details of the handset's compatibility

Holders are available for various current models of mobile phone:

- 1 | Nokia (3109, 3110, 6300, 6500 Classic, E71, E66)
- 2 | Sony Ericsson (K770i, T650i, C902, C702)
- 3 | Apple (iPhone, 3G)
- 4 | BlackBerry (8300, 8310, 8320, 8900, 9000)



<sup>4</sup> SAP (SIM Access Profile) allows the module to read your mobile phone's SIM card

*Mobile-phone holders  
Bluetooth telephone module  
iPod Interface Kit  
iPod Interface Kit, Video  
iPod/iPhone holder  
Media Interface video cable*

# TELEMATICS



#### **Rear Seat Entertainment System<sup>1</sup>**

The powerful DVD system delivers optimum entertainment to rear-seat passengers without disturbing the driver or impeding rear vision. Passengers can watch DVDs on the 8" colour displays or connect up a games console. Sound is output via infrared or corded headphones or your car's audio system. External video sources can be connected via the AUX input. The option of separate video playback on the two monitors allows both rear passengers to select their own individual entertainment

#### **Audio 20 CD with 6-CD changer**

Double-tuner radio with 5" colour display. Bluetooth interface with hands-free function and MP3-compatible CD changer. Can be operated via the multifunction steering wheel | not pictured |

<sup>1</sup> Only in conjunction with pre-installation for Rear Seat Entertainment (Code 866)

**Rediscover navigation.** In recent years integral navigation has made journeys more relaxed, less time-consuming and, above all, safer. If you want to continue to enjoy these advantages to the full, we recommend that you regularly replace the navigation DVD in your navigation system with the latest version. Ensuring that the data you're using matches the roads you're travelling on. And that the only surprises you encounter during your journey are of a pleasant nature



Audio 20 CD  
Audio 50 APS  
COMAND APS  
Navigation DVDs

Rear Seat  
Entertainment System

SD memory card



#### SD memory card

The COMAND APS in your GL-Class features a slot for SD memory cards. Use the SD memory card as a convenient way to play music



Europe navigation DVD  
for Audio 50 APS

Europe navigation DVD  
for COMAND APS

#### COMAND APS with 6-DVD changer

The new COMAND APS now offers even more convenience and freedom when you're on the move: your route is navigated with impressive speed, thanks to the integral hard drive. Up to 6 GB of memory offers virtually unlimited space for your favourite music. COMAND APS also plays back music from DVDs and CDs, and from SD memory cards. And the optional Media Interface (see page 14) also allows you to connect your portable music player. For convenience and enhanced safety, all of these functions can be controlled via your COMAND system. Other features: Bluetooth® connectivity, 7" colour display, dynamic route guidance (RDS/TMC), double-tuner radio with 4-channel amplifier for outstanding sound, DVD changer controls. Also available without DVD changer as an option



#### Audio 50 APS with 6-DVD changer

Navigation system and car hi-fi combined in one unit which can be operated via the multifunction steering wheel. Dynamic route guidance via RDS/TMC. Navigation arrows shown on 5" colour display. Bluetooth connectivity for automatic transfer of contacts, with hands-free function as standard. Double-tuner radio with 4-channel amplifier for outstanding sound. DVD changer controls. Also available without DVD changer as an option

TELEMATICS





*Child safety*  
*Interior appointments*

# INTERIOR



#### Back cushion

Ergonomic, individually adjustable cushion, designed to support the back on long journeys. Available in anthracite



#### Cleanbag

The ideal way to keep the interior clean when you're on the move: the small "Cleanbag" is simply attached to the net in the front passenger footwell



#### Coat hanger

Robust coat hanger made from chromed metal and plastic. Easy to fit to the front head restraints. The ideal way to transport items of clothing without creasing them

## Genuine luxury

The distinctive blue light of the illuminated door sill panels lets you know you've arrived before your journey has even begun.

The feel of the wood/leather steering wheel in your hands adds to the sensation. Welcome on board.

- 1 | CLASSIC velour floor mats
- 2 | CLASSIC all-season floor mats
- 3 | CLASSIC rep floor mats

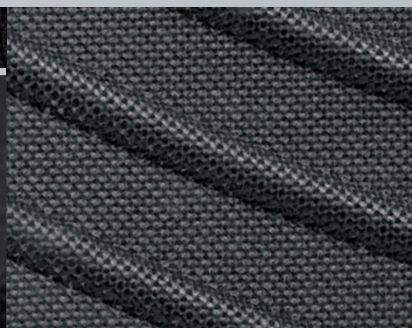
Durable, hardwearing materials. Available in various colours to match the interior. Can be clip-fastened to the floor of the vehicle to prevent slipping

#### EXCLUSIV all-season floor mats

The alternative to the standard all-season floor mats, with integral textile component. High-quality textile character with unchanged functionality when it comes to protecting the interior of your vehicle. Available in black

#### AMG floor mats

Velour, anthracite, with embroidered AMG lettering



#### Wood/leather steering wheel

poplar | black

The wood/leather steering wheels are also available in other colours to match the interior





- AMG floor mats*
- Back cushion*
- Cleanbag*
- Coat hanger*
- Door sill panels*
- Floor mats*
- Spectacles box*
- Wood/leather steering wheel*

#### **Illuminated door sill panels**

The blue illuminated Mercedes-Benz lettering is activated every time you open the door to get in or out. These illuminated door sill panels, in ground stainless steel, are a further "highlight" of the GL-Class

#### **Spectacles box**

Universal - adjusts to different sizes of spectacles/sunglasses



# INTERIOR



*Mercedes-Benz child seats are available with automatic child seat recognition as an option. If your car also has automatic child seat recognition, the technology automatically deactivates the front passenger airbag when a child seat with automatic child seat recognition is installed on the front passenger seat.*

*All child seats are also suitable for use in vehicles without ISOFIX attachment points*

#### **“KidFix” child seat**

Booster seat for optimum side-impact protection, with height-adjustable backrest. The “KidFix” seat can be attached using the 3-point seat belt and ISOFIX attachment points. Available with automatic child seat recognition as an option. For children between the ages of around 3.5 and 12 (15 to 36 kg). Removable, washable “DaimlerSquare” cover





#### Vario bag

Plenty of extra space for the really important things in life. Available in three designs: “DaimlerSquare” fabric (pictured), “Angel & Driver” fabric and Alcantara, java fabric



#### Additional interior mirror

Designed to help you keep an eye on what’s going on in the rear of the car. This practical product, made from shatterproof safety glass, is simple to snap into place

*Additional interior mirror*

*Child seats*

*Vario bag*



#### “DUO plus” child seat

Optimum safety for children between the ages of around 8 months and 4 years (9 to 18 kg). Fitted as standard with top tether, an additional belt for securing the head section, a height-adjustable shoulder belt and ventilation channels. With ISOFIX attachment points. Adjustable tilt. Available with automatic child seat recognition as an option. Removable, washable “DaimlerSquare” cover



#### “BABY-SAFE plus” child seat

Deep, moulded seat design offers extra side-impact protection for optimum safety. Special padding, designed to protect particularly vulnerable body areas of children up to around 15 months (up to 13 kg). Removable, washable “DaimlerSquare” cover. With automatic child seat recognition as standard

# INTERIOR



*Carrier systems*  
*Load compartment accessories*

# CARGO & CARE



# Green light

Often it's the little things that have the biggest effect. Detailed solutions that work perfectly can make that crucial difference to the overall product.

The accessories shown here for your Mercedes-Benz are immaculately designed down to the smallest detail, making them ready for any challenge.

Giving the green light to all your leisure activities.

## Crossbars

Robust yet attractive: the crossbars offer a secure hold for the New Alustyle ski and snowboard rack and the Mercedes-Benz roof boxes. And even when unladen they accentuate the individual, sporty look of your GL-Class. The crossbars are available in black or with a high-sheen chromed finish to match your roof rails



**Transport and stowage bag**  
*For crossbars and New Alustyle basic carrier bars*  
Robust bag, made from a high-quality nylon fabric.  
Protects the basic carrier bars or crossbars



*To transport cycles on the roof,  
please use New Alustyle basic carrier  
bars (see page 28)*

### Mercedes-Benz roof boxes

Elegant, aerodynamic design, made for your Mercedes-Benz. High-quality, extremely durable material. Available in two colours: titanium metallic [A] and matt silver [B]

#### 1 | Mercedes-Benz roof box XL

family box | Capacity: approx. 450 litres. Available with opening on right or left. Optional accessories: luggage set and ski rack insert

#### 2 | Mercedes-Benz roof box L

sports box | Capacity: approx. 330 litres. Available with opening on right or left. Optional accessories: luggage set and ski rack insert

#### 3 | Mercedes-Benz roof box M

weekend box | Capacity: approx. 400 litres. Available with opening on right or left



#### Luggage set

| for Mercedes-Benz roof box XL |

Four bags, designed to make perfect use of the space available in the roof box XL. Made from hardwearing, water-repellent polyester. Plus two matching ski bags, each designed to hold max. two pairs of skis. Ski bag also available separately



#### Luggage set

| for Mercedes-Benz roof box L |

Four bags made from hardwearing, water-repellent polyester. Tailored to the dimensions of the roof box L



#### Ski rack insert

| for Mercedes-Benz roof box XL |

A secure hold for up to five pairs of skis, subject to ski geometry. For Mercedes-Benz roof box XL

#### Ski rack insert

| for Mercedes-Benz roof box L |

A secure hold for up to three pairs of skis, subject to ski geometry. For Mercedes-Benz roof box L | not pictured |

*Crossbars  
Luggage set  
Roof boxes  
Ski rack insert  
Transport bag*

# CARGO & CARE



**New Alustyle ski and snowboard rack "Standard"\***

*For crossbars and New Alustyle basic carrier bars*

For up to 4 pairs of skis or 2 snowboards. Lockable

**New Alustyle basic carrier bars**

*Suitable for all roof-mounted carriers*

Used in conjunction with other roof accessories, the New Alustyle system opens up a wealth of flexible options when it comes to transporting sports equipment and luggage. The basic carrier bars also ensure the highest degree of safety and aerodynamics

**New Alustyle ski and snowboard rack "Comfort"\***

*For crossbars and New Alustyle basic carrier bars*

For up to 6 pairs of skis or 4 snowboards. Lockable. Practical pull-out function makes loading and unloading easier

*\*Ski and snowboard rack "Comfort" in conjunction with adapter B6 687 0115. No adapter required for "Standard" version*





### **New Alustyle bicycle rack**

*Can only be fitted to basic carrier bars*

Depending on the maximum roof load, up to four bicycle racks can be fitted per pair of basic carrier bars. Each bicycle rack can hold one bicycle with a max. frame diameter of 98 mm (circular frame tubes) or 110 x 70 mm (oval frame tubes). The support frame folds down when not in use, reducing drag when travelling without cycles. Cycles can either be attached to the rack once it has been fitted to the roof or before it is fitted | also pictured right |

*The convenient design of the Mercedes-Benz bicycle rack allows the cycle to be attached at ground level. The cycle is simply mounted on the rail alongside the vehicle and both are then fitted to the basic carrier bars*

### **Coil lock**

Designed to help prevent theft. Available as an option for the bicycle rack

### **Mercedes-Benz Bikes**

These sporty and elegant bikes, with their exclusive Mercedes-Benz design, are suitable for everyday all-round use and for touring. For more detailed information, please see our “Mercedes-Benz Bikes” brochure

- Basic carrier bars*
- Bicycle rack*
- Bikes*
- Box of replacement bulbs*
- Coil lock*
- Ski bag*
- Ski/snowboard rack*

### **Ski bag for interior**

For up to four pairs of skis. With carrying strap and straps for attaching to load-securing rings in load compartment

### **Box of replacement bulbs**

The box of replacement bulbs ensures that you always have the right bulbs at hand for your GL-Class. So if one of the bulbs fails or you're driving in one of the many countries where daytime driving lights are compulsory, you're well prepared



# CARGO & CARE



#### **Rear-mounted bicycle rack for trailer coupling**

The rear-mounted bicycle rack is easy to attach to the trailer coupling. A simple fold-down mechanism means that the load compartment can still be opened. Basic version for two cycles. Lockable

#### **Extension kit for rear-mounted bicycle rack**

Allows you to add a third cycle | not pictured |

*The laden bicycle rack can be pivoted downwards, allowing the load compartment to be opened*

*When the rear-mounted bicycle rack is unladen, simply fold down the vertical retaining bar to access the load compartment. This function also allows space-saving stowage of the rack when removed*







### Safety tow rod

2-piece steel rod with patented connector and cotter pin. For trailer couplings and towing eyes. Approved for vehicles with a gross vehicle weight of up to 3.2 t

### Trailer coupling

Available in detachable or rigid design. Max. drawbar load 140 kg



### Adapter

For trailer with 7-pin plug



### Fluorescent jacket

Already compulsory in many countries, the bright orange and yellow fluorescent jackets with reflective stripes are conspicuous even in the dark. Available individually or as a pack of two

### Coolbox

black/grey | Hard case with fabric cover featuring pockets for extra items. Cold/hot switch. Capacity: 24 litres. 12V connection. Adjustable carrying strap

### Coolbag

black | Fabric outside - plastic liner inside. Outside pockets offer plenty of room for extra items. Capacity: 12 litres. 12V connection. Adjustable carrying strap



### Rectifier

Allows the Mercedes-Benz coolbox and the coolbag to be connected to a 230V socket at home

### Charger with trickle charge function

With its cutting-edge technology, the Mercedes-Benz charger ensures the longest possible battery life. Available in a 3.6 amp version (below) and a 25 amp version (not pictured)



# CARGO & CARE

- Adapter*
- Charger*
- Coolbag*
- Coolbox*
- Fluorescent jacket*
- Rear-mounted bicycle rack*
- Rectifier*
- Tow rod*
- Trailer coupling*



#### **Reversible mat with load sill protection**

This reversible mat features high-quality velour on one side and non-slip rubber on the other. It not only helps keep the original floor of the load compartment clean but the integral load sill protection also protects the load sill from scratches. When the rear seats are folded flat, the reversible mat covers the entire load area. Available in black

#### **Partition net**

Separates the load compartment from the passenger compartment



#### **Deep boot tub**

The hygienic way to transport items in the load compartment. Suitable for transporting foodstuffs



#### **Shallow boot tub**

Simple to clean. Non-slip thanks to PP-Flex material. Suitable for transporting foodstuffs

#### **Stowage crate**

Can be divided into four sections using the adjustable partitioning elements. Ideal for transporting items you don't want to tip over or slide around. Full functionality only in conjunction with the shallow boot tub



#### **Non-slip mat**

black | Non-slip mat made from oil and acid-resistant polyester. Designed to fit the contours of the load compartment



#### **Tie-down strap**

Even heavy objects can be secured in place easily using this strap

#### **Luggage nets**

Available for the floor of the load compartment and the load sill. Prevent lightweight objects from sliding around during your journey. All nets are in pocket format



#### **Luggage-securing feature**

Ingenious solution to the problem of luggage sliding around in the load compartment. Attaches securely around the object in question thanks to Velcro fastening

#### **Shopping crate**

anthracite | Collapsible



- Boot tubs*
- Luggage nets*
- Luggage-securing feature*
- Non-slip mat*
- Partition net*
- Reversible mat*
- Shopping crate*
- Stowage crate*
- Tie-down strap*

# CARGO & CARE

# Genuine accessories for the GL-Class

Light-alloy wheels are supplied without tyres, wheel bolts or hub caps

Further colour variants for individual products can be found in the separate price list for this brochure

Description	p	Item no.
<b>Adapter</b> (for ski and snowboard rack, "Comfort")	28	B6 687 0115
<b>Adapter</b> (for trailer coupling)	31	A000 821 1656
<b>Additional interior mirror</b>	23	A204 810 2817
<b>AMG floor mats</b> (LHD, complete set, anthracite)	20	B6 603 7106
<b>Audio 20 CD with 6-CD changer</b>	16	on request
<b>Audio 50 APS with 6-DVD changer</b>	17	on request
<b>Audio 50 APS without DVD changer</b>	17	on request
<b>"BABY-SAFE plus" child seat</b> (with automatic child seat recognition)	23	A000 970 1000
<b>Back cushion</b>	20	A000 970 0690
<b>Box of replacement bulbs</b> (ECE)	29	B6 681 0033
<b>Charger</b> (ECE version, 3.6A)	31	B6 754 2028
<b>Charger</b> (ECE version, 25A)	31	B6 754 2027
<b>Chrome-look indicator bulbs</b> (ECE)	11	A000 580 2410
<b>CLASSIC all-season floor mats</b> (LHD, complete set, black)	20	B6 668 0260
<b>CLASSIC rep floor mats</b> (LHD, complete set, black)	20	B6 636 0346
<b>CLASSIC velour floor mats</b> (LHD, complete set, black)	20	B6 629 0102
<b>Cleanbag</b>	20	A000 840 0674
<b>Coat hanger</b>	20	A000 814 0132
<b>Coil locks</b> (for New Alustyle bicycle rack, 3 mm, set of 2, common key)	29	A000 583 1695
<b>COMAND APS with 6-DVD changer</b>	17	on request
<b>COMAND APS without DVD changer</b>	17	on request
<b>Coolbag</b>	31	B6 681 8725
<b>Coolbox</b>	31	A000 820 4206
<b>Crossbars</b> (black)	26	B6 781 2128
<b>Crossbars</b> (chromed)	26	B6 781 2129

Description	p	Item no.
<b>Deep boot tub</b>	32	B6 668 0079
<b>"DUO plus" child seat</b> (with automatic child seat recognition)	23	A000 970 1100
<b>Europe navigation DVD for COMAND APS</b>	17	on request
<b>Europe navigation DVD for Audio 50 APS</b>	17	on request
<b>EXCLUSIV all-season floor mats</b> (LHD, complete set, black)	20	B6 668 0294
<b>Extension kit for rear-mounted bicycle rack</b>	30	A000 890 0693
<b>Fin attachments</b>	11	B6 688 1302
<b>Fluorescent jacket</b> (single, orange)	31	A000 583 0461
<b>Fluorescent jackets</b> (pack of 2, orange/yellow)	31	A000 583 0361
<b>High-sheen chromed door handle recesses</b>	11	B6 688 1237
<b>High-sheen chromed exterior mirror cover</b>	11	B6 688 1303
<b>Hub caps</b> (Roadster design in black)	08	B6 647 0201
<b>Hub caps</b> (Roadster design in blue)	08	B6 647 0120
<b>Hub caps</b> (sterling silver with chrome star)	08	B6 647 0206
<b>Hub caps</b> (titanium silver with chrome star)	08	B6 647 0202
<b>Illuminated door sill panels</b> (front door sill panels, alpaca grey)	21	B6 689 0143
<b>Illuminated door sill panels</b> (front door sill panels, black)	21	B6 689 0141
<b>Illuminated door sill panels</b> (front door sill panels, cashmere beige)	21	B6 689 0142
<b>iPod/iPhone holder</b>	14	B6 782 4501
<b>"KidFix" child seat</b> (with automatic child seat recognition)	22	A000 970 1800 9G43

Description	p	Item no.
Luggage net, floor of load compartment (short)	33	B6 766 0098
Luggage net, load sill	33	B6 766 0111
Luggage-securing feature	33	A001 987 1414
Luggage set (for MB roof box L)	27	A000 890 0411
Luggage set (for MB roof box XL)	27	A000 890 0511
Media Interface video cable (ECE)	14	A001 827 8004
Mercedes-Benz Bluetooth telephone module	15	on request
Mercedes-Benz iPod Interface Kit (ECE, not in conjunction with Code 810)	14	B6 782 4502
Mercedes-Benz iPod Interface Kit (ECE, only in conjunction with Code 810)	14	B6 782 4503
Mercedes-Benz iPod Interface Kit, Video (ECE)	14	B6 782 4563
Mercedes-Benz roof box M (titanium metallic, opens on right)	27	A000 840 2562
Mercedes-Benz roof box L (titanium metallic, opens on right)	27	A000 840 2362
Mercedes-Benz roof box XL (titanium metallic, opens on right)	27	A000 840 2762
Mobile-phone holders The range is being extended all the time. Please contact your Mercedes-Benz partner for details	15	on request
Mud flaps (front set, black)	08	B6 652 8242
Mud flaps (rear set, black)	08	B6 652 8237
New Alustyle basic carrier bars	28	B6 781 2141
New Alustyle bicycle rack	29	A000 890 0293
New Alustyle ski and snowboard rack "Comfort"	28	B6 685 1703
New Alustyle ski and snowboard rack "Standard"	28	B6 685 1702
Non-slip mat (long)	33	B6 768 0070
Non-slip mat (short)	33	B6 768 0071
Partition net	32	B6 766 0114
Rear-mounted bicycle rack for trailer coupling (ECE)	30	A000 890 0593
Rear Seat Entertainment System	16	on request

Description	p	Item no.
Rectifier	31	A000 982 0021
Reversible mat with load sill protection (long)	32	B6 768 0064
Reversible mat with load sill protection (short)	32	B6 768 0067
Rim locks	07	B6 647 0156
RUD-matic snow chain system (265/60 R18 and 265/55 R19)	08	B6 755 0030
Running board	11	B6 688 0630
Safety tow rod	31	A000 890 0224
SD memory card (ECE, COMAND APS)	17	B6 782 3973
Shallow boot tub	32	B6 668 0060
Shopping crate	33	B6 647 0995
Ski bag (single, for MB roof box L and XL)	27	A000 846 0806
Ski bag for interior	29	A000 890 0711
Ski rack insert (for MB roof box L)	27	A000 840 4718
Ski rack insert (for MB roof box XL)	27	A000 840 4818
Spectacles box	21	A000 810 0704
Stowage crate	32	A000 814 0041
Tie-down strap	33	A000 890 0294
Trailer coupling (detachable)	31	A164 310 2004
Trailer coupling (rigid)	31	A164 310 1604
Transport and stowage bag	26	A000 890 0111
Tyre pressure gauge	06	B6 658 8140
Valve caps	07	B6 647 2001
Vario bag (Alcantara, java)	23	A000 899 2061
Vario bag (Angel & Driver)	23	A000 899 1861
Vario bag (DaimlerSquare)	23	A000 899 1961
Wheel bolts	07	B6 647 0161
Wood/leather steering wheel	20	on request

# Mercedes-Benz and AMG light-alloy wheels for the GL-Class

## incenio designer wheels



<b>19</b>	<b>ALDHANAB</b>
7-spoke wheel	
8.5 J x 19 ET 56 · 275/55 R19	
B6 647 4335	
Finish: sterling silver	



<b>19</b>	<b>PERIM</b>
Multi-spoke wheel	
8.5 J x 19 ET 56 · 275/55 R19	
B6 647 4567	
Finish: titanium silver, high-sheen	



<b>19</b>	<b>PERIM</b>
Multi-spoke wheel	
8.5 J x 19 ET 56 · 275/55 R19	
B6 647 4568	
Finish: two-tone	



<b>20</b>	<b>MEREM</b>
5-spoke wheel	
8.5 J x 20 ET 56 · 275/50 R20	
B6 647 4565	
Finish: titanium silver, high-sheen	



<b>20</b>	<b>MEREM</b>
5-spoke wheel	
8.5 J x 20 ET 56 · 275/50 R20	
B6 647 4566	
Finish: two-tone	

On all light-alloy wheels, use wheel bolt B6 647 0161 and the corresponding rim lock B6 647 0156

Light-alloy wheels are supplied without tyres, wheel bolts or hub caps

Snow chain systems: please contact your Mercedes-Benz partner to find out about using snow chains with your light-alloy wheels

A word of advice: because of differences in national regulations, various different versions of each vehicle exist. Please also bear in mind that vehicle development is permanently ongoing. As a result, not all of the wheel/tyre combinations shown in this brochure will be approved for your particular Mercedes-Benz. Your Mercedes-Benz partner, however, has access to constantly updated information on every Mercedes-Benz wheel, including the relevant technical inspection findings and licensing conditions, and will be happy to advise you

With low-profile tyres, the tyres, wheels and parts of the suspension are subject to higher loads and are generally, therefore, more susceptible to damage, e.g. from uneven road surfaces



<b>20</b>	<b>RECHEO</b>
5-spoke wheel	
8.5 J x 20 ET 56 · 275/50 R20	
B6 647 4569	
Finish: titanium silver, high-shine	



<b>20</b>	<b>RECHEO</b>
5-spoke wheel	
8.5 J x 20 ET 56 · 275/50 R20	
B6 647 4570	
Finish: two-tone	



<b>20</b>	<b>TOMEKO</b>
10-spoke wheel	
8.5 J x 20 ET 56 · 275/50 R20	
B6 647 4528	
Finish: two-tone	



<b>20</b>	<b>TYNDARIDES</b>
5-spoke wheel	
8.5 J x 20 ET 56 · 275/50 R20	
B6 647 4210	
Finish: sterling silver	

# Mercedes-Benz and AMG light-alloy wheels for the GL-Class

Standard and optional



**18 5-SPOKE WHEEL**

8 J x 18 ET 53 · 265/60 R18

B6 647 4564

Finish: titanium silver



**18 5-SPOKE WHEEL**

8 J x 18 ET 53 · 265/60 R18

B6 647 4312

Finish: titanium silver



**19 5-TWIN-SPOKE WHEEL**

8.5 J x 19 ET 56 · 275/55 R19

B6 647 4211

Finish: titanium silver



**19 5-SPOKE WHEEL**

8.5 J x 19 ET 56 · 275/55 R19

B6 647 4219

Finish: titanium silver



**20 5-SPOKE WHEEL**

8.5 J x 20 ET 56 · 275/50 R20

B6 647 0166

Finish: tremolite metallic,  
high-sheen

On all light-alloy wheels, use wheel bolt B6 647 0161 and the corresponding rim lock B6 647 0156

Light-alloy wheels are supplied without tyres, wheel bolts or hub caps

Snow chain systems: please contact your Mercedes-Benz partner to find out about using snow chains with your light-alloy wheels

A word of advice: because of differences in national regulations, various different versions of each vehicle exist. Please also bear in mind that vehicle development is permanently ongoing. As a result, not all of the wheel/tyre combinations shown in this brochure will be approved for your particular Mercedes-Benz. Your Mercedes-Benz dealer, however, has access to constantly updated information on every Mercedes-Benz wheel, including the relevant technical inspection findings and licensing conditions, and will be happy to advise you

With low-profile tyres, the tyres, wheels and parts of the suspension are subject to higher loads and are generally, therefore, more susceptible to damage, e.g. from uneven road surfaces



AMG light-alloy wheels



**20 5-SPOKE WHEEL**

8.5 J x 20 ET 56 · 275/50 R20

B6 647 0129

Finish: titanium silver or  
himalayas mid grey B6 647 0165



**20 5-TWIN-SPOKE WHEEL**

8.5 J x 20 ET 56 · 275/50 R20

B6 647 0131

Finish: titanium silver



**21 AMG 5-SPOKE WHEEL**

Style III

10 J x 21 ET 37 · 295/40 R21

B6 603 1239

Finish: silver, high-sheen rim flange;  
wheel-arch flaring required



**21 AMG 5-SPOKE WHEEL**

Style VI

10 J x 21 ET 37 · 295/40 R21

B6 603 1070

Finish: silver, high-sheen;  
wheel-arch flaring required

Please note: changes may have been made to the products since this brochure went to press (31.08.2009). The manufacturer reserves the right to make changes to the design, form, colour and specification during the delivery period, provided these changes, while taking into account the interests of the vendor, can be deemed reasonable with respect to the purchaser. Where the vendor or the manufacturer uses symbols or numbers to describe an order or the subject of an order, no rights may be derived solely from these. The illustrations may show accessories and items of optional equipment which are not part of standard specification. Colours may differ slightly from those shown in the brochure, owing to the limitations of the printing process. This brochure has been compiled by Daimler AG of Germany and is distributed internationally. It provides a general indication of the range of models, features, optional extras and/or colours available in various countries. Some of the models, features, optional extras and/or colours may not be available in your country or may only be available in a different specification. Additionally some models, features, optional extras and/or colours may only be available in combination with others. For current and more specific information in relation to the range of models, features, optional extras and/or colours available in your country, and their pricing, you should contact your nearest authorised Mercedes-Benz Passenger Car Dealer.