

 **TOYOTA COROLLA**
oh what a *feeling!*

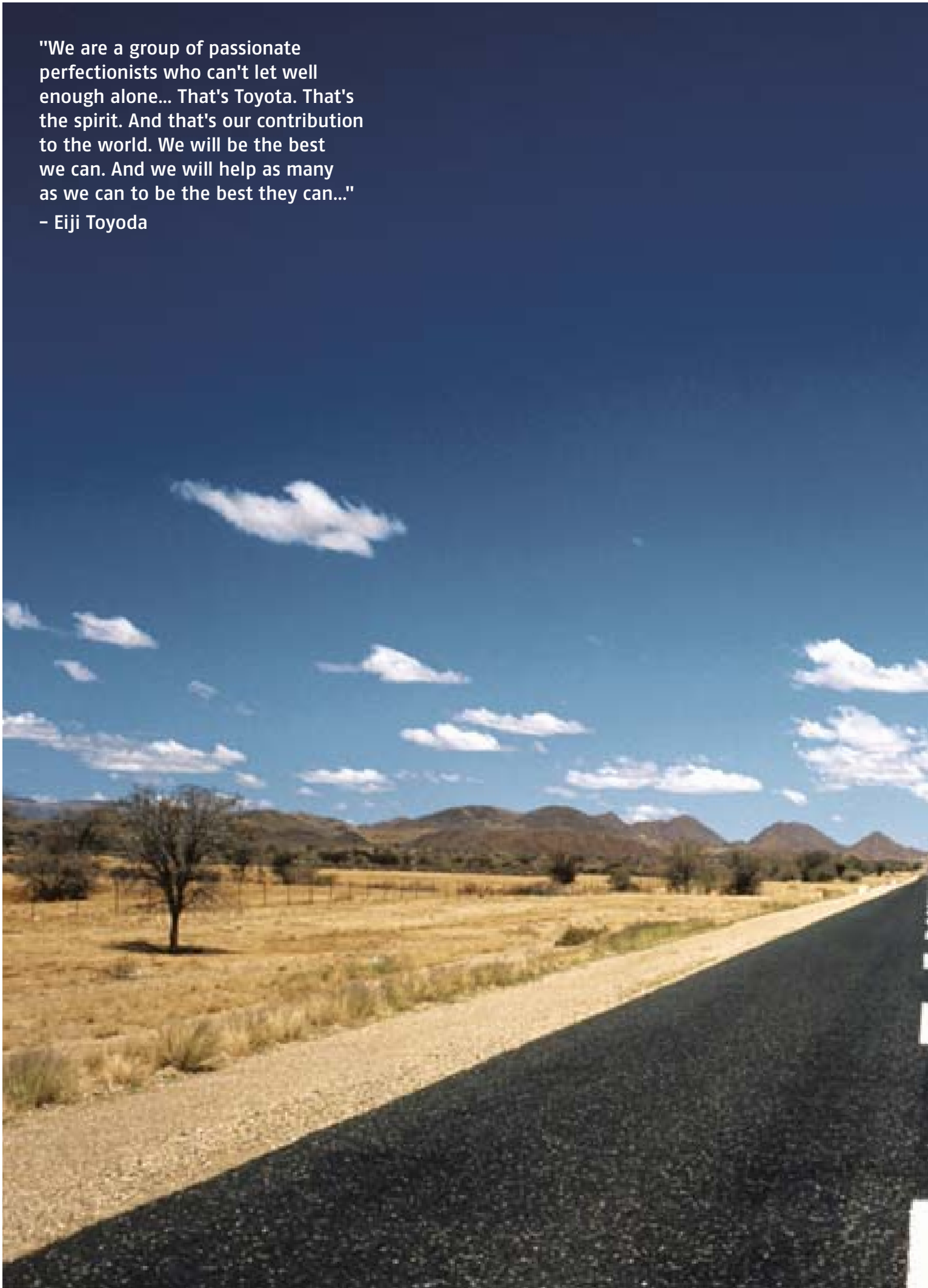
The World's Most Popular Small Car



toyota.com.au

"We are a group of passionate perfectionists who can't let well enough alone... That's Toyota. That's the spirit. And that's our contribution to the world. We will be the best we can. And we will help as many as we can to be the best they can..."

- Eiji Toyoda





Forever getting better.

The best Toyota ever?
We haven't built it yet.

And we probably never will. Because as soon as it's built, we'll be working on something new – something better. You could say it's our philosophy here at Toyota, the one guiding principle that underpins everything we do. Our Japanese founders called it 'kaizen', but we simply call it 'continuous improvement'.

DISCOVERING TOMORROW

We're incredibly proud of our 50-year history in this country – the cars we've built, the innovations we've introduced, and the reputation for quality we've worked so hard for. And never in all that time have we been more confident in the quality of our cars than right now – but we've still got one eye on tomorrow. After all, we see quality as more than just a promise – it's a way of life.

BETTER'S BEST

We've always been like this – forever looking to improve. We figure that if we're never satisfied, there's more chance that you just might be. That you'll be more likely to feel pride when you spot your car in the car park. Feel excited at the prospect of every drive. Feel confident that you and your passengers are safe. All from the moment you're handed the keys, to the moment you hand them on to someone else.

NO STOPPING US NOW

The best part is, there's still so much to be done. So many discoveries still to be made. So many challenges to be overcome. And so many benchmarks to be re-set. There's still so much to improve – so much still to look forward to.

COROLLA

No other small car has taken more people more places than Corolla.

For over 40 years its quality and versatility have made it a part of life for tens of millions and one of the most loved cars on the road. Constantly evolving to meet your needs, it's the car that's always ready, willing and able; the car you can rely on.

Both the Hatch and Sedan come with Trip Computer, Vehicle Stability Control, Traction Control, Smart Entry and Start System*, not to mention a sleek and stylish exterior, while each offers a unique experience for different lifestyles. And with a dynamic 100kW Dual VVT-i engine as standard and a new 2.0L engine on the Ultima Sedan, it's no wonder Corolla has grown to be the world's most popular small car.

Corolla: 34 million drivers and counting.

*Only available on Levin ZR and Ultima models.





Above: Levin ZR in Sterling Silver shown. Cover: Levin ZR and Ultima Sedan in Ink.

BORN STYLISH

With carefully considered features and modern styling, the newly refined Corolla looks every bit as good as it feels.

The Sedan, with its low, wide-set stance, exudes confidence. From the sweeping headlights to the new stepped tail lights, each bold feature complements the next.

The dynamic Hatch offers sculpted lines and a deep rear bumper that ensures the crisp Corolla styling isn't compromised, while a sporty feel is maintained throughout.

On the inside the tradition continues. The interior boasts a spacious cabin with ergonomically designed features, such as the streamlined centre console, for comfort and style.

And with seven different grades over the Hatch and Sedan range – from the well appointed entry level Ascent, to the sporty top grade Levin ZR Hatch and luxurious Ultima Sedan – there's a Corolla to suit every driver.





Ultima Sedan in Graphite and Levin ZR in Sterling Silver.

FEEL GOOD ON THE INSIDE

The Corolla's interior is where ergonomics, functionality and style fuse seamlessly, with generous seat proportions, redesigned white and amber-lit instrument cluster and new iridescent silver accents, all working together to provide a functional yet visually inspiring cabin.

Modern and functional, the interior instinctively connects driver and vehicle, with easy access to all controls, including audio controls on the premium D-shaped steering wheel[^], which also has a tilt and telescopic function to put you in the perfect driving position.

The Levin ZR Hatch offers even more, with sports-inspired door and seat trims. And the Ultima, as you'd expect, goes even further by integrating a leather accented interior, remote electric boot opener and a rear vision monitor[~] incorporated into the anti-glare rear vision mirror, to give you a video image of what's behind your car.

[^] Standard on all models except Ascent (included in the optional Cruise Pack).

[~] The rear view monitor does not provide a comprehensive view of the entire rear area of the vehicle and should only be used as an aid for viewing when reversing.



Ultima Sedan Interior shown





Levin ZR interior shown.

FULL OF TECHNOLOGICAL WONDERS

Thanks to its Smart Entry and Start System[#], the technology inside Corolla becomes evident before you even enter the car. Simply by carrying the key inside your pocket or bag, the Corolla senses your presence and unlocks the car the moment you touch the door handle, then allows the engine to be started keylessly with the mere press of the Smart Start button. Easy.

The audio system is Bluetooth™* compatible and offers hands-free mobile phone capabilities, along with the ability to store your six most frequently dialed numbers for speed dialling. You can also stream audio direct to the stereo system from some Bluetooth™* enabled mobile phones or compatible MP3 players. In every Corolla you'll find a 6-disc CD changer (a single disc player on Ascent), along with a 3.5mm AUX input for portable audio players and USB input for some iPods®~/USB memory sticks[>]. In fact, on the Conquest, Levin and Ultima models, the LCD screen lets you clearly view and select music files stored on some iPods®~.

Cruise control comes standard on all models except Ascent[^]. To add to this convenience, cruise control and audio switches have been built into the steering wheel, giving you total control at your fingertips[^].

On the instrument cluster, the Ascent and Conquest Hatch models feature eye-catching dials, while the Levin SX, Levin ZR, Conquest Sedan

and Ultima have a sophisticated 2-dial type Optitron display, that's considerably brighter and clearer than conventional displays, in both day and night driving. Plus, a multi-information trip computer provides at-a-glance updates on fuel economy, driving range, average speed and driving time since departure.

Power windows come standard across the range, along with power mirrors, remote central locking, and a pollen filter in the air conditioning, blocking out pollen, dust and other allergens. While the Levin ZR and Ultima have the added safety and convenience of auto-on headlights and rain sensing windscreen wipers, that even adjust to the speed of the vehicle.

The Levin ZR and Ultima also feature an electrochromatic interior rear view mirror, which automatically dulls the brightness and glare from the lights of other vehicles, while the Ultima Sedan now boasts a 3.3 inch LCD rear vision monitor[†] for increased safety during reversing. Also standard^{*} on the Levin ZR, Ultima and both Conquest sedan and hatchback models is a moonroof which offers tilt and slide functionality, plus a retractable shade.

These are just some of many intelligent technologies found in Corolla that make driving safer, easier and more enjoyable than ever.

POWER ECONOMY FUN

Dynamic acceleration, fuel efficiency, and environmental consideration are all hallmarks of the Dual VVT-i engine found under the hood of every Corolla. Combine this with a six-speed manual or four-speed automatic transmission and you're firmly at the helm of a responsive, efficient and exhilarating motoring experience[°].

Look beyond the Ultima Sedan's powerful form and you'll find an engine to match. Boasting the new 2.0L engine, with an 8% improvement in torque and 102kW of power produced earlier in the rev range, the Ultima makes quick work of hill-climbing and overtaking.

Corolla's manual transmission has been engineered to maximise performance and fuel economy, while the automatic transmission has the ability to "sense" hills, reducing the number of shifts needed when accelerating uphill, as well as optimising engine braking when travelling back down.

This, combined with Corolla's electric power-assisted steering and responsive suspension system, delivers superior handling and stability, as well as excellent fuel efficiency.

The Corolla achieves fuel economy of 7.3 litres/100km[†] with manual transmission, while the Levin ZR automatic and Ultima achieve 7.5 litres/100km[†] and 7.7 litres/100km[†] respectively.

Environmentally savvy.

In addition to its fuel efficiency, Corolla's Dual VVT-i engine helps reduce CO₂ and exhaust emissions, meeting the stringent Euro IV emission standards.

It's all part of how Corolla is made with the environment in mind. Manufacturing processes are constantly being developed and reviewed to ensure waste and energy usage are kept to a minimum over the life of the car, from the moment it starts to be built, to the day it's ultimately recycled.

[#] Standard on Levin ZR and Ultima models.

^{*} The Bluetooth™ word mark is owned by The Bluetooth SIG, Inc. Not all devices will be compatible and functionality will vary depending on the device.

[~] iPod® is a registered trademark of Apple Inc.

[<] Cruise control and wheel mounted audio switches are included as part of the optional Cruise Pack.

⁺ The rear view monitor does not provide a comprehensive view of the entire rear area of the vehicle and should only be used as an aid for viewing when reversing.

[°] Ultima models available only with automatic transmission.

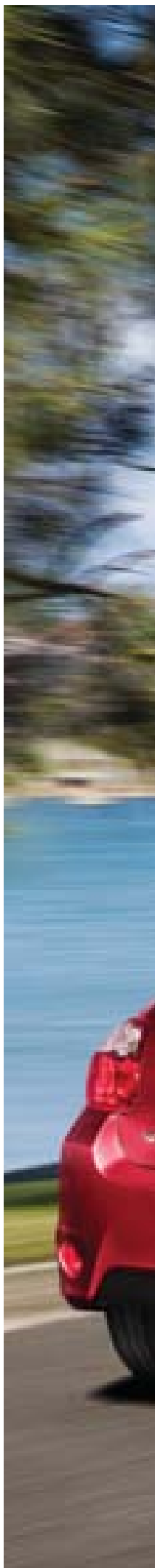
[†] Fuel consumption will vary depending on driving conditions/style, vehicle conditions and options/accessories. Source of fuel consumption data: ADR81/02 combined cycle.

^{††} Optitron display standard on Levin Hatch, Conquest Sedan and Ultima Sedan models.

[°] Standard on Conquest, Levin and Ultima models.

[#] Available from September 2010 production.

[>] Not all devices will be compatible and functionality will vary depending on the device.





Levin ZR Hatch 2-dial type Optitron display**



Audio system*



Smart Start button#



Six-speed hatch manual transmission





Levin ZR and Ultima Sedan in Ink.



Ascent Sedan

As standard, the Ascent includes a Dual VVT-i engine; ergonomic steering wheel; tilt and telescopic steering; Vehicle Stability Control (VSC) and Traction Control (TRC); power windows; side mirror turn signals; coloured handles, mirrors and front grille; an MP3 compatible CD player with a 3.5mm AUX input for portable audio players, USB input for some iPods®-/USB memory sticks† and Bluetooth™> compatibility. Standard across all models is Active Braking with intelligence (AB-i), Anti-skid Brakes (ABS), Electronic Brake-force Distribution (EBD) and Brake Assist (BA). Also standard, the Ascent comes with driver and front passenger SRS airbags, dual front side SRS airbags, dual full length side curtain shield airbags* and driver's knee airbag*. A Cruise Pack is available on the Ascent Sedan.



Conquest Sedan

The exceptional Conquest Sedan adds to the Ascent's impressive range of features offered with cruise control, premium steering wheel with built in audio and cruise control; Optitron Combimeter instrument display; body coloured grille with chrome accents, smoke finish halogen headlights, moonroof*, 16-inch alloy wheels^; and an MP3 compatible 6-disc CD changer with 3.5mm AUX input for portable audio players, USB input for some iPods®-/USB memory sticks† and Bluetooth™> compatibility.



Ascent Hatch

Standard equipment on the Ascent includes Toyota's sophisticated Dual VVT-i engine; ergonomic steering wheel; tilt and telescopic steering; VSC and TRC; power windows; side mirror turn signals with electric fold; coloured door handles and mirrors; an MP3 compatible CD player with a 3.5mm AUX input for portable audio players, USB input for some iPods®-/USB memory sticks† and Bluetooth™> compatibility. Standard across all models is AB-i, incorporating ABS, EBD and BA. Also standard, the Ascent comes with driver and front passenger SRS airbags, dual front side SRS airbags, dual full length side curtain shield airbags* and driver's knee airbag*. The Ascent offers an optional Cruise Pack which comes with cruise control, premium shift lever and steering wheel with built in audio and cruise control.



Conquest Hatch

The impressive Conquest Hatch complements the features found on the Ascent with cruise control, premium steering wheel with built in audio and cruise control and a premium shift lever; moonroof*; 16-inch alloy wheels^; an MP3 compatible 6-disc CD changer with 3.5mm AUX input for portable audio players, USB input for some iPods®-/USB memory sticks† and Bluetooth™> technology – all as standard equipment.

SOMETHING FOR EVERYONE

With a choice between the stylish new Sedan and the sporty Hatch, and with seven models ranging from the sleek entry level Ascent through to the generously appointed Levin ZR and Ultima, there's a Corolla to suit every driver.

Ultima Sedan

The range topping Ultima is equipped with all the features of the Conquest Sedan as well as a 2.0L engine; Smart Entry and Start System; rain sensing wipers; auto-on HID headlights; climate control; electro-chromatic interior mirror with built in 3.3 inch LCD Rear View monitor[#]; leather accented interior; Blade 16-inch alloy wheels[^] and front fog lights. Moonroof is also standard on the Ultima Sedan^{*}.

Levin SX Hatch

The sporty Levin SX Hatch also boasts all the features of the Ascent with the addition of cruise control; side skirts; fog lights; larger rear and front sports spoiler; 16-inch alloy wheels[^]; Optitron Combimeter instrument display; MP3 compatible 6-disc CD changer with 3.5mm AUX input for portable audio players, USB input for some iPods[~]/USB memory sticks[†] and Bluetooth™[>] compatibility; premium shift lever and steering wheel with built in audio and cruise control.

Levin ZR Hatch

The top grade luxury sports Levin ZR Hatch has the following features in addition to those of the Levin SX: Smart Entry and Start System; rain sensing wipers; climate control; electro-chromatic interior mirror; auto-on headlights; sporty seat and door trim and Blade 16-inch alloy wheels[^]. A moonroof^{*} is also standard on Levin ZR Hatch.

[~] iPod[®] is a registered trademark of Apple Inc.

[>] The Bluetooth™ word mark is owned by The Bluetooth SIG, Inc. Not all devices will be compatible and functionality will vary depending on the device.

[^] Spare steel wheel.

[#] The rear view monitor is designed as a driver assist device only and should not be used as a substitute for skilled driving and safe parking practices. The area into which the vehicle is to be reversed must be visually monitored by the driver while parking.

[†] Not all devices will be compatible and functionality will vary depending on the device.

^{*} Available from September 2010 production.

PEACE OF MIND COMES STANDARD

Every Corolla comes equipped with a raft of safety features designed to help keep both vehicle occupants and pedestrians safe from injury.

Passive safety.

Passive safety begins with Toyota's legendary Safe-T-Cell - a highly rigid body and reinforced cabin, complemented by seatbelt pre-tensioners and a comprehensive package of impact protection measures, such as seven SRS airbags*. Standard across all models*, Corolla has dual front SRS airbags, dual front side airbags, dual full length side curtain shield and driver's knee airbag. Crash protection in the Corolla is part of Toyota's Minimal Intrusion Cabin System, where reinforcements and structural members are designed to disperse impact energy around the passenger compartment and minimise the risk of injury to the occupants. In addition, impact-absorbing material in the door panels and trim helps to suppress any impact.

Active safety.

In addition to four-wheel disc brakes, every Corolla comes equipped with Toyota's world class Active Braking with intelligence (AB-i) system, as well as Vehicle Stability Control (VSC) and Traction Control (TRC).

AB-i has three components: Anti-skid Braking System (ABS), Electronic Brake-force Distribution (EBD) and Brake Assist (BA).

ABS uses modern electronics and a hydraulic actuator to compare and adjust wheel speeds when braking, helping to prevent wheel lock-up and potential skidding.

EBD minimises stopping distances by maximising braking power to the wheels with the most grip. So, for example, if there's a heavy load in the boot, EBD will recognise this and distribute the braking force accordingly to ensure maximum braking.

BA is designed to assist the driver in emergency braking. It interprets a quick, hard push of the brake pedal as emergency braking and supplements the braking power so that the car slows more rapidly.

Combined, these three pieces of technology instantaneously adjust braking to help provide an increased level of control and confidence.

Now add VSC and TRC to the equation and Corolla's true level of safety becomes clear. Both systems help the driver maintain maximum steering precision and control in the most testing of circumstances. VSC helps to prevent loss of control by dampening understeer and oversteer when faced with the unexpected. TRC on the other hand, fights against any loss of traction in the front wheels caused by harsh acceleration or less than ideal road conditions.

* Available from September 2010 production.





Toyota Safe-T-Cell



Dual front SRS airbags, front seat mounted side SRS airbags, driver's knee SRS airbag and side curtain shield SRS airbags*

Conquest Hatch in Tungsten shown and Ultima Sedan in Tidal Blue shown.

SPOILT FOR SPACE

While Corolla may be the world's most popular small car, the interior is anything but 'small', as clever design helps maximise space and storage, so you can enjoy equal levels of comfort and convenience.

Both the Hatch and Sedan feature a wide interior, high window surfaces and ample head clearance, all working together to create a roomier, more spacious cabin. The Hatch boasts up to 26 different storage compartments and a 350 litre luggage capacity, while the Sedan offers a further 3 storage compartments and an extra 100 litres of boot space. Compartments range from a dual compartment glove box to a hidden storage space in the floor of the boot, to keep those extra-special valuables out of sight.

Shopping, sports gear, luggage, your mates – the roomy and adaptable Corolla is ready to take them all. 60:40 split fold seats in all Hatch and Sedan models allow you to carry long objects while still carrying two passengers in the rear of the car. While a single-motion tilt-down mechanism allows the seat cushions and the backrests to fold down, creating an expansive and flat cargo space.



Ultima Sedan with 60:40 rear split



Levin ZR Hatch with 60:40 rear split



Ultima Sedan in Graphite shown.

GENUINE ACCESSORIES

The choice doesn't stop at Hatch or Sedan. Define your Corolla with any number of Toyota Genuine Accessories to add style, safety or functionality.



Kayak Carrier



Pro Ride Bicycle Carrier



Deluxe Ski & Snowboard Carriers – 4 or 6



Atlantis 200 Roof Pod



Front Weathershields (sold separately)



ParkAssist[®] – Reverse Parking Sensors – 4 head kit & Front Corner Clearance Parking Sensors – 2 head kit (sold separately)



Bonnet Protector & Headlamp Covers (sold separately)



Towbar – 1300kg (braked capacity), Towball & Trailer Wiring Harness (sold separately)



Mud Guard (set of 2) Available for Ascent and Conquest only



Rear Spoiler Available for Ascent Sedan only



15" x 6.5" Atlas Alloy Wheel Available for Ascent only



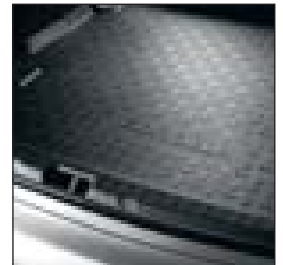
16" x 7" Raptor Alloy Wheel – Painted Finish



16" x 7" Raptor Alloy Wheel – Machined Finish



17" x 7" Kappa Alloy Wheel



Boot Liner



Seat Covers – Dark Grey



Display Audio System Includes 6 in-dash MP3/CD Changer & Radio with Bluetooth[™] featuring Handsfree capabilities & Audio Streaming, and is compatible with (optional) Rear View Camera[†] and some iPods[®], MP3 and USB sticks[®].



Satellite Navigation Audio System[†] Includes 4 in-dash MP3/CD Changer & Radio with Bluetooth[™] Handsfree Communications & (optional) Rear View Camera Compatibility[†].



FollowMe[®] Sound & Navigation System[†] Includes Bluetooth[™] Handsfree capabilities, Video and is compatible with (optional) Rear View Camera[†] and some iPods[®], MP3 and USB sticks[®].



Carpet Floor Mats – Grey (front and rear set)

 **TOYOTA GENUINE**
PARTS, SERVICE & ACCESSORIES

Toyota Genuine Accessories are covered by our Toyota Warranty*. Some Toyota Genuine Accessories are not applicable to all Corolla models. See your Dealer for advice regarding Toyota Genuine Accessories. Pictured Accessories are all sold separately. For a comprehensive guide on the entire range of Toyota Genuine Accessories, visit our website at accessories.toyota.com.au *All Toyota Genuine Accessories purchased and fitted to a Toyota are warranted for the remainder of the New Vehicle Warranty or 12 months, whichever is greater. Toyota Genuine Accessories purchased from an authorised Toyota Dealer over the counter are warranted from the date of purchase for 12 months. Conditions apply. All warranties are additional to the implied warranties under the Trade Practices Act 1974. >ParkAssist and Rear View Camera are designed as a driver assist device only and should not be used as a substitute for skilled driving and safe parking practices. The area into which the vehicle is to be reversed must be visually monitored by the driver while parking. < Towing capacity subject to regulatory requirements, towbar design, vehicle design and towing equipment limitations. †The Bluetooth[™] word mark is owned by The Bluetooth SIG, Inc. Not all devices will be compatible and functionality will vary depending on the device. †iPod[®] is a registered trademark of Apple Inc. †† Optional FollowMe iPod[®] kit available. iPod[®] is a registered trademark of Apple Inc. ††† Optional FollowMe iPod[®] kit available. ††† Current navigation mapping database encompasses major capital and primary national road networks, as well as offering some coverage of regional areas. ††† Not all devices will be compatible and functionality will vary depending on the device.



Levin ZR pictured is accessorised with Toyota Genuine 17" x 7" Kappa Alloy Wheels, ParkAssist – Clearance Parking Sensors, Bonnet Protector, Front Weathershields, Headlamp Covers and Aero Roof Racks.



EVEN MORE VALUE DOWN THE ROAD

Toyota Service Advantage: capped-price servicing. Toyota Service Advantage makes owning a Toyota even more economical. New Corolla models are entitled to low cost scheduled servicing* capped for up to 6 standard services during the first three years or 60,000km, whichever occurs first. Plus, you get the security of knowing you have Toyota trained technicians using Toyota Genuine Parts and advanced diagnostics to provide a genuinely better service.



*Toyota Service Advantage pricing represents the maximum amount payable for standard scheduled servicing which is as per 'maintenance for normal operating conditions' outlined in the Warranty & Service Handbook's service schedule. Service Advantage eligibility excludes Government and Rental vehicles and certain other exclusions apply. Contact your Toyota Dealer or visit advantage.toyota.com.au for further details. Levin ZR in Ink shown.

A SERVICE TO MEET ALL OF YOUR NEEDS.



The Toyota Guarantee

We are confident that all of our vehicles will be as reliable and dependable as you need them to be. We understand that a new car purchase can often be a big decision. You need to feel confident that not only are you making the right decision now, but you are making a decision that won't end up costing you more in the future. That is why every new Toyota is proudly backed by a 3 year/100,000km warranty⁽¹⁾ (whichever occurs first), which provides you with peace of mind and care free motoring.

 **TOYOTA WARRANTY**



Extend your peace of mind

When you purchase your new or used⁽²⁾ Toyota, you can extend your original factory warranty⁽³⁾ for up to 3 years. Providing you protection from unexpected repair bills and more importantly a little extra peace of mind.

Should you break down we also offer Roadside Assist, a reliable breakdown service with round the clock reassurance and assistance.

Toyota Extra Care is that extra helping hand when you need it most. For more details visit toyotaextracare.com.au

 **TOYOTA EXTRA CARE**



All the insurance coverage you could need

Could you afford costly repairs or having to replace your vehicle altogether? At Toyota Insurance⁽⁴⁾ we understand that your vehicle is a critical part of your life and can offer you a motor insurance solution designed specifically for Toyota vehicles.

Our comprehensive motor vehicle insurance benefits include:

- Replacement of your new Toyota if it is a total loss so long as it is less than 3 years old and has traveled less than 100,000km
- Genuine new Toyota parts replacement promise for Toyota vehicles less than 5 years old since the date of first registration
- Genuine Toyota quality repair guarantee for the duration of your vehicle ownership

Toyota Insurance also goes further by offering Finance Gap Insurance and Payment Protection Insurance.

Visit toyotainsurance.com.au for more details about the coverage we offer.

 **TOYOTA INSURANCE**



Finance to get you in the driver's seat

Toyota Financial Services⁽⁵⁾ can offer you a range of easy vehicle finance options available for you to organise conveniently at your preferred Toyota dealership.

Whether you require a simple personal vehicle loan, a novated lease for you or your employees, or serviced leasing on your small-business tool of trade vehicles, we can help.

Toyota Financial Services is the best way to finance your Toyota, visit toyotafinance.com.au to find out why.

 **TOYOTA**
FINANCIAL SERVICES

toyota.com.au

(1) Conditions apply. All warranties are additional to implied warranties under the Trade Practices Act 1974.

(2) Used vehicle being a vehicle less than three years old and has travelled less than 90,000km since its purchase as a new vehicle (conditions apply).

(3) Extended Factory Warranty is not available for all vehicles (for example Toyota vehicles used as a taxi or for rental and courier purposes). Please ask your participating Toyota Dealership about eligibility. Terms and conditions apply.

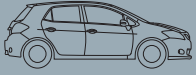
(4) Toyota Insurance products are underwritten by Aioi Insurance Co. Ltd. (Aioi), ABN 39 096 302 466 AFSL Number 254489 (Aioi). Aioi is a member of the Toyota Group of Companies. A Product Disclosure Statement (PDS) is available from participating Toyota Dealers or from Toyota Insurance by calling 137 200. You should consider the PDS before making a decision about this product. Terms and conditions apply.

(5) Toyota Financial Services is a division of Toyota Finance Australia Limited ABN 48 002 435 181.

IMPORTANT NOTICE – PLEASE READ: Toyota Australia uses its best endeavours to ensure brochure information is correct when published. You must check with your authorised Toyota Dealer when ordering to ensure the vehicle with your chosen specifications, equipment and colour is available and that the vehicle can be delivered within a timeframe suitable to you. When ordering accessories, you must check with your authorised Toyota Dealer to ensure the accessory's design, features and colours are available and will fit your vehicle. Colours displayed in this brochure are a guide only and may vary from actual colours due to printing/display process. Toyota Australia reserves the right to change without notice, at any time, prices, colours, materials, equipment, specifications and discontinue colours/models. To the full extent allowed by law, Toyota Australia will not be liable for any damage, loss or expense incurred as a result of reliance on this brochure in any way. Distributed nationally (other than in Western Australia) by Toyota Motor Corporation Australia Limited. ABN 64 009 686 097. 155 Bertie Street, Port Melbourne, VIC 3207. Material distributed in Western Australia by or on behalf of Prestige Motors Pty Ltd (for vehicles) and by Eastpoint Pty Ltd (for parts/accessories). Toyota Australia makes no warranties regarding (and will not be liable for) the accuracy of materials distributed in Western Australia. Part No. COROLLA1010. VALID 8169. Printed October 2010.



Yaris



Corolla



Prius



RAV4



Camry



Hybrid Camry



Aurion



Rukus



Kluger



Tarago



Prado



LandCruiser 200 Series



Hilux



LandCruiser 70 Series



HiAce Commuter Bus



HiAce Van



Coaster

