

 **TOYOTA HILUX**
oh what a *feeling!*

Action Utility Vehicle.



Getting the job done. The story of Toyota Commercial Vehicles.

Getting the job done. That's been our motto for more than half a century. No matter the terrain, no matter the weather, no matter the load, our engineers' pursuit of perfection will ensure we meet our mantra. At Toyota, we know that every job matters and we know that the quality, durability and reliability we promise is crucial.

There through thick and thin.

We've done it tough since day one. Back in 1958, on the slopes of the Snowies, our very first LandCruiser was used as a tool for thousands of Snowy Mountain Hydro Scheme workers. It got them to their worksite, and home again, every day. Their back-breaking work on unforgiving and unpredictable land was shouldered by this unbreakable workhorse. No wonder it's known as the 4WD that built Australia.

Now, more than 50 years on, we're still at work building the nation. Our commercial fleet is still getting the job done everywhere and more Australians rely on us than ever before. From cattle drovers to camel catches, boaties to brickies, our quality, durability and reliability is expected and we strive to deliver it through what we call 'Kaizen'; constant and continual improvement.

Work hard, work smart.

Practicality and durability, that's our pedigree but these days our commercial vehicles are as renowned as much for their intelligence as for their rugged exterior. Pop the hood or search the cab and you'll find our engineers have advanced the range with some ground-breaking achievements, like the KDSS suspension control that keeps the car steady on the shakiest of surfaces, or the state-of-the-art CRAWL system that keeps a firm grip on the toughest terrain.

You're also likely to experience more comfort features than ever before. Depending on the model you choose to get your job done, you'll have iPod®⁽¹⁾ and Bluetooth™⁽²⁾ connectivity, flexible, easy-fold seating configurations and the safety of SRS airbags – just an example of our restlessness for betterment.

We're committed to being a company with world values at heart. As such, the benefits of our pursuits go well beyond the driver when we develop vehicles which work for longer on less. New, fuel-efficient engines, give the same grunt you've come to expect, but more economically and more quietly than ever. So whether putting out fires in the big smoke, or putting in hard yards out bush, the only thing our vehicles aren't producing more of is emissions.

And still there's work to be done.

We boast the toughest, strongest, and smartest work vehicles ever made, because we've been there before. We've spent the last fifty years working to bring you the best vehicles to tackle the toughest terrain on Earth, and we'll continue to evolve and strive to make each Toyota better than the last.



(1) iPod® is a registered trademark of Apple Inc.

(2) The Bluetooth word mark is owned by Bluetooth SIG, Inc. Bluetooth™ will only operate with telephones enabled with compatible Bluetooth™ wireless technology (HFP (Hands Free Profile) v1.0 or later and OPP (Object Push Profile) v1.1 or later international standards). OPP functionality only works on satellite navigation equipment.

You already know the Toyota HiLux is a versatile ute. We say it's more than that. It's an Action Utility Vehicle (AUV). Like every vehicle to wear the HiLux badge, it's unbreakable. It also boasts impressive power across the range with two VVT-i petrol engines and a gutsy turbo diesel. There's plenty of room in the cab and out the back, plus it comes with a whole kit of practical features, so it does everything even better than before.

It's also got a fun side. When the weekend comes, it can trade wheelbarrows for trail bikes and take your weekend into high gear. Plus HiLux gives you levels of comfort and handling to make those long treks a lot easier going.

And while HiLux delivers the performance that pushes everything else to one side, it also has the looks to match. So read on and find out why the HiLux is grabbing all the attention wherever it shows up.

HiLux

THE WORLD'S FIRST
AUV
ACTION UTILITY VEHICLE



THE WORLD'S FIRST
AUV
ACTION UTILITY VEHICLE



4x2 Xtra Cab SR5 model shown.



Awesome power, amazing handling.

The all-alloy V6 is all torque.

HiLux has a big petrol V6 with 4.0 litres of quad cam-enhanced muscle. This high technology engine delivers 175kW of power at 5,200rpm, while Toyota's cutting edge Variable Valve Timing with intelligence (VVT-i) makes it more flexible and cleaner running. With a massive 376Nm of torque at 3800rpm in the automatic version, this V6 is sure to pull more than its fair share of work.

The 4.0 litre V6 is a refined unit as well, with low Noise, Vibration and Harshness (NVH). You can also look forward to sensible fuel economy, which will keep HiLux going for longer between fill-ups, so it won't drain your petty cash tin.

Petrol 4-cylinder with VVT-i.

The powerful 2.7 litre petrol engine really pulls its weight and produces a healthy 116kW of hard working power. This DOHC 4-cylinder also comes with VVT-i technology which makes it feel like a bigger engine, delivering flexibility and power all the way up the rev range. These advanced technology innovations also mean fuel efficiency benefits along with cleaner emissions.

Diesel that shows the others a clean pair of heels.

The 3.0 litre Electronic Direct Injection turbo diesel engine develops impressive power and torque, with low emissions. To be precise, this engine possesses an output of 126kW of power at 3600rpm along with an impressive 343Nm of torque at 3400rpm all while remaining within EURO IV emissions standards. We'd say eat our dust, but we are producing less of it.



4x4 Double Cab SR5 model shown.



2TR-FE engine (WorkMate models).



1KD-FTV engine (SR and SR5 models).



1GR-FE engine (SR and SR5 models).

One of the reasons is the 'common rail' fuel injection technology, which gives you a balanced package of power output and reliability. Engine improvements even extend to a four valve cylinder head, centrally located injector and in-piston combustion chamber for better performance. And with low emissions, it even cleans up after work. Toyota engineers have also made it surprisingly smooth running with twin counter-rotating balance shafts which reduces NVH. Plus, electronic engine management and an electronic 'drive-by-wire' throttle makes for greater driveability.

Latest suspension technology.

The HiLux 4x4 and 4x2 have come ahead in leaps and bounds in the suspension, steering and brake departments. Toyota has taken everything it has learned from over a decade and a half of Toyota off-roaders like Prado,

LandCruiser and other SUVs. The best has been used in the HiLux, delivering big improvements in ride quality, handling and vehicle stability.

Cornering performance is enhanced by a double wishbone coil-spring front suspension with a ball-joint mounted stabiliser bar. This suspension design also results in a more comfortable ride while giving more confident handling despite road undulations or uneven camber.

Attention to detail even extended to optimum positioning of the coil-springs to help avoid damage off-road. As for manoeuvring, power assisted rack and pinion aids steering precision and ease. So you can negotiate your way through a congested worksite, or around corners on the way to the mountains. To slow things down safely and quickly, ABS is standard on the SR5, and optional on WorkMate and SR models.

Tested in Australia.

Conditions don't come much tougher than in Australia. So to thoroughly test the many design and engineering innovations, Toyota tested HiLux at high speed in the outback to make sure it was tough enough for the rest of the world.



WorkMate (non-ABS option) model shown.

WorkMate. Step in, stretch out.

HiLux boasts a large and spacious cabin. It's also easy to drive, as sensible ergonomic design has ensured that important controls are placed right where you need them.

The seating is more supportive and includes a driver's bucket seat with a reclining seat back on all models, ensuring greater comfort on longer journeys. Comfort levels have also been improved through a quieter cabin. On long trips you'll appreciate that HiLux has a streamlined body, which reduces wind noise.

Further measures to improve handling include a dramatic 50% increase in chassis vertical bending rigidity, large diameter body mounts and extensive use of high tensile steel.



WorkMate Double Cab.

Being a body on frame design helps isolate the cabin from engine vibration and road noise. Plus there's a high-density bonnet silencer and dash outer silencer, a double felt inner silencer and an asphalt sheet on the cabin floor. So as you take off, you may think you're still wearing earplugs. The quieter cabin ensures you'll enjoy the audio system* all the more with its electronic tune AM/FM radio and single disc CD player with audio input for your USB, iPod[®] or MP3 player as well as Bluetooth™^ handsfree and audio streaming[†].

There's also plenty of storage with several cupholders and large moulded pockets in the doors which are handy for maps, order books and other essentials. Then as you leave this modern interior, you have the reassurance of an immobiliser

to help keep other blokes from 'borrowing' what will soon become your favourite tool.

When you choose the option of the Anti-skid Braking System (ABS) on the WorkMate you get the added peace of mind that comes with extra safety.

* Available from August 2009 production.

± iPod[®] is a registered trademark of Apple Inc.

^ The Bluetooth word mark is owned by Bluetooth SIG, Inc. Bluetooth™ will only operate with telephones enabled with compatible Bluetooth™ wireless technology (HFP (Hands Free Profile) v1.0 or later and

OPP (Object Push Profile) v1.1 or later international standards). OPP functionality only works on satellite navigation equipment.

† Streaming Bluetooth™ Audio compatibility requires devices that are enabled with compatible technology Bluetooth™ v1.2 or later and must also be enabled with both A2DP (Advanced Audio Distribution Profile) v1.0 or later and AVRCP (Audio/Video Remote Control Profile) v1.0 or later.



SR. Feel comfortably at ease.

Move up to the SR.

In addition to the standard features on the WorkMate, SR has even more creature comforts such as cruise control[†], steering wheel mounted audio controls* power exterior mirrors, power windows and central locking with remote keyless entry which will make for a quick getaway.

Single Cab.

There are plenty of handy storage pockets inside, while out the back it has the longest tray of the line up for the biggest carrying capacity.



Xtra Cab.

Two adults have got more room to move than in the Single Cab, plus even more space behind the seats to seat an apprentice or two, or to keep valuable tools or your bags of gear dry and secure. There's also extra storage room under the rear seats along with storage pockets in the quarter trim.

Double Cab.

You'll seat up to five adults in this one, with storage room to boot. Again, there's hidden storage under the rear seats. The seat cushions can also be tipped up, giving you even more storage space. Yet for all its interior room, it's still got a big cargo-hungry tray.

* Available from August 2009 production.
† Automatic transmission only.



4x4 Double Cab SR5.



Double Cab SR5.



SR5. Travel business class.

Business class in the SR5.

The SR5 is the ultimate weekday workhorse and weekend escape vehicle. It has everything mentioned earlier, plus more. With cruise control*, a higher spec driver's bucket seat with a vertical height adjust, as well as even better quality fabric trim, SR5 makes driving more comfortable.

While you're cruising, the audio system* with 6 disc in-dash changer, Bluetooth™^ phone compatibility and an audio input for your USB, iPod®+ or MP3 player and 4 speakers will play your favourite music loud and clear whilst making sure you never miss a call. The 'Optitron' display ensures easier readout of the instrumentation, whatever the ambient sunlight glare.

A multi-information display tells you outside temperature, fuel consumption, average speed, ignition on, cruising range, compass and time. As if these great features weren't enough, controls for both the audio and multi-information display are also located on the steering wheel# of the SR5, which like all models is also tilt adjustable to ensure driving comfort.

Comfort and storage.

HiLux has more passenger car-type interiors for greater comfort, interior space, driver ergonomics and safety. In the Xtra Cab and Double Cab, the rear seat and door openings have been designed for easier exit and entry into the roomier rear cabin area. All models have more

storage space, like large moulded door pockets, each incorporating drink holders. There are cupholders in the dash, a decent-sized lockable glovebox and a console packed with storage areas.

You can put your essentials in the console tray, store things like CDs in the centre box, plus in the Xtra Cab there's a small article holder for rear seat passengers (features vary by model).

The double cab SR5 completes the line up by offering privacy glass on the rear doors and back window as well as sport styled front seats in 4x4 models.*

Available from August 2008 production.

* Available from August 2009 production.

^ The Bluetooth word mark is owned by Bluetooth SIG, Inc. Bluetooth™ will only operate with telephones enabled with compatible Bluetooth™ wireless technology (HFP (Hands Free Profile) v1.0 or later and OPP (Object Push Profile) v1.1 or later international standards). OPP functionality only works on satellite navigation equipment.

+ iPod® is a registered trademark of Apple Inc.



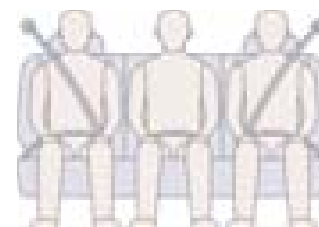
SR5 model shown.



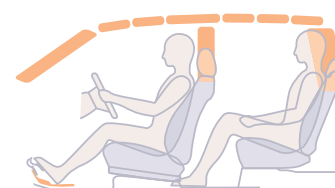
Disc brake.



ABS optional on WorkMate and SR models.



Pre-tensioning seatbelts (outer belts only).



Head and leg impact protection structure.

Work safe in HiLux.

HiLux is thankfully big on safety as well. It has been designed for outstanding crash performance to the toughest Australian and European standards. Testing has included the 40% offset deformable barrier test at 64km/h, because you need protection from collisions that aren't always straight on. Meeting the requirements of the full frontal impact test at 56km/h and side impact at 55km/h also offers peace of mind.

You'll also breathe easier with dual SRS airbags provided as a standard feature while front side and full length curtain SRS airbags* are a feature of the 4x4 double cab SR5. Pretensioning seatbelts, standard across all HiLux models,

prepare you for the worst by locking the seatbelts prior to a collision.

HiLux also has an energy absorbing front body/chassis structure and a strong safety cell, to help keep the cabin intact during a collision, it's also another way that HiLux will further strengthen its 'unbreakable' reputation.

Caring for the environment as well.

The greater power output of the engines is not at the expense of the environment. This is evident by all of the HiLux range containing an engine that is so fuel efficient that they each meet EURO IV emissions standards# (standards higher than those seen in Australia).

Increased fuel efficiency contributes to reducing CO₂ emissions. Variable Valve Timing with intelligence (VVT-i) equipped engines also have further innovations which optimise fuel efficiency and minimise emissions of the major pollutants hydrocarbons, carbon monoxide and nitrogen oxides. VVT-i in both of the petrol engines means mild overlap at idle and low engine load, which means reduced opportunity for raw fuel to go straight out the exhaust. Even the high-efficiency automatic transmissions help with operational efficiency.

Available from August 2008 production.
* Available from August 2009 production.

The strong, quiet type.

HiLux has impressive body rigidity, which results in excellent durability and reduced Noise, Vibration and Harshness (NVH). In fact, body design has been one of Toyota's strong points for years, achieving high rigidity yet meeting strict weight targets.

Computer Aided Design (CAD) and attention to material dimensions has helped, along with clever bracket structures and the placement of reinforcing panels.

Extensive use of high tensile steel sheet maximises body strength and rigidity. The full body outer side panel is pressed from a single sheet, with no joins to flex and less chance for corrosion to sneak in. Plus, extensive use of anti-corrosion sheet steel further extends durability. The stronger body enhances safety in the event of a crash, reduces NVH and offers generous load carrying capacity.

A classy chassis.

Something you won't find supporting some other utes is a full chassis, accounting for HiLux's up to 1.2 tonne* payload.

The chassis structure utilises strong cross members, additional braces, special compression and bending sections and internal reinforcements for extra strength in key areas.

Main chassis rails have a deep cross section and optimum placement of reinforcing panels for greater stability off-road. While side rails have varying material thickness further optimising rigidity.

Integrating the main cross channels with the main chassis members reduces welding and increases durability.

Not surprisingly, the strong chassis means you can load HiLux with up to 1.2 tonnes* of tools and materials with confidence (payload varies by model). Same goes for towing capability. Check the towing specs that show you can pull portable power generators or power boats without fear of pulling its insides out.

Strong yet forgiving.

Certain body and chassis components up front have been carefully designed to create an impact-absorbing structure.

Varying thickness of chassis sections in the main front rails helps control impact crash energy, while the cabin structure has been kept strong for protection.

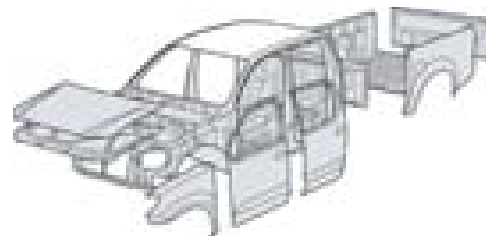


***Please note:**

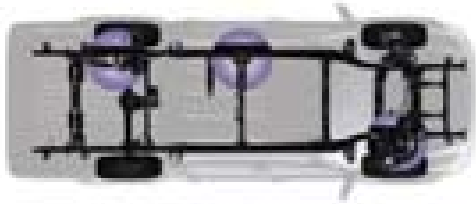
Pending model configuration as some models fall under 1.2 tonne. The loading configuration of your HiLux reduces the available payload for passengers, optional equipment, cargo and tow-ball download. When changing the mass configuration of your HiLux, it is necessary to consider total mass of the vehicle (including passengers, optional equipment, cargo, tow-ball download and trailer mass) and the distribution of the mass to ensure that Gross Vehicle Mass (GVM), Gross Combination Mass (GCM), maximum towing capacity, maximum tow-ball download and individual axle limits of your HiLux are not exceeded when the vehicle is in service. The configuration of different optional extras on your HiLux will cause different loadings on the front and rear axle. It is important to realise that additional equipment, seat position, passenger position, and other load factors may cause a shift in the loadings of the front and rear axles. It is important that this configuration change be taken into account when you are loading your HiLux. Reference to Gross Combined Mass (GCM) refers to the total permissible combined weight of the vehicle and trailer/caravan being towed including occupants, fuel & cargo.



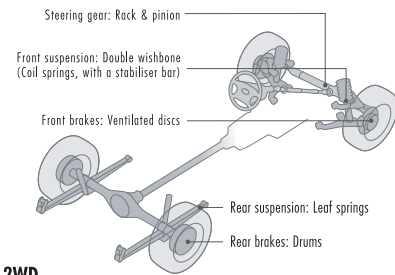
Rigid body structure.



Anti-corrosion steel sheeting.



Reliability of frame.



2WD



The HiLux 4x2 range.



4x2 Double Cab WorkMate model shown.



4x2 WorkMate

Toyota's working class hero is conveniently available in either Single Cab or Double Cab variants. It's got the power to haul heavy loads so you can carry all your gear to the worksite or tow your jetskis to the beachside.

4x2 SR

This HiLux is a real trooper. With either a big 4.0 litre petrol V6 or a 3.0 litre turbo diesel, it's a tireless worker (options vary by model). The Double Cab version gives you more room to carry more people, or choose the Xtra Cab if it's gear you tend to lug around. It's also easy to live with, thanks to an MP3 compatible CD player, audio input for your USB*, iPod® or MP3 player as well as Bluetooth™^* communications and central locking. But deep down the SR is a hard worker that never grumbles and is always kind to the boss.

4x2 SR5

Elements of chrome on the exterior combine with rear window privacy glass* on the double cab models to set this HiLux apart. The SR5 has many of the comfort features of a car, with the work ethics of a HiLux. Live life to its fullest with the power of a big 4.0 litre V6 that features standard cruise control*. The interior features an MP3 compatible 6 disc audio unit* with Bluetooth™^ communications and USB, iPod® input, a premium steering wheel with audio and multi-information display controls* and remote central locking. So you can pick up clients by day, then impress the girlfriend on weekends.



TOYOTA SERVICE ADVANTAGE – CAPPED PRICE SERVICING

Toyota Service Advantage makes owning a Toyota even more economical. New HiLux models are entitled to low cost scheduled servicing* capped for up to 6 standard services during the first three years or 60,000km, whichever occurs first. Plus, you get the security of knowing you have Toyota trained technicians using Toyota Genuine Parts and advanced diagnostics to provide a Genuinely Better service.



4x2 Single Cab SR model shown.

^ The Bluetooth word mark is owned by Bluetooth SIG, Inc. Bluetooth™ will only operate with telephones enabled with compatible Bluetooth™ wireless technology (HFP (Hands Free Profile) v1.0 or later and OPP (Object Push Profile) v1.1 or later international standards). OPP functionality only works on satellite navigation equipment.

± iPod® is a registered trademark of Apple Inc.

Available from August 2008 production.

* Available from August 2009 production.

* Toyota Service Advantage pricing represents the maximum amount payable for standard scheduled servicing which is as per 'maintenance for normal operating conditions' outlined in the Warranty & Service Handbook's service schedule. Service Advantage eligibility excludes Government and Rental vehicles and certain other exclusions apply. Contact your Toyota Dealer or visit advantage.toyota.com.au for further details.

The HiLux 4x4 range.

4x4 SR

This is the worker you can take anywhere. It's a 4WD, so it's right for the farm or city worksites and equipped for both. This HiLux is available in an automatic turbo diesel, so you get low down grunt with sensible running costs. It's also great to live in thanks to features like the steering wheel mounted audio controls* for your MP3 compatible CD player, which features audio input for your USB*, iPod® or MP3 player and Bluetooth™** communications, central locking and remote keyless entry. So whether you're checking fire trails or searching for the best wave breaks, SR will take you there and back.

4x4 SR5

This HiLux takes everything to the max. With its proven 4WD capabilities it can negotiate boggy worksites or treacherous off-road tracks with ease. You'll enjoy maximum comfort whether you choose the Xtra Cab or Double Cab to make long journeys easy going.

Plus it dresses up for work, with chrome mirrors, body-coloured overfender flares, chrome door handles and an alloy sports bar. The double cab also comes with privacy glass* on the rear doors and back window as well as sport styled front seats.* HiLux SR5 is the best looking HiLux ever.



TOYOTA SERVICE ADVANTAGE - CAPPED PRICE SERVICING

Toyota Service Advantage makes owning a Toyota even more economical. New HiLux models are entitled to low cost scheduled servicing* capped for up to 6 standard services during the first three years or 60,000km, whichever occurs first. Plus, you get the security of knowing you have Toyota trained technicians using Toyota Genuine Parts and advanced diagnostics to provide a Genuinely Better service.



* Available from August 2009 production.

± iPod® is a registered trademark of Apple Inc.

^ The Bluetooth word mark is owned by Bluetooth SIG, Inc. Bluetooth™ will only operate with telephones enabled with compatible Bluetooth™ wireless technology (HFP (Hands Free Profile) v1.0 or later and OPP (Object Push Profile) v1.1 or later international standards). OPP functionality only works on satellite navigation equipment.

Toyota Service Advantage pricing represents the maximum amount payable for standard scheduled servicing which is as per 'maintenance for normal operating conditions' outlined in the Warranty & Service Handbook's service schedule. Service Advantage eligibility excludes Government and Rental vehicles and certain other exclusions apply. Contact your Toyota Dealer or visit advantage.toyota.com.au for further details.



4x4 Double Cab SR5 model shown.



4x4 Xtra Cab SR5 model shown.



Get it on and go your own way.

Double Cab SR Cab Chassis accessorised with Heavy Duty Steel Tray (Colour Coded) with Checker Plate Floor.

THESE ARE JUST SOME OF THE ACCESSORIES AVAILABLE. FOR A COMPLETE LIST AND FURTHER DETAILS, PLEASE SEE YOUR TOYOTA DEALER OR VISIT ACCESSORIES.TOYOTA.COM.AU



4x4 BREAKER BULL BAR - STEEL SUPERWINCH COMPATIBLE (SOLD SEPARATELY)



ALLOY NUDGE BAR - AIRBAG COMPATIBLE



HARD TONNEAU COVER RANGE (1 DECK SHOWN)
Double Cab Utility only



TRAY BODY RANGE (ALLOY TRAY BODY WITH OPTIONAL REAR RACK & ALLOY WINDOW PROTECTOR SHOWN)



CANOPY RANGE (HIGH ROOF SHOWN)
Double Cab only



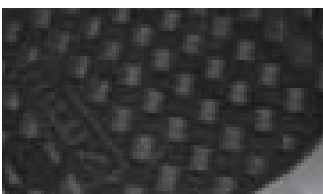
SOFT TONNEAU COVER RANGE (A DECK SHOWN)
All Utility models



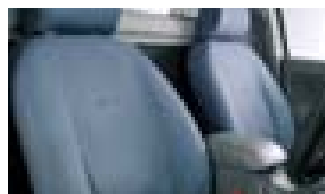
ALL WEATHER RUBBER UTE MAT
All Utility models



TOWBAR RANGE (TOWBAR WITH REAR STEP (2250kg Braked)* SHOWN WITH OPTIONAL TOWBALL & TRAILER WIRING HARNESS)



ALL WEATHER RUBBER FLOOR MATS
FRONT & REAR AVAILABLE (SOLD SEPARATELY)



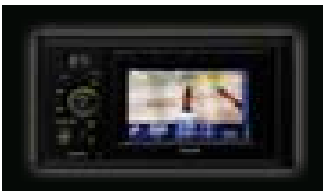
CANVAS SEAT COVERS



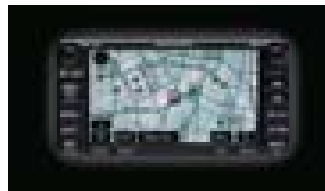
TYRE PRESSURE MONITORING SYSTEM



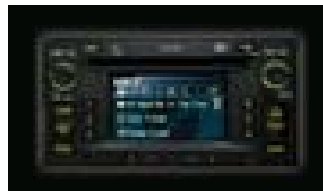
UTE LINER & TAILGATE LINER
Double Cab Utility only



FOLLOWME SOUND & NAVIGATION SYSTEM* - INCLUDES BLUETOOTH™[^] HANDSFREE COMMUNICATIONS, VIDEO, USB, IPOD®[‡], MP3 & (OPTIONAL) REAR VIEW CAMERA* COMPATIBILITY



SATELLITE NAVIGATION AUDIO SYSTEM* - INCLUDES 4 IN-DASH MP3/CD CHANGER & RADIO WITH BLUETOOTH™[^] HANDSFREE COMMUNICATIONS & (OPTIONAL) REAR VIEW CAMERA* COMPATIBILITY



DISPLAY AUDIO SYSTEM - INCLUDES 6 IN-DASH MP3/CD CHANGER & RADIO WITH ADVANCED BLUETOOTH™[^] FEATURING HANDSFREE COMMUNICATIONS & STEREO AUDIO STREAMING; USB/AUXILIARY AUDIO INPUT/IPOD®[‡] & (OPTIONAL) REAR VIEW CAMERA* COMPATIBILITY
Audio upgrade for Workmate & SR models only



ALLOY WHEEL LOCK NUT SET

TOYOTA GENUINE ACCESSORIES ARE COVERED BY OUR TOYOTA WARRANTY[‡]

Some Toyota Genuine Accessories are not applicable to all HiLux models. See your Toyota dealer for advice regarding Toyota Genuine Accessories. Pictured Accessories are all sold separately. For a comprehensive guide on the entire range of Toyota Genuine Accessories, visit our website at accessories.toyota.com.au.

#Towing capacity subject to regulatory requirements, towbar design, vehicle design and towing equipment limitations. *The rear view camera does not provide a comprehensive view of the entire rear area of vehicle and should only be used as an aid for viewing when reversing. *Current navigation mapping database encompasses major capital and primary national road networks, as well as offering some coverage of regional areas. ^The Bluetooth word mark is owned by Bluetooth SIG, Inc. Bluetooth™ will only operate with telephones enabled with compatible Bluetooth™ wireless technology (HFP (Hands Free Profile) v1.0 or later and OPP (Object Push Profile) v1.1 or later international standards). OPP functionality only works on satellite navigation equipment. †Optional FollowMe iPod® kit available. ‡iPod® is a registered trademark of Apple Inc. *Streaming Bluetooth™ Audio compatibility requires devices that are enabled with compatible technology Bluetooth™ v1.2 and must also be enabled with both A2DP (Advanced Audio Distribution Profile) v1.0 or later and AVRCP (Audio/Video Remote Control Profile) v1.0 or later. †All Toyota Genuine Accessories purchased and fitted to a Toyota are warranted for the remainder of the New Vehicle Warranty or 12 months, whichever is greater. Toyota Genuine Accessories purchased from an authorised Toyota Dealer over the counter are warranted from the date of purchase for 12 months. Conditions apply. All warranties are additional to the implied warranties under the Trade Practices Act 1974.

A SERVICE TO MEET ALL OF YOUR NEEDS.



The Toyota Guarantee.

We are confident that all of our vehicles will be as reliable and dependable as you need them to be. We understand that a new car purchase can often be a big decision. You need to feel confident that not only are you making the right decision now, but you are making a decision that won't end up costing you more in the future. That is why every new Toyota is proudly backed by a 3 year/100,000km warranty⁽¹⁾ (whichever occurs first), which provides you with peace of mind and care free motoring.

 **TOYOTA WARRANTY**



Extend your peace of mind.

When you purchase your new or used⁽²⁾ Toyota, you can extend your original factory warranty⁽³⁾ for up to 3 years. Providing you protection from unexpected repair bills and more importantly a little extra peace of mind.

Should you break down we also offer Roadside Assist, a reliable breakdown service with round the clock reassurance and assistance.

Toyota Extra Care is that extra helping hand when you need it most. For more details visit toyotaextracare.com.au

 **TOYOTA EXTRA CARE**



All the insurance coverage you could need.

Could you afford costly repairs or having to replace your vehicle altogether? At Toyota Insurance⁽⁴⁾ we understand that your vehicle is a critical part of your life and can offer you a motor insurance solution designed specifically for Toyota vehicles.

Our comprehensive motor vehicle insurance benefits include:

- Replacement of your new Toyota if it is a total loss so long as it is less than 3 years old and has travelled less than 100,000kms
- Genuine new Toyota parts replacement promise for Toyota vehicles less than 5 years old since the date of first registration
- Genuine Toyota quality repair guarantee for the duration of your vehicle ownership

Toyota Insurance also goes further by offering Finance Gap Insurance and Payment Protection Insurance.

Visit toyotainsurance.com.au for more details about the coverage we offer.

 **TOYOTA INSURANCE**



Finance to get you in the driver's seat.

Toyota Financial Services⁽⁵⁾ can offer you a range of easy vehicle finance options available for you to organise conveniently at your preferred Toyota dealership.

Whether you require a simple personal vehicle loan, a novated lease for you or your employees, or serviced leasing on your small-business tool of trade vehicles we can help.

Toyota Financial Services is the best way to finance your Toyota, visit toyotafinance.com.au to find out why.

 **TOYOTA**
FINANCIAL SERVICES

toyota.com.au

(1) Conditions apply. All warranties are additional to implied warranties under the Trade Practices Act 1974.

(2) Used vehicle being a vehicle less than three years old and has travelled less than 90,000kms since its purchase as a new vehicle (conditions apply).

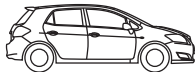
(3) Extended Factory Warranty is not available for all vehicles (for example Toyota vehicles used as a taxi or for rental and courier purposes). Please ask your participating Toyota Dealership about eligibility. Terms and conditions apply.

(4) Toyota Insurance products are underwritten by Aioi Insurance Co. Ltd. (Aioi). ABN 39 096 302 466 AFSL Number 254489 (Aioi). Aioi is a member of the Toyota Group of Companies. A Product Disclosure Statement (PDS) is available from participating Toyota Dealers or from Toyota Insurance by calling 137 200. You should consider the PDS before making a decision about this product. Terms and conditions apply.

(5) Toyota Financial Services is a division of Toyota Finance Australia Limited ABN 48 002 435 181.



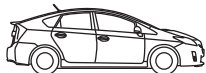
Yaris



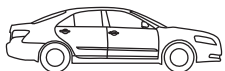
Corolla



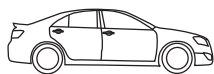
RAV4



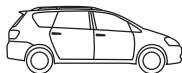
Prius



Camry



Aurion



Avensis



Kluger



Tarago



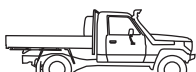
Prado



LandCruiser 200 Series



Hilux



LandCruiser 70 Series



Commuter Bus



HiAce



Coaster

