

 **TOYOTA LANDCRUISER 70 SERIES**  
oh what a *feeling!*

Still powerful, still indestructible.



## Getting the job done. The story of Toyota Commercial Vehicles.

Getting the job done. That's been our motto for more than half a century. No matter the terrain, no matter the weather, no matter the load, our engineers' pursuit of perfection will ensure we meet our mantra. At Toyota, we know that every job matters and we know that the quality, durability and reliability we promise is crucial.

### There through thick and thin.

We've done it tough since day one. Back in 1958, on the slopes of the Snowies, our very first LandCruiser was used as a tool for thousands of Snowy Mountain Hydro Scheme workers. It got them to their worksite, and home again, every day. Their back-breaking work on unforgiving and unpredictable land was shouldered by this unbreakable workhorse. No wonder it's known as the 4WD that built Australia.

Now, more than 50 years on, we're still at work building the nation. Our commercial fleet is still getting the job done everywhere and more Australians rely on us than ever before. From cattle drovers to camel catches, boaties to brickies, our quality, durability and reliability is expected and we strive to deliver it through what we call 'Kaizen'; constant and continual improvement.

### Work hard, work smart.

Practicality and durability, that's our pedigree but these days our commercial vehicles are as renowned as much for their intelligence as for their rugged exterior. Pop the hood or search the cab and you'll find our engineers have advanced the range with some ground-breaking achievements, like the KDSS suspension control that keeps the car steady on the shakiest of surfaces, or the state-of-the-art CRAWL system that keeps a firm grip on the toughest terrain.

You're also likely to experience more comfort features than ever before. Depending on the model you choose to get your job done, you'll have iPod<sup>®(1)</sup> and Bluetooth<sup>™(2)</sup> connectivity, flexible, easy-fold seating configurations and the safety of SRS airbags – just an example of our restlessness for betterment.

We're committed to being a company with world values at heart. As such, the benefits of our pursuits go well beyond the driver when we develop vehicles which work for longer on less. New, fuel-efficient engines, give the same grunt you've come to expect, but more economically and more quietly than ever. So whether putting out fires in the big smoke, or putting in hard yards out bush, the only thing our vehicles aren't producing more of is emissions.

### And still there's work to be done.

We boast the toughest, strongest, and smartest work vehicles ever made, because we've been there before. We've spent the last fifty years working to bring you the best vehicles to tackle the toughest terrain on Earth, and we'll continue to evolve and strive to make each Toyota better than the last.



(1) iPod<sup>®</sup> is a registered trademark of Apple Inc.

(2) The Bluetooth<sup>™</sup> word mark is owned by Bluetooth SIG, Inc. Bluetooth<sup>™</sup> will only operate with telephones enabled with compatible Bluetooth<sup>™</sup> wireless technology (HFP (Hands Free Profile) v1.0 and OPP (Object Push Profile) v1.1 international standards). OPP functionality only works on satellite navigation equipment.

## Modern engine, modern look, the same legendary strength.

The LandCruiser legend follows a path that leads right back to 1957, to the Snowy Mountains Hydro Scheme to be precise. It was here that the very original LandCruiser began forging a name for itself in Australian folklore and the rest, as they say, is history. As the going got tougher, LandCruiser got stronger. So despite whatever conditions LandCruiser owners put their vehicles through, from the Bass Strait pipeline projects to the roughest rural, mining and construction sites, LandCruiser became the one vehicle you could count on.

The workhorses of the LandCruiser line-up come with muscle and a purposeful look. Known as the LandCruiser 70 Series, they have unbelievable grunt courtesy of Toyota's V8 turbo diesel. This big 4.5 litre turbo diesel delivers an awesome 151kW of power and a massive 430Nm of torque, whilst offering impressive fuel economy thanks to some clever Toyota thinking. That makes all these LandCruisers work harder in the dirt and run cleaner, getting a big tick from the tough Euro IV emissions laws.

On the outside, the body has real presence – the wide body design is suitably muscular to accommodate the awesome powerplant. LandCruiser 70 Series also delivers on functionality and comfort and is equipped with a host of standard features.

So we're going to tell you everything you need to know about the three LandCruiser 70 Series models. After that, you'd better put one through its paces, on and off road, to get the complete picture.

# LandCruiser 70 Series

Front Cover: Cab Chassis GXL shown with optional Toyota Genuine tray body.



Cab Chassis GXL shown with optional Toyota Genuine tray body.



# Ready to power through the biggest workload.

This workhorse is powered by Toyota's intercooled V8 turbo diesel, putting LandCruiser even further ahead. With a capacity of 4.5litres and the latest direct injection multi-valve diesel technology, it's an engine that delivers both remarkable performance and efficiency.

The LandCruiser 70 series all feature a huge 151kW power output, which makes those tough jobs easier than you ever thought possible. The maximum power of 151kW comes on strong at a low 3,400rpm. With a huge 430Nm of torque all the way from 1,200 – 3,200rpm, you get quick

acceleration, pulling-power on steep hills and the power you need when you're carrying a full load. Yet with fuel efficiency of just 11.5litres/100km for the Cab Chassis and 11.9litres/100km for the Troop Carrier and Wagon, LandCruiser 70 Series is one worker that's prepared to do more for less pay.<sup>(1)</sup>

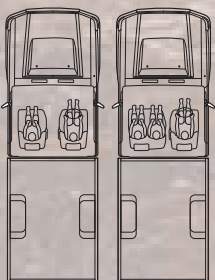
LandCruiser 70's advanced V8 is equipped with a variable vane type turbocharger. That means at low engine speeds you get more instantaneous response with less lag, while at higher revs you get greater power output. Yet it also ensures excellent fuel efficiency and lower

emissions. With quad-cams and multi-valves this advanced V8 breathes easier and is more efficient. In addition, the latest electronic fuel injection together with technology like Exhaust Gas Recirculation (EGR) helps it meet the Euro IV emissions rules, so it's a cleaner machine.

The impressive power is easily manageable thanks to LandCruiser 70's proven 5-speed manual transmission with high and low range, giving you the right ratios for climbing steep slopes and carrying heavy loads. A high capacity, high pressure power steering pump makes it

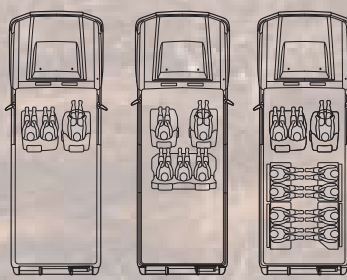


GXL GX/WorkMate



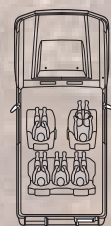
Cab Chassis Seating Arrangements.

WorkMate GXL WorkMate



3, 5 and 11 Seat Troop Carrier Seating Arrangements.

GXL/WorkMate



5 seat Wagon Seating Arrangement.

easier to manoeuvre for effortless turning at lower speeds.

As for the suspension, LandCruiser 70 has a wide front track with a durable stabiliser bar and lateral control rod. In the rear, the 4 door Wagon features a higher spring rate, making LandCruiser 70 more stable and easier to drive even when it's loaded to the gunwales.

#### A Safe Work Place

With the strength of a tough steel body, LandCruiser 70 models help protect you.

Underneath that, a full steel chassis also makes for a strong, stable platform.

While LandCruiser 70 is all go, big powerful ventilated disc brakes all round slow things down in a hurry. A load sensing and bypass valve manages the front to rear brake balance, providing efficient braking when carrying loads. A collapsible steering column and front outboard headrests have been designed to help provide protection in real life emergency situations whilst side intrusion beams help protect inside collisions. All this safety is furthered by driver and front

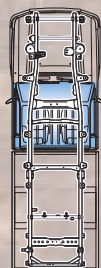
passenger SRS airbags coming standard across the range<sup>(2)</sup>. Also standard throughout are Emergency Locking Retractors (ELR) seatbelts which come standard across the range for outer positions in the front cabin. For the younger apprentices, Child Restraint System (CRS) upper tether anchors are fitted to 4 door Wagons, for easy fitment of child seats.

(1) Fuel consumption will vary depending on driving conditions/style, vehicle condition and options/accessories. Source of fuel consumption data ADR81/02 combined cycle.

(2) Available from July 2009 production.



Wagon GXL shown.



Rigid frame and body structure.



Side impact beams.



Disc brakes.



## It goes almost anywhere, does almost everything.

Don't think for a moment those rugged good looks are just for appearances. That large front bumper not only looks impressive it also leaves you with a great approach angle, giving you the clearance you need when lumbering over rough terrain.

A big 180 litre dual fuel tank in Cab Chassis and Troop Carrier models add up to a super long potential 1500km cruising range, helped along by the economical running of the diesel V8. That means it can potentially take you all the way from Darwin to Alice Springs without stopping for a drink. The LandCruiser 70 Series comes with a dependable 5-speed transmission that has proven itself on Australia's toughest trails. So you have the ratios you need, plus a high and

low range to confidently go up and down steep hills or negotiate loose, undulating trails. It's also geared for comfortable highway cruising when you need to get promptly from A to B. Across the LandCruiser 70 Series, you'll find a seating and cabin arrangement that can carry almost everything and everybody you want. The 2 or 3 seat Cab Chassis lets you choose the tray that best suits your line of work. Troop Carriers can haul 3, 5 or a whole army of 11 people. Or choose the Wagon with comfort and space for 5 adults plus all their gear. The wide opening rear doors on the Wagon and Troop Carrier make for easy loading and unloading of people and heavy gear.

The bodywork has been designed with plenty of glass area to maximise visibility. Come nightfall,

powerful halogen lights show the way ahead, while GXL models have the addition of fog lamps which help show the way ahead in drizzly conditions.

### **The good oil on technology**

Once again Toyota has developed some remarkable engineering advances, adding further credence to the LandCruiser legend. The V8 turbocharged, intercooled diesel represents advanced and proven engineering from Toyota's vast experience with performance engines and diesel technology. It has been engineered to not only work harder but smarter, with quad cams and multi-valves which improve engine breathing and fuel efficiency. A variable vane turbocharger manages the tenuous balance between back





Cab Chassis GXL shown with optional Toyota Genuine tray body.

pressure and boost pressure. Basically, you want a smaller high revving turbocharger for response down low, but a larger capacity unit for power up top. This variable vane unit manages to achieve both, by altering the geometry of the turbine as revs increase. That adds up to more torque for towing and more power on highways. This thinking was first pioneered on muscle cars and now Toyota's making it work even harder.

Mounted above the engine there's an air-to-air intercooler which cools the air going into the engine, by drawing cold air through the bonnet scoop. So with cooler, denser air going into the engine, you get more power out of it. The intercooler also means increased reliability through lower air intake temperatures. A cross

over pipe draws boost from one bank of cylinders to the other, for a balanced turbocharging effect. There are also two fuel coolers, to keep the fuel charge concentrated.

Electronic direct injection and water cooled 'Exhaust Gas Recirculation' (EGR) help reduce emissions. Further efficiencies are gained by using lighter weight aluminium alloy pistons which reduce friction. Of course with less rotating weight, the engine revs freer and easier while engine wear is also reduced. Roller rockers also reduce friction improving fuel efficiency and reducing wear. This advanced V8 is also equipped with a catalytic converter which optimises exhaust flow and further reduces emissions. For longer life, the V8 features Toyota's first ever oil

scavenging pump which works together with the primary oil pump. The aluminium cylinder heads have been carefully heat treated for durability. Even the engine block has been cast using a higher grade graphite iron for greater strength but lighter weight. The crankshaft has been engineered using a special high strength carbon steel to reduce weight, while balance weights limit vibration and noise. Also helping it run quieter is an advanced gear and chain driven timing system.

So if you think an engine that gives you more power from less fuel, while satisfying Euro IV emissions regulations sounds too good to be true, better take one for a test run and find out for yourself.



**TOYOTA SERVICE ADVANTAGE CUTS NEW CAR RUNNING COSTS**

Toyota Service Advantage makes owning your LandCruiser 70 Series even more economical because you are entitled to low cost scheduled servicing. That's up to 6 standard services during the first three years or 60,000km, whichever occurs first. Terms and conditions apply. See your Toyota dealer or [advantage.toyota.com.au](http://advantage.toyota.com.au) for eligibility, pricing and more information. Toyota Service Advantage pricing represents the maximum amount payable for standard scheduled servicing which is as per 'maintenance for normal operating conditions' outlined in the Warranty & Service Handbook's service schedule. Service Advantage eligibility excludes Government and Rental vehicles and certain other exclusions apply.





Troop Carrier GXL shown.



## Hard on the outside, easy on the inside.

Since you'll be doing long hours in your LandCruiser, it's good to know there are plenty of interior comforts going along for the ride. Before you get started, an engine immobiliser is standard to help ensure that no one else can drive your LandCruiser 70 without your say so. The lockable glove box also helps keep your valuables in their place.

The air conditioning blower unit and cooler unit are integrated into one and positioned on the left passenger's side near the cowl, for easy access. The standard audio system incorporates an AM/FM tuner, USB audio input<sup>(1)</sup> and iPod<sup>®(2)</sup> Controls, Bluetooth<sup>™(3)</sup> handsfree capability as well as the essential MP3 compatible CD player, so you can cram plenty on the one disc and let the music work overtime on those long hauls. The hard



Cab Chassis GXL shown.

wearing vinyl seating and vinyl floor covering is easy to clean, that's great when you're in dusty or muddy terrain. Or you may opt for the comfort of fabric trim in GXL models. Whichever way you go, the seats are built with deep cushioning and generous lumbar support to help soak up the bumps and reduce fatigue in tough going.

Maybe the cabin of your LandCruiser 70 is going to be like your on site office. So GXL models are also kitted out with comforts like remote central locking and power windows to make them easier to get along with. The comforts aren't just confined to the cabin. One thing you'll also come to appreciate in the LandCruiser 70 Wagon is the rear suspension which has been designed for drivability and comfort.

(1) Available from July 2009 production.

(2) iPod® is a registered trademark of Apple Inc.

(3) The Bluetooth™ word mark is owned by Bluetooth SIG Inc. Bluetooth™ will only operate with telephones enabled with compatible Bluetooth™ wireless technology (HFP (Hands Free Profile) v1.0 and OPP (Object Push Profile) v1.1 international standards). OPP functionality only works on satellite navigation equipment.

## A team of three specialists.



Cab Chassis GXL shown with optional Toyota Genuine tray body.

### Cab Chassis

Take your pick between three equipment levels in this line-up. WorkMate is fitted out for practicality with a black front bumper, radiator grille and mirrors. 16" steel split rims make for easy tyre changes on site, while steel side steps help you aboard. The practical theme continues with vinyl floor and a bench/bucket seating arrangement trimmed in textured vinyl that comfortably fits three adults.

Next up, the GX gives you the addition of 16" Alloy

Wheels, over fender flares and wide mudguards. For more comfort, step up to the GXL Cab Chassis and you get a chrome grille, roof drip rails, doorhandles and chrome/painted front bumpers. Aluminium side steps and remote central locking help you aboard, while there are two buckets seats for comfort. Fabric seats, door trim inserts and carpet on the floor makes life a bit cosier. Power windows make for easy usage, while front fog lamps and variable intermittent wipers

improve visibility. The standard audio unit is an MP3 compatible CD player with 2 speakers. The audio unit also has USB audio input<sup>(1)</sup> with iPod<sup>®(2)</sup> control and Bluetooth<sup>™(3)</sup> handsfree capability and audio streaming<sup>(1)</sup>. As for optional extras, you can add air conditioning for comfort, while front and rear differential locks mean better grip off road. All models come with standard driver and front passenger SRS airbags<sup>(1)</sup> so you can enjoy all these great features in safety.



Troop Carrier GXL shown.



Wagon GXL shown.

### Wagon

The Wagon is a big, roomy 4 door available in two equipment levels. WorkMate looks the goods with a practical black front bumper, grille and mirrors. It rides on 16" steel wheels while aluminium side steps help you aboard.

On the inside, WorkMate seats five, with bucket seats up front and vinyl floor for practicality. An MP3 compatible CD player with AM/FM radio, USB audio input<sup>(1)</sup> and iPod<sup>®(2)</sup> control as well as

Bluetooth<sup>™(3)</sup> handsfree capability and audio streaming<sup>(1)</sup> is accompanied by 4 speakers for an excellent entertainment experience. In the GXL, the appearance steps up with chrome/painted front and rear bumpers, chrome grille, roof drip mouldings and chrome door handles. Wide 16" Alloy Wheels are capped off by over fender flares. Remote central locking opens the way to an interior with seating for five in fabric trimmed comfort and loop pile carpet.

The stereo system comes with a power antenna, while the windows are power operated.

And since the wagon doubles as a family runabout you won't want to compromise on safety. Driver and front passenger SRS airbags<sup>(1)</sup> are a standard feature. You may consider the optional air conditioning for added comfort. Also optional are front and rear differential locks for extra traction when the going gets tough.

### Troop Carrier

Two spec levels of Troop Carrier and three seating arrangements give you plenty of options. This big roomy design comes with 2 long front doors and a rear 60:40 split barn door arrangement which makes for easy loading.

WorkMate comes with a practical black grille, mirrors and front bumper, front and rear mudflaps and sliding rear windows. There's a barn-type tailgate for easy access and the 16" steel wheels have split rims for outback tyre changes. Up front, there's a bucket seat along with a 2 seat bench layout, with an additional 8 seats in the rear to carry a total of 11 big adults, while an MP3 compatible CD player with AM/FM radio, USB input<sup>(1)</sup> and iPod<sup>®(2)</sup> control as well as Bluetooth<sup>™(3)</sup> handsfree capability and audio streaming<sup>(1)</sup>, keeps them all entertained through

2 speakers. Seats and floor are vinyl. Troop Carrier 3-seater is also available without the rear seats for increased cargo room.

Carry five adults in more comfort aboard the GXL Troop Carrier. It's kitted out with chrome/painted front and rear bumpers, chrome grille, door handles and roof drip rails complete the look.

Remote central locking lets you into the comfort of fabric seating with driver's and front passenger's bucket seats up front, totalling seating for five. Door trims have cloth inserts and floors are carpeted. 4 speakers, a power antenna, power windows and variable speed intermittent wipers are standard along with fog lamps. Safety comes standard across the range

with driver and front passenger SRS airbags<sup>(1)</sup> featured in all models.

Having so much fitted as standard leaves little room for options. What you can add is air conditioning to keep you cool while front and rear differential locks give you sure-footed traction off road.

(1) Available from July 2009 production.

(2) iPod<sup>®</sup> is a registered trademark of Apple Inc.

(3) The Bluetooth<sup>™</sup> word mark is owned by Bluetooth SIG Inc. Bluetooth<sup>™</sup> will only operate with telephones enabled with compatible Bluetooth<sup>™</sup> wireless technology (HFP (Hands Free Profile) v1.0 and OPP (Object Push Profile) v1.1 international standards). OPP functionality only works on satellite navigation equipment.

Toyota Genuine Accessories. For life on the land.



LandCruiser 70 Series Cab Chassis GXL shown in Merlot Red, accessorised with steel bull bar, side rails (front and side pair), superwinch, driving lights, headlamp covers, bonnet protector, front weathershields, canvas seat covers and galvanised steel colour-coded (with chequer plate floor) tray body. All sold separately.





## Toyota Genuine Accessories. For life on the land.

Enhance your LandCruiser 70 Series' practicality and individuality through Toyota's broad range of Toyota Genuine Accessories, all developed to strict quality and performance standards and backed by our Toyota warranty.<sup>(1)</sup>

LandCruiser 70 Series Cab Chassis GXL shown in Merlot Red, accessorised with steel bull bar, side rails (front and side pair), superwinch, driving lights, headlamp covers, bonnet protector, front weathershields, canvas seat covers and galvanised steel colour-coded (with checker plate floor) tray body. All sold separately.



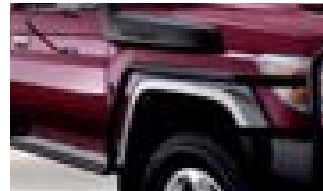
THESE ARE JUST SOME OF THE ACCESSORIES AVAILABLE FOR YOUR LANDCRUISER 70 SERIES. FOR A COMPLETE LIST AND FURTHER DETAILS, PLEASE SEE YOUR TOYOTA DEALER OR VISIT [ACCESSORIES.TOYOTA.COM.AU](http://ACCESSORIES.TOYOTA.COM.AU)



AIRBAG COMPATIBLE ALLOY BULL BAR WITH DRIVING LIGHTS & SUPERWINCH (sold separately)



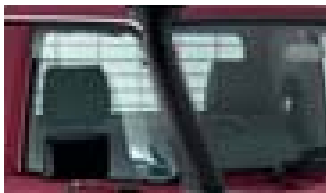
AIRBAG COMPATIBLE STEEL BULL BAR WITH DRIVING LIGHTS & SUPERWICH (sold separately)



SIDE RAILS - FRONT & SIDE PAIR (sold separately)



BONNET PROTECTOR & HEADLAMP COVERS (sold separately)



FRONT WEATHERSHIELDS



SUNVISOR



HEAVY DUTY ROOF RACKS - 2 BAR SET (WITH THIRD BAR) (sold separately)  
Available on Wagon & Troop Carrier models



CARGO BARRIER  
Available on Wagon & Troop Carrier models



HEAVY DUTY GALVANISED STEEL TRAY BODY (COLOUR CODED) - CHECKER PLATE FLOOR  
Available on Cab Chassis models



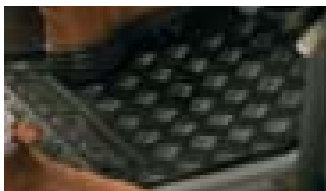
HEAVY DUTY ALLOY TRAY BODY  
Available on Cab Chassis models



TOWBAR 3500kg (braked), 750kg (unbraked)<sup>(2)</sup>, TOWBALL & TRAILER WIRING HARNESS (sold separately)



ALLOY WHEEL LOCK NUT SET



ALL WEATHER RUBBER FLOOR MATS - FRONT



DISPLAY AUDIO SYSTEM INCLUDES 6 IN-DASH MP3/CD CHANGER & RADIO WITH BLUETOOTH<sup>(3)</sup> COMMUNICATIONS, USB/AUXILIARY AUDIO INPUT<sup>(4)</sup>/IPOD<sup>(4)</sup>



SATELLITE NAVIGATION<sup>(5)</sup> AUDIO SYSTEM INCLUDING 4 IN-DASH MP3 CD WITH BLUETOOTH<sup>(3)</sup> HANDSFREE COMMUNICATIONS



TYRE PRESSURE MONITORING SYSTEM

## TOYOTA GENUINE ACCESSORIES ARE COVERED BY OUR TOYOTA WARRANTY<sup>(1)</sup>

Some Toyota Genuine Accessories are not applicable to all LandCruiser 70 models. See your Toyota Dealer for advice regarding Toyota Genuine Accessories. Pictured Accessories are all sold separately. For a comprehensive guide on the entire range of Toyota Genuine Accessories, visit our website at [accessories.toyota.com.au](http://accessories.toyota.com.au).

(1) All Toyota Genuine Accessories purchased and fitted to a Toyota are warranted for the remainder of the New Vehicle Warranty or 12 months, whichever is greater. Toyota Genuine Accessories purchased from an authorised Toyota Dealer over the counter are warranted from the date of purchase for 12 months. Conditions apply. All warranties are additional to the implied warranties under the Trade Practices Act 1974.

(2) Towbar capacity subject to regulatory requirements, towbar design, vehicle design and towing equipment limitations.

(3) The Bluetooth<sup>™</sup> word mark is owned by Bluetooth SIG, Inc. Bluetooth<sup>™</sup> will only operate with telephones enabled with compatible Bluetooth<sup>™</sup> wireless technology (HFP (Hands Free Profile) v1.0 and OPP (Object Push Profile) v1.1 international standards). OPP functionality only works on satellite navigation equipment.

(4) iPod<sup>®</sup> is a registered trademark of Apple Inc.

(5) Current Navigation mapping database encompasses major capital and primary national road networks, as well as offering some coverage of regional areas.

(6) Available from July 2009 production.

# A SERVICE TO MEET ALL OF YOUR NEEDS.



## The Toyota Guarantee.

We are confident that all of our vehicles will be as reliable and dependable as you need them to be. We understand that a new car purchase can often be a big decision. You need to feel confident that not only are you making the right decision now, but you are making a decision that won't end up costing you more in the future. That is why every new Toyota is proudly backed by a 3 year/100,000km warranty<sup>(1)</sup> (whichever occurs first), which provides you with peace of mind and care free motoring.

 **TOYOTA WARRANTY**



## Extend your peace of mind.

When you purchase your new or used<sup>(2)</sup> Toyota, you can extend your original factory warranty<sup>(3)</sup> for up to 3 years. Providing you protection from unexpected repair bills and more importantly a little extra peace of mind.

Should you break down we also offer Roadside Assist, a reliable breakdown service with round the clock reassurance and assistance.

Toyota Extra Care is that extra helping hand when you need it most. For more details visit [toyotaextracare.com.au](http://toyotaextracare.com.au)

 **TOYOTA EXTRA CARE**



## All the insurance coverage you could need.

Could you afford costly repairs or having to replace your vehicle altogether? At Toyota Insurance<sup>(4)</sup> we understand that your vehicle is a critical part of your life and can offer you a motor insurance solution designed specifically for Toyota vehicles.

Our comprehensive motor vehicle insurance benefits include:

- Replacement of your new Toyota if it is a total loss so long as it is less than 3 years old and has traveled less than 100,000kms
- Genuine new Toyota parts replacement promise for Toyota vehicles less than five years old since the date of first registration
- Genuine Toyota quality repair guarantee for the duration of your vehicle ownership

Toyota Insurance also goes further by offering Finance Gap Insurance and Payment Protection Insurance.

Visit [toyotainsurance.com.au](http://toyotainsurance.com.au) for more details about the coverage we offer.

 **TOYOTA INSURANCE**



## Finance to get you in the driver's seat.

Toyota Financial Services<sup>(5)</sup> can offer you a range of easy vehicle finance options available for you to organise conveniently at your preferred Toyota dealership.

Whether you require a simple personal vehicle loan, a novated lease for you or your employees, or serviced leasing on your small-business tool of trade vehicles we can help.

Toyota Financial Services is the best way to finance your Toyota, visit [toyotafinance.com.au](http://toyotafinance.com.au) to find out why.

 **TOYOTA**  
**FINANCIAL SERVICES**

[toyota.com.au](http://toyota.com.au)

(1) Conditions apply. All warranties are additional to implied warranties under the Trade Practices Act 1974.

(2) Used vehicle being a vehicle less than three years old and has travelled less than 90,000kms since its purchase as a new vehicle (conditions apply).

(3) Extended Factory Warranty is not available for all vehicles (for example Toyota vehicles used as a taxi or for rental and courier purposes). Please ask your participating Toyota Dealership about eligibility. Terms and conditions apply.

(4) Toyota Insurance products are underwritten by Aioi Insurance Co. Ltd. (Aioi), ABN 39 096 302 466 AFSL Number 254489 (Aioi). Aioi is a member of the Toyota Group of Companies. A Product Disclosure Statement (PDS) is available from participating Toyota Dealers or from Toyota Insurance by calling 137 200. You should consider the PDS before making a decision about this product. Terms and conditions apply.

(5) Toyota Financial Services is a division of Toyota Finance Australia Limited ABN 48 002 435 181.

 **TOYOTA LANDCRUISER 70 SERIES**  
oh what a feeling!



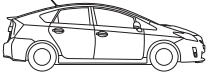
Yaris



Corolla



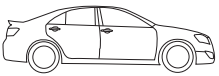
RAV4



Prius



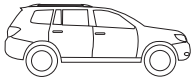
Camry



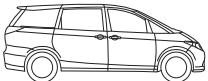
Aurion



Hybrid Camry



Kluger



Tarago



Prado



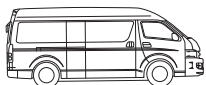
LandCruiser 200 Series



HiLux



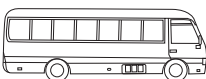
LandCruiser 70 Series



Commuter Bus



HiAce



Coaster

