

 **TOYOTA COROLLA**  
oh what a *feeling!*

The World's Most Popular Small Car



[toyota.com.au](http://toyota.com.au)

# IMPRESSIVELY EQUIPPED COROLLA HATCH

An inspiring interior, contemporary European design and advanced engineering are all hallmarks of the stylish Corolla Hatch. And with a 100kW Dual VVT-i engine paired with a choice of six-speed manual or four-speed automatic, Corolla has the performance, fuel efficiency and environmental credentials to match its impressive aesthetics. And of course, world class safety comes standard with Vehicle Stability Control (VSC) and Traction Control (TRC)<sup>†</sup> on all models.

Available in four models – from the well-appointed entry level Ascent up through the generously specified Conquest, the sporty Levin SX and the top grade luxury sports Levin ZR – there's a Corolla to suit every driver's taste.

# PEACE OF MIND COMES STANDARD

## PERFORMANCE

Toyota has developed a 100kW 1.8 litre engine featuring advanced Dual VVT-i (Variable Valve Timing with intelligence) technology delivering excellent acceleration, high fuel efficiency and outstanding environmental performance.

## STYLE WITH SAFETY

With seven SRS airbags as standard on all models\*, Corolla has an impressive array of airbags. Not only does Corolla feature both driver and front passenger airbags and front side SRS airbags, Corolla is also equipped with full length curtain shield SRS airbags and driver's knee airbag.

Toyota's MICS (Minimal Intrusion Cabin System), Whiplash Injury Lessening (WIL) front seats as well as Toyota's Safe-T-Cell, give Corolla more advanced cabin safety than ever before.

Standard equipment includes four-wheel disc brakes, Vehicle Stability Control (VSC) and Traction Control (TRC)<sup>†</sup> and a world class brake package known as Active Braking with intelligence (AB-i). AB-i consists of Anti-Skid Brakes (ABS), Electronic Brake-force Distribution (EBD) and Brake Assist (BA).

Corolla was designed to exceed the world's toughest crash safety standards as part of Toyota's GOA (Global Outstanding Assessment) program, which delivers an advanced collision-safety body structure.

<sup>†</sup> VSC and TRC standard on all models and available from October 2009 production. \*Standard on Levin ZR Model. <sup>^</sup>Standard on Levin Models. \*7 SRS airbags available from September 2010 production.



Front cover: Levin ZR in Ink shown. Above: Conquest in Tungsten shown.

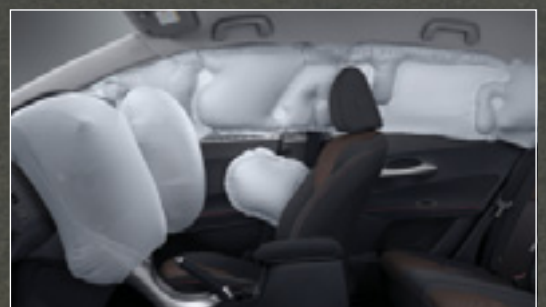




Smart Start button.  
Standard on Levin ZR  
model only



2-dial type Optitron display<sup>^</sup>



Dual front SRS airbags, front seat mounted side SRS airbag,  
driver's knee SRS airbag and curtain shield SRS airbag\*



# GENUINE ACCESSORIES

Even though it's one of the best appointed cars in its class, you can still make your mark on your Corolla with any one of a number of Toyota Genuine Accessories to add style, safety or functionality.



Levin ZR pictured is accessorised with Toyota Genuine 17" x 7" Kappa Alloy Wheels, ParkAssist – Clearance Parking Sensors, Bonnet Protector, Front Weathershields, Headlamp Covers and Aero Roof Racks.



Kayak Carrier



Pro Ride Bicycle Carrier



Deluxe Ski & Snowboard Carriers – 4 or 6



Atlantis 200 Roof Pod



Front Weathershields (sold separately)



ParkAssist<sup>+</sup> – Reverse Parking Sensors – 4 head kit & Clearance Parking Sensors – 2 head kit (sold separately)



Bonnet Protector & Headlamp Covers (sold separately)



Towbar<sup>+</sup> – 1300kg (braked capacity), Towball & Trailer Wiring Harness (sold separately)



Mud Guard (set of 2) Available for Ascent & Conquest only



Alloy Wheel Lock Nut Set Available for Conquest, Levin SX, Levin ZR & all accessory wheels



15" x 6.5" Atlas Alloy Wheel Available for Ascent only



16" x 7" Raptor Alloy Wheel – Painted Finish



16" x 7" Raptor Alloy Wheel – Machined Finish



17" x 7" Kappa Alloy Wheel



Boot Liner



Seat Covers – Dark Grey (front & rear set sold separately) Safety warning: Fitment of Front Seat Covers which are not compatible with Front Seat Side airbags may adversely affect Front Seat Side airbag deployment & might result in serious injury.



Carpet Floor Mats – Grey



Display Audio System Includes 6 in-dash MP3/CD Changer & Radio with Bluetooth™\* featuring Handsfree capabilities & Audio Streaming, and is compatible with (optional) Rear View Camera<sup>+</sup> and some iPods<sup>+</sup>, MP3 and USB sticks<sup>+</sup>.



FollowMe<sup>+</sup> Sound & Navigation System<sup>+</sup> Includes Bluetooth™\* Handsfree capabilities, Video and is compatible with (optional) Rear View Camera<sup>+</sup> and some iPods<sup>+</sup>, MP3 and USB sticks<sup>+</sup>.



Satellite Navigation Audio System<sup>+</sup> Includes 4 in-dash MP3/CD Changer & Radio with Bluetooth™\* Handsfree Communications & (optional) Rear View Camera Compatibility<sup>+</sup>.

 **TOYOTA GENUINE**  
PARTS, SERVICE & ACCESSORIES

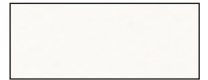
Toyota Genuine Accessories are covered by our Toyota Warranty\*. Some Toyota Genuine Accessories are not applicable to all Corolla Hatch models. See your Dealer for advice regarding Toyota Genuine Accessories. Pictured Accessories are all sold separately. For a comprehensive guide on the entire range of Toyota Genuine Accessories, visit our website at accessories.toyota.com.au \*All Toyota Genuine Accessories purchased and fitted to a Toyota are warranted for the remainder of the New Vehicle Warranty or 12 months, whichever is greater. Toyota Genuine Accessories purchased from an authorised Toyota Dealer over the counter are warranted from the date of purchase for 12 months. Conditions apply. All warranties are additional to the implied warranties under the Trade Practices Act 1974. <sup>+</sup>ParkAssist and Rear View Camera are designed as a driver assist device only and should not be used as a substitute for skilled driving and safe parking practices. The area into which the vehicle is to be reversed must be visually monitored by the driver while parking. <sup>†</sup>iPod® is a registered trademark of Apple Inc. <sup>‡</sup>Optional FollowMe iPod® kit available. iPod® is a registered trademark of Apple Inc. <sup>^</sup>Current navigation mapping database encompasses major capital and primary national road networks, as well as offering some coverage of regional areas. <sup>#</sup>The Bluetooth™ word mark is owned by The Bluetooth SIG, Inc. Not all devices will be compatible and functionality will vary depending on the device. <sup><</sup>Towing capacity subject to regulatory requirements, towbar design, vehicle design and towing equipment limitations. <sup>9</sup>Not all devices will be compatible and functionality will vary depending on the device.



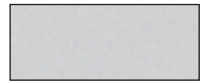
Levin ZR Hatch interior shown

Levin ZR Hatch with 60:40 rear split

#### EXTERIOR COLOURS



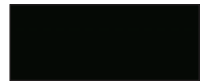
Glacier White (040)



Silver Pearl (1F7)\*



Graphite (1G3)\*



Ink (209)\*



Wildfire (3R3)\*



Shimmer (8S1)\*



Tungsten (8T4)\*



Tidal Blue (8T7)\*

(Not available on Ascent and Conquest models)

#### INTERIOR TRIM COLOURS



Atom-Dark Grey Galea

Available on Ascent, Conquest and Levin SX



Tatami-Dark Grey Galea

Available on Levin ZR

Note: Toyota Australia reserves the right to vary and discontinue from time to time the interior and exterior colours, trims and colour/trim/model combinations currently available. Colours and trims displayed here are a guide only and may vary from actual colours due to printing/display process. See your Toyota dealer to confirm colour/trim/model availability when ordering your vehicle.

\*Toyota Mica/Metallic paint is an optional extra at additional cost.

# COMFORT, CONVENIENCE AND LUXURY

Developed in Europe, the newly refined Corolla has been designed to impress.

Hands-free mobile phone use is made possible through Bluetooth™ technology integrated within the audio system, which can also conveniently store your six most frequently dialled numbers for speed dialling. Improved technology means you can also stream audio direct to the stereo system from your Bluetooth™ enabled mobile phone or MP3 player. A USB and 3.5mm AUX input allows for easy connection for some portable audio players, iPod® or USB memory sticks\*.

Smart Entry and Smart Start technology in the Levin ZR allows you to enter, start and lock the vehicle without having to remove the key from your pocket.

The interior of the Corolla Hatch breaks away from traditional car design with its ergonomically designed “flying buttress” centre console and slim seats. With intuitive use of space, every part of the Corolla’s interior has been designed for driving pleasure and comfort.

Tilt and telescopic steering improves driver comfort and enhances driving posture, resulting in reduced driver fatigue. Cruise control is also available on all grades either as standard or as an optional extra.

A premium steering wheel with audio controls and a premium sports gearshift is also available on all models.

Inside the cabin, the Corolla Hatch has been designed to maximise space. With up to an impressive 26 storage recesses and 350 litre capacity, luggage space is generous. Plus, 60:40 split fold seats allow you to carry long objects while still carrying two passengers in the rear of the car.

^The Bluetooth™ word mark is owned by The Bluetooth SIG, Inc. Not all devices will be compatible and functionality will vary depending on the device.

~iPod® is a registered trademark of Apple Inc.

\*Not all devices will be compatible and functionality will vary depending on the device.



## COROLLA HATCH TECHNICAL SPECIFICATIONS

### ENGINE

- Euro IV compliant
- Engine type – Petrol
- Engine code – 2ZR-FE
- Engine displacement – 1798cc
- Engine configuration – 4 cylinder in-line
- Valve train – 16-valve DOHC with Dual VVT-i

### VALVE MECHANISM

- Dual Variable Valve Timing with intelligence (VVT-i)
- Max. power – 100kW/6000rpm
- Max. torque – 175Nm/4400rpm

### FUEL

- Fuel system – Electronic Fuel Injection (EFI)
- Fuel type – 91 RON unleaded
- Fuel economy – Manual 7.3 L/100km<sup>§</sup>
- Fuel economy – Automatic 7.4 L/100km<sup>‡</sup>
- Fuel economy – Levin ZR Automatic 7.5 L/100km<sup>‡</sup>
- ‡ Fuel economy figure applies to Ascent, Conquest and Levin SX automatics only
- § Fuel consumption will vary depending on driving conditions / style, vehicle conditions and options / accessories. Source of fuel consumption data: ADR8102 combined cycle

### TRANSMISSION

- Transmission – six-speed manual or four-speed automatic

### STEERING

- Steering system – Rack and pinion
- Power steering – Electric
- Turns lock to lock – 2.9
- Turning circle at kerb – 10.4m

### BRAKES

- Front – Ventilated discs 275mm
- Rear – Solid discs 259mm
- Active Braking with intelligence (AB-i) incorporating Anti-skid Braking System (ABS) with Electronic Brake-force Distribution (EBD) and Brake Assist (BA)

### SUSPENSION

- Front – L-arm type MacPherson Strut
- Rear – High rigidity torsion beam

### DIMENSIONS

- Overall length – 4245mm
- Overall width – 1760mm
- Overall height – 1515mm
- Wheelbase – 2600mm
- Front and rear track – 1525mm/1522mm<sup>#</sup>
- Ground clearance – 140mm
- #Dimensions for 16-inch wheels

### WEIGHTS/CAPACITIES

- Seating capacity – 5
- Fuel tank capacity (litres) – 55

### TARE MASS (KG)<<

- Ascent manual – 1260
- Ascent automatic – 1295
- Conquest manual – 1260
- Conquest automatic – 1295
- Levin SX manual – 1260
- Levin SX automatic – 1295
- Levin ZR manual – 1280
- Levin ZR automatic – 1315
- <<Weights are nominal and will vary depending on options and accessories fitted

### TOWING CAPACITY††

- Without trailer brakes – 450kg
- With trailer brakes – 1300kg
- †† Towing capacity is subject to regulatory requirements, towbar design and towing equipment limitation

## ASCENT STANDARD FEATURES

### EXTERIOR

- Body coloured front and rear bumpers
- Body coloured power fold exterior mirrors
- Body coloured door handles
- Small rear spoiler
- 15-inch steel wheels
- Spare steel wheel

### INTERIOR

- Front seat height adjustable headrests
- 60/40 split fold rear seat
- 2 stage reclining mechanism for rear seats
- Telescopic and tilt steering column adjustment
- 3 rear seat height adjustable headrests
- Air conditioning with pollen filter
- Front power windows with Driver Auto up/down
- Rear power windows\*
- 3-spoke urethane steering wheel
- Cigarette lighter and ashtray
- Manual front seats slide, recline and height adjustment on driver's seat

### INSTRUMENTS AND CONTROLS

- Tachometer
- Front variable intermittent windscreen wipers
- Rear window demister

### STORAGE

- Dual front passenger side glove box
- Centre console with storage box lid
- Front & rear door pockets
- Retractable cup holder for driver & front passenger
- Overhead dual sunglasses holder

### LIGHTING

- Door operated interior dome lamp with delay

### FRONT MAP LAMPS

- Illuminated ignition
- Illuminated glove box
- Luggage compartment lamp

### SOUND SYSTEM\*

- Bluetooth™ handsfree compatible single disc in-dash CD changer with MP3/CD compatibility and AM/FM tuner
- USB input for some iPod®/USB memory sticks\*
- AUX 3.5mm audio input for portable audio players\*
- 6 speakers

### SAFETY

- Active Braking with intelligence (AB-i) incorporating Anti-skid Braking System (ABS) with Electronic Brake-force Distribution (EBD) and Brake Assist (BA)
- Global Outstanding Assessment (GOA) body
- Toyota Safe-T-Cell
- Driver and front passenger SRS airbags
- Dual front side airbags
- Dual full length curtain shield SRS airbags\*
- Driver's knee SRS airbag\*
- Driver and front passenger pre-tensioning and force limiting seatbelts with Emergency Locking Retractor (ELR)
- Whiplash Injury Lessening (WIL) Front Seats
- Vehicle Stability Control (VSC) and Traction Control (TRC)†
- 3-point lap-sash rear seatbelts
- Pedestrian safety enhancing bonnet

### CHILD SAFETY

- Automatic Locking Retractor (ALR) rear seatbelts for child seats
- Child restraint anchorage points
- Door ajar warning

### SECURITY

- Engine immobiliser
- Remote central locking
- Key in ignition/door lockout override

### OPTIONS AVAILABLE ON ASCENT

- Cruise Pack consisting of cruise control, premium steering wheel with built in audio and cruise control buttons and a premium sports shift lever
- Mica/Metallic Paint

## CONQUEST FEATURES IN ADDITION TO ASCENT

### EXTERIOR

- 16-inch alloy wheels
- Full size spare steel wheel
- Moonroof\*

### INTERIOR

- Premium sports shift lever
- Premium bound steering wheel with audio controls
- Cruise control

### SOUND SYSTEM\*

- Bluetooth™ handsfree compatible 6-disc in-dash CD changer with LCD display, MP3/CD compatibility and AM/FM tuner

### OPTIONS AVAILABLE ON CONQUEST

- Mica/Metallic Paint

## LEVIN SX FEATURES IN ADDITION TO ASCENT

### EXTERIOR

- Front fog lights
- 16-inch alloy wheels
- Full size spare steel wheel
- Body coloured side skirts
- Larger rear spoiler

### INTERIOR

- Premium bound sports shift lever
- Premium bound steering wheel with audio controls
- Cruise control
- Optitron Combimeter instrument display

### SOUND SYSTEM\*

- Bluetooth™ handsfree compatible 6-disc in-dash CD changer with LCD display, MP3/CD compatibility and AM/FM tuner

### OPTIONS AVAILABLE ON LEVIN SX

- Mica/Metallic Paint

## LEVIN ZR FEATURES IN ADDITION TO LEVIN SX

### EXTERIOR

- Rain sensing wipers
- Auto headlamps
- HID (High Intensity Discharge) headlamps
- Moonroof\*

### INTERIOR

- Climate controlled air conditioning
- Electro-chromatic interior mirror
- Smart Entry and Start System

### SAFETY

- Anti theft alarm

### OPTIONS AVAILABLE ON LEVIN ZR

- Mica/Metallic Paint

†VSC and TRC standard on all models and available from October 2009 production.

\*The Bluetooth™ word mark is owned by The Bluetooth SIG, Inc. Not all devices will be compatible and functionality will vary depending on the device.

†iPod® is a registered trademark of Apple Inc.

>Available from October 2009 production.

\*Available from September 2010 production.

\*Not all devices will be compatible and functionality will vary depending on the device.

## TOYOTA SERVICE ADVANTAGE CUTS NEW CAR RUNNING COSTS

Toyota Service Advantage makes owning your Corolla even more economical because you are entitled to low cost scheduled servicing. That's up to 6 standard services during the first three years or 60,000km, whichever occurs first. Terms and conditions apply. See your Toyota dealer or [advantage.toyota.com.au](http://advantage.toyota.com.au) for eligibility, pricing and more information. Toyota Service Advantage pricing represents the maximum amount payable for standard scheduled servicing which is as per 'maintenance for normal operating conditions' outlined in the Warranty & Service Handbook's service schedule. Service Advantage eligibility excludes Government and Rental vehicles and certain other exclusions apply.

IMPORTANT NOTICE - Please Read: Toyota Australia has used its best endeavours to ensure brochure information is correct at time of print. When ordering accessories, you must check with your authorised Toyota Dealer to ensure the accessory's design, features and colours are available and will fit your vehicle. Accessory colours shown may vary from the actual colours due to the printing process. Certain accessories when fitted will require the removal of standard equipment. Standard equipment may be retained by Toyota. Toyota Australia reserves the right to change, without notice, at any time prices, colours, materials, equipment, specifications and discontinue colours/models. To the extent allowed by law, Toyota Australia will not be liable for any damage, loss or expense incurred as a result of reliance on this brochure. Distributed nationally (other than in Western Australia) by Toyota Motor Corporation Australia Limited ABN 64 009 686 097, 155 Bertie St, Port Melbourne 3207. Toyota Australia makes no warranties regarding (and will not be liable for) the accuracy of materials distributed in Western Australia. Part No. COROLLA5ECT10105V. VALID 8165. Printed October 2010.



CAPPED PRICE SERVICING

 **TOYOTA**  
oh what a feeling!