

This Brochure is prepared by Daimler AG and it predominantly reflects the capabilities and performance of vehicles sold in Europe. Some characteristics, capabilities, performance features and optional extras (e.g. towing systems) may not be available or may not apply in Australia or under Australian conditions. The information in this Brochure is therefore indicative, illustrative and provided only for guidance and should not be relied on. To obtain current and accurate information on a vehicle and any options applicable to Australia, contact your local authorised Mercedes-Benz dealer.



Mercedes-Benz



Genuine accessories
for the C-Class Coupé



Mercedes-Benz

Contents

004	Exterior Light-alloy wheels Wheel accessories
012	Telematics Multimedia Navigation Telephony
018	Interior Interior appointments Child safety
024	Cargo & Care Carrier systems Boot accessories
036	Quality & Safety
038	Collection Personal accessories
042	AMG Bodystyling Light-alloy wheels Interior
046	Index





RS

S VK 1000



01



Exterior

Light-alloy wheels
Wheel accessories

01 Redali | **incenio** 43.2 cm (17-inch)
5-spoke wheel

Stylish variations on the theme of agility

Nothing alters the visual performance of a car more than expressive wheel design. Here you can see a range of variations on the wheel, from sportily dynamic to harmoniously elegant.

Whichever you choose, each stylish model is designed to help you express your own personal interpretation of the Mercedes-Benz Coupé.

01 **incenio** 7-spoke wheel

Finish: available in shadow chrome (pictured below) and palladium silver/high-sheen (pictured on cover)

Wheel: 7.5J x 17 ET 47

Tyre: 225/45 R17

A204 401 6902 7X29 (shadow chrome)

A204 401 6902 7X19 (palladium silver/high-sheen)

Option for rear axle:

Wheel: 8.5J x 17 ET 58

Tyre: 245/40 R17

A204 401 7002 7X29 (shadow chrome)

A204 401 7002 7X19 (palladium silver/high-sheen)

02 Proserpina | **incenio** 5-spoke wheel

Finish: available in sterling silver (pictured) and titanium silver

Wheel: 7.5J x 17 ET 47

Tyre: 225/45 R17

A204 401 2702 9709 (sterling silver)

A204 401 2702 9765 (titanium silver)

Option for rear axle:

Wheel: 8.5 J x 17 ET 47

Tyre: 245/40 R17

A204 401 2802 9709 (sterling silver)

Wheel: 8.5 J x 17 ET 58

Tyre: 245/40 R17

A204 401 2802 9765 (titanium silver)



Exterior

incenio light-alloy wheels

03 Redali | **incenio** 5-spoke wheel

Finish: titanium silver/high-sheen

Wheel: 7.5J x 17 ET 47

Tyre: 225/45 R17

A204 401 6002 7X07

Option for rear axle:

Wheel: 8.5J x 17 ET 58

Tyre: 245/40 R17

A204 401 6102 7X07



03 | 43.2 cm | 17"



04 | 45.7 cm | 18"



05 | 40.6 cm | 16"



06 | 40.6 cm | 16"

04 Pulaha | **incenio** 5-twin-spoke wheel

Finish: sterling silver

Wheel: 7.5J x 18 ET 47 | Tyre: 225/40 R18

A204 401 2902 9709

Option for rear axle:

Wheel: 8.5J x 18 ET 58 | Tyre: 245/35 R18

A204 401 3002 9709

Wheel: 8.5J x 18 ET 54 | Tyre: 255/35 R18

A204 401 5402 9709

05 Pristix | **incenio** 7-spoke wheel

Finish: available in titanium silver (pictured) and sterling silver

Wheel: 7J x 16 ET 43.5 | Tyre: 205/55 R16

A204 401 6802 9765 (titanium silver)

Wheel: 7J x 16 ET 43 | Tyre: 205/55 R16

A204 401 2602 9709 (sterling silver)

06 Balodis | **incenio** 10-spoke wheel

Finish: champion silver

Wheel: 7J x 16 ET 43 | Tyre: 205/55 R16

B6 647 4525



01 5-spoke wheel

Finish: titanium silver

Wheel: 7.5 J x 17 ET 47 | Tyre: 225/45 R17
A204 401 8702 9765

Option for rear axle:

Wheel: 8.5 J x 17 ET 58 | Tyre: 245/40 R17
A204 401 9002 9765

02 Multi-spoke wheel

Finish: titanium silver

Wheel: 7.5 J x 17 ET 47 | Tyre: 225/45 R17
A204 401 8102 9765

Option for rear axle:

Wheel: 8.5 J x 17 ET 58 | Tyre: 245/40 R17
A204 401 8202 9765

03 5-twin-spoke wheel

Finish: titanium silver

Wheel: 7.5 J x 17 ET 47 | Tyre: 225/45 R17
A204 401 7602 9765

Option for rear axle:

Wheel: 8.5 J x 17 ET 58 | Tyre: 245/40 R17
A204 401 7702 9765

04 10-spoke wheel

Finish: titanium silver

Wheel: 7.5 J x 17 ET 47 | Tyre: 225/45 R17
A204 401 8002 9765

05 5-Y-spoke wheel

Finish: titanium silver

Wheel: 7.5 J x 17 ET 47 | Tyre: 225/45 R17
A204 401 5802 9765

06 7-twin-spoke wheel

Finish: titanium silver

Wheel: 7 J x 16 ET 43 | Tyre: 205/55 R16
A204 401 7102 9765

Wheel: 7.5 J x 17 ET 47 | Tyre: 225/45 R17
A204 401 7402 9765

07 5-twin-spoke wheel

Finish: titanium silver

Wheel: 7 J x 16 ET 43 | Tyre: 205/55 R16
A204 401 7202 9765

Wheel: 7.5 J x 17 ET 47 | Tyre: 225/45 R17
A204 401 7502 9765

08 7-spoke wheel

Finish: titanium silver

Wheel: 7 J x 16 ET 39 | Tyre: 195/60 R16
A204 401 1002 9765

Wheel: 7 J x 16 ET 43 | Tyre: 205/55 R16
A204 401 1102 9765

09 5-twin-spoke wheel

Finish: titanium silver

Wheel: 7.5 J x 17 ET 47 | Tyre: 225/45 R17
A204 401 7802 9765

Option for rear axle:

Wheel: 8.5 J x 17 ET 58 | Tyre: 245/40 R17
A204 401 7902 9765

10 Multi-spoke wheel

Finish: titanium silver

Wheel: 7.5 J x 16 ET 53 | Tyre: 225/55 R16
A204 401 7302 9765



Because of differences in national regulations, various different versions of each vehicle exist. Please also bear in mind that vehicle development is permanently ongoing. As a result, not all of the wheel/tyre combinations shown in this brochure will be approved for your particular Mercedes-Benz.

Your Mercedes-Benz dealer, however, has access to constantly updated information on every Mercedes-Benz wheel, including the relevant technical inspection findings and licensing conditions, and will be happy to advise you

Exterior

Mercedes-Benz
light-alloy wheels





01 | 43.2 cm | 17"



02 | 43.2 cm | 17"



03 | 43.2 cm | 17"



04 | 40.6 cm | 16"
43.2 cm | 17"



05 | 40.6 cm | 16"

01 Multi-spoke wheel

Finish: titanium silver

Wheel: 7.5J x 17 ET 47 | Tyre: 225/45 R17

A204 401 1202 9765

Option for rear axle:

Wheel: 8.5J x 17 ET 58 | Tyre: 245/40 R17

A204 401 0102 9765

02 5-twin-spoke wheel

Finish: titanium silver

Wheel: 7.5J x 17 ET 47 | Tyre: 225/45 R17

A204 401 0402 9765

03 7-twin-spoke wheel

Finish: titanium silver

Wheel: 7.5J x 17 ET 47 | Tyre: 225/45 R17

A204 401 0502 9765

Option for rear axle:

Wheel: 8.5J x 17 ET 58 | Tyre: 245/40 R17

A204 401 0302 9765

04 12-spoke wheel

Finish: titanium silver

Wheel: 7J x 16 ET 43 | Tyre: 205/55 R16

A204 401 0602 9765

Wheel: 7.5J x 17 ET 47 | Tyre: 225/45 R17

A204 401 0002 9765

05 7-spoke wheel

Finish: titanium silver

Wheel: 7.5J x 16 ET 53 | Tyre: 225/50 R16

A204 401 0202 9765



Choose your favourite wheels online

Our Accessories Configurator shows you at a click of the mouse how the various Mercedes-Benz light-alloy wheels will look on your vehicle. Visit our website at www.mercedes-benz-accessories.com



Hub caps

Protect the hub from dirt. Available in the following versions:

- 06 classic Roadster design in blue
- 07 classic Roadster design in black
- 08 black with chrome star
- 09 sterling silver with chrome star
- 10 titanium silver with chrome star

11 Valve caps

12 Rim locks

Set consisting of coded key and one lock per wheel

Wheel bolts | not pictured

13 Tyre pressure gauge

Compact design. Saves readings. Suitable for all tyre valves (including cycle tyres). Keeping tyres at the optimum pressure saves fuel and reduces tyre wear. Supplied with leather pouch

14 Snow chain systems

The RUD-matic DISC snow chain has a user-friendly design and can be fitted and removed quickly. With extra-reinforced chain links for the toughest conditions and excellent traction on snow and ice, it is a reliable companion on wintry roads

15 Mud flaps

Protect the underbody and the sides of the car from loose chippings and dirt

Exterior

Mercedes-Benz
light-alloy wheels
Wheel accessories

01

8:08

Konrad-Adenauer-Strasse

km 1.8

h 0:03

0 m

50

14

10



Telematics

Multimedia
Navigation
Telephony

01 Becker® MAP PILOT

Well connected

For aspiring executives networking is key. And the telematics solutions which feature in the genuine accessories range offer a whole wealth of ways to stay in touch – from the internet to Convenience Telephony. Make your Mercedes-Benz partner your first port of call for further advice.

01



01 Becker® MAP PILOT

Transform your Audio 20 CD radio into a high-performance, easy-to-use navigation system. Becker MAP PILOT uses the standard-fit screen and is conveniently operated via the vehicle controller and the Audio 20 CD keypad. The plug-in navigation module can be connected to your PC via USB to download the latest updates from the Becker website

Available in Europe only



02 COMAND Online multimedia system with 6-DVD changer

High-performance multimedia system with 6-DVD changer, hard-drive navigation system, telephone keypad and internet browser, shown on high-resolution, 17.8 cm colour display.

- Navigation system with 2D/3D map views, Speed Limit Assist and automatic congestion avoidance (TMC Pro)
- Internet access when vehicle is stationary
- MUSIC REGISTER with 10 GB storage for diverse audio files (MP3, WMA, AAC), USB interface incl. CD cover display and AUX-IN connection (in centre armrest), Bluetooth interface with hands-free function and audio streaming for music playback, slot for SD memory cards, DVD Video
- LINGUATRONIC voice-operated control system for audio, phone and navigation

03 Europe navigation DVD for COMAND Online

04 SD memory card

The COMAND Online in your C-Class Coupé features a slot for SD memory cards. Use the SD memory card as a convenient way to play music



Telematics

Navigation

Rediscover navigation. *In recent years integral navigation has made journeys more relaxed, less time-consuming and, above all, safer. If you want to continue to enjoy these advantages to the full, we recommend that you regularly replace the navigation DVD in your navigation system with the latest version. Ensuring that the data you're using matches the roads you're travelling on. And that the only surprises you encounter during your journey are of a pleasant nature. The data for the Mercedes-Benz navigation systems is regularly updated. Please ask your Mercedes-Benz partner for the latest navigation DVDs*

01



01 Mobile-phone holders

When it comes to selecting a mobile for your Mercedes-Benz, you've never had so much choice. One "click" is all it takes to replace the mobile-phone holder. It takes a matter of seconds and is as straightforward as inserting the mobile into the holder itself.

Changing your mobile and even alternating between different models of mobile no longer presents a problem. There are no compromises when it comes to convenience-enhancing telephone technology either.

Further advantages of a mobile-phone holder:

- Optimum reception quality as a result of using vehicle's external aerial
- Mobile's battery is charged
- Access to internal phone memory
- Convenient operation using multifunction steering wheel

To use a mobile-phone holder, your car must be factory-fitted with optional extra Code 386, Convenience Telephony.

Holders are available for various current Nokia, BlackBerry, Apple and Sony Ericsson mobile phones

For further information about using the phone while in your car, go to www.mercedes-benz.com/connect or contact your Mercedes-Benz partner

02



02 Mercedes-Benz Bluetooth® (SAP) telephone module

The telephone module is designed to extend the mobile communication system in your Mercedes-Benz. Just connect it to your Convenience Telephony system (Code 386) in the centre armrest, and start using your mobile via the on-board hands-free system.

Two versions of the Mercedes-Benz Bluetooth SAP¹ telephone module are available: one in the form of a closed box [picture 02] and the other with a corded handset [not pictured]. Both versions feature a SIM card reader.

Other advantages of the telephone module:

- Access to contact details saved on your SIM card
- Optimum reception quality as a result of using vehicle's external aerial
- Read and receive text messages
- Charge mobile phone via USB interface (closed box only)

1) SAP (SIM Access Profile) allows the module to read your mobile phone's SIM card

03 Media Interface video cable

Transforms your Mercedes-Benz into a cinema: the Media Interface video cable allows you to watch videos on the monitor of your COMAND Online - while the vehicle is stationary. Various video sources (e.g. camcorder, iPod video, iPhone, video player, etc.) can also be connected to the Media Interface via the AUX connection

Only in conjunction with Media Interface (Code 518). Does not support your iPhone's phone function. Please contact your Mercedes-Benz partner for details of other function restrictions



01

Mercedes-B



Interior

Interior appointments

Child safety

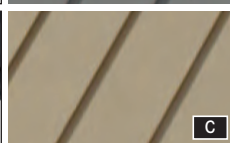
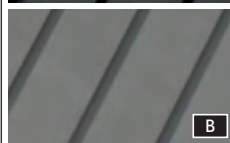
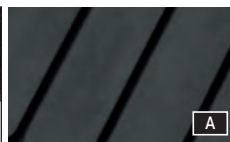
01 Illuminated door sill panel

Irresistible appeal

The decision to purchase a C-Class Coupé comes from the heart: the uncompromising exterior design, emphatic sportiness and attractive interior appeal to all of the senses.

But who says that emotions and convincing selling points have to be mutually exclusive? Take the Mercedes-Benz floor mats – precision-tailored to your car in terms of design and colour, they also remain odourless and are highly durable.

The illuminated Mercedes-Benz lettering of the door sill panels makes your heart smile every time you open the door – yet another irresistible selling point.



- 01 CLASSIC rep floor mats
- 02 CLASSIC velour floor mats
- 03 CLASSIC all-season floor mats

Durable, hardwearing materials. Available in black [A], alpaca grey [B] and almond beige [C] to match the interior. Can be clip-fastened to the floor of the vehicle to prevent slipping

- 04 Illuminated door sill panel

The white illuminated Mercedes-Benz lettering is activated every time you open the door to get in or out. These illuminated door sill panels, in ground stainless steel, are a further "highlight" of the C-Class Coupé

Interior

Interior appointments



05 Stainless steel pedal covers

Pedal covers in ground stainless steel with non-slip stud panel. Available for automatic and manual models

06 Back cushion

Ergonomic, individually adjustable cushion, designed to support the back on long journeys. Available in anthracite | picture shows similar product

Cup holder for the centre console

Black. Insert for the centre console. Holds up to two drink containers within easy reach. The insert simply slots into the standard stowage compartment in the centre console | not pictured

01



02



03



Mercedes-Benz child safety

All Mercedes-Benz child seats are available in the “Limited Black” design. The covers are washable and very hardwearing. Replacement covers for the head sections of all seats are available in flannel grey and chilli red [pictures 04 and 05] as well as a complete replacement cover in the popular “DaimlerSquare” design [picture 06].

Mercedes-Benz child seats are available with automatic child seat recognition as an option. If your car also has automatic child seat recognition (optional extra Code U18), the front passenger airbag is automatically deactivated when a child seat with automatic child seat recognition is installed on the front passenger seat. All child seats are also suitable for use in vehicles without ISOFIX attachment points

01 “BABY-SAFE plus II” child seat

The patented D-SIP® system offers optimum side-impact protection for babies from birth. The integral recline system allows a flatter reclining position for your newborn. Headrest and harness height can be adjusted to suit your child. For babies up to around 15 months (up to 13 kg)

Sun canopy

Available as an option for “BABY-SAFE plus II” child seat | not pictured

02 “DUO plus” child seat

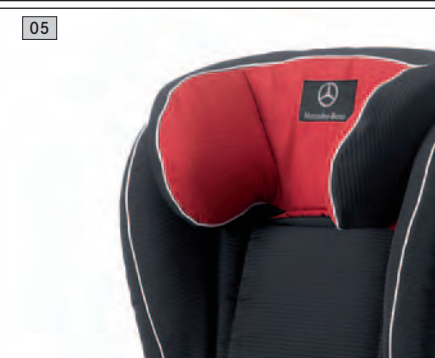
Optimum safety for children between the ages of around 8 months and 4 years (9 to 18 kg). Fitted as standard with top tether, an additional belt for securing the head section, a height-adjustable shoulder belt and ventilation channels. With automatic child seat recognition and ISOFIX attachment points. Adjustable tilt

03 “KidFix” child seat

Booster seat for optimum side-impact protection, with height-adjustable backrest. The “KidFix” seat can be secured using the 3-point seat belt and ISOFIT attachment points. Available with automatic child seat recognition as an option. For children between the ages of around 3.5 and 12 (15 to 36 kg)

04–06 Child seat covers

Replacement covers are available for all child seat models - either in the form of a cover for the head section in flannel grey [picture 04] or chilli red [05] or as a complete replacement cover in the popular “DaimlerSquare” design [06]







Cargo & Care

Roof-mounted accessories

Boot accessories

01 Mercedes-Benz roof box 450

02 Alustyle basic carrier bars



02



04



The outlook: predominantly sporty

Dynamic people enjoy sports and drive cars that fit their lifestyle. Mercedes-Benz carrier systems make it easy to transport sports equipment.

Another piece of good news: our genuine accessories are developed to the same quality and safety standards as your favourite piece of sports kit – your C-Class Coupé.

01 Alustyle basic carrier bars

The Alustyle system opens up a wealth of flexible options when it comes to transporting sports equipment and luggage. Simply combine the Alustyle basic carrier bars with a variety of different roof-mounted carriers which you can see here and on the following pages. The basic carrier bars are precisely tailored to the body of your C-Class Coupé, ensuring the highest degree of safety and optimum aerodynamics

02 Transport and stowage bag

Robust bag, made from a high-quality nylon fabric. Protects the basic carrier bars and makes it easier to transport them

03 New Alustyle bicycle rack

Depending on the permissible roof load, up to three bicycle racks can be fitted per pair of basic carrier bars. Each bicycle rack can hold one bicycle with a max. frame diameter of 98 mm (circular frame tubes) or 110 x 70 mm (oval frame tubes). The support frame folds down when not in use, reducing drag when travelling without cycles. Cycles can either be attached to the rack once it has been fitted to the roof or before it is fitted

04 Coil lock

Designed to help prevent theft. Available as an option for the bicycle rack

05 New Alustyle ski and snowboard rack "Comfort"

For up to 6 pairs of skis or 4 snowboards. Lockable. Practical pull-out function makes loading and unloading easier

06 New Alustyle ski and snowboard rack "Standard"

For up to 4 pairs of skis or 2 snowboards. Lockable



05



Mercedes-Benz roof boxes

Elegant, aerodynamic design, made for your Mercedes-Benz. High-quality, extremely durable material. 450 and 330 models open on both sides for convenient loading and unloading

01 Mercedes-Benz roof box 450

Family box. Capacity approx. 450 litres. Available in black metallic and silver metallic. Optional accessories: luggage set and ski rack insert

02 Mercedes-Benz roof box 330

Sports box. Capacity approx. 330 litres. Available in titanium metallic and matt silver. Optional accessories: luggage set and ski rack insert

01



01 02



03 Luggage set

for Mercedes-Benz roof box models 450 and XL

Four bags, designed to make perfect use of the space available in the roof boxes. Made from hardwearing, water-repellent polyester. Plus two matching ski bags, each designed to hold max. two pairs of skis. Ski bag also available separately

Luggage set

for Mercedes-Benz roof box models 330 and L

Four bags made from hardwearing, water-repellent polyester | not pictured

03



Boxes open on both sides for convenient loading and unloading



04



04 Ski rack insert

for Mercedes-Benz roof box models 450 and XL

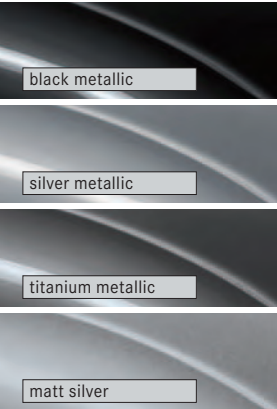
A secure hold for up to five pairs of skis¹

Ski rack insert

for Mercedes-Benz roof box models 330 and L

A secure hold for up to three pairs of skis¹ | not pictured

1) Subject to geometry of skis





01 Rear-mounted bicycle rack for trailer coupling, folding

Easy-to-use, lockable rear-mounted bicycle rack, designed to provide secure transport for 2 or 3 cycles. Rack is easy to attach to trailer coupling, and cycles are equally easy to fit to rack. An ingenious roller mechanism means that the boot can still be opened [A]. The rack is easy to fold [B] for space-saving stowage in the boot, at your holiday accommodation or at home. The robust nylon transport bag is designed to protect the folded bicycle rack when stowed

Rear-mounted bicycle rack for max. 2 cycles

A000 890 1493

Rear-mounted bicycle rack for max. 3 cycles

A000 890 1593

02 Trailer coupling

Folds away using control in boot.
Max drawbar load: 75 kg

03 Adapter

For trailer with 7-pin plug

04 Tie-down strap

Even heavy objects can be secured in place easily using this strap



01 Non-slip mat

Black. Non-slip mat made from oil and acid-resistant polyester. Designed to fit the contours of the boot

02 Concertina load sill protector

Protects bumper and load sill from scratches. Can be attached to shallow boot tub



03 Stowage crate

Can be divided into four sections using the adjustable partitioning elements. Ideal for transporting items you don't want to tip over or slide around. The crate can be secured in place by means of Velcro. Full functionality only in conjunction with the shallow boot tub

04 Shallow boot tub

Simple to clean. Non-slip thanks to PP-Flex material. Suitable for transporting foodstuffs. Concertina load sill protector can be attached to the tub



01



01 Luggage-securing feature

Ingenious solution to the problem of luggage sliding around in the boot. Attaches securely around the object in question thanks to Velcro fastening

02 Box of replacement bulbs

The box of replacement bulbs ensures that you always have the right bulbs at hand for your C-Class. So if one of the bulbs fails or you're driving in one of the many countries where daytime running lamps are compulsory, you're well prepared

02



03



03 Fluorescent jackets

Already compulsory in many countries, the bright orange and yellow fluorescent jackets with reflective stripes are conspicuous even in the dark. Available individually or as a pack of two

04 Luggage nets

Available for the floor of the boot and the load sill. Prevent lightweight objects from sliding around during your journey. All nets are in pocket format

04



Cargo & Care

Boot accessories

05 Coolbag

Black. Fabric outside, plastic liner inside. Outside pockets offer plenty of room for extra items. Capacity: 12 litres. 12V connection. Adjustable carrying strap

06 Coolbox

Black/grey. Hard case with fabric cover featuring pockets for extra items. Cold/hot switch. Capacity: 24 litres. 12V connection. Adjustable carrying strap

07 Rectifier

Allows the coolbox and the coolbag to be connected to a 230V socket at home

08 Charger with trickle charge function

With its cutting-edge technology, the Mercedes-Benz charger ensures the longest possible battery life. Available in a 3.6 amp version and a 25 amp version

09 Shopping crate

Anthracite. Collapsible

10 Vehicle tool kit

6-piece tool kit in practical zipped bag. Includes jack, wheel wrench, wheel centering bolt, chock, shim plate and gloves





1. Design & Development

Mercedes-Benz genuine accessories make your dream car a reality - while ensuring that it remains a Mercedes-Benz through and through:

- ▶ Individualisation options are developed in accordance with the Mercedes-Benz car design philosophy.
- ▶ The use of CAD data from Mercedes-Benz Vehicle Development ensures precision-fit accessories.

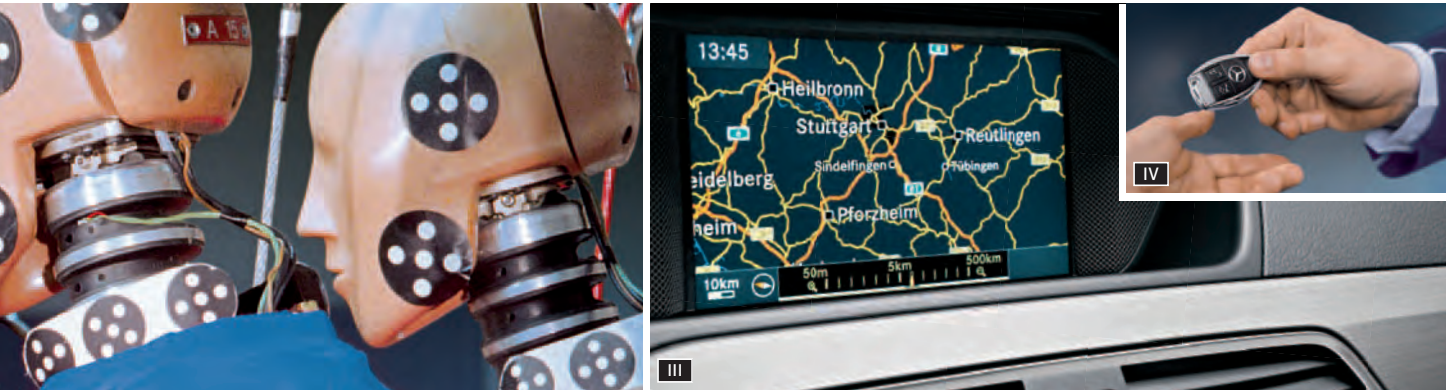
II. Quality & Safety

When it comes to Mercedes-Benz vehicles, quality and safety are paramount. You can feel equally safe with Mercedes-Benz genuine accessories as a result of:

- ▶ Stringent safety measures and extensive load testing, including the use of crash test facilities and the wind tunnel.
- ▶ Harmonised development of both vehicle and Mercedes-Benz genuine accessories.
- ▶ The highest of standards, far in excess of those prescribed by law.

Mercedes through and through

When you drive a Mercedes-Benz, you do so for the best of reasons. Why should your choice of accessories be governed by different standards? Pioneering when it comes to design and technology, Mercedes-Benz genuine accessories deliver on the promises of a major brand.



III. Function & Operation

Mercedes-Benz genuine accessories form part of the vehicle concept from the outset. This results in impressive functional solutions:

- ▶ Fully integrated telematics products can be operated safely and conveniently using the multifunction steering wheel.
- ▶ Roof-mounted carrier systems can be fitted quickly and without the use of additional tools.
- ▶ Instructions and manuals are in standard format and easy to understand.

IV. Advice & Fitting

No one is as familiar with the ins and outs of your vehicle as our employees. And the same goes for Mercedes-Benz genuine accessories:

- ▶ Contact your Mercedes-Benz Service and Sales partners for expert advice.
- ▶ Trust our trained specialists when it comes to fitting Mercedes-Benz genuine accessories.



01



Collection

Personal accessories

01 “C” key ring

C as in Coupé. C as in Collection

Why do so many of the good qualities in life start with a “C”? Charm, charisma and character will all be familiar attributes to Coupé drivers.

Here you can see various ways to express your style consistently – another word beginning with C.

01



02



01 Unisex watch

Anthracite, with mandarin-coloured contrasts. Stainless steel case and stainless steel buckle. Hardened, anti-reflective mineral crystal, leather strap, screw back. Tested to 5 ATM. Mercedes-Benz engraved on back

02 Men's polo shirt

Black. 100% mercerised cotton. Ribbed collar. Logo embroidered on front left

03



05



04



06



03 Cap

White. 100% cotton. Topstitching and underside of peak in grey. Adjustable fit. Logo embroidered on front

04 Wallet

Matt black. 100% leather. 2 note sections, 1 coin compartment, 8 credit card slots, 5 pockets. Star logo stud

05 Belt

Black. 100% leather. With comfort fastener. Adjustable fit. Business style

06 "C" key ring

Key ring with split ring, centre section and articulated link in brass. The fob is a replica of the lettering on the boot lid



01

02

AMG

Bodystyling
Light-alloy wheels
Interior



03

- 01 AMG front apron
- 02 AMG 5-twin-spoke wheel
- 03 AMG side skirts

01 AMG bodystyling

A sporty exterior for your C-Class Coupé. The AMG bodystyling components - front apron, rear apron and side skirts - are designed for optimum dynamism | also pictured on previous page

02 AMG 7-spoke wheel

Finish: available in silver/high-sheen (pictured) and titanium grey/high-sheen
Wheel: 8.0 J x 18 ET 50 | Tyre: 225/40 R18
B6 603 1494 (silver/high-sheen)
B6 603 1513 (titanium grey/high-sheen)

Option for rear axle:

Wheel: 8.5 J x 18 ET 54 | Tyre: 255/35 R18
B6 603 1495 (silver/high-sheen)
B6 603 1514 (titanium grey/high-sheen)



03 AMG 7-twin-spoke wheel

Finish:
black/high-sheen

Wheel: 7.5 J x 18 ET 47
Tyre: 225/40 R18
B6 603 1509

Option for rear axle:

Wheel: 8.5 J x 18 ET 54
Tyre: 255/35 R18
B6 603 1510

AMG 6-twin-spoke wheel

Finish:
silver/high-sheen | not pictured

Wheel: 7.5 J x 17 ET 47
Tyre: 225/45 R17
B6 603 1400

Option for rear axle:

Wheel: 8.5 J x 17 ET 58
Tyre: 245/40 R17
B6 603 1401

01 | 02 | 45.7 cm | 18"





04 AMG 5-twin-spoke wheel

Finish: silver/high-sheen
Wheel: 8.0J x 18 ET 50
Tyre: 225/40 R18
B6 603 1382

Option for rear axle:

Wheel: 8.5J x 18 ET 54
Tyre: 255/35 R18
B6 603 1383

AMG 5-twin-spoke wheel

Finish: silver/high-sheen
| pictured on previous page
Wheel: 7.5J x 17 ET 47
Tyre: 225/45 R17
B6 603 1492

Option for rear axle:

Wheel: 8.5J x 17 ET 58
Tyre: 245/40 R17
B6 603 1493

05 AMG multifunction sports steering wheel

3-spoke design, flattened at top and bottom, with aluminium shift paddles. Black nappa leather, perforated in grip area

06 AMG carbon fibre trim

Carbon fibre trim elements for doors and dashboard
Only in conjunction with Code 275 (Memory package)

07 AMG door pin

In high-quality stainless steel

08 AMG door sill panels, not illuminated

Available in brushed stainless steel

09 AMG door sill panels, illuminated

In brushed stainless steel, with white LED illumination

10 AMG floor mats

With embroidered AMG lettering

AMG indoor car cover

Silver-coloured, with black AMG logo
| not pictured

AMG spoiler lip

Genuine carbon fibre detail for the boot lid
| not pictured



Genuine accessories for the C-Class Coupé

Light-alloy wheels are supplied without tyres, wheel bolts or hub caps

Further colour variants for individual products can be found in the separate price list for this brochure

Description	p	Item no.
Adapter for trailer coupling	31	A000 821 1856
Alustyle basic carrier bars	26	A204 890 0593
AMG carbon fibre trim	45	A204 720 5580
AMG door pin, round	45	A000 766 0228
AMG door sill panels, illuminated, white LED	45	B6 602 1089
AMG door sill panels, not illuminated	45	B6 602 1088
AMG floor mats, set of 4, black	45	B6 603 7207
AMG front apron, with LED daytime running lamps, headlamp cleaning system and PARKTRONIC including Parking Guidance	44	B6 603 6557
AMG indoor car cover	45	A204 899 0586
AMG light-alloy wheels	44	from page 44
AMG multifunction sports steering wheel, 3-spoke design	45	A172 460 4803
AMG rear apron, with PARKTRONIC including Parking Guidance and Blind Spot Assist	44	B6 603 6559
AMG side skirts	44	B6 603 6651
AMG spoiler lip, carbon fibre	45	B6 603 6650
"BABY-SAFE plus II" child seat, Limited Black, with automatic child seat recognition	23	A000 970 2000 9H95
Back cushion	21	A000 970 0690
Becker MAP PILOT, in conjunction with Code 508	14	A172 900 6203
Belt	41	B6 695 6486
Bluetooth (SAP) telephone module, box	17	A212 906 8600
Box of replacement bulbs	34	A000 580 2510
"C" key ring	41	B6 695 7502
Cap	41	B6 695 0035
Charger, ECE version, 3.6 A	35	A000 982 0121
Charger, ECE version, 25 A	35	A000 982 0321
Child seat cover for "BABY-SAFE plus II", DaimlerSquare	23	A000 970 0981 9G43
Child seat cover for "BABY-SAFE plus II", Limited Black	23	A000 970 0981 9H95

Description	p	Item no.
Child seat cover for "DUO plus", DaimlerSquare	23	A000 970 0481 9G43
Child seat cover for "DUO plus", Limited Black	23	A000 970 0481 9H95
Child seat cover for "KidFix", DaimlerSquare	23	A000 970 0681 9G43
Child seat cover for "KidFix", Limited Black	23	A000 970 0681 9H95
CLASSIC all-season floor mats, LHD, complete set, black	20	A207 680 1848 9G33
CLASSIC rep floor mats, LHD, complete set, black	20	A207 680 0948 9G32
CLASSIC velour floor mats, LHD, complete set, black	20	A207 680 0048 9F87
Coil locks, 3 mm, set of 2, common key	27	A000 583 1695
COMAND Online multimedia system with 6-DVD changer, NTG4.5	15	on request
Concertina load sill protector	32	A212 680 0246
Coolbag	35	B6 681 8725
Coolbox	35	A000 820 4206
Cup holder for the centre console	21	A204 680 2391
"DUO plus" child seat, Limited Black, with automatic child seat recognition	23	A000 970 1100 9H95
"DUO plus" child seat, Limited Black, without automatic child seat recognition	23	A000 970 1600 9H95
Europe navigation DVD for COMAND Online	15	on request
Fluorescent jacket, orange	34	A000 583 0461
Fluorescent jackets, pack of 2, orange/yellow	34	A000 583 0361
Headrest cover for "BABY-SAFE plus II", chilli red	23	A000 970 0156 3E16
Headrest cover for "BABY-SAFE plus II", flannel grey	23	A000 970 0156 7N37
Headrest cover for "DUO plus", chilli red	23	A000 970 0356 3N16
Headrest cover for "DUO plus", flannel grey	23	A000 970 0356 7N37
Headrest cover for "KidFix", chilli red	23	A000 970 0256 3N16
Headrest cover for "KidFix", flannel grey	23	A000 970 0256 7N37
Hub caps, black with chrome star	11	B6 647 0200
Hub caps, Roadster design, black	11	B6 647 0201

Description	p	Item no.
Hub caps, Roadster design, blue	11	B6 647 0120
Hub caps, sterling silver with chrome star	11	B6 647 0206
Hub caps, titanium silver with chrome star	11	B6 647 0203
Illuminated door sill panels, white, front, set of 2	20	A204 680 5535
“KidFix” child seat, Limited Black, with automatic child seat recognition	23	A000 970 1800 9H95
“KidFix” child seat, Limited Black, without automatic child seat recognition	23	A000 970 1900 9H95
Light-alloy wheels	06	from page 06
Luggage net, floor of boot	34	A204 868 0074
Luggage net, load sill	34	A204 868 0174
Luggage-securing feature	34	A001 987 1414
Luggage set for roof box models 330 and L	29	A000 890 0411
Luggage set for roof box models 450 and XL	29	A000 890 0511
Media Interface video cable	17	A001 827 8004
Men’s polo shirt (sizes S–XXL)	40	B6 695 7863 – 7867
Mobile-phone holders The range is being extended all the time. Please contact your Mercedes-Benz partner for details	16	on request
Mud flaps, front set	11	A204 890 0078
Mud flaps, rear set	11	A204 890 0678
New Alustyle bicycle rack	27	A000 890 0293
New Alustyle ski and snowboard rack “Comfort”	27	A000 890 0393
New Alustyle ski and snowboard rack “Standard”	27	A000 890 0493
Non-slip mat	32	A204 684 0005
Rear-mounted bicycle rack for trailer coupling, folding, for max. 2 cycles	31	A000 890 1493
Rear-mounted bicycle rack for trailer coupling, folding, for max. 3 cycles	31	A000 890 1593

Description	p	Item no.
Rectifier	35	A000 982 0021
Rim locks	11	B6 647 0155
Roof box 330, matt silver	28	A000 840 3362
Roof box 330, titanium metallic	28	A000 840 3462
Roof box 450, black metallic	28	A000 840 3662
Roof box 450, silver metallic	28	A000 840 3562
RUD-matic DISC snow chain system, 225/50 R16	11	B6 755 0004
SD memory card	15	B6 782 3973
Shallow boot tub	33	A204 814 0741
Shopping crate	35	B6 647 0995
Ski rack insert for roof box 330 and L	29	A000 840 4718
Ski rack insert for roof box 450 and XL	29	A000 840 4818
Stainless steel pedal covers with rubber studs, for automatic models	21	A000 290 0501
Stainless steel pedal covers with rubber studs, for manual models	21	A000 290 0601
Stowage crate	33	A000 814 0041
Sun canopy for “BABY-SAFE plus II”, Limited Black	23	A000 970 0055 9H95
Tie-down strap	31	A000 890 0294
Trailer coupling	31	on request
Transport and stowage bag for basic carrier bars	26	A000 890 0111
Tyre pressure gauge	11	B6 658 8140
Unisex watch	40	B6 695 5479
Valve caps	11	B6 647 2001
Vehicle tool kit	35	B6 685 0788
Wallet	41	B6 695 6483
Wheel bolts	11	B6 647 0159

June 2011

Please note: changes may have been made to the products since this brochure went to press (02.05.2011). The manufacturer reserves the right to make changes to the design, form, colour and specification during the delivery period, provided these changes, while taking into account the interests of the vendor, can be deemed reasonable with respect to the purchaser. Where the vendor or the manufacturer uses symbols or numbers to describe an order or the subject of an order, no rights may be derived solely from these. The illustrations may show accessories and items of optional equipment which are not part of standard specification. Colours may differ slightly from those shown in the brochure, owing to the limitations of the printing process. This brochure is distributed internationally. It provides a general indication of the range of models, features, optional extras and/or colours available in various countries. Some of the models, features, optional extras and/or colours may not be available in your country or may only be available in a different specification. Additionally some models, features, optional extras and/or colours may only be available in combination with others. For current and more specific information in relation to the range of models, features, optional extras and/or colours available in your country, and their pricing, you should contact your nearest authorised Mercedes-Benz Passenger Car Dealer.