

Aurion

Luxury in motion.



toyota.com.au



Oh what a feeling!

Take a more luxurious drive.

It's apparent from the very first glance. The graceful posture, sleek lines and sophisticated styling make it clear that Aurion is truly a luxurious vehicle.

Step behind the wheel, and that sense of understated elegance is only enhanced – with the high quality finishes, the spaciousness, and the array of intuitive technology that make driving a simple and seamless

pleasure. And under the bonnet, the powerful and efficient V6 engine responds with utmost precision.

Aurion is in a class of its own, a vehicle for those who place a premium on sophistication, who value the truly refined, and wherever they go, choose to go in style.



Engineered to be enjoyed.

First impressions are powerful things and when you first lay eyes on the Aurion, it's clear this is a car that will get you noticed in the best possible way. From every angle, the carefully crafted lines and sleek, confident profile speak not just to refined style, but intelligent aerodynamics.

Look closer and you'll notice touches of class from front to back – from the dynamic front grille, to the sports-inspired alloy wheels, Aurion makes a

statement of style and refinement. And with aero stabilising fins mounted to the side view mirrors and the underbody, this is the most aerodynamic Aurion yet.

Throughout the Aurion range – from the elegance of the Presara, to the athletic prestige of the Sportivo models, you'll find individual interpretations of luxury, and a sense of style that perfectly matches your own.





Presara model shown



Ivory leather accented interior – Presara model shown

The height of technological sophistication.

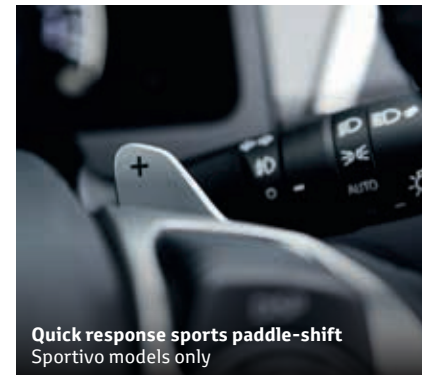
From the moment you step inside the Aurion you're enveloped in luxury. It starts with the opulent interior, and extends right through to the array of clever technologies, such as the keyless Smart Entry and Start system,¹ and the clever electric rear sunshade² that provides shade and protects from the heat and sun.

When it comes to sound, Aurion delivers, with the audio system highlighted by an impressive 6.1" audio display screen. Choose the Presara or Sportivo ZR6 and you'll enjoy the JBL premium audio system with 7" screen display complete with Digital Radio (DAB+),³ Satellite Navigation⁴ and SUNA™ Traffic Channel.⁵

Need to make or receive a phone call or change your music? Aurion makes that a seamless experience too – with steering wheel mounted audio controls, and Bluetooth®⁶ connectivity for audio streaming and hands free mobile calls. And, thanks to voice control in Presara and ZR6 models, convenience is enhanced further.



Electric rear sunshade
Prodigy, Presara and Sportivo ZR6 models only



Quick response sports paddle-shift
Sportivo models only



Luxurious finishes
Presara model shown



Satellite Navigation
Presara model shown



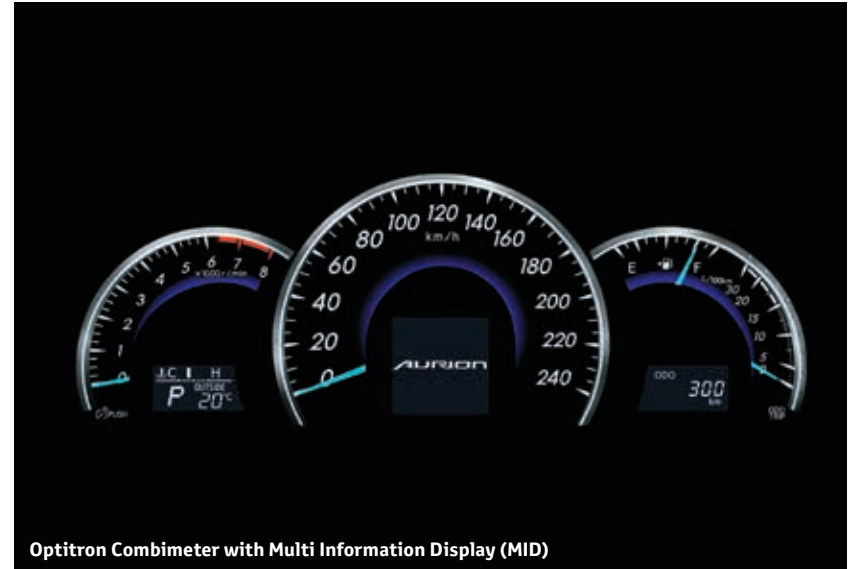
Smart Start Button
Prodigy, Presara and Sportivo models only

For the true pleasure of driving.

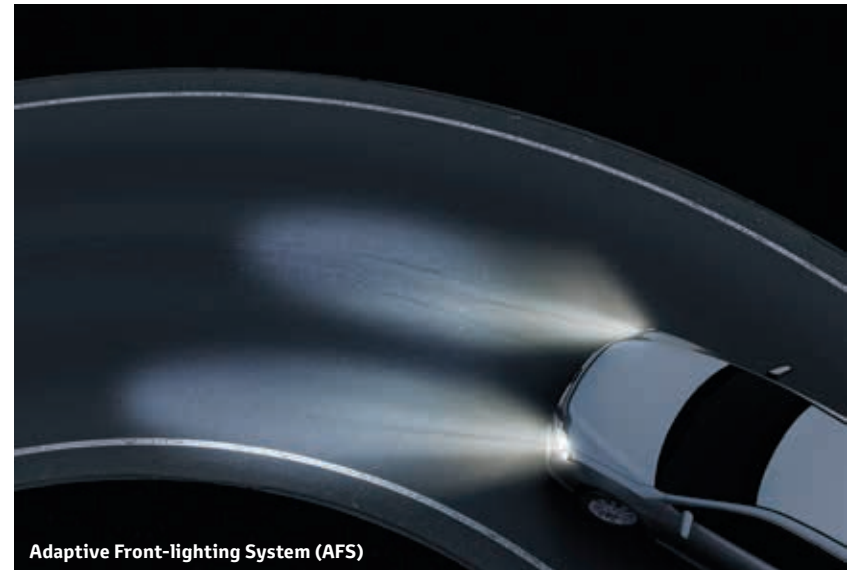
Every last detail of the Aurion has been designed for comfort, convenience and pleasure. From the dual-zone climate control air conditioning, ensuring you and your passengers are always the perfect temperature, to the acoustic insulation technology that blocks outside noise and keeps the cabin whisper quiet, Aurion is a genuine delight to drive.

You'll notice immediately the sense of space – with added legroom in the back seats created through clever sculpting of the door trims and seatbacks. Specially designed for comfort, the rear seats have been shaped for optimum sitting posture, and the driver's seat is equipped with advanced lumbar support for extra comfort, even on those long drives.

It takes just one glance at the Multi Information Display (MID) to know all the key details of your trip – such as your average fuel economy. And with rain sensing wipers² and the Adaptive Front-lighting System (AFS) (on the Presara and the Sportivo ZR6 models), which changes your headlamp beam direction in response to steering, the Aurion is a pleasure to drive even in adverse conditions.



Optitron Combimeter with Multi Information Display (MID)



Adaptive Front-lighting System (AFS)



Sportivo ZR6 in Silver Pearl



Superior performance, delivered powerfully.

Beneath the sleek lines of Aurion's bonnet you'll find an advanced 3.5 litre dual VVT-i V6 engine capable of an impressive 200kW. Highly responsive, and smoothly delivered, it's a sense of power and poise that brings enjoyment to even the most mundane journeys. And it's all achieved with a combined fuel efficiency of just 9.3L/100km.⁷

But the performance doesn't stop under the bonnet. The suspension has been specifically tuned for Australian road conditions – for enhanced handling and fuel efficiency. Shift gears with ease – with a smooth and efficient automatic six speed sequential shift transmission. Plus, in Sportivo models you'll enjoy quick response sports paddle-shift technology, for faster gear changes and a more exciting, dynamic drive.



There's no playing it safe on safety.

There's nothing quite so important as the safety of everyone on board. Even on the shortest of trips, it's reassuring to know that you're buckling up in a vehicle awarded the maximum 5-Star ANCAP safety rating.

Aurion boasts a comprehensive range of active and passive safety features to help you steer clear of trouble. From ABS to Brake Assist (BA), Traction Control (TRC) to Electronic Brake-force Distribution (EBD), Aurion's intelligent braking system will ensure more control and more stopping power. And with the addition of Vehicle Stability Control (VSC), you can brake through corners with confidence. There's also a reversing camera⁸ across the range – and, if you choose the Presara or ZR6 model, a Blind Spot Monitor (BSM)⁸ which will alert you to vehicles hiding in your blind spot.

With the extra safety of seatbelt warning indicators across the range, along with front clearance and rear parking sensors⁸ on Prodigy, Presara and Sportivo ZR6 models, you can enjoy peace of mind behind the wheel. And should a collision ever occur, you and your passengers will be protected from every direction with seven SRS airbags that includes driver's knee protection.



Seven SRS airbags – Image for illustration purposes



Traction Control (TRC) and Vehicle Stability Control (VSC)

Every style of luxury.

From the effortless excellence of the AT-X, to the uncompromising class of the Presara, to the ultimate sports luxury of the Sportivo ZR6, there's an Aurion for every taste, and every style.



AT-X

Big on comfort and style, Aurion AT-X delivers all new levels of excellence, with:

- 3.5 litre V6 petrol engine
- 200kW power output
- 6-speed sequential shift transmission
- 16" alloy wheels
- Dual exhaust
- Electric Power Steering (EPS)
- Exterior mirrors with side indicators
- Auto-on/off headlamps
- Dual-zone climate control air conditioning
- Acoustic windshield
- Driver and passenger's vanity mirror illumination
- Cruise control
- Driver's seat – electrically adjustable with lumbar support
- Multi Information Display (MID) with 'ECO' indicator
- Optitron Combimeter
- AUX + USB input with iPod^{®9} connectivity
- 6.1" screen audio display, single CD player, AM/FM tuner
- Steering wheel mounted controls with Bluetooth^{®6}
- Anti-lock Braking System (ABS) with Electronic Brake-force Distribution (EBD) and Brake Assist (BA)
- Vehicle Stability Control (VSC) and Traction Control (TRC)
- Reversing camera



Prodigy

Offering true luxury and refinement, Prodigy is a car for drivers who like to make an impact. It includes all the sophisticated features of Aurion AT-X, as well as:

- 17" alloy wheels
- Exterior mirrors with automatic dipping in reverse
- Front fog lamps
- Rain sensing wipers
- Chrome door handles
- Smart Entry and Start system
- Electric rear sunshade
- Premium steering wheel
- Aurion front scuff plates
- Front passenger seat – electrically adjustable
- Driver's seat memory
- Leather accented interior and premium door trim
- Front clearance and rear parking sensors

Presara

The ultimate in sophistication and uncompromised style, Presara includes all of the features of Aurion Prodigy, as well as:

- Moonroof – glass tilt and slide
- Automatic high beam
- High Intensity Discharge (HID) headlamps and Adaptive Front-lighting System (AFS)
- Blind Spot Monitor (BSM)
- Reversing camera with back guide monitor
- JBL premium audio with 7" screen display, Digital Radio (DAB+),³ Satellite Navigation⁴ and SUNA™ Traffic Channel⁵





Sportivo SX6

With a premium, sporty and refined style, Sportivo SX6 boasts all of the features of Aurion AT-X, as well as:

- Quick response sports paddle-shift
- Sports suspension
- 17" sport alloy wheels
- Front fog lamps
- Sports grille and front and rear bumper
- Sports pedals
- Sports body kit including front spoiler and side/rear skirts (excluding mudflaps)
- Sports designed front seats
- Aurion scuff plates
- Premium 3-spoke steering wheel

Sportivo ZR6

The ultimate in sports luxury, Sportivo ZR6 includes all of the features of Aurion Sportivo SX6, as well as:

- Rain sensing wipers

- High Intensity Discharge (HID) headlamps with Adaptive Front-lighting System (AFS)
- Automatic high beam
- Driver's seat – electrically adjustable with memory
- Unique leather accented interior and premium door trims

- JBL premium audio with 7" touch screen display, Digital Radio (DAB+),³ Satellite Navigation⁴ and SUNA™ Traffic Channel⁵
- Blind Spot Monitor (BSM)
- Reversing camera with back guide monitor
- Front clearance and rear parking sensors
- Electric rear sunshade



Now to make it yours.

To give your own personal touch to your Aurion, we've selected a palette of nine dynamic colours for you to choose from.



Wildfire¹⁰ 3R3



Diamond White¹⁰ 061



Crystal Pearl¹⁰ 070



Silver Pearl¹⁰ 1F7



Magnetic Bronze¹⁰ 4S2



Graphite¹⁰ 1G3



Arctic Frost¹⁰ 8S4
– Available on AT-X model only



Reflex Blue¹⁰ 8L5
– Available on Sportivo SX6 and ZR6 only



Eclipse Black¹⁰ 218

The finishing touches.

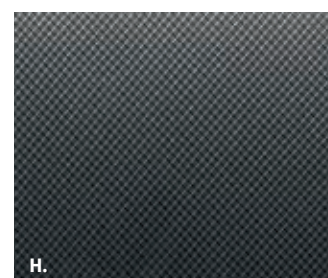
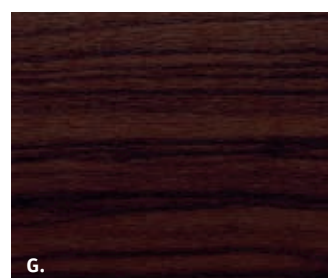
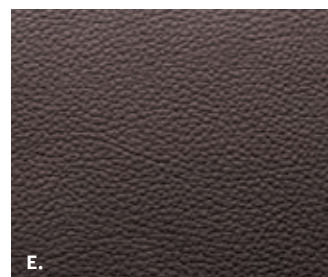
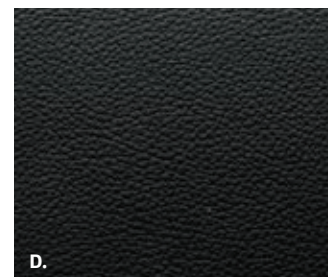
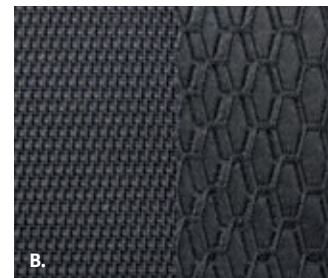
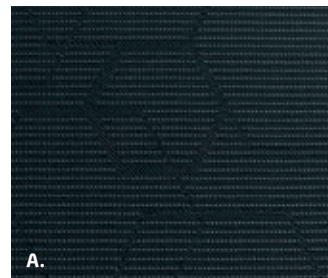
To complement your sense of style, each Aurion model comes with its own range of premium finishes and trims. Whether you prefer the sports-inspired black fabric of Sportivo SX6, or the ivory or black leather accented seats in Prodigy and Presara models, you'll love every inch of your Aurion.

Interior Seat Trim

- A. Black Shadowflex fabric
- B. Black Sports fabric
- C. Ivory leather accented
- D. Black leather accented
- E. Raizen leather accented

Interior Finish

- F. Silver
- G. Woodgrain-look
- H. Sports Mesh



COLOUR GUIDE

| Grade | Interior Seat Trim | Interior Finish | Diamond White | Crystal Pearl ¹⁰ | Silver Pearl ¹⁰ | Graphite ¹⁰ | Wildfire ¹⁰ | Magnetic Bronze ¹⁰ | Arctic Frost ¹⁰ | Reflex Blue ¹⁰ | Eclipse Black ¹⁰ |
|--------------|--|------------------------|---------------|-----------------------------|----------------------------|------------------------|------------------------|-------------------------------|----------------------------|---------------------------|-----------------------------|
| AT-X | Black Shadowflex (FA20) | Silver | • | | • | • | • | • | • | | • |
| Prodigy | Ivory leather accented (LA00) or Black leather accented (LA20) | Silver | • | • | • | • | • | • | | | • |
| Presara | Ivory leather accented (LA00) or Black leather accented (LA20) | Woodgrain-look | • | • | • | • | • | • | | | • |
| Sportivo SX6 | Black Sports fabric (FC20) | Silver and Sports Mesh | • | | • | • | • | | | • | • |
| Sportivo ZR6 | Raizen leather accented (LB21) | Silver and Sports Mesh | • | | • | • | • | | | • | • |



Ivory leather accented interior shown

Your Aurion. Your style.

Toyota's range of Genuine Accessories is developed to strict quality and performance standards and backed by our Toyota Warranty,¹¹ to suit both your life and your style.



Aurion AT-X in Graphite accessorised with 17" Alloy Wheels¹² Front Park Assist⁸ Headlamp Covers, Bonnet Protector and Slimline Weathershields. Accessories sold separately.



Headlamp Covers and Bonnet Protector (Sold separately)



Slimline Weathershields



17" Alloy Wheels¹²



Front Fabric Seat Covers
Not compatible with leather accented seats



Bootliner



Towbar,³³ Towball and Trailer Wiring Harness
(Sold separately)



Carpet Floor Mats
Front and rear set (Front set shown only)



Roof Racks



Front Park Assist[®]
Available for AT-X and Sportivo SX6 models only
(Bonnet protector and headlamp covers shown sold separately)



Mud Guards

| MECHANICAL SPECIFICATIONS | | |
|---------------------------|---|---|
| Engine | Engine code and description | 2GR-FE 3.5 litre V6 petrol engine |
| | Valve mechanism | 24-valve Double Overhead Camshaft (DOHC), with Dual Variable Valve Timing with intelligence (VVT-i) |
| | Max power (kW/rpm) | 200kW @ 6200rpm |
| | Max torque (Nm/rpm) | 336Nm @ 4700rpm |
| | Bore x Stroke | 94.0 X 83.0mm |
| | Compression ratio | 10.8 : 1 |
| Fuel | Fuel – fuel type octane no. (minimum recommended) | 91 RON unleaded petrol |
| | Fuel economy – ADR81/02 combined cycle ⁷ | 9.3L/100km |
| | Emissions – combined CO ₂ ⁷ | 215g/km |

| AURION MODEL | | AT-X | PRODIGY | PRESARA | SPORTIVO SX6 | SPORTIVO ZR6 |
|--|--|--|--------------------|--------------------|-------------------------|-------------------------|
| Transmission | Transmission | 6-speed automatic transmission with sequential shift | | | | |
| | Quick response sports paddle-shift with sports mode | | | | • | • |
| Steering, Brakes and Suspension | Tilt and reach adjustable steering wheel | • | • | • | • | • |
| | Electric Power Steering (EPS) | • | • | • | • | • |
| | Brakes – front ventilated disc and rear solid disc | • | • | • | • | • |
| | Suspension – front – MacPherson strut type with stabiliser bar | • | • | • | • | • |
| | Suspension – rear – dual link type with stabiliser bar | • | • | • | • | • |
| | Sports suspension | | | | • | • |
| | Park brake – pedal type | • | • | • | • | • |
| Wheels | Design and style | 10-spoke 16" alloy | 10-spoke 17" alloy | 10-spoke 17" alloy | 5-spoke 17" sport alloy | 5-spoke 17" sport alloy |
| | Full sized spare wheel | Steel | Alloy | Alloy | Alloy | Alloy |
| | Tyre size | 215/60 R16 | 215/55 R17 | 215/55 R17 | 215/55 R17 | 215/55 R17 |

| AURION MODEL | | AT-X | PRODIGY | PRESARA | SPORTIVO SX6 | SPORTIVO ZR6 |
|--------------------------------------|---|-------------|----------|----------|--------------|--------------|
| Dimensions ¹⁴ and Weights | Overall length (mm) | 4835 | 4835 | 4835 | 4855 | 4855 |
| | Overall width (mm) | 1825 | 1825 | 1825 | 1825 | 1825 |
| | Overall height (mm) | 1470 | 1470 | 1470 | 1470 | 1470 |
| | Wheelbase (mm) | 2775 | 2775 | 2775 | 2775 | 2775 |
| | Kerb to kerb turning circle (mm) | 11000 | 11000 | 11000 | 11000 | 11000 |
| | Vehicle kerb weight (kg) ¹⁵ | 1525 | 1550 | 1550 | 1555 | 1555 |
| | Gross vehicle weight rating (kg) ¹⁶ | 2100 | 2100 | 2100 | 2100 | 2100 |
| | Gross trailer weight, braked/unbraked (kg) | 1600/500 | 1600/500 | 1600/500 | 1600/500 | 1600/500 |
| Capacities | Fuel tank capacity (L) | 70 | 70 | 70 | 70 | 70 |
| | Seating capacity | 5 | 5 | 5 | 5 | 5 |
| Exterior | Dual exhaust | . | . | . | . | . |
| | Exterior door handles colour | Body colour | Chrome | Chrome | Body colour | Body colour |
| | Electrically adjustable exterior mirrors with side indicators | . | . | . | . | . |
| | Rear garnish and rocker molding colour | Chrome | Chrome | Chrome | Body colour | Body colour |
| | Exterior mirrors with automatic dipping in reverse | | . | . | | . |
| | Sports grille and front and rear bumper | | | | . | . |
| | Sports body kit including front spoiler and side/rear skirts (excluding mudflaps) | | | | . | . |
| | High Intensity Discharge (HID) headlamps and Adaptive Front-lighting System (AFS), auto level and washers | | | . | | . |
| | Front fog lamps | | . | . | . | . |
| | Auto-on/off headlamps | . | . | . | . | . |
| Interior | Smart Entry and Start system | | . | . | . | . |
| | Dual-zone automatic climate control air conditioning | . | . | . | . | . |
| | Power windows – front and rear | . | . | . | . | . |

| AURION MODEL | | AT-X | PRODIGY | PRESARA | SPORTIVO SX6 | SPORTIVO ZR6 |
|-------------------------------------|--|------|---------|---------|--------------|--------------|
| Interior <i>continued</i> | Acoustic windshield | * | * | * | * | * |
| | Electric rear sunshade | | * | * | | * |
| | Electro chromatic rear-view mirror | | * | * | | * |
| | Driver and passenger's vanity mirror illumination | * | * | * | * | * |
| | Rain sensing wipers | | * | * | | * |
| | Cruise control | * | * | * | * | * |
| | Premium steering wheel | | * | * | * | * |
| | 'Aurion' front scuff plates | | * | * | * | * |
| | Sports pedals | | | | * | * |
| | Driver's seat – electrically adjustable with lumbar support | * | * | * | * | * |
| | Front passenger seat – electrically adjustable | | * | * | * | * |
| | Driver's seat memory | | * | * | | * |
| | Sports designed front seats | | | | * | * |
| | 60:40 split fold rear seats | * | * | * | * | * |
| | Moonroof – glass tilt and slide | | | * | | |
| Instruments and Controls | Multi Information Display (MID) including Trip A & B odometer (km), outside temperature (°C), fuel range (km), fuel consumption (L/100km), ⁷ average speed (km/h) | * | * | * | * | * |
| | Automatic high beam | | | * | | * |
| | Sports Combimeter | | | | * | * |
| | Optitron Combimeter | * | * | * | * | * |
| Storage | Lockable glove box | * | * | * | * | * |
| | Centre console with sliding lid and storage recess x 2 | * | * | * | * | * |
| | Sunglass holder – front overhead console | * | * | * | * | * |
| | Door pocket – driver and front passenger | * | * | * | * | * |
| | Seat back storage pocket – behind passenger seat | * | * | * | * | * |
| | Beverage holders – 2 x front, 2 x front door pocket, 2 x rear armrest, 4 x rear door pocket | * | * | * | * | * |

| AURION MODEL | | AT-X | PRODIGY | PRESARA | SPORTIVO SX6 | SPORTIVO ZR6 |
|--|---|------|---------|---------|--------------|--------------|
| Entertainment | 6.1" screen audio display, single CD player, AM/FM tuner | * | * | | * | |
| | JBL premium audio with 7" screen display, Digital Radio (DAB+), ² Satellite Navigation ⁴ and SUNA™ Traffic Channel ⁵ | | | * | | * |
| | 3.5mm AUX + USB input with iPod® ⁹ connectivity | * | * | * | * | * |
| | Surround sound speakers | 6 | 6 | 10 | 6 | 10 |
| | Steering wheel mounted audio controls | * | * | * | * | * |
| | Hands-free Bluetooth® ⁶ with media streaming | * | * | * | * | * |
| Safety | Blind Spot Monitor (BSM) | | | * | | * |
| | Anti-lock Braking System (ABS) with Electronic Brake-force Distribution (EBD) and Brake Assist (BA) | * | * | * | * | * |
| | Vehicle Stability Control (VSC) & Traction Control (TRC) | * | * | * | * | * |
| | Reversing camera | * | * | | * | |
| | Reversing camera with back guide monitor | | | * | | * |
| | Front clearance and rear parking sensors | | * | * | | * |
| | Child seat anchorage points x 3 | * | * | * | * | * |
| | Seven SRS airbags – dual front, front side and full length curtain airbags and driver's knee airbag | * | * | * | * | * |
| Seat belt warning buzzer and lights for all occupants | * | * | * | * | * | |
| 3-point seatbelt for all occupants (driver and front passenger with pre-tensioner and force limiter) | * | * | * | * | * | |
| Security | Immobiliser | * | * | * | * | * |
| | Panic alarm on remote | * | * | * | * | * |
| | Remote central locking including boot release on remote | * | * | * | * | * |
| | Speed sensing auto door lock | * | * | * | * | * |
| Options¹⁷ | 5-spoke 17" sport alloy wheels | * | | | | |
| | Moonroof – glass tilt and slide | | * | | * | * |
| | Leather accented interior | * | | | | |
| | Leather accented interior and 17" sport alloy wheels | * | | | | |

The Toyota Advantage.

Every Toyota gives you a lifetime of advantages. That's what makes it a Toyota. You'll enjoy legendary Toyota value from the moment you drive away, and you'll continue to appreciate the quality, safety and innovation that's engineered into each model, every day you drive.



A smarter way to buy.

Toyota Access puts you in complete control when buying a new car.¹⁸ Drive out of the Dealership with a clear road ahead then drive back a few years later with more options at your disposal than ever before. Whatever stage you're at in life, Toyota Access puts you in the driver's seat with ongoing flexibility and assurance. To discover Toyota Access for yourself visit toyota.com.au/access



Finance to get you going.

If you need a little help, Toyota Finance²¹ can offer you a wide range of vehicle financing. With Toyota Finance, you'll have the peace of mind of dealing with one of Australia's leading vehicle finance corporations with over 30 years experience. And with a range of flexible products and services to suit almost every need and circumstance, Toyota Finance can help find the right package for you or your business.



Capped price servicing.¹⁹

A new Toyota means you don't have to worry about unexpected service costs. Every Toyota comes with a low, capped price service cost for a set number of years/kilometres. Pay the same low capped price from one eligible logbook service to the next for up to three years or 60,000km, whichever occurs first (including Genuine parts, labour and fluids). For the full benefits consult a Toyota Dealer or visit toyota.com.au/advantage



Even more protection.

Our Comprehensive Motor Vehicle insurance policy is packed with great benefits including; choice of agreed value or market value, New vehicle replacement cover for Toyota vehicles damaged beyond repair up to 3 years/100,000km,²² Genuine Parts Promise and Quality Repair Guarantee. And our Toyota Insurance Factory Approved Extended Warranty Insurance provides protection that continues after your Toyota New Vehicle Warranty ends.



We've got your back.

Every new Toyota is built to exceptional standards, backed by a three year/100,000km²⁰ warranty, giving you the peace of mind to feel confident for years to come. In the unlikely event that you need them, every Toyota Service Centre is committed to providing any warranty repairs you may need. They have the technology, the tools, and the skilled personnel to keep your Toyota in excellent condition.



Extend your peace of mind.

Whether it's a flat tyre, lost keys or a flat battery, Toyota Extra Care Roadside Assist is never more than a phone call away. Available 24 hours a day, seven days a week, every day of the year, you'll have peace of mind, whatever your emergency.²³ With two levels of cover available, Toyota Extra Care Roadside Assist provides one of the most professional, reliable, and technologically advanced assistance networks in Australia.

Disclaimers and Notice.

- 1 Prodigy, Presara and Sportivo models only.
- 2 Prodigy, Presara and Sportivo ZR6 models only.
- 3 Digital radio station coverage dependent on vehicle location.
- 4 Current navigation mapping database encompasses major capital and primary national road networks and offers some coverage in regional areas.
- 5 SUNA™ GPS Traffic Updates are only available in metropolitan Adelaide, Brisbane, Canberra, Gold Coast, Melbourne, Perth and Sydney; it operates from information provided by Intelomatics Australia and may not cover all road incidents and congestion. See sunattraffic.com.au for details.
- 6 The Bluetooth® word mark is owned by Bluetooth SIG, Inc. Not all devices will be compatible and functionality varies depending on the device.
- 7 Fuel consumption and emissions will vary depending on driving conditions/style, vehicle conditions and options/accessories. Source of fuel consumption data: ADR81/02 combined (L/100km) for auto models.
- 8 Reversing Camera/Park Assist/Sonar Parking/Blind Spot Monitor is a driver assist device only and should not be used as a substitute for safe driving practices. The area into which the vehicle is driven must be visually monitored by the driver.
- 9 iPod® and iPhone® are trademarks of Apple, Inc. Not all devices will be compatible and functionality will vary depending on the device.
- 10 Paint featured is an optional extra available at additional cost. Not all colours available on all models, see colour guide for details of availability.
- 11 All Toyota Genuine Accessories purchased and fitted to a Toyota are warranted for the remainder of the New Vehicle Warranty or 12 months, whichever is greater. Toyota Genuine Accessories purchased from an authorised Toyota Dealer over the counter are warranted from the date of purchase for one year. Conditions apply.
- 12 AT-X grade comes standard with 16" alloy wheels and will require new tyres (sold separately) for the accessory to be fitted.
- 13 Towing capacity is subject to regulatory requirements, towbar and vehicle design and towing equipment limitations. Ask your Dealer for Toyota Genuine Towbar capacity and availability details.
- 14 Some vehicle dimension figures are approximate and vary due to options and accessory fitment.
- 15 Kerb, tare and payload weights are nominal and vary depending on options and accessories.
- 16 Gross Vehicle Mass (GVM) is the total permissible combined weight of the vehicle, including occupants, fuel and cargo.
- 17 Optional extra at additional cost.
- 18 Guaranteed Future Value (GFV) is the minimum value of your new Toyota at the end of your finance contract, as determined by Toyota Finance. If you decide to return your car to Toyota at the end of your term, Toyota Finance will pay you the agreed GFV amount which will be put against your final payment, subject to fair wear and tear conditions and agreed kilometres being met. The information provided is general in nature. You should seek your own financial advice to determine whether Toyota Access is appropriate for your individual circumstances. Terms and conditions, fees and charges apply. Toyota Access Guaranteed Future Value (GFV) products are available to approved customers of Toyota Finance, a division of Toyota Finance Australia Limited ABN 48 002 435 181, Australian Credit Licence 392536.
- 19 Maximum payable for standard scheduled logbook servicing (normal operating conditions) until first of four years or 75,000km (whichever occurs first), up to the first five services. Excludes Government & Rental vehicles. Contact your Toyota Dealer or go to toyota.com.au/advantage for other exclusions, eligibility and full details.
- 20 New Vehicle Warranty expires three years from date of first delivery or 100,000km, whichever occurs first. Refer to the warranty conditions. The New Vehicle warranty does not limit and may not necessarily exceed your rights under the *Competition and Consumer Act 2010*.
- 21 Toyota Finance is a division of Toyota Finance Australia Limited ABN 48 002 435 181, Australian Credit Licence No 392536.
- 22 Terms and conditions apply. This advice does not take into account any of your particular objectives, financial situation or needs. For this reason, before you act on this advice, you should consider the appropriateness of the advice taking into account your own objectives, financial situation and needs. Before making a decision about any of the insurance products, please refer to the current Product Disclosure Statement (PDS) for the relevant product available from participating Dealers, via the Toyota Insurance website at toyotainsurance.com.au or by calling 137 200. Toyota Insurance is a division of Aioi Nissay Dowa Insurance Co., Ltd. ABN 39 096 302 466 AFSL Number 254489 (Andia). The Insurer is Andia. Our insurance policies do not change or take away your rights under the Australian Consumer Law. Your right to claim under our policies for the benefits covered is in addition to other rights and remedies you have under the law in relation to your vehicle. However, you can choose to make a claim under any of our policies even if you have rights under the law.
- 23 Toyota Extra Care is administered by Toyota Finance, a division of Toyota Finance.

IMPORTANT NOTICE – PLEASE READ:

Toyota Genuine Accessories are not applicable to all models/grades. Consider the mass of your load to ensure you will not exceed the maximum allowable individual axle capacity, Gross Vehicle Mass and/or Gross Combined Mass of the vehicle. Refer to the current Accessories brochure or visit toyota.com.au

Toyota Australia has used its best endeavours to ensure material is accurate at the time of printing. All information must be confirmed with your Toyota Dealer at the time of ordering, as specifications and details will change over time. Colours displayed are a guide only and may vary from actual colours. To the extent permitted by law, Toyota Australia will not be liable for any damage, loss or expense incurred as a result of reliance on

for details on warranty and toyota.com.au/vehiclepayload for details on vehicle payload, to help determine Accessories suitable for your vehicle. Accessory colours shown may vary from actual colour due to the printing process.

the information and photos contained in this material. Material distributed in Western Australia by or on behalf of Prestige Motors Pty Ltd (for vehicles) and by Eastpoint Pty Ltd (for parts/accessories). Toyota Australia makes no warranties regarding (and will not be liable for) accuracy of materials distributed in Western Australia. PART NUMBER: TYAURIONBRO. VALID: X5618-1. PRINTED: MAY 2014. GTP1499.

