

# Prius v

Style and space for the modern family.



TOYOTA



[toyota.com.au](http://toyota.com.au)



Oh what a feeling!

# Innovative thinking all the way through.

Imagine being able to orchestrate your school runs, party drop-offs, sports days and visits to the relatives without sacrificing power, style or comfort, and enjoy great fuel efficiency.

With Prius v, you can. The car for the modern family that redefines how you get from A to B, with enough space to carry seven occupants

in comfort, and almost anything else you and the kids can throw at it.

On the road, Hybrid Synergy Drive® offers three alternate driving modes; 'PWR' for strong performance, 'ECO' for fuel efficiency and 'EV' for electric power. And in Prius v i-Tech®, Dynamic Radar Cruise Control<sup>1</sup> will automatically maintain a safe and constant distance from the vehicle in front.

Clever aerodynamic features provide optimal fuel efficiency including 'aero corners' on the

front bumpers and wind efficient covers on the 16" alloy wheels.

The sleek lines are enhanced by LED Daytime Running Lights (DRL) at either end of the front bumper, and on the i-Tech® model the V-shaped LED headlamps provide extra bright visibility at night.

Plus the UV-reducing green glass in the windscreen and front windows also reduces noise and vibration inside, while passengers in the rear will appreciate the darkened privacy glass.



Front cover: Prius v i-Tech® model shown



**A highly versatile,  
family friendly interior.**



Prius v i-Tech® model shown

There's more smart design within Prius v.

The seating can be worked six ways to load virtually anything for a family adventure and up to seven occupants.

Comfort is enhanced with a convenient single-dial air conditioning control and rear-seat sunshades, plus in the i-Tech®

there are heated front seats and a panoramic roof, and should anyone make a mess, the premium seat materials are also easy to clean. All instruments and controls are ergonomically placed around the driver. If you have your hands full, you will appreciate the Smart Entry and Start system that allows you to unlock and start the car while your key remains in your bag or pocket. The seatbelt reminder means there

are no excuses for not buckling up, and the dash combimeter provides a range of important vehicle and trip information.

You'll keep everyone happy with crisp sound from a six-speaker system with a 6.1" touch screen display including integrated reverse camera<sup>2</sup> plus all the iPod®<sup>3</sup> and Bluetooth®<sup>4</sup> capabilities you'd expect.



A.



B.



C.

In the i-Tech® model, step-up to a JBL 8-speaker system operated via a 7" touch screen with Satellite Navigation<sup>5</sup> and Digital Radio.<sup>6</sup>

The i-Tech® also has Intelligent Park Assist (IPA)<sup>7</sup> to help you into tight spaces, and an electrochromatic rear view mirror automatically adjusts to reduce headlight glare at night. Prius v also provides protection for everyone inside. Occupants are protected by seven SRS Airbags.

There's Vehicle Stability Control (VSC) to help with any potential oversteer or understeer. Electronic Brake-force Distribution (EBD) increases the brake force to the wheel(s) that need it most, while Brake Assist (BA) ensures the shortest and safest possible braking distance in an emergency.

The Prius v i-Tech® also has a sensor-based pre-collision safety system that detects the likelihood of a crash, then alerts the driver and holds the seatbelts tight in anticipation of an impact.

- A. Versatile seating for seven – Prius v model shown
- B. Reverse Camera – Prius v i-Tech® model shown
- C. Rear Side Sunshade

## 4 key benefits



### Quietness.

The peaceful performance of the electric 'EV' mode, combined with the high-performance soundproofing materials throughout the engine and passenger compartments, delivers a uniquely tranquil driving experience.

### Emissions.

By ensuring high-level fuel efficiency, Hybrid Synergy Drive® helps minimise the output of CO<sub>2</sub> and other harmful emissions. All of Toyota's hybrid vehicles are designed to comply with relevant global exhaust emissions regulations.

### Fuel economy.

The aerodynamic styling of Toyota's hybrid vehicles, and clever pairing of an electric motor and robust petrol engine, deliver significant fuel economy. Each vehicle also provides ongoing feedback via its Multi Information Display, so you can actively evaluate and change the way you drive for even greater efficiency.

### Power.

Hybrid Synergy Drive® combines the power of two energy sources to deliver powerful, smooth acceleration. Your vehicle can be powered by electricity, petrol, or a combination of both – and it's discreet and seamless.

## How the hybrid system works.

### Starting off

The electric motor is used primarily and power stored in the battery is used to turn the motor.

### Full acceleration

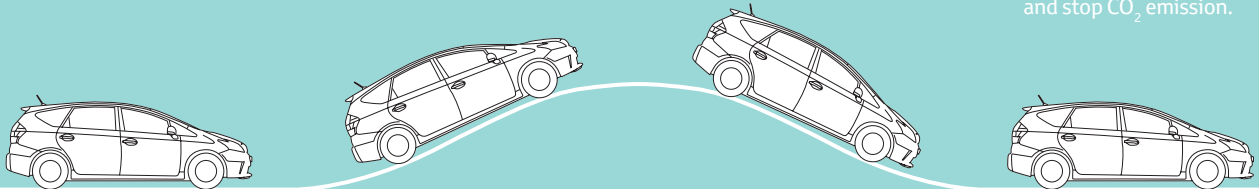
Power is provided by the petrol engine in addition to the electric motor. Power output is maximised for a very powerful acceleration.

### Deceleration

The electric motor functions as a generator during deceleration and braking. Regenerated energy is used to recharge the battery.

### At rest

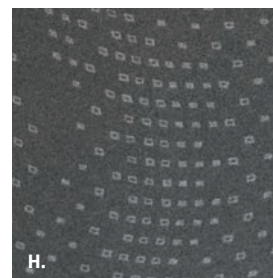
Braking to a stop at a traffic light, the petrol engine is cut off and the car is brought to a gentle stop. The system automatically avoids wasteful idling to conserve fuel and stop CO<sub>2</sub> emission.





# Your Prius v, just the way you want it.

Prius v is available in a choice of two models and seven dynamic colours, so you can choose the model that best suits your family, taste and lifestyle.



## Exterior colour

- A. **Crystal Pearl**<sup>®</sup> 070
- B. **Glacier White** 040
- C. **Wildfire**<sup>®</sup> 3R3
- D. **Silver Pearl**<sup>®</sup> 1F7
- E. **Tasman Blue**<sup>®</sup> 8T5
- F. **Graphite**<sup>®</sup> 1G3
- G. **Ebony** 202

## Interior seat trim

- H. **Grey fabric trim** (FD18) – Prius v model only
- I. **Premium trim** (LB18) – Prius v i-Tech<sup>®</sup> model only

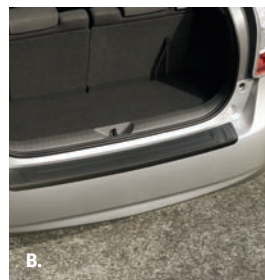
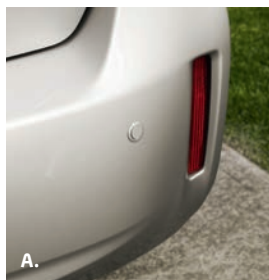
# Your Prius v, your way.

Personalise your Prius v and enhance its practicality and individuality. Toyota's range of Genuine Accessories are developed to strict quality and performance standards, and are backed by our Toyota Warranty,<sup>9</sup> to suit both your life and your style.

- A. Rear Park Assist
- B. Bumper Protector
- C. Mudflaps
- D. Door Handle Protection Film
- E. Boot Protector
- F. Floor Mats  
Front and rear set
- G. Headlamp Covers and Bonnet Protector  
(Sold separately)



Prius v in Silver Pearl accessorised with Headlamp Covers and Bonnet Protector, Mudflaps and Door Handle Protection Film. (Accessories sold separately)



MECHANICAL SPECIFICATIONS		Prius v	Prius v i-Tech®
Hybrid System	Combined system output	100kW	
	Three alternate driving modes	'PWR', 'ECO' and 'EV'	
Petrol Engine	Engine description	1.8L Atkinson Cycle 4-cylinder petrol engine	
	Maximum power/torque	73kW @ 5200rpm/142Nm @ 4000rpm	
Electric Motor	Maximum voltage/power/torque	650V / 60kW / 207Nm	
Fuel Consumption	Fuel economy – ADR81/02 combined cycle (L/100km) <sup>10</sup> /emissions – combined CO <sub>2</sub> g/km <sup>10</sup>	4.4L/100km / 101g/km	
Transmission	Type	Continuously Variable Transmission (CVT)	
Steering and Brakes	Electric Power Steering (EPS) with tilt and reach adjustable steering wheel	•	•
	Regenerative braking system	•	•
PRIUS V MODEL		Prius v	Prius v i-Tech®
Dimensions <sup>11</sup>	Overall length/width (mm)	4615 / 1775	4615 / 1775
	Overall height (mm)	1590	1615
Capacities and Weights	Vehicle kerb weight <sup>12</sup> (kg)	1565	1565
	Seating capacity	7	7
	Fuel tank capacity (L)	45	45
Wheels	Size and type	16" alloy with full wheel cover	16" alloy with full wheel cover
Exterior	Front fog lamps and rear fog lamp	•	•
	Auto-on/off halogen headlamps	•	
	Auto-on/off LED headlamps with pop-up washing system		•
	Rear privacy glass and rear side sun shades	•	•
Interior	Three rows of seating with six seating configurations	•	•
	Panoramic roof (non-opening) with electric roller shade		•
	Driver and front passenger seat heaters		•
Instruments and Controls	Smart Entry and Start system	•	•
	Automatic climate control air conditioning	•	•
	Cruise control	•	
	Dynamic radar cruise control		•
	Head-Up Display (HUD) / Touch Tracer display	•	•
	Intelligent Park Assist (IPA)		•
Entertainment	Electro-chromatic rear view mirror		•
	CD player, AM/FM tuner, 3.5mm AUX + USB input with iPod® <sup>3</sup> connectivity Bluetooth® <sup>4</sup> capability for hands-free mobile and media streaming	•	•
	Steering wheel mounted audio controls	•	•
	6.1" touch screen display audio with 6 speakers	•	
	JBL premium audio with 7" touch screen display, Digital Radio (DAB+) <sup>6</sup> and Satellite Navigation <sup>5</sup> with 8 speakers		•
Active Safety Features	Anti-Lock Braking System (ABS) with Electronic Brake-force Distribution (EBD) and Brake Assist (BA) Vehicle Stability Control (VSC) with Traction Control (TRC) and Hill-start Assist Control (HAC)	•	•
	Reverse camera	•	•
Passive Safety Features	Seven SRS airbags – including driver's knee airbag	•	•
	Three child seat restraint anchorage points and seat belt warning indicator for all occupants	•	•
	Pre-Collision Safety System (PCS)		•



# The Toyota Advantage.

Every Toyota gives you a lifetime of advantages. That's what makes it a Toyota. You'll enjoy legendary Toyota value from the moment you drive away, and you'll continue to appreciate the quality, safety and innovation that's engineered into each model, every day you drive.



## A smarter way to buy.

Toyota Access puts you in complete control when buying a new car.<sup>13</sup> Drive out of the Dealership with a clear road ahead then drive back a few years later with more options at your disposal than ever before. Whatever stage you're at in life, Toyota Access puts you in the driver's seat with ongoing flexibility and assurance. To discover Toyota Access for yourself visit [toyota.com.au/access](http://toyota.com.au/access)



## Capped price servicing.<sup>14</sup>

A new Toyota means you don't have to worry about unexpected service costs. Every Toyota comes with a low, capped price service cost for a set number of years/kilometres. Pay the same low capped price from one eligible logbook service to the next for up to three years or 60,000km, whichever occurs first (including Genuine parts, labour and fluids). For the full benefits consult a Toyota Dealer or visit [toyota.com.au/advantage](http://toyota.com.au/advantage)



## We've got your back.

Every new Toyota is built to exceptional standards, backed by a three year/100,000km<sup>15</sup> warranty, giving you the peace of mind to feel confident for years to come. In the unlikely event that you need them, every Toyota Service Centre is committed to providing any warranty repairs you may need. They have the technology, the tools, and the skilled personnel to keep your Toyota in excellent condition.



## Your battery goes further.<sup>16</sup>

The Hybrid battery used by Toyota, requires no maintenance, charges automatically while you drive and never needs to be plugged into a power supply.

The battery is disposable, recyclable and your Toyota dealership can arrange recycling at no extra cost.



## Finance to get you going.

If you need a little help, Toyota Finance<sup>17</sup> can offer you a wide range of vehicle financing. With Toyota Finance, you'll have the peace of mind of dealing with one of Australia's leading vehicle finance corporations with over 30 years experience. And with a range of flexible products and services to suit almost every need and circumstance, Toyota Finance can help find the right package for you or your business.



## Even more protection.

Our Comprehensive Motor Vehicle insurance policy is packed with great benefits including; choice of agreed value or market value, New vehicle replacement cover for Toyota vehicles damaged beyond repair up to 3 years/100,000km,<sup>18</sup> Genuine Parts Promise and Quality Repair Guarantee. And our Toyota Insurance Factory Approved Extended Warranty Insurance provides protection that continues after your Toyota New Vehicle Warranty ends.



## Extend your peace of mind.

Whether it's a flat tyre, lost keys or a flat battery, Toyota Extra Care Roadside Assist is never more than a phone call away. Available 24 hours a day, seven days a week, every day of the year, you'll have peace of mind, whatever your emergency.<sup>19</sup> With two levels of cover available, Toyota Extra Care Roadside Assist provides one of the most professional, reliable, and technologically advanced assistance networks in Australia.

# Disclaimers and Notice.

- 1 Dynamic Radar Cruise Control is a driver assist technology and should not be used as a substitute for safe driving practices. Driver should continue to monitor the road.
- 2 Reversing Camera is a driver assist device only and should not be used as a substitute for safe driving practices. The area into which the vehicle is driven must be visually monitored by the driver.
- 3 iPod® and iPhone® are trademarks of Apple, Inc. Not all devices will be compatible and functionality will vary depending on the device.
- 4 The Bluetooth® word mark is owned by Bluetooth SIG, Inc. Not all devices will be compatible and functionality varies depending on the device.
- 5 Current navigation mapping database encompasses major capital and primary national road networks and offers some coverage in regional areas.
- 6 Digital radio station coverage dependent on vehicle location.
- 7 Intelligent Park Assist is a driver assist device only and should not be used as a substitute for safe parking practices. The driver should watch the area into which the vehicle is reversed, react appropriately and comply with all road rules. Intelligent Park Assist requires brake control.
- 8 Paint featured is an optional extra at additional cost.
- 9 All Toyota Genuine Accessories purchased and fitted to a Toyota are warranted for the remainder of the New Vehicle Warranty or 12 months, whichever is greater. Toyota Genuine Accessories purchased from an authorised Toyota Dealer over the counter are warranted from the date of purchase for one year. Conditions apply.
- 10 Fuel consumption and emissions will vary depending on driving conditions/style, vehicle conditions and options/accessories. Source of fuel consumption data: ADR81/02 combined cycle.
- 11 Vehicle dimension figures are approximate and vary due to options, accessory fitment and weight carried.
- 12 Kerb, tare and payload weights are nominal and vary depending on options and accessories.
- 13 Guaranteed Future Value (GFV) is the minimum value of your new Toyota at the end of your finance contract, as determined by Toyota Finance. If you decide to return your car to Toyota at the end of your term, Toyota Finance will pay you the agreed GFV amount which will be put against your final payment, subject to fair wear and tear conditions and agreed kilometres being met. The information provided is general in nature. You should seek your own financial

Toyota Genuine Accessories are not applicable to all models/grades. Consider the mass of your load to ensure you will not exceed the maximum allowable individual axle capacity, Gross Vehicle Mass and/or Gross Combined Mass of the vehicle. Refer to the current Accessories brochure or visit [toyota.com.au](http://toyota.com.au) for details on warranty

#### **IMPORTANT NOTICE – PLEASE READ:**

Toyota Australia has used its best endeavours to ensure material is accurate at the time of printing. All information must be confirmed with your Toyota dealer at the time of ordering, as specifications and details will change over time. Colours displayed are a guide only and may vary from actual colours. To the extent permitted by law, Toyota Australia will not be liable for any damage, loss or expense incurred as a result of reliance on the

advice to determine whether Toyota Access is appropriate for your individual circumstances. Terms and conditions, fees and charges apply. Toyota Access Guaranteed Future Value (GFV) products are available to approved customers of Toyota Finance, a division of Toyota Finance Australia Limited ABN 48 002 435 181, Australian Credit Licence 392536.

- 14 Maximum payable for standard scheduled logbook servicing (normal operating conditions) until first of three years or 60,000km (whichever occurs first), up to the first six services. Excludes Government & Rental vehicles. Contact your Toyota Dealer or go to [toyota.com.au/advantage](http://toyota.com.au/advantage) for other exclusions, eligibility and full details.
- 15 New Vehicle Warranty expires three years from date of first delivery or 100,000km, whichever occurs first. Refer to the warranty conditions. The New Vehicle warranty does not limit and may not necessarily exceed your rights under the *Competition and Consumer Act 2010*.
- 16 The HV (Hybrid) Battery Warranty expires 8 years from date of first delivery or 160,000kms, whichever occurs first. This warranty is comprised of the 3 year Toyota New Vehicle Warranty and an additional 5 year Toyota Australia Hybrid (HV) battery warranty. Refer to warranty conditions. This warranty does not limit and may not necessarily exceed your rights under the *Competition and Consumer Act 2010*.
- 17 Toyota Finance is a division of Toyota Finance Australia Limited ABN 48 002 435 181, Australian Credit Licence No 392536.
- 18 Terms and conditions apply. This advice does not take into account any of your particular objectives, financial situation or needs. For this reason, before you act on this advice, you should consider the appropriateness of the advice taking into account your own objectives, financial situation and needs. Before making a decision about any of the insurance products, please refer to the current Product Disclosure Statement (PDS) for the relevant product available from participating Dealers, via the Toyota Insurance website at [toyotainsurance.com.au](http://toyotainsurance.com.au) or by calling 137 200. Toyota Insurance is a division of Aioi Nissay Dowa Insurance Co., Ltd. ABN 39 096 302 466 AFSL Number 254489 (Andia). The Insurer is Andia. Our insurance policies do not change or take away your rights under the Australian Consumer Law. Your right to claim under our policies for the benefits covered is in addition to other rights and remedies you have under the law in relation to your vehicle. However, you can choose to make a claim under any of our policies even if you have rights under the law.
- 19 Toyota Extra Care is administered by Toyota Finance, a division of Toyota Finance Australia Limited ABN 48 002 435 181, Australian Credit Licence 392536.

and [toyota.com.au/vehiclepayload](http://toyota.com.au/vehiclepayload) for details on vehicle payload, to help determine Accessories suitable for your vehicle. Accessory colours shown may vary from actual colour due to the printing process.

information and photos contained in this material. Material distributed in Western Australia by or on behalf Prestige Motors Pty Ltd (for vehicles) and by Eastpoint Pty Ltd (for parts/accessories). Toyota Australia makes no warranties regarding (and will not be liable for) accuracy of materials distributed in Western Australia.  
PART NUMBER: TYPRIUSVBRO1013. VALID: X5085. PRINTED: DECEMBER 2013. TMC0384.