

# The GLE Coupé



Mercedes-Benz





This Brochure is prepared by Daimler AG and it predominantly reflects the capabilities and performance of vehicles sold in Europe.

Some characteristics, capabilities, performance features and optional extras (e.g. towing systems) may not be available or may not apply in Australia under Australian conditions. The information in this Brochure is therefore indicative, illustrative and provided only for guidance and should not be relied on. To obtain current and accurate information on a vehicle and any options applicable to Australia, contact your local authorised Mercedes-Benz dealer.

# In every family there's someone who breaks out.

Experience the best from the world of the car in a new, sensational form: the contemporary luxury of a Mercedes-Benz. The presence of an SUV. The dynamism and agility of a coupé. Characteristically Mercedes, excitingly different. The new GLE Coupé. Make the best of every ground.

## AT HOME ON ANY TERRAIN.



Experience the new GLE Coupé in thrilling HD. With the Mercedes-Benz brochure app for the iPad® and with the Digital Owner's Manual from "Mercedes-Benz Guides" for the iPhone®. Both apps feature a host of films and additional content and are available free of charge from the iTunes Store®.



**Stylishly confident on any terrain.**

**2 | Mercedes-Benz GLE 450 AMG 4MATIC Coupé  
diamond silver metallic**

AMG Sport model, AMG 5-twin-spoke light-alloy wheels, upholstery in nappa leather/leather in black pearl/black with red contrasting topstitching, light longitudinal-grain aluminium trim

**11 | GLE 350 d 4MATIC Coupé  
designo hyacinth red metallic**

5-spoke light-alloy wheels, upholstery in nappa leather/porcelain/black nappa leather, black piano lacquer trim

**20 | Mercedes-AMG GLE 63 S 4MATIC Coupé  
designo diamond white bright**

AMG cross-spoke light-alloy wheels, upholstery in AMG Exclusive nappa leather in black with grey contrasting topstitching, AMG carbon fibre/black piano lacquer trim

**Pioneering on any terrain.**

26 | Mercedes me

32 | Engines

33 | Automatic transmission 9G-TRONIC

34 | DYNAMIC SELECT transmission modes

36 | AIRMATIC air suspension with ADS PLUS

37 | Driving Assistance package Plus

38 | Integral safety concept

39 | Infotainment, networking and multimedia

41 | Panoramic sliding sunroof

42 | AMG Sport model

44 | Mercedes-AMG performance cars

50 | Equipment, packages and accessories

60 | Wheels

62 | Technical data and dimensions

65 | Upholstery and paintwork

The illustrations may include accessories and optional extras which do not form part of the standard specification.



Unadapted.  
And extremely adaptable.



What the design promises is surpassed by the engineering – with a unique symbiosis of sportiness, comfort and individuality. Via the DYNAMIC SELECT Controller you can choose from up to five transmission modes: “Comfort”, “Sport”, “Sport Plus” (model-dependent), “Slippery” and “Individual”. They produce a driving experience totally in accordance with your wishes. Thanks to the AIRMATIC air suspension and Adaptive Damping System ADS PLUS (optional depending on the engine), the damping is automatically adjusted on a permanent basis.







#### THE NEW MERCEDES-BENZ GLE 450 AMG 4MATIC COUPÉ

---

Now there is even more output, even more adrenalin, even more AMG in the Mercedes-Benz portfolio. The AMG Sport models are available with immediate effect. Sharpened drive systems, brake and exhaust systems plus special chassis components that are pure AMG facilitate re-entry to the high-performance class. The "Sport Plus" drive mode is standard: with a higher moving-off engine speed, later shift points, tauter damping and additional lowering of the vehicle. A sports light function with a more dynamic active light function and a faster Highbeam Assist is also active. The Mercedes-Benz GLE 450 AMG 4MATIC Coupé. The beginning of a great passion.



No room  
for modesty.

Revel in more style and modernity. The media display sits enthroned in the cockpit, on request up to 20.3 cm in size, elegantly glazed and with thrilling resolution. The progressive highlight of the GLE Coupé is the comprehensive digital networking of Mercedes connect me. On request you can surf freely on the internet, use ultramodern navigation services or lots of Mercedes-Benz Apps. Mercedes connect me is part of the new Mercedes-Benz service landscape and world of experience Mercedes me. Discover more at [www.mercedes.me](http://www.mercedes.me)

## Understatement is overrated.

In the art of automotive engineering the GLE Coupé stands for a new expressionism. Sensational proportions, broad shoulders and powerfully modelled wheel arches lend the design its sensual purity. The coupé-like silhouette, the wide track and, on request, light-alloy wheels sized up to 55.9 cm (22 inches) embody power and dynamism. For a completely new, confident radiance.





Its design idiom:



The talk of the town.







Inconspicuous. Resting in itself. That, too, is the new GLE Coupé. It is already equipped with the new automatic transmission 9G-TRONIC. An innovation you will barely notice – so smooth are the gear changes, so low the revs. This quiet and serenity: the result of maximum effortless superiority.



## An expression of strength. And splendour.

The vertical three-dimensionally modelled sports grille is the defining characteristic at the front. The bonnet is highly contoured with powerdomes, perfectly framed by delicately styled LED High Performance headlamps with their iconic “eyebrow” and distinctive illumination both during the daytime and at night.







#### LOWER, LONGER, WIDER: FROM THE GLE TO THE GLE COUPÉ

---

The new GLE Coupé is 81 mm longer than the new GLE. A stylistic stimulus which the Mercedes-Benz designers promptly translated into an irresistibly athletic coupé line. The additional width of 68 mm also facilitates a sportier track width. The car stands firm and dominant on the road. The characteristic sports car proportions arise in conjunction with the height reduced by 28 mm and the gently sloping hardtop. The long line when viewed from the side is the finest symbol of this new, unimagined dynamism.

## No get-out clause required.

Climb in, or, better still: up. The high seat position ensures an uplifting feeling when driving, and the horizontal lines in the interior create an especially sporty atmosphere. The eye is immediately caught by the three-dimensionally styled extensive trim, as standard in sportily elegant aluminium, and optionally available in wood or exclusive carbon fibre. On request you can ionise the air or create a very special atmosphere with ambient lighting. Create a space full of luxury and personal style.










A white Mercedes-AMG GLE 63 S 4MATIC Coupé is shown from a front-quarter perspective, driving on a road that curves through a desert landscape. The car's front grille, featuring the Mercedes-Benz logo and the AMG badge, is prominent. The license plate reads 'S UV 2922'. The background consists of rolling, rocky hills under a dramatic, cloudy sky. The overall scene conveys a sense of speed and performance in a rugged environment.

## The Affalterbach Manifesto. Mercedes-AMG GLE 63 S 4MATIC Coupé.

Motorsport technology catapults the new GLE Coupé to the first row on the starting grid. Breathtaking greetings from Affalterbach: the new uncompromisingly sporty Mercedes-AMG GLE 63 4MATIC Coupé with a V8 biturbo engine plus the further-sharpened S-Model (illustrated here) with 430 kW (585 hp) and a maximum torque of 760 Nm. Hungry for curves: the Mercedes-AMG models exclusively boast performance-oriented, rear-biased 40 : 60 power distribution.

A detailed view of the front interior of a Mercedes-AMG vehicle. The image shows the driver's and front passenger's seats, which are upholstered in black nappa leather with grey contrasting topstitching. The center console and door panels also feature this leather upholstery. The dashboard and center console are finished with a black piano lacquer and optional AMG carbon fiber trim. The steering wheel is visible, and the overall interior is dark and sophisticated. The background shows a view through the windshield of a landscape under a dramatic, cloudy sky.

You've never been pressed down into sportier seats. Savour the Mercedes-AMG high-performance driving experience from an exposed position: on AMG sports seats with AMG Exclusive nappa leather upholstery in black with grey contrasting topstitching. The interior is given the ultimate high-end look by the optional trim in AMG carbon fibre/black piano lacquer.



Never did an SUV  
have more S.

## What makes a car a Mercedes?

Deep-rooted traditions: in our case, it is innovative traditions that run deep. We have continually gone down previously uncharted avenues. Milestone by milestone. These ventures spawned the first vehicle with a crumple zone, the first ABS, the first diesel passenger car. The first car. But rather than wallowing in the past, let us look to the future.

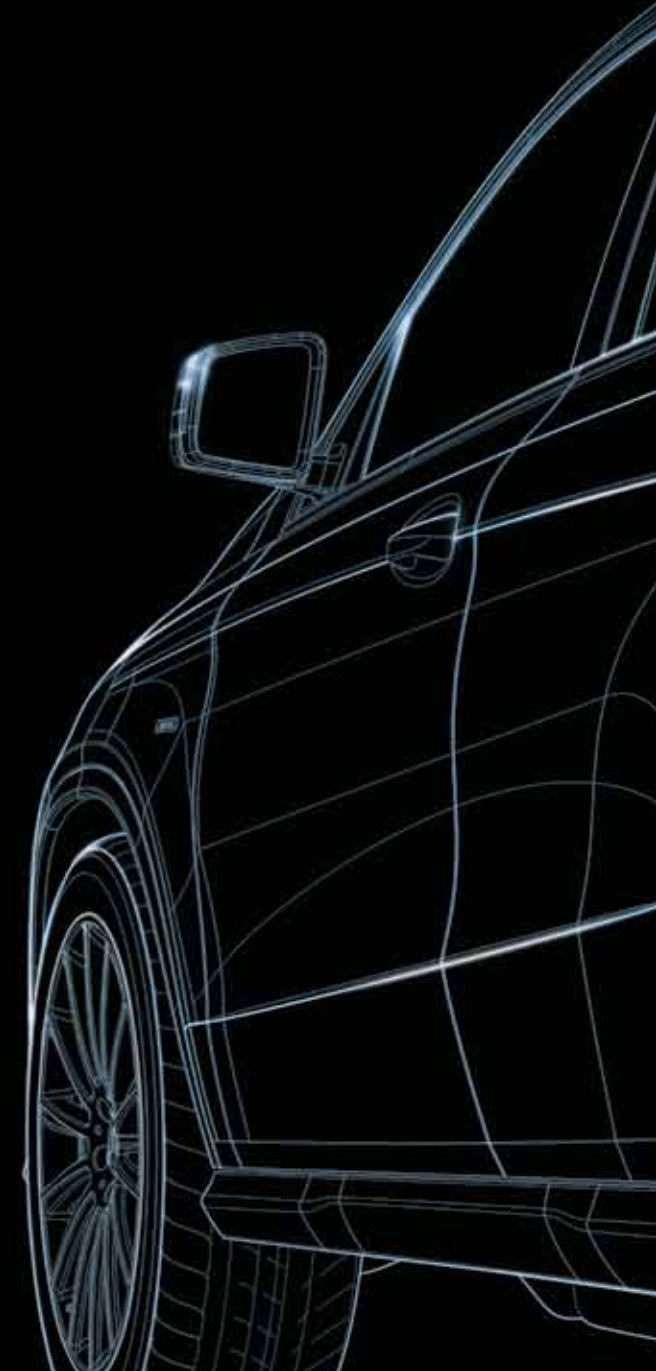
**Mercedes-Benz Intelligent Drive** – on the road to accident-free driving. We develop intelligent assistance systems which actively support the driver and noticeably relieve their workload. They monitor and analyse the vehicle's surroundings and handling characteristics – and warn the driver if they identify any critical situations. When necessary, some of the systems are able to intervene to take corrective action. Potential dangers are identified earlier than ever – and ever more frequently avoided as a result. Discover the fascinating world of Mercedes-Benz Intelligent Drive at [www.mercedes-benz-intelligent-drive.com](http://www.mercedes-benz-intelligent-drive.com)

**BlueEFFICIENCY** – our vision of emission-free driving. Sustainability is a big word to which we lend real meaning in all that we do, down to the smallest details. From minimising the environmental impact of our production operations to alternative drive configurations.

### 30! years 4MATIC

**4MATIC** – driven by new challenges, the vision of optimum traction led the Mercedes-Benz engineers to the International Motor Show in Frankfurt. That is where, in 1985, they unveiled 4MATIC, an innovative traction system working with state-of-the-art microelectronics and hydraulics. Just two years later it entered series production in the E-Class. It has continued its triumphal advance ever since in virtually all model series. And on every terrain. 75 models are now out on the road with 4MATIC and it is tailor-made for each class. Comfortable and efficiently configured for the compact class, right through to extremely sporty for the Mercedes-AMG performance models. For more safety and an intensive driving experience in every single moment.

As you can see, we have major goals in our sights. And what could be better than seeing these aims achieved whilst on a long drive in a Mercedes?







## Our next great innovation revolves around you.

Prepare to be inspired, surprised and thrilled by new services, products and experiences at [www.mercedes.me](http://www.mercedes.me). You are warmly invited to check out our theme stores in major cities such as Berlin, Hamburg, Munich, Paris or Tokyo.

A gem of a Mercedes: the car depicted on this double page is the new C-Class Saloon, combined fuel consumption: 5.9–3.9 [8.4–2.1] l/100 km; combined CO<sub>2</sub> emissions: 136–99 [195–48] g/km.

Figures in square brackets refer to vehicles with automatic transmission.





## Mercedes me. Welcome to your Mercedes-Benz world.

You have new questions, Mercedes-Benz has a new answer for you: Mercedes me. Your point of access to a fascinating world of personalised services from Mercedes-Benz. Offering innovative, individualised mobility, connectivity, finance and other services, as well as special brand experiences. New, simple and cutting-edge: [www.mercedes.me](http://www.mercedes.me)

The new portal is open for you now – on your smartphone, tablet or PC. Climb aboard and let's shape tomorrow's world together.



**Mercedes connect me** is all about networking the vehicle with the driver – and more besides: the car is becoming part of the way we live, providing added comfort as well as the reassurance of being permanently connected, even while on the move. Mercedes connect me includes Standard Services, which are able to provide you with automatic support in the event of a breakdown or an accident, and Remote Online services – the option enabling vehicle settings to be carried out by smartphone.





## Mercedes finance *me*

**Mercedes finance me** offers you various routes to your vehicle of choice – by way of financing or leasing, for example. Daimler Financial Services will help you to identify which solution is best suited to you and what sort of insurance best meets your needs. Our leasing products not only enable you to drive the latest models at all times. You also enjoy maximum flexibility, as you pay not for acquisition of the vehicle, but only for its use. This also results in attractive monthly instalments. Our financing arrange-

ments enable you to pay for your vehicle of choice in a way that suits your personal budget. You can tailor your monthly instalments to your needs by deciding on an appropriate down-payment and term for your contract. Our car insurance solutions offer reliable protection for your budget and your vehicle. Any repair work that may be necessary will always be carried out by qualified specialists in accordance with the manufacturer's specifications.

## Mercedes assist *me*

**Mercedes assist me** makes easy work of organising maintenance for your vehicle, providing a convenient online means of locating a Mercedes-Benz dealer in your neighbourhood and arranging a service appointment. The digital service report keeps you up to date on the current status of service work at all times. Our Service Contracts are the key to motoring without any worries. They offer you a reliable basis for long-term planning and transparency with regard to due items of maintenance work<sup>1</sup>. Your authorised

Mercedes-Benz dealer will be happy to draw up an individual offer for you. Should you nevertheless require on-the-spot assistance due to a breakdown, an accident, a minor mishap or vandalism, you can rely on swift help from Mobilo<sup>2</sup>. You are entitled to on-the-spot services, a replacement vehicle, towing or hotel accommodation for one night – for a period of up to 30 years in over 40 countries throughout Europe. And whenever you need assistance, you can reach us free of charge throughout Europe on 00800 1 777 7777<sup>3</sup>.

## Mercedes move *me*

**Mercedes move me** offers access to the intelligent mobility solution moovel: this mobility app pools the offerings from various mobility providers to find the ideal route from A to B. car2go is the pioneer and market leader worldwide in free-floating car sharing, and car2go black stands for smartphone-based car sharing with comfortable Mercedes-Benz B-Class vehicles. The smartphone app Park2gether makes it easier for you to find a parking space.

## Mercedes inspire *me*

**Mercedes inspire me** offers special brand experiences and an opportunity to engage in an inspiring dialogue. We aim to share our ideas with you and we would like to know your ideas and wishes. So that we can always offer you the best solutions. To this end we are developing a community, for example, and a growing range of offerings and experiences which go beyond the traditional vehicle-related topics – from areas such as events, travel and lifestyle.

<sup>1</sup> Please refer to the General Terms and Conditions for precise details. <sup>2</sup> Upon expiry (two years after initial registration) a service at an authorised Mercedes-Benz service partner is sufficient to renew Mobilo.

<sup>3</sup> Alternatively: +49 69 95 30 72 77 directly via Mercedes-Benz Contact. Calls to the hotline network entail charges.

## What would motorsport be without Mercedes-Benz?

The first vehicle to ever win an automobile race was powered by a Daimler engine. The first Mercedes was a racing car. The Silver Arrows – a true legend. Mercedes-Benz has a long tradition of involvement with the world of sport. Motorsport shapes the brand and every vehicle bearing the Mercedes star to this day. Discover the brand's unique history first-hand: at the Mercedes-Benz Museum in Stuttgart.

### ↘ FIND OUT MORE

Discover just what has been moving the world for more than 125 years and take a journey through time as well as through the history of the automobile at the Mercedes-Benz Museum. More than 1500 exhibits await you on 16,500 sqm of floor-space, including unique gems such as the oldest surviving Mercedes from 1902 or the legendary gull-wing models. Welcome to a place of innovation:

[www.mercedes-benz-classic.com/museum](http://www.mercedes-benz-classic.com/museum)



## What would Mercedes-Benz be without motorsport?

3 June 1934 marked the beginning of the Silver Arrows legend in the International Eifel Race at the Nürburgring. The Silver Arrows works team MERCEDES AMG PETRONAS continued this tradition in the 2014 Formula 1 season. Its successful involvement was crowned by the most impressive double victory of the season, with the team topping both the constructors' and the drivers' rankings. The team's successes are not restricted to the race track, however. Every mile raced also advances the development of hybrid technology for series production.

### FIND OUT MORE

Fascinating Formula 1 goes multimedia:

<http://www.facebook.com/MercedesAMGF1>

<http://twitter.com/MERCEDESAMGF1>

<http://www.youtube.com/user/MERCEDESAMGPETRONAS>

<http://plus.google.com/+Mercedesamgf1/posts>

<http://instagram.com/MercedesAMGF1#>

<http://www.MercedesAMGF1.com>



MERCEDES AMG PETRONAS F1 W06 hybrid, 2015 season.



## Charged with our best ideas: The engines.

Our engineers get much more than just hp from three litres of displacement: the new V6 biturbo engine in the **GLE 400 4MATIC Coupé** achieves an output of 245 kW (333 hp), but impresses above all with its extremely high torque in virtually every driving situation. The maximum possible 480 Nm are available between 1600 and 4000 rpm. This facilitates astonishingly low engine speeds. A technological package, comprising power, refinement and efficiency, which can hardly be overtaken – except by the **Mercedes-Benz GLE 450 AMG 4MATIC Coupé**. Thanks to Mercedes-AMG refinement, the engine achieves another 25 kW and 40 Nm more here.

### THE ENGINE RANGE

---

#### Diesel:

GLE 350 d 4MATIC Coupé with an output of 190 kW (258 hp) and 620 Nm of torque

---

#### Petrol:

GLE 400 4MATIC Coupé with an output of 245 kW (333 hp) and 480 Nm of torque

Mercedes-Benz GLE 450 AMG 4MATIC Coupé with an output of 270 kW (367 hp) and 520 Nm of torque

Mercedes-AMG GLE 63 4MATIC Coupé with an output of 410 kW (557 hp) and 700 Nm of torque

Mercedes-AMG GLE 63 S 4MATIC Coupé with an output of 430 kW (585 hp) and 760 Nm of torque

---

## 9G-TRONIC. The driving force masquerading as a transmission.

With nine forward gears, the **9G-TRONIC** automatic transmission enables efficiency, comfort and dynamism of an entirely new dimension. Its high efficiency helps to reduce fuel consumption. The larger ratio range allows a reduction in engine speed. Performance remains excellent while ride comfort is enhanced and noise levels are cut. The reduced intervals between the gears lead to faster gear changes and enhanced spontaneity and agility. As the 9G-TRONIC is able to skip individual gears, multiple downshifts are possible for fast and powerful sprints.

### POWERTRAIN SYSTEMS

---

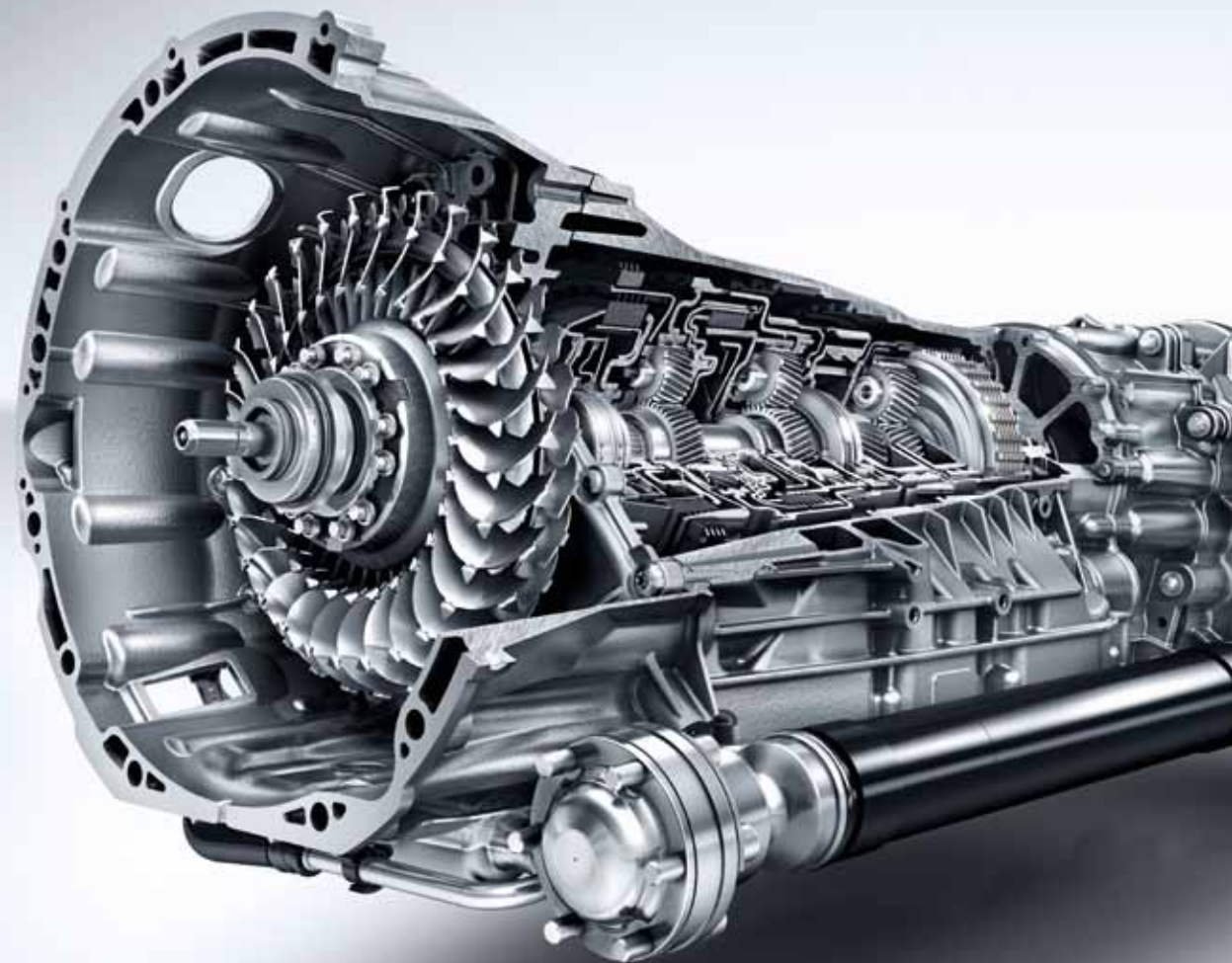
The standard-fit **ECO start/stop function** shuts off the engine temporarily at a red light or in a traffic jam to further lower fuel consumption.

**Cruise control** with **SPEEDTRONIC** variable speed limiter enhances comfort and safety.

---

### ↳ FIND OUT MORE

Please see pages 62/63 for all technical data and availability of the transmission variants.







## Strength of character: the DYNAMIC SELECT transmission modes.

A comfortable, sporty, winter-optimised or completely individual suspension setting of the engine, transmission, suspension and steering can be called up using the Controller of the **DYNAMIC SELECT** in the centre console. The “Comfort” mode facilitates balanced and efficient driving. “Sport” is characterised by sportier tuning for the suspension, which has been lowered by an additional 15 mm, sportily taut damper tuning (in conjunction with AIRMATIC package in each case), a more direct steering feel and modified shift points. The Mercedes-AMG models include the “Sport Plus” mode as standard (optional for GLE 400 4MATIC Coupé) – for extremely sporty shifting and damping characteristics, and also special tuning of the active light function and main beam. The “Slippery” transmission mode provides optimised handling on icy and snow-covered roads. And “Individual” enables you to vary the various parameters completely as you wish.

### DYNAMIC SELECT COMPONENTS

---

For a driving feel as personal as a fingerprint: the **Controller** of the DYNAMIC SELECT is located in the centre console for optimum ergonomic effect.

---

The selected transmission mode is displayed in the instrument cluster and vividly showcased in the **media display**.

---



## Emotional intelligence: the AIRMATIC package.

With the Adaptive Damping System ADS PLUS, the air suspension **AIRMATIC** – available as standard or an option depending on the engine – reduces road roar and tyre vibration characteristics, whilst also ensuring excellent driving dynamics. The damping at each wheel is adapted to the driving situation and road surface condition. Pitching and rolling can be effectively reduced, for example when cornering or braking. The driver can decide on a comfortable or more sporty configuration for the AIRMATIC air suspension. The self-levelling system ensures that the level of the car remains constant, irrespective of the load and driving condition. At high speeds and in the “Sport” transmission mode the car is lowered by up to 15 mm, and by as much as 25 mm in the “Sport Plus” transmission mode (depending on the model), helping to reduce wind resistance and improve handling stability.

---

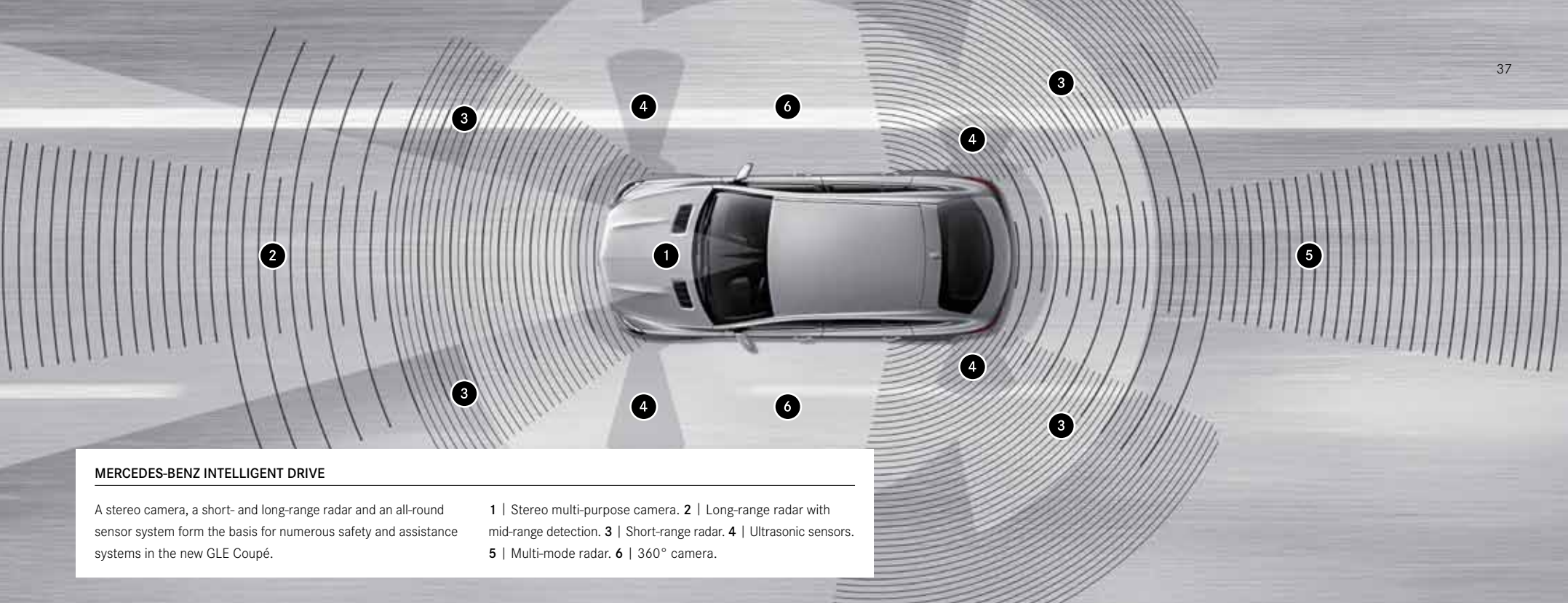
### STEERING AND CHASSIS

The **Sports Direct-Steer system** adds to the comfort of speed-sensitive power steering with a variable ratio dependent on the steering angle. For tangibly more agile vehicle reactions and higher directional stability.

Cornering as if on rails – the **ACTIVE CURVE SYSTEM** (option for AMG Sport model, standard with Mercedes-AMG performance cars) reduces the car’s rolling movements through active chassis stabilisers. When driving off-road, the higher degree of articulation facilitates greater traction.

---





#### MERCEDES-BENZ INTELLIGENT DRIVE

A stereo camera, a short- and long-range radar and an all-round sensor system form the basis for numerous safety and assistance systems in the new GLE Coupé.

1 | Stereo multi-purpose camera. 2 | Long-range radar with mid-range detection. 3 | Short-range radar. 4 | Ultrasonic sensors. 5 | Multi-mode radar. 6 | 360° camera.

## Driving Assistance package Plus. Minus dangers.

On request, a combination of complementary safety and assistance systems helps to relieve driver stress, reduces the risk of accidents and improves protection for both the occupants and other road users. DISTRONIC PLUS with Steering Assist and Stop&Go Pilot helps the driver to maintain a safe distance from the vehicle in front and stay in the centre of the lane. In this way, the system provides a great deal of stress-relieving comfort, especially on long journeys and when following vehicles in a traffic jam. Brake Assist BAS PLUS with Cross-Traffic Assist and PRE-SAFE® Brake can reduce the risk of accidents at

junctions, rear-end collisions and collisions with pedestrians, particularly in urban traffic. Active Lane Keeping Assist and Active Blind Spot Assist provide support when the car unintentionally leaves its lane or if there is a risk of a collision with other vehicles when changing lanes. One-sided braking actuation can help return the car to its lane and prevent an accident. PRE-SAFE® PLUS extends the functions of the preventive PRE-SAFE® occupant protection system with specific protective measures when a rear-end collision threatens.

# The reassuring feeling of driving a Mercedes-Benz.

We are the first automotive manufacturer worldwide to have developed an **integral safety concept**, aimed at avoiding accidents, ensuring ideal responses to dangers and lessening the consequences of accidents. For the occupants of a Mercedes as well as for other road users.

## SAFE DRIVING

---

The **Traffic Sign Assist** can detect speed limits, no-entry and no-overtaking signs and signs indicating the lifting of restrictions, and relieves the strain on the driver by indicating these on the instrument cluster. Part of the optional COMAND Online.

The optional **Adaptive Highbeam Assist Plus** allows the main-beam headlamps to be kept on permanently since oncoming traffic or vehicles in front are masked out in the beams' cone of light.

The **ATTENTION ASSIST** can detect typical signs of drowsiness in the steering behaviour and warn the driver.

The **COLLISION PREVENTION ASSIST PLUS** gives the driver a visual warning if the distance to the vehicle in front is too short. On detecting the danger of a collision there is an acoustic warning, driver braking can be assisted and, if the driver fails to react, the speed can be reduced automatically.

An additional function of the ESP® is the **Crosswind Assist** with automatic lane-correcting brake actuations. A permanent **all-wheel drive, 4MATIC**, ensures stability, dynamism and safety, even in difficult weather or road conditions. Brake force distribution is via a single-stage transfer case.

The **electronic traction system 4ETS** can prevent the driven wheels from spinning on one side when moving off and accelerating by means of brake actuation, as well as preventing both driven wheels from spinning momentarily when cornering within certain speed ranges.

## IN THE EVENT OF DANGER

---

The **occupant protection system PRE-SAFE®** is able to identify critical driving situations in advance and to initiate precautionary measures to protect the car's occupants if an accident appears imminent. Such measures include reversible belt tensioning or automatic closing of open side windows, for example.

## IN AN ACCIDENT

---

Numerous **airbags** protect the occupants in the event of an accident and can reduce the risk of serious injury: adaptive airbags and sidebags for the driver and front passenger, a kneebag for the driver plus side- and windowbags. With the automatic front-passenger airbag shutoff, irrespective of the seat occupancy recognised, unnecessary triggering of the front passenger airbag can be suppressed.

## AFTER AN ACCIDENT

---

Every Mercedes-Benz is fully trained in first aid. If the worst comes to the worst, the engine can be switched off automatically, the hazard warning lamps and emergency interior lighting can be activated, and the central locking can be unlocked. Finally the standard-fit and integral **Mercedes-Benz emergency call system** (country-specific) can send GPS position data and important vehicle information, though it is to be hoped this will never be necessary.



## Infotainment in the new GLE Coupé. Touch and be touched.

Navigation, telephone, audio, video, internet – with the optional **COMAND Online** control and display system the driver is able to keep these and many other functions in view and under control. The data are shown in high resolution on the centrally positioned, particularly fine glass display with a 20.3 cm screen diagonal. The touchpad facilitates intuitive operation using finger gestures, and the user can enter letters, special characters and numbers in their own handwriting.



### MULTIMEDIA AND INFOTAINMENT

The multimedia system **Audio 20 CD** is equipped with internet capability, a radio, twin tuner and CD drive and enables networking with mobile devices via Bluetooth®.

User-friendly navigation, precise map data and excellent route guidance – the optional **Garmin® MAP PILOT** brings all the familiar benefits of a Garmin® navigation system to the Audio 20 CD. It is done quite simply by inserting an SD card with navigation software and map data sets.

An optional high-end surround sound system developed with **Bang & Olufsen®** (see illustration), featuring 14 high-performance loudspeakers and a total output of 1200 watts turns the interior of the car into a concert hall with optimum acoustics.

Carefully matched technical components together with the Logic 7® technology from **Harman Kardon®** provide an unmistakably authentic surround sound. Passengers in all seats enjoy an enthralling 360-degree sound experience for both stereo and 5.1 multi-channel recordings. Also available on request.



## Provides support.

The new GLE Coupé is fitted as standard with electrically adjustable **sports seats** for the driver and front passenger – with perforated seat surfaces and covered with ARTICO man-made leather. They offer an optimum combination of comfort on long journeys and sporty support. Choose from the most diverse of material, colour and function options for the seats. On request the appointments are available in particularly fine nappa leather/leather, for example (see illustration). For seating so comfortable you'd think it was tailor-made.

---

### SEATING COMFORT

The optional **Memory package** is especially convenient if the car is used by more than one person. Up to three different positions for the electrically adjustable front seats, steering column and exterior mirrors can be stored at the touch of a button and retrieved.

The active ventilation function of the **climatised seats** rapidly cools the seat surfaces to a pleasant temperature to ensure well-balanced seating comfort. The on-demand seat heating ensures cosy warmth during the cold season. Available for driver and front passenger on request.

Also available on request are **multicontour seats** for driver and front passenger, including massage function, luxury head restraints and seat cushion depth adjustment.

---

## Grants freedom.

With its large glazed area, the optional **panoramic sliding sunroof** ensures a particularly bright and welcoming ambience in the interior. The outer layer of the full-glass roof with the sliding sunroof on the exterior comprises two separate glazed elements made of safety glass. The movable glass section can be electrically tilted, raised and slid lengthwise towards the rear. The wind deflector is automatically raised when the movable glass cover slides towards the rear. When the car is parked, the panoramic sliding sunroof can also be opened and closed from outside in conjunction with the optional electronic drive authorisation system **KEYLESS-GO**.

### SPACIOUSNESS AND VARIABILITY

Alongside the seat backrests which fold down as standard (see illustration), the transportation of long objects is also made possible by the optional **through-loading feature** above the armrest in the rear. A flap is opened from within the luggage compartment to enable loading. Both outer rear seats can continue to be used at the same time.

Via **ionisation** the air quality in the interior of the car can be considerably improved on request. Ionisation has a refreshing effect and can contribute to an enhanced sense of wellbeing. The filter system, which includes two particulate matter/activated charcoal filters, reduces pollutants and unpleasant odours thoroughly.

The **EASY-PACK tailgate** can be opened and closed at the touch of a button for more convenient loading and unloading of the boot.







## AMG Sport model. Athlete.

The new **Mercedes-Benz GLE 450 AMG 4MATIC Coupé** stands ready, the new gateway to the exciting world of Mercedes-AMG driving performance. The Mercedes-Benz engine boasts a higher output, the all-wheel drive system 4MATIC specific AMG brake force distribution. And it goes without saying that this model has a sportily striking AMG design.

### EXTERIOR HIGHLIGHTS

---

AMG bodystyling with specific AMG Sport model front and rear apron

---

Radiator fin edging in high-gloss black

---

Exterior mirror housings, shoulderline trim strips and window weatherstrips in black

---

AMG spoiler lip, painted in vehicle colour

---

Two chromed AMG tailpipe trims with a centrepiece

---

AMG 7-twin-spoke light-alloy wheels, painted black with a high-sheen finish, with 275/45 R 21 front and 315/40 R 21 rear tyres

---

### INTERIOR HIGHLIGHTS

---

3-spoke multifunction sports steering wheel in black nappa leather, with flattened bottom section

---

Upholstery in ARTICO man-made leather with AMG Line seat upholstery layout

---

Brushed stainless steel sports pedals with rubber studs

---

AMG floor mats with "AMG" lettering

---





## Mercedes-AMG GLE 63 4MATIC Coupé exterior.

The thrill of pure Mercedes-AMG. Breathtaking design, racing-derived technologies – perfectly tuned with one another. This is the new Mercedes-AMG GLE 63 4MATIC Coupé.

Mercedes-AMG driving performance – only genuine with these components: AMG 5.5-litre V8 biturbo engine, AMG sports suspension on the basis of AIRMATIC, specific AMG brake force distribution of 40 : 60 in the all-wheel drive for superb traction, AMG design, AMG light-alloy wheels plus sportily exclusive interior.



### EXTERIOR HIGHLIGHTS

---

Specific AMG front apron (A-wing painted in vehicle colour)

---

Specific AMG rear apron with diffuser fins

---

AMG spoiler lip in vehicle colour

---

AMG 10-spoke light-alloy wheels painted titanium grey with a high-sheen finish, with 285/45 R 21 front and 325/40 R 21 rear tyres

---

Brake callipers, painted silver, with "AMG" lettering

---

"V8 BITURBO" lettering on front wings

---

AMG sports exhaust system with two chrome-plated twin tailpipe trim elements

---



## Mercedes-AMG GLE 63 4MATIC Coupé interior.

Inner strength: all design elements as well as AMG control and display instruments functionally and visually support the performance of the Mercedes-AMG GLE 63 4MATIC Coupé. Nothing should distract you, everything will blow you away.



### INTERIOR HIGHLIGHTS

---

AMG performance 3-spoke steering wheel in black nappa leather, with flattened bottom section and silver-coloured aluminium shift paddles

---

AMG instrument cluster with 11.4 cm multifunction display and AMG main menu

---

AMG sports seats with specific AMG seat upholstery layout in nappa leather upholstery, optimised lateral support and "AMG" badge in the backrests

---

AMG nappa leather upholstery in the appointments colours black (see illustrations), espresso brown/black and porcelain/black

---

AMG door sill panels in brushed stainless steel with "AMG" lettering

---

AMG floor mats with embroidered "AMG" lettering

---



# Mercedes-AMG GLE 63 S 4MATIC Coupé.

A superlative cast in top form: the top model of the GLE Coupé, the new Mercedes-AMG GLE 63 S 4MATIC Coupé (illustration including optional running boards). A highly emotive driving machine with exclusive high-end specifications.

## EXTERIOR HIGHLIGHTS

---

Specific AMG front apron (A-wing in high-gloss black)

---

Specific AMG rear apron with diffuser fins plus trim strip in silver chrome

---

AMG spoiler lip in vehicle colour

---

AMG cross-spoke light-alloy wheels, painted titanium grey with a high-sheen finish, with 285/40 R 22 front and 325/35 R 22 rear tyres

---

Brake callipers, painted red, with "AMG" lettering

---

"V8 BITURBO" lettering on front wings

---

AMG sports exhaust system with two chrome-plated twin tailpipe trim elements

## INTERIOR HIGHLIGHTS

---

AMG performance steering wheel in black nappa leather/DINAMICA microfibre

---

AMG instrument cluster with 11.4 cm multifunction display and AMG main menu with red highlights

---

AMG sports seats with specific AMG seat upholstery layout in AMG Exclusive nappa leather upholstery, optimised lateral support and "AMG" badge in the backrests

---

AMG door sill panels in brushed stainless steel with "AMG" lettering

---

AMG crest embossed (on head restraints, front seats)





## Mercedes-AMG technical details.

Characteristically for AMG, the heart of the Mercedes-AMG GLE 63 4MATIC Coupé is the engine, a **5.5-litre V8 biturbo engine** with an output of 410 kW (557 hp), 700 Nm of torque (Mercedes-AMG GLE 63 S 4MATIC Coupé: 430 kW (585 hp) and 760 Nm) plus a turbocharger providing an immediate response. An optimum conversion of output into tractive power is facilitated by the automatic transmission **AMG SPEEDSHIFT PLUS 7G-TRONIC** with barely perceptible shift times for extremely sporty power transmission. This much power has to be tamed: the features taking care of this include the **ACTIVE CURVE SYSTEM** with active roll stabilisation, standard in the Mercedes-AMG performance cars. Through its active chassis stabilisers it reduces the car's rolling movements. For enhanced driving stability, for example at high speeds on the motorway.

### HIGHLIGHTS AT A GLANCE

---

DYNAMIC SELECT with five transmission modes, including "Sport Plus"  
(more on pages 34/35)

---

AMG performance 4MATIC all-wheel drive with specific AMG 40 : 60 brake force distribution (front : rear)

---

AMG Sport speed-sensitive steering with specific AMG parameterisation and multi-adjustable steering characteristics

---

AMG high-performance braking system with large-dimensioned, internally ventilated and perforated brake discs, 390 x 36 mm at the front and 345 x 26 mm at the rear

---



## AMG Performance Studio.

For all those who can't get enough AMG thrills: the AMG Performance Studio, a training camp in which the Mercedes-AMG performance cars can be driven to new heights of achievement on request.

Ready for more? The AMG Driver's package includes an increase in the top speed to 280 km/h. A voucher for participation in driver training at the AMG Driving Academy is included in the package.



### HIGHLIGHTS AT A GLANCE

---

AMG Driver's package

---

AMG performance steering wheel in black nappa leather/DINAMICA microfibre

---

AMG carbon-fibre engine cover

---

AMG performance exhaust system

---

AMG 10-spoke light-alloy wheels, painted titanium grey with a high-sheen finish, with 285/45 R 21 front and 325/40 R 21 rear tyres

---

AMG cross-spoke light-alloy wheels, painted titanium grey with a high-sheen finish, with 285/40 R 22 front and 325/35 R 22 rear tyres

---

AMG cross-spoke light-alloy wheels, painted matt black with a high-sheen finish, with 285/40 R 22 front and 325/35 R 22 rear tyres

---





## The standard equipment.

An extraordinary driving experience – standard in the new GLE Coupé. Highlights of the standard equipment include the LED Intelligent Light System and the sports seats. Intelligent technology, intelligently integrated: the reversing camera with a wide-angle lens is installed in the tailgate – beneath the Mercedes star.

### EXTERIOR HIGHLIGHTS

---

LED Intelligent Light System/LED daytime running lamps

---

Tail lights with LED technology

---

Chrome-look underride guard at front and rear

---

EASY-PACK tailgate with automatic opening/closing

---

10-spoke light-alloy wheels with 275/50 R 20 tyres

---

Exhaust system two-pipe with two integral chromed tailpipe trims (in the case of the GLE 350 d 4MATIC Coupé not functional)

---

### INTERIOR HIGHLIGHTS

---

Upper section of dashboard in ARTICO man-made leather

---

Multifunction sports steering wheel in leather with twelve multifunction buttons

---

DYNAMIC SELECT with four transmission modes

---

THERMATIC automatic climate control with two climate zones

---

Sports seat for driver and front passenger with upholstery in ARTICO man-made leather

---

Reversing camera with dynamic guide lines in display

---

Multimedia system Audio 20 CD

---



## EXCLUSIVE Interior. Excitingly luxurious.

The select appointments of this optional line create a trendsetting interior which reinterprets the meaning of luxury to exciting effect. The interior concept features tasteful colour combinations, whilst large areas of trim, for which a variety of wood can be selected, create further visual highlights.



### HIGHLIGHTS AT A GLANCE

---

Four attractive colour concepts: black, ginger beige/black, saddle brown/black (see illustrations), crystal grey/black

---

Luxury seats with exclusive seat upholstery layout, finished in leather

---

Roof liner crystal grey or porcelain fabric

---

Trim in ARTICO man-made leather with topstitching for dashboard (top and bottom) and beltline

---

Trim in high-gloss black poplar (see illustrations) or in black piano lacquer, high-gloss brown eucalyptus wood or brown open-pore ash wood – in each case including a wood cover above the cup holder

---

Velour floor mats

---

Ambient lighting and Interior Light package, with features including multi-coloured fibre-optic cables beneath the trim, illuminated door sills at the front and footwell lamps in the rear

---



## designo Exclusive package. Uniquely personal.

Exclusivity and individuality carried to extremes: designo is the name of our world for all things special. On request the new GLE Coupé will arrive with an individually compiled exquisite interior package. Make yourself at home on seats with exclusive diamond-design quilting and the seat upholstery in finest designo nappa leather. Handcrafted character, awarded the “designo” badge.

Be enchanted! Your authorised Mercedes-Benz dealer will be happy to advise you and show you original samples.

### HIGHLIGHTS AT A GLANCE

---

Seats (luxury seats at the front) with special diamond-look design and “designo” badges in the backrests

---

Seat upholstery in porcelain/black designo nappa leather

---

Fully power-adjustable front seats with seat heating and driver's seat with 4-way lumbar support

---

Dashboard with cover in designo nappa leather

---

Door linings in designo nappa leather (beltlines, door centre panels and armrests)

---

Roof liner and pillar trim in black DINAMICA microfibre

---

designo floor mats black with edging in designo leather and with “designo” badges

---

Automatic front passenger airbag deactivation

---







## Design performance: the AMG Lines.

The optional AMG Exterior Line accelerates glances thanks to features such as the AMG Line front and rear apron plus large-dimensioned AMG light-alloy wheels. Sports seats in nappa leather, with the choice of red contrasting topstitching, a sports steering wheel, a specific instrument cluster plus sports pedals form the optional sportily exclusive AMG Interior Line.

### AMG EXTERIOR LINE HIGHLIGHTS

---

AMG bodystyling, comprising specific AMG Line front and rear apron

---

AMG 5-twin-spoke light-alloy wheels, painted titanium grey with a high-sheen finish, with 275/45 R 21 front and 315/40 R 21 rear tyres

---

### AMG INTERIOR LINE HIGHLIGHTS

---

Sports seats finished in nappa leather

---

Fully power-adjustable front seats for individual adjustment of the seat position

---

3-spoke multifunction sports steering wheel in black nappa leather, with flattened bottom section

---

Instrument cluster with differentiated dials in chequered flag look

---

Brushed stainless steel sports pedals with rubber studs

---

AMG floor mats with "AMG" lettering

---



# Goodnight, monotony. The Night package.

With striking design elements in black, the optional Night package underscores the sporty, expressive character of the car. It builds on the AMG Exterior Line.

## HIGHLIGHTS AT A GLANCE

- Louvre in the radiator grille in high-gloss black

---
- A-wing insert in front and rear apron in black (for Mercedes-AMG performance cars)

---
- AMG 5-twin-spoke light-alloy wheels, painted black with a high-sheen finish, with 275/45 R 21 front and 315/40 R 21 rear tyres (for GLE 350 d 4MATIC Coupé and GLE 400 4MATIC Coupé)

---
- Further AMG light-alloy wheels in titanium grey or black as an option

---
- Simulated underguard at the front and rear in high-gloss black (not for Mercedes-AMG performance cars)

---
- Exterior mirror housings in high-gloss black

---
- Waistline trim strips and window weatherstrips in black

---
- Dark tinted glass from the rear doors onwards

---
- Tailpipe trims in chrome (tailpipe trims on the Mercedes-Benz GLE 450 AMG 4MATIC Coupé in chromed black with centrepiece)

---
- Twin tailpipe trims in black (for Mercedes-AMG performance cars)

---





## Tailor-made benchmark. The optional extras.

There is a rich selection of appointments options for making the new GLE Coupé all your own. From small details for that certain something through to luxury appointments for the height of comfort. Take your time to browse around – in this brochure, by reference to the price list or online. At [www.mercedes-benz.com](http://www.mercedes-benz.com) you can configure the new GLE Coupé yourself.

### HIGHLIGHTS AT A GLANCE

- 1 With the **360° camera** (part of the optional Parking package with 360° camera) the car and its surroundings can be shown in the COMAND Online display from a bird's-eye view. This means that obstacles below the window line are also visible to the driver.
- 2 The **ambient lighting with projection of the brand logo** beneath the side mirrors ensures safer entry and exit in darkness.
- 3 The adaptive windscreen wiper system **MAGIC VISION CONTROL** offers the driver optimum vision. The washer fluid is sprayed directly in front of the wiper blades and wiped away without delay. The heating system effectively lowers the risk of icing-up.
- 4 The **illuminated aluminium-look running boards** are mounted at the height of the side skirts and make it easier to get into the car, front and rear. Slip-resistant rubber studs ensure a firm foothold.

# That certain something extra. The genuine accessories.

Individualise the new GLE Coupé with the range of genuine accessories. These cover every conceivable need for more enjoyable, more pleasant and more practical motoring.

## ACCESSORIES HIGHLIGHTS

- 1 The **lockable rear-mounted bicycle rack** enables two or three bicycles to be transported safely, mountable on the trailer coupling. Maximum load of up to 30 kg per bicycle rail, therefore suitable for most e-bikes. Thanks to a roller mechanism the boot can still be opened. The carrier can be easily folded up for space-saving storage.

---

- 2 Aerodynamic **roof box** designed to fit the GLE Coupé, made of extremely durable material. Fast, optimised mounting on the separately available basic carrier bars. Convenient loading and unloading, as it can be opened and closed on both sides.

---

- 3 The elegantly exclusive look is underlined by the **5-twin-spoke light-alloy wheels**, painted himalayas grey with a high-sheen finish, with 275/45 R 21 front and 315/40 R 21 rear tyres (accessory wheel ex factory for GLE 350 d 4MATIC Coupé and GLE 400 4MATIC Coupé).

---

- 4 The **illuminated Mercedes star** for the radiator grille is a particularly eye-catching feature. Thanks to fibre-optic cable and LED technology the central star is illuminated when unlocking the car via remote control and when opening doors or the tailgate (functionality only when the engine is switched off). In all likelihood available from 4<sup>th</sup> quarter of 2015.

↳ DISCOVER THE ENTIRE RANGE  
Now online at [www.mercedes-benz-accessories.com](http://www.mercedes-benz-accessories.com)





60

50R



R77 650



R33



R76 684



## Wheels.

Wheels are indispensable on technical grounds, of course. But on an emotional level, too, perfect wheels are an absolutely crucial ingredient of many people's dream car. With this in mind, we have put together a particularly large and diverse selection for you.

### STANDARD EQUIPMENT AND OPTIONAL EXTRAS

50R 10-spoke light-alloy wheels, painted vanadium silver, with 275/50 R 20 tyres (standard for GLE 350 d 4MATIC Coupé and GLE 400 4MATIC Coupé)

R33 5-twin-spoke light-alloy wheels, painted himalayas grey with a high-shine finish, with 275/50 R 20 tyres (option for GLE 350 d 4MATIC Coupé and GLE 400 4MATIC Coupé)

R77 5-twin-spoke light-alloy wheels, painted vanadium silver with a high-shine finish, with 275/45 R 21 front and 315/40 R 21 rear tyres (option for GLE 350 d 4MATIC Coupé and GLE 400 4MATIC Coupé)

R76 5-spoke light-alloy wheels, painted himalayas grey with a high-shine finish, with 275/45 R 21 front and 315/40 R 21 rear tyres (option for GLE 350 d 4MATIC Coupé and GLE 400 4MATIC Coupé)

### AMG

650 AMG 5-twin-spoke light-alloy wheels, painted titanium grey with a high-shine finish, with 275/45 R 21 front and 315/40 R 21 rear tyres (part of the optional AMG Exterior Line for GLE 350 d 4MATIC Coupé and GLE 400 4MATIC Coupé)

684 AMG 5-twin-spoke light-alloy wheels, painted black with a high-shine finish, with 275/45 R 21 front and 315/40 R 21 rear tyres (part of the optional Night package for GLE 350 d 4MATIC Coupé and GLE 400 4MATIC Coupé and standard for Mercedes-Benz GLE 450 AMG 4MATIC Coupé)





674



667 671



61



676



759 680



674 AMG 10-spoke light-alloy wheels, painted titanium grey with a high-sheen finish, with 285/45 R 21 front and 325/40 R 21 rear tyres (standard for Mercedes-AMG GLE 63 4MATIC Coupé, option for Mercedes-AMG GLE 63 S 4MATIC Coupé)

676 AMG cross-spoke light-alloy wheels, painted titanium grey with a high-sheen finish, with 285/40 R 22 front and 325/35 R 22 rear tyres (option for Mercedes-AMG GLE 63 4MATIC Coupé, standard for Mercedes-AMG GLE 63 S 4MATIC Coupé)

667 AMG multi-spoke light-alloy wheels, painted titanium grey with a high-sheen finish, with 285/40 R 22 front and 325/35 R 22 rear tyres (option for Mercedes-Benz GLE 450 AMG 4MATIC Coupé)

759 AMG multi-spoke light-alloy wheels, painted black with a high-sheen finish, with 285/40 R 22 front and 325/35 R 22 rear tyres (option for Mercedes-Benz GLE 450 AMG 4MATIC Coupé)

671 AMG 5-twin-spoke light-alloy wheels, painted black with a high-sheen finish, with 285/40 R 22 front and 325/35 R 22 rear tyres (option for Mercedes-Benz GLE 450 AMG 4MATIC Coupé)

680 AMG cross-spoke light-alloy wheels, painted matt black with a high-sheen finish, with 285/40 R 22 front and 325/35 R 22 rear tyres (option for Mercedes-AMG GLE 63 4MATIC Coupé and Mercedes-AMG GLE 63 S 4MATIC Coupé)

↘ **FURTHER WHEELS**

can be found in our accessories range at [www.mercedes-benz-accessories.com](http://www.mercedes-benz-accessories.com)

# Technical data.

No. of cylinders/arrangement
Total displacement in cc
Rated output <sup>1</sup> in kW (hp) at rpm
Rated torque <sup>1</sup> in Nm at rpm
Transmission
Acceleration from 0 to 100 km/h in s
Top speed, approx. in km/h
Tyre size – front axle, rear axle
Fuel
Fuel consumption <sup>3</sup> in l/100 km
Urban
Extra-urban
Combined
CO <sub>2</sub> emissions <sup>3</sup> in g/km combined
Emission class <sup>4</sup> /efficiency class <sup>5</sup>
Tank capacity, of which reserve, approx. in l
Boot capacity <sup>6</sup> in l
Turning circle diameter in m
Kerb weight <sup>7</sup> in kg
Perm. GVW in kg

## DIESEL ENGINE

### GLE 350 d 4MATIC Coupé

6/V
2987
190 (258)/3400
620/1600
9G-TRONIC
7.0
226
275/50 R 20
Diesel
7.9–7.5
6.6–6.4
7.2–6.9
187–180
Euro 6/B
93/12.0
650–1720
11.80
2250
2900

## PETROL ENGINES

### GLE 400 4MATIC Coupé

### Mercedes-Benz GLE 450 AMG 4MATIC Coupé

6/V	6/V
2996	2996
245 (333)/5250–6000	270 (367)/5500–6000
480/1600–4000	520/1800–4000
9G-TRONIC	9G-TRONIC
6.0	5.7
247	250 <sup>2</sup>
275/50 R 20	275/45 R 21, 315/40 R 21
Premium petrol	Super Plus petrol
11.2–10.7	11.7–11.3
7.6–7.4	8.1–7.7
8.9–8.7	9.4–8.9
207–199	219–209
Euro 6/C	Euro 6/C
93/12.0	93/12.0
650–1720	650–1720
11.80	11.80
2180	2220
2850	2880

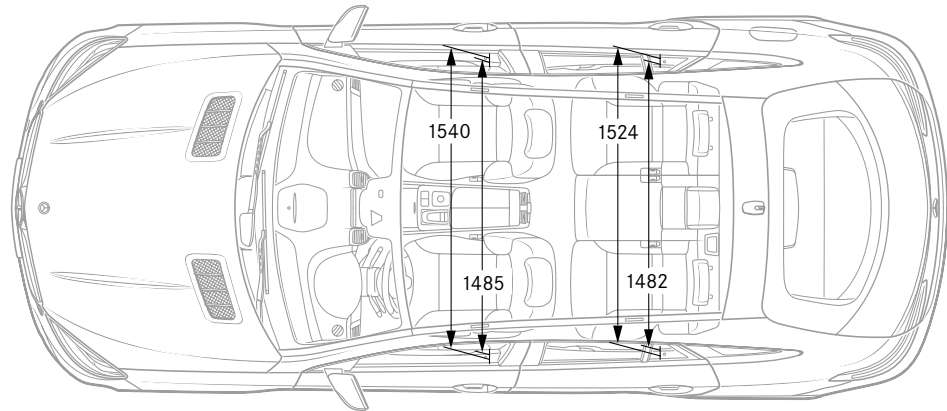
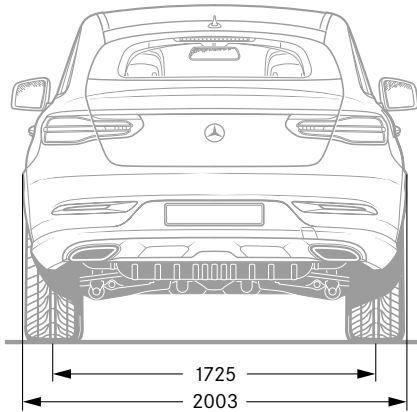
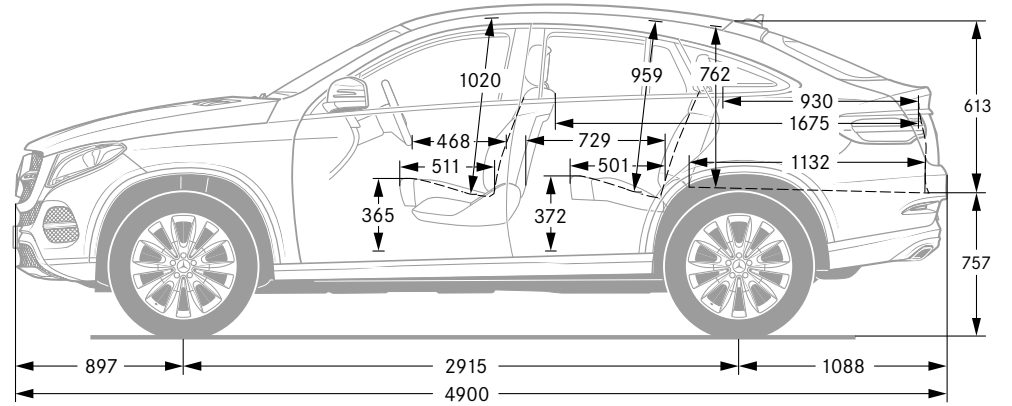
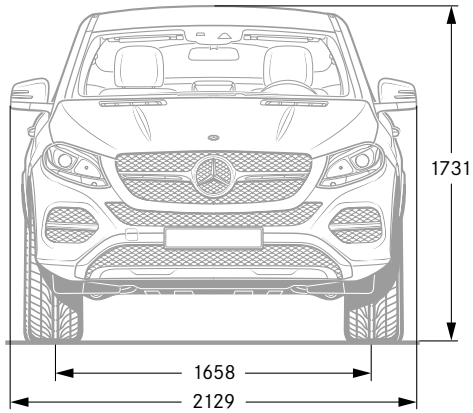
**The best for the engine:**  
Mercedes-Benz genuine engine oils.

<sup>1</sup> Figures for rated output and torque in accordance with Directive 80/1269/EEC in the currently applicable version. <sup>2</sup> Electronically governed. <sup>3</sup> The figures shown were obtained in accordance with the prescribed measuring processes (Directive [EC] 715/2007 in the currently applicable version in each case). Note according to Directive 1999/94/EC in the currently applicable version: the figures are not based on an individual vehicle and do not constitute part of the product offer; they are provided solely for purposes of comparison between different vehicle models. <sup>4</sup> Data applicable within the

	<b>PETROL ENGINES</b>	
	<b>Mercedes-AMG GLE 63 4MATIC Coupé</b>	<b>Mercedes-AMG GLE 63 S 4MATIC Coupé</b>
No. of cylinders/arrangement	8/V	8/V
Total displacement in cc	5461	5461
Rated output <sup>1</sup> in kW (hp) at rpm	410 (557)/5750	430 (585)/5500
Rated torque <sup>1</sup> in Nm at rpm	700/1750-5500	760/1750-5250
Transmission	AMG SPEEDSHIFT PLUS 7G-TRONIC	AMG SPEEDSHIFT PLUS 7G-TRONIC
Acceleration from 0 to 100 km/h in s	4.3	4.2
Top speed, approx. in km/h	250 <sup>2</sup>	250 <sup>2</sup>
Tyre size - front axle, rear axle	285/45 ZR 21, 325/40 ZR 21	285/40 ZR 22, 325/35 ZR 22
Fuel	Premium petrol	Premium petrol
Fuel consumption <sup>3</sup> in l/100 km		
Urban	15.8	15.8
Extra-urban	9.7	9.7
Combined	11.9	11.9
CO <sub>2</sub> emissions <sup>3</sup> in g/km combined	278	278
Emission class <sup>4</sup> /efficiency class <sup>5</sup>	Euro 6/F	Euro 6/F
Tank capacity, of which reserve, approx. in l	93/14.0	93/14.0
Boot capacity <sup>6</sup> in l	650-1720	650-1720
Turning circle diameter in m	11.80	11.80
Kerb weight <sup>7</sup> in kg	2350	2350
Perm. GVW in kg	3050	3050

European Union only. Country-specific variations possible. <sup>5</sup> Determined on the basis of the CO<sub>2</sub> emissions, taking into account the mass of the vehicle. <sup>6</sup> Figures in accordance with Directive 70/156/EEC, version 2000/40/EC. <sup>7</sup> The figures shown were obtained in accordance with Directive 92/21/EC, version 95/48/EC (kerb weight with fuel tank 90% full, driver, 68 kg, and luggage, 7 kg) for standard-specification vehicles. Optional extras and accessories will generally increase this figure and reduce the payload capacity accordingly. You can find further technical data at [www.mercedes-benz.com](http://www.mercedes-benz.com)

## Dimensions.



All dimensions in millimetres. The dimensions shown are mean values and apply to standard-specification, unladen vehicles.

# Upholstery and trim.

---

## Upholstery

---

- 121 black
- 135 ginger beige/black
- 138 crystal grey/black
- 211 black<sup>1,2</sup>
- 224 saddle brown/black<sup>1,2</sup>
- 225 ginger beige/black<sup>1,2</sup>
- 228 crystal grey/black<sup>1,2</sup>
- 531 black<sup>3</sup>
- 534 espresso brown/black<sup>3,4</sup>
- 535 porcelain/black<sup>3,4</sup>
- 541 black with grey contrasting topstitching<sup>4</sup>
- 811 black pearl/black<sup>1,5</sup>
- 821 black pearl/black with red contrasting topstitching<sup>1,5</sup>
- 831 black<sup>6</sup>
- 834 espresso brown/black<sup>6</sup>
- 835 porcelain/black<sup>6</sup>
- 855 porcelain/black<sup>1,5</sup>
- 955 porcelain/black<sup>1</sup>

---

## Trim

---

- 739 light longitudinal-grain aluminium
  - 734 high-gloss brown eucalyptus wood<sup>1</sup>
  - H09 brown open-pore ash wood<sup>1</sup>
  - 729 high-gloss black poplar wood<sup>1</sup>
  - H21 black piano lacquer<sup>1</sup>
  - H10 AMG carbon fibre/black piano lacquer<sup>1</sup>
- 

<sup>1</sup> Optional extra. <sup>2</sup> Standard in conjunction with EXCLUSIVE Interior. <sup>3</sup> Optional extra for Mercedes-AMG GLE 63 4MATIC Coupé. <sup>4</sup> Standard for Mercedes-AMG GLE 63 S 4MATIC Coupé. <sup>5</sup> Standard in conjunction with AMG Interior Line. <sup>6</sup> Standard for Mercedes-AMG GLE 63 4MATIC Coupé.

Sports seat  
ARTICO man-made leather



121

Luxury seat  
Leather



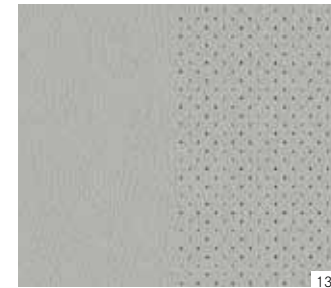
211



135



224



138



225

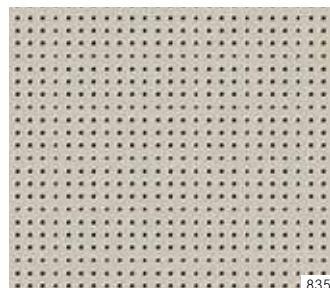
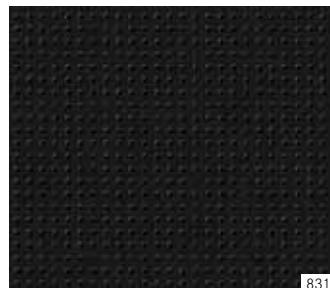


228

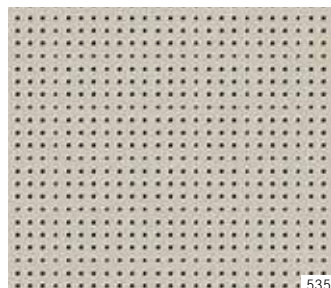
Sports seat  
Nappa leather/leather



AMG sports seat  
AMG nappa leather



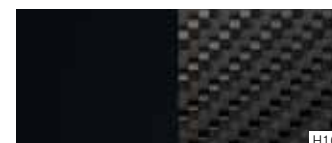
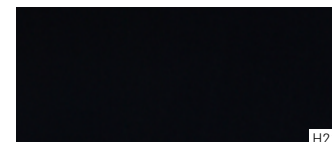
AMG sports seat  
AMG Exclusive nappa leather



Luxury seat  
designo Exclusive nappa leather

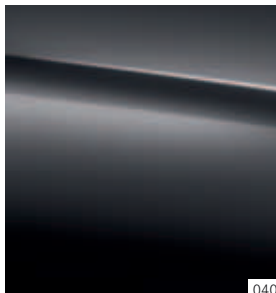


Trim



# Paintwork.

## Non-metallic paints



040



149

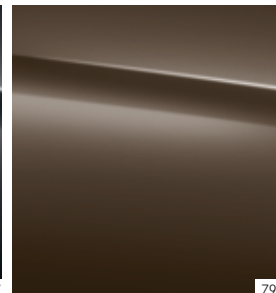
## Metallic paints<sup>1</sup>



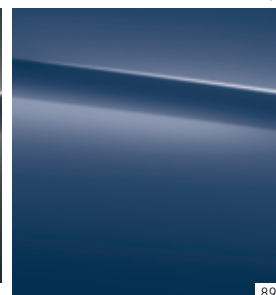
197



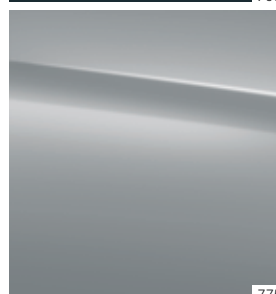
755



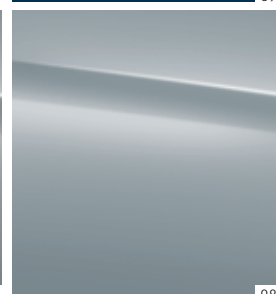
796



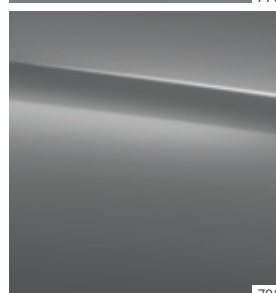
890



775



988



792

## designo paints<sup>1</sup>



799



996

---

### Non-metallic paints

---

- 040 black  
149 polar white
- 

### Metallic paints<sup>1</sup>

---

- 197 obsidian black  
755 tenorite grey  
775 iridium silver  
792 palladium silver  
796 citrine brown  
890 cavansite blue  
988 diamond silver
- 

### designo paints<sup>1</sup>

---

- 799 designo diamond white bright  
996 designo hyacinth red metallic
- 

<sup>1</sup> Optional extra.



**Mercedes-Benz is one of the founding partners of the “Laureus Sport for Good Foundation”.**

Since the foundation was established in 2000, Mercedes-Benz has been supporting and promoting the aims and values of this worldwide non-profit-making programme: to improve the lives of children and young people who are disadvantaged or suffering from illnesses through social sports projects. Laureus has become a fundamental element of Mercedes-Benz’s social responsibility. Every new Mercedes is an ambassador embodying these values. In buying a Mercedes you are supporting the “Laureus Sport for Good Foundation”.

**Please note:** changes may have been made to the product since going to print (16.03.2015). The manufacturer reserves the right during the delivery period to make changes to the design, form, colour or specification, provided these changes, while taking into account the interests of the vendor, can be deemed reasonable with respect to the purchaser. Where the vendor or the manufacturer uses symbols or numbers to describe an order or the subject of an order, no rights may be derived solely from these. The illustrations may include accessories and optional extras which do not form part of the standard specification. Actual colours may differ slightly from those shown owing to the limitations of the printing process. This brochure is distributed internationally. Information given regarding statutory regulations, legal requirements and taxation and the consequences thereof applies to the Federal Republic of Germany only and is correct at the time of going to press. For current and more specific information in relation to the range of models, features, optional extras, colours and/or services available in your country, and their pricing, you should contact your nearest authorised Mercedes-Benz Passenger Car Dealer.

[www.mercedes-benz.com](http://www.mercedes-benz.com)

**Take-back of end-of-life vehicles.** We will be pleased to take back your GLE Coupé for environment-friendly disposal in accordance with the European Union (EU) End-Of-Life Vehicle Directive – but that day lies a long way off.

A network of vehicle take-back depots and dismantlers is available to make returning your vehicle as easy as possible for you. You are welcome to return your vehicle to one of these establishments free of charge. In so doing, you will be making a valuable contribution towards closing the recycling cycle and preserving resources.

For further information about the recycling and disposal of end-of-life vehicles and take-back conditions, please visit your national Mercedes-Benz website.